

MINERAL DEVELOPMENT DIVISION
DEPARTMENT OF MINES AND ENERGY
GOVERNMENT OF NEWFOUNDLAND AND LABRADOR

GEOLOGICAL MAP OF THE ACKLEY GRANITE, EASTERN NEWFOUNDLAND

MAP 81-05
Published 1983

SCALE 1:100,000 ÉCHELLE
Miles 0 1 2 3 4 5
Kilometres 0 1 2 3 4 5

SYMBOLS

Geological boundary (defined, approximate, assumed, gradational)
Fault (defined, approximate)
Bedding, tops known (inclined, vertical)
Bedding, tops unknown (inclined, vertical)
Schistosity, first generation (inclined, vertical)
Schistosity, second generation (inclined, vertical)
Axis of minor folds
Diabase dike (vertical, inclined)
Mineral occurrence (molybdenite, pyrite, pyrrhotite, chalcopyrite, galena, sphalerite, barite, hematite, beryl)
Power line

Geology by W.L. Dickson (1979, 1981).

This is a preliminary map and may be subject to revision and correction.

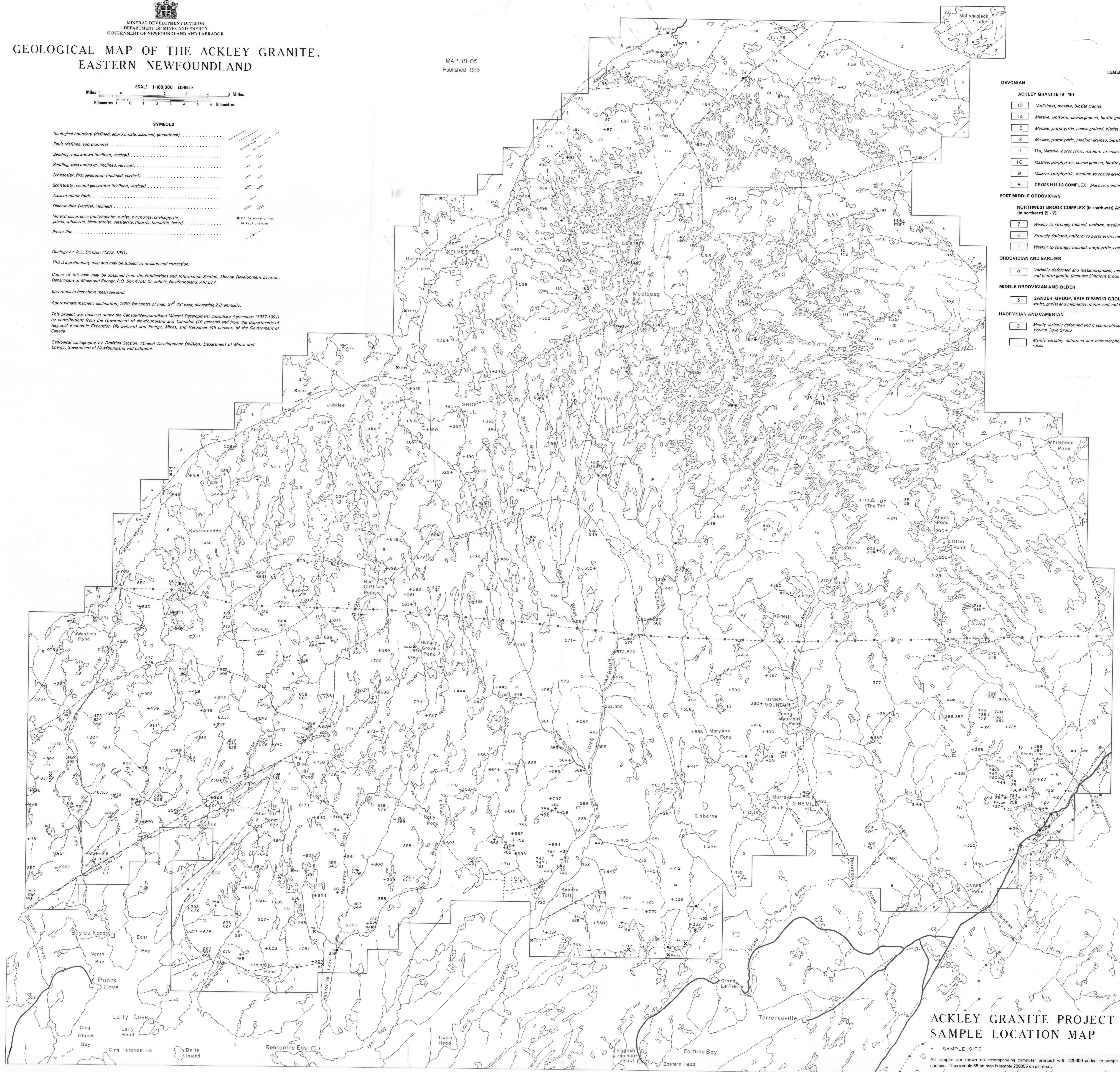
Copies of this map may be obtained from the Publications and Information Section, Mineral Development Division, Department of Mines and Energy, P.O. Box 4780, St. John's, Newfoundland, A1C 5T7.

Elevations in feet above mean sea level.

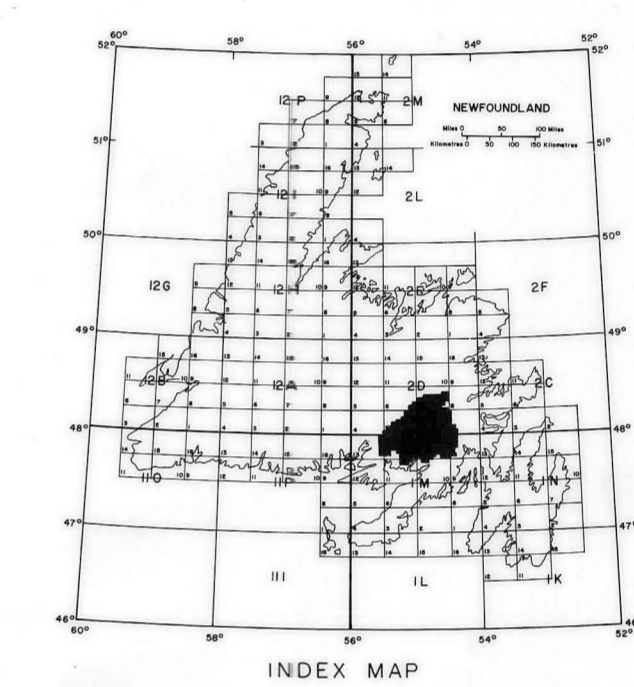
Approximate magnetic declination, 1969, for centre of map, 27° 43' west, decreasing 2.8' annually.

This project was financed under the Canada/Newfoundland Mineral Development Subsidary Agreement (1977-1981) by contributions from the Government of Newfoundland and Labrador (10 percent) and from the Departments of Regional Economic Expansion (45 percent) and Energy, Mines, and Resources (45 percent) of the Government of Canada.

Geological cartography by Drafting Section, Mineral Development Division, Department of Mines and Energy, Government of Newfoundland and Labrador.



- LEGEND**
- DEVONIAN**
- ACKLEY GRANITE (9-15)**
- 15 Unfolded, massive, biotite granite
 - 14 Massive, uniform, coarse grained, biotite granite; 14a, medium grained, slightly porphyritic equivalent
 - 13 Massive, porphyritic, coarse grained, biotite granite
 - 12 Massive, porphyritic, medium grained, biotite granite
 - 11 11a, Massive, porphyritic, medium to coarse grained, biotite granite; 11b, biotite-muscovite granite
 - 10 Massive, porphyritic, coarse grained, biotite granite
 - 9 Massive, porphyritic, medium to coarse grained, biotite ± hornblende granodiorite
 - 8 **CROSS HILLS COMPLEX:** Massive, medium grained, biotite granite and gabbro
- POST MIDDLE ORDOVICIAN**
- NORTHWEST BROOK COMPLEX (in southwest) AND EASTERN MEELPAEG COMPLEX (in northeast) (6-7)**
- 7 Weakly to strongly foliated, uniform, medium grained, muscovite ± garnet ± tourmaline granite
 - 6 Strongly foliated, uniform to porphyritic, medium grained, biotite ± muscovite granite
 - 5 Weakly to strongly foliated, porphyritic, coarse grained, biotite ± hornblende granite and granodiorite
- ORDOVICIAN AND EARLIER**
- 4 Variably deformed and metamorphosed, medium to coarse grained, hornblende - biotite granodiorite and biotite granite (includes Silurian Brook Basalts)
- MIDDLE ORDOVICIAN AND OLDER**
- 3 **GANDER GROUP, BAIE D'ESPOIR GROUP AND LITTLE PASSAGE GNEISSES:** Slate, phyllite, schist, gneiss and migmatite, minor acid and basic volcanic rocks
- HADRYNIAN AND CAMBRIAN**
- 2 Mainly variably deformed and metamorphosed clastic sediments; minor volcanic rocks and Cambrian Youngs Cove Group
 - 1 Mainly variably deformed and metamorphosed acid and basic volcanic rocks; minor sedimentary rocks



**ACKLEY GRANITE PROJECT
SAMPLE LOCATION MAP**

* SAMPLE SITE
All samples are shown on an accompanying computer printout with 220000 added to sample number. This sample 55 on map is sample 220055 on printout.

NFLD (4/83)