

1M(315)



GEOLOGY OF THE PARADISE PENINSULA AREA (BAR HAVEN to MARTICOT ISLAND) PLACENTIA BAY, NEWFOUNDLAND

(parts of 1M/7, 1M/8 and 1M/9)

C.F. O'DRISCOLL and S.J. O'BRIEN

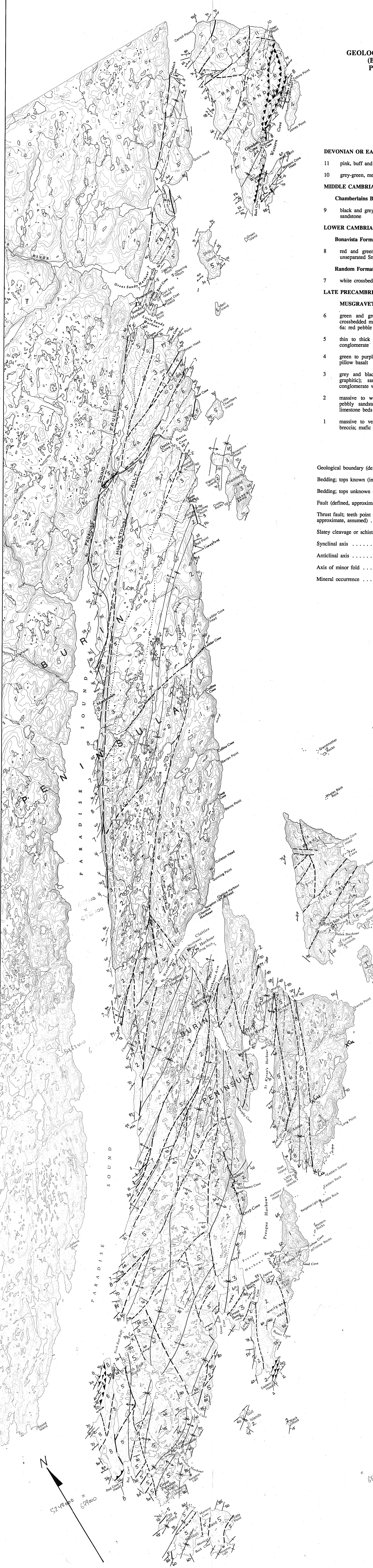
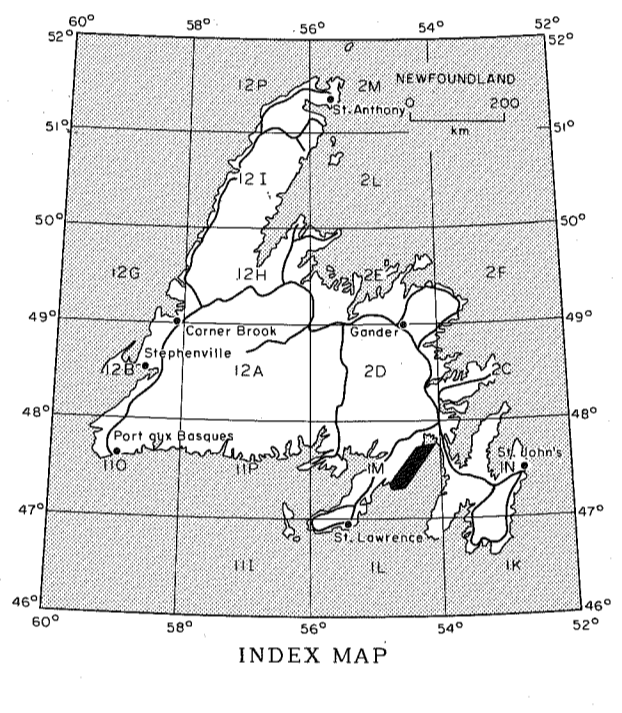
Scale 1:50,000
OPEN FILE 90-43

LEGEND

- DEVONIAN OR EARLIER**
- 11 pink, buff and grey, medium grained granite and granodiorite
 - 10 grey-green, medium to fine grained diorite and diabase
- MIDDLE CAMBRIAN**
- Chamberlains Brook Formation**
- 9 black and grey shale and siltstone containing beds and lenses of grey limestone and sandstone
- LOWER CAMBRIAN**
- Bonavista Formation**
- 8 red and green shale and slate; pink limestone beds and nodules (may include unseparated Smith Point and Brigus formations)
- Random Formation**
- 7 white crossbedded quartz arenite; interbeds of grey and green micaceous sandstone
- LATE PRECAMBRIAN**
- MUSGRAVETOWN GROUP**
- 6 green and grey, pebbly arkosic sandstone; grey, red and purple, rippled and crossbedded micaceous sandstone; quartz arenite; red monomict sedimentary breccia; 6a: red pebble to boulder conglomerate
 - 5 thin to thick beds of grey and green sandstone, siltstone and shale; imbricated conglomerate
 - 4 green to purple basaltic flows, agglomerate and tuff; interbedded limestone; minor pillow basalt
 - 3 grey and black shale and siltstone; black pyritiferous shale and slate (locally graphitic); sandstone-shale breccia and conglomerate; polyolithic breccia and conglomerate with a black shaly matrix
 - 2 massive to well-bedded, medium- to coarse-grained green and grey sandstone, pebbly sandstone, siltstone and minor conglomerate; laminated argillite; minor limestone beds
 - 1 massive to vesicular mafic flows, aquagene tuffs, agglomerate and related mafic breccia; mafic dykes; 1a: silicic pyroclastic rocks; rhyolite porphyry

SYMBOLS

- Geological boundary (defined, approximate, assumed)
- Bedding: tops known (inclined, vertical, overturned)
- Bedding: tops unknown (inclined, vertical)
- Fault (defined, approximate, assumed)
- Thrust fault; teeth point in direction of dip (defined, approximate, assumed)
- Slaty cleavage or schistosity (inclined, vertical)
- Synclinal axis
- Anticlinal axis
- Axis of minor fold
- Mineral occurrence



5244000

5244000

5244000

5244000