



LEGEND

- Mesoproterozoic**
- 25 = Sasi Lake Group (or equivalent) - polymictic conglomerate, arkose and pebbly arkose
 - 24 = syenite - massive syenite containing hornblende or pyroxene
 - 23 = Michikamau Granite - massive, megacrystic granite containing biotite, hornblende and accessory magnetite
 - 22 = Michikamau Intrusion - includes anorthosite, gabbro and trachyte (unsubdivided)

- GRENVILLE PROVINCE**
Paleoproterozoic (1720 - 1600 Ma)
- 32 = Platonic Complex - gabbroic rocks including ophiolite sheets (possible intrusion breccias) and green-weathering mafic dykes, and granitoid rocks including K-feldspar megacrystic granite, and granitoid rocks and mafic dyke suites

- EASTERN CHURCHILL PROVINCE**
NEW QUEBEC OROGEN
Paleoproterozoic
- 31 = Kaniapikau Supergroup (unsubdivided)
- Archean ?
- 30 = orthogneiss

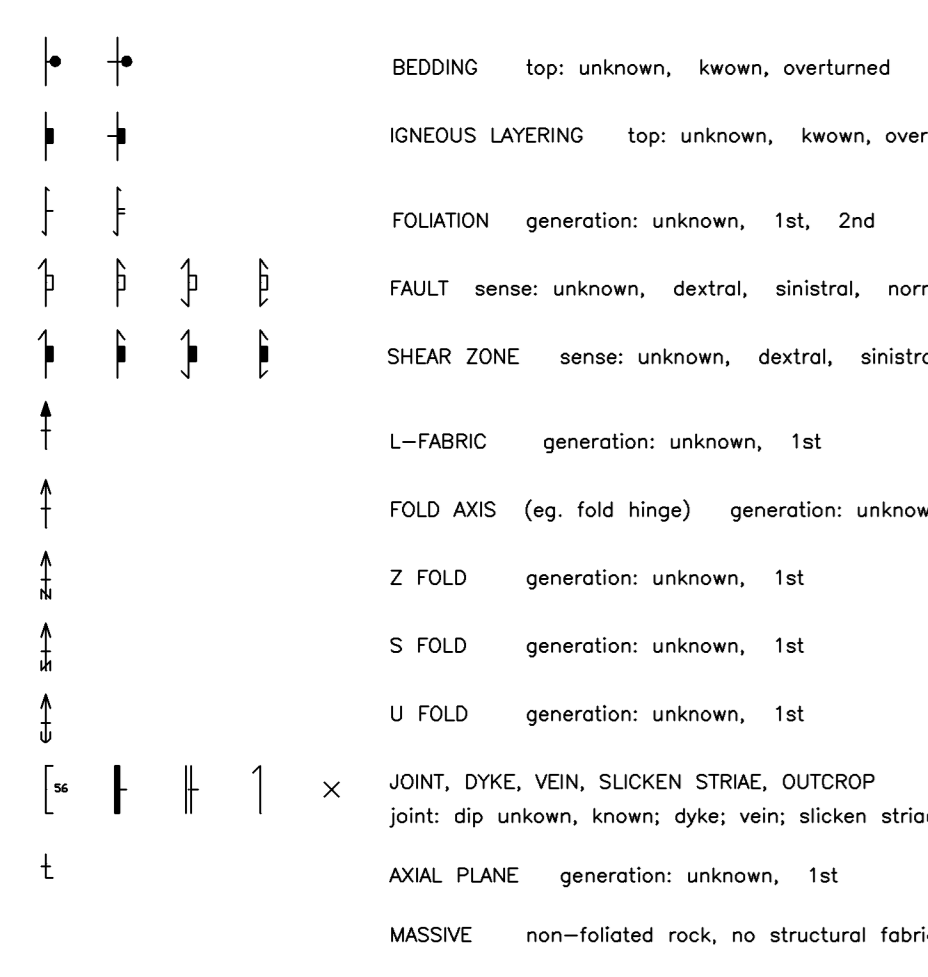
- MCKENZIE RIVER DOMAIN**
Paleoproterozoic
- 29 = gabbro - approximately north-trending bodies of variably recrystallized and foliated gabbro and amphibole
- Paleoproterozoic and Archean
- 28 = foliated and recrystallized granite, granodiorite and gneissic equivalents; includes local envelopes of migmatitic supracrustal rocks

- 27 = Flat Point tonalite
- 27a = tonalite and gneiss and migmatite; contains common mafic inclusions and/or deformed mafic dykes
- 27b = unit 27a containing envelopes of biotite - garnet migmatite
- 26 = Labradoric group
- 26a = biotite - garnet schist and gneiss
- 26b = quartzite
- 26c = marble and metamorphosed siliceous carbonate
- 26d = amphibolite schist and gneiss

- CROSSROADS DOMAIN**
Paleoproterozoic
- 21 = Petecopikau Group
 - 21a = cordierite-sillimanite hornfels and hornfelsic gneiss
 - 21b = interbedded phyllite, spotted phyllite, quartz wacke and quartzite
 - 20 = NE-trending mafic dykes
 - 19 = ENE-trending mafic dykes
 - 18 = granitic dykes - pink granitic dykes which are post-tectonic with respect to the gneissosity and foliation in the host rocks (units 1 to 15)
 - 17 = granite - isotropic to foliated and variably recrystallized granite dykes and small intrusions that are discordant to gneissic units and mafic dykes (units 1 to 15) in the Overflow Lake area

- 16 = De Pas Batholith
- 16a = variably recrystallized and foliated K-feldspar megacrystic granite containing biotite and hornblende
- 16b = charnockite - texturally similar to unit 16a
- 16c = isotropic to foliated granite
- 16d = megacrystic monzonite, quartz monzonite and deformed equivalents
- 16e = syenite, quartz syenite
- 16f = gabbro, diorite
- 15 = Central Dykes 4 - unsubdivided unit including dykes of several ages and probably dykes belonging to units 11 to 14
- 14 = Central Dykes 3 - grey-weathering mafic dykes containing hornblende porphyroblasts
- 13 = Central Dykes 2 - thin, black-weathering metamorphosed and foliated mafic dykes
- 12 = Central Dykes 1 - tonalite dykes - "spotted" tonalite dykes containing hornblende porphyroblasts
- 11 = pyroxenite - small dykes and intrusions of metamorphosed pyroxenite and gabbroanorthite
- 10 = syenite - variably foliated and recrystallized syenite and megacrystic syenite containing biotite and local hornblende or clinopyroxene; gradational with unit 9
- 9 = K-feldspar megacrystic granite - variably foliated and recrystallized megacrystic granite containing biotite and local hornblende; locally gradational into equigranular granite (unit 8?)
- 8 = granite, granite gneiss - pink to white to grey weathering biotite monzonite and quartz monzonite containing local hornblende; generally equigranular, variably foliated and locally gneissic
- 7 = monzonite and quartz monzonite containing numerous mafic inclusions and relicts of deformed mafic dykes

- Archean
- 6 = granitoid gneiss and migmatite - pink-, grey- or white-weathering granitoid gneiss, migmatite and local granitoid granule gneiss may contain rocks of several ages and inclusions of supracrustal rocks
 - 6a = unsubdivided, heterogeneous granite, granodiorite and gneissic equivalents; probably includes rocks belonging to units 7 to 10, and unit 4
 - 5 = anorthosite and gabbroic anorthosite - recrystallized and foliated sheets of anorthosite and gabbroic anorthosite
 - 4 = tonalite, tonalite gneiss and migmatitic tonalite, mafic tonalite; contains abundant inclusions of mafic rocks (unit 3) and inclusions of metasedimentary rocks (unit 1)
 - 3 = mafic orthogneiss - gabbro, diorite, mafic tonalite and gneissic equivalents; locally the rocks are very well layered and are inferred to be derived from layered mafic intrusions
- Overflow Group
- 2 = mafic gneiss - mainly mafic volcanic rocks and minor amounts of felsic rocks and chert-magnetite iron formation
 - 1 = biotite-magnetite - biotite-garnet metasedimentary gneiss and migmatite, minor amounts of chert-magnetite iron formation, and heterogeneous supracrustal gneiss including units 1 and 2; the unit also contains local mafic sills and dykes, and relicts of layered mafic intrusions inferred to be equivalent to unit 3



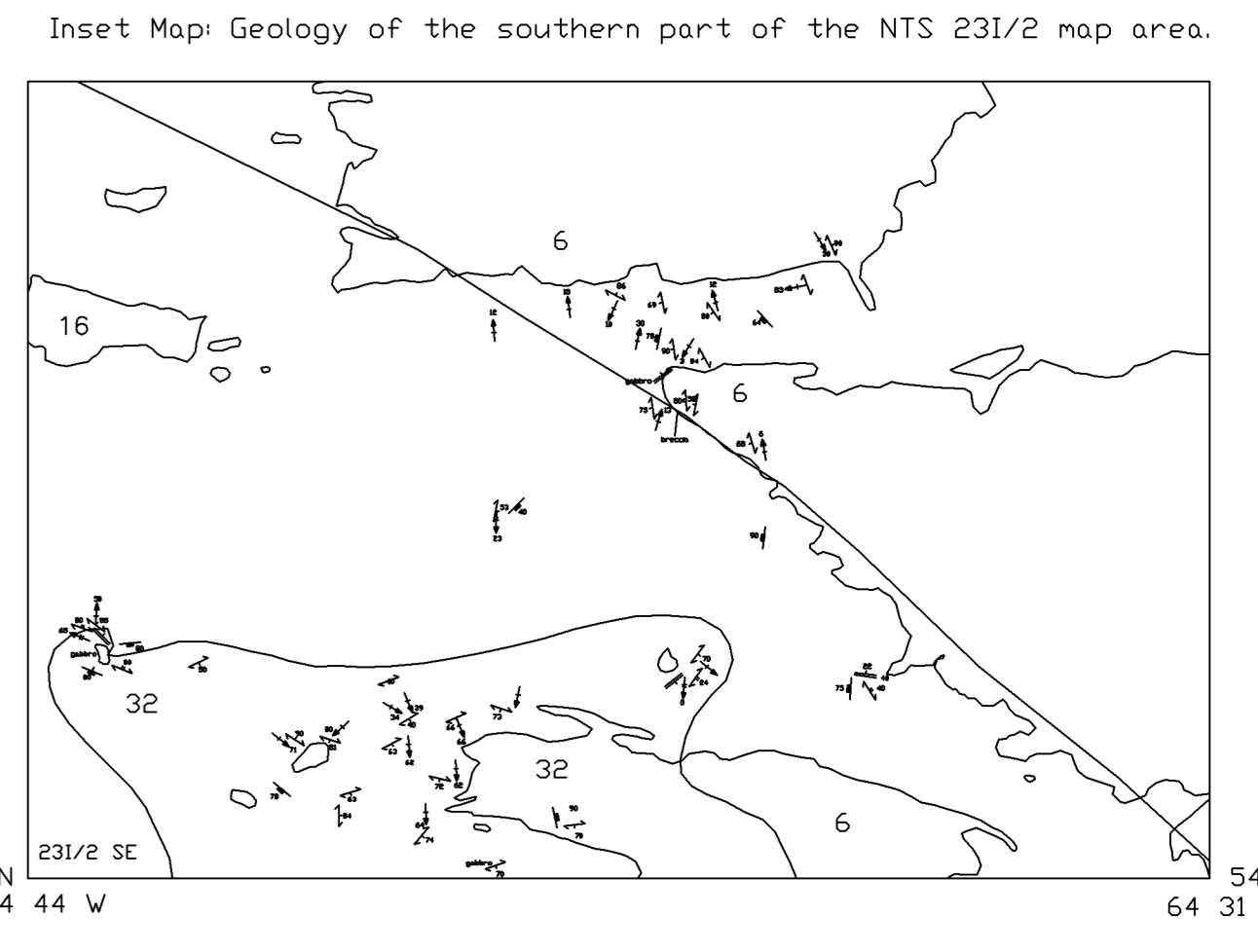
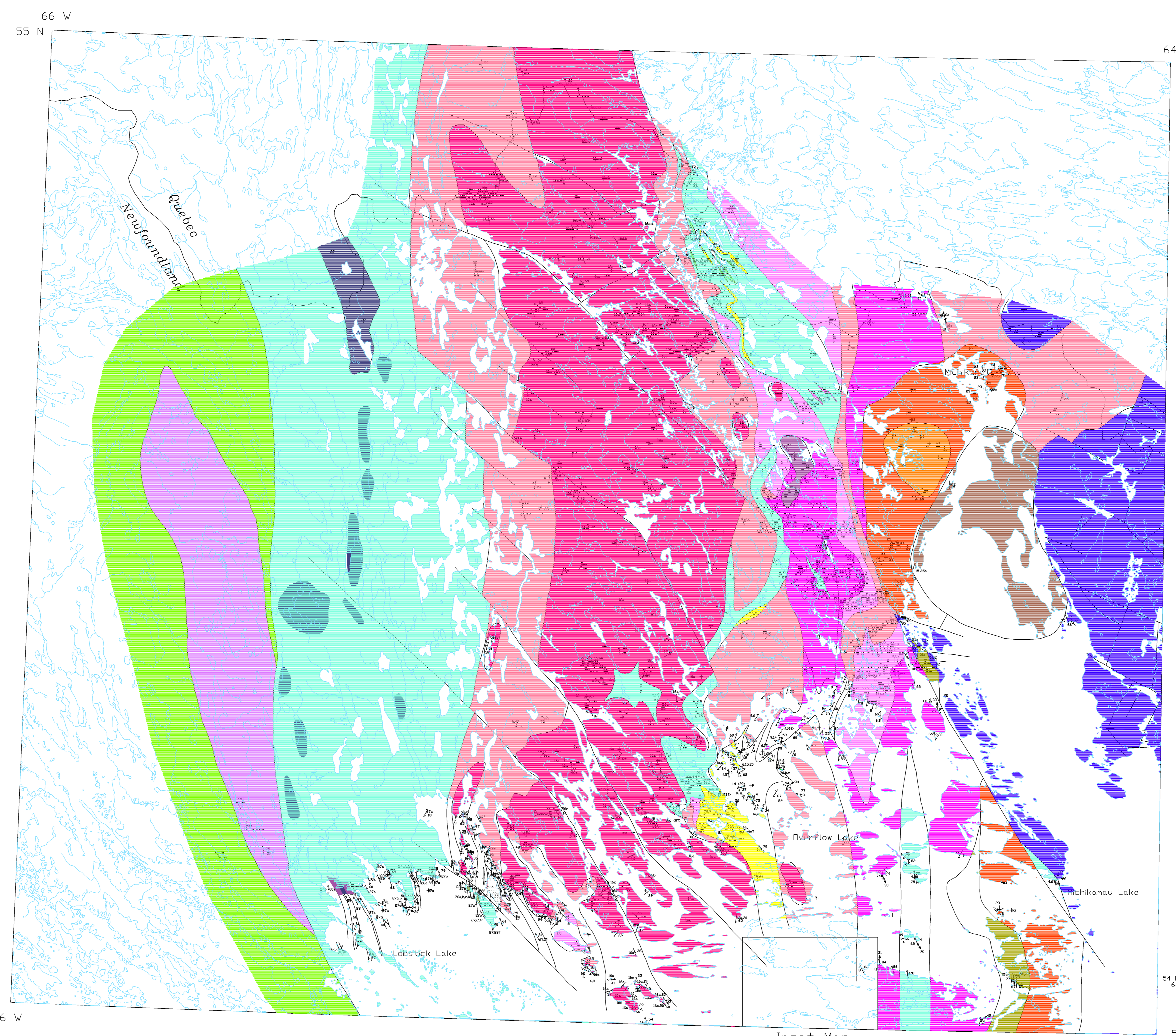
OPEN FILE 0231/0076
MAP NUMBER: 94-239

This map accompanies Open File report 0231/0076.

COMPILED BY DONALD T. JAMES
MAP PREPARATION BY D.T. JAMES, L. NOWLAN T. LEAWOOD

This map is subject to review and revision. Comments concerning errors or omissions are invited and should be addressed to the Executive Director, Geological Survey Branch, Department of Mines and Energy, P.O. Box 8700, St. John's Newfoundland, A1B 4J6
Copies of this map may be obtained from the Publications and Information Section, Geological Survey Branch, P.O. Box 8700, St. John's Newfoundland, A1B 4J6

Recommended Citation:
James, D.T.
1994: Geology of the Woods Lake area (NTS area 231), western Labrador. Geological Survey Branch, Department of Mines and Energy, Open File Map 94-239, scale 1:200,000.



Geology of the Woods Lake area (NTS 231),
western Labrador.

Map 94 - 239

