



GRANULAR-AGGREGATE RESOURCES OF THE NTS AREA 13A/14

OPEN FILE 013A/14/0054
MAP 2005-24

LEGEND

- Sample types (based on laboratory sieve analysis - see Table 1)
- Sample Symbol**
- Commonly gravel or sand, having silt-clay content < 5 percent. Deposits are commonly graded and stratified. Example: 033009
- Location of sample 3009 taken in 2003, containing 0.9 percent silt-clay.
 - ▲ Commonly silt, poorly graded and of variable grain size, having a silt-clay content (≥ 5 and ≤ 15 percent) and stone size exceeding allowable limits for most geotechnical purposes (except subgrade uses) without processing (i.e., washing, screening or crushing); Example: 033018 - Location of sample 3018 taken in 2003, containing 7.3 percent silt-clay.
 - ⊕ Commonly silty silt, silt or clay samples, having silt-clay content > 15 percent. Example: 043701 - Location of sample 3701 taken in 2004, containing 29.6 percent silt-clay.

NOTE: This is a composite legend for all aggregate-resource maps. All aggregate zones and sample types shown in the legend may not appear on this map. Aggregate zone classification is based on airphoto interpretation, field investigation and sieve analysis. Areas outside the numbered zones have no known potential for granular materials; however silty tills, rock rubble suitable for fill, and bedrock suitable for aggregate may be present. Classification criteria used on this map do not consider current or conflicting land uses, nor do they guarantee either access to, or the quality of, the material located within these zones.

ZONES OF AGGREGATE POTENTIAL

- Contains granular materials; probability of locating economic deposits is moderate to high
- Contains thin (less than 2 m) or discontinuous granular materials; also includes areas where extent of thicker deposits could not be determined by field investigation; probability of locating economic deposits is moderate to low
- May contain granular materials but deposits are not substantiated by field investigation; probability of locating economic deposits is moderate to low
- Material of granular composition (e.g., sandy tills and colluvium) that generally contains up to 8 percent silt-clay content, but could be improved for higher grade uses by washing or screening
- Contains sand-size granular materials; high potential for economic exploitation of sand; low to moderate potential for coarser granular materials
- Eskers: sinuous ridges of granular materials; moderate to high potential for economic exploitation
- Study Area

In addition to this map data, an aggregate database is accessible in the Geosciences Resource Atlas of Newfoundland and Labrador (<http://gis.geosur.gov.nl.ca>) for all granular-aggregate maps and sample data. The database provides information on more than 13 000 samples collected from 230, 1:50 000-scale map areas in Newfoundland and Labrador. An aggregate-resource report (Ricketts, 2005) and surficial maps (Fulton and Hodgson, 1970; Fulton, Ming, and Hodgson, 1979) are also available for this map area.

This map was produced from airphoto interpretation and field work conducted in 2003 and 2004 (Ricketts, 2005).
The location of roads added to the topographic map base are approximate.
Elevation in metres above mean sea level. Contour interval 10 metres.
Geology by M.J. Ricketts, Geological Survey, Department of Natural Resources, Government of Newfoundland and Labrador.
Digital Cartography by T. Paltanavage, Geological Survey, Department of Natural Resources, Government of Newfoundland and Labrador.
Copies of this map may be obtained from the Geoscience Publications and Information Section, Geological Survey, Department of Natural Resources, P.O. Box 8700, St. John's, Newfoundland, Canada, A1B 4X6.
This map is subject to review and revision. Comments to the author concerning errors or omissions are invited.
Base from maps published by Surveys and Mapping Branch, Department of Natural Resources, Ottawa, Canada.

OPEN FILE 013A/14/0054
PUBLISHED 2005

- REFERENCES**
- Fulton, R.J. and Hodgson, D.
1970: Surficial geology (uncontrolled mosaic; 1:50 000 scale). Geological Survey of Canada, Project 690043, Open File 59.
 - Fulton, R.J., Ming, G.V. and Hodgson, G.V.
1979: Surficial materials, Battle Harbour, Labrador, Newfoundland (1:250 000 scale). Department of Energy, Mines and Resources, Geological Survey of Canada, Ottawa, Map 19.
 - Kirby, F.T., Ricketts, R.J. and Vanderveer, D.G.
1983: Inventory of aggregate resources in Newfoundland and Labrador: information report and index maps. Newfoundland Department of Mines and Energy, Mineral Development Division, Report 83-2, 36 pages.
 - Ricketts, M.J.
2005: Granular - aggregate mapping in southeast Labrador. Newfoundland Department of Natural Resources, Report 05-1, pages 27-37.

Recommended citation:
Ricketts, M.J.
2005: Granular-aggregate resources of the NTS area 13A/14. Government of Newfoundland and Labrador, Department of Natural Resources, Geological Survey, Map 2005-24, Open File 013A/14/0054.

Note:
Open File reports and maps issued by the Geological Survey Division of the Newfoundland and Labrador Department of Natural Resources are made available for public use without being formally edited or peer reviewed. They are based upon preliminary data and evaluation. The purchaser agrees not to provide a digital reproduction or copy of this product to a third party. Derivative products should acknowledge the source of the data.

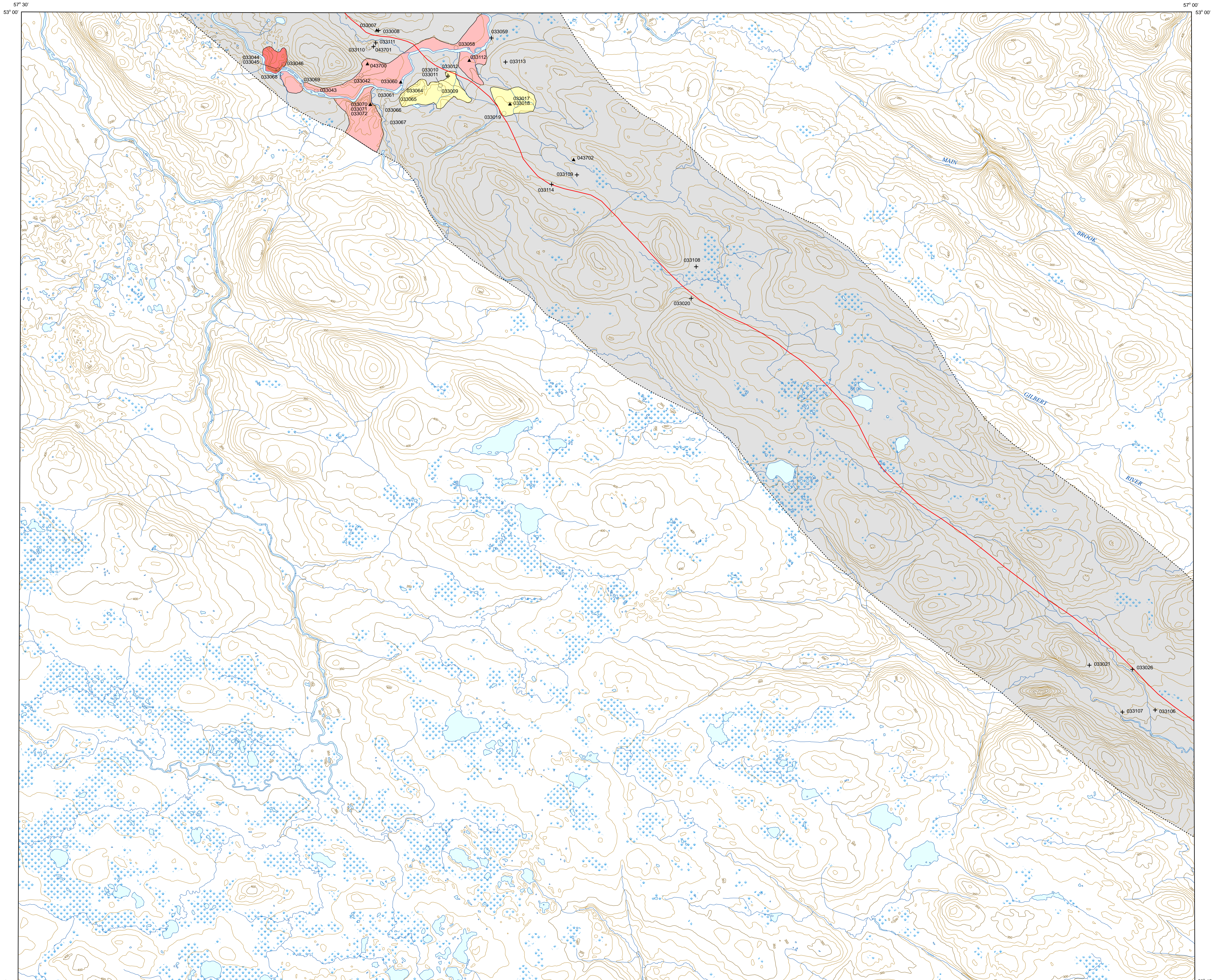
Disclaimer:
The Geological Survey, a division of the Department of Natural Resources (the "authors and publishers"), retains the sole right to the original data and information found in any product produced. The authors and publishers assume no legal liability or responsibility for any alterations, changes or misrepresentations made by third parties with respect to these products or the original data. Furthermore, the Geological Survey assumes no liability with respect to claims of original products or copies of original products or for derivative products made by third parties. Please consult with the Geological Survey in order to ensure originality and correctness of data and/or products.

GRAIN-SIZE ANALYSES

Grain-size results from the 63, 32, 16 and 8 mm mesh sieves were obtained at the sample site location by sieving between 10 and 15 kg of material. A 500 to 1000 g split of the <8 mm material (sand-silt-clay) was retained for laboratory sieve analysis. Laboratory sieve analyses included the use of seven sieves with mesh openings of 4, 2, 1, 0.5, 0.25, 0.125, 0.062 and <0.062 mm. Samples were wet and dry sieved (Kirby et al., 1983) depending on silt-clay content and consolidation of particles.

Table 1: Exposure thickness (Exp), estimated deposit thickness (Dep), petrographic numbers (PN), grain-size percentages (based on percent retained on the 63 mm down to the <0.062 mm mesh sieves) and gravel (Grv), sand and silt-clay (SL-CL) content of sample material collected in NTS area 13A/14.

Sample	Exp	Dep	PN	63	32	16	8	4	2	1	0.5	0.25	0.125	0.062	Grv	Sand	SL-CL
033007	5.0	4.0	8.5	5.3	6.3	5.0	7.0	9.6	12.7	16.3	10.0	5.0	6.5	30.6	61.4	0.0	
033008	2.0	3.0	0.0	0.0	0.0	0.0	0.0	0.0	0.1	0.1	0.1	0.1	0.1	0.7	98.8	0.0	
033009	2.0	6.0	218	21.7	6.7	8.9	10.6	8.0	8.6	11.7	13.7	7.1	1.7	0.8	0.7	53.8	45.4
033010	5.0	5.0	0.0	0.0	0.0	0.0	0.0	0.0	0.0	0.0	0.0	0.0	0.0	0.0	0.0	0.0	0.0
033011	5.0	5.0	0.0	0.0	0.0	0.0	0.0	0.0	0.0	0.0	0.0	0.0	0.0	0.0	0.0	0.0	0.0
033012	3.0	4.0	0.0	0.0	0.0	0.0	0.0	0.0	0.0	0.0	0.0	0.0	0.0	0.0	0.0	0.0	0.0
033017	1.4	1.2	184	4.3	10.2	14.2	24.9	6.8	10.8	13.1	16.4	8.1	3.7	28.5	49.7	13.9	3.8
033018	1.4	1.2	0.0	0.0	0.0	0.0	0.0	0.0	0.0	0.0	0.0	0.0	0.0	0.0	0.0	0.0	0.0
033019	1.5	1.5	248	0.0	12.1	14.0	15.2	12.8	12.9	13.1	8.9	9.1	1.6	0.2	0.1	50.9	49.0
033020	8.0	8.0	224	14.0	5.2	3.6	5.7	3.3	3.3	5.8	7.7	11.3	11.3	8.6	20.4	31.0	48.5
033021	1.5	3.0	165	0.0	12.2	5.4	9.5	2.8	4.7	5.8	3.3	11.8	11.9	9.1	18.6	29.1	50.1
033026	1.3	5.0	233	16.4	8.9	3.7	5.2	2.9	4.2	4.7	7.3	11.3	12.3	8.7	14.3	36.3	47.1
033042	0.8	18.0	0.0	0.0	0.0	0.0	0.0	0.0	0.0	0.0	0.0	0.0	0.0	0.0	0.0	0.0	0.0
033043	2.0	4.0	0.0	0.0	0.0	0.0	0.0	0.0	0.0	0.0	0.0	0.0	0.0	0.0	0.0	0.0	0.0
033044	8.0	40.0	170	21.7	11.1	13.6	12.6	7.6	7.8	13.2	8.3	3.1	0.7	0.2	0.1	64.8	35.1
033045	8.0	40.0	0.0	0.0	0.0	0.0	0.0	0.0	0.0	0.0	0.0	0.0	0.0	0.0	0.0	0.0	0.0
033046	1.5	40.0	0.0	0.0	0.0	0.0	0.0	0.0	0.0	0.0	0.0	0.0	0.0	0.0	0.0	0.0	0.0
033058	1.0	5.0	160	15.8	21.5	13.3	10.7	8.3	6.4	6.2	9.5	5.7	1.6	0.7	0.4	67.5	31.9
033059	1.0	5.0	0.0	0.0	0.0	0.0	0.0	0.0	0.0	0.0	0.0	0.0	0.0	0.0	0.0	0.0	0.0
033060	1.0	5.0	277	0.0	0.0	0.0	0.0	0.0	0.0	0.0	0.0	0.0	0.0	0.0	0.0	0.0	0.0
033061	1.0	20.0	0.0	0.0	0.0	0.0	0.0	0.0	0.0	0.0	0.0	0.0	0.0	0.0	0.0	0.0	0.0
033064	1.2	8.0	0.0	0.0	0.0	0.0	0.0	0.0	0.0	0.0	0.0	0.0	0.0	0.0	0.0	0.0	0.0
033065	1.0	15.0	141	0.0	0.0	0.0	0.0	0.0	0.0	0.0	0.0	0.0	0.0	0.0	0.0	0.0	0.0
033066	1.0	15.0	0.0	0.0	0.0	0.0	0.0	0.0	0.0	0.0	0.0	0.0	0.0	0.0	0.0	0.0	0.0
033067	0.8	8.0	0.0	0.0	0.0	0.0	0.0	0.0	0.0	0.0	0.0	0.0	0.0	0.0	0.0	0.0	0.0
033068	0.7	40.0	167	15.9	6.7	8.2	11.3	10.1	8.7	11.4	13.9	9.5	1.9	0.3	0.1	50.6	49.2
033069	2.0	8.0	0.0	0.0	0.0	0.0	0.0	0.0	0.0	0.0	0.0	0.0	0.0	0.0	0.0	0.0	0.0
033070	2.0	40.0	0.0	0.0	0.0	0.0	0.0	0.0	0.0	0.0	0.0	0.0	0.0	0.0	0.0	0.0	0.0
033071	1.5	40.0	0.0	0.0	0.0	0.0	0.0	0.0	0.0	0.0	0.0	0.0	0.0	0.0	0.0	0.0	0.0
033072	2.0	40.0	0.0	0.0	0.0	0.0	0.0	0.0	0.0	0.0	0.0	0.0	0.0	0.0	0.0	0.0	0.0
033106	0.8	4.0	0.0	0.0	0.0	0.0	0.0	0.0	0.0	0.0	0.0	0.0	0.0	0.0	0.0	0.0	0.0
033107	0.8	4.0	397	0.0	0.0	0.0	0.0	0.0	0.0	0.0	0.0	0.0	0.0	0.0	0.0	0.0	0.0
033108	1.0	3.0	0.0	0.0	0.0	0.0	0.0	0.0	0.0	0.0	0.0	0.0	0.0	0.0	0.0	0.0	0.0
033109	1.0	3.0	180	5.4	7.4	8.0	6.7	3.6	7.4	8.1	10.2	11.9	10.0	7.1	14.4	30.1	53.7
033110	1.4	15.0	170	0.0	0.0	0.0	0.0	0.0	0.0	0.0	0.0	0.0	0.0	0.0	0.0	0.0	0.0
033111	1.4	15.0	170	0.0	0.0	0.0	0.0	0.0	0.0	0.0	0.0	0.0	0.0	0.0	0.0	0.0	0.0
033112	1.0	5.0	0.0	0.0	0.0	0.0	0.0	0.0	0.0	0.0	0.0	0.0	0.0	0.0	0.0	0.0	0.0
033113	1.0	10.0	229	8.8	10.5	6.4	7.6	3.7	3.4	4.9	7.7	11.5	11.4	8.3	15.7	36.1	46.1
033114	2.0	0.0	250	6.0	4.2	5.4	5.4	2.3	4.6	6.0	10.1	13.8	11.2	9.8	21.2	22.7	53.7
043700	1.1	15.0	0.0	0.0	0.0	0.0	0.0	0.0	0.0	0.0	0.0	0.0	0.0	0.0	0.0	0.0	0.0
043701	1.2	15.0	0.0	0.0	0.0	0.0	0.0	0.0	0.0	0.0	0.0	0.0	0.0	0.0	0.0	0.0	0.0
043702	1.2	6.0	138	2.8	6.7	5.6	7.8	7.9	6.9	8.6	10.1	14.1	12.8	7.8	8.8	28.8	60.4



MAP 2005-24
UNTITLED
LABRADOR
Scale 1:50 000
Kilometres

