

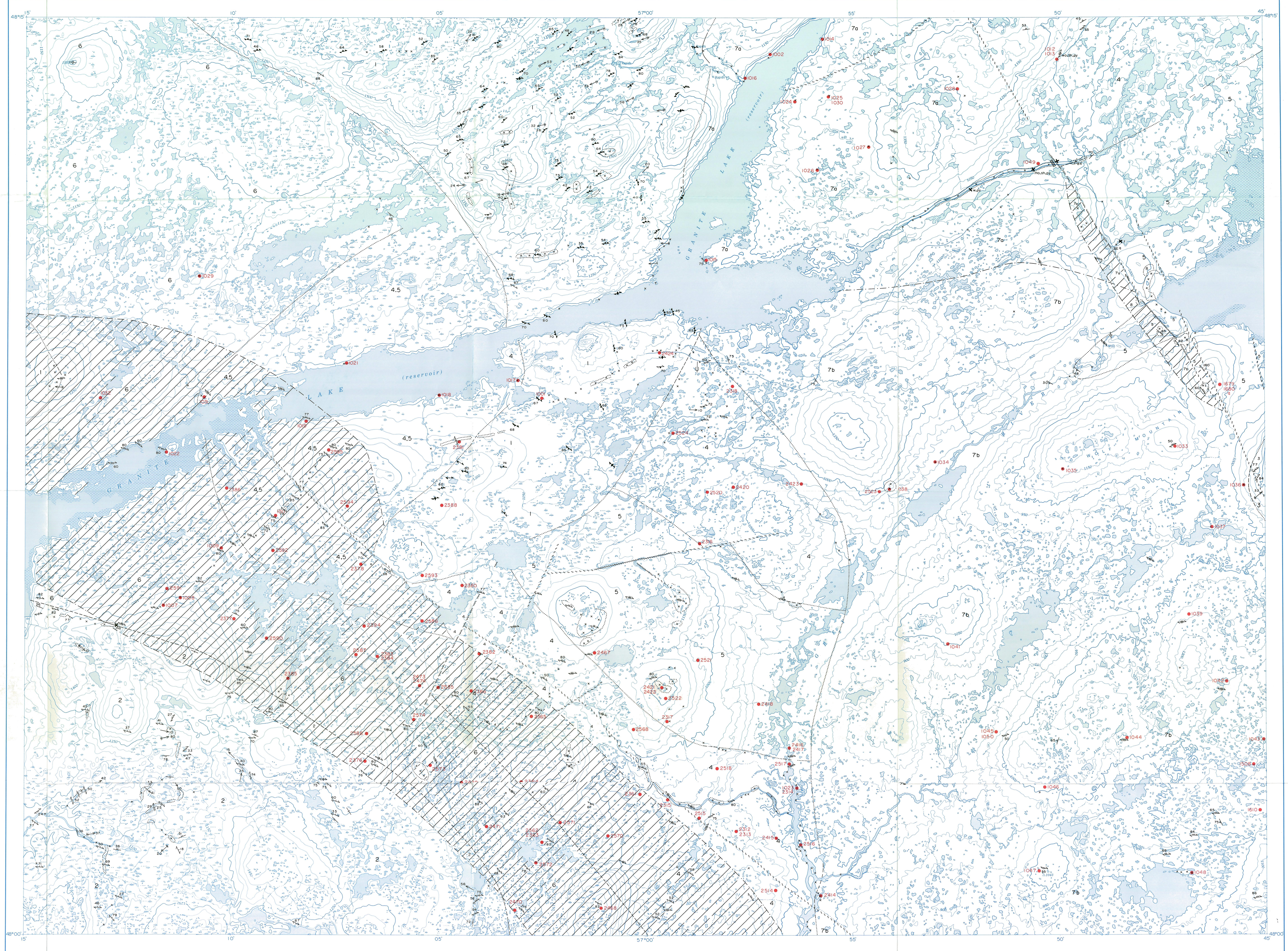
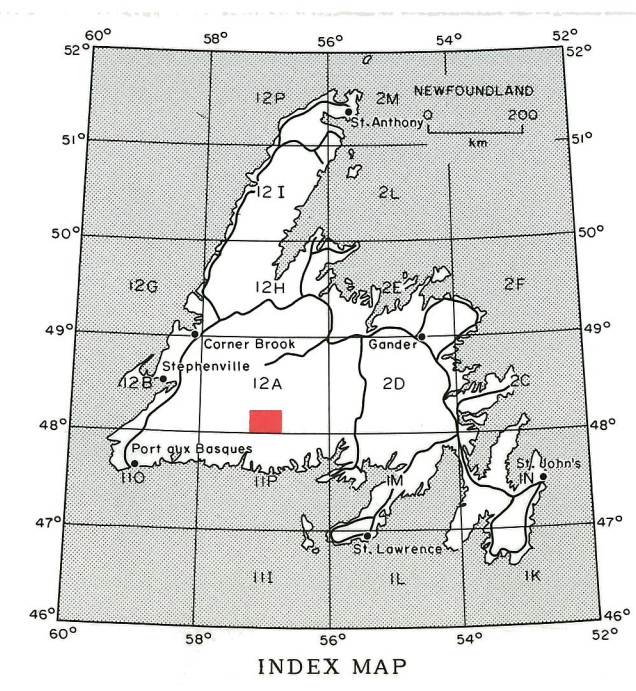
Published 1989

LEGEND

- SILURIAN - DEVONIAN**
- 8 Grey to pink, brecciated and hematized, plagioclase porphyritic rhyolite
- NORTH BAY GRANITE SUITE (Units 4 to 7)**
- 7 Coarse grained, massive to weakly deformed, porphyritic, muscovite - biotite granite; 7a, pink to red granite, locally altered, sheared and cut by quartz; 7b, buff to pink granite, locally cut by garnetiferous pegmatites
 - 6 Buff to pink, coarse grained, porphyritic, biotite granite with minor medium grained, uniform, biotite granite
 - 5 Buff to white, medium grained, equigranular, weakly foliated, biotite ± muscovite granite. Locally cut by garnetiferous pegmatites
 - 4 Grey, medium grained, equigranular, foliated to massive, biotite granodiorite and tonalite
- ORDOVICIAN(?)**
- 3 Thin- to medium-bedded, garnet - biotite - muscovite psammitic schist. Locally contains andalusite and fibrolite
 - 2 Grey to buff, thin- to medium-bedded metaquartzite, phyllite, slate, and graphitic black shale. Locally, contains crossbeds, graded beds, parallel laminations, and rarely slump structures
 - 1 Grey foliated migmatite; pelosome composed of psammitic muscovite - biotite ± garnet ± allimanite schist; neosome composed of foliated biotite ± muscovite granodiorite and minor granite pegmatite. Locally contains inclusions of metaquartzite and amphibolite

SYMBOLS

- Geological boundary (defined, approximate, assumed, gradational)
 - Fault (defined, approximate, assumed)
 - Bedding, tops known (inclined, vertical, overturned)
 - Bedding, tops unknown (inclined, vertical)
 - Primary igneous layering (inclined)
 - Cleavage, schistosity; first generation (inclined, vertical, dip unknown)
 - Cleavage, schistosity; second generation (inclined, vertical)
 - Cleavage, schistosity; third generation (inclined, vertical)
 - Gneissic foliation (inclined, vertical, dip unknown)
 - Axes of minor folds; first generation (inclined)
 - Minor fold axes; second generation (inclined)
 - Glacial striae (direction of ice movement known)
 - Rock outcrop, area of outcrop, where not otherwise indicated by geological symbol
 - Mylonite zone
 - Mineral occurrence (molybdenite, wolframite, scheelite, pyrite, fluorite, quartz)
 - Vein (quartz)
 - Geochemical sample location on listing numbers 1001 - 1049 prefixed by 22xxxx numbers 2300 and up prefixed by 224xxxx
- Geology from Dickson, 1982 (Report 82-5)
 Geological cartography by Drafting Section, Geological Survey Branch, Department of Mines and Energy, Government of Newfoundland and Labrador.
 Copies of this map may be obtained from the Publications and Information Section, Geological Survey Branch, Department of Mines and Energy, P.O. Box 8700, St. John's A1B 4J6.
 Base maps at same scale published by the Surveys and Mapping Branch, Department of Energy, Mines and Resources, Ottawa, 1972.
 Approximate magnetic declination, 1989, 26°5.2' W, decreasing 3.8' annually.



COPYRIGHT
 This map is based on information taken from map sheet N.T.S. map sheet number 12A/Civ. 6, 12A/Civ. 6
 Her Majesty the Queen in Right of Canada with permission of Energy, Mines and Resources Canada.

MAP 89-98
GEOLOGY OF THE WOLF MOUNTAIN (WEST HALF), AND BURNT POND (EAST HALF) MAP AREAS WITH GEOCHEMICAL SAMPLE SITES IN THE NORTH BAY GRANITE SUITE

