

**LEGEND**

Each outlined area is assigned a classification consisting of up to three generic categories and modifiers that designate the types of deposits within each area. Each category within a classification is listed in order of dominance and is separated from the other categories by a slash (e.g., TvR). Generally, the areas are divided so that up to three landforms or deposit types are identified within a given area. The classification system is also used to indicate the approximate percentage of landforms occurring within an outlined area, but those which form less than 5 percent of the area are not included in the classification. Four variations of the landform system are as follows:

- Where three different landforms are included in a single map unit they are each separated by a single slash (/) and their relative percentages are (60 - 80), (15 - 35), and (5 - 15).
- Where two landforms are included in a single map unit, a double slash (//) or single slash (/) is used to separate them, and their relative percentages are (85 - 95) // (5 - 15) for double slash, or (80 - 85) / (15 - 40) for a single slash.
- A hyphen between two landform types indicates that they are approximately equal in area. For example, Tv-Rc indicates that till veneer and rock concealed by vegetation or a thin regolith are equal in area.
- A composite symbol is used to show combinations of the above cases. For example,  $\frac{Rc}{G}$  indicates that about 60 - 85 percent of the area is covered by fluvial sediment, 15 - 40 percent by glaciofluvial sediments, and is underlain by till.

**GENETIC CLASSIFICATION**

| Symbol         | Depositional Environments | Origin and Characteristics of Materials   |
|----------------|---------------------------|---|
| O              | Bog                       | Poorly drained accumulations of peat, peat moss and other organic matter; developed in areas of poor drainage.  |
| F              | Fluvial                   | Alluvium consisting of silt and clay to bouldery gravel; forms terraces and plains associated with modern stream channels, their floodplains and deltas; usually less than 1 m thick; deposited by fluvial action at or below maximum flood levels.   |
| C              | Colluvial                 | Coarse-grained bedrock derived materials; may include sand, silt or clay; accumulates on the lower parts, or at the base of steep rock faces; transported by gravity.   |
| E              | Aeolian                   | Medium to fine-grained sand and silt, well sorted, poorly compacted; commonly forms as dunes up to 10 m high, transported and deposited by wind.  |
| G              | Glaciofluvial             | Fine-grained sand to coarse-grained cobbly gravel; forms plains, ridges (eskers), hummocks, terraces and deltas; generally greater than 1 m thick; deposited as outwash in an ice-contact or proglacial position.   |
| L              | Lacustrine                | Silt, clay, gravel and sand; forms as plains and blankets; silt and clay is deposited in freshwater lakes from suspension, sand and silt by lake-floor currents, gravel and sand by shoreline wave action.  |
| M              | Marine                    | Clay, silt, gravel and diatomite; sand is present in some places, generally moderately to well sorted and commonly stratified, but may be massive; forms beach ridges, deltas, terraces and bars deposited in a marine environment; gravel and sand are formed by shoreline wave action; may include shells, clay and silt deposited from suspension and turbidity currents; gravel is generally a wave-washed lag. |
| Tv             | Glacial                   | Includes all types of till; composed of diamicton; transported and subsequently deposited by/for glacial ice with no significant sorting by water. These include relatively thin (Tv) or thicker (Tb, Tc, Tp, Tt) till with little or no surface expression; features produced by actively flowing ice (Td, Tl, Tr) or sediment deposited through ice disintegration (Th, Tk).                                      |
| Tb, Tc, Tp, Tt |                           |   |
| Td, Tl, Tr     |                           |   |
| Th, Tk         |                           |   |
| R              | Rock                      | Bedrock, either exposed (R) or concealed by vegetation (Rc)   |

**MORPHOLOGY**

| Symbol | Morphology              | Description   |
|--------|-------------------------|---|
| a      | apron                   | A relatively gentle slope at the foot of a steeper slope, commonly used to describe colluvium at the base of a rock escarpment; consists of materials derived from the usually steeper upper slope.   |
| b      | blanket                 | Any deposit greater than 1.5 m thick; minor irregularities of the underlying unit are masked but the major topographic form is still evident.   |
| c      | concealed by vegetation | Vegetation that developed on either colluvial surfaces or a thin layer of angular frost-shattered and frost-heaved rock fragments overlying bedrock; includes areas of shallow (less than 1 m), discontinuous overburden.   |
| d      | drumlinoid              | Elongate ridge(s) between 1.5 and 20 m high, 20 and 300 m wide, and 200 to 5000 m long; ridges have a rounded end pointing in the up-ice direction and gently curving sides that taper in the down-ice direction; exhibit a convex longitudinal profile, commonly with a steeper slope in the up-ice direction; consist of subglacially formed deposits shaped in a streamlined form parallel to the direction of glacial flow, commonly consist of till, although some may contain stratified drift; may have a rock core.   |
| e      | eroded and dissected    | A series of closely spaced gullies or deeply incised channels; can have a dendritic pattern or may be a single straight or arcuate channel; gullies and channels may contain underfit streams.  |
| f      | fan                     | A gently sloping accumulation of debris deposited by a stream issuing from a valley onto a lowland; has its apex at the mouth of the valley from which the stream issues; the fan shape results from the deposition of material as the stream swings back and forth across the lowland; fluvial fans are usually derived from eroded glacial and glaciofluvial deposits; glaciofluvial fans (deltas) are deposited in standing water rather than in a terrestrial environment; colluvial fans are derived from bedrock and are usually steeper (i.e., cone shaped). |
| h      | hummock                 | An apparently random assemblage of knobs, mounds, ridges and depressions without any pronounced parallelism, significant form or orientation; formed by glacial melting during ice stagnation and disintegration. Includes subglacial, englacial, supraglacial and stratified materials.  |
| k      | kettle                  | A basin or bowl-shaped closed depression or hollow in glacial drift; results from the melting of a buried or partly buried detached block or lens of glacial ice; commonly occurs in association with hummocks.   |
| l      | lineated                | Elongate spindle-shaped ridge(s) between 6 and 60 m high, 75 and 300 m wide and up to 4000 m long; ridges are commonly steep-sided, taper at one or both ends, and have a flat longitudinal profile; consist of subglacially formed deposits shaped in a streamlined form parallel to the direction of ice flow; commonly consist of till, although some may contain stratified drift; may have a rock core. Includes slope lineated bogs (Ol).   |
| p      | plain                   | A comparatively flat level, or slightly undulating tract of land; materials are either till, glaciofluvial, alluvial, marine, lacustrine or organic sediments; bedrock features are commonly masked by the overlying sediments.   |
| r      | ridge                   | Narrow, elongated and commonly steep-sided feature that rises above the surrounding terrain; materials are either rock, till, glaciofluvial, fluvial, marine, lacustrine, aeolian, or organic sediments. Includes string bogs (Ov).   |
| t      | terrace                 | Long, narrow, level or gently inclined step-like surface, bounded along one edge by a steeper descending slope or scarp and along the other by a steeper ascending slope or scarp; materials are either till, glaciofluvial, fluvial or lacustrine sediments; generally formed by fluvial and glaciofluvial erosion or marine wave action.  |
| v      | veneer                  | Any deposit less than 1.5 m thick; morphology of the underlying unit is evident.  |
| w      | weathered               | A thin layer, generally less than 1 m thick, of frost-heaved and frost-shattered bedrock fragments.   |
| x      | complex                 | Commonly used to indicate numerous esker ridges that are closely spaced; can be used where any genetic category exhibits numerous surface expressions in a small area, and in which no single element can be defined at this scale.   |



**SURFICIAL GEOLOGY  
CODROY MAP SHEET  
(NTS 110/14)**

MAP 2009-89

**SYMBOLS**

|  |       |  |       |
|--|-------|--|-------|
| Geological boundary                              | ..... | Drumlin (direction known, unknown)                                   | ..... |
| Scarp face at edge of terrace                    | ..... | Crag-and-tail hill   | ..... |
| Cirque   | ..... | Till ramp  | ..... |
| Esker (flow direction known or assumed, unknown) | ..... | Fluting  | ..... |
| Melwater channel (small, large)                  | ..... | Röche moutonnée  | ..... |
| Crestline of major moraine ridge                 | ..... | Striation (direction known, unknown) (numbers indicate relative age) | ..... |
| Trend of ribbed or minor moraine ridges          | ..... | Avalanche track  | ..... |
| Beach ridges                                     | ..... | Kettle hole (small, large)   | ..... |
| Crevasse fill ridge                              | ..... | Sinkhole (small, large)  | ..... |
| Sand dunes                                       | ..... | Observation site   | ..... |
|  |       | Delta  | ..... |
|  |       | Radiocarbon date   | ..... |

Note: All symbols and classifications may not occur on this map. Elevation in feet above mean sea level. Contour interval 50 feet.  
Geology by F.T. Kirby, R.J. Ricketts, and D.G. Vandevier.  
GIS / digital cartography by T.J. Sears.

Digital elevation data supplied by the Shuttle Radar Topography Mission (SRTM), a partnership between NASA and the National Geospatial-Intelligence Agency (NGA). Flown aboard the NASA Space Shuttle Endeavour (1 - 22 February 2000). Additional information available from: <http://edc.usgs.gov/products/elevation/srtm/>

The age dates and glacial striations where included on this map, have been obtained from Taylor (2001a, b).  
Copies of this map may be obtained from the Geoscience Publications and Information Section, Geological Survey, Department of Natural Resources, P.O. Box 8700, St. John's, N.L., Canada, A1B 4J6.  
Department: <http://www.nr.gov.nl.ca/nr/>  
Geological Survey: <http://www.nr.gov.nl.ca/nr/mines/geoscience/>  
e-mail: [pub@go.nr.ca](mailto:pub@go.nr.ca)

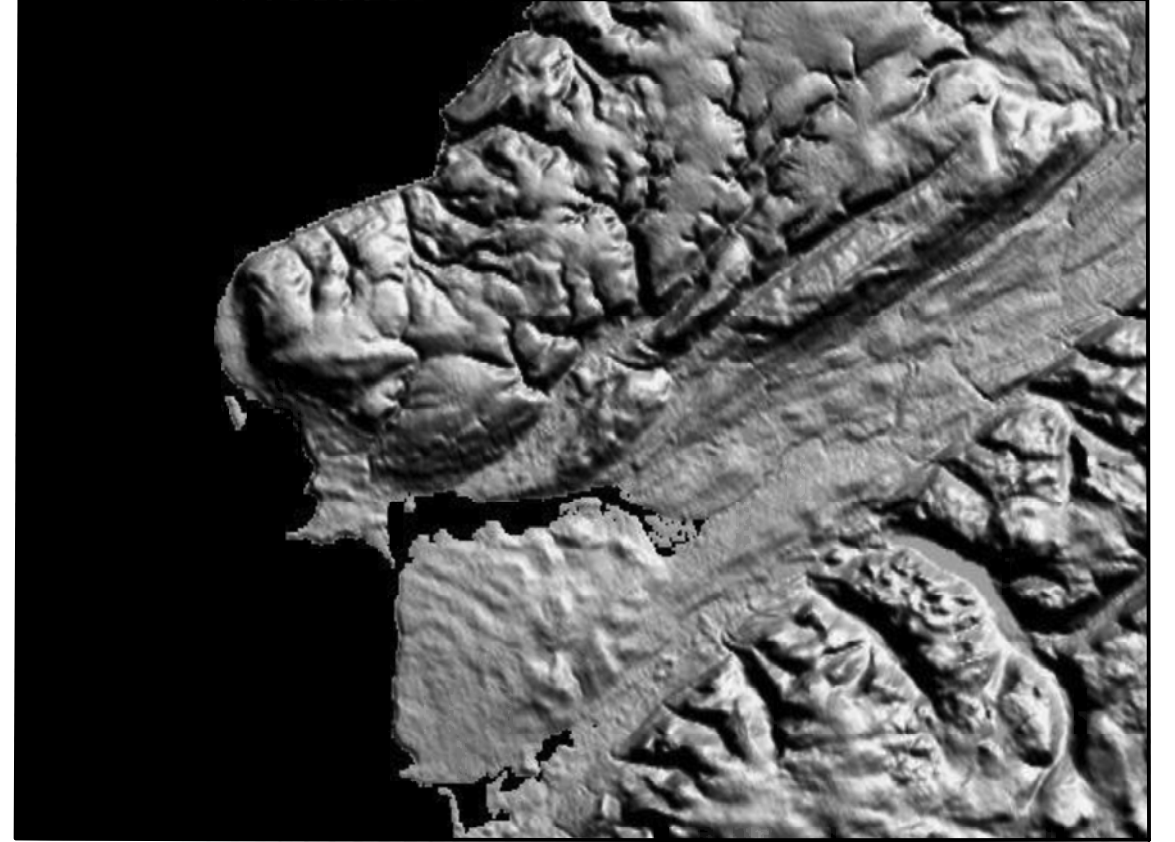
OPEN FILE 0110/14/0405  
This map supersedes Map 88-172, Open File NFDL1693  
PUBLISHED 2009

**References**  
Taylor, D.M. 2001a: Carbon-14 data list for Newfoundland and Labrador. Geological Survey, Department of Natural Resources, Open File NFDL2190, version 2. (<http://gis.geosur.gov.nl.ca/>)  
Taylor, D.M. 2001b: Newfoundland and Labrador Striation Database, Version 4. Newfoundland and Labrador Department of Natural Resources, Geological Survey, Open File NFDL2195. (<http://gis.geosur.gov.nl.ca/>)

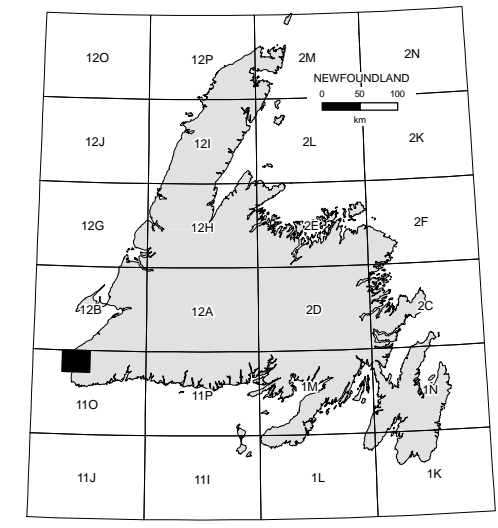
**Recommended citation**  
Kirby, F.T., Ricketts, R.J. and Vandevier, D.G. 2009 Surficial Geology of the Codroy map sheet (NTS 110/14). Geological Survey, Department of Natural Resources, Government of Newfoundland and Labrador; Map 2009-89, Open File 0110/14/0405.

**Note**  
Open File reports and maps issued by the Geological Survey Division of the Newfoundland and Labrador Department of Natural Resources are made available for public use without being formally edited or peer reviewed. They are based upon preliminary data and evaluation. The purchaser agrees not to provide a digital reproduction or copy of this product to a third party. Derivative products should acknowledge the source of the data.

**Disclaimer**  
The Geological Survey, a division of the Newfoundland and Labrador Department of Natural Resources (the "authors and publishers"), retains the sole right to the original data and information found in any product produced. The authors and publishers assume no legal liability or responsibility for any alterations, changes or misrepresentations made by third parties with respect to these products or the original data. Furthermore, the Geological Survey assumes no liability with respect to digital reproductions or copies of original products or for derivative products made by third parties. Please consult with the Geological Survey to ensure originality and correctness of data and/or products.



Digital elevation model (DEM) from Shuttle Radar Topography Mission (SRTM) data of the Codroy map area (shaded from the northeast). The image provides additional surface information not readily illustrated on the surficial map. Terrain variability is evident, with areas of bedrock highlighted as higher, rougher textured areas (consistent with the surficial map), and areas of thicker till shown as smoother textured areas.



INDEX MAP