

Canada Lynx

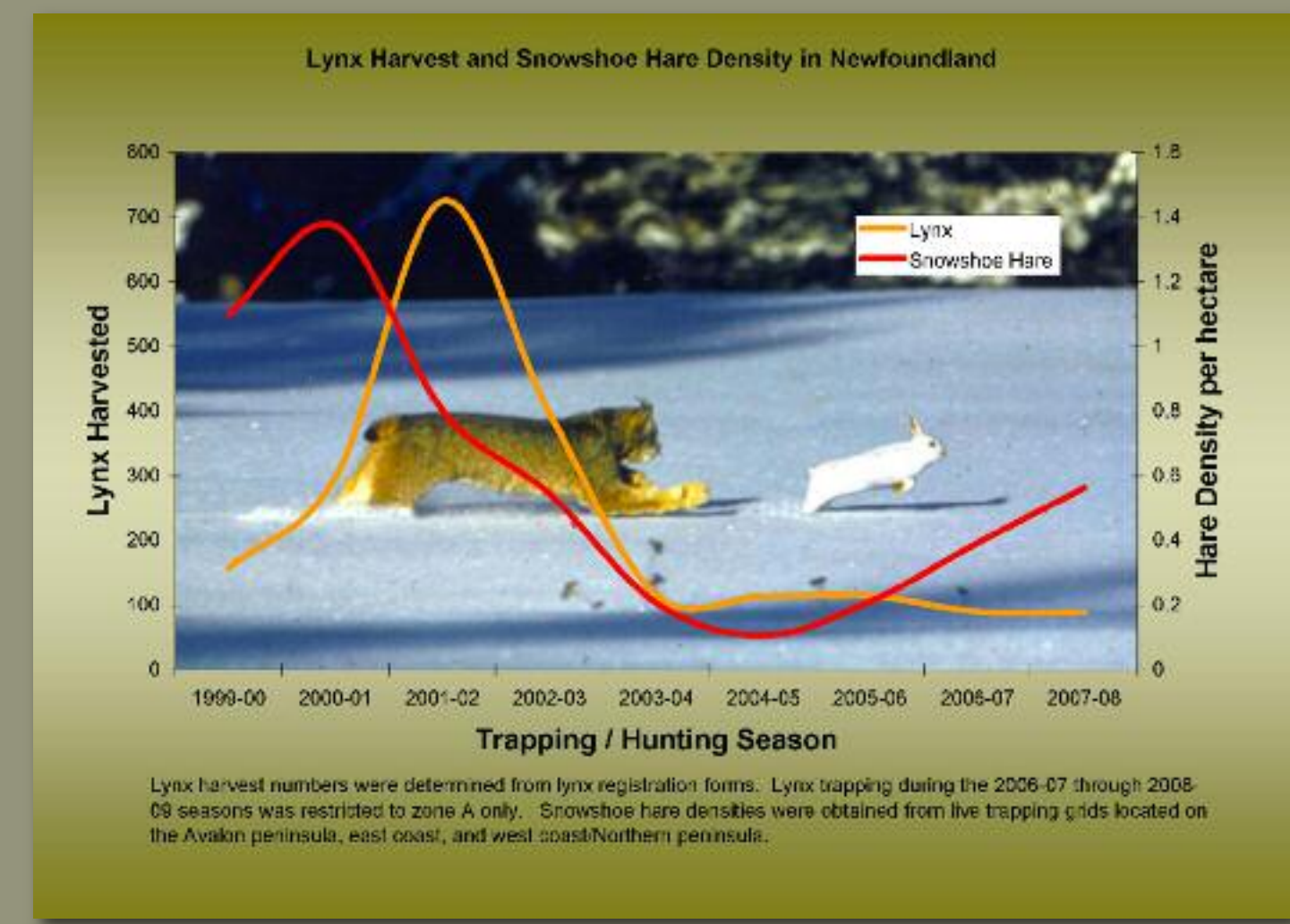
Lynx canadensis

Photo: Mike McGrath

Reclusive lynx follows snowshoe hares' trail

The Canada Lynx (*Lynx canadensis*) is a native felid of Newfoundland & Labrador's boreal forests. Insular Newfoundland lynx are considered by some to be a unique subspecies based on their small size, darker pelage (fur), and possible cranial differences.

The lynx is a highly specialized predator, relying on snowshoe hare (*Lepus americanus*) as its main source of food. Snowshoe hares were introduced to insular Newfoundland between 1864 and 1876. Prior to the introduction, lynx were extremely scarce on the Island.



shows that lynx eat red squirrels, voles, shrews, caribou, birds, fish, and plants.

A wealth of information from hunters and trappers

In order to monitor lynx populations, successful hunters and trappers are required to submit lynx carcasses to the Wildlife Division for analysis. This provides biological and ecological data that enables us to:

- track harvest trends to provide an index of abundance
- determine age distributions by analyzing teeth
- estimate lynx reproduction using placental scar counts
- determine food habits by analyzing stomach contents
- assess the physical condition and health of the animals

This research helps the Wildlife Division develop management strategies that ensure sustainable lynx populations in Newfoundland and Labrador.

For more information, visit www.env.gov.nl.ca/env/wildlife or call (709) 637-2025

Department of Environment & Conservation

Wildlife Division



Photo: Gerry Verman

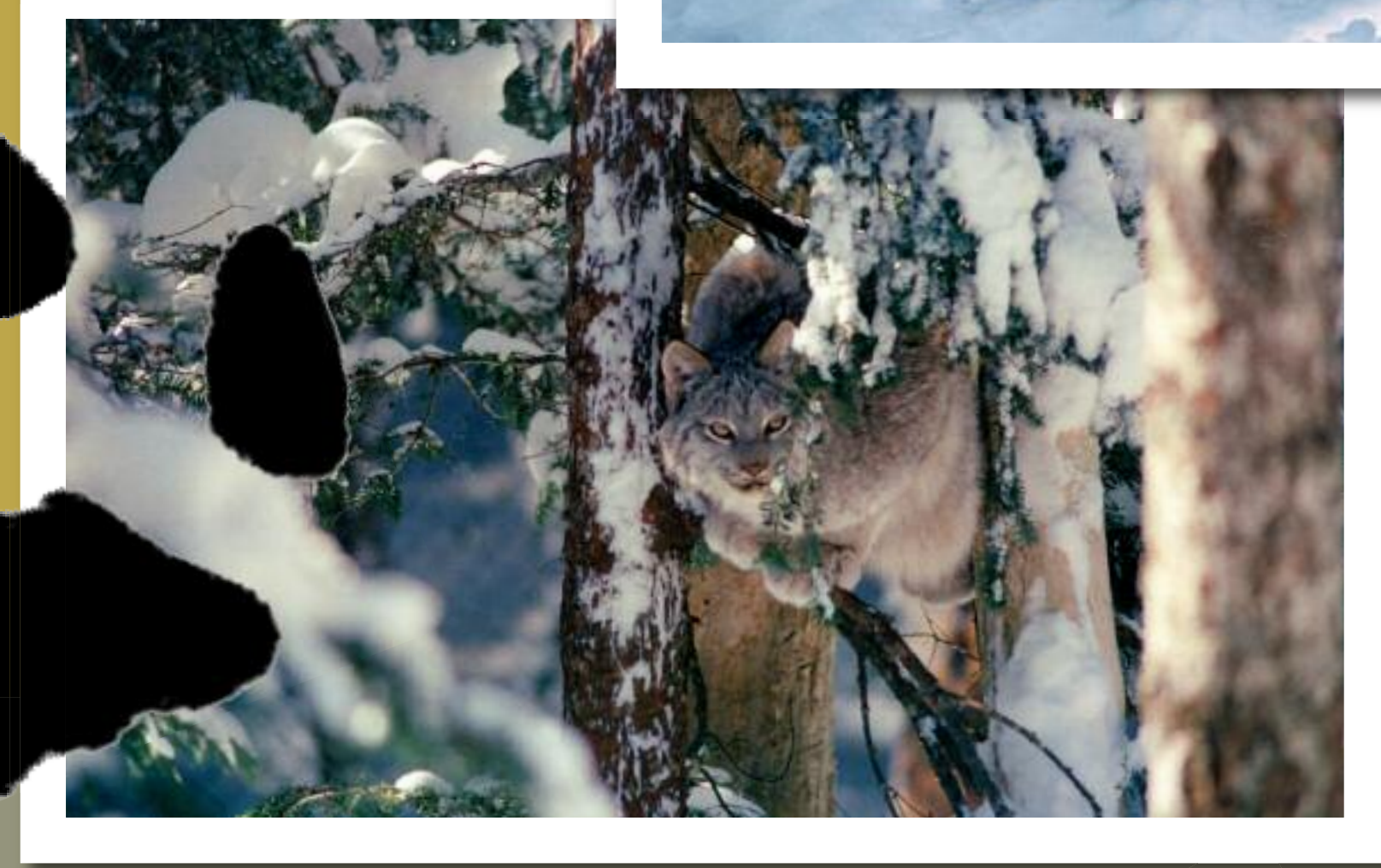


Photo: Gerry Verman

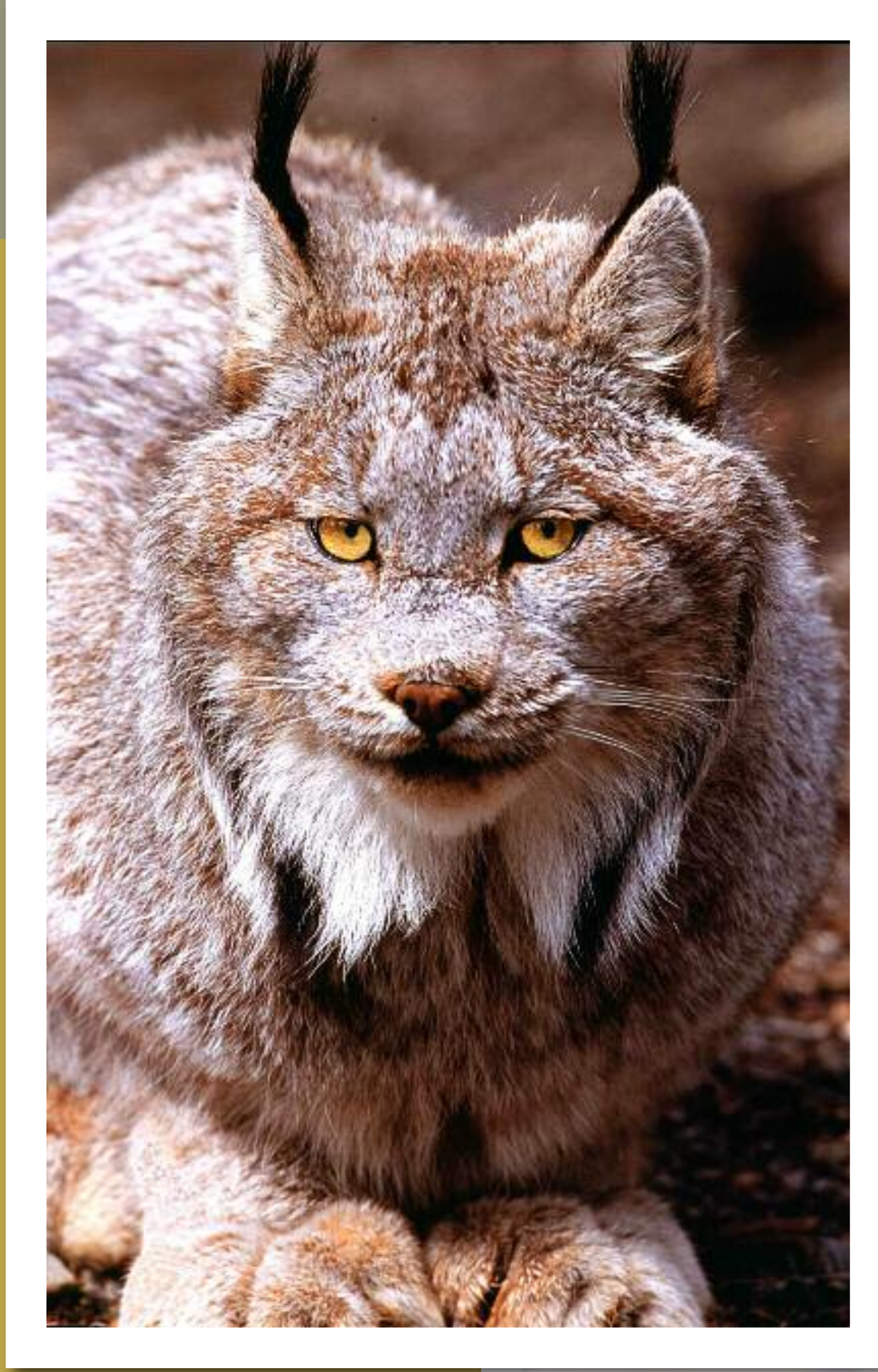


Photo: Mike McGrath

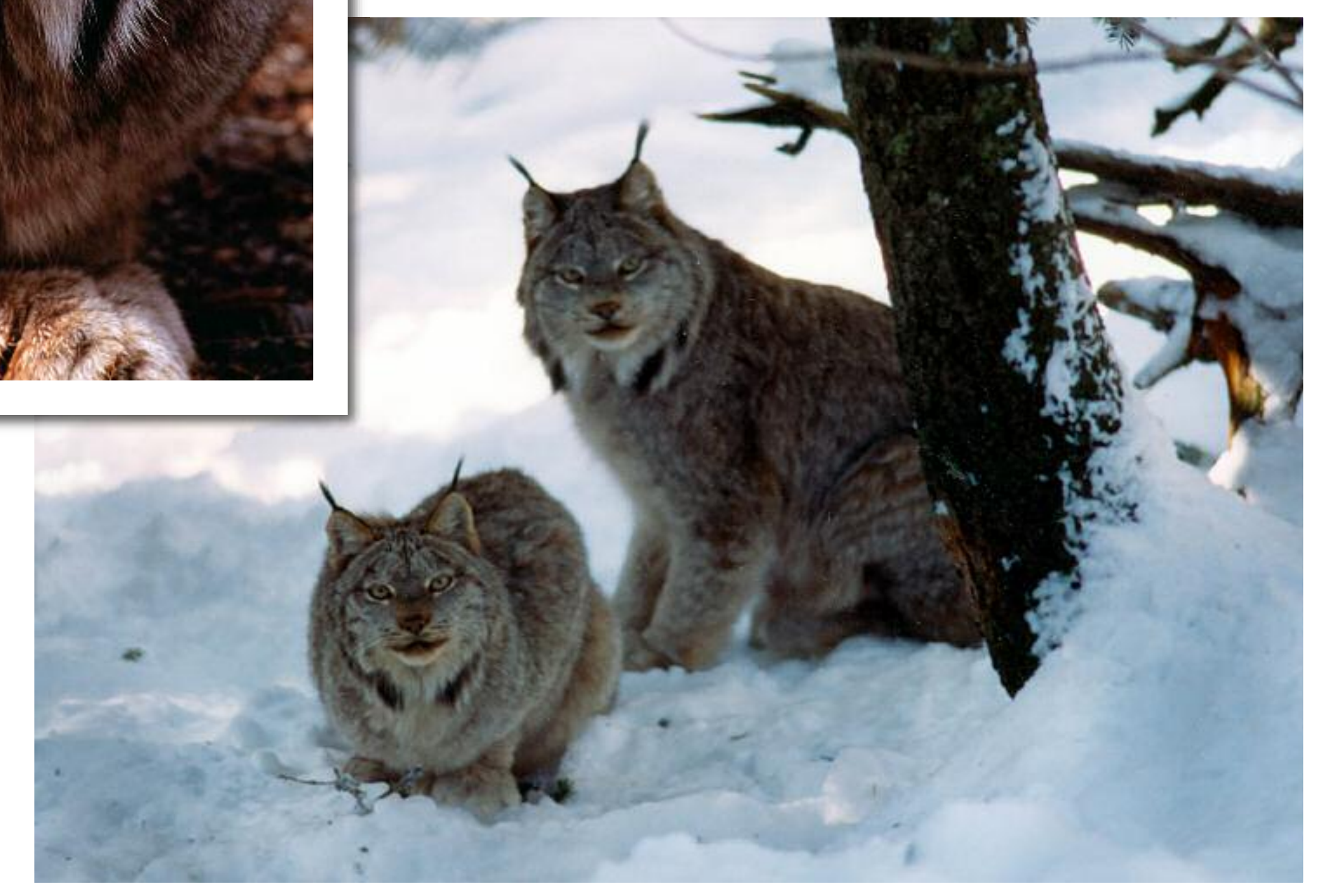


Photo: Gerry Verman