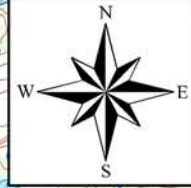
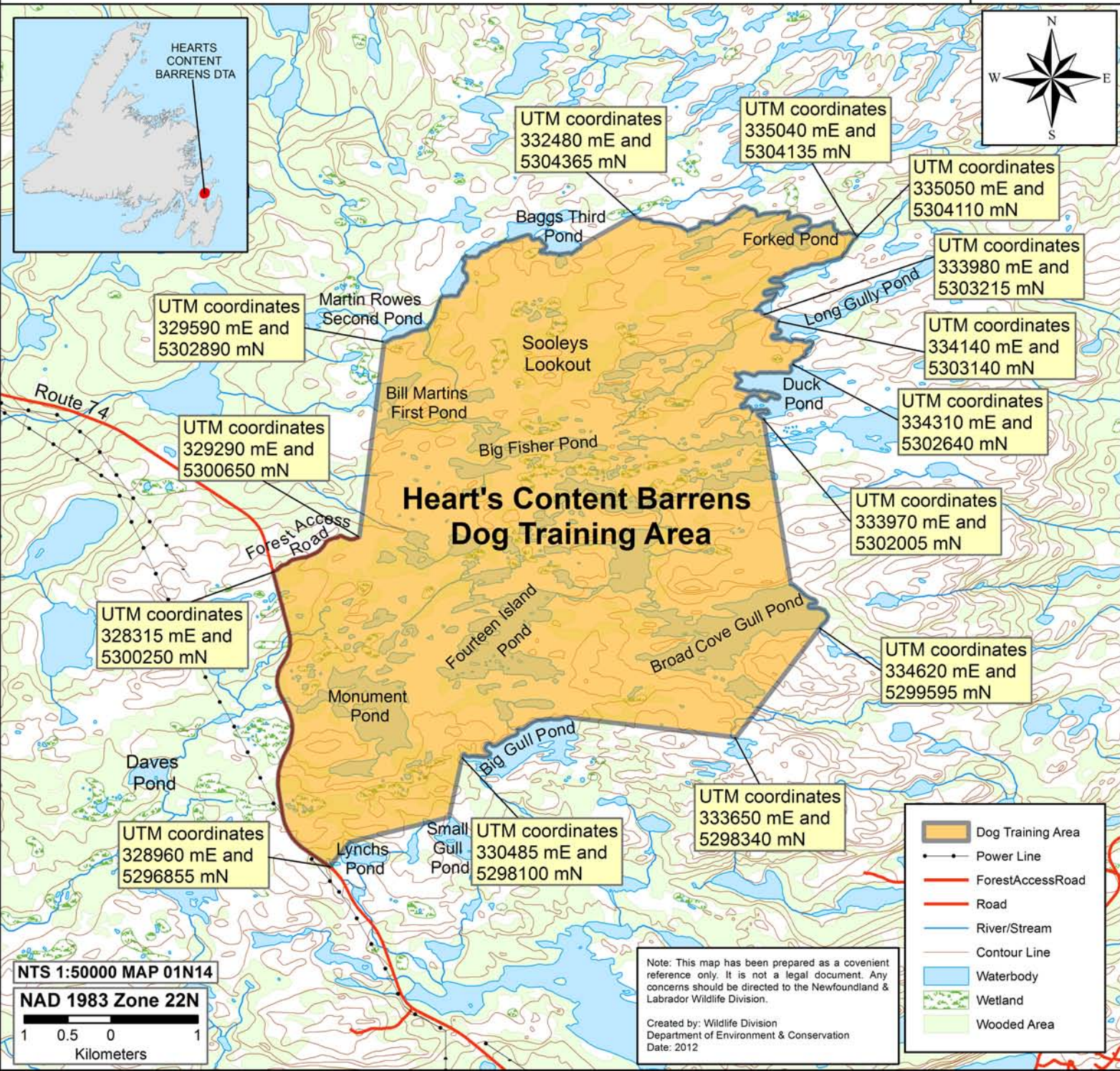


All that area of the Island of Newfoundland bounded by a line beginning at UTM coordinates 328960 meters east and 5296855 meters north on Route 74; then following a straight line in a generally northeasterly direction to the northern extremity of Lynchs Pond; then following a straight line in a generally northeasterly direction to the northern extremity of Small Gull Pond; then following a straight line in a generally northeasterly direction to its northeastern extremity; then following a straight line in a generally easterly by southeasterly direction to the northern extremity of an unnamed pond at UTM coordinates 333650 meters east and 5298340 meters north; then following a straight line in a generally northeasterly direction to the western extremity of Big Gull Pond at UTM coordinates 330485 meters east and 5298100 meters north; then following the northern shoreline of Big Gull Pond in a generally northeasterly direction to its northeastern extremity; then following a straight line in a generally easterly by southeasterly direction to the northern extremity of an unnamed pond at UTM coordinates 333650 meters east and 5298340 meters north; then following a straight line in a generally northerly by northwesterly direction to the southern extremity of Duck Pond at UTM coordinates 333970 meters east and 5302005 meters north; then following the western shoreline of Duck Pond in a generally northerly direction to the mouth of an unnamed stream at UTM coordinates 334310 meters east and 5302640 meters north; then following the western bank of the unnamed stream and its two interconnected ponds in a generally northwesterly direction to Long Gully Pond; then following the southern, then western shoreline of Long Gully Pond in a generally westerly, then northerly direction to UTM coordinates 334140 meters east and 5303140 meters north; then following a straight line in a generally northwesterly direction to the southern extremity of an unnamed pond at UTM coordinates 333980 meters east and 5303215 meters north; then following the northwestern shorelines and adjoining tributaries of the unnamed ponds in a generally northeasterly direction to the southern extremity of an unnamed pond at UTM coordinates 335050 meters east and 5304110 meters north; then following the western shoreline of said pond in a generally northwesterly direction to the mouth of an unnamed stream at UTM coordinates 335040 meters east and 5304135 meters north; then following the north bank of the unnamed stream in a generally westerly direction to Forked Pond; then following the northern shorelines of Forked Pond and the following three ponds and adjoining tributaries in a generally westerly direction to an unnamed pond at UTM coordinates 332480 meters east and 5304365 meters north; then following a straight line in a generally southwestwesterly direction to the eastern extremity of Baggs Third Pond; then following the southern shoreline of Baggs Third Pond and the following four ponds and adjoining tributaries in a generally southwestwesterly direction to the southern extremity of Martin Rows Second Pond at UTM coordinates 329590 meters east and 5302890 meters north; then following a straight line in a generally southerly direction to a forest access road at UTM coordinates 329290 meters east and 5300650 meters north; then following the forest access road in a generally southwestwesterly direction to its intersection with Route 74 at UTM coordinates 328315 meters east and 5300250 meters north; then following Route 74 in a generally southerly direction to the point of commencement.



# Heart's Content Barrens Dog Training Area (DTA)



NTS 1:50000 MAP 01N14  
 NAD 1983 Zone 22N  
 1 0.5 0 1  
 Kilometers

Note: This map has been prepared as a convenient reference only. It is not a legal document. Any concerns should be directed to the Newfoundland & Labrador Wildlife Division.  
 Created by: Wildlife Division  
 Department of Environment & Conservation  
 Date: 2012