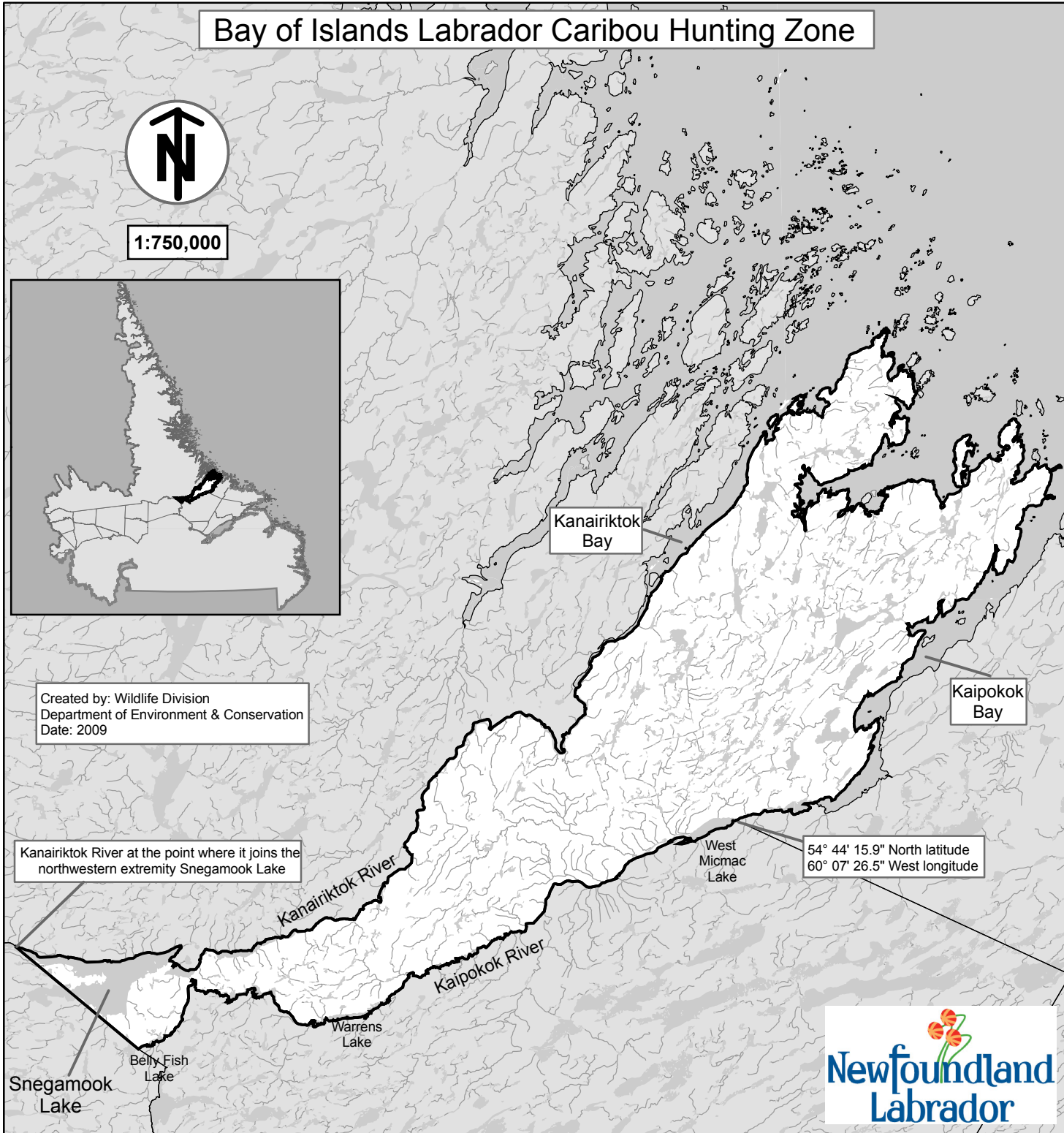


Bay of Islands Labrador Caribou Hunting Zone

Bay of Islands Description

All that area of Labrador commencing at the eastern extremity of West Micmac Lake located at 54° 44' 15.9" North latitude and 60° 07' 26.5" West longitude; then following the southern shoreline of Kaipokok River in a westerly direction to Warrens Lake; then following the south shoreline of Warrens Lake in westerly direction to Kaipokok River; then following the southern bank of Kaipokok River in a westerly direction to its headwaters; then following the south shoreline of a string of lakes to the eastern extremity of Belly Fish Lake; then following a straight line in a generally northwesterly direction to the Kanairiktok River at the point where it joins the northwestern extremity of Snegamook Lake; then following the northern shoreline of Snegamook Lake in an easterly direction to Kanairiktok River; then following the north bank of the Kanairiktok River in a generally northeasterly direction to Kanairiktok Bay; then following the southeastern coastline of Kanairiktok Bay; then following the coastline of the Bay of Islands and the northwestern coastline of Kaipokok Bay to the mouth of the Kaipokok River; then following the southern bank of the Kaipokok River in a westerly direction to East Micmac Lake; then following the southern shoreline of the East Micmac Lake in a westerly direction to Kaipokok River; then following the southern bank of the Kaipokok River to West Micmac Lake and the point of commencement.



Created by: Wildlife Division
 Department of Environment & Conservation
 Date: 2009

Kanairiktok River at the point where it joins the northwestern extremity Snegamook Lake

54° 44' 15.9" North latitude
 60° 07' 26.5" West longitude

The following maps are crossed by the outline of the Bay of Islands Caribou Hunting Zone.

National Topographic Series Map
 250,000 Reference List:
 013j, 013k, 013n, 013o



Note: This map has been prepared as a convenient reference only. It is not a legal document. The Wildlife Act and Regulations and the Annual Hunting Orders published therein should be consulted for all purposes of interpreting and applying the law. Contact the Newfoundland & Labrador Wildlife Division.