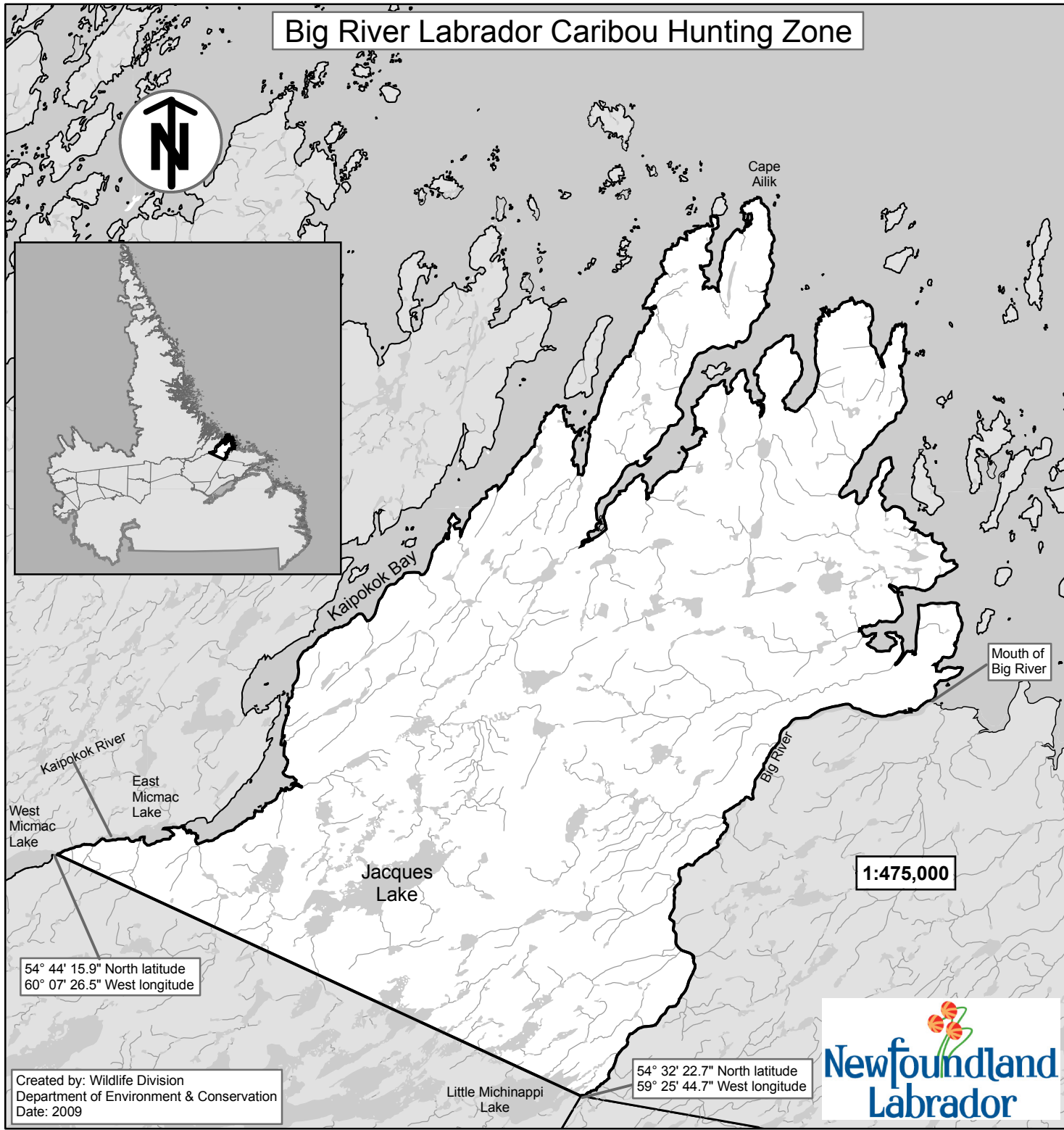


Big River Labrador Caribou Hunting Zone



Big River Description

All that area of Labrador commencing at the eastern extremity of West Micmac Lake located at 54° 44' 15.9" North latitude and 60° 07' 26.5" West longitude; then following the southern bank of Kaipokok River and the southern shoreline of East Micmac Lake in a generally easterly direction to Kaipokok Bay; then following the southern shoreline of Kaipokok Bay to Cape Ailik; then following the coastline of the Labrador Sea in a generally southeasterly direction to the mouth of Big River; then following the northwestern bank of Big River in a southwesterly direction to its confluence with a tributary flowing from the eastern extremity of Little Michinappi Lake located at 54° 32' 22.7" North latitude and 59° 25' 44.7" West longitude; then following a straight line in a generally northwesterly direction to the western extremity of West Micmac Lake, the point of commencement.

The following maps are crossed by the outline of the Big River Caribou Hunting Zone.
National Topographic Series Map
250,000 Reference List:
013j, 013k, 013o

Created by: Wildlife Division
Department of Environment & Conservation
Date: 2009



Note: This map has been prepared as a convenient reference only. It is not a legal document. The Wildlife Act and Regulations and the Annual Hunting Orders published therein should be consulted for all purposes of interpreting and applying the law. Contact the Newfoundland & Labrador Wildlife Division.