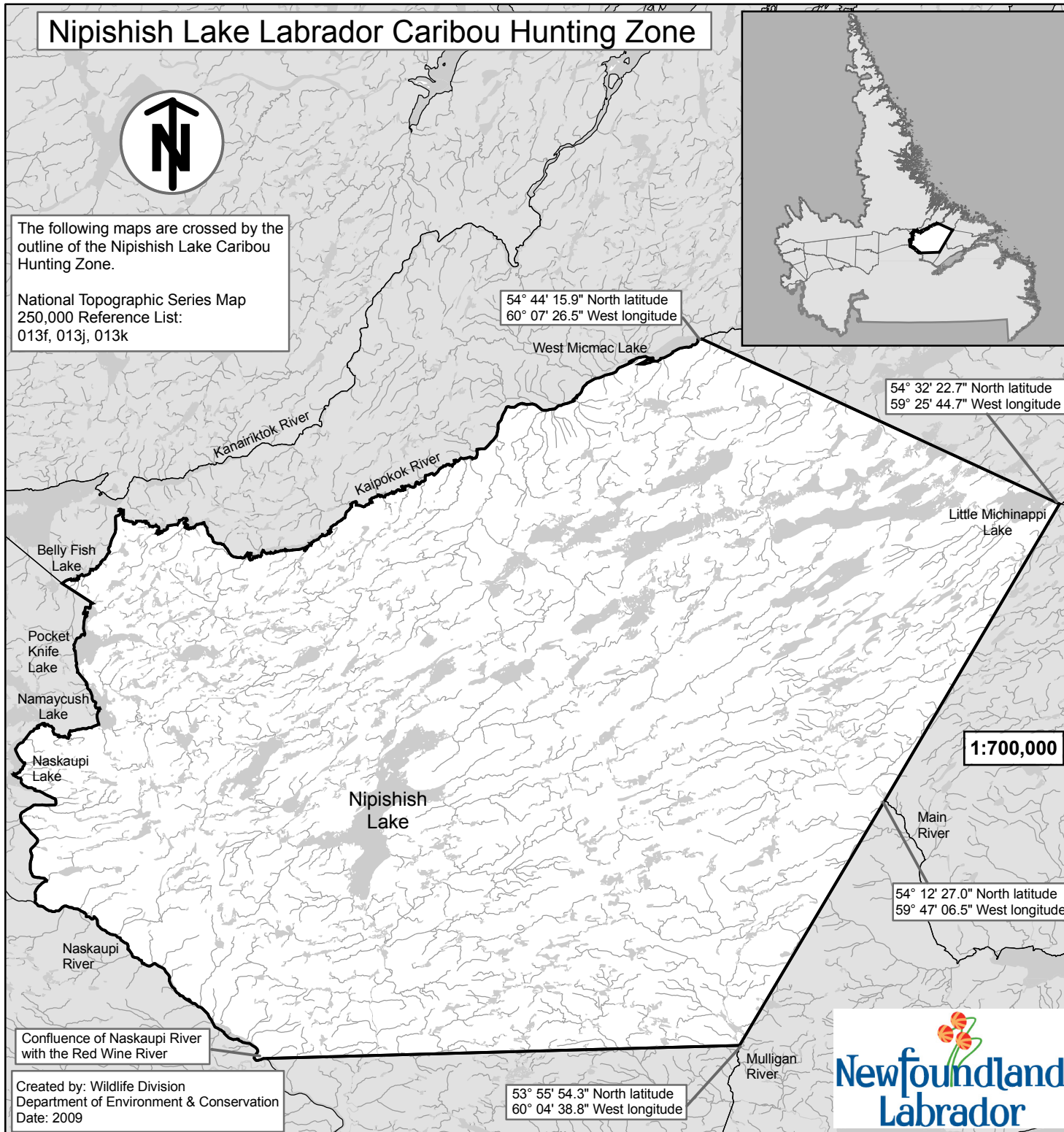


Nipishish Lake Labrador Caribou Hunting Zone



The following maps are crossed by the outline of the Nipishish Lake Caribou Hunting Zone.

National Topographic Series Map
250,000 Reference List:
013f, 013j, 013k



54° 44' 15.9" North latitude
60° 07' 26.5" West longitude

54° 32' 22.7" North latitude
59° 25' 44.7" West longitude

1:700,000

54° 12' 27.0" North latitude
59° 47' 06.5" West longitude

53° 55' 54.3" North latitude
60° 04' 38.8" West longitude

Confluence of Naskaupi River
with the Red Wine River

Created by: Wildlife Division
Department of Environment & Conservation
Date: 2009

Nipishish Lake Description

All that area of Labrador commencing at the eastern extremity of West Micmac Lake located at 54° 44' 15.9" North latitude and 60° 07' 26.5" West longitude; then following a straight line in a southeasterly direction to the confluence of Big River and a tributary flowing from the eastern extremity of Little Michinappi Lake located at 54° 32' 22.7" North latitude and 59° 25' 44.7" West longitude; then following a straight line in a generally southwesterly direction to its intersection with Main River located at 54° 12' 27.0" North latitude and 59° 47' 06.5" West longitude; then following a straight line in a southwesterly direction to the outflow of Mulligan River from the southern extremity of an unnamed lake at 53° 55' 54.3" North latitude and 60° 04' 38.8" West longitude; then following a straight line in a generally westerly direction to the confluence of the Naskaupi River and Red Wine River; then following the western bank of the Naskaupi River to Naskaupi Lake; then following the eastern shoreline of Naskaupi Lake in a generally northerly direction to The Narrows; then following the unnamed river draining Namaycush Lake to said lake; then following the western shore of Namaycush Lake to its northern extremity; then following a straight line in a generally northerly direction to the southern extremity of Pocket Knife Lake; then following the western shore of Pocket Knife Lake to its northern extremity; then following a straight line in a generally northwesterly direction to the eastern extremity of Belly Fish Lake; then following the southern shorelines of the string of unnamed lakes in a generally northeasterly direction to the headwaters of the Kaipokok River; then following the southern shoreline of the Kaipokok River in a generally northeasterly direction to the point of commencement.



Note: This map has been prepared as a convenient reference only. It is not a legal document. The Wildlife Act and Regulations and the Annual Hunting Orders published therein should be consulted for all purposes of interpreting and applying the law. Contact the Newfoundland & Labrador Wildlife Division.