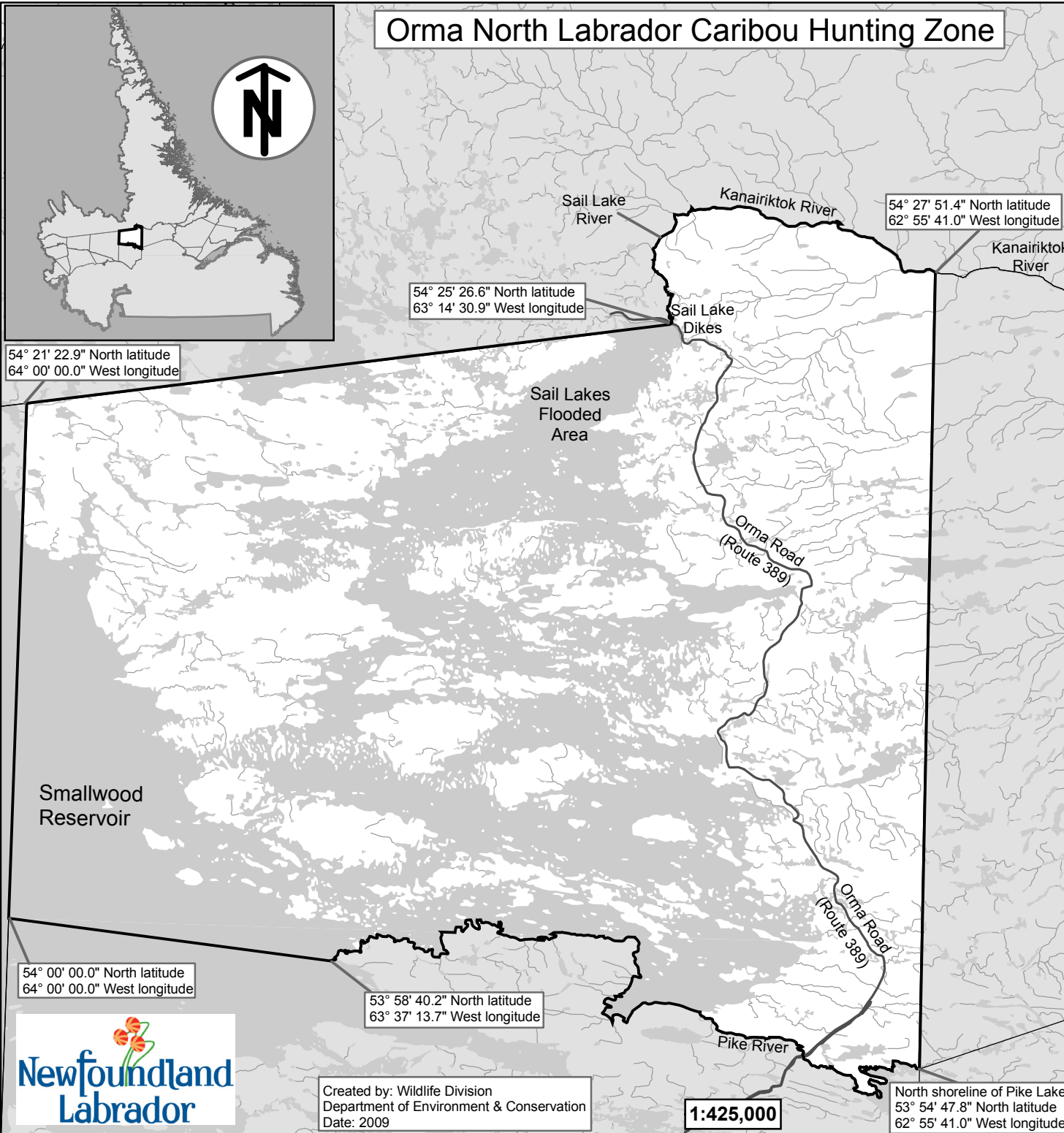


# Orma North Labrador Caribou Hunting Zone



## Orma North Description

All that area of Labrador commencing where the Smallwood Reservoir intersects the Sail Lake Dikes located at 54° 25' 26.6" North latitude and 63° 14' 30.9" West longitude; then following the Sail Lake River in a northerly direction to the Kanairiktok River; then following the north bank of the Kanairiktok River to its intersection with 62° 55' 41.0" West longitude; then following that longitude due south to its intersection with the north shoreline of Pike Lake located at 53° 54' 47.8" North latitude and 62° 55' 41.0" West longitude; then following the north shoreline of Pike Lake in a northwesterly direction to its confluence with the Pike River; then following the north bank of Pike River west to its confluence with the Smallwood Reservoir; then following the south shoreline of Smallwood Reservoir in a westerly direction to a point of land located at 53° 58' 40.2" North latitude and 63° 37' 13.7" West longitude; then following a straight line in a northwesterly direction to a point located at 54° 00' 00.0" North latitude and 64° 00' 00.0" West longitude; then following 64° 00' 00.0" West longitude due north to its intersection with 54° 21' 22.9" North latitude; then following a straight line in a northeasterly direction to the point of commencement.

The following maps are crossed by the outline of the Orma North Caribou Hunting Zone.

National Topographic Series Map  
250,000 Reference List:  
013E, 013L

Note: This map has been prepared as a convenient reference only. It is not a legal document. The Wildlife Act and Regulations and the Annual Hunting Orders published therein should be consulted for all purposes of interpreting and applying the law. Contact the Newfoundland & Labrador Wildlife Division.

Created by: Wildlife Division  
Department of Environment & Conservation  
Date: 2009

1:425,000

