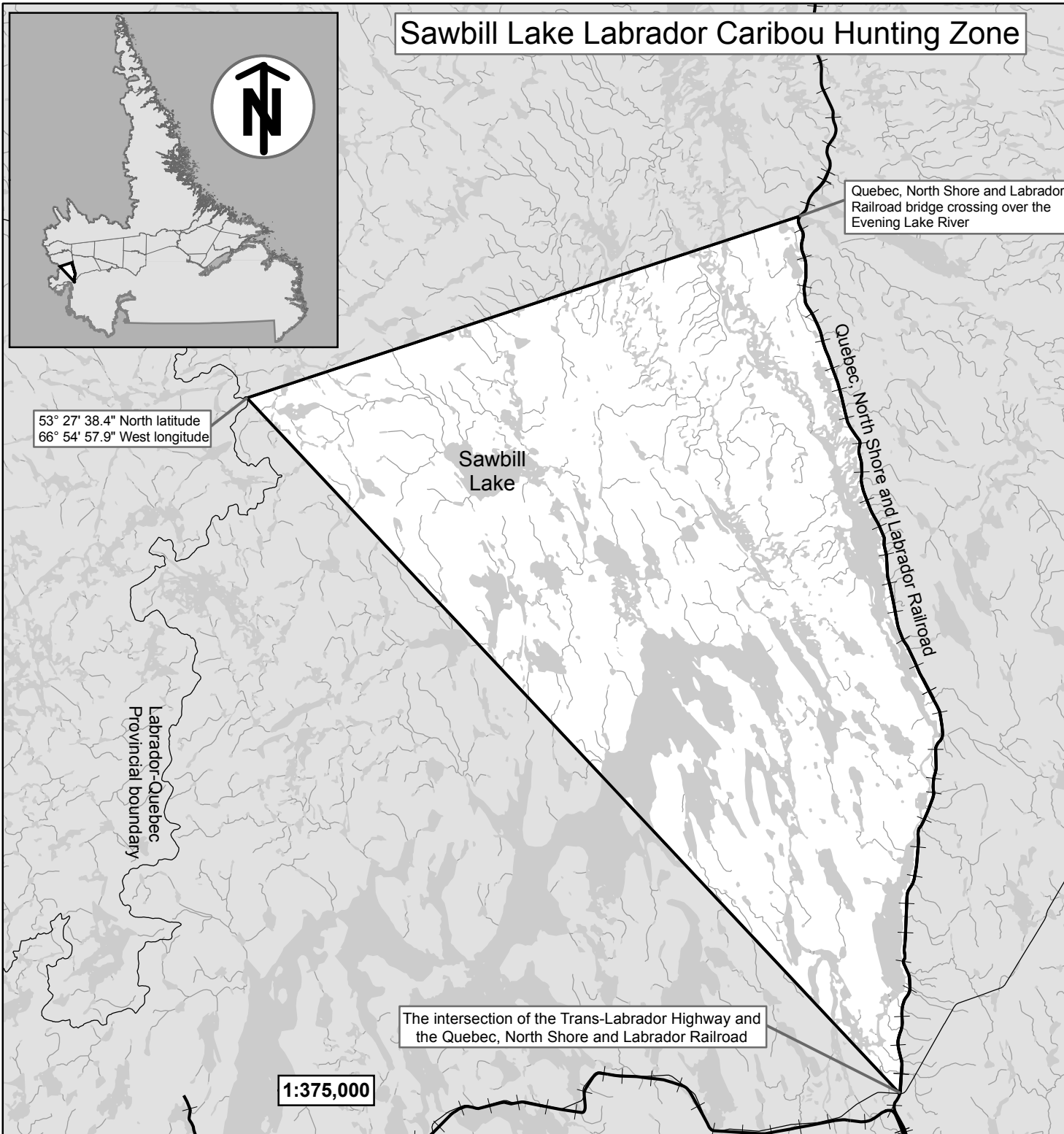


Sawbill Lake Labrador Caribou Hunting Zone

Sawbill Lake Description

All that area of Labrador bounded by a line commencing at the intersection of the Trans-Labrador Highway and the Quebec, North Shore and Labrador Railroad; then following the Quebec, North Shore and Labrador Railroad in a northerly direction to the railroad bridge crossing over the Evening Lake River near the Sawbill Railroad Siding; then following a straight line in a southwesterly direction to $53^{\circ} 27' 38.4''$ North latitude and $66^{\circ} 54' 57.9''$ West longitude on the Labrador-Quebec boundary; then following a straight line in a southeasterly direction to the point of commencement.



The following maps are crossed by the outline of the Sawbill Lake Caribou Hunting Zone.

National Topographic Series Map
250,000 Reference List:
023g

Created by: Wildlife Division
Department of Environment & Conservation
Date: 2009



Note: This map has been prepared as a convenient reference only. It is not a legal document. The Wildlife Act and Regulations and the Annual Hunting Orders published therein should be consulted for all purposes of interpreting and applying the law. Contact the Newfoundland & Labrador Wildlife Division.