



# The Newfoundland and Labrador Gazette

PART I  
PUBLISHED BY AUTHORITY

Vol. 101

ST. JOHN'S, FRIDAY, MAY 15, 2026

No. 20

## MINERAL ACT

### NOTICE

Published in accordance with section 62 of CNLR 1143/96 under the *Mineral Act*, RSNL1990 cM-12 as amended.

Mineral rights to the following mineral licenses have reverted to the Crown:

Mineral Licence held by on map sheet	038380M Hicks, Darrin 11O/14
A portion of licence held by on map sheet more particularly described in an application on file at Dept. of Energy and Mines	035938M Aurora Energy Ltd. 13J/12
A portion of licence held by on map sheet more particularly described in an application on file at Dept. of Energy and Mines	035939M Aurora Energy Ltd. 13J/12

A portion of licence held by on map sheet more particularly described in an application on file at Dept. of Energy and Mines	035942M Aurora Energy Ltd. 13J/12
--	---

A portion of licence held by on map sheet more particularly described in an application on file at Dept. of Energy and Mines	035944M Aurora Energy Ltd. 13J/12
--	---

A portion of licence held by on map sheet more particularly described in an application on file at Dept. of Energy and Mines	035951M Aurora Energy Ltd. 13J/12
--	---

A portion of licence held by on map sheet more particularly described in an application on file at Dept. of Energy and Mines	035959M Aurora Energy Ltd. 13J/12
--	---

A portion of licence held by on map sheet more particularly described in an application on file at Dept. of Energy and Mines	035953M Aurora Energy Ltd. 13J/12, 13J/13	Mineral Licence held by on map sheet	038541M Fraser, Dean 01M/10
Mineral Licence held by on map sheet	035947M Aurora Energy Ltd. 13J/13, 13J/14	Mineral Licence held by on map sheet	025915M Squires, Stanley H.B. 12H/16
A portion of licence held by on map sheet more particularly described in an application on file at Dept. of Energy and Mines	025621M Aurora Energy Ltd. 13J/12	A portion of licence held by on map sheet more particularly described in an application on file at Dept. of Energy and Mines	036139M Zonte Metals Inc. 01M/15
A portion of licence held by on map sheet more particularly described in an application on file at Dept. of Energy and Mines	025681M Aurora Energy Ltd. 13K/09	Mineral Licence held by on map sheet	026417M RDF Consulting Ltd. 02D/12
A portion of licence held by on map sheet more particularly described in an application on file at Dept. of Energy and Mines	025676M Aurora Energy Ltd. 13J/12	Mineral Licence held by on map sheet	026584M New Rock Mining Inc. 02E/03
Mineral Licence held by on map sheet	025298M Alterra Resources Inc. 13L/02	Mineral Licence held by on map sheet	026588M New Rock Mining Inc. 02E/03
Mineral Licence held by on map sheet	038273M The Claim Group Incorporated 11O/14	Mineral Licence held by on map sheet	036834M Rogers, Nancy 02D/08
Mineral Licence held by on map sheet	019456M Big Land Exploration Ltd. 23G/09	Mineral Licence held by on map sheet	026670M Newfoundland Discovery Corp. 02D/11
Mineral Licence held by on map sheet	023779M Atlantic Minerals Limited 12B/08	Mineral Licence held by on map sheet	026673M Quest Inc. 02E/09
Mineral Licence held by on map sheet	023796M Ubique Minerals Ltd. 12I/06	Mineral Licence held by on map sheet	038675M Gander Gold Corp. 02D/11
A portion of licence held by on map sheet more particularly described in an application on file at Dept. of Energy and Mines	038785M Rogers, Larry 02D/07	Mineral Licence held by on map sheet	027558M Newfoundland Discovery Corp. 02D/11
Mineral Licence held by on map sheet	024870M Quest Inc. 12A/06	Mineral Licence held by on map sheet	027562M Simms, Herb 01N/06
		A portion of licence held by on map sheet more particularly described in an application on file at Dept. of Energy and Mines	039081M Stares, Robert T. 02E/01, 02E/02

A portion of licence held by on map sheet more particularly described in an application on file at Dept. of Energy and Mines	040122M Stares, Robert T. 02E/01, 02E/02	Mineral Licence held by on map sheet	031722M Hussey, Leo T. 02D/16
A portion of licence held by on map sheet more particularly described in an application on file at Dept. of Energy and Mines	040123M Stares, Robert T. 02E/01, 02E/02	Mineral Licence held by on map sheet	031723M Bradley, Angus 02E/01
A portion of licence held by on map sheet more particularly described in an application on file at Dept. of Energy and Mines	027579M Stares, Robert T. 02E/01	Mineral Licence held by on map sheet	037644M Canterra Minerals Corporation 12B/08
A portion of licence held by on map sheet more particularly described in an application on file at Dept. of Energy and Mines	040120M Stares, Robert T. 02E/01	Mineral Licence held by on map sheet	038663M Ryan, Shawn 02E/03, 02E/06
Mineral Licence held by on map sheet	031390M Unity Resources Inc. 02E/10	Mineral Licence held by on map sheet	038661M Ryan, Shawn 02E/06
Mineral Licence held by on map sheet	031391M Unity Resources Inc. 02E/07, 02E/10	Mineral Licence held by on map sheet	031762M Ryan, Shawn 02E/06
Mineral Licence held by on map sheet	031394M Unity Resources Inc. 02E/10	Mineral Licence held by on map sheet	031775M Simms, Herb 01N/07
Mineral Licence held by on map sheet	031673M Stephen Stockley Agriculture and Fabrication Inc. 02D/14	Mineral Licence held by on map sheet	031778M 86835 Newfoundland & Labrador Corp. 13M/16, 14D/01
Mineral Licence held by on map sheet	031674M Stephen Stockley Agriculture and Fabrication Inc. 02D/11	Mineral Licence held by on map sheet	031811M Lannon, George 01K/13
Mineral Licence held by on map sheet	031720M Edmunds, Ricky 13O/06	Mineral Licence held by on map sheet	038700M Vulcan Minerals Inc. 01M/13
Mineral Licence held by on map sheet	031721M Edmunds, Ricky 13J/13	Mineral Licence held by on map sheet	031860M Stockley, Mark 02E/07
		Mineral Licence held by on map sheet	031862M Golden Planet Mining Corp. 12H/02
		Mineral Licence held by on map sheet	031864M Golden Planet Mining Corp. 12I/01

Mineral Licence held by on map sheet	031940M Kelloway, Keith 01M/07, 01M/06	Mineral Licence held by on map sheet	032011M Stockley, William 14D/08
Mineral Licence held by on map sheet	031951M Burton, Noelle 02E/13	Mineral Licence held by on map sheet	032023M Infinico Metals Corp. 01M/16
Mineral Licence held by on map sheet	031952M Burton, Noelle 02E/13	A portion of licence held by on map sheet	032030M Quest Inc. 01N/12
A portion of licence held by on map sheet more particularly described in an application on file at Dept. of Energy and Mines	038851M Benton Resources Inc. 02D/07	more particularly described in an application on file at Dept. of Energy and Mines	
Mineral Licence held by on map sheet	031972M Noseworthy, Mike 02E/10	A portion of licence held by on map sheet more particularly described in an application on file at Dept. of Energy and Mines	037661M Quest Inc. 01N/13
Mineral Licence held by on map sheet	031981M Noseworthy, Mike 02E/10	Mineral Licence held by on map sheet	032048M KING, ROGER 02E/09
Mineral Licence held by on map sheet	031982M Noseworthy, Mike 02E/10	Mineral Licence held by on map sheet	032049M Newfoundland Discovery Corp. 02E/01
Mineral Licence held by on map sheet	031983M Noseworthy, Mike 02E/10	Mineral Licence held by on map sheet	032050M Newfoundland Discovery Corp. 02E/01
Mineral Licence held by on map sheet	031991M Stephen Stockley Agriculture and Fabrication Inc. 13L/05	A portion of licence held by on map sheet more particularly described in an application on file at Dept. of Energy and Mines	037779M Quest Inc. 12A/14
Mineral Licence held by on map sheet	031993M Stephen Stockley Agriculture and Fabrication Inc. 13M/01	A portion of licence held by on map sheet more particularly described in an application on file at Dept. of Energy and Mines	037663M Quest Inc. 12A/14
Mineral Licence held by on map sheet	031994M Stephen Stockley Agriculture and Fabrication Inc. 14L/05	Mineral Licence held by on map sheet	032081M Bradley, Angus 02E/01
Mineral Licence held by on map sheet	039227M Adey, Wilson 02E/10	Mineral Licence held by on map sheet	032093M McCallum, Amanda 02C/05
		Mineral Licence held by on map sheet	032112M Wheeler Resources Inc. 12B/16

Mineral Licence held by on map sheet	032117M Wheeler Resources Inc. 12B/16	Mineral Licence held by on map sheet	039661M Stephen Stockley Agriculture and Fabrication Inc. 13F/07
Mineral Licence held by on map sheet	038668M Ryan, Shawn 02E/03	Mineral Licence held by on map sheet	039662M Stephen Stockley Agriculture and Fabrication Inc. 13F/07
Mineral Licence held by on map sheet	032131M Ryan, Shawn A. 02E/14, 02E/13	Mineral Licence held by on map sheet	032190M Stephen Stockley Agriculture and Fabrication Inc. 13A/08
Mineral Licence held by on map sheet	032152M Burton, Noelle 02E/13	Mineral Licence held by on map sheet	032191M Stephen Stockley Agriculture and Fabrication Inc. 13A/08
Mineral Licence held by on map sheet	032153M Burton, Noelle 02E/13	Mineral Licence held by on map sheet	032193M Stephen Stockley Agriculture and Fabrication Inc. 13M/11
Mineral Licence held by on map sheet	032154M Burton, Noelle 02E/13	Mineral Licence held by on map sheet	032194M Stephen Stockley Agriculture and Fabrication Inc. 11P/13
Mineral Licence held by on map sheet	032155M Fraser, Dean 14E/01	Mineral Licence held by on map sheet	032195M Stephen Stockley Agriculture and Fabrication Inc. 11P/14
Mineral Licence held by on map sheet	032158M Golden Planet Mining Corp. 12I/01	A portion of licence held by on map sheet more particularly described in an application on file at Dept. of Energy and Mines	032213M Christopher, Terry 14E/01
Mineral Licence held by on map sheet	032159M Golden Planet Mining Corp. 12I/01	A portion of licence held by on map sheet more particularly described in an application on file at Dept. of Energy and Mines	040599M Christopher, Terry 14E/01
Mineral Licence held by on map sheet	032160M Golden Planet Mining Corp. 12I/01	Mineral Licence held by on map sheet	032254M Stephen Stockley Agriculture and Fabrication Inc. 13K/10
Mineral Licence held by on map sheet	032181M Ryan, Shawn A. 02E/13		
Mineral Licence held by on map sheet	032187M Stephen Stockley Agriculture and Fabrication Inc. 13F/04, 13F/03		
Mineral Licence held by on map sheet	032188M Stephen Stockley Agriculture and Fabrication Inc. 13F/03		

A portion of licence held by on map sheet more particularly described in an application on file at Dept. of Energy and Mines	037780M Quest Inc. 12A/14	Mineral Licence held by on map sheet	033603M Marvel Discovery Corporation 12B/09
A portion of licence held by on map sheet more particularly described in an application on file at Dept. of Energy and Mines	040605M Fraser, Dean 14E/01	Mineral Licence held by on map sheet	033609M Red Bay Exploration Inc. 12B/08
A portion of licence held by on map sheet more particularly described in an application on file at Dept. of Energy and Mines	040606M Fraser, Dean 14E/01	Mineral Licence held by on map sheet	033616M Falcon Gold Corp. 11P/14
A portion of licence held by on map sheet more particularly described in an application on file at Dept. of Energy and Mines	033050M Fraser, Dean 14E/01	Mineral Licence held by on map sheet	033687M York Harbour Metals Inc. 12G/08
A portion of licence held by on map sheet more particularly described in an application on file at Dept. of Energy and Mines	033050M Fraser, Dean 14E/01	Mineral Licence held by on map sheet	033693M York Harbour Metals Inc. 12G/08
Mineral Licence held by on map sheet	033517M Parsons, Tolson 11P/09	Mineral Licence held by on map sheet	033840M Hicks, Darrin 13J/15
Mineral Licence held by on map sheet	033518M Rogers, James 01N/13	Mineral Licence held by on map sheet	037487M Big Land Exploration Ltd. 23G/09
Mineral Licence held by on map sheet	033522M Adey, Colin 02D/09	Mineral Licence held by on map sheet	037486M Big Land Exploration Ltd. 23G/09
Mineral Licence held by on map sheet	033527M Gardner, Art 03D/05	Mineral Licence held by on map sheet	033884M Commander Resources Ltd.(85%)/Fjordland Exploration Inc.(15%) 13M/08, 13N/05, 13M/09
A portion of licence held by on map sheet more particularly described in an application on file at Dept. of Energy and Mines	033550M Fraser, Dean 14E/01	Mineral Licence held by on map sheet	033885M Commander Resources Ltd. 13N/05
Mineral Licence held by on map sheet	033573M Fleming, Nathan 12A/11	Mineral Licence held by on map sheet	033941M Stephen Stockley Agriculture and Fabrication Inc. 13L/05
Mineral Licence held by on map sheet	033580M Adey, Colin 02D/09	Mineral Licence held by on map sheet	033943M Stephen Stockley Agriculture and Fabrication Inc. 13L/05
Mineral Licence held by on map sheet	033594M Marvel Discovery Corporation 12B/09		

A portion of licence 037371M  
held by Quest Inc.  
on map sheet 01M/11, 01M/14  
more particularly described in an application on file  
at Dept. of Energy and Mines

The lands covered by this notice except for the lands within Exempt Mineral Lands, the Exempt Mineral Lands being described in CNLR 1143/96 and NLR 71/98, 104/98, 97/00, 36/01, 31/04, 78/06, 8/08, 28/09, 5/13, 3/17, 12/22, 76/23 and 34/24, and outlined on 1:50 000 scale digital maps maintained by the Department of Industry, Energy and Technology, will be open for staking after the hour of 9:00 a.m. on the 32<sup>nd</sup> clear day after the date of this publication.

DEPARTMENT OF ENERGY AND MINES  
TRINA ADAMS  
Mineral Claims Recorder

May 15

### CITY OF CORNER BROOK ACT, 1990



#### URBAN AND RURAL PLANNING ACT NOTICE OF REGISTRATION MUNICIPAL/DEVELOPMENT REGULATION AMENDMENT NO. 25-02

TAKE NOTICE that the CITY OF CORNER BROOK MUNICIPAL PLAN AMENDMENT NO. 25-02 AND DEVELOPMENT REGULATIONS NO. 25-02, adopted on the 9<sup>th</sup> day of March, 2026 and approved on the 13<sup>th</sup> day of April, 2026, have been registered by the Minister of Municipal Affairs and Environment.

The Planning and Development Department received a series of requests to change land use designations as part of the ongoing Municipal Plan update process. Given the anticipated approval and registration timelines associated with the new Municipal Plan, the requests are being accommodated through amendments to the Generalized Future Land Use Map of the Integrated Municipal Sustainability Plan.

A description of each amendment and associated plan policy compliance is offered below:

#### 55 Premier Drive

- Change from Residential to General Commercial
- Amendment is required to facilitate the expansion of the existing funeral home and extend the parking lot.

#### 23 & 27 Humber Road

- Change from Open Space to Residential Commercial Mix
- Amendment is required to facilitate the redevelopment of two buildings along a collector road.

#### Massey Drive / TCH Area

- Change from Rural to Light Industrial
- Amendment is required to legalize a non-conforming use and to facilitate the development of a storage warehouse in the future.

#### Bolands Avenue and Barry Place

- Change from General Industrial to Residential, and from Residential Commercial Mix to Residential.
- Amendment is required to facilitate redevelopment of residential lots and position the vacant property for residential infill development.

#### 649 O'Connell Drive

- Change from Open Space to Residential
- Amendment is required to bring existing use into conformity with the Municipal Plan.

THE CORNER BROOK MUNICIPAL PLAN AMENDMENT NO. 25-02 AND DEVELOPMENT REGULATIONS AMENDMENT NO. 25-02 come into effect the day this notice is published in *The Newfoundland and Labrador Gazette*.

Anyone wishing to inspect a copy of the CORNER BROOK MUNICIPAL PLAN AMENDMENT NO. 25-02 AND DEVELOPMENT REGULATIONS AMENDMENT NO. 25-02 may do so at City Hall, Corner Brook during normal business hours.

CITY OF CORNER BROOK  
Jessica Smith, City Clerk

May 15

### URBAN AND RURAL PLANNING ACT, 2000

#### NOTICE OF REGISTRATION TOWN OF NEW-WES-VALLEY MUNICIPAL PLAN AMENDMENT NO. 3 AND DEVELOPMENT REGULATIONS AMENDMENT NO. 4, 2025

TAKE NOTICE that the TOWN OF NEW-WES-VALLEY MUNICIPAL PLAN AMENDMENT

NO. 3 AND DEVELOPMENT REGULATIONS AMENDMENT NO. 4, 2025, adopted on the 15<sup>th</sup> day of July, 2025, and approved on the 10<sup>th</sup> day of March, 2026, have been registered by the Minister of Municipal Affairs.

IN GENERAL TERMS, the amendments redesignate and rezone approximately 15ha of land in Wesleyville, from Rural to Mixed Development to facilitate construction of new housing in the community.

THE NEW-WES-VALLEY MUNICIPAL PLAN AND DEVELOPMENT REGULATIONS AMENDMENTS come into effect on the day that this notice is published in *The Newfoundland and Labrador Gazette*. Anyone who wishes to inspect a copy of these amendments may do so at the Town Office, during normal working hours.

May 15

**NOTICE OF REGISTRATION  
CITY OF ST. JOHN'S  
DEVELOPMENT REGULATIONS  
AMENDMENT NUMBER 68  
PUBLIC CONSULTATION**

TAKE NOTICE that ST. JOHN'S DEVELOPMENT REGULATIONS AMENDMENT NUMBER 68, 2026, adopted on April 21, 2026, has been registered by the Minister of Municipal and Community Affairs.

IN GENERAL TERMS, the purpose of ST. JOHN'S DEVELOPMENT REGULATIONS AMENDMENT NUMBER 68, 2026, is to update Public Consultation and Variance regulations to meet the requirements of the *Urban and Rural Planning Act* and require on-site notices for planning applications.

This amendment comes into effect on the date that this notice is printed in *The Newfoundland and Labrador Gazette*. For further information, please contact (709) 576-6192 or [planning@stjohns.ca](mailto:planning@stjohns.ca).

KEN O'BRIEN, MCIP,  
Chief Municipal Planner

May 15

**NOTICE OF REGISTRATION  
CITY OF ST. JOHN'S  
DEVELOPMENT REGULATIONS  
AMENDMENT NUMBER 73  
358-376 PORTUGAL COVE PLACE**

TAKE NOTICE that ST. JOHN'S DEVELOPMENT REGULATIONS AMENDMENT NUMBER

73, 2026, adopted on February 24, 2026, has been registered by the Minister of Municipal and Community Affairs.

IN GENERAL TERMS, the purpose of ST. JOHN'S DEVELOPMENT REGULATIONS AMENDMENT NUMBER 73, 2026, is to rezone land at 358-376 Portugal Cove Place from the Residential 1 (R1) Zone to the Residential 2 (R2) and Apartment 1 (A1) Zone for a residential development and reduce the landscaping requirement in the A1 Zone to 30%.

This amendment comes into effect on the date that this notice is printed in *The Newfoundland and Labrador Gazette*. For further information, please contact (709) 576-6192 or [planning@stjohns.ca](mailto:planning@stjohns.ca).

KEN O'BRIEN, MCIP,  
Chief Municipal Planner

May 15

**NOTICE OF REGISTRATION  
ST. JOHN'S URBAN REGION  
REGIONAL PLAN  
AMENDMENT NO. 108, 2025  
TOWN OF LOGY BAY-  
MIDDLE COVE-OUTER COVE  
MUNICIPAL PLAN  
AMENDMENT NO. 2, 2024 and  
TOWN OF LOGY BAY-  
MIDDLE COVE-OUTER COVE  
DEVELOPMENT REGULATIONS  
AMENDMENT NO. 3, 2024**

TAKE NOTICE That the ST. JOHN'S URBAN REGION REGIONAL PLAN AMENDMENT NO. 108, 2025, as adopted by the Minister of Municipal and Community Affairs on the 23<sup>rd</sup> day of December 2025, has now been approved and registered by the Minister.

IN GENERAL TERMS, the purpose of the ST. JOHN'S URBAN REGION REGIONAL PLAN AMENDMENT NO. 108, 2025, is to redesignate land from 'Rural' to 'Urban' development in order to bring the proposed MUNICIPAL PLAN AMENDMENT NO. 2, 2024 and DEVELOPMENT REGULATIONS AMENDMENT NO. 3, 2024 into conformity with the regional plan.

TAKE FURTHER NOTICE, that the TOWN OF LOGY BAY-MIDDLE COVE-OUTER COVE MUNICIPAL PLAN AMENDMENT NO. 2, 2024 and DEVELOPMENT REGULATIONS AMENDMENT NO. 3, 2024, was approved by the

Town of Logy Bay-Middle Cove-Outer Cove Council on March 25, 2026, and has now been registered by the Department of Municipal and Community Affairs.

THE PURPOSE of the MUNICIPAL PLAN and DEVELOPMENT REGULATIONS AMENDMENT is to redesignate land from ‘Rural’ to ‘Rural Residential’ and correspondingly rezone the land from ‘Rural (Rural)’ to ‘Rural Residential Two (RR2)’ to allow the residential development of two lots in the Jones Pond West subdivision.

THE SAID REGIONAL PLAN AMENDMENT NO. 108, 2025, MUNICIPAL PLAN AMENDMENT NO 2, 2024 and DEVELOPMENT REGULATIONS AMENDMENT NO. 3, 2024, comes into effect on the date that this notice is printed in *The Newfoundland and Labrador Gazette*. For further information, please contact the Town Office at office@lbmccoc.ca or (709) 726-7930.

NEIL STAMP  
Town Clerk/Manager

May 15

## MECHANICS LIEN ACT

### NOTICE OF INTENTION TO RELEASE HOLDBACK PURSUANT TO SECTIONS 12.1 TO 12.3 OF THE MECHANICS’ LIEN ACT, RSNL 1990, C M-3 (THE “ACT”)

PROJECT: The last-mile network broadband capacity in the 4A Grand Falls – South and 4A.1 Grand Falls-North areas, Newfoundland and Labrador (the “Project”)

XPLORE FIBRE UBF-WEST-NL NETWORK LP (the “Owner”) intends to complete an annual release of holdback to WesTower Communications Ltd. (“WesTower”) pursuant to section 12.1 of the Act, in relation to WesTower’s work on the Project under its contract with the Owner (the “Prime Contract”) in the period from January 24, 2025 to January 24, 2026.

Pursuant to section 12.2 of the Act, the Owner hereby gives notice to all persons providing services or materials in the performance of the Prime Contract and/or any subcontract from January 24, 2025 to January 24, 2026 that the Owner intends to release WesTower’s requested holdback upon the expiration of 30 days from the date of this notice.

ANY PERSONS having outstanding claims against WesTower, or subcontractors to WesTower, in relation

to the Project, in order to make a claim for payment against holdback monies certified as owing up to January 24, 2026, are instructed to notify the Owner in writing within 30 days of the date of this notice by registered mail or courier at the following address:

OWNER: XPLORE FIBRE UBF-WEST-NL NETWORK LP 625 Cochrane Drive, Suite 1000, Markham, ON L3R 9R9

Pursuant to section 12.3(1) and (2) of the Act, any proceedings to enforce a claim for lien of a contractor, subcontractor, or other person providing services or materials under the Prime Contract or a subcontract from January 24, 2025 to January 24, 2026 must be commenced within 30 days of this notice. After that time, any lien for services or materials provided under the Prime Contract or a subcontract on or before January 24, 2026 will expire, in accordance with the Act.

ANY CLAIMS for liens regarding services or materials provided after January 24, 2026 are not affected by section 12.3(1) and (2), but remain subject to the other provisions of the Act regarding lien claims.

Derek Leno  
Chief Construction Officer  
XPLORE FIBRE UBF-WEST-NL NETWORK LP

May 15

## QUIETING OF TITLES ACT

### 2025 06G 0099 IN THE SUPREME COURT OF NEWFOUNDLAND AND LABRADOR (GENERAL DIVISION)

NOTICE OF APPLICATION under the *Quieting of Titles Act*, RSNL1990 cQ-3.

NOTICE IS HEREBY given to all parties that WARREN PLOUGHMAN, of the City of Barrie, in the Province of Ontario, has applied to the Supreme Court, General Division, Grand Bank, to have title to all that piece or parcel of property situate at the Town of Port Rexton, in the District of Bonavista, in the Province of Newfoundland and Labrador, which property is more particularly described in Schedules “A” hereto annexed and shown in Schedules “B” hereto annexed, as Parcels “A”, “B”, “C”, and “D”.

ALL BEARINGS aforementioned, for which WARREN PLOUGHMAN claims to be the owner investigated and for a Declaration that WARREN

PLOUGHMAN is the absolute owner in fee simple in possession and the said WARREN PLOUGHMAN has been ordered to publish this Notice of Application as required by the above named Act.

ALL PERSONS having title adverse to the said title claimed by the said WARREN PLOUGHMAN shall file in the Registry of the Supreme Court of Newfoundland and Labrador, Grand Bank, particulars of such adverse claim and serve the same together with an Affidavit verifying same on the undersigned Solicitors for the Petitioner on or before the 17<sup>th</sup> day of June, 2026, after which date no party having any claim shall be permitted to file the same or to be heard except by special leave of the Court and subject to such conditions as the Court may deem just.

All such adverse claims shall be investigated then in such manner as the Supreme Court of Newfoundland and Labrador, Grand Bank, may direct.

DATED AT Clarenville, in the Province of Newfoundland and Labrador, this 10<sup>th</sup> day of July, 2025.

MILLS PITTMAN & TWYNE  
Solicitors for the Applicant  
PER: GREGORY J. FRENCH

ADDRESS FOR SERVICE:  
111 Manitoba Drive  
Suite 201  
Clarenville, NL A5A 1K2

Tel: (709) 466-2641  
Fax: (709) 466-7109

#### SCHEDULE "A"

WARREN and KERRY PLOUGHMAN  
Parcel "A"  
Port Rexton, NL

ALL THAT piece or parcel of land situate and being in the Town of PORT REXTON in the Electoral District of Bonavista abutted and bounded as follows:

THAT IS TO SAY: Beginning at a point on the eastern limit of the former Canadian National Railway Right-of-Way (15.24 metres wide) now Crown Land, the said point having coordinates N 5 361 142.298 metres and E 280 090.871 metres of the Three Degree Modified Transverse Mercator Projection (NAD-83) for the Province of Newfoundland and Labrador;

THENCE along the said eastern limit of the former Canadian National Railway Right-of-Way now

Crown Land along the arc of a curve having a radius of two hundred and forty-nine decimal five zero zero (249.500) metres to a point, the said point being distant sixty decimal nine three eight (60.938) metres as measured on a bearing of north twenty-four degrees twenty-two minutes twenty-two seconds west (N 24-22-22 W) from the last mentioned point;

THENCE along the said eastern limit of the former Canadian National Railway Right-of-Way now Crown Land north seventeen degrees zero five minutes forty-three seconds west (N 17-05-43 W) thirty-five decimal five six one (35.561) metres;

THENCE by property of Sean Doran (Reg. No. 540736) south thirty-one degrees zero two minutes forty seconds east (S 31-02-40 E) fourteen decimal eight zero three (14.803) metres, south sixty-seven degrees zero zero minutes twenty-five seconds east (S 67-00-25 E) thirty-nine decimal six three two (39.632) metres;

THENCE by property of the Estate of the Late Charles Randell claimed by Gerald Randell south seventy-six degrees twenty-three minutes thirty-five seconds east (S 76-23-35 E) forty-four decimal three eight zero (44.380) metres;

THENCE by property of Frederick Nurse (roll 2508-frame 670) south eighty-three degrees twelve minutes thirty-five seconds east (S 83-12-35 E) twenty-one decimal four zero three (21.403) metres;

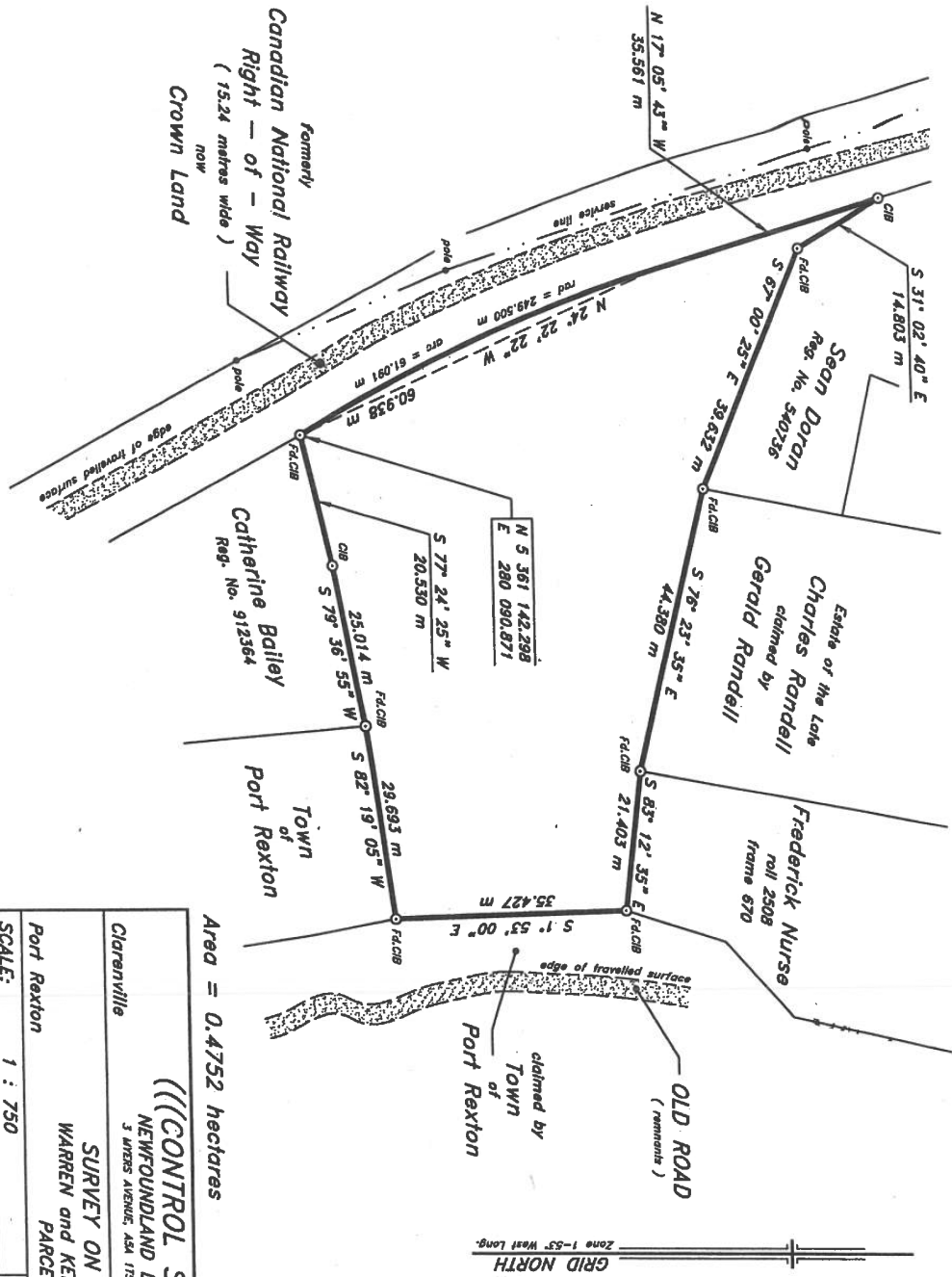
THENCE by property claimed by the Town of Port Rexton south one degree fifty-three minutes zero zero seconds east (S 1-53-00 E) thirty-five decimal four two seven (35.427) metres;

THENCE by property of the Town of Port Rexton south eighty-two degrees nineteen minutes zero five seconds west (S 82-19-05 W) twenty-nine decimal six nine three (29.693) metres;

THENCE by property of Catherine Bailey (Reg.No. 912364) south seventy-nine degrees thirty-six minutes fifty-five seconds west (S 79-36-55 W) twenty-five decimal zero four one (25.014) metres, south seventy-seven degrees twenty-four minutes twenty-five seconds west (S 77-24-25 W) twenty decimal five three zero (20.530) metres, more or less to the point of beginning and containing an area of 0.4752 hectares.

ALL BEARINGS refer to the above mentioned Projection.

((CONTROL SURVEYS LTD.



Area = 0.4752 hectares

NOTE:  
 - NO SCALE FACTOR USED  
 - ALL DISTANCES ARE GRID DISTANCES



NOTE:  
 Starting point derived from Real Time Kinematic GPS observations relative to Control Monument No. 834 024

**CONTROL MONUMENTS**  
 (MAD-83)

834 024	N 5 359	875.678
	E 279	442.069
834 038	N 5 360	415.424
	E 278	826.391

<b>(((CONTROL SURVEYS LTD.)))</b>		
NEWFOUNDLAND LAND SURVEYORS		
3 WINDS AVENUE, 434 175 - The (709) 466-3866		Newfoundland
<b>SURVEY ON BEHALF OF</b>		
<b>WARREN and KERRY PLOUGHMAN</b>		
PARCEL "A"		
Port Rexton		Newfoundland
SCALE:	1 : 750	
DATE:	August 30, 2024	
	JOB No.:	2024-388
	SURVEY BY:	J.D.B.

**SCHEDULE "A"**

WARREN and KERRY PLOUGHMAN  
Parcel "B"  
Port Rexton, NL

ALL THAT piece or parcel of land situate and being in the Town of PORT REXTON in the Electoral District of Bonavista abutted and bounded as follows:

THAT IS TO SAY: Beginning at a point on the eastern limit of BALLETT'S LANE, the said point having coordinates N 5 360 813.957 metres and E 280 365.149 metres of the Three Degree Modified Transverse Mercator Projection (NAD-83) for the Province of Newfoundland and Labrador;

THENCE along the southern limit of BAILEY'S HEAD ROAD north sixty-nine degrees twenty-eight minutes twenty-five seconds east (N 69-28-25 E) twenty-seven decimal nine nine three (27.993) metres;

THENCE along the southern limit of BANNISTER'S LANE along the arc of a curve having a radius of seventeen decimal five three five (17.535) metres to a point, the said point being distant sixteen decimal one nine zero (16.190) metres as measured on a bearing of south fifty-two degrees forty-three minutes twenty-two seconds east (S 52-43-22 E) from the last mentioned point;

THENCE along the southern limit of BANNISTER'S LANE south four degrees fifty-one minutes fifteen seconds east (S 4-51-15 E) thirty-eight decimal six one one (38.611) metres;

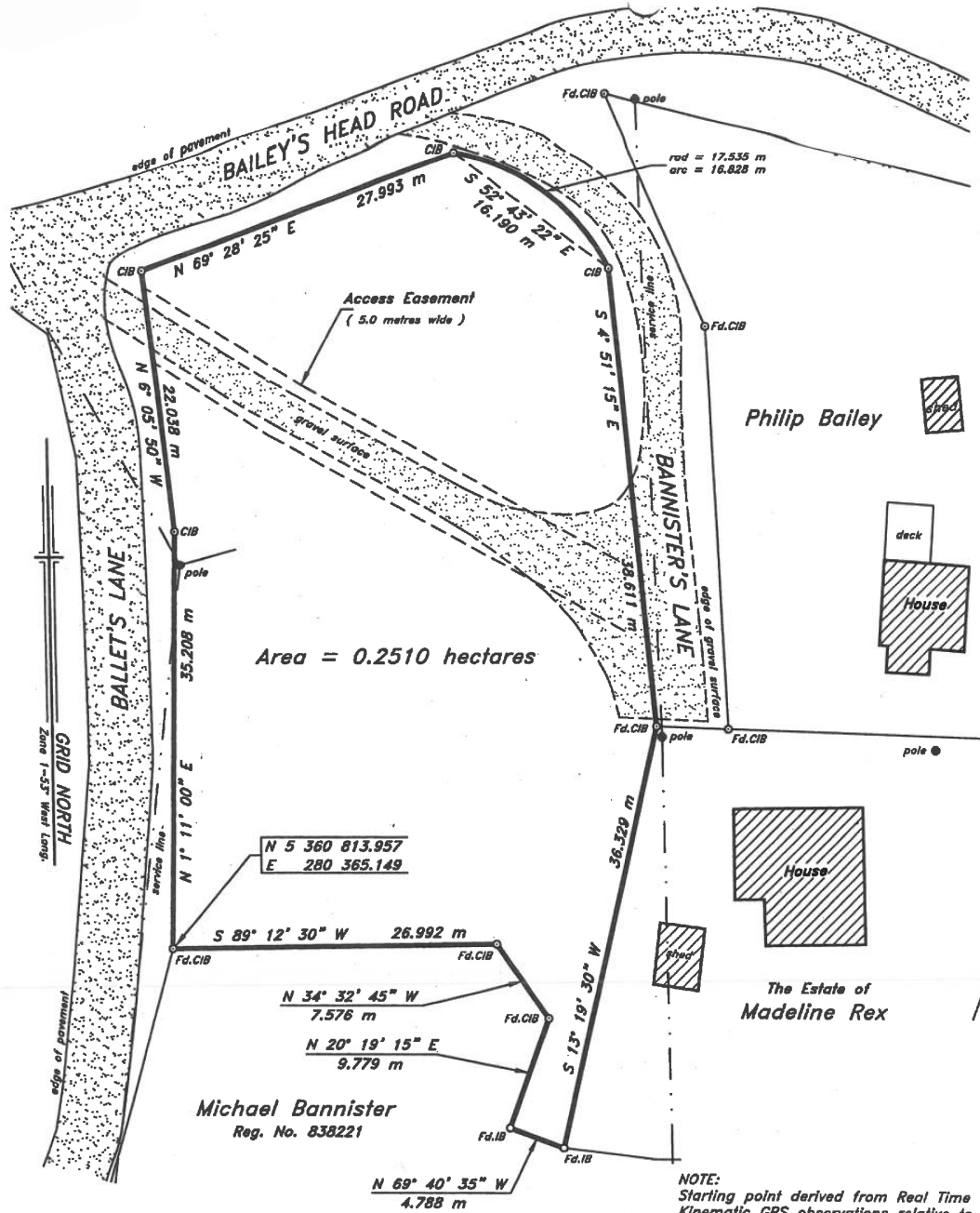
THENCE by property of the Estate of Madeline Rex south thirteen degrees nineteen minutes thirty seconds west (S 13-19-30 W) thirty-six decimal three two nine (36.329) metres;

THENCE by property of Michael Bannister (Reg. No. 838221) north sixty-nine degrees forty minutes thirty-five seconds west (N 69-40-35 W) four decimal seven eight eight (4.788) metres, north twenty degrees nineteen minutes fifteen seconds east (N 20-19-15 E) nine decimal seven seven nine (9.779) metres, north thirty-four degrees thirty-two minutes forty-five seconds west (N 34-32-45 W) seven decimal five seven six (7.576) metres, south eighty-nine degrees twelve minutes thirty seconds west (S 89-12-30 W) twenty-six decimal nine nine two (26.992) metres, more or less to the point of beginning and containing an area of 0.2510 hectares.

ALL BEARINGS refer to the above mentioned Projection.

The above described piece or parcel of land is subject to an Access Easement (5.0 metres wide) extending through the subject property as shown on the plan hereto attached.

((((CONTROL SURVEYS LTD.



Area = 0.2510 hectares

N 5 360 813.957  
E 280 365.149

Michael Bannister  
Reg. No. 838221

The Estate of  
Madeline Rex

NOTE:  
Starting point derived from Real Time  
Kinematic GPS observations relative to  
Control Monument No. 834 024

NOTE ○ CIB CAPPED IRON BAR  
○ IB IRON BAR  
○ Fd. FOUND  
- NO SCALE FACTOR USED  
ALL DISTANCES ARE GRID DISTANCES

**CONTROL MONUMENTS**  
( NAD-83 )

834 024	N 5 359 875.678
	E 279 442.069
834 038	N 5 360 415.424
	E 278 826.391



**(((CONTROL SURVEYS LTD.**  
NEWFOUNDLAND LAND SURVEYORS  
5 MYERS AVENUE, A5A 1T5 - Tel: (709) 486-3666

Clarenville		Newfoundland
<b>SURVEY ON BEHALF OF WARREN and KERRY PLOUGHMAN PARCEL "B"</b>		
Port Rexton		Newfoundland
SCALE:	1 : 400	JOB No.: 2024-388
DATE:	August 30, 2024	SURVEY BY: J.D.B.

**SCHEDULE "A"**

WARREN and KERRY PLOUGHMAN  
Parcel "C"  
Port Rexton, NL

ALL THAT piece or parcel of land situate and being in the Town of PORT REXTON in the Electoral District of Bonavista abutted and bounded as follows:

THAT IS TO SAY: Beginning at a point on the northern limit of a LOCAL ROAD, the said point having coordinates N 5 360 790.528 metres and E 280 619.277 metres of the Three Degree Modified Transverse Mercator Projection (NAD-83) for the Province of Newfoundland and Labrador;

THENCE by property claimed by CATHERINE BAILEY north eleven degrees twenty-four minutes fifty-five seconds east (N 11-24-55 E) thirteen decimal five seven five (13.575) metres, north five degrees zero three minutes zero zero seconds west (N 5-03-00 W) twenty-two decimal two four one (22.241) metres;

THENCE by property of CATHERINE BAILEY (Q. of T. No. 1983 No. 223 ) (vol. 3870-fol, 288) north eighty-three degrees ten minutes twenty-five seconds east (N 83-10-25 E) thirteen decimal three eight eight (13.388) metres, north seventeen degrees nineteen minutes forty-five seconds east (N 17-19-45 E) four decimal three six one (4.361) metres, north forty-four degrees forty-six minutes forty seconds west (N 44-46-40 W) ten decimal four six five (10.465) metres;

THENCE by property of Geraldine Bailey (Reg. No. 234536) north sixty-four degrees forty-three minutes fifteen seconds east (N 64-43-15 E) seventeen decimal zero three five (17.035) metres;

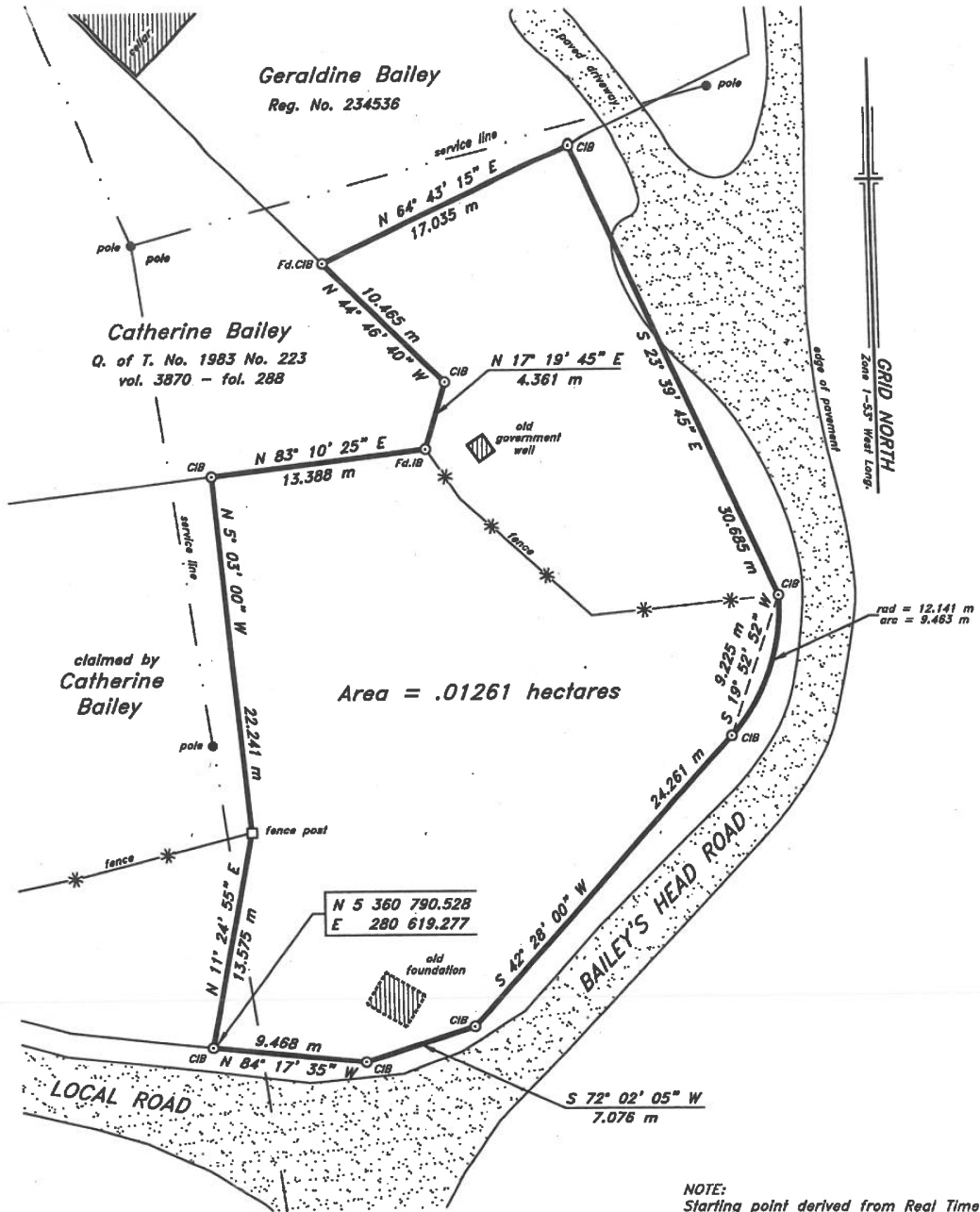
THENCE along the western limit of BAILEY'S HEAD ROAD along the arc of a curve having a radius of twelve decimal one four one (12.141) metres to appoint, the said point being distant nine decimal two two five (9.225) metres as measured on a bearing of south nineteen degrees fifty-two minutes fifty-two seconds. west (S 19-52-52 W) from the last mentioned point;

THENCE along said western limit of BAILEY'S HEAD ROAD south forty-two degrees twenty-eight minutes zero zero seconds west (S 42-28-00 W) twenty-four decimal two six one (24.261) metres, south seventy-two degrees zero two minutes zero five seconds west (S 72-02-05 W) seven decimal zero seven six (7.076) metres;

THENCE along the said northern limit of a LOCAL ROAD north eighty-four degrees seventeen minutes thirty-five seconds west (N 84-17-35 W) nine decimal four six eight (9.468) metres, more or less to the point of beginning and containing an area of 0.1261 hectares.

ALL BEARINGS refer to the above mentioned Projection.

((((CONTROL SURVEYS LTD.



Area = .01261 hectares

NOTE:  
Starting point derived from Real Time Kinematic GPS observations relative to Control Monument No. 834 024

NOTE  
 ○ CIB CAPPED IRON BAR  
 ○ IB IRON BAR  
 ○ Fd. FOUND  
 - NO SCALE FACTOR USED  
 ALL DISTANCES ARE GRID DISTANCES

**CONTROL MONUMENTS**  
( NAD-83 )

834 024	N 5 359 875.678
	E 279 442.069
834 038	N 5 360 415.424
	E 278 826.391



(((CONTROL SURVEYS LTD. NEWFOUNDLAND LAND SURVEYORS 3 MYERS AVENUE, ASA 1175 - Tel: (709) 466-3666	
Clarenville	Newfoundland
SURVEY ON BEHALF OF WARREN and KERRY PLOUGHMAN PARCEL "C"	
Port Rexton	Newfoundland
SCALE: 1 : 300	JOB No.: 2024-388
DATE: August 30, 2024	SURVEY BY: J.D.B.

**SCHEDULE "A"**

WARREN and KERRY PLOUGHMAN  
Parcel "D"  
Port Rexton, NL

ALL THAT piece or parcel of land situate and being in the Town of PORT REXTON in the Electoral District of Bonavista abutted and bounded as follows:

THAT IS TO SAY: Beginning at a point on the eastern limit of NEWHOOK'S ROAD, the said point having coordinates N 5 360 247.846 metres and E 280 124.625 metres of the Three Degree Modified Transverse Mercator Projection (NAD-83) for the Province of Newfoundland and Labrador;

THENCE along the said eastern limit of NEWHOOK'S ROAD north fourteen degrees thirty-six minutes fifteen seconds west (N 14-36-15 W) fifty-eight decimal two seven nine (58.279) metres;

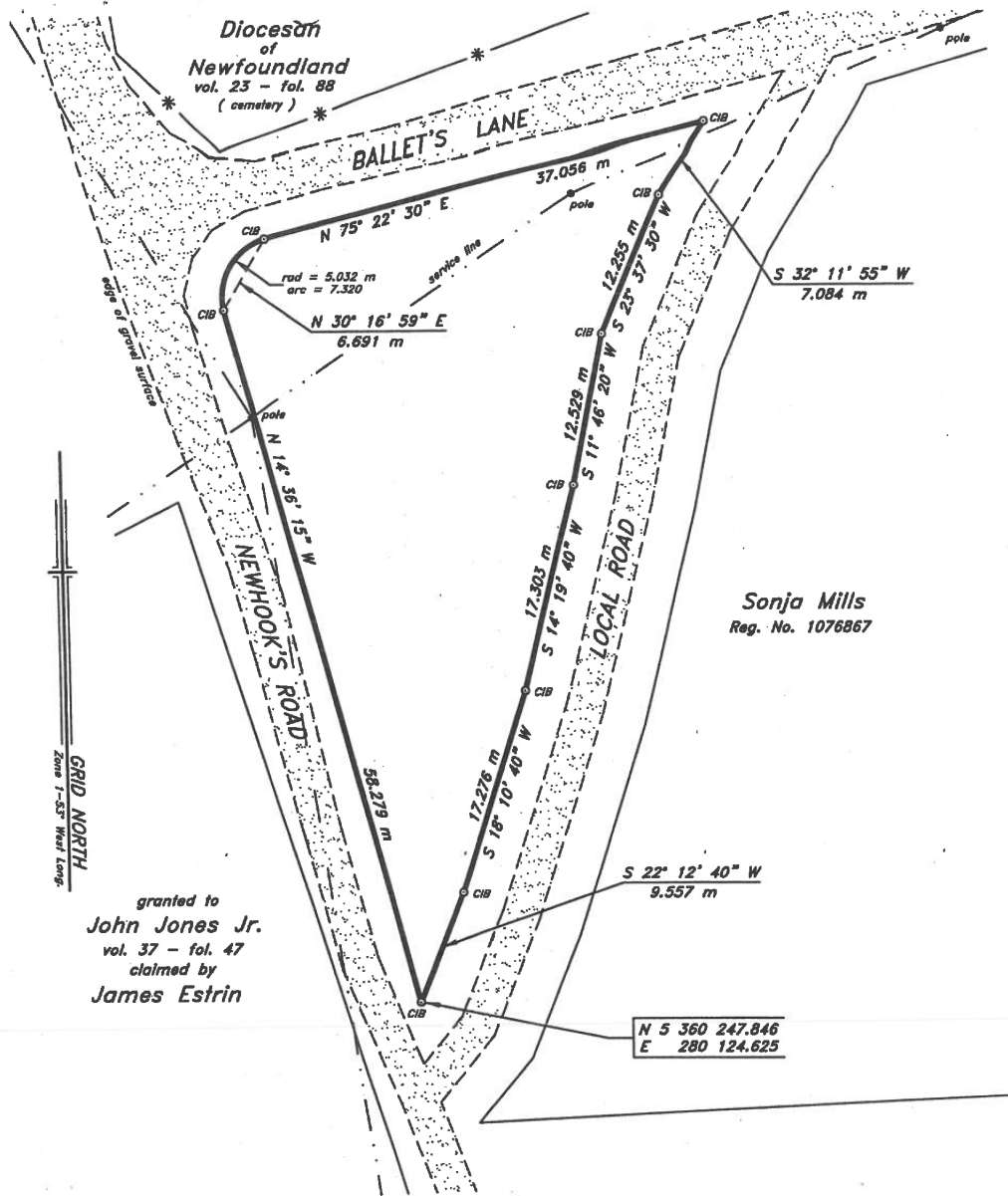
THENCE along the southern limit of the intersection of NEWHOOK'S ROAD and BALLETT'S LANE along the arc of a curve having a radius of five decimal zero three two (5.032) metres to appoint, the said point being distant six decimal six nine one (6.691) metres as measured on a bearing of north thirty degrees sixteen minutes fifty-nine seconds east (N 30-16-59 E) from the last mentioned point;

THENCE along the southern limit of BALLETT'S LANE north seventy-five degrees twenty-two minutes thirty seconds east (N 75-22-30 E) thirtyseven decimal zero five six (37.056) metres;

THENCE along the western limit of a LOCAL ROAD south thirty-two degrees eleven minutes fifty-five seconds west (S 32-11-55 W) seven decimal zero eight four (7.084) metres, south twenty-three degrees thirty-seven minutes thirty seconds west (S 23-37-30 W) twelve decimal two five five (12.255) metres, south eleven degrees forty-six minutes twenty seconds west (S 11-46-20 W) twelve decimal five two nine (12.529) metres, south fourteen degrees nineteen minutes forty seconds west (S 14-19-40 W) seventeen decimal three zero three (17.303) metres, south eighteen degrees ten minutes forty seconds west (S 18-10-40 W) seventeen decimal two seven six (17.276) metres, south twenty-two degrees twelve minutes forty seconds west (S 22-12-40 W) nine decimal five five seven (9.557) metres, more or less to the point of beginning and containing an area of 0.1254 hectares.

ALL BEARINGS refer to the above mentioned Projection.

(((CONTROL SURVEYS LTD.



granted to  
**John Jones Jr.**  
 vol. 37 - fol. 47  
 claimed by  
**James Estrin**

**Sonja Mills**  
 Reg. No. 1076867

GRID NORTH  
 Zone 1-53 West Long

Area = 0.1254 hectares

NOTE ○ CIB CAPPED IRON BAR  
 ○ IB IRON BAR  
 Fd. FOUND  
 - NO SCALE FACTOR USED  
 ALL DISTANCES ARE GRID DISTANCES



NOTE:  
 Starting point derived from Real Time  
 Kinematic GPS observations relative to  
 Control Monument No. 834 024

**CONTROL MONUMENTS**  
 ( NAD-83 )

834 024	N 5 359 875.678
	E 279 442.069
834 038	N 5 360 415.424
	E 278 826.391

(((CONTROL SURVEYS LTD. NEWFOUNDLAND LAND SURVEYORS 3 MYERS AVENUE, ASA 115 - Tel: (709) 466-3666	
Clareville	Newfoundland
SURVEY ON BEHALF OF WARREN and KERRY PLOUGHMAN PARCEL "D"	
Port Rexton	Newfoundland
SCALE: 1 : 400	JOB No.: 2024-388
DATE: August 30, 2024	SURVEY BY: J.D.B.

**2026 06G 0029**  
**IN THE SUPREME COURT OF**  
**NEWFOUNDLAND AND LABRADOR**  
**(GENERAL DIVISION)**

Tel: (709) 466-2641  
Fax: (709) 466-7109

**SCHEDULE "A"**

NOTICE OF APPLICATION under the *Quieting of Titles Act*, RSNL1990 cQ-3.

MICHAEL PATERSON  
Upper Amherst Cove, NL

NOTICE IS HEREBY given to all parties that MICHAEL and LORRAINE PATERSON, of the Community of Upper Amherst Cove, in the Province of Newfoundland and Labrador, have applied to the Supreme Court, General Division, Grand Bank, to have title to all that piece or parcel of property situate at the Community of Upper Amherst Cove, in the Province of Newfoundland and Labrador, which property is more particularly described in Schedule "A" hereto annexed and shown in Schedule "B" hereto annexed.

ALL THAT piece or parcel of land situate and being in the Community of Upper Amherst Cove, in the Electoral District of Bonavista abutted and bounded as follows:

ALL BEARINGS aforementioned, for which MICHAEL and LORRAINE PATERSON claims to be the owner investigated and for a Declaration that they are the absolute owners in fee simple in possession and the said MICHAEL and LORRAINE PATERSON has been ordered to publish this Notice of Application as required by the above named Act.

THAT IS TO SAY: Beginning at a point, the said point being the southeastern most corner of property formerly the Estate of WALLACE SKIFFINGTON now MARY FARRELLY (Reg. No. 78606) and having coordinates N 5 379 613.021 metres and E 287 578.469 metres of the Three Degree Modified Transverse Mercator Projection (NAD-83) for the Province of Newfoundland and Labrador;

ALL PERSONS having title adverse to the said title claimed by the said MICHAEL and LORRAINE PATERSON shall file in the Registry of the Supreme Court of Newfoundland and Labrador, Grand Bank, particulars of such adverse claim and serve the same together with an Affidavit verifying same on the undersigned Solicitors for the Petitioner on or before the 17<sup>th</sup> day of June, 2026, after which date no party having any claim shall be permitted to file the same or to be heard except by special leave of the Court and subject to such conditions as the Court may deem just.

THENCE by property formerly the Estate of WALLACE SKIFFINGTON now MARY FARRELLY (Reg. No. 78606) north ten degrees thirty-five minutes fifty seconds east (N 10-35-50 E) twenty-two decimal nine five two (22.952) metres;

ALL such adverse claims shall be investigated then in such manner as the Supreme Court of Newfoundland and Labrador, Grand Bank, may direct.

THENCE across a small brook north sixty-five degrees thirty-seven minutes thirty seconds east (N 65-37-30 E) seven decimal six nine zero (7.690) metres;

DATED AT Clarenville, in the Province of Newfoundland and Labrador, this 21<sup>st</sup> day of April, 2026.

MILLS PITTMAN & TWYNE  
Solicitors for the Applicant  
PER: GREGORY J. FRENCH

THENCE by property of Bert Fisher (Reg. No. 1107529) south sixty-nine degrees forty-nine minutes forty seconds east (S 69-49-40 E) five decimal four five six (5.456) metres;

ADDRESS FOR SERVICE:  
111 Manitoba Drive  
Suite 201  
Clarenville, NL A5A 1K2

THENCE by property of Terri Roberts (Reg. No. 894978) north eighty-six degrees forty-three minutes fifty seconds east (N 86-43-50 E) eighteen decimal eight two five (18.825) metres;

THENCE by Crown Land south three degrees sixteen minutes ten seconds east (S 3-16-10 E) nineteen decimal seven zero seven (19.707) metres, south thirty-six degrees fifty-eight minutes fifteen seconds east (S 36-58-15 E) fifty-one decimal zero zero four (51.004) metres, south twenty-six degrees forty-seven minutes forty-five seconds east (S 26-47-45 E) twenty-seven decimal one four zero (27.140) metres, south eighteen degrees thirty-nine minutes forty seconds west (S 18-39-40 W) fifty-six decimal one nine seven (56.197) metres, south eighty-three degrees thirty-seven minutes thirty-five seconds west (S 83-37-35 W) forty-four decimal seven seven eight

(44.778) metres, north twenty-three degrees thirty-eight minutes forty seconds west (N 23-38-40 W) twenty-eight decimal zero five one (28.051) metres, north sixty-one degrees forty-three minutes forty seconds west (N 61-43-40 W) twenty-three decimal five nine zero (23.590) metres;

THENCE along the eastern limit of a public path north four degrees thirty minutes ten seconds east (N 4-30-10 E) three decimal eight two two (3.822) metres;

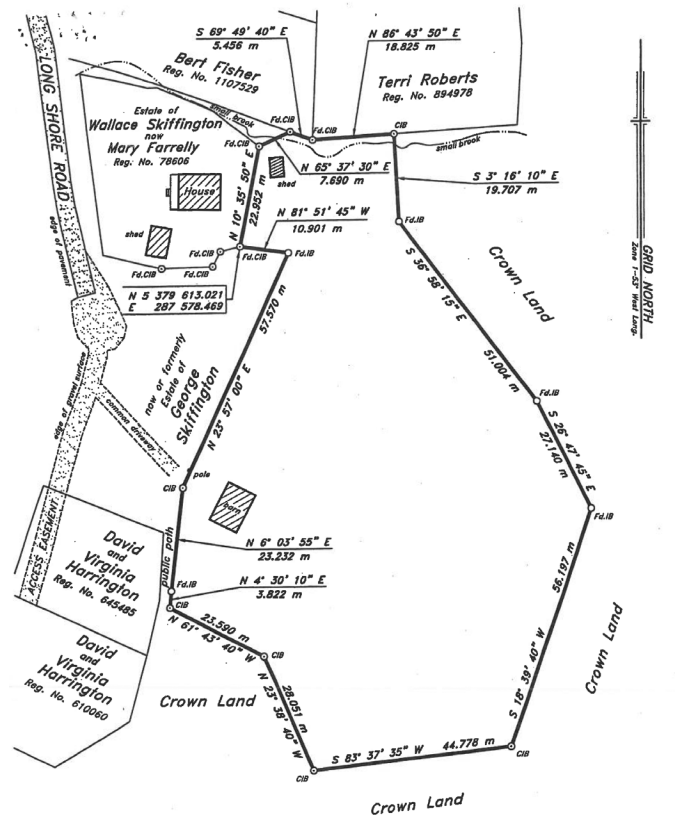
THENCE along the eastern limit of a public path and by property now or formerly Estate of GEORGE SKIFFINGTON north six degrees zero three minutes fifty-five seconds east (N 6-03-55 E) twenty-three decimal two three two (23.232) metres;

THENCE by property now or formerly Estate of GEORGE SKIFFINGTON north twenty-three degrees fifty-seven minutes zero zero seconds east (N 23-57-00 E) fifty-seven decimal five seven zero (57.570) metres, north eighty-one degrees fifty-one minutes forty-five seconds west (N 81-51-45 W) ten decimal nine zero one (10.901) metres, more or less to the point of beginning and containing an area of 0.8618 hectares.

ALL BEARINGS refer to the above mentioned Projection.

The above described piece or parcel of land is subject to a small brook extending through the property as shown on the plan hereto attached.

((((CONTROL SURVEYS LTD.



Area = 0.8618 hectares

NOTE:   
 CIB CAPPED IRON BAR   
 IRON BAR   
 Fd FOUND   
 - NO SCALE FACTOR USED   
 ALL DISTANCES ARE GRID DISTANCES

NOTE:   
 Starting point derived from Real Time Kinematic GPS observations relative to Control Monument No. 86G6024

**CONTROL MONUMENTS**

(NAD-83)   
 86G6024 N 5 379 913.110   
 E 287 517.498   
 86G6025 N 5 379 706.329   
 E 287 682.029



<b>((((CONTROL SURVEYS LTD.</b>	
NEWFOUNDLAND LAND SURVEYORS	
3 MYERS AVENUE, ASA 175 - Tel: (709) 466-3666	
Clareville	Newfoundland
SURVEY ON BEHALF OF	
MICHAEL PATERSON	
Upper Amherst Cove	Newfoundland
SCALE: 1 : 750	JOB No.: 2025-378
DATE: October 10, 2025	SURVEY BY: J.D.B.

**2026 06G 0030**  
**IN THE SUPREME COURT OF**  
**NEWFOUNDLAND AND LABRADOR**  
**(GENERAL DIVISION)**

NOTICE OF APPLICATION under the *Quieting of Titles Act*, RSNL1990 cQ-3.

NOTICE IS HEREBY given to all parties that CHRISTINE TAVERNOR, of the Community of Knight's Cove, in the Province of Newfoundland and Labrador, has applied to the Supreme Court, General Division, Grand Bank, to have title to all that piece or parcel of property situate at the Community of Knight's Cove, in the Province of Newfoundland and Labrador, which property is more particularly described in Schedules "A", "C" and "E" hereto annexed and shown in Schedules "B", "D" and "F" hereto annexed.

ALL BEARINGS aforementioned, for which CHRISTINE TAVERNOR claims to be the owner investigated and for a Declaration that they are the absolute owners in fee simple in possession and the said CHRISTINE TAVERNOR has been ordered to publish this Notice of Application as required by the above named Act.

ALL PERSONS having title adverse to the said title claimed by the said CHRISTINE TAVERNOR shall file in the Registry of the Supreme Court of Newfoundland and Labrador, Grand Bank, particulars of such adverse claim and serve the same together with an Affidavit verifying same on the undersigned Solicitors for the Petitioner on or before the 17<sup>th</sup> day of June, 2026, after which date no party having any claim shall be permitted to file the same or to be heard except by special leave of the Court and subject to such conditions as the Court may deem just.

ALL such adverse claims shall be investigated then in such manner as the Supreme Court of Newfoundland and Labrador, Grand Bank, may direct.

DATED AT Clarenville, in the Province of Newfoundland and Labrador, this 17<sup>th</sup> day of February, 2026.

MILLS PITTMAN & TWYNE  
 Solicitors for the Applicant  
 PER: GREGORY J. FRENCH

ADDRESS FOR SERVICE:  
 111 Manitoba Drive  
 Suite 201  
 Clarenville, NL A5A 1K2  
 Tel: (709) 466-2641  
 Fax: (709) 466-7109

**SCHEDULE "A"**

Allnorth NL Surveyors  
 Newfoundland Land Surveyors

August 6, 2025  
 Job No. 2502212-000-2120-000-Rev0

**DESCRIPTION**

Route 235 Knights Cove, NL

ALL that piece or parcel of land situate and being on the Southeastern side of Route 235, at Knights Cove, Newfoundland and Labrador and being bounded and abutted as follows, that is to say:

BEGINNING at a point Southeast of Route 235, said point having coordinates of North 5 377 860.941 metres and East 280 836.457 metres in the Modified Three Degree Transverse Mercator Projection [NAD83 Original] for the province of Newfoundland and Labrador, Zone One;

THENCE running along the land now or formerly of KATHERINE RICKETTS, South 30°12' 48" East, 28.858 metres;

THENCE South 61°34' 46" West, 25.440 metres;

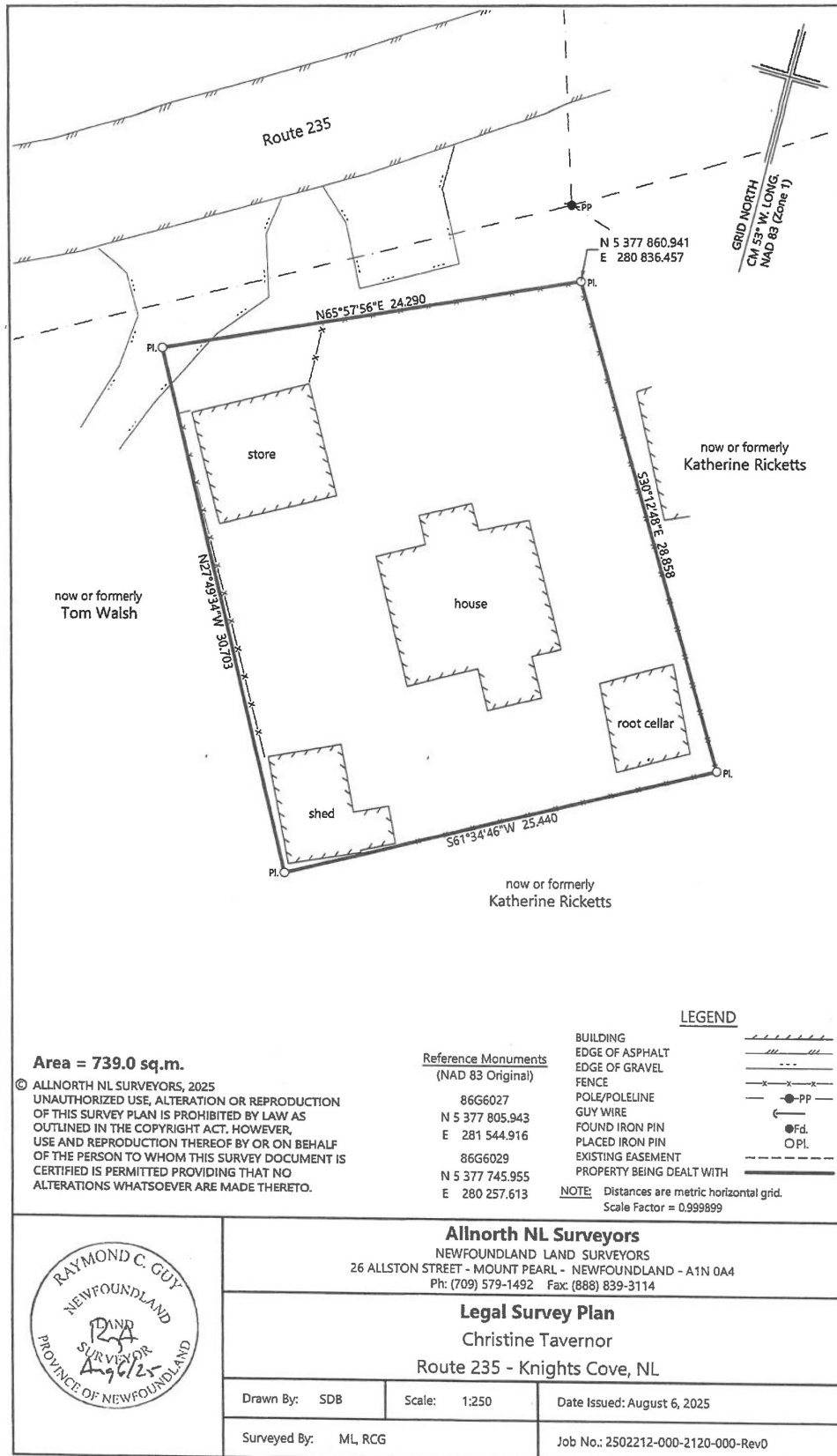
THENCE turning and running along the land now or formerly of Tom Walsh North 27°49' 34" West, 30.703 metres;

THENCE turning and running along the Southeastern limit of Route 235, North 65° 57'56" East, 24.290 metres, more or less, to the point of commencement and containing an area of 739.0 square metres, more or less, as shown on the attached plan, Job No. 2502212-000-2120-000-Rev0 dated August 6, 2025.

ALL BEARINGS are grid bearings referred to Grid North. All distances are horizontal grid distances.

© Allnorth NL Surveyors, 2025

SCHEDULE "B"



**SCHEDULE "C"**

Allnorth NL Surveyors  
Newfoundland Land Surveyors

September 5, 2025  
Job No. 2502212-000-2120-002-Rev0

**DESCRIPTION**

Route 235 Knights Cove, NL

ALL that piece or parcel of land situate and being on the Northwestern side of Route 235, at Knights Cove, Newfoundland and Labrador and being bounded and abutted as follows, that is to say:

BEGINNING at a point Northwest of Route 235, said point having coordinates of North 5 377 866.647 metres and East 280 806.030 metres in the Modified Three Degree Transverse Mercator Projection [NAD83 Original] for the province of Newfoundland and Labrador, Zone One;

THENCE running along the Northwestern limit of Route 235, on the arc of a clockwise curve 75.676 metres long having a radius of 214.990 meters on a chord bearing and distance of South 71° 08'38" West 75.286 metres;

THENCE turning and running along the land now or formerly of Katherine Ricketts, North 36° 30'37" West, 13.100 metres;

THENCE North 22° 59'49" West, 7.085 metres;

THENCE North 37° 31'01" East, 3.578 metres;

THENCE North 42° 56'19" East, 2.005 metres;

THENCE North 60° 21'06" East, 20.029 metres;

THENCE North 73° 13'03" East, 15.966 metres;

THENCE North 78° 20'36" East, 5.479 metres;

THENCE North 89° 46'33" East, 10.219 metres;

THENCE North 78° 52'10" East, 8.392 metres;

THENCE North 82° 00'06" East, 12.347 metres;

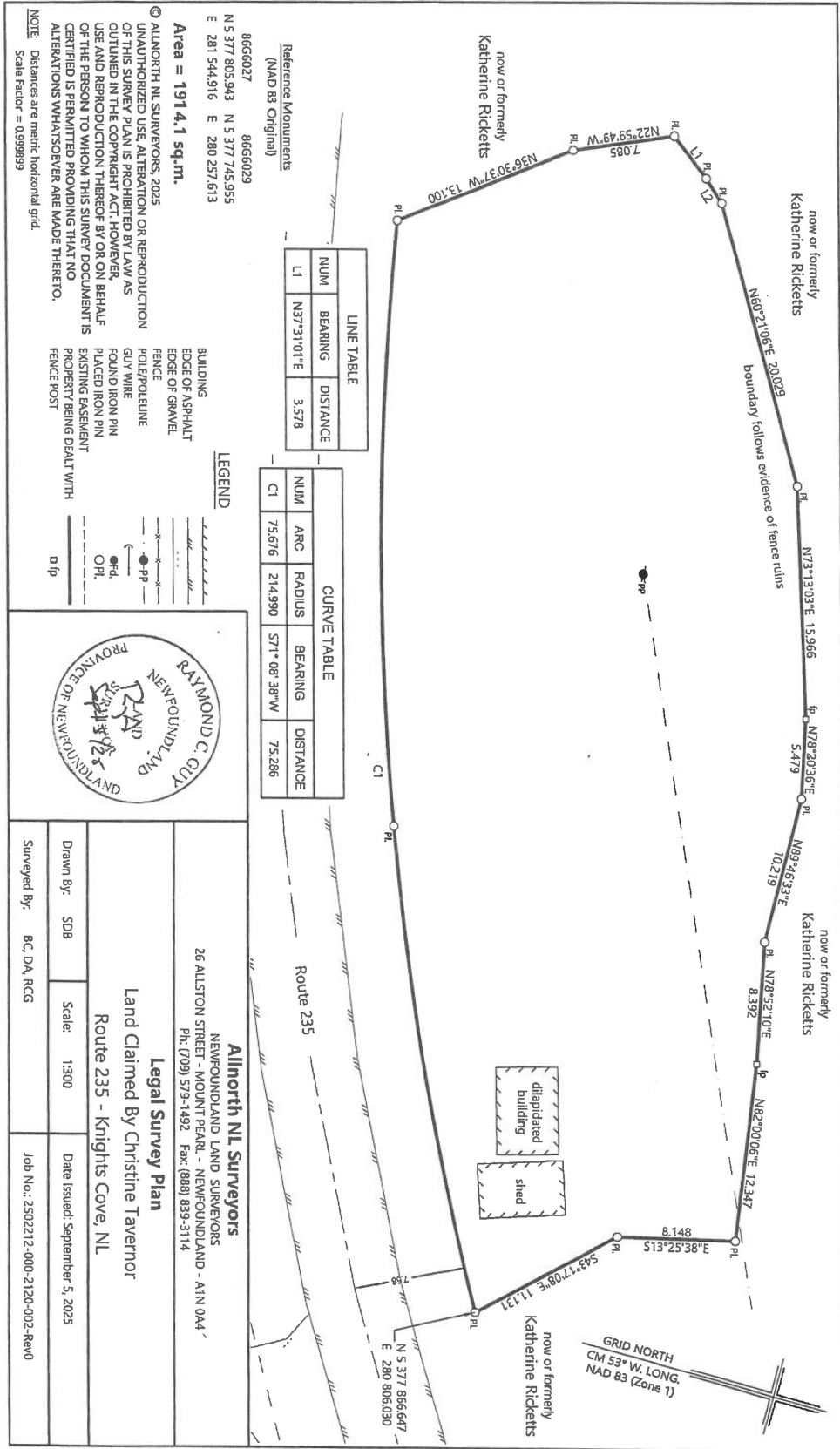
THENCE South 13° 25'38" East, 8.148 metres;

THENCE South 43° 17'08" East, 11.131 metres, more or less, to the point of commencement and containing an area of 1914.1 square metres, more or less, as shown on the attached plan, Job No. 2502212-000-2120-002-Rev0 dated September 5, 2025.

ALL BEARINGS are grid bearings referred to Grid North. All distances are horizontal grid distances.

© Allnorth NL Surveyors, 2025

SCHEDULE "D"



**SCHEDULE "E"**

Allnorth NL Surveyors  
Newfoundland Land Surveyors

August 6, 2025  
Job No. 2502212-000-2120-001-Rev0

**DESCRIPTION**

Route 235 Knights Cove, NL

ALL that piece or parcel of land situate and being on the Southeastern side of Route 235, at Knights Cove, Newfoundland and Labrador and being bounded and abutted as follows, that is to say:

BEGINNING at a point Southeast of Route 235, said point having coordinates of North 5 377 908.161 metres and East 280 898.769 metres in the Modified Three Degree Transverse Mercator Projection [NAD83 Original] for the province of Newfoundland and Labrador, Zone One;

THENCE running along the Southeastern limit of Route 235, North 70° 11'30" East, 38.578 metres;

THENCE turning and running along Crown Land, South 12° 49'01" East, 9.859 metres;

THENCE South 03° 55'40" East, 19.255 metres;

THENCE South 10° 11'19" West, 12.347 metres;

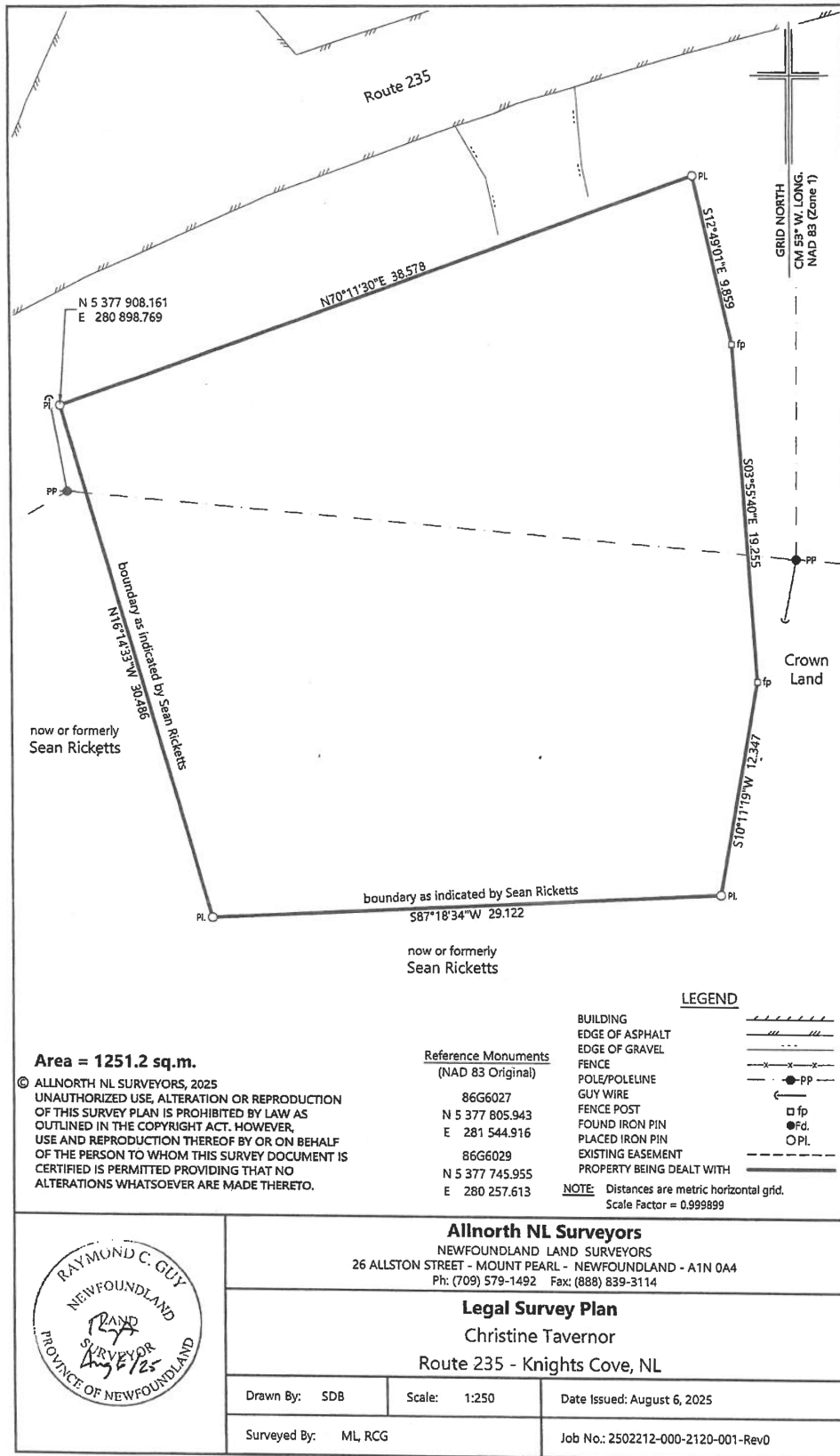
THENCE turning and running along the land now or formerly of Sean Ricketts, South 87° 18'34" West, 29.122 metres;

THENCE North 16° 14'33" West, 30.486 metres, more or less, to the point of commencement and containing an area of 1251.2 square metres, more or less, as shown on the attached plan, Job No. 2502212-000-2120-001-Rev0 dated August 6, 2025.

ALL BEARINGS are grid bearings referred to Grid North. All distances are horizontal grid distances.

© Allnorth NL Surveyors, 2025

SCHEDULE "F"



**2026 06G 0040**  
**IN THE SUPREME COURT OF**  
**NEWFOUNDLAND AND LABRADOR**  
**(GENERAL DIVISION)**

Tel: (709) 466-2641  
 Fax: (709) 466-7109

**SCHEDULE "A"**

NOTICE OF APPLICATION under the *Quieting of Titles Act*, RSNL1990 cQ-3.

ALL THAT piece or parcel of land situate and being at Bishop's Falls. abutted and bounded as follows. that is to say:

NOTICE IS HEREBY given to all parties that GRANT MILLS and CHARMAINE KING, of the Town of Bishop's Falls, in the Province of Newfoundland and Labrador, has applied to the Supreme Court, General Division, Grand Bank, to have title to all that piece or parcel of property situate at the Town of Bishops Falls, in the Province of Newfoundland and Labrador, which property is more particularly described in Schedule "A" hereto annexed and shown in Schedule "B" hereto annexed.

BEGINNING at a survey marker on the Northerly limit of K of C Road, the said point having co-ordinates of North 5,430,550.332 metres and East 341,743.454 metres;

ALL BEARINGS aforementioned, for which GRANT MILLS and CHARMAINE KING claims to be the owner investigated and for a Declaration that they are the absolute owners in fee simple in possession and the said GRANT MILLS and CHARMAINE KING has been ordered to publish this Notice of Application as required by the above named Act.

THENCE running along the aforesaid Northerly limit of K of C Road to a survey marker which is distant sixty-six decimal two four eight (66.248) metres as measured on a bearing of South seventy-two degrees forty-one minutes, thirty-nine seconds West (S 72° 41' 39" W) from the last mentioned survey marker;

THENCE running along the easterly limit of K of C Road to a survey marker which is distant twenty-five decimal nine eight three (25.983) metres as measured on a bearing of North twenty degrees forty-four minutes thirty-eight seconds West (N 20° 44' 38" W) from the last mentioned survey marker;

ALL PERSONS having title adverse to the said title claimed by the said GRANT MILLS and CHARMAINE KING shall file in the Registry of the Supreme Court of Newfoundland and Labrador, Grand Bank, particulars of such adverse claim and serve the same together with an Affidavit verifying same on the undersigned Solicitors for the Petitioner on or before the 17<sup>th</sup> day of June, 2026, after which date no party having any claim shall be permitted to file the same or to be heard except by special leave of the Court and subject to such conditions as the Court may deem just.

THENCE running along the Southeasterly limit of K of C Road to a survey marker which is distant one hundred twenty-three decimal four nine four (123.494) metres as measured on a bearing of North forty-five degrees thirteen minutes fifty-five seconds East (N 45° 13' 55" E) from the last mentioned survey marker;

ALL SUCH adverse claims shall be investigated then in such manner as the Supreme Court of Newfoundland and Labrador, Grand Bank, may direct.

THENCE running by land granted by the Crown to J. W. Altken registered in the Registry of Crown Titles as Volume 92 Folio 32 (or Assigns) South thirty-one degrees thirty-six minutes forty-eight seconds East (S 31° 36' 48" E) twenty-two decimal nine seven nine (22.979) metres to a survey marker;

DATED AT Clarenville, in the Province of Newfoundland and Labrador, this 6<sup>th</sup> day of March, 2026.

THENCE running by land of Grant Mills Civic No. 9 K of C Road South fifty-eight degrees twenty-three minutes zero five-seconds West (S 58° 23' 05" W) sixty- decimal nine six zero (60.960) metres to a survey marker;

MILLS PITTMAN & TWYNE  
 Solicitors for the Applicant  
 PER: GREGORY J. FRENCH

THENCE South thirty-one degrees thirty-six minutes forty-eight seconds East (S 31° 36' 48" E) forty-seven decimal zero one two (47.012) metres, more or less, to the point of beginning and being more particularly shown and delineated on the attached plan;

ADDRESS FOR SERVICE:  
 111 Manitoba Drive  
 Suite 201  
 Clarenville, NL A5A 1K2

The above described piece or parcel of land contains an area of zero decimal three seven zero (0.370) hectares, more or less;



**LANDS ACT****NOTICE OF INTENT, SECTION 7  
LANDS ACT, SNL1991 c36 AS AMENDED**

NOTICE IS HEREBY given that an application has been made to the Department of Forestry, Agriculture and Lands Branch, to acquire title, pursuant to section 7(2.1) (a) of the said Act, to that piece of Crown lands situated within 15 metres of the waters of Gulf of St. Lawrence and unnamed water bodies between local service district of Black Duck Cove to Blue Cove, for the purpose of a hiking trail.

The application may intrude on the 15 metre shoreline of the above mentioned water body(s) in various locations. For a detailed map, please see website: <http://www.flr.gov.nl.ca/lands/sec7notifications.html>.

Please note: It may take up to five (5) days from the date of application for details to appear on the website. Any person wishing to object to the application must file the objection in writing with reasons, within 30 days from the publication of notice on the Department of Forestry, Agriculture and Lands website, Crown Lands, <https://www.flr.gov.nl.ca/lands/index.html>, to the Minister of Department of Forestry, Agriculture and Lands by mail or email to the nearest Regional Lands Office:

- Eastern Regional Lands Office, P.O. Box 8700, Howley Building, Higgins Line, St. John's, NL, A1B 4J6 Email: [easternlandsoffice@gov.nl.ca](mailto:easternlandsoffice@gov.nl.ca)
- Central Regional Lands Office, P.O. Box 2222, Gander, NL, A1V 2N9  
Email: [centrallandsoffice@gov.nl.ca](mailto:centrallandsoffice@gov.nl.ca)
- Western Regional Lands Office, P.O. Box 2006, Sir Richard Squires Building, Corner Brook, NL, A2H 6J8 Email: [westernregionlands@gov.nl.ca](mailto:westernregionlands@gov.nl.ca)
- Labrador Regional Lands Office, P.O. Box 3014, Station "B", Happy Valley-Goose Bay, NL, A0P 1E0  
Email: [labradorlandsoffice@gov.nl.ca](mailto:labradorlandsoffice@gov.nl.ca)

(DISCLAIMER: *The Newfoundland and Labrador Gazette* publishes a NOTICE OF INTENT as received from the Applicant and takes no responsibility for errors or omissions in the property being more particularly described.)

May 15

**NOTICE OF INTENT, SECTION 7  
LANDS ACT, SNL1991 c36 AS AMENDED**

NOTICE IS HEREBY given that an application has been made to the Department of Forestry, Agriculture and Lands Branch, to acquire title, pursuant to section 7(2.1) (a) of the said Act, to that piece of Crown lands situated within 15 metres of the waters of New Harbour, for the purpose of a wharf, boathouse and slipway.

The application may intrude on the 15 metre shoreline of the above mentioned water body(s) in various locations. For a detailed map, please see website: <http://www.flr.gov.nl.ca/lands/sec7notifications.html>.

Please note: It may take up to five (5) days from the date of application for details to appear on the website. Any person wishing to object to the application must file the objection in writing with reasons, within 30 days from the publication of notice on the Department of Forestry, Agriculture and Lands website, Crown Lands, <https://www.flr.gov.nl.ca/lands/index.html>, to the Minister of Department of Forestry, Agriculture and Lands by mail or email to the nearest Regional Lands Office:

- Eastern Regional Lands Office, P.O. Box 8700, Howley Building, Higgins Line, St. John's, NL, A1B 4J6 Email: [easternlandsoffice@gov.nl.ca](mailto:easternlandsoffice@gov.nl.ca)
- Central Regional Lands Office, P.O. Box 2222, Gander, NL, A1V 2N9  
Email: [centrallandsoffice@gov.nl.ca](mailto:centrallandsoffice@gov.nl.ca)
- Western Regional Lands Office, P.O. Box 2006, Sir Richard Squires Building, Corner Brook, NL, A2H 6J8 Email: [westernregionlands@gov.nl.ca](mailto:westernregionlands@gov.nl.ca)
- Labrador Regional Lands Office, P.O. Box 3014, Station "B", Happy Valley-Goose Bay, NL, A0P 1E0  
Email: [labradorlandsoffice@gov.nl.ca](mailto:labradorlandsoffice@gov.nl.ca)

(DISCLAIMER: *The Newfoundland and Labrador Gazette* publishes a NOTICE OF INTENT as received from the Applicant and takes no responsibility for errors or omissions in the property being more particularly described.)

May 15

**NOTICE OF INTENT, SECTION 7  
LANDS ACT, SNL1991 c36 AS AMENDED**

NOTICE IS HEREBY given that an application has been made to the Department of Forestry, Agriculture and Lands Branch, to acquire title, pursuant to section 7(2.1) (a) of the said Act, to that piece of Crown lands

situated within 15 metres of the waters of Quirpon Harbour, for the purpose of a shed/boathouse with a stage and wharf.

The application may intrude on the 15 metre shoreline of the above mentioned water body(s) in various locations. For a detailed map, please see website: <http://www.flr.gov.nl.ca/lands/sec7notifications.html>.

Please note: It may take up to five (5) days from the date of application for details to appear on the website. Any person wishing to object to the application must file the objection in writing with reasons, within 30 days from the publication of notice on the Department of Forestry, Agriculture and Lands website, Crown Lands, <https://www.flr.gov.nl.ca/lands/index.html>, to the Minister of Department of Forestry, Agriculture and Lands by mail or email to the nearest Regional Lands Office:

- Eastern Regional Lands Office, P.O. Box 8700, Howley Building, Higgins Line, St. John's, NL, A1B 4J6 Email: [easternlandsoffice@gov.nl.ca](mailto:easternlandsoffice@gov.nl.ca)
- Central Regional Lands Office, P.O. Box 2222, Gander, NL, A1V 2N9 Email: [centrallandsoffice@gov.nl.ca](mailto:centrallandsoffice@gov.nl.ca)
- Western Regional Lands Office, P.O. Box 2006, Sir Richard Squires Building, Corner Brook, NL, A2H 6J8 Email: [westernregionlands@gov.nl.ca](mailto:westernregionlands@gov.nl.ca)
- Labrador Regional Lands Office, P.O. Box 3014, Station "B", Happy Valley-Goose Bay, NL, A0P 1E0 Email: [labradorlandsoffice@gov.nl.ca](mailto:labradorlandsoffice@gov.nl.ca)

(DISCLAIMER: *The Newfoundland and Labrador Gazette* publishes a NOTICE OF INTENT as received from the Applicant and takes no responsibility for errors or omissions in the property being more particularly described.)

May 15

### TRUSTEE ACT

### ESTATE NOTICE

IN THE ESTATE of LAURA HERSILIA BAKER, Late of St. John's, Newfoundland and Labrador, Gentlewoman, Widowed, Deceased, who died on or about the 17<sup>th</sup> day of December, 2025.

ALL PERSONS claiming to be creditors or who have any claims or demands upon or affecting the Estate of LAURA HERSILIA BAKER, Late of the City of St. John's, in the Province aforesaid, Gentlewoman, Widowed, Deceased, are hereby requested to send

particulars therein in writing, duly attested, to Olga McWilliam Benson of Cox & Palmer, Solicitors for the Estate of the Deceased, on or before the 15<sup>th</sup> day of May, 2026, after which date the Administrator will proceed to distribute the said estate, having regard only to the claims of which it shall then have had notice.

DATED at the City of St. John's, in the Province of Newfoundland and Labrador, this 6<sup>th</sup> day of April, 2026.

COX & PALMER  
Solicitors for the Estate of  
LAURA HERSILIA BAKER  
PER: OLGA MCWILLIAM BENSON

### ADDRESS FOR SERVICE:

Suite 1100, Scotia Centre  
235 Water Street  
St. John's, NL A1C 1B6

Tel: (709) 570-7244

Fax: (709) 738-7999

April 24, May 1, 8 & 15

### ESTATE NOTICE

IN THE ESTATE of PAUL J. CÔTÉ, Late of Stephenville, in the Province of Newfoundland and Labrador, Deceased: December 12, 2024.

ALL PERSONS claiming to be creditors of, or who have any claims or demands either as beneficiaries or next-of-kin (by blood, legal adoption or marriage), upon or affecting the Estate of PAUL J. CÔTÉ, Retired, Late of Stephenville, in the Province of Newfoundland and Labrador, Deceased, are hereby requested to send the particulars thereof in writing, duly attested, to the undersigned Solicitor for the Administrator of the Estate on or before the 15<sup>th</sup> day of June, 2026, after which date the said Administrator will proceed to distribute the said Estate having regard only to the claims to which she shall then have had notice.

DATED at Stephenville, Newfoundland and Labrador this 11<sup>th</sup> day of May, 2026.

ROXANNE PIKE LAW OFFICE  
Solicitor for the Administrator  
PER: ROXANNE PIKE

ADDRESS FOR SERVICE:  
 P.O. Box 272  
 43 Main Street  
 Stephenville, NL A2N 2Z4

Tel: (709) 643-6436  
 Fax: (709) 643-9343

May 15

### ESTATE NOTICE

IN THE MATTER OF the Estate of SUSAN FELSBURG, Late of Happy Valley - Goose Bay, in the Province of Newfoundland and Labrador, Homemaker, Widow, Deceased.

ALL PERSONS claiming to be creditors or who have any claims or demands upon or affecting the Estate of SUSAN FELSBURG, Late of Happy Valley- Goose Bay, in the Province of Newfoundland and Labrador, Deceased, are hereby requested to send particulars therein in writing, duly attested, to Melissa Saunders, of Saunders Collins & Loeb Law, 365 Duckworth Street, St. John's, NL A1C 5H5, Solicitors for the Estate of the Deceased, on or before June 1, 2026, after which date the Executor will proceed to distribute the said estate, having regard only to the claims of which it shall then have had notice.

DATED at St. John's, in the Province of Newfoundland and Labrador, this 23<sup>rd</sup> day of April, 2026.

SAUNDERS COLLINS & LOEB LAW  
 Solicitors for the Estate of  
 SUSAN FELSBURG  
 PER: MELISSA SAUNDERS

ADDRESS FOR SERVICE:  
 365 Duckworth Street  
 P.O. Box 8, Stn C  
 St. John's, NL A1C 5H5

Tel: (709) 725-5574

May 1, 8 & 15

### ESTATE NOTICE

IN THE MATTER OF the Estate of ANTHONY MOORES, Late of the Town of Carbonear, in the Province of Newfoundland and Labrador, Deceased.

ALL PERSONS claiming to be creditors of, or who have any claims or demands either as beneficiaries or next-of-kin (by blood, legal adoption or marriage) upon or affecting, the Estate of ANTHONY

MOORES, Gentleman, who died at the City of St. John's, NL on or about the 17<sup>th</sup> day of October, 2025 are hereby requested to send particulars thereof in writing, duly attested, to: Carolyn Bugo, Executrix of the Estate, c/o William O'Keefe Law, 1973 Topsail Road, Paradise, NL A1L 1Z4.

Particulars will be received by Carolyn Bugo, as Executor of the Estate and Effects of ANTHONY MOORES, on or before July 1, 2026, after which date, the said Executor will proceed to distribute the Estate having regard only to the claims of which he then shall have had notice.

DATED at the Town of Paradise, in the Province of Newfoundland and Labrador, this 8<sup>th</sup> day of May, 2026.

WILLIAM O'KEEFE LAW  
 Executrix of the Estate of  
 ANTHONY MOORES  
 PER: CAROLYN BUGO

ADDRESS FOR SERVICE:  
 c/o William O'Keefe Law  
 1973 Topsail Road  
 Paradise, NL A1L 1Z4

Ph: 709-782-6400  
 Email: [iquilty@williamokeefelaw.ca](mailto:iquilty@williamokeefelaw.ca)

May 15

### ESTATE NOTICE

IN THE MATTER OF the Estate of TOBIAS JAMES WHITE, Late of the City of Corner Brook, in the Province of Newfoundland and Labrador, Deceased, who died on or about the 1<sup>st</sup> day of April, 2025.

ALL PERSONS claiming to be creditors of or who have any claims or demands upon or affecting the Estate of TOBIAS JAMES WHITE, who died in the City of Corner Brook, in the Province aforesaid, are hereby requested to send particulars therein in writing, duly attested, to Donita Hann, Executrix, on or before the 17<sup>th</sup> day of June, 2026, after which date the Executrix will proceed to distribute the said estate, having regard only to the claims of which she shall then have had notice.

DATED at Stephenville, this 7<sup>th</sup> day of May, 2026.

Executrix of the Estate of  
 TOBIAS JAMES WHITE  
 PER: DONITA HANN

ADDRESS FOR SERVICE:

20 Bruce Blvd.

Stephenville, NL A2N 3R6

May 15

---

---





# The Newfoundland and Labrador Gazette

PART II  
SUBORDINATE LEGISLATION  
FILED UNDER THE STATUTES AND SUBORDINATE LEGISLATION ACT

---

Vol. 101

ST. JOHN'S, FRIDAY, MAY 15, 2026

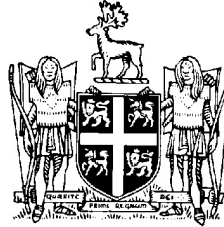
No. 20

---

NEWFOUNDLAND AND LABRADOR  
REGULATIONS

NLR 18/26  
NLR 19/26





## NEWFOUNDLAND AND LABRADOR REGULATION 18/26

*Low Income Tax Reduction Regulations for the 2025 and 2026  
Taxation Years  
under the  
Income Tax Act, 2000  
(O.C.2026-093)*

*(Filed May 14, 2026)*

Under the authority of sections 21.1 and 68 of the *Income Tax Act, 2000*, the Lieutenant-Governor in Council makes the following regulations.

Dated at St. John's, May 11, 2026.

Karen Stone KC  
Clerk of the Executive Council

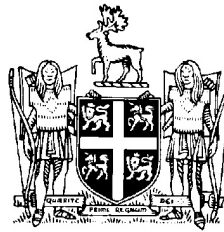
### REGULATIONS

#### *Analysis*

- |                                     |                 |
|-------------------------------------|-----------------|
| 1. Short title                      | 4. Repeal       |
| 2. Definition                       | 5. Commencement |
| 3. Low income tax reduction amounts |                 |

Short title	<b>1.</b> These regulations may be cited as the <i>Low Income Tax Reduction Regulations for the 2025 and 2026 Taxation Years</i> .
Definition	<b>2.</b> In these regulations, "Act" means the <i>Income Tax Act, 2000</i> .
Low income tax reduction amounts	<b>3.</b> For the purpose of the Act,  (a) for the 2025 taxation year,  (i) the amount referred to in paragraph 21.1(2.1)(a) of the Act is \$997, and  (ii) the amount referred to in paragraph 21.1(2.1)(b) of the Act is \$557; and  (b) for the 2026 taxation year,  (i) the amount referred to in paragraph 21.1(2.1)(a) of the Act is \$842, and  (ii) the amount referred to in paragraph 21.1(2.1)(b) of the Act is \$563.
Repeal	<b>4.</b> The <i>Low Income Tax Reduction Regulations for the 2024 Taxation Year, Newfoundland and Labrador Regulation 60/24</i> , are repealed.
Commencement	<b>5. (1)</b> These regulations, except for paragraph 3(b), are considered to have come into force on January 1, 2025.  <b>(2)</b> Paragraph 3(b) is considered to have come into force on January 1, 2026.

©King's Printer



**NEWFOUNDLAND AND LABRADOR  
REGULATION 19/26**

*Pension Benefits Act Regulations (Amendment)*  
under the  
*Pension Benefits Act, 1997*  
(O.C. 2026-094)

*(Filed May 11, 2026)*

Under the authority of section 78 of the *Pension Benefits Act, 1997*, the Lieutenant-Governor in Council makes the following regulations.

Dated at St. John's, May 11, 2026.

Karen Stone KC  
Clerk of the Executive Council

**REGULATIONS**

*Analysis*

- |                                |                           |
|--------------------------------|---------------------------|
| 1. S.2 Amdt.<br>Interpretation | 2. S.15 Amdt.<br>Transfer |
|--------------------------------|---------------------------|

NLR 114/96  
as amended

**1. (1) Paragraph 2(1)(v) of the *Pension Benefits Act Regulations* is repealed.**

**(2) Paragraph 2(1)(y) of the regulations is repealed.**

**2. (1) Subsection 15(2) of the regulations is repealed and the following substituted:**

(2) The transfer value of a pension benefit as of a given date shall be determined by multiplying the commuted value, as determined in accordance with section 14, by the lesser of 1.00 and the most recently determined solvency ratio.

**(2) Subsection 15(4) of the regulations is amended by deleting the words and number "equal to 1.00" and substituting the words and number "equal to or greater than 1.00".**

©King's Printer

## Index

### PART I

City of Corner Brook Act – Notice.....	159
Lands Act – Notices.....	180
Machanics Lien Act – Notice .....	161
Minerals Act – Notice.....	153
Quieting of Titles Act – Notices.....	161
Trustee Act – Notices .....	181
Urban And Rural Planning Act. 2000 – Notices .....	159

### PART II

#### CONTINUING INDEX OF SUBORDINATE LEGISLATION

<b>Title of Act and Subordinate Legislation made under that Act</b>	<b>CNLR or NL Reg.</b>	<b>Amendment</b>	<b>NL Gazette Date &amp; Page No.</b>
<b>Income Tax Act, 2000</b>			
Low Income Tax Reduction Regulations for the 2025 and 2026 Taxation Years	NLR 18/26	R&S NLR 60/24	May 15/26 p. 121
<b>Pension Benefits Act, 1997</b>			
Pension Benefits Act Regulations (Amendment)	NLR 19/26	Amends NLR 114/96 S.2 Amdt. S.15 Amdt.	May 15/26 p. 123

*The Newfoundland and Labrador Gazette* is published from the Office of the King's Printer.

Copy for publication must be received by **Friday, 4:30 p.m.**, seven days before publication date to ensure inclusion in next issue.

Advertisements must be submitted in either PDF format or as a MSWord file. When this is not possible, advertisements must be either, typewritten or printed legibly, separate from covering letter. Number of insertions required must be stated and the names of all signing officers typewritten or printed.

Copy may be mailed to the address below, faxed to (709) 729-1900 or emailed to [kingsprinter@gov.nl.ca](mailto:kingsprinter@gov.nl.ca).

Subscription rate for *The Newfoundland and Labrador Gazette* is \$144.38 for 52 weeks plus 15% HST (\$166.04). Weekly issues, \$3.47 per copy, plus 15% HST (\$3.99) payable in advance.

All cheques, money orders, etc., should be made payable to THE NEWFOUNDLAND EXCHEQUER ACCOUNT and all correspondence should be addressed to: Office of the King's Printer, P. O. Box 8700, Ground Floor, East Block, Confederation Building, St. John's, NL A1B 4J6, Telephone: (709) 729-3649, Fax: (709) 729-1900.

**Web Site:** [www.gov.nl.ca/dgsnl/printer/gazette/weekly-issues/](http://www.gov.nl.ca/dgsnl/printer/gazette/weekly-issues/)

*The Newfoundland and Labrador Gazette*

Advertising Rates

Prices effective July 1, 2016

<b>Notices</b>	<b>Rate</b>	<b>15%</b>	<b>HST Total</b>
Lands Act - Notice of Intent - 1 week	\$31.13	\$4.67	\$35.80
Motor Carrier Act - Notice - 1 week	\$39.90	\$5.99	\$45.89
Trustee Act - Estate Notice - 1 week	\$34.65	\$5.20	\$39.85
Trustee Act - Estate Notice - 2 weeks	\$62.37	\$9.36	\$71.73
Trustee Act - Estate Notice - 3 weeks	\$91.25	\$13.69	\$104.94
Trustee Act - Estate Notice - 4 weeks	\$118.97	\$17.85	\$136.82

All other public notices required by law to be published in *The Newfoundland and Labrador Gazette*, eg., Corporations Act, Municipalities Act, Quieting of Titles Act, Urban and Rural Planning Act, etc., are priced according to size: for Single Column \$3.47 per cm or Double Column \$6.93 per cm, plus 15% HST.

For quotes please contact the Office of the King's Printer [kingsprinter@gov.nl.ca](mailto:kingsprinter@gov.nl.ca)

Government Information Product  
Publication Rate Mail  
G.S.T. # R107442683