



The Newfoundland and Labrador Gazette

PART I
PUBLISHED BY AUTHORITY

Vol. 101

ST. JOHN'S, FRIDAY, MAY 29, 2026

No. 22

MINERAL ACT

NOTICE

Published in accordance with section 62 of CNLR 1143/96 under the *Mineral Act*, RSNL1990 cM-12 as amended.

Mineral rights to the following mineral licenses have reverted to the Crown:

Mineral Licence 034148M
held by Shoreline Exploration Inc.
on map sheet 01M/12

Mineral Licence 034189M
held by Shoreline Exploration Inc.
on map sheet 01M/12

Mineral Licence 034190M
held by Shoreline Exploration Inc.
on map sheet 01M/12

Mineral Licence 034196M
held by Shoreline Exploration Inc.
on map sheet 01M/12

Mineral Licence 034205M
held by Shoreline Exploration Inc.
on map sheet 01M/12

Mineral Licence 034303M
held by Stephen Stockley
Agriculture and
Fabrication Inc.
on map sheet 13L/05

Mineral Licence 034311M
held by Stephen Stockley
Agriculture and
Fabrication Inc.
on map sheet 13L/05

Mineral Licence 034312M
held by Stephen Stockley
Agriculture and
Fabrication Inc.
on map sheet 13L/05

Mineral Licence 034313M
held by Stephen Stockley
Agriculture and
Fabrication Inc.
on map sheet 13L/05

Mineral Licence held by on map sheet	034476M Kennedy, Chad 11P/11	A portion of licence held by on map sheet more particularly described in an application on file at Dept. of Energy and Mines	040708M Unity Resources Inc. 13J/14
Mineral Licence held by on map sheet	034680M Shoreline Exploration Inc. 01M/12	A portion of licence held by on map sheet more particularly described in an application on file at Dept. of Energy and Mines	035400M Paradigm Minerals Inc. 13J/14
Mineral Licence held by on map sheet	034737M Snook, Robert 02D/11, 02D/14	A portion of licence held by on map sheet more particularly described in an application on file at Dept. of Energy and Mines	035401M Paradigm Minerals Inc. 13J/15
Mineral Licence held by on map sheet	034799M Stockley, Mark 12G/01	A portion of licence held by on map sheet more particularly described in an application on file at Dept. of Energy and Mines	035402M Paradigm Minerals Inc. 13J/10
Mineral Licence held by on map sheet	035125M Rogers, Stephen 02C/04	Mineral Licence held by on map sheet	035485M Stockley, Mark 12A/09
Mineral Licence held by on map sheet	038621M McCallum, Neil 12B/02, 12B/07	A portion of licence held by on map sheet more particularly described in an application on file at Dept. of Energy and Mines	035564M Zonte Metals Inc. 01M/10, 01M/15
Mineral Licence held by on map sheet	035299M Stephen Stockley Agriculture and Fabrication Inc. 23B/15	A portion of licence held by on map sheet more particularly described in an application on file at Dept. of Energy and Mines	040239M Zonte Metals Inc. 01M/10, 01M/15
Mineral Licence held by on map sheet	035300M Stephen Stockley Agriculture and Fabrication Inc. 23B/15	Mineral Licence held by on map sheet	036658M First Atlantic Nickel Corp. 02M/05
Mineral Licence held by on map sheet	038622M McCallum, Neil 12B/02	Mineral Licence held by on map sheet	036659M First Atlantic Nickel Corp. 02M/05
Mineral Licence held by on map sheet	038623M McCallum, Neil 12B/02	Mineral Licence held by on map sheet	036660M First Atlantic Nickel Corp. 02M/05
Mineral Licence held by on map sheet	035356M Hicks, Darrin 01M/14	Mineral Licence held by on map sheet	036661M First Atlantic Nickel Corp. 02M/05
A portion of licence held by on map sheet more particularly described in an application on file at Dept. of Energy and Mines	035398M Unity Resources Inc. 13J/14	Mineral Licence held by on map sheet	

Mineral Licence held by on map sheet	036702M Butler, Roland 02E/03	Mineral Licence held by on map sheet	037056M Keeping, Gregory 12H/09, 12H/16
Mineral Licence held by on map sheet	036711M Sans Peur Exploration Services Inc. 12H/09	Mineral Licence held by on map sheet	037070M 98375 NEWFOUNDLAND & LABRADOR INC. 02D/14
Mineral Licence held by on map sheet	036819M Sans Peur Exploration Services Inc. 12H/09	Mineral Licence held by on map sheet	037081M McLean, Clyde 13L/03
Mineral Licence held by on map sheet	036853M Rocky Shore Metals Ltd. 02D/10, 02D/11	A portion of licence held by on map sheet more particularly described in an application on file at Dept. of Energy and Mines	037104M Paradigm Minerals Inc. 13J/15
Mineral Licence held by on map sheet	036856M Woodman, Wayne 02D/08	A portion of licence held by on map sheet more particularly described in an application on file at Dept. of Energy and Mines	037241M D3 Exploration Ltd. 12A/10
Mineral Licence held by on map sheet	039877M Quinlan, Marilyn 13F/04, 13F/03	A portion of licence held by on map sheet more particularly described in an application on file at Dept. of Energy and Mines	039214M Mercer, George J. 12A/15
Mineral Licence held by on map sheet	036862M Stephen Stockley Agriculture and Fabrication Inc. 02D/14, 02E/03	A portion of licence held by on map sheet more particularly described in an application on file at Dept. of Energy and Mines	037624M Hicks, Natalie 01M/13
Mineral Licence held by on map sheet	036863M Boulos, Penny 02E/02	A portion of licence held by on map sheet more particularly described in an application on file at Dept. of Energy and Mines	040702M Hicks, Natalie 01M/13
Mineral Licence held by on map sheet	036873M Stephen Stockley Agriculture and Fabrication Inc. 02E/02	A portion of licence held by on map sheet more particularly described in an application on file at Dept. of Energy and Mines	038308M Quest Inc. 13E/06, 13E/07
Mineral Licence held by on map sheet	036875M 98375 NEWFOUNDLAND & LABRADOR INC. 02E/04	Mineral Licence held by on map sheet	038327M Cape Ray Mining Limited 11P/15, 11P/14
Mineral Licence held by on map sheet	036877M 98375 NEWFOUNDLAND & LABRADOR INC. 02E/04	Mineral Licence held by on map sheet	038340M Oake, Jeffrey 02E/01
Mineral Licence held by on map sheet	037046M Pike, Barbara 01M/10		

Mineral Licence held by on map sheet	038343M Oake, Jeffrey 02D/09	Mineral Licence held by on map sheet	038494M Hicks, Darrin 12A/15
Mineral Licence held by on map sheet	038428M Labrador Gold Corp. 12I/03	Mineral Licence held by on map sheet	038495M Nekado Capital Canada Corp. 12H/14
Mineral Licence held by on map sheet	038429M Labrador Gold Corp. 12I/03	Mineral Licence held by on map sheet	038501M Shoreline Exploration Inc. 13F/10, 13F/07
Mineral Licence held by on map sheet	038437M Hicks, David 11P/11	Mineral Licence held by on map sheet	038502M Shoreline Exploration Inc. 13F/10
Mineral Licence held by on map sheet	038448M Alyward, Eric 02D/14	Mineral Licence held by on map sheet	038503M Shoreline Exploration Inc. 13F/10
Mineral Licence held by on map sheet	038451M Hussey, Lester 02D/16	Mineral Licence held by on map sheet	038550M Nolan, William 12A/10
Mineral Licence held by on map sheet	038452M Wellman, Chad 13A/03	Mineral Licence held by on map sheet	038551M Benton Resources Inc. 02D/07
Mineral Licence held by on map sheet	038463M Keats, Clayton 02D/08	Mineral Licence held by on map sheet	038552M Keats, Wesley 02E/09
Mineral Licence held by on map sheet	038467M Woodman, Wayne 02D/08	Mineral Licence held by on map sheet	038553M Sheppard, Stephen 02D/01, 02D/08
Mineral Licence held by on map sheet	038472M Shoreline Exploration Inc. 12H/07, 12H/10	Mineral Licence held by on map sheet	038559M Wellman, Chad 13A/03
Mineral Licence held by on map sheet	038473M Hans, Prabhpal 02E/02	Mineral Licence held by on map sheet	038560M Wellman, Chad 12P/15
Mineral Licence held by on map sheet	038486M Stares Contracting Corp. 23J/02	Mineral Licence held by on map sheet	038563M Russell, Gerald Terrance 02E/09
Mineral Licence held by on map sheet	038488M Stares Contracting Corp. 23J/02	Mineral Licence held by on map sheet	038565M Bugden, Kirsten 11O/16
Mineral Licence held by on map sheet	038489M Stares Contracting Corp. 23J/02	Mineral Licence held by on map sheet	038566M Bugden, Alex 11O/09, 11O/16

Mineral Licence held by on map sheet	038567M Bugden, Alex 11O/09	Mineral Licence held by on map sheet	038630M Coady, Craig Gordon 01M/10
Mineral Licence held by on map sheet	038568M Bugden, Alex 11O/09	Mineral Licence held by on map sheet	038631M Coady, Craig Gordon 01M/10
Mineral Licence held by on map sheet	038569M Bugden, Alex 11O/09	Mineral Licence held by on map sheet	038633M Strickland, Barry 12H/08
Mineral Licence held by on map sheet	038570M Bugden, Alex 11O/09	Mineral Licence held by on map sheet	038639M Shoreline Exploration Inc. 12H/07
Mineral Licence held by on map sheet	038571M Bugden, Alex 11O/09	Mineral Licence held by on map sheet	038645M Huebner Thompson, Karen 01L/13
Mineral Licence held by on map sheet	038572M Bugden, Alex 11O/09, 11O/16	Mineral Licence held by on map sheet	038646M Huebner Thompson, Karen 01L/14
Mineral Licence held by on map sheet	038573M Blackmore, Neal 11O/16	Mineral Licence held by on map sheet	038654M Jones, Brian 12A/11
Mineral Licence held by on map sheet	038577M Huebner Thompson, Karen 12G/01	Mineral Licence held by on map sheet	038657M Kelly Jr, Daniel 01M/03
Mineral Licence held by on map sheet	038592M Shoreline Exploration Inc. 13F/10	Mineral Licence held by on map sheet	038688M Tomcod Media Inc. 12A/07
Mineral Licence held by on map sheet	038599M Turf Point Resources Limited 12B/08	Mineral Licence held by on map sheet	038206M Noel, Nathaniel 01M/10
Mineral Licence held by on map sheet	038600M Brake, Spencer 02D/12	Mineral Licence held by on map sheet	038504M Lee, Stephen 12B/09
Mineral Licence held by on map sheet	038601M Brake, Spencer 11P/13, 12A/04	Mineral Licence held by on map sheet	038701M Rogers, Larry 12B/07, 12B/10
Mineral Licence held by on map sheet	038602M Brake, Spencer 12A/04	Mineral Licence held by on map sheet	038702M 1254883 BC LTD. 12A/06
Mineral Licence held by on map sheet	038628M Crane, Edward 01M/10	Mineral Licence held by on map sheet	038703M 1254883 BC LTD. 12A/06, 12A/05

Mineral Licence held by on map sheet	039174M Burry, Leo 02C/12
Mineral Licence held by on map sheet	039175M Burry, Leo 02D/09, 02D/16
Mineral Licence held by on map sheet	039206M Burry, Leo 02C/12
Mineral Licence held by on map sheet	039207M Burry, Leo 02C/12
Mineral Licence held by on map sheet	039209M Burry, Leo 02C/12
Mineral Licence held by on map sheet	039210M Burry, Leo 02C/12
Mineral Licence held by on map sheet	039218M Burry, Leo 02C/12
Mineral Licence held by on map sheet	039219M Burry, Leo 02C/12
Mineral Licence held by on map sheet	039226M Burry, Leo 02C/12
Mineral Licence held by on map sheet	039333M Burry, Leo 02C/12

The lands covered by this notice except for the lands within Exempt Mineral Lands, the Exempt Mineral Lands being described in CNLR 1143/96 and NLR 71/98, 104/98, 97/00, 36/01, 31/04, 78/06, 8/08, 28/09, 5/13, 3/17, 12/22, 76/23 and 34/24, and outlined on 1:50 000 scale digital maps maintained by the Department of Industry, Energy and Technology, will be open for staking after the hour of 9:00 a.m. on the 32nd clear day after the date of this publication.

DEPARTMENT OF ENERGY AND MINES
TRINA ADAMS
Mineral Claims Recorder

May 29

CITY OF ST. JOHN'S ACT



ST. JOHN'S MUNICIPAL COUNCIL NOTICE RESIDENTIAL PROPERTY STANDARDS (AMENDMENT NO. 1-2026) BY-LAW

TAKE NOTICE that the St. John's Municipal Council has enacted the RESIDENTIAL PROPERTY STANDARDS (AMENDMENT NO.1-2026) BY-LAW.

The said By-Law was passed by Council on the 19th day of May, 2026, so as to allow Notices to be posted on the door of the property owner's last known address, and/or on the door of the subject property.

ALL PERSONS who wish to view such the By-Law Regulations or the Residential Property Standard By-Law may view same at the Office of the City Solicitor of the St. John's Municipal Council at City Hall, and any person who wishes to obtain a copy thereof may obtain it at the said office upon the payment of a reasonable charge as established by the St. John's Municipal Council for such copy.

Dated this 22nd day of May, 2026.

CITY OF ST. JOHN'S
Theresa Walsh, City Clerk

May 29

URBAN AND RURAL PLANNING ACT, 2000

NOTICE OF REGISTRATION CITY OF MOUNT PEARL MUNICIPAL PLAN AMENDMENT NO. 27, 2024 & DEVELOPMENT REGULATIONS AMENDMENT NO. 75, 2024

TAKE NOTICE that the CITY OF MOUNT PEARL MUNICIPAL PLAN AMENDMENT NO. 27, 2024 and CITY OF MOUNT PEARL DEVELOPMENT REGULATIONS AMENDMENT NO. 75, 2024 adopted on the 10th day of March 2026 have been registered by the Minister of Municipal and Community Affairs.

IN GENERAL TERMS, the purpose of CITY OF MOUNT PEARL MUNICIPAL PLAN AMENDMENT NO. 27, 2024 is to redesignate land at civic # 912-928 Blackmarsh Road from the Mixed Use Designation to Residential Designation.

IN GENERAL TERMS, the purpose of CITY OF MOUNT PEARL DEVELOPMENT REGULATIONS AMENDMENT NO. 75, 2024 is to rezone to land at civic # 912-928 Blackmarsh Road from the Commercial Mixed (CM) Use Zone to the Apartment (APT) Zone.

THE CITY OF MOUNT PEARL MUNICIPAL PLAN AMENDMENT NO. 27, 2024 and CITY OF MOUNT PEARL DEVELOPMENT REGULATIONS AMENDMENT NO. 75, 2024 come into effect on the day that this notice is published in *The Newfoundland and Labrador Gazette*. Anyone who wishes to inspect a copy of the amendments may do so at the City of Mount Pearl City Hall during regular business hours.

CITY OF MOUNT PEARL
Stephanie Walsh, City Clerk

May 29

**NOTICE OF REGISTRATION
TOWN OF TRAYTOWN
MUNICIPAL PLAN
AMENDMENT NO. 2 AND
DEVELOPMENT REGULATIONS
AMENDMENT NO. 2**

TAKE NOTICE that TRAYTOWN MUNICIPAL PLAN AMENDMENT NO. 2 and DEVELOPMENT REGULATIONS AMENDMENT NO. 2, adopted on the 13th day of April 2026, have been registered by the Minister of Municipal and Community Affairs.

THE PURPOSE of the amendments is to create a protected wellhead area for Town's new municipal wells. The amendment rezones lands currently zoned Rural, Mineral Working, and Residential to Wellhead Protection, and in addition rezones a separate area from Rural to Mineral Working.

THESE AMENDMENTS come into effect on the day that this notice is published in *The Newfoundland and Labrador Gazette*. Anyone who wishes to inspect a copy of the documents may do so at the Traytown Town Office during normal business hours.

TOWN OF TRAYTOWN
Sarah Skinner, Town Clerk

May 29

QUIETING OF TITLES ACT

**2026 06G 0034
IN THE SUPREME COURT OF
NEWFOUNDLAND AND LABRADOR
(GENERAL DIVISION)**

NOTICE OF APPLICATION under the *Quieting of Titles Act*, RSNL1990 cQ-3.

NOTICE IS HEREBY given to all parties that JESSE PEDDLE, of the Community of Barton, in the Province of Newfoundland and Labrador, has applied to the Supreme Court, General Division, Grand Bank, to have title to all that piece or parcel of property situate at the Town of Clarenville, in the Province of Newfoundland and Labrador, which property is more particularly described in Schedule "A" hereto annexed and shown in Schedule "B" hereto annexed.

ALL BEARINGS aforementioned, for which JESSE PEDDLE claims to be the owner investigated and for a Declaration that they are the absolute owners in fee simple in possession and the said JESSE PEDDLE has been ordered to publish this Notice of Application as required by the above named Act.

ALL PERSONS having title adverse to the said title claimed by the said JESSE PEDDLE shall file in the Registry of the Supreme Court of Newfoundland and Labrador, Grand Bank, particulars of such adverse claim and serve the same together with an Affidavit verifying same on the undersigned Solicitors for the Petitioner on or before the 1st day of July, 2026 after which date no party having any claim shall be permitted to file the same or to be heard except by special leave of the Court and subject to such conditions as the Court may deem just.

ALL such adverse claims shall be investigated then in such manner as the Supreme Court of Newfoundland and Labrador, Grand Bank, may direct.

DATED AT Clarenville, in the Province of Newfoundland and Labrador, this 26th day of March.

MILLS PITTMAN TWYNE LAW OFFICES
Solicitors for the Applicant
PER: GREGORY FRENCH

ADDRESS FOR SERVICE:
111 Manitoba Drive, Suite 201
Clarenville, NL A5A 1K2

Tel: (709) 466-2641
Fax: (709) 466-6797

SCHEDULE "A"

JESSE PEDDLE
Clarenville, NL

ALL THAT piece or parcel of land situate and being in the Town of CLARENVILLE, in the Electoral District of Terra Nova abutted and bounded as follows:

THAT IS TO SAY: Beginning at a point on the north western limit of BALBO DRIVE (20 metres wide), the said point having coordinates N 5 340 370.695 metres and E 233 128.441 metres of the Three Degree Modified Transverse Mercator Projection (NAD-83) for the Province of Newfoundland;

THENCE along the said north western limit of BALBO DRIVE along the arc of curve having a radius of two hundred and forty-one decimal seven four zero (241.740) meters to a point, the said point being distant thirty-one decimal seven zero zero (31.700) as measured on a bearing of south thirty-seven degrees forty-three minutes fifty seconds west (S 37-43-50 W) from the last mentioned point;

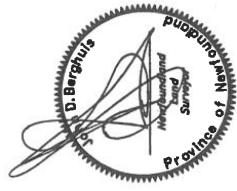
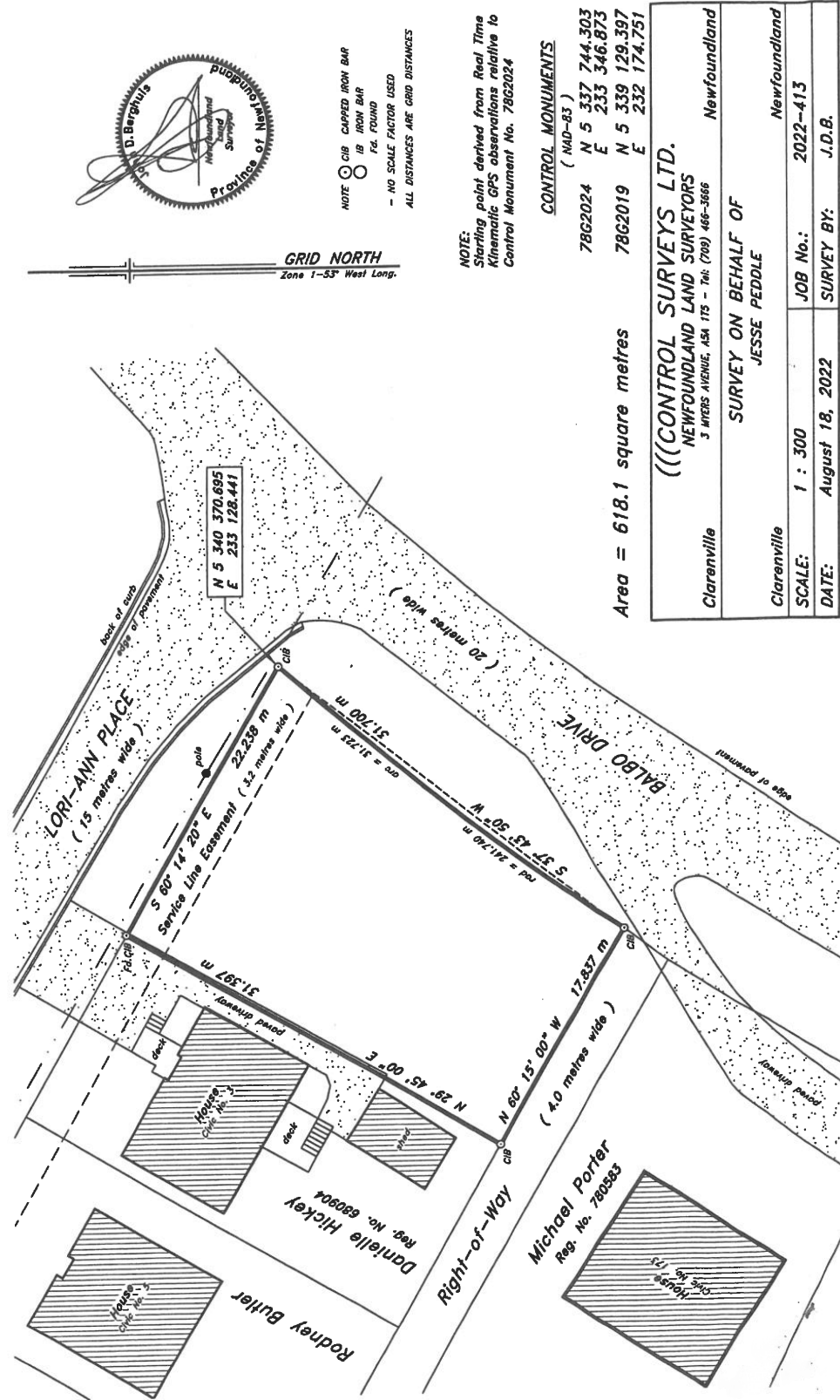
THENCE along the north eastern limit of a Right-of-Way (4.0 metres wide) north sixty degrees fifteen minutes zero zero seconds west (N 60-15-00 W) seventeen decimal eight three seven (17.837) metres;

THENCE by property of Danielle Hickey (Reg. No. 680904) north twenty-nine degrees forty-five minutes zero zero seconds east (N 29-45-00 E) thirty-one decimal three nine seven (31.397) metres;

THENCE along the south western limit of LORIAN PLACE (15 metres wide) south sixty degrees fourteen minutes twenty seconds east (S 60-14-20 E) twenty-two decimal two three eight (22.238) metres, more or less to the point of beginning and containing an area of 618.1 square metres.

ALL BEARINGS refer to the above mentioned Projection. The above described piece or parcel of land is subject to a Service Line Easement (3.0 m wide) extending along the north eastern most boundary of the subject property as shown on the plan hereto attached.

(((CONTROL SURVEYS LTD.



NOTE: CBM CAPPED IRON BAR
IR IRON BAR
FD FOUND
- NO SCALE FACTOR USED
ALL DISTANCES ARE GRID DISTANCES

LANDS ACT**NOTICE OF INTENT, SECTION 7
LANDS ACT, SNL1991 c36 AS AMENDED**

NOTICE IS HEREBY given that an application has been made to the Department of Forestry, Agriculture and Lands Branch, to acquire title, pursuant to section 7(2) (a) of the said Act, to that piece of Crown lands situated within 15 metres of the waters of Atlantic Ocean near Burnt Islands, NL, for the purpose of a parking lot.

The application may intrude on the 15 metre shoreline of the above mentioned water body(s) in various locations. For a detailed map, please see website: <http://www.flr.gov.nl.ca/lands/sec7notifications.html>.

Please note: It may take up to five (5) days from the date of application for details to appear on the website. Any person wishing to object to the application must file the objection in writing with reasons, within 30 days from the publication of notice on the Department of Forestry, Agriculture and Lands website, Crown Lands, <https://www.flr.gov.nl.ca/lands/index.html>, to the Minister of Department of Forestry, Agriculture and Lands by mail or email to the nearest Regional Lands Office:

- Eastern Regional Lands Office, P.O. Box 8700, Howley Building, Higgins Line, St. John's, NL, A1B 4J6 Email: easternlandsoffice@gov.nl.ca
- Central Regional Lands Office, P.O. Box 2222, Gander, NL, A1V 2N9
Email: centrallandsoffice@gov.nl.ca
- Western Regional Lands Office, P.O. Box 2006, Sir Richard Squires Building, Corner Brook, NL, A2H 6J8 Email: westernregionlands@gov.nl.ca
- Labrador Regional Lands Office, P.O. Box 3014, Station "B", Happy Valley-Goose Bay, NL, A0P 1E0
Email: labradorlandsoffice@gov.nl.ca

(DISCLAIMER: *The Newfoundland and Labrador Gazette* publishes a NOTICE OF INTENT as received from the Applicant and takes no responsibility for errors or omissions in the property being more particularly described.)

May 29

**NOTICE OF INTENT, SECTION 7
LANDS ACT, SNL1991 c36 AS AMENDED**

NOTICE IS HEREBY given that an application has been made to the Department of Forestry, Agriculture

and Lands Branch, to acquire title, pursuant to section 7(2.1) (a) of the said Act, to that piece of Crown lands situated within 15 metres of the waters of Burgeo, for the purpose of a hiking/walking trail.

The application may intrude on the 15 metre shoreline of the above mentioned water body(s) in various locations. For a detailed map, please see website: <http://www.flr.gov.nl.ca/lands/sec7notifications.html>.

Please note: It may take up to five (5) days from the date of application for details to appear on the website. Any person wishing to object to the application must file the objection in writing with reasons, within 30 days from the publication of notice on the Department of Forestry, Agriculture and Lands website, Crown Lands, <https://www.flr.gov.nl.ca/lands/index.html>, to the Minister of Department of Forestry, Agriculture and Lands by mail or email to the nearest Regional Lands Office:

- Eastern Regional Lands Office, P.O. Box 8700, Howley Building, Higgins Line, St. John's, NL, A1B 4J6 Email: easternlandsoffice@gov.nl.ca
- Central Regional Lands Office, P.O. Box 2222, Gander, NL, A1V 2N9
Email: centrallandsoffice@gov.nl.ca
- Western Regional Lands Office, P.O. Box 2006, Sir Richard Squires Building, Corner Brook, NL, A2H 6J8 Email: westernregionlands@gov.nl.ca
- Labrador Regional Lands Office, P.O. Box 3014, Station "B", Happy Valley-Goose Bay, NL, A0P 1E0
Email: labradorlandsoffice@gov.nl.ca

(DISCLAIMER: *The Newfoundland and Labrador Gazette* publishes a NOTICE OF INTENT as received from the Applicant and takes no responsibility for errors or omissions in the property being more particularly described.)

May 29

**NOTICE OF INTENT, SECTION 7
LANDS ACT, SNL1991 c36 AS AMENDED**

NOTICE IS HEREBY given that an application has been made to the Department of Forestry, Agriculture and Lands Branch, to acquire title, pursuant to section 7(2) (b) of the said Act, to that piece of Crown lands situated within 15 metres of the waters of unnamed streams/ponds near Cormack, for the purpose of a agricultural development.

The application may intrude on the 15 metre shoreline of the above mentioned water body(s) in various

locations. For a detailed map, please see website: <http://www.flr.gov.nl.ca/lands/sec7notifications.html>.

Please note: It may take up to five (5) days from the date of application for details to appear on the website. Any person wishing to object to the application must file the objection in writing with reasons, within 30 days from the publication of notice on the Department of Forestry, Agriculture and Lands website, Crown Lands, <https://www.flr.gov.nl.ca/lands/index.html>, to the Minister of Department of Forestry, Agriculture and Lands by mail or email to the nearest Regional Lands Office:

- Eastern Regional Lands Office, P.O. Box 8700, Howley Building, Higgins Line, St. John's, NL, A1B 4J6 Email: easternlandsoffice@gov.nl.ca
- Central Regional Lands Office, P.O. Box 2222, Gander, NL, A1V 2N9
Email: centrallandsoffice@gov.nl.ca
- Western Regional Lands Office, P.O. Box 2006, Sir Richard Squires Building, Corner Brook, NL, A2H 6J8 Email: westernregionlands@gov.nl.ca
- Labrador Regional Lands Office, P.O. Box 3014, Station "B", Happy Valley-Goose Bay, NL, A0P 1E0
Email: labradorlandsoffice@gov.nl.ca

(DISCLAIMER: *The Newfoundland and Labrador Gazette* publishes a NOTICE OF INTENT as received from the Applicant and takes no responsibility for errors or omissions in the property being more particularly described.)

May 29

**NOTICE OF INTENT, SECTION 7
LANDS ACT, SNL1991 c36 AS AMENDED**

NOTICE IS HEREBY given that an application has been made to the Department of Forestry, Agriculture and Lands Branch, to acquire title, pursuant to section 7(2.1) (a) of the said Act, to that piece of Crown lands situated within 15 metres of the waters of Cupids Cove, for the purpose of a wharf.

The application may intrude on the 15 metre shoreline of the above mentioned water body(s) in various locations. For a detailed map, please see website: <http://www.flr.gov.nl.ca/lands/sec7notifications.html>.

Please note: It may take up to five (5) days from the date of application for details to appear on the website. Any person wishing to object to the application must file the objection in writing with reasons, within 30

days from the publication of notice on the Department of Forestry, Agriculture and Lands website, Crown Lands, <https://www.flr.gov.nl.ca/lands/index.html>, to the Minister of Department of Forestry, Agriculture and Lands by mail or email to the nearest Regional Lands Office:

- Eastern Regional Lands Office, P.O. Box 8700, Howley Building, Higgins Line, St. John's, NL, A1B 4J6 Email: easternlandsoffice@gov.nl.ca
- Central Regional Lands Office, P.O. Box 2222, Gander, NL, A1V 2N9
Email: centrallandsoffice@gov.nl.ca
- Western Regional Lands Office, P.O. Box 2006, Sir Richard Squires Building, Corner Brook, NL, A2H 6J8 Email: westernregionlands@gov.nl.ca
- Labrador Regional Lands Office, P.O. Box 3014, Station "B", Happy Valley-Goose Bay, NL, A0P 1E0
Email: labradorlandsoffice@gov.nl.ca

(DISCLAIMER: *The Newfoundland and Labrador Gazette* publishes a NOTICE OF INTENT as received from the Applicant and takes no responsibility for errors or omissions in the property being more particularly described.)

May 29

**NOTICE OF INTENT, SECTION 7
LANDS ACT, SNL1991 c36 AS AMENDED**

NOTICE IS HEREBY given that an application has been made to the Department of Forestry, Agriculture and Lands Branch, to acquire title, pursuant to section 7(2.1) (a) of the said Act, to that piece of Crown lands situated within 15 metres of the waters of Jane's Pond walking trail, for the purpose of a walking trail.

The application may intrude on the 15 metre shoreline of the above mentioned water body(s) in various locations. For a detailed map, please see website: <http://www.flr.gov.nl.ca/lands/sec7notifications.html>.

Please note: It may take up to five (5) days from the date of application for details to appear on the website. Any person wishing to object to the application must file the objection in writing with reasons, within 30 days from the publication of notice on the Department of Forestry, Agriculture and Lands website, Crown Lands, <https://www.flr.gov.nl.ca/lands/index.html>, to the Minister of Department of Forestry, Agriculture and Lands by mail or email to the nearest Regional Lands Office:

- Eastern Regional Lands Office, P.O. Box 8700, Howley Building, Higgins Line, St. John's, NL, A1B 4J6 Email: easternlandsoffice@gov.nl.ca
- Central Regional Lands Office, P.O. Box 2222, Gander, NL, A1V 2N9 Email: centrallandsoffice@gov.nl.ca
- Western Regional Lands Office, P.O. Box 2006, Sir Richard Squires Building, Corner Brook, NL, A2H 6J8 Email: westernregionlands@gov.nl.ca
- Labrador Regional Lands Office, P.O. Box 3014, Station "B", Happy Valley-Goose Bay, NL, A0P 1E0 Email: labradorlandsoffice@gov.nl.ca

(DISCLAIMER: *The Newfoundland and Labrador Gazette* publishes a NOTICE OF INTENT as received from the Applicant and takes no responsibility for errors or omissions in the property being more particularly described.)

May 29

**NOTICE OF INTENT, SECTION 7
LANDS ACT, SNL1991 c36 AS AMENDED**

NOTICE IS HEREBY given that an application has been made to the Department of Forestry, Agriculture and Lands Branch, to acquire title, pursuant to section 7(2.1) (a) of the said Act, to that piece of Crown lands situated within 15 metres of the waters of Port Saunders Harbour, for the purpose of a boathouse, wharf, and slipway.

The application may intrude on the 15 metre shoreline of the above mentioned water body(s) in various locations. For a detailed map, please see website: <http://www.flr.gov.nl.ca/lands/sec7notifications.html>.

Please note: It may take up to five (5) days from the date of application for details to appear on the website. Any person wishing to object to the application must file the objection in writing with reasons, within 30 days from the publication of notice on the Department of Forestry, Agriculture and Lands website, Crown Lands, <https://www.flr.gov.nl.ca/lands/index.html>, to the Minister of Department of Forestry, Agriculture and Lands by mail or email to the nearest Regional Lands Office:

- Eastern Regional Lands Office, P.O. Box 8700, Howley Building, Higgins Line, St. John's, NL, A1B 4J6 Email: easternlandsoffice@gov.nl.ca
- Central Regional Lands Office, P.O. Box 2222, Gander, NL, A1V 2N9 Email: centrallandsoffice@gov.nl.ca

- Western Regional Lands Office, P.O. Box 2006, Sir Richard Squires Building, Corner Brook, NL, A2H 6J8 Email: westernregionlands@gov.nl.ca

- Labrador Regional Lands Office, P.O. Box 3014, Station "B", Happy Valley-Goose Bay, NL, A0P 1E0 Email: labradorlandsoffice@gov.nl.ca

(DISCLAIMER: *The Newfoundland and Labrador Gazette* publishes a NOTICE OF INTENT as received from the Applicant and takes no responsibility for errors or omissions in the property being more particularly described.)

May 29

**NOTICE OF INTENT, SECTION 7
LANDS ACT, SNL1991 c36 AS AMENDED**

NOTICE IS HEREBY given that an application has been made to the Department of Forestry, Agriculture and Lands Branch, to acquire title, pursuant to section 7(2.1) (a) of the said Act, to that piece of Crown lands situated within 15 metres of the waters of Trinity Bay, for the purpose of a recreational/pleasure craft marina.

The application may intrude on the 15 metre shoreline of the above mentioned water body(s) in various locations. For a detailed map, please see website: <http://www.flr.gov.nl.ca/lands/sec7notifications.html>.

Please note: It may take up to five (5) days from the date of application for details to appear on the website. Any person wishing to object to the application must file the objection in writing with reasons, within 30 days from the publication of notice on the Department of Forestry, Agriculture and Lands website, Crown Lands, <https://www.flr.gov.nl.ca/lands/index.html>, to the Minister of Department of Forestry, Agriculture and Lands by mail or email to the nearest Regional Lands Office:

- Eastern Regional Lands Office, P.O. Box 8700, Howley Building, Higgins Line, St. John's, NL, A1B 4J6 Email: easternlandsoffice@gov.nl.ca
- Central Regional Lands Office, P.O. Box 2222, Gander, NL, A1V 2N9 Email: centrallandsoffice@gov.nl.ca
- Western Regional Lands Office, P.O. Box 2006, Sir Richard Squires Building, Corner Brook, NL, A2H 6J8 Email: westernregionlands@gov.nl.ca
- Labrador Regional Lands Office, P.O. Box 3014, Station "B", Happy Valley-Goose Bay, NL, A0P 1E0 Email: labradorlandsoffice@gov.nl.ca

(DISCLAIMER: *The Newfoundland and Labrador Gazette* publishes a NOTICE OF INTENT as received from the Applicant and takes no responsibility for errors or omissions in the property being more particularly described.)

May 29

**NOTICE OF INTENT, SECTION 7
LANDS ACT, SNL1991 c36 AS AMENDED**

NOTICE IS HEREBY given that an application has been made to the Department of Forestry, Agriculture and Lands Branch, to acquire title, pursuant to section 7(2) (a) of the said Act, to that piece of Crown lands situated within 15 metres of the waters of Voisey's Bay, Labrador and various unnamed waterbodies between the strange Lake Mine Site in Quebec and Voisey's Bay for the purpose of completing geotechnical investigations for a proposed new access road in support of EA registration 2272.

The application may intrude on the 15 metre shoreline of the above mentioned water body(s) in various locations. For a detailed map, please see website: <http://www.flr.gov.nl.ca/lands/sec7notifications.html>.

Please note: It may take up to five (5) days from the date of application for details to appear on the website. Any person wishing to object to the application must file the objection in writing with reasons, within 30 days from the publication of notice on the Department of Forestry, Agriculture and Lands website, Crown Lands, <https://www.flr.gov.nl.ca/lands/index.html>, to the Minister of Department of Forestry, Agriculture and Lands by mail or email to the nearest Regional Lands Office:

- Eastern Regional Lands Office, P.O. Box 8700, Howley Building, Higgins Line, St. John's, NL, A1B 4J6 Email: easternlandsoffice@gov.nl.ca
- Central Regional Lands Office, P.O. Box 2222, Gander, NL, A1V 2N9
Email: centrallandsoffice@gov.nl.ca
- Western Regional Lands Office, P.O. Box 2006, Sir Richard Squires Building, Corner Brook, NL, A2H 6J8 Email: westernregionlands@gov.nl.ca
- Labrador Regional Lands Office, P.O. Box 3014, Station "B", Happy Valley-Goose Bay, NL, A0P 1E0
Email: labradorlandsoffice@gov.nl.ca

(DISCLAIMER: *The Newfoundland and Labrador Gazette* publishes a NOTICE OF INTENT as received

from the Applicant and takes no responsibility for errors or omissions in the property being more particularly described.)

May 29

TRUSTEE ACT

ESTATE NOTICE

IN THE ESTATE OF DORIS COX, Housewife, Late of the Town of Terrenceville, Newfoundland and Labrador, died at the Town of St. Lawrence, Newfoundland and Labrador, Canada.

ALL PERSONS claiming to be creditors of, or who have any claims or demands either as beneficiaries or next-of-kin (by blood, legal adoption or marriage) upon or affecting the ESTATE OF DORIS COX, Housewife, Deceased, are hereby requested to send particulars thereof in writing, duly attested, to the undersigned solicitors for the Executrix of the Estate of the said deceased on or before the 30th day of June, 2026, after which date the said Executrix will proceed to distribute the said Estate having regard only to the claims to which she shall then have had notice.

DATED at the Town of Marystown, Province of Newfoundland and Labrador, this 15th day of May, 2026.

APPLEBY PICCO LAW
Solicitors for the Executrix
PER: CINDY E. PICCO

ADDRESS FOR SERVICE:
P.O. Box 218
Marystown, NL A0E 2M0

Tel: (709) 279 2467
Fax: (709) 279-3836

May 22 & 29

ESTATE NOTICE

IN THE ESTATE of EUGENE COX, Carpenter, Late of the Town of Terrenceville, Newfoundland and Labrador, died at the Town of St. Lawrence, Newfoundland and Labrador, Canada.

ALL PERSONS claiming to be creditors of, or who have any claims or demands either as beneficiaries or next-of-kin (by blood, legal adoption or marriage) upon or affecting the Estate of EUGENE COX, Carpenter, Deceased, are hereby requested to send particulars thereof in writing, duly attested, to the

undersigned solicitors for the Executrix of the Estate of the said deceased on or before the 30th day of June, 2026, after which date the said Executrix will proceed to distribute the said Estate having regard only to the claims to which she shall then have had notice.

DATED at the Town of Marystown, Province of Newfoundland and Labrador, this 15th day of May, 2026.

APPLEBY PICCO LAW
Solicitors for the Executrix
PER: CINDY E. PICCO

ADDRESS FOR SERVICE:
P.O. Box 218
Marystown, NL A0E 2M0

Tel: (709) 279-2467
Fax: (709) 279-3836

May 22 & 29

ESTATE NOTICE

IN THE MATTER OF the estate of STEVEN ALBERT ROSS ELLIS, Late of Howley, in the Province of Newfoundland and Labrador, deceased.

ALL PERSONS claiming to be creditors of or who have any claims or demands either as beneficiaries or next of kin (by blood, legal adoption or marriage) upon or affecting the Estate of STEVEN ALBERT ROSS ELLIS, who Died at Howley, Newfoundland and Labrador on or about April 23 ,2023, are hereby requested to send particulars thereof in writing, duly attested, to the Office of the Public Trustee, 401-136 Crosbie Road, St. John's, NL, A1B 3K3, Administrator of the Estate of STEVEN ALBERT ROSS ELLIS, on or before June 29th, 2026, after which date the said Administrator will proceed to distribute the Estate having regard only to the claims of which he then shall have had notice.

DATED at St. John's, this 25th day of May, 2026.

OFFICE OF THE PUBLIC TRUSTEE
Administrator of the Estate of
STEVEN ALBERT ROSS ELLIS

ADDRESS FOR SERVICE:
Viking Building
Suite 401 - 136 Crosbie Road
St. John's, NL A1B 3K3

Tel: (709) 729-4832
Tel: (709) 729-0850
Fax: (709) 729-3063

May 29

ESTATE NOTICE

IN THE ESTATE of EDWARD EUGENE MADORE, of Jeffrey's, in the Province of Newfoundland and Labrador, Fisherman/Logger, Single, Deceased.

ALL PERSONS claiming to be creditors of or who have any claims or demands upon or affecting the Estate of EDWARD EUGENE MADORE, of Jeffrey's, in the Province of Newfoundland and Labrador, Deceased, are hereby requested to send the particulars of the same in writing, duly attested, to the undersigned Solicitor for the Executor of the Estate on or before the 26th day of June, 2026, after which date the said Executor will proceed to distribute the said Estate having regard only to the claims of which notice shall have been received.

DATED at Stephenville, Newfoundland and Labrador this 21st day of May 2026.

MILLS LAW
Solicitor for the Executor
PER: EDWARD EUGENE MADORE

ADDRESS FOR SERVICE:
P.O. Box 447
87 Gallant Street
Stephenville, NL A2N 3A3

Tel: (709) 643-5688
Fax: (709) 643-2906

May 29



The Newfoundland and Labrador Gazette

PART II
SUBORDINATE LEGISLATION
FILED UNDER THE STATUTES AND SUBORDINATE LEGISLATION ACT

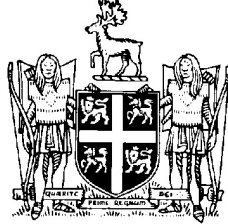
Vol. 101

ST. JOHN'S, FRIDAY, MAY 29, 2026

No. 22

NEWFOUNDLAND AND LABRADOR
REGULATIONS

NLR 20/26



**NEWFOUNDLAND AND LABRADOR
REGULATION 20/26**

*Notice of Protected Water Supply Area of Butler's Brook, WS-S-0421,
Local Service District of Little St. Lawrence
under the
Water Resources Act*

(Filed May 28, 2026)

Under the authority of section 39 of the *Water Resources Act*, I designate the area generally known as the Butler's Brook Protected Public Water Supply Area, WS-S-0421, for the Local Service District of Little St. Lawrence, as a protected water supply area.

Dated at St. John's, May 25, 2026.

Chris Tibbs
Minister of Environment, Conservation and Climate Change

NOTICE

This area includes all lands in the Provincial Electoral District of Burin - Grand Bank abutted and bounded as follows:

Beginning at a point having scaled UTM coordinates of easting 628,859 metres and northing 5,200,673 metres;

Then running in a southwesterly direction for a distance of 500 metres, more or less, to a point having scaled UTM coordinates of easting 628,437 metres and northing 5,200,404 metres;

Then running in a westerly direction for a distance of 285 metres, more or less, to a point having scaled UTM coordinates of easting 628,169 metres and northing 5,200,501 metres;

Then running in a westerly direction for a distance of 103 metres, more or less, to a point having scaled UTM coordinates of easting 628,070 metres and northing 5,200,472 metres;

Then running in a southerly direction for a distance of 45 metres, more or less, to a point having scaled UTM coordinates of easting 628,058 metres and northing 5,200,429 metres;

Then running in a westerly direction for a distance of 161 metres, more or less, to a point having scaled UTM coordinates of easting 627,897 metres and northing 5,200,437 metres;

Then running in a southerly direction for a distance of 373 metres, more or less, to a point having scaled UTM coordinates of easting 627,826 metres and northing 5,200,071 metres;

Then running in a southwesterly direction for a distance of 367 metres, more or less, to a point having scaled UTM coordinates of easting 627,535 metres and northing 5,199,847 metres;

Then running in a southerly direction for a distance of 196 metres, more or less, to a point having scaled UTM coordinates of easting 627,560 metres and northing 5,199,653 metres;

Then running in a southwesterly direction for a distance of 524 metres, more or less, to a point having scaled UTM coordinates of easting 627,279 metres and northing 5,199,211 metres;

Then running in a southwesterly direction for a distance of 725 metres, more or less, to a point having scaled UTM coordinates of easting 626,738 metres and northing 5,198,729 metres;

Then running in a southwesterly direction for a distance of 551 metres, more or less, to a point having scaled UTM coordinates of easting 626,454 metres and northing 5,198,257 metres;

Then running in a westerly direction for a distance of 1,056 metres, more or less, to a point having scaled UTM coordinates of easting 625,407 metres and northing 5,198,397 metres;

Then running in a westerly direction for a distance of 346 metres, more or less, to a point having scaled UTM coordinates of easting 625,073 metres and northing 5,198,307 metres;

Then running in a northwesterly direction for a distance of 252 metres, more or less, to a point having scaled UTM coordinates of easting 624,886 metres and northing 5,198,476 metres;

Then running in a northerly direction for a distance of 111 metres, more or less, to a point having scaled UTM coordinates of easting 624,884 metres and northing 5,198,587 metres;

Then running in a northerly direction for a distance of 170 metres, more or less, to a point having scaled UTM coordinates of easting 624,929 metres and northing 5,198,751 metres;

Then running in a northerly direction for a distance of 155 metres, more or less, to a point having scaled UTM coordinates of easting 624,878 metres and northing 5,198,897 metres;

Then running in a southwesterly direction for a distance of 228 metres, more or less, to a point having scaled UTM coordinates of easting 624,729 metres and northing 5,198,725 metres;

Then running in a northwesterly direction for a distance of 170 metres, more or less, to a point having scaled UTM coordinates of easting 624,598 metres and northing 5,198,834 metres;

Then running in a northerly direction for a distance of 1,118 metres, more or less, to a point having scaled UTM coordinates of easting 624,221 metres and northing 5,199,886 metres;

Then running in a northeasterly direction for a distance of 419 metres, more or less, to a point having scaled UTM coordinates of easting 624,603 metres and northing 5,200,057 metres;

Then running in an easterly direction for a distance of 308 metres, more or less, to a point having scaled UTM coordinates of easting 624,908 metres and northing 5,200,012 metres;

Then running in a northerly direction for a distance of 546 metres, more or less, to a point having scaled UTM coordinates of easting 625,033 metres and northing 5,200,543 metres;

Then running in a northeasterly direction for a distance of 231 metres, more or less, to a point having scaled UTM coordinates of easting 625,222 metres and northing 5,200,675 metres;

Then running in a northwesterly direction for a distance of 335 metres, more or less, to a point having scaled UTM coordinates of easting 625,067 metres and northing 5,200,972 metres;

Then running in a northerly direction for a distance of 1,117 metres, more or less, to a point having scaled UTM coordinates of easting 625,179 metres and northing 5,202,083 metres;

Then running in a northeasterly direction for a distance of 247 metres, more or less, to a point having scaled UTM coordinates of easting 625,289 metres and northing 5,202,304 metres;

Then running in a northerly direction for a distance of 235 metres, more or less, to a point having scaled UTM coordinates of easting 625,299 metres and northing 5,202,539 metres;

Then running in an easterly direction for a distance of 793 metres, more or less, to a point having scaled UTM coordinates of easting 626,091 metres and northing 5,202,583 metres;

Then running in a northwesterly direction for a distance of 391 metres, more or less, to a point having scaled UTM coordinates of easting 625,917 metres and northing 5,202,933 metres;

Then running in a northerly direction for a distance of 2,042 metres, more or less, to a point having scaled UTM coordinates of easting 626,033 metres and northing 5,204,972 metres;

Then running in a northeasterly direction for a distance of 176 metres, more or less, to a point having scaled UTM coordinates of easting 626,139 metres and northing 5,205,113 metres;

Then running in a northeasterly direction for a distance of 60 metres, more or less, to a point having scaled UTM coordinates of easting 626,194 metres and northing 5,205,136 metres;

Then running in a northerly direction for a distance of 547 metres, more or less, to a point having scaled UTM coordinates of easting 626,305 metres and northing 5,205,672 metres;

Then running in a northeasterly direction for a distance of 129 metres, more or less, to a point having scaled UTM coordinates of easting 626,396 metres and northing 5,205,764 metres;

Then running in a northerly direction for a distance of 385 metres, more or less, to a point having scaled UTM coordinates of easting 626,483 metres and northing 5,206,139 metres;

Then running in a westerly direction for a distance of 756 metres, more or less, to a point having scaled UTM coordinates of easting 625,744 metres and northing 5,205,980 metres;

Then running in a northerly direction for a distance of 2,602 metres, more or less, to a point having scaled UTM coordinates of easting 626,643 metres and northing 5,208,422 metres;

Then running in a northerly direction for a distance of 1,090 metres, more or less, to a point having scaled UTM coordinates of easting 626,824 metres and northing 5,209,497 metres;

Then running in an easterly direction for a distance of 213 metres, more or less, to a point having scaled UTM coordinates of easting 627,036 metres and northing 5,209,519 metres;

Then running in a southeasterly direction for a distance of 500 metres, more or less, to a point having scaled UTM coordinates of easting 627,478 metres and northing 5,209,286 metres;

Then running in a southeasterly direction for a distance of 378 metres, more or less, to a point having scaled UTM coordinates of easting 627,691 metres and northing 5,208,974 metres;

Then running in an easterly direction for a distance of 208 metres, more or less, to a point having scaled UTM coordinates of easting 627,891 metres and northing 5,208,916 metres;

Then running in a northerly direction for a distance of 632 metres, more or less, to a point having scaled UTM coordinates of easting 627,711 metres and northing 5,209,522 metres;

Then running in a northeasterly direction for a distance of 492 metres, more or less, to a point having scaled UTM coordinates of easting 627,952 metres and northing 5,209,951 metres;

Then running in an easterly direction for a distance of 480 metres, more or less, to a point having scaled UTM coordinates of easting 628,431 metres and northing 5,209,920 metres;

Then running in an easterly direction for a distance of 629 metres, more or less, to a point having scaled UTM coordinates of easting 629,028 metres and northing 5,209,723 metres;

Then running in a northeasterly direction for a distance of 142 metres, more or less, to a point having scaled UTM coordinates of easting 629,149 metres and northing 5,209,798 metres;

Then running in an easterly direction for a distance of 437 metres, more or less, to a point having scaled UTM coordinates of easting 629,585 metres and northing 5,209,772 metres;

Then running in an easterly direction for a distance of 323 metres, more or less, to a point having scaled UTM coordinates of easting 629,884 metres and northing 5,209,649 metres;

Then running in a southerly direction for a distance of 457 metres, more or less, to a point having scaled UTM coordinates of easting 629,993 metres and northing 5,209,205 metres;

Then running in an easterly direction for a distance of 589 metres, more or less, to a point having scaled UTM coordinates of easting 630,571 metres and northing 5,209,320 metres;

Then running in a southerly direction for a distance of 205 metres, more or less, to a point having scaled UTM coordinates of easting 630,634 metres and northing 5,209,125 metres;

Then running in an easterly direction for a distance of 482 metres, more or less, to a point having scaled UTM coordinates of easting 631,106 metres and northing 5,209,028 metres;

Then running in a southeasterly direction for a distance of 141 metres, more or less, to a point having scaled UTM coordinates of easting 631,169 metres and northing 5,208,902 metres;

Then running in an easterly direction for a distance of 155 metres, more or less, to a point having scaled UTM coordinates of easting 631,323 metres and northing 5,208,919 metres;

Then running in a southeasterly direction for a distance of 316 metres, more or less, to a point having scaled UTM coordinates of easting 631,552 metres and northing 5,208,701 metres;

Then running in a southerly direction for a distance of 306 metres, more or less, to a point having scaled UTM coordinates of easting 631,641 metres and northing 5,208,408 metres;

Then running in a southwesterly direction for a distance of 413 metres, more or less, to a point having scaled UTM coordinates of easting 631,416 metres and northing 5,208,062 metres;

Then running in a southerly direction for a distance of 110 metres, more or less, to a point having scaled UTM coordinates of easting 631,408 metres and northing 5,207,952 metres;

Then running in a northwesterly direction for a distance of 212 metres, more or less, to a point having scaled UTM coordinates of easting 631,220 metres and northing 5,208,050 metres;

Then running in a southwesterly direction for a distance of 594 metres, more or less, to a point having scaled UTM coordinates of easting 630,672 metres and northing 5,207,820 metres;

Then running in a southwesterly direction for a distance of 339 metres, more or less, to a point having scaled UTM coordinates of easting 630,412 metres and northing 5,207,602 metres;

Then running in a westerly direction for a distance of 183 metres, more or less, to a point having scaled UTM coordinates of easting 630,238 metres and northing 5,207,660 metres;

Then running in a southwesterly direction for a distance of 150 metres, more or less, to a point having scaled UTM coordinates of easting 630,106 metres and northing 5,207,588 metres;

Then running in a westerly direction for a distance of 339 metres, more or less, to a point having scaled UTM coordinates of easting 629,774 metres and northing 5,207,518 metres;

Then running in a southwesterly direction for a distance of 85 metres, more or less, to a point having scaled UTM coordinates of easting 629,716 metres and northing 5,207,456 metres;

Then running in a southerly direction for a distance of 271 metres, more or less, to a point having scaled UTM coordinates of easting 629,690 metres and northing 5,207,186 metres;

Then running in a southerly direction for a distance of 387 metres, more or less, to a point having scaled UTM coordinates of easting 629,566 metres and northing 5,206,819 metres;

Then running in a southwesterly direction for a distance of 881 metres, more or less, to a point having scaled UTM coordinates of easting 629,026 metres and northing 5,206,123 metres;

Then running in a southeasterly direction for a distance of 295 metres, more or less, to a point having scaled UTM coordinates of easting 629,189 metres and northing 5,205,877 metres;

Then running in an easterly direction for a distance of 100 metres, more or less, to a point having scaled UTM coordinates of easting 629,288 metres and northing 5,205,862 metres;

Then running in a southerly direction for a distance of 456 metres, more or less, to a point having scaled UTM coordinates of easting 629,339 metres and northing 5,205,409 metres;

Then running in a southeasterly direction for a distance of 626 metres, more or less, to a point having scaled UTM coordinates of easting 629,721 metres and northing 5,204,913 metres;

Then running in a southeasterly direction for a distance of 558 metres, more or less, to a point having scaled UTM coordinates of easting 629,990 metres and northing 5,204,424 metres;

Then running in a southerly direction for a distance of 209 metres, more or less, to a point having scaled UTM coordinates of easting 629,995 metres and northing 5,204,215 metres;

Then running in a southwesterly direction for a distance of 110 metres, more or less, to a point having scaled UTM coordinates of easting 629,928 metres and northing 5,204,128 metres;

Then running in a southwesterly direction for a distance of 117 metres, more or less, to a point having scaled UTM coordinates of easting 629,875 metres and northing 5,204,024 metres;

Then running in a westerly direction for a distance of 371 metres, more or less, to a point having scaled UTM coordinates of easting 629,507 metres and northing 5,203,975 metres;

Then running in a southerly direction for a distance of 489 metres, more or less, to a point having scaled UTM coordinates of easting 629,420 metres and northing 5,203,494 metres;

Then running in a southwesterly direction for a distance of 197 metres, more or less, to a point having scaled UTM coordinates of easting 629,298 metres and northing 5,203,339 metres;

Then running in a southeasterly direction for a distance of 524 metres, more or less, to a point having scaled UTM coordinates of easting 629,548 metres and northing 5,202,879 metres;

Then running in a southeasterly direction for a distance of 302 metres, more or less, to a point having scaled UTM coordinates of easting 629,709 metres and northing 5,202,624 metres;

Then running in a southwesterly direction for a distance of 1,103 metres, more or less, to a point having scaled UTM coordinates of easting 629,097 metres and northing 5,201,706 metres;

Then running in a southwesterly direction for a distance of 427 metres, more or less, to a point having scaled UTM coordinates of easting 628,823 metres and northing 5,201,379 metres;

Then running in a southerly direction for a distance of 305 metres, more or less, to a point having scaled UTM coordinates of easting 628,860 metres and northing 5,201,076 metres;

Then running in a southeasterly direction for a distance of 379 metres, more or less, to a point having scaled UTM coordinates of easting 629,107 metres and northing 5,200,789 metres;

Then running in a southerly direction for a distance of 192 metres, more or less, to a point having scaled UTM coordinates of easting 629,076 metres and northing 5,200,600 metres;

Then running in a westerly direction for a distance of 229 metres, more or less, to the point of commencement.

All coordinates refer to Zone 21 of the NAD 83 Universal Transverse Mercator Projection.

©King's Printer

Index

PART I

City of St. John's Act – Notice.....	196
Lands Act – Notices.....	200
Minerals Act – Notice.....	191
Quieting of Titles Act – Notice.....	197
Trustee Act – Notices	203
Urban And Rural Planning Act. 2000 – Notices	196

PART II

CONTINUING INDEX OF SUBORDINATE LEGISLATION

Title of Act and Subordinate Legislation made thereunder	CNLR or NL Reg.	Amendment	NL Gazette Date & Page No.
Water Resources Act			
Notice of Protected Water Supply Area of Butler's Brook, WS-S- 0421, Local Service District of Little St. Lawrence	NLR 20/26	New	May 29/26 p. 131

The Newfoundland and Labrador Gazette is published from the Office of the King's Printer.

Copy for publication must be received by **Friday, 4:30 p.m.**, seven days before publication date to ensure inclusion in next issue.

Advertisements must be submitted in either PDF format or as a MSWord file. When this is not possible, advertisements must be either, typewritten or printed legibly, separate from covering letter. Number of insertions required must be stated and the names of all signing officers typewritten or printed.

Copy may be mailed to the address below, faxed to (709) 729-1900 or emailed to kingsprinter@gov.nl.ca.

Subscription rate for *The Newfoundland and Labrador Gazette* is \$144.38 for 52 weeks plus 15% HST (\$166.04). Weekly issues, \$3.47 per copy, plus 15% HST (\$3.99) payable in advance.

All cheques, money orders, etc., should be made payable to THE NEWFOUNDLAND EXCHEQUER ACCOUNT and all correspondence should be addressed to: Office of the King's Printer, P. O. Box 8700, Ground Floor, East Block, Confederation Building, St. John's, NL A1B 4J6, Telephone: (709) 729-3649, Fax: (709) 729-1900.

Web Site: www.gov.nl.ca/dgsnl/printer/gazette/weekly-issues/

The Newfoundland and Labrador Gazette

Advertising Rates

Prices effective July 1, 2016

Notices	Rate	15%	HST Total
Lands Act - Notice of Intent - 1 week	\$31.13	\$4.67	\$35.80
Motor Carrier Act - Notice - 1 week	\$39.90	\$5.99	\$45.89
Trustee Act - Estate Notice - 1 week	\$34.65	\$5.20	\$39.85
Trustee Act - Estate Notice - 2 weeks	\$62.37	\$9.36	\$71.73
Trustee Act - Estate Notice - 3 weeks	\$91.25	\$13.69	\$104.94
Trustee Act - Estate Notice - 4 weeks	\$118.97	\$17.85	\$136.82

All other public notices required by law to be published in *The Newfoundland and Labrador Gazette*, eg., Corporations Act, Municipalities Act, Quieting of Titles Act, Urban and Rural Planning Act, etc., are priced according to size: for Single Column \$3.47 per cm or Double Column \$6.93 per cm, plus 15% HST.

For quotes please contact the Office of the King's Printer kingsprinter@gov.nl.ca

Government Information Product
Publication Rate Mail
G.S.T. # R107442683