

Week 47, November 20 – November 26, 2022

Department of Health and Community Services
Government of Newfoundland and Labrador

Respiratory Weekly

Highlights

- ⇒ In week 47, there were 46 laboratory-confirmed cases of influenza, 11 hospitalizations, three ICU admissions and one death (Table 1).
- ⇒ As of November 26, 2022, there have been 70 laboratory-confirmed cases, 19 hospitalizations, four ICU admissions and two deaths. All reported cases to date are influenza A.
- ⇒ Cases have been reported in all health authorities (Figure 2).
- ⇒ Approximately 63% (44 of 70) were less than 45 years of age (Figure 3).
- ⇒ One confirmed influenza outbreak has been reported so far this season (Figure 4).
- ⇒ Emergency room visits with influenza-like illness (ILI) and symptomatic respiratory HealthLine calls have increased since the previous week (Figures 5 and 6).
- ⇒ Other respiratory viruses circulating in week 47 include RSV, PIV, entero/rhinovirus, hMPV and adenovirus (Table 3).
- ⇒ Influenza activity across Canada has started earlier this season and continues to increase steeply.
- ⇒ **Did you get it? Influenza vaccination remains one of the best methods to protect you and your family and prevent the spread of the virus!**

Laboratory-Confirmed Cases

Table 1: Number of positive influenza cases in NL, by severity, week 47, 2022-2023 season

	Cases	Hospitalizations	ICU Admissions	Deaths
Week	46	11	3	1
Total	70	19	4	2

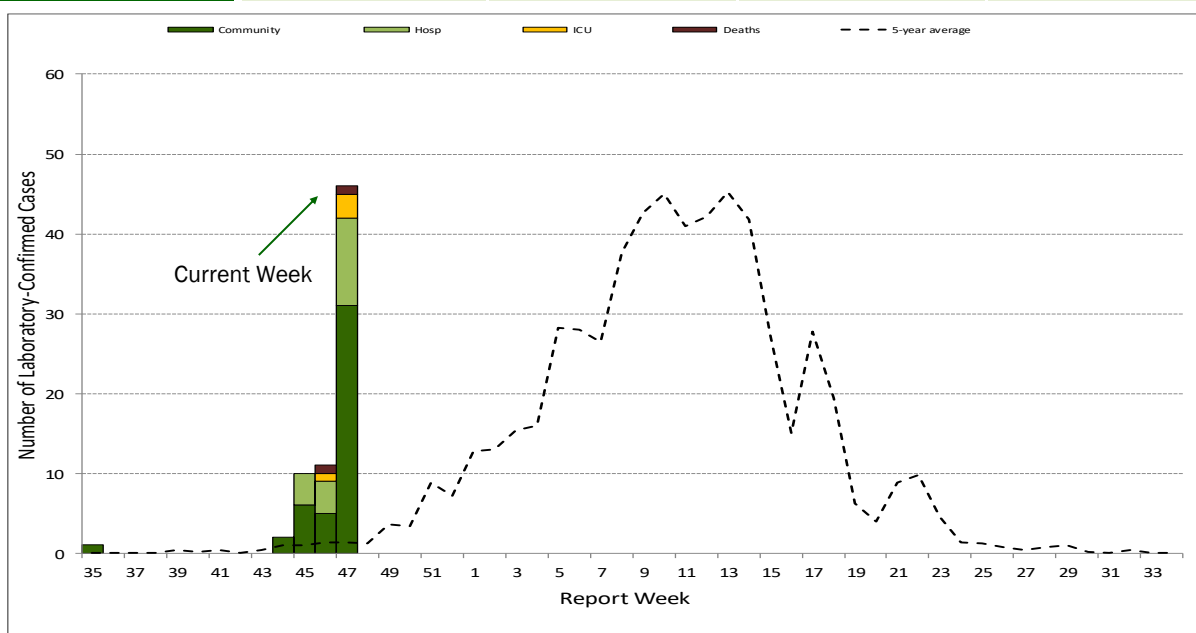


Figure 1: Number of cases, hospitalizations, ICU admissions and deaths, by week virus identified, 2022-2023

Disclaimer: Fluctuations in data occur with each report and can be attributed to continuous reporting.

Influenza by type, RHA

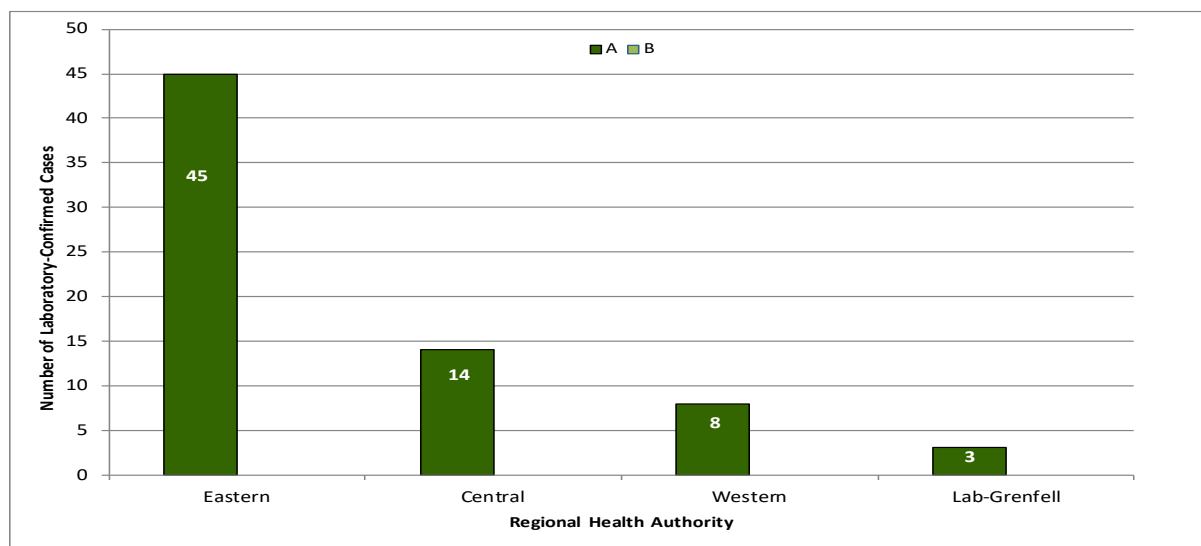


Figure 2: Total number of laboratory-confirmed influenza A and B, by Regional Health Authority, 2022-2023

Influenza by age group (n=70)

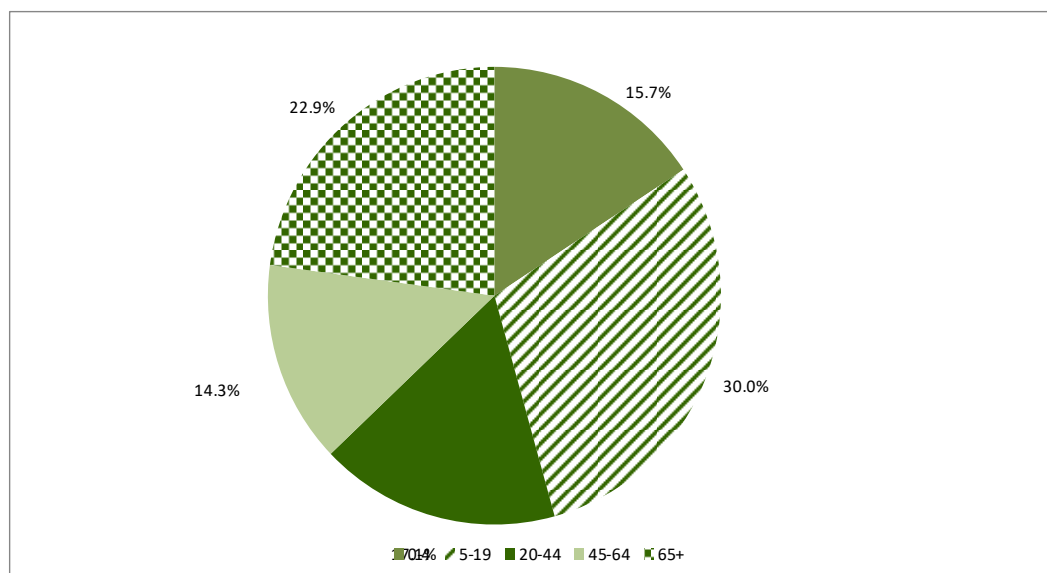


Figure 3: Percent of laboratory-confirmed influenza in NL, by age group, 2022-2023

Antiviral Resistance

Table 2: Cumulative antiviral resistance by influenza virus type and sub-type, Canada, 2022-2023

	Oseltamivir			Zanamivir			Amantadine		
	Tested	Resistant		Tested	Resistant		Tested	Resistant	
	#	#	%	#	#	%	#	#	%
A (H3N2)	15	0	0	15	0	0	0	0	0
A (H1N1)	1	0	0	1	0	0	0	0	0
B	0	0	0	0	0	0	0	0	0
Total	16	0	0	16	0	0	0	0	0

Source: Influenza and Respiratory Viruses Section, National Microbiology Laboratory (NML), Public Health Agency of Canada

Influenza and Other Respiratory Outbreaks

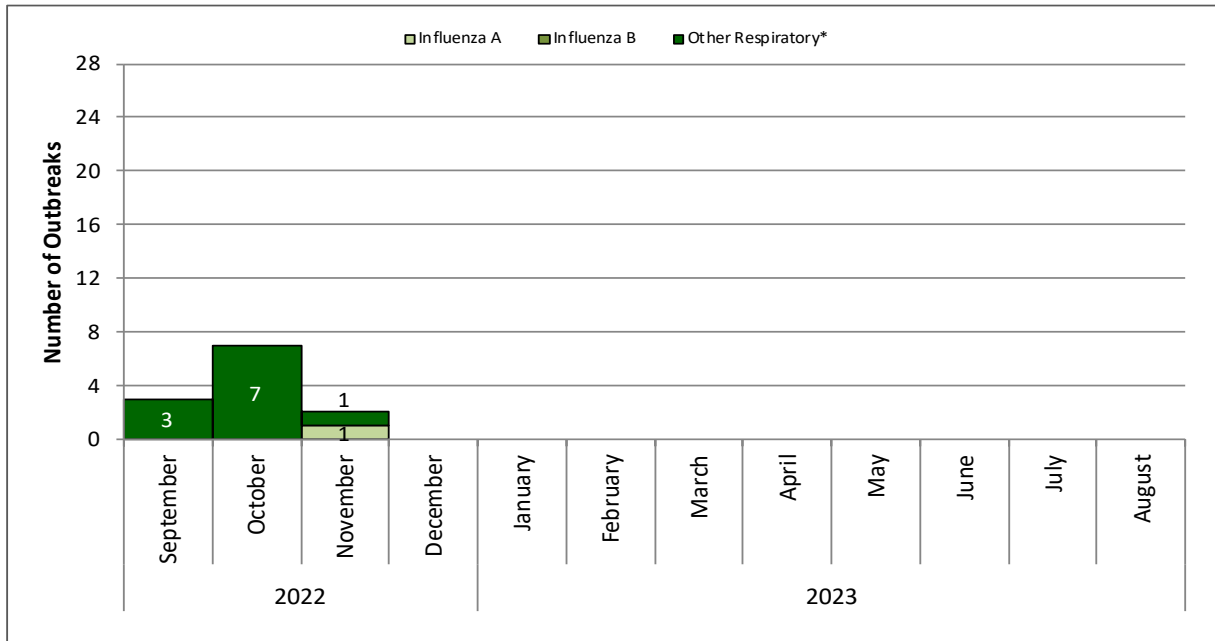


Figure 4: Number of influenza and other respiratory outbreaks, by month of onset, NL, 2022-2023

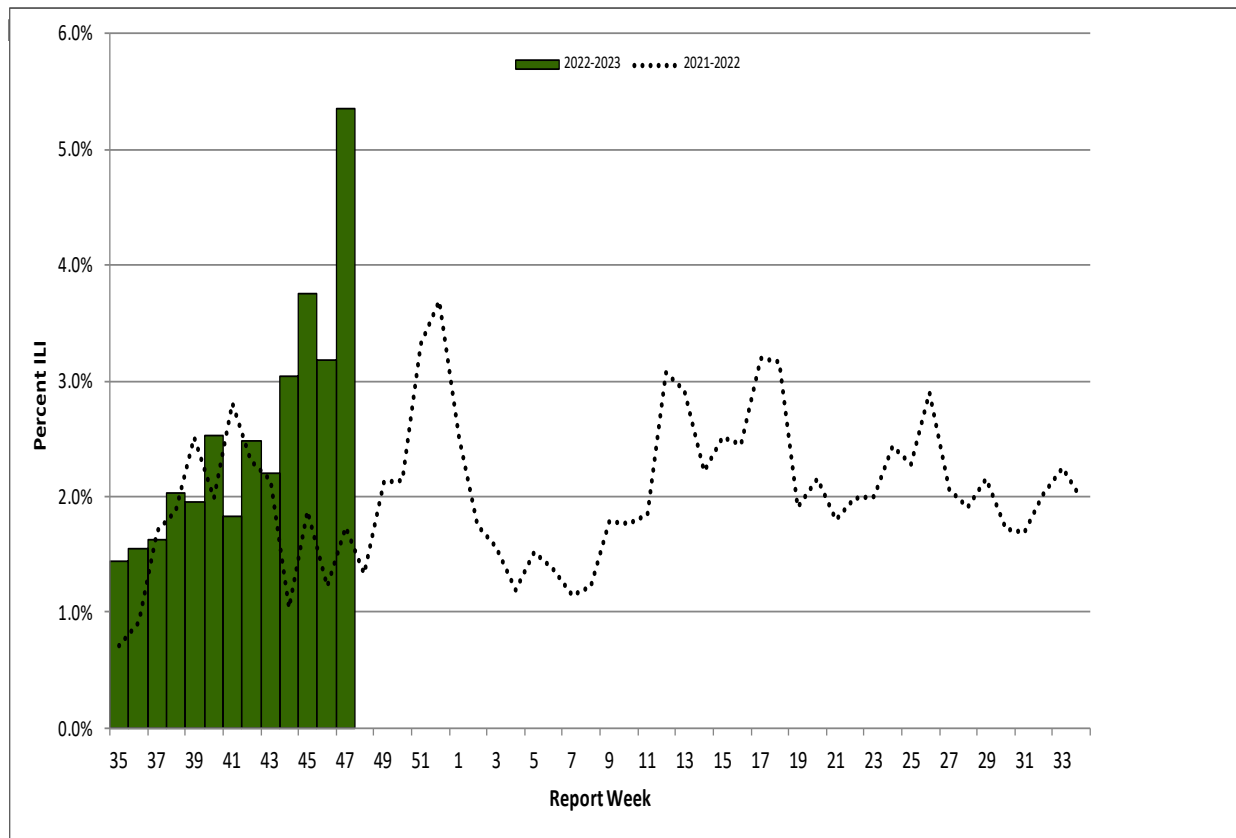


Figure 5: Percent of emergency department visits with ILI by report week, NL, 2022-2023

*Excludes novel coronavirus 2019-nCoV

Other Respiratory Viruses

Table 3: Weekly and total number of positive respiratory virus specimens in NL, by type, 2022-2023 season

	Week 47	Total
R.S.V.	16	113
Parainfluenza virus 1	0	2
Parainfluenza virus 2	1	10
Parainfluenza virus 3	0	16
Adenovirus	12	58
Entero/Rhinovirus	21	358
hMPV	13	95



Source: Respiratory Virus Detection, Public Health Agency of Canada; Public Health and Microbiology Laboratory, Eastern Health
 *Total from August 28, 2022 to November 26, 2022. For information on COVID-19, please visit the [Newfoundland and Labrador COVID-19 Dashboard](#).

HealthLine

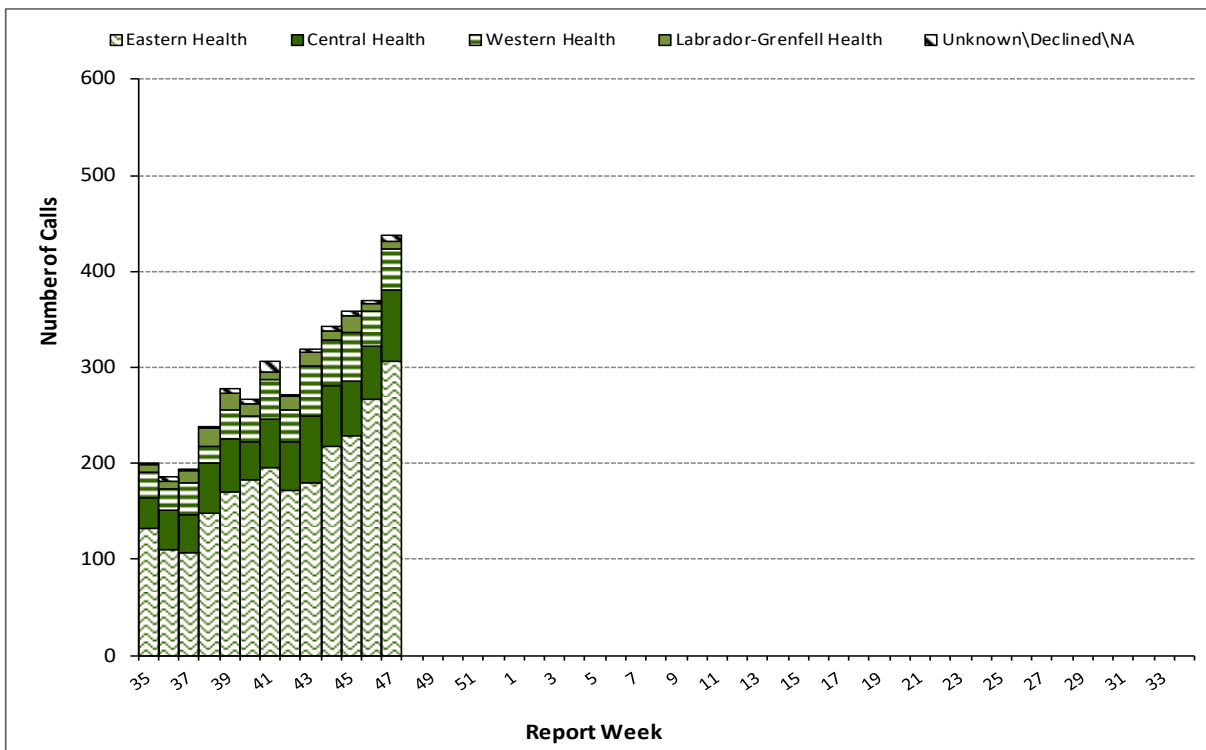


Figure 6: Number of influenza-like-illness HealthLine calls by week and RHA, NL, 2022-2023 season

Resources

- ⇒ Provincial influenza statistics: <https://www.gov.nl.ca/hcs/publichealth/cdc/informationandsurveillance/#influenza>
- ⇒ Find a Flu shot clinic in your community: <https://www.timefortheshot.ca/>
- ⇒ HealthLine phone number is 811 and website: <https://www.811healthline.ca/>
- ⇒ Public Health Laboratory website is <http://publichealthlab.ca/>
- ⇒ FluWatch: <http://healthycanadians.gc.ca/diseases-conditions-maladies-affections/disease-maladie/flu-grippe/surveillance/index-eng.php>