

Week 52, December 25 - December 31 2022

Department of Health and Community Services  
Government of Newfoundland and Labrador



# Respiratory Weekly

## Highlights

- ⇒ In week 52, there were 78 laboratory-confirmed cases of influenza, 19 hospitalizations, two ICU admissions and one death (Table 1).
- ⇒ As of December 31, 2022, there have been 844 laboratory-confirmed cases, 203 hospitalizations, 27 ICU admissions and 17 deaths. All reported cases to date are influenza A.
- ⇒ Cases have been reported in all health authorities (Figure 2).
- ⇒ Approximately 58% (490 of 844) were less than 45 years of age (Figure 3).
- ⇒ Eleven confirmed influenza outbreaks have been reported so far this season (Figure 4).
- ⇒ Emergency room visits with influenza-like illness (ILI) and symptomatic HealthLine calls have decreased from the previous week (Figures 5 and 6).
- ⇒ Other respiratory viruses circulating in week 52 include RSV, PIV, entero/rhinovirus, hMPV and adenovirus (Table 3).
- ⇒ At a national level, influenza activity is decreasing sharply, and is now below average levels typical of this time of year.
- ⇒ **Did you get it? Influenza vaccination remains one of the best methods to protect you and your family and prevent the spread of the virus!**

## Laboratory-Confirmed Cases

Table 1: Number of positive influenza cases in NL, by severity, week 52, 2022-2023 season

	Cases	Hospitalizations	ICU Admissions	Deaths
Week	78	19	2	1
Total	844	203	27	17

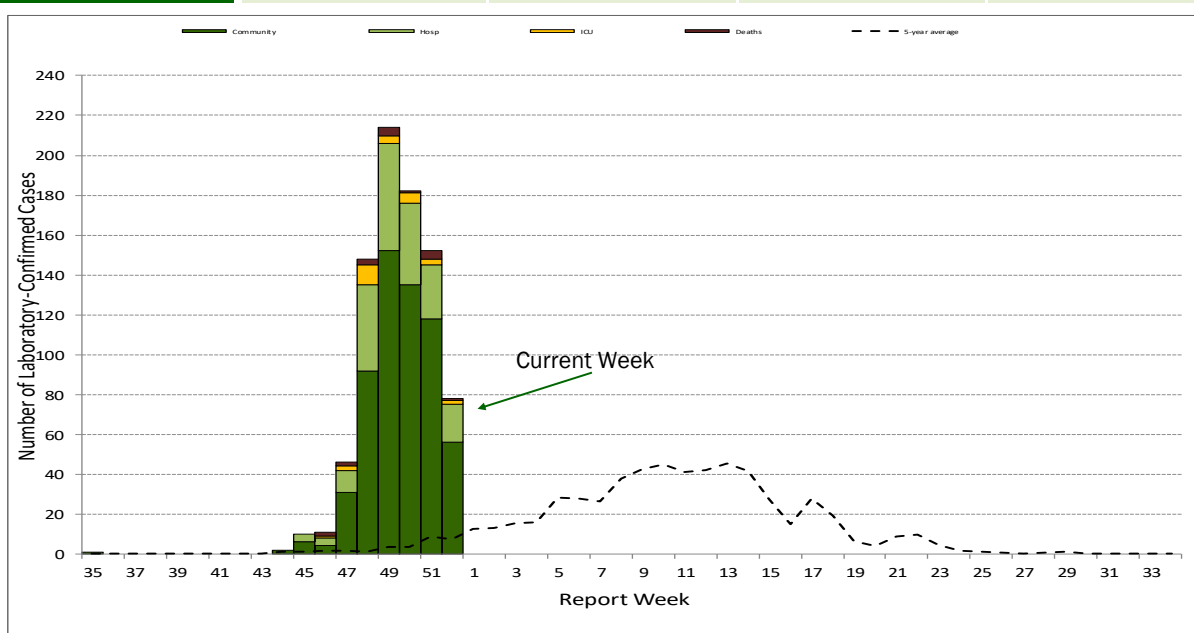


Figure 1: Number of cases, hospitalizations, ICU admissions and deaths, by week virus identified, 2022-2023

Disclaimer: Fluctuations in data occur with each report and can be attributed to continuous reporting.

**Influenza by type, RHA**

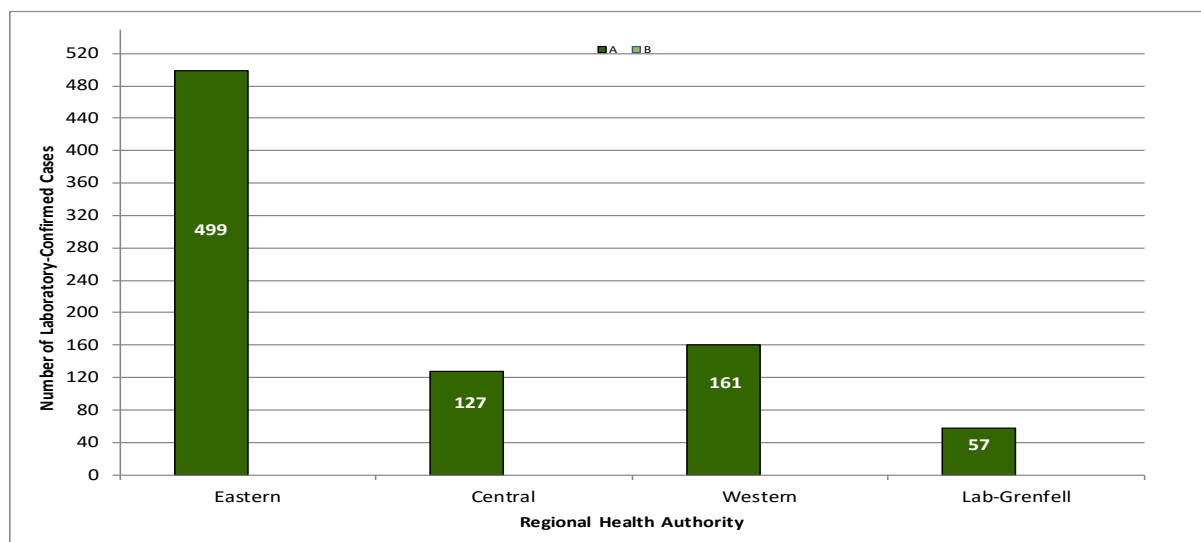


Figure 2: Total number of laboratory-confirmed influenza A and B, by Regional Health Authority, 2022-2023

**Influenza by age group (n=844)**

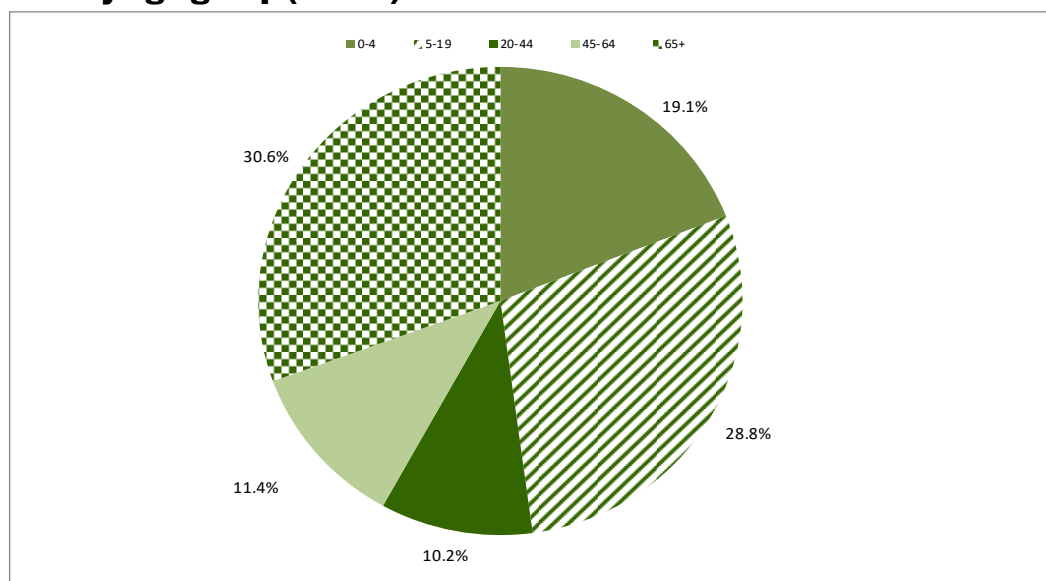


Figure 3: Percent of laboratory-confirmed influenza in NL, by age group, 2022-2023

**Antiviral Resistance**

Table 2: Cumulative antiviral resistance by influenza virus type and sub-type, Canada, 2022-2023

	Oseltamivir			Zanamivir			Amantadine		
	Tested	Resistant		Tested	Resistant		Tested	Resistant	
	#	#	%	#	#	%	#	#	%
A (H3N2)	112	0	0	112	0	0	0	0	0
A (H1N1)	10	0	0	10	0	0	0	0	0
B	0	0	0	0	0	0	0	0	0
<b>Total</b>	<b>122</b>	<b>0</b>	<b>0</b>	<b>122</b>	<b>0</b>	<b>0</b>	<b>0</b>	<b>0</b>	<b>0</b>

Source: Influenza and Respiratory Viruses Section, National Microbiology Laboratory (NML), Public Health Agency of Canada

**Influenza and Other Respiratory Outbreaks**

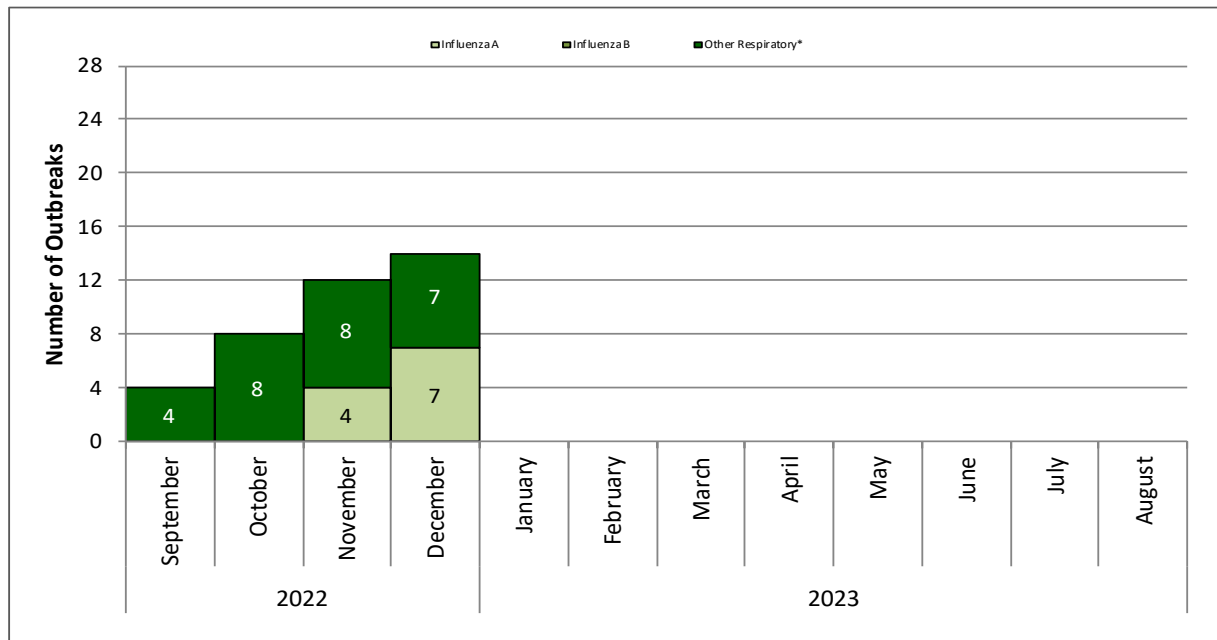


Figure 4: Number of influenza and other respiratory outbreaks, by month of onset, NL, 2022-2023

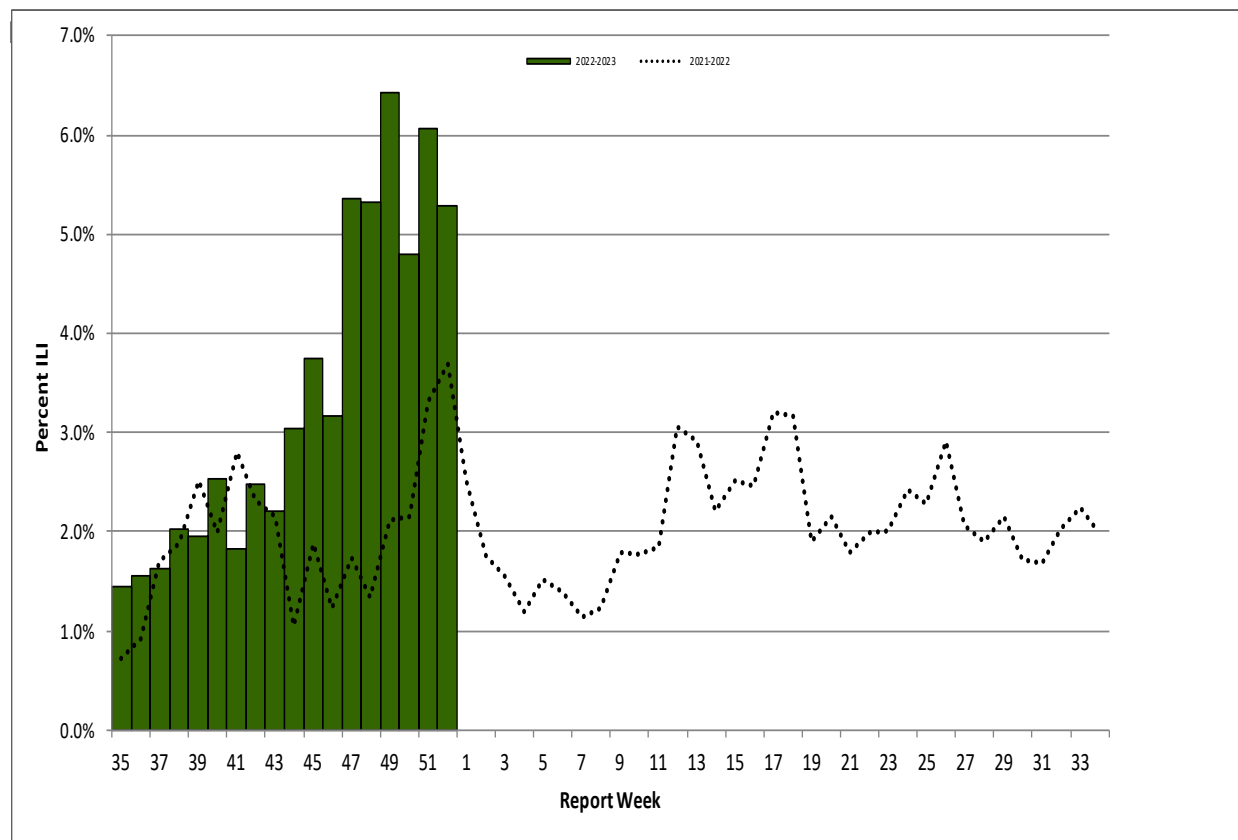


Figure 5: Percent of emergency department visits with ILI by report week, NL, 2022-2023

\*Excludes novel coronavirus 2019-nCoV

### Other Respiratory Viruses

Table 3: Weekly and total number of positive respiratory virus specimens in NL, by type, 2022-2023 season

	Week 52	Total
R.S.V.	17	196
Parainfluenza virus 1	0	3
Parainfluenza virus 2	3	25
Parainfluenza virus 3	3	29
Adenovirus	8	117
Entero/Rhinovirus	22	513
hMPV	18	217



Source: Respiratory Virus Detection, Public Health Agency of Canada; Public Health and Microbiology Laboratory, Eastern Health  
 \*Total from August 28, 2022 to December 31, 2022. For information on COVID-19, please visit the [Newfoundland and Labrador COVID-19 Dashboard](#).

### HealthLine

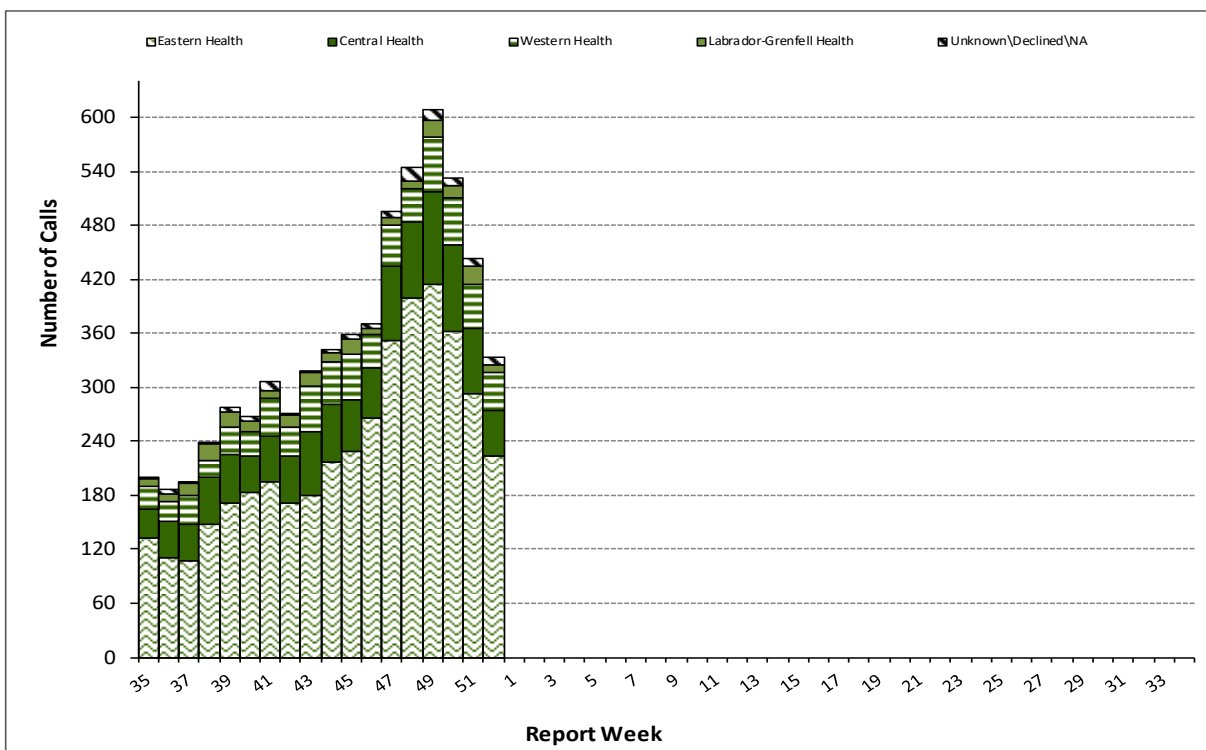


Figure 6: Number of influenza-like-illness HealthLine calls by week and RHA, NL, 2022-2023 season

### Resources

- ⇒ Provincial influenza statistics: <https://www.gov.nl.ca/hcs/publichealth/cdc/informationandsurveillance/#influenza>
- ⇒ Find a Flu shot clinic in your community: <https://www.timefortheshot.ca/>
- ⇒ HealthLine phone number is 811 and website: <https://www.811healthline.ca/>
- ⇒ Public Health Laboratory website is <http://publichealthlab.ca/>
- ⇒ FluWatch: <http://healthycanadians.gc.ca/diseases-conditions-maladies-affections/disease-maladie/flu-grippe/surveillance/index-eng.php>