

Week 10 March 1 – March 7, 2020

Department of Health and Community Services
Government of Newfoundland and Labrador



Respiratory Weekly

Highlights

- ⇒ In week 10, there were 103 laboratory-confirmed cases of influenza reported (Table 1).
- ⇒ As of March 7, 2020, there have been 466 (121A, 345B) laboratory-confirmed cases, 60 hospitalizations, 12 ICU admission and five deaths.
- ⇒ Influenza immunization history is collected (when available) for lab-confirmed cases that result in a hospitalization or death. Of these cases, 10.7% reported receiving the immunization this season, 57.3% reported no immunization, and 32.0% had unknown immunization status.
- ⇒ Influenza activity across Canada remains high. However, several indicators of influenza activity have decreased. In NL, influenza activity is high.
- ⇒ Approximately 45% of cases reported to date were less than 20 years of age (Figure 3).
- ⇒ Two confirmed influenza outbreak has been reported so far this season (Figure 4).
- ⇒ Emergency room visits with influenza-like illness and symptomatic respiratory HealthLine calls have increased from the previous week (Figures 5 and 6).
- ⇒ Other respiratory viruses circulating in week 10 include RSV, PIV, entero/rhinovirus, hMPV and adenovirus (Table 3).
- ⇒ **Did you get it? Influenza vaccination remains one of the best methods to protect you and your children and prevent the spread of the virus!**

Laboratory-Confirmed Cases

Table 1: Number of positive influenza cases in NL, by severity, week 10, 2019-2020 season

	Cases	Hospitalizations	ICU Admissions	Deaths
Week	103	11	2	1
Total	466	60	12	5

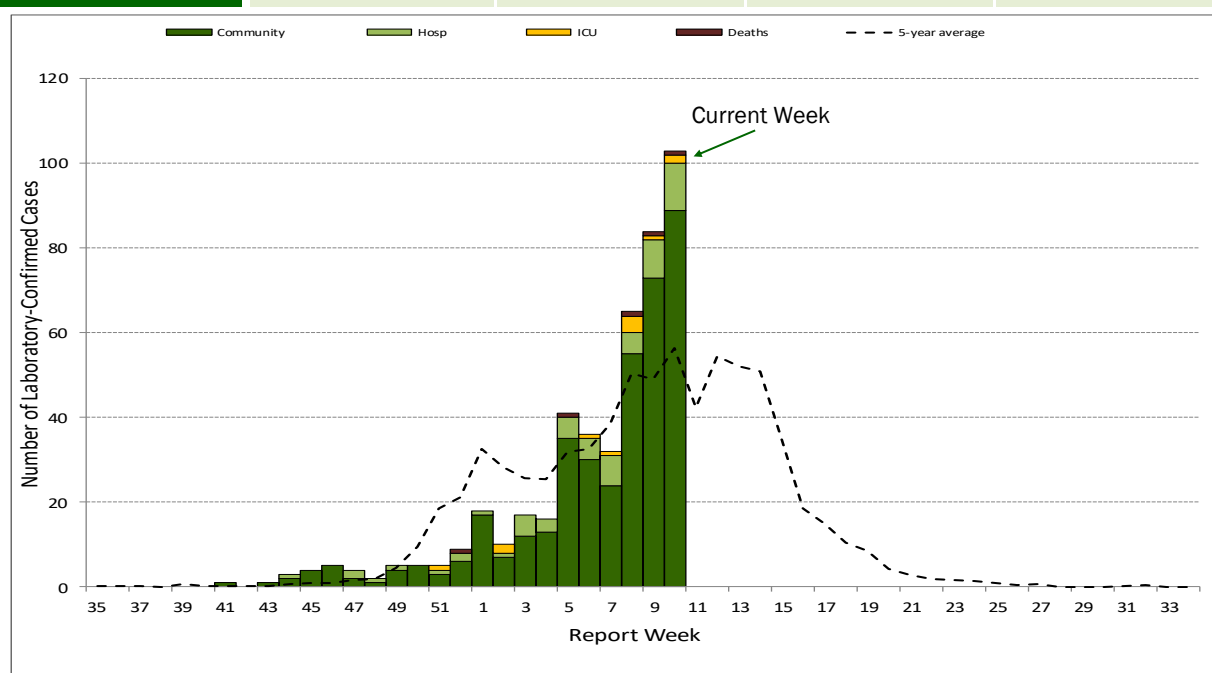


Figure 1: Number of cases, hospitalizations, ICU admissions and deaths, by week virus identified, 2019-2020

Influenza by type, RHA

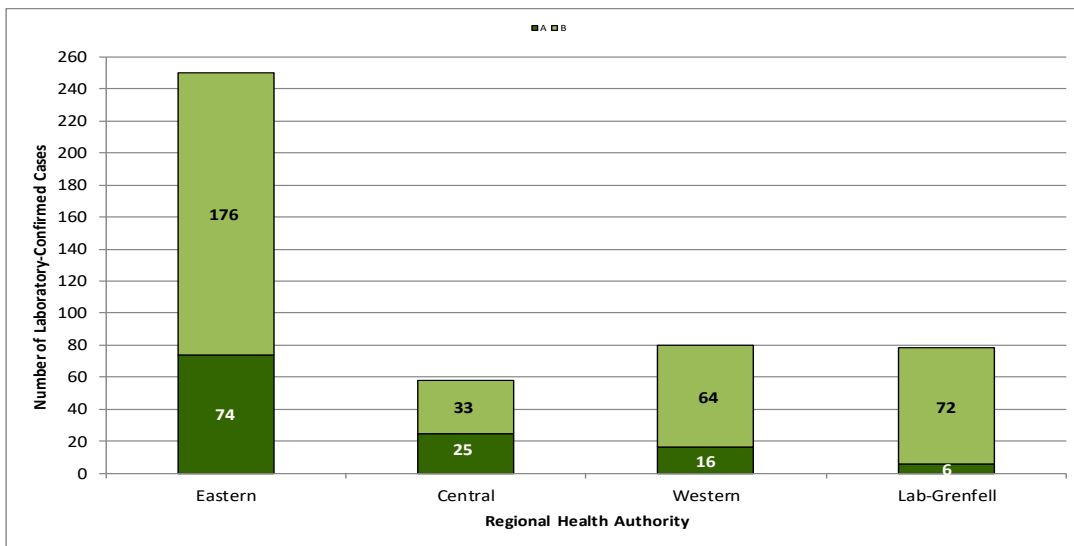


Figure 2: Total number of laboratory-confirmed influenza A and B, by Regional Health Authority, 2019-2020

Influenza by age group (n=466)

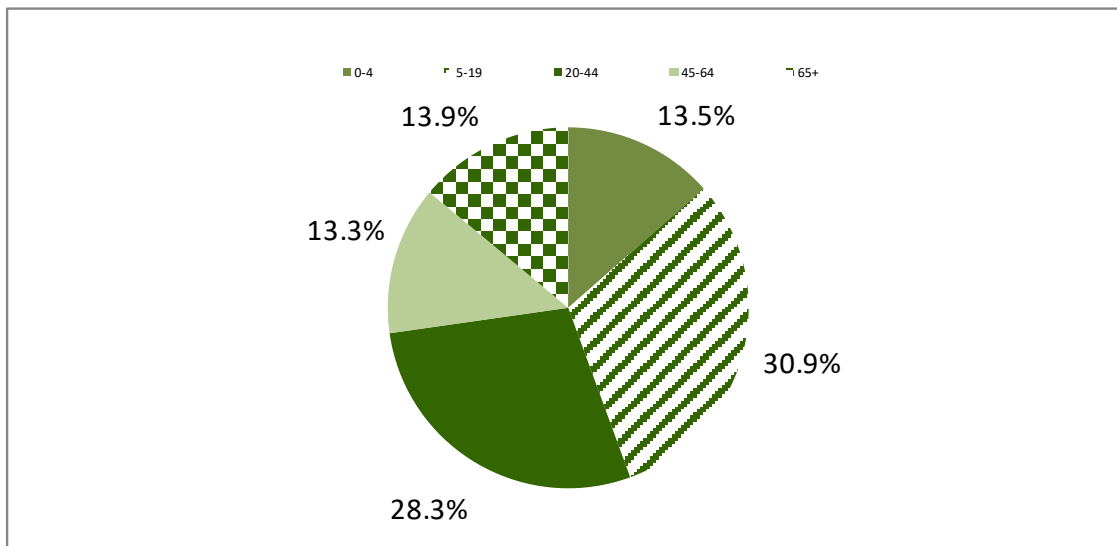


Figure 3: Percent of laboratory-confirmed influenza in NL, by age group, 2019-2020

Antiviral Resistance

Table 2: Cumulative antiviral resistance by influenza virus type and sub-type, Canada, 2019-2020

	Oseltamivir			Zanamivir			Amantadine		
	Tested	Resistant		Tested	Resistant		Tested	Resistant	
	#	#	%	#	#	%	#	#	%
A (H3N2)	155	0	0	155	0	0	--	--	--
A (H1N1)	251	1	0.4	251	0	0	--	--	--
B	263	0	0	263	0	0	--	--	--
Total	669	1	0.1	669	0	0	--	--	--

Source: Influenza and Respiratory Viruses Section, National Microbiology Laboratory (NML), Public Health Agency of Canada

Influenza and Other Respiratory Outbreaks

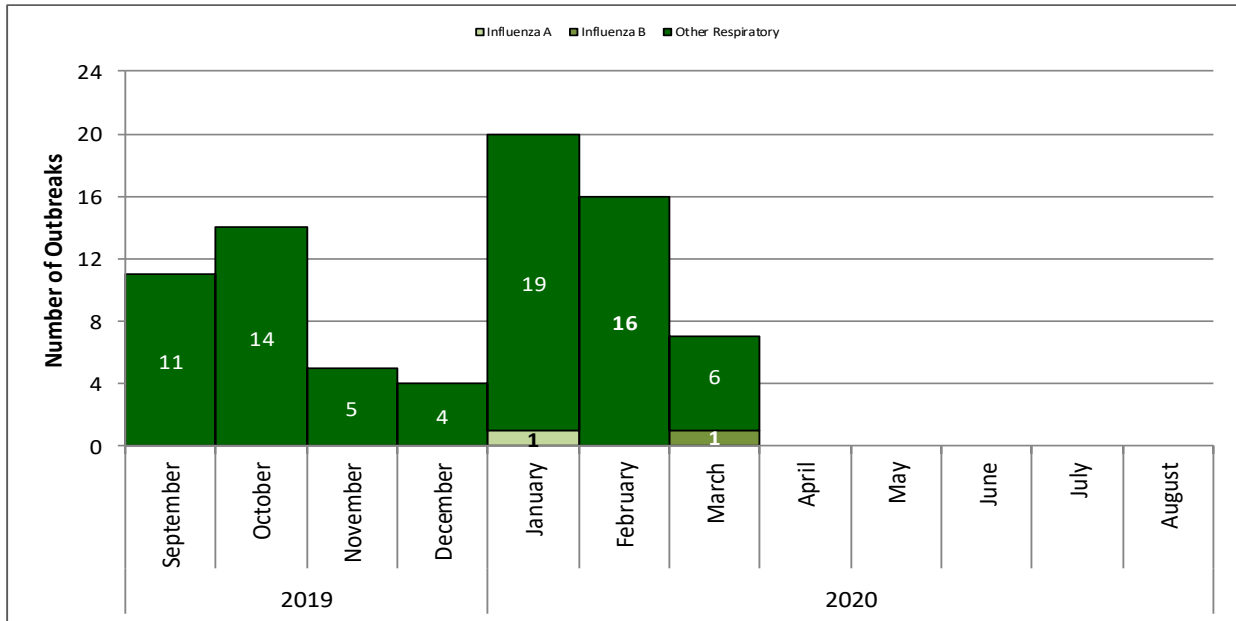


Figure 4: Number of influenza and other respiratory outbreaks, by month of onset, NL, 2019-2020

Emergency Department Influenza-like-illness

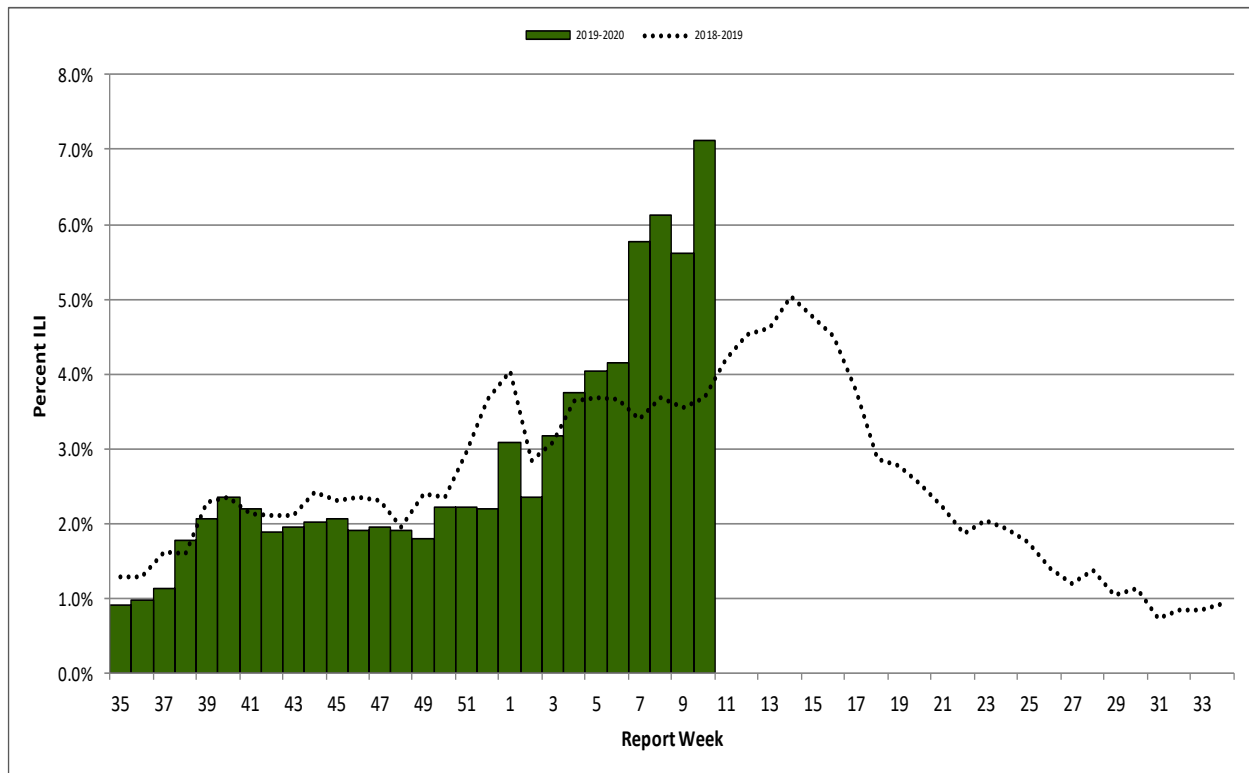


Figure 5: Percent of emergency department visits with ILI by report week, NL, 2019-2020

Source: Emergency room data provided by the four regional health authorities.

Other Respiratory Viruses

Table 3: Weekly and total number of positive respiratory virus specimens in NL, by type, 2019-2020 season

	Week 10	Total
R.S.V.	20	263
Parainfluenza virus 1	3	122
Parainfluenza virus 2	0	1
Parainfluenza virus 3	0	4
Adenovirus	2	82
Entero/Rhinovirus	3	298
hMPV	9	66



Source: Respiratory Virus Detection, Public Health Agency of Canada; Public Health and Microbiology Laboratory, Eastern Health
 *Total from August 25, 2019 to March 7, 2020.

HealthLine

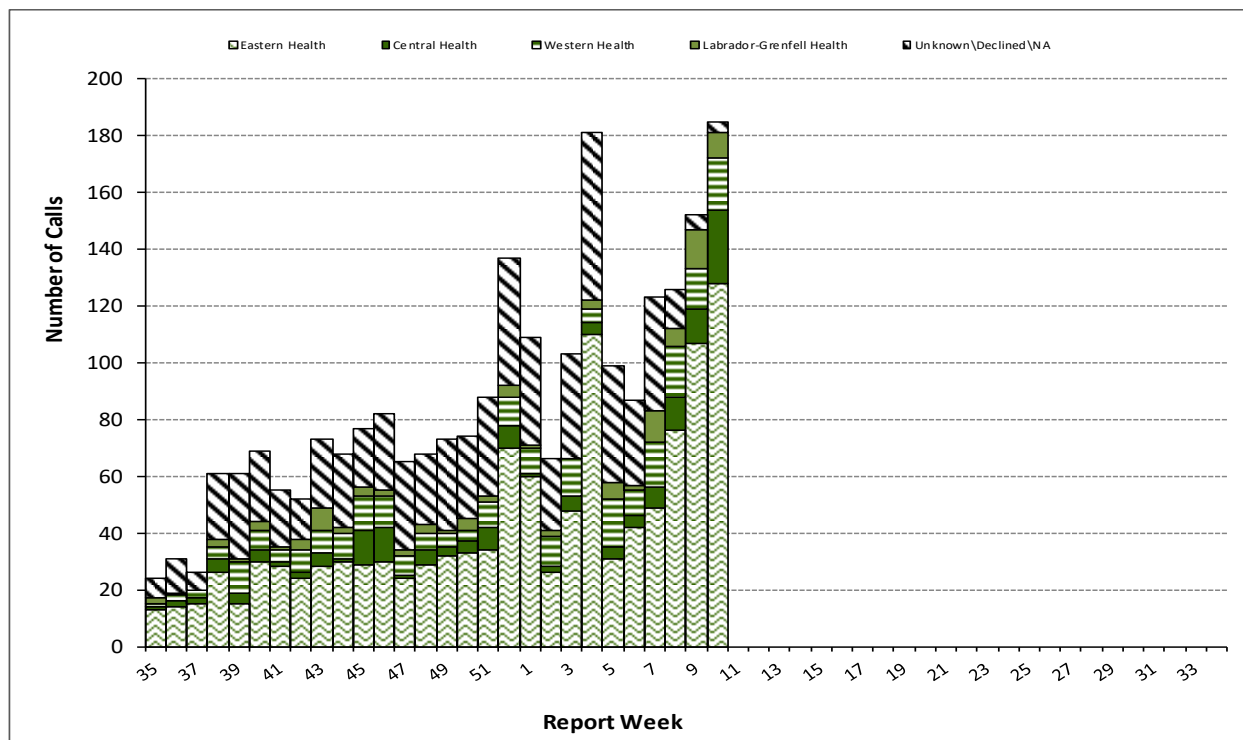


Figure 6: Number of influenza-like-illness HealthLine calls by week and RHA, NL, 2019-2020 season

Resources and Disclaimer

- ⇒ Provincial influenza statistics: <https://www.health.gov.nl.ca/health/publichealth/cdc/informationandsurveillance.html#influenza>
- ⇒ Find a Flu shot clinic in your community: http://www.health.gov.nl.ca/health/publichealth/cdc/infoforpros_edu.html
- ⇒ HealthLine phone number is 811 and website: <https://www.811healthline.ca/>
- ⇒ Public Health Laboratory website is <http://publichealthlab.ca/>
- ⇒ FluWatch: <http://healthycanadians.gc.ca/diseases-conditions-maladies-affections/disease-maladie/flu-grippe/surveillance/index-eng.php>
- ⇒ Fluctuations in data occur with each report and can be attributed to continuous reporting.