

Wait Time Information-Cataract Surgery (Sight Restoration)

Q: What is a Cataract?

A cataract is a small cloudy area in the lens of the eye that blocks the passage of light to the retina. Cataract surgery is the removal of the cataract and implantation of an artificial lens to correct vision loss. The condition affects both eyes, but usually one eye is affected earlier than the other.

Q: Where will I be referred to have this surgery?

Ask your doctor/specialist where you can have your cataract surgery done, as this procedure is performed in the following hospitals:

Eastern Health

General Hospital - Health Sciences Centre – St. John’s

Central Health

James Paton Memorial Hospital – Gander

Central Newfoundland Regional Health Centre – Grand Falls-Windsor

Western Health

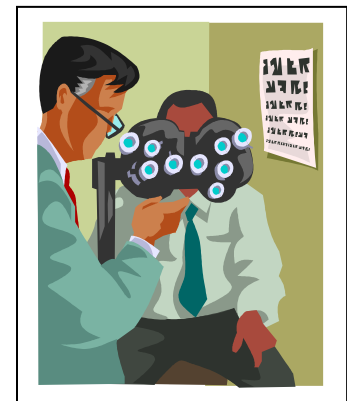
Western Memorial Regional Hospital – Corner Brook

Sir Thomas Roddick Hospital – Stephenville

Labrador-Grenfell Health

Charles S. Curtis Memorial Hospital – St. Anthony

(A visiting eye specialist travels to St. Anthony to see patients.)



Q: How are wait times measured?

For this operation, the wait time is measured from when you and your ophthalmologist decide to proceed with surgery to when the procedure is completed.

Q: What is the benchmark wait time for cataract surgery?

The national benchmark for cataract surgery is 112 days. This means that ophthalmologists and the RHAs are working together to perform the majority of cataract procedures within the 112-day target. The most recent wait times for cataract surgery are:

Table 1: Cataract Surgery (First Eye) by Region for Q2 (July 1- September 30, 2014-2015)

Region	Eastern Health	Central Health	Western Health	Labrador-Grenfell Health
Wait Time Information				
Number of first-eye cataract procedures completed	337	192	220	15
5 out of 10 patients had surgery within this number of days	59	76	14	1
9 out of 10 patients had surgery within this number of days	103	96	66	2
Percentage of patients who had surgery within 112 days	94%	93%	100%	100%

Data source: Regional Health Authorities, Newfoundland and Labrador

Notes: In keeping with data standards, outliers or cases that do not comply with the standard wait time definitions are excluded from cataract wait time calculations and Eastern and Central Health are working to address this. In Labrador-Grenfell Health, all or 100% of the First Eye cataract procedures were performed during a sessional visit by an itinerant Ophthalmologist.