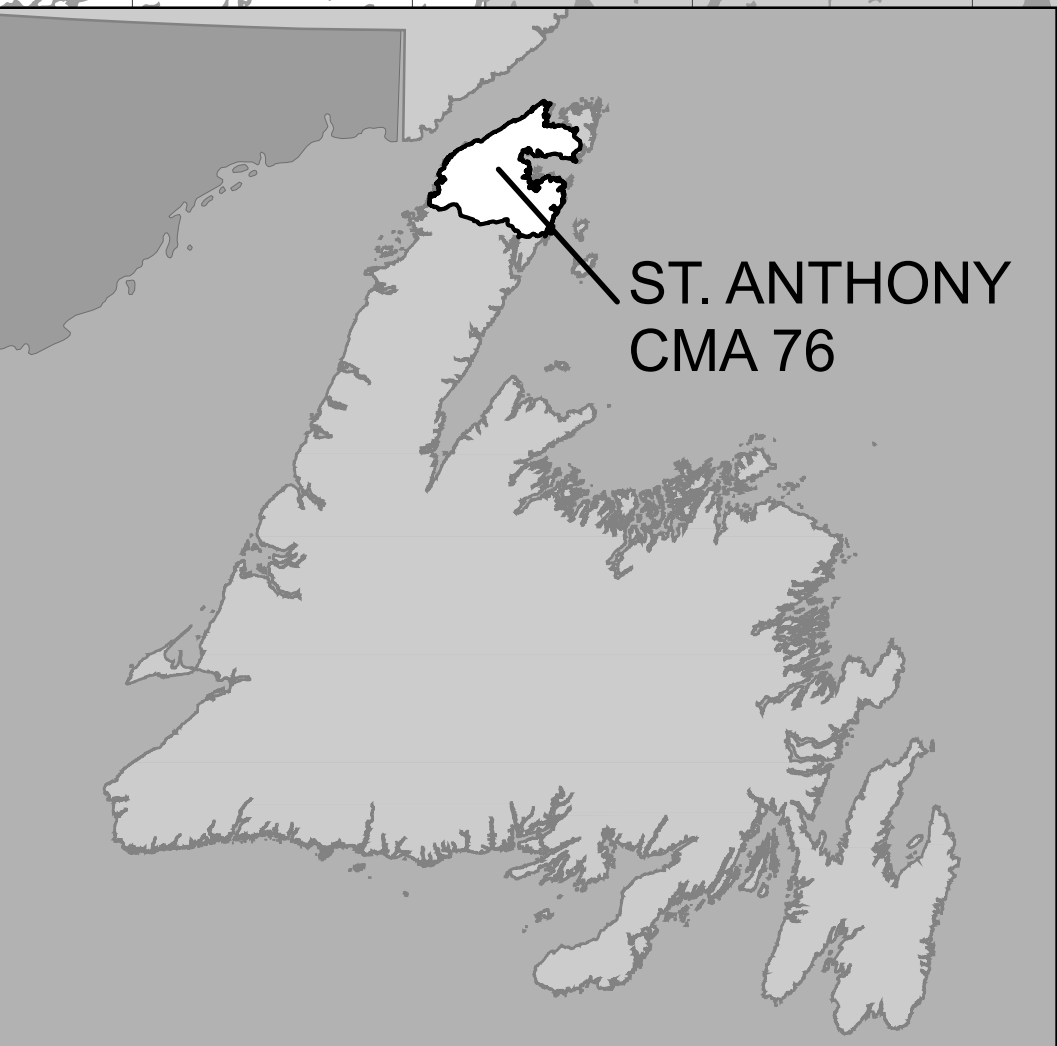
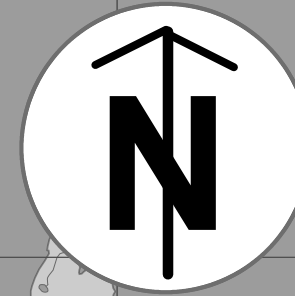


# St. Anthony Newfoundland Caribou Management Area 76



ST. ANTHONY  
CMA 76

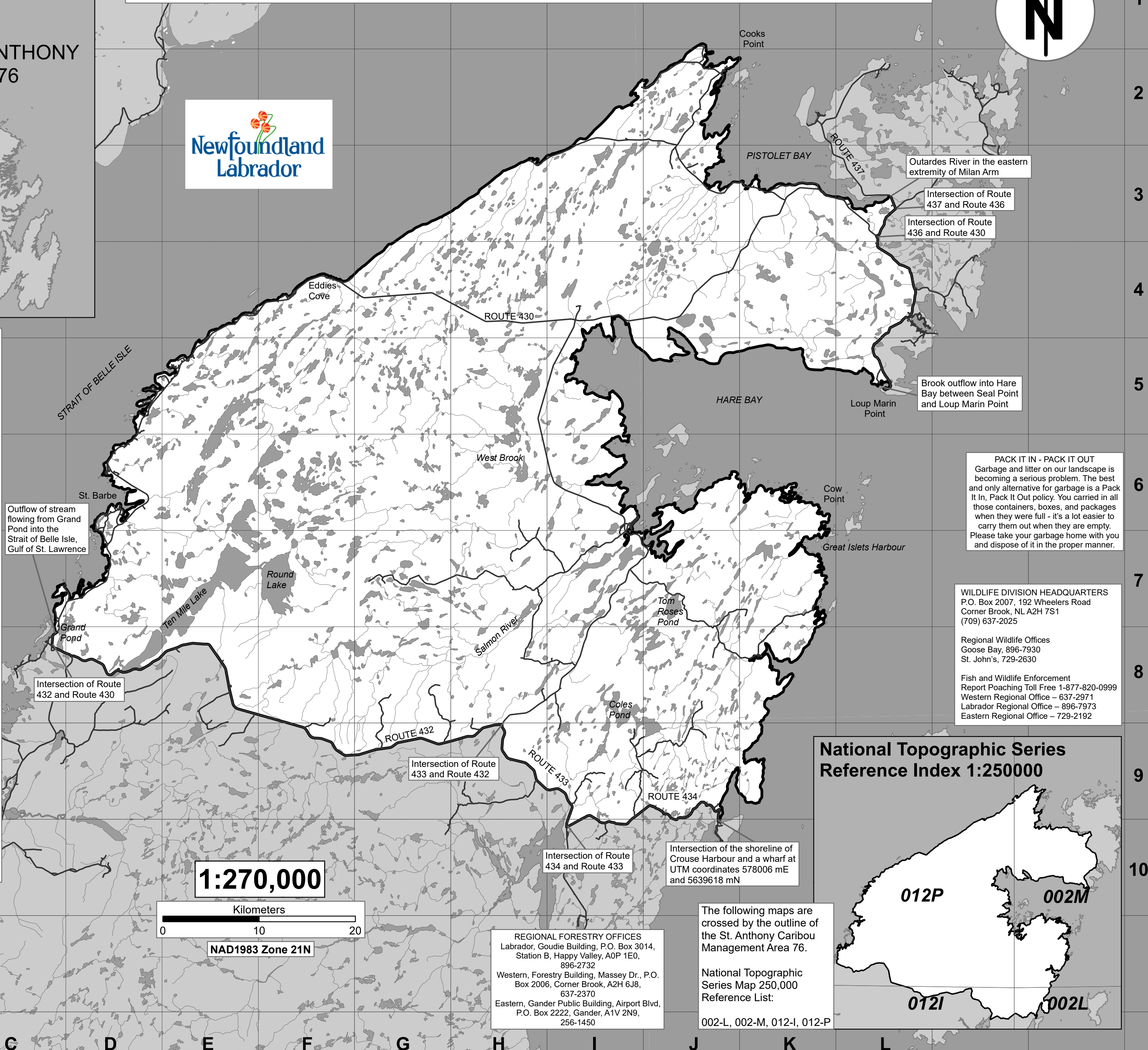


## CARIBOU MANAGEMENT AREA 76 ST. ANTHONY

All that area of the Island of Newfoundland bounded by a line beginning at the intersection of the shoreline of Crouse Harbour and a wharf at UTM coordinates 578006 metres east and 5639618 metres north; then following a straight line in a southwesterly direction to the confluence of an unnamed road and Route 434 at UTM coordinates 577742 metres east and 5639577 metres north; then following Route 434 in a northerly, then westerly direction to its intersection with Route 433; then following Route 433 in a northwesterly direction to its intersection with Route 432; then following Route 432 in a westerly direction to its intersection with Route 430; then following Route 430 in a northwesterly direction to the point where it intersects a small stream flowing from Grand Pond; then following said stream in a westerly direction to its outflow into the Strait of Belle Isle, Gulf of St. Lawrence; then following the eastern coastline of the Great Northern Peninsula in a generally northeasterly direction to Cooks Point; then following the coastline of Pistolet Bay in a generally southeasterly direction to the Outardes River in the eastern extremity of Milan Arm; then following the southern bank of the Outardes River in an easterly direction to its intersection with Route 437; then following Route 437 in a southeasterly direction to its intersection with Route 436; then following Route 436 in a southwesterly direction to its intersection with Route 430; then following Route 430 in a southerly direction to its end near Loup Marin Point; then following the closest straight line distance in a generally northerly direction to the shoreline of Goose Cove, Hare Bay; then following the coastline of Hare Bay in a generally westerly, then southerly, then easterly direction to Cow Point; then following the western coastline of the Great Northern Peninsula in a generally southwesterly direction to the point of commencement; excluding all offshore islands.

Note: This map has been prepared as a convenient reference only. It is not a legal document. The Wildlife Act and Regulations and the Annual Hunting Orders published therein should be consulted for all purposes of interpreting and applying the law. Contact the Newfoundland & Labrador Wildlife Division.

Created by: Wildlife Division  
Department of Fisheries, Forestry & Agriculture  
Date: November 2020



Outflow of stream flowing from Grand Pond into the Strait of Belle Isle, Gulf of St. Lawrence

Intersection of Route 432 and Route 430

Intersection of Route 433 and Route 432

Intersection of Route 434 and Route 433

Intersection of the shoreline of Crouse Harbour and a wharf at UTM coordinates 578006 mE and 5639618 mN

Outardes River in the eastern extremity of Milan Arm

Intersection of Route 437 and Route 436

Intersection of Route 436 and Route 430

Brook outflow into Hare Bay between Seal Point and Loup Marin Point

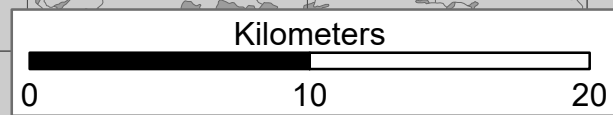
**PACK IT IN - PACK IT OUT**  
Garbage and litter on our landscape is becoming a serious problem. The best and only alternative for garbage is a Pack It In, Pack It Out policy. You carried in all those containers, boxes, and packages when they were full - it's a lot easier to carry them out when they are empty. Please take your garbage home with you and dispose of it in the proper manner.

**WILDLIFE DIVISION HEADQUARTERS**  
P.O. Box 2007, 192 Wheelers Road  
Corner Brook, NL A2H 7S1  
(709) 637-2025

Regional Wildlife Offices  
Goose Bay, 896-7930  
St. John's, 729-2630

Fish and Wildlife Enforcement  
Report Poaching Toll Free 1-877-820-0999  
Western Regional Office - 637-2971  
Labrador Regional Office - 896-7973  
Eastern Regional Office - 729-2192

**1:270,000**



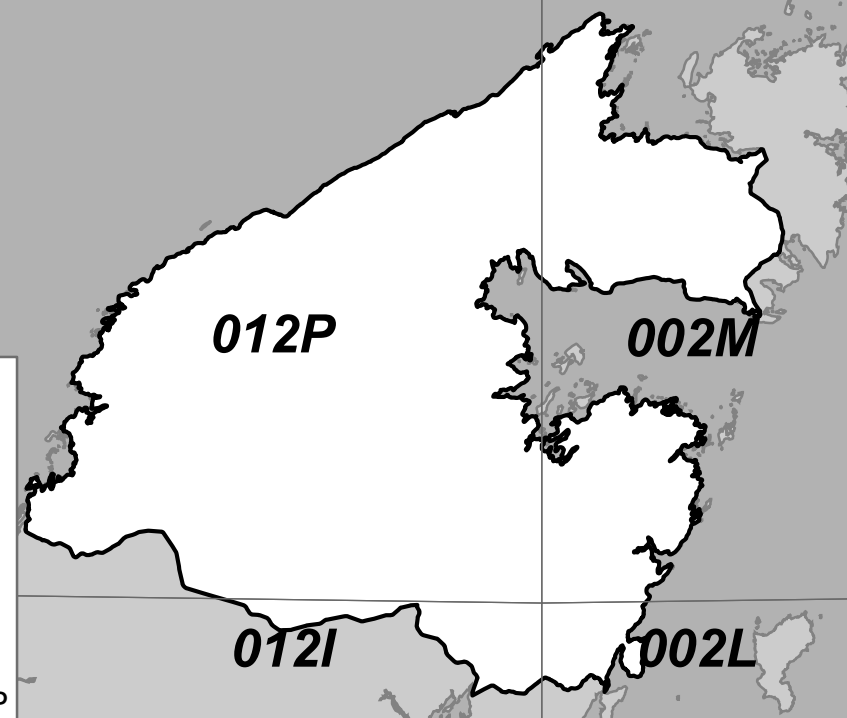
NAD1983 Zone 21N

**REGIONAL FORESTRY OFFICES**  
Labrador, Goudie Building, P.O. Box 3014,  
Station B, Happy Valley, A0P 1E0,  
896-2732  
Western, Forestry Building, Massey Dr., P.O.  
Box 2006, Corner Brook, A2H 6J8,  
637-2370  
Eastern, Gander Public Building, Airport Blvd,  
P.O. Box 2222, Gander, A1V 2N9,  
256-1450

The following maps are crossed by the outline of the St. Anthony Caribou Management Area 76.

National Topographic Series Map 250,000 Reference List:  
002-L, 002-M, 012-I, 012-P

## National Topographic Series Reference Index 1:250000



C D E F G H I J K L

1  
2  
3  
4  
5  
6  
7  
8  
9  
10