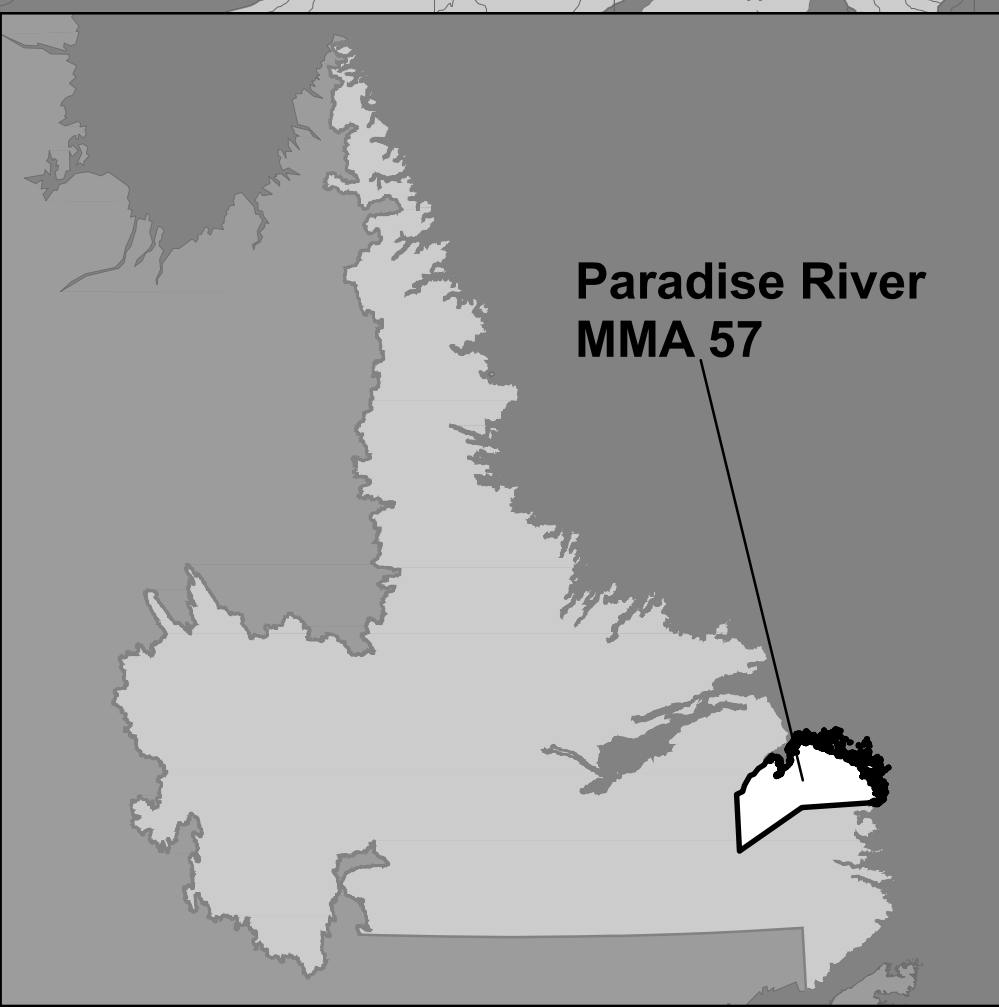
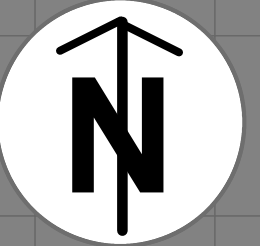


Paradise River Labrador Moose Management Area 57



**MOOSE MANAGEMENT AREA 57
PARADISE RIVER**

All that area of Labrador bounded by a line beginning at 52° 45' 00.0" North latitude and 58° 00' 00.0" West longitude; then following a straight line due north to 53° 16' 43.744" North latitude and 58° 00' 00.0" West longitude; then following a straight line due north to 53° 16' 43.744" North latitude and 58° 00' 00.0" West longitude; then following a straight line in a generally east by northeasterly direction to 53° 21' 31.443" North latitude and 57° 54' 10.973" West longitude; then following a straight line in a generally northeasterly direction to 53° 21' 31.443" North latitude and 57° 52' 04.772" West longitude; then following a straight line in a generally northeasterly direction to 53° 26' 44.160" North latitude and 57° 46' 35.463" West longitude; then following a straight line in a generally east by northeasterly direction to 53° 27' 29.556" North latitude and 57° 43' 03.431" West longitude; then following a straight line in a generally northeasterly direction to 53° 30' 24.472" North latitude and 57° 38' 36.032" West longitude; then following a straight line in a generally east by northeasterly direction to 53° 32' 23.538" North latitude and 57° 32' 41.130" West longitude; then following a straight line in a generally northeasterly direction to 53° 34' 27.708" North latitude and 57° 30' 42.171" West longitude; then following a straight line generally northeasterly direction to its intersection with the Labrador coastline at Sandwich Bay and 53° 37' 18.334" North latitude; then following the Labrador coastline in a generally southeasterly, then generally northeasterly, then generally southeasterly, then westerly direction, including all the offshore islands except those islands designated as part of Mealy Mountains National Park, to the north shore of Caplin Bay; then following the north shore of Caplin Bay in a generally westerly direction to 53° 07' 20.0" North latitude and 55° 55' 00.0" West longitude; then following a straight line due west to 53° 07' 20.0" North latitude and 57° 00' 00.0" West longitude; then following a straight line in a southwesterly direction to the point of commencement.

WILDLIFE DIVISION HEADQUARTERS
P.O. Box 2007, 192 Wheelers Road
Corner Brook, NL A2H 7S1
(709) 637-2025

Regional Wildlife Offices
Goose Bay, 896-7930
St. John's, 729-2630

Fish and Wildlife Enforcement
Report Poaching Toll Free 1-877-820-0999
Western Regional Office – 637-2971
Labrador Regional Office – 896-7973
Eastern Regional Office – 729-2192

REGIONAL FORESTRY OFFICES
Labrador, Goudie Building, P.O. Box 3014,
Station B, Happy Valley, A0P 1E0,
896-2732

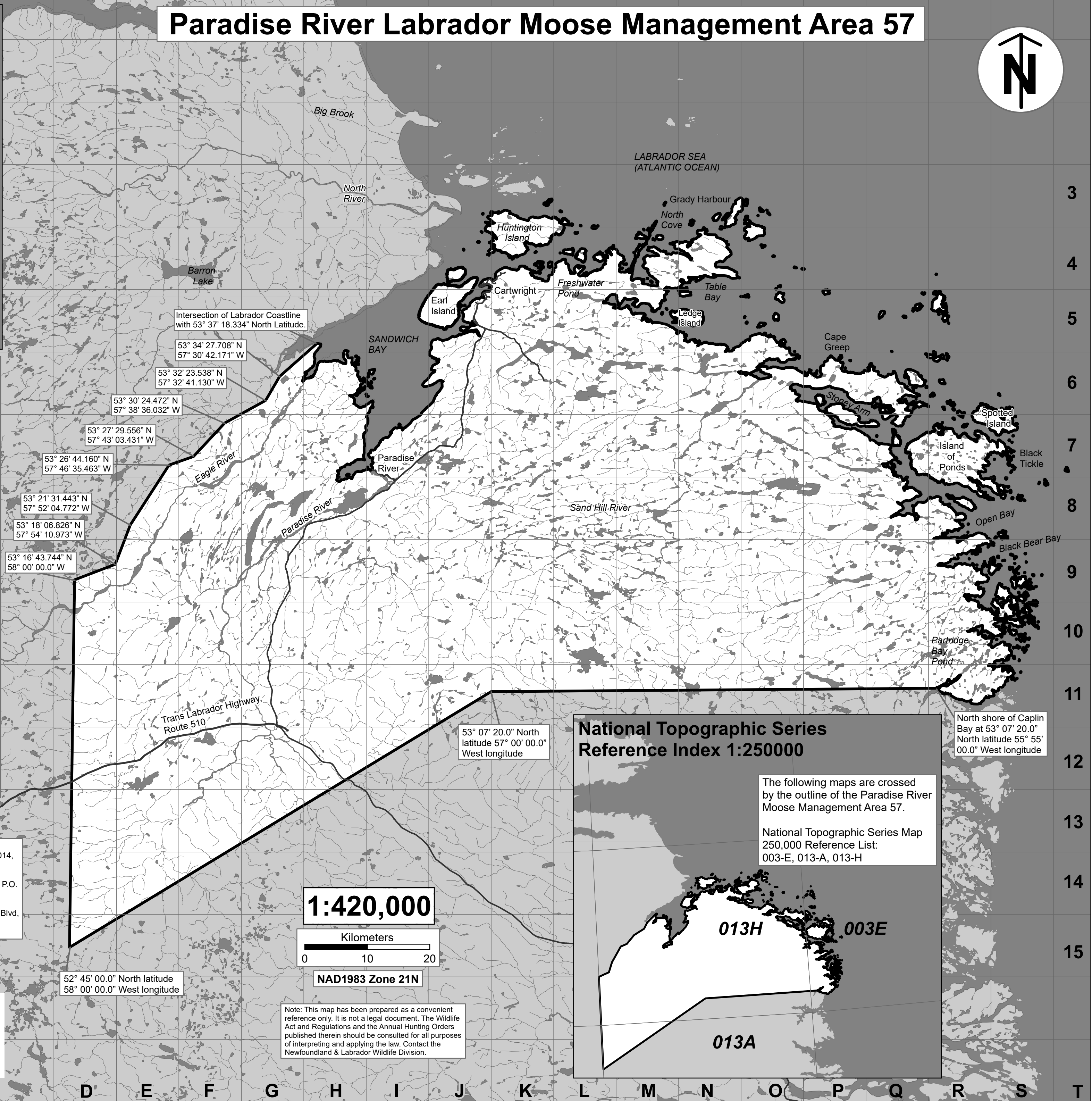
Western, Forestry Building, Massey Dr., P.O.
Box 2006, Corner Brook, A2H 6J8,
637-2370

Eastern, Gander Public Building, Airport Blvd.,
P.O. Box 2222, Gander, A1V 2N9,
256-1450

PACK IT IN – PACK IT OUT
Garbage and litter on our landscape is becoming a serious problem. The best and only alternative for garbage is a Pack It In, Pack It Out policy. You carried in all those containers, boxes, packages when they were full – it's a lot easier to carry them out when they are empty. Please take your garbage home with you and dispose of it in the proper manner.



Created by: Wildlife Division
Department of Fisheries, Forestry & Agriculture
Date: November 2020



**National Topographic Series
Reference Index 1:250000**

The following maps are crossed by the outline of the Paradise River Moose Management Area 57.

National Topographic Series Map
250,000 Reference List:
003-E, 013-A, 013-H

52° 45' 00.0" North latitude
58° 00' 00.0" West longitude

53° 07' 20.0" North
latitude 57° 00' 00.0"
West longitude

North shore of Caplin
Bay at 53° 07' 20.0"
North latitude 55° 55'
00.0" West longitude

Intersection of Labrador Coastline
with 53° 37' 18.334" North Latitude.

53° 34' 27.708" N
57° 30' 42.171" W

53° 32' 23.538" N
57° 32' 41.130" W

53° 30' 24.472" N
57° 38' 36.032" W

53° 27' 29.556" N
57° 43' 03.431" W

53° 26' 44.160" N
57° 46' 35.463" W

53° 21' 31.443" N
57° 52' 04.772" W

53° 18' 06.826" N
57° 54' 10.973" W

53° 16' 43.744" N
58° 00' 00.0" W

D E F G H I J K L M N O P Q R S T

3
4
5
6
7
8
9
10
11
12
13
14
15