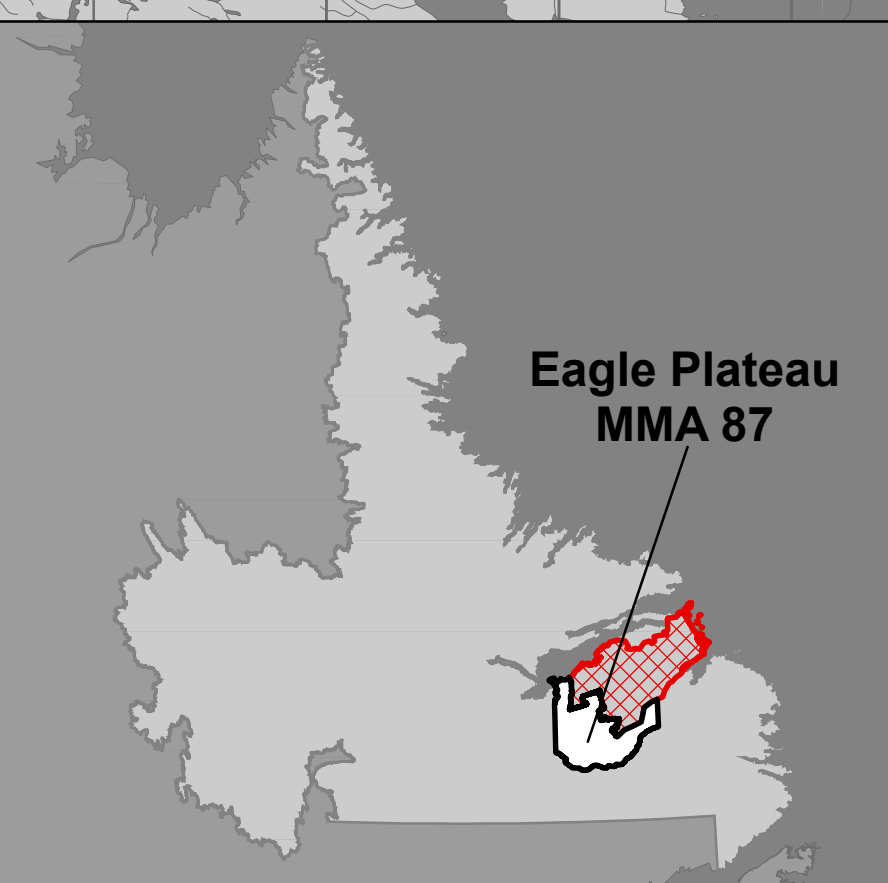
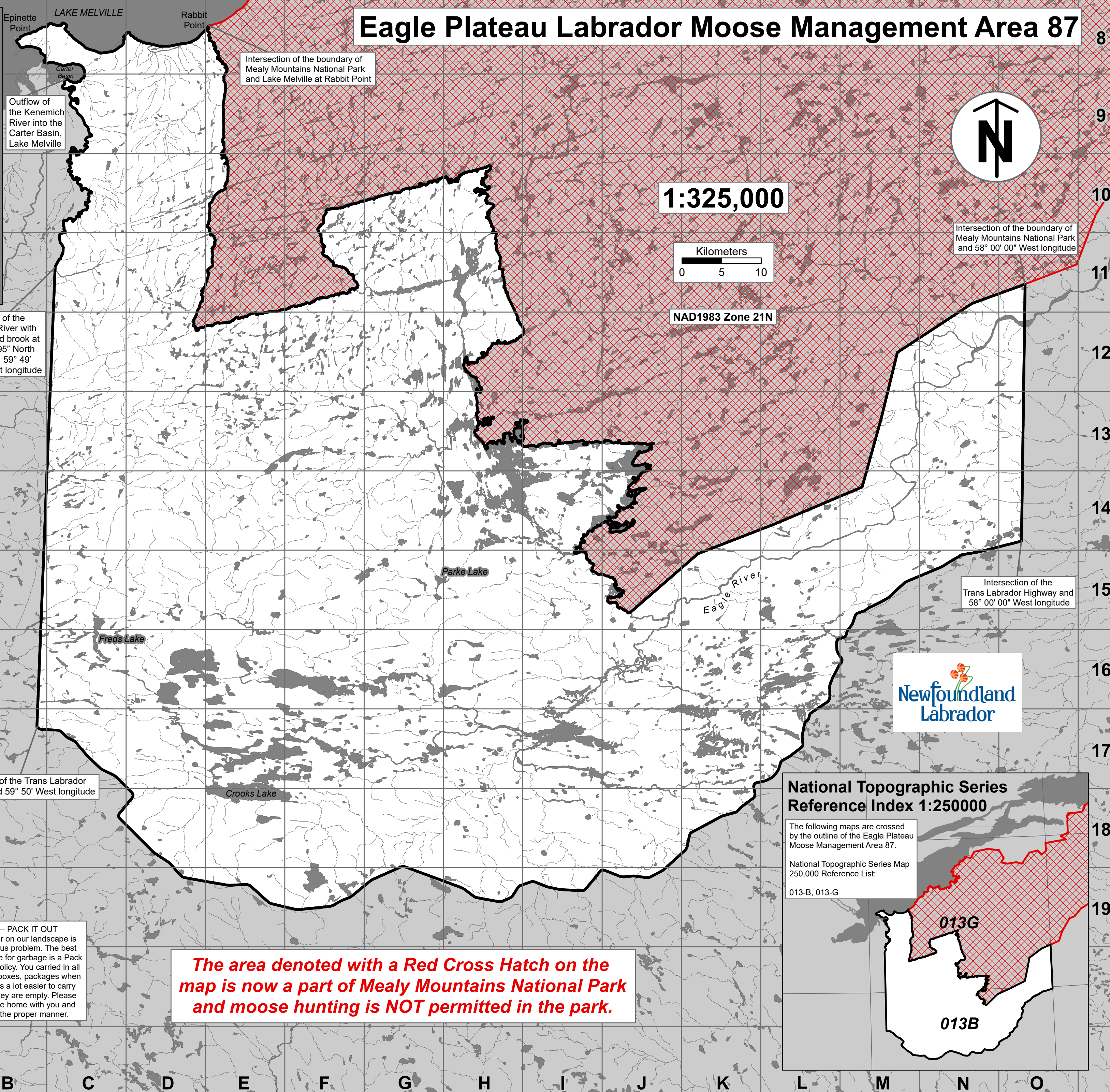


Eagle Plateau Labrador Moose Management Area 87



**Eagle Plateau
MMA 87**



Intersection of the boundary of Mealy Mountains National Park and Lake Melville at Rabbit Point

Outflow of the Kenemich River into the Carter Basin, Lake Melville

1:325,000

Kilometers
0 5 10

NAD1983 Zone 21N

Intersection of the boundary of Mealy Mountains National Park and 58° 00' 00" West longitude

Intersection of the Trans Labrador Highway and 58° 00' 00" West longitude

**MOOSE MANAGEMENT AREA 87
EAGLE PLATEAU**

All that area of Labrador bounded by a line beginning at the intersection of the Trans Labrador Highway with 58° 00' 00" West longitude; then following the Trans Labrador Highway in a generally southwesterly, then westerly, then northwesterly direction to its intersection with 59° 50' 00" West longitude; then following a straight line in a generally northerly direction to the confluence of the Kenemich River with an unnamed brook at 53° 15' 51.95" North latitude and 59° 49' 56.79" West longitude; then following said river in a generally northerly direction to its outflow into the Carter Basin, Lake Melville; then following the northern shorelines of the Carter Basin and Goose Bay Inlet in a northwesterly direction to Epinette Point; then following the shoreline of Lake Melville in a generally easterly direction to Rabbit Point; then following the boundary of Mealy Mountains National Park in a generally southerly, then generally easterly by northeasterly, then generally southeasterly, then generally northeasterly direction to intersection with 58° 00' 00" West longitude; then following a straight line due south to the point of commencement.

Confluence of the Kenemich River with an unnamed brook at 53° 15' 51.95" North latitude and 59° 49' 56.79" West longitude

Note: This map has been prepared as a convenient reference only. It is not a legal document. The Wildlife Act and Regulations and the Annual Hunting Orders published therein should be consulted for all purposes of interpreting and applying the law. Contact the Newfoundland & Labrador Wildlife Division.

WILDLIFE DIVISION HEADQUARTERS
P.O. Box 2007, 192 Wheelers Road
Corner Brook, NL A2H 7S1
(709) 637-2025

Regional Wildlife Offices
Goose Bay, 896-7930
St. John's, 729-2630

Fish and Wildlife Enforcement
Report Poaching Toll Free 1-877-820-0999
Western Regional Office – 637-2971
Labrador Regional Office – 896-7973
Eastern Regional Office – 729-2192

REGIONAL FORESTRY OFFICES
Labrador, Goudie Building, P.O. Box 3014,
Station B, Happy Valley, A0P 1E0,
896-2732
Western, Forestry Building, Massey Dr., P.O.
Box 2006, Corner Brook, A2H 6J8,
637-2370
Eastern, Gander Public Building, Airport Blvd,
P.O. Box 2222, Gander, A1V 2N9,
256-1450

PACK IT IN – PACK IT OUT
Garbage and litter on our landscape is becoming a serious problem. The best and only alternative for garbage is a Pack It In, Pack It Out policy. You carried in all those containers, boxes, packages when they were full - it's a lot easier to carry them out when they are empty. Please take your garbage home with you and dispose of it in the proper manner.

The area denoted with a Red Cross Hatch on the map is now a part of Mealy Mountains National Park and moose hunting is NOT permitted in the park.



**National Topographic Series
Reference Index 1:250000**

The following maps are crossed by the outline of the Eagle Plateau Moose Management Area 87.

National Topographic Series Map 250,000 Reference List:
013-B, 013-G

