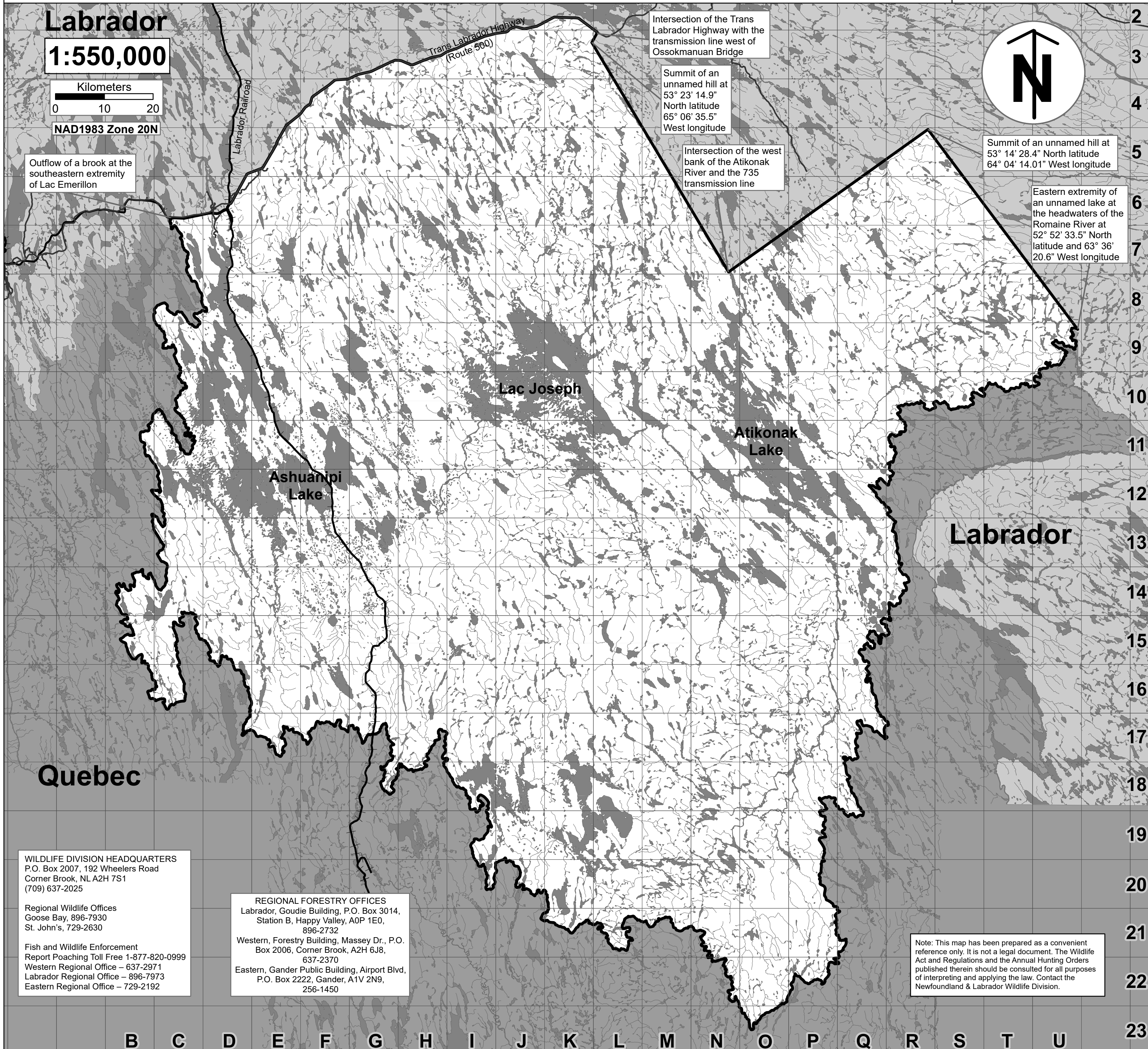
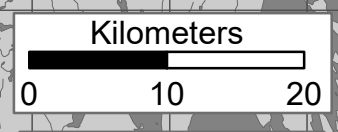


Atikonak Labrador Moose Management Area 94

All that area of Labrador bounded by a line beginning at the Labrador-Quebec boundary at 52° 52' 33.5" North latitude and 63° 36' 20.6" West longitude; then following a straight line in a generally northwesterly direction to the summit of a unnamed hill at 53° 14' 28.4" North latitude and 64° 04' 14.01" West longitude; then following a straight line in a generally southwesterly direction to the intersection of the west bank of the Atikonak River and the 735 transmission line; then following a straight line in a generally northwesterly direction to the summit of a unnamed hill at 53° 23' 14.9" North latitude and 65° 06' 35.5" West longitude; then following a straight line in a generally northeasterly direction to the intersection of the Trans Labrador Highway (Route 500) with the transmission line west of the Ossokmanuan Bridge; then following the Trans Labrador Highway (Route 500) in a generally westerly, then southwesterly direction to its intersection with Quebec North Shore-Labrador railroad; then following said railroad in a generally southerly direction to Ross Bay Junction; then following the railroad in a generally northwesterly then westerly direction to the eastern shoreline of Lac Emerillon; then following the eastern shoreline of Lac Emerillon in a generally southerly direction to the outflow of a brook at its southeastern extremity; then following a straight line due south to the Labrador-Quebec boundary; then following the Labrador-Quebec boundary in a generally southwesterly, then westerly, then northerly, then northeasterly direction to the point of commencement.



Labrador
1:550,000



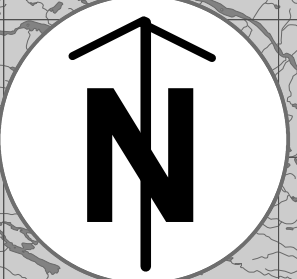
NAD1983 Zone 20N

Outflow of a brook at the southeastern extremity of Lac Emerillon

Intersection of the Trans Labrador Highway with the transmission line west of Ossokmanuan Bridge

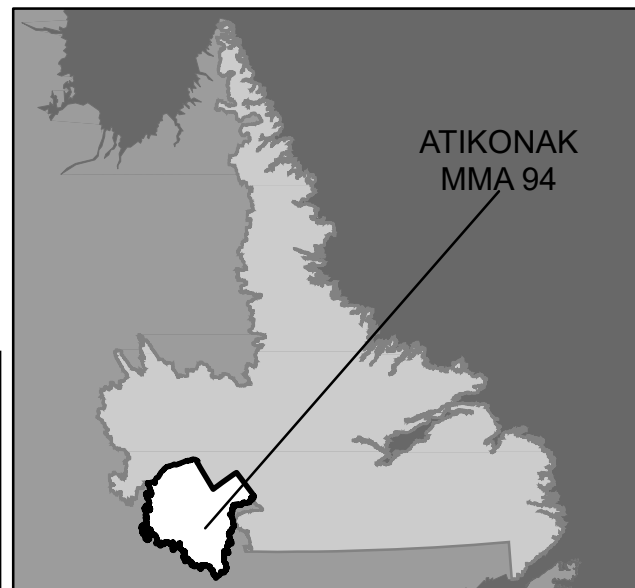
Summit of an unnamed hill at 53° 23' 14.9" North latitude 65° 06' 35.5" West longitude

Intersection of the west bank of the Atikonak River and the 735 transmission line



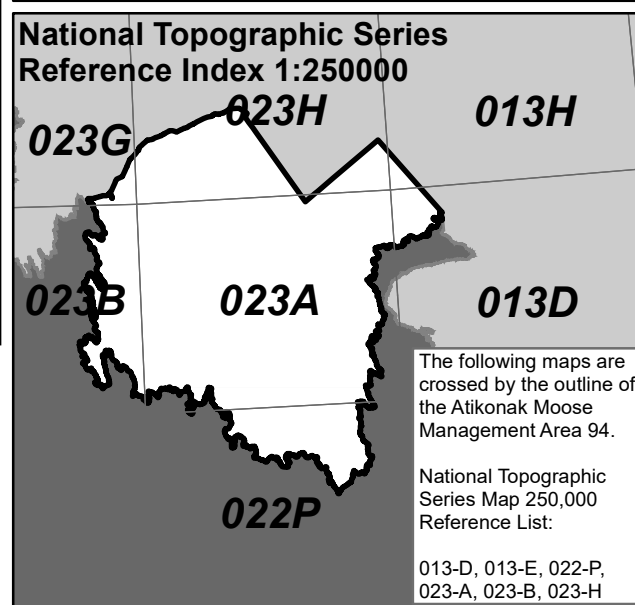
Summit of an unnamed hill at 53° 14' 28.4" North latitude 64° 04' 14.01" West longitude

Eastern extremity of an unnamed lake at the headwaters of the Romaine River at 52° 52' 33.5" North latitude and 63° 36' 20.6" West longitude



ATIKONAK
MMA 94

PACK IT IN, PACK IT OUT
Garbage and litter on our landscape is becoming a serious problem. The best and only alternative for garbage is a Pack It In, Pack It Out policy. You carried in all those containers, boxes - packages when they were full, it's a lot easier to carry them out when they are empty. Please take your garbage home with you and dispose of it in the proper manner.



WILDLIFE DIVISION HEADQUARTERS
P.O. Box 2007, 192 Wheelers Road
Corner Brook, NL A2H 7S1
(709) 637-2025

Regional Wildlife Offices
Goose Bay, 896-7930
St. John's, 729-2630

Fish and Wildlife Enforcement
Report Poaching Toll Free 1-877-820-0999
Western Regional Office - 637-2971
Labrador Regional Office - 896-7973
Eastern Regional Office - 729-2192

REGIONAL FORESTRY OFFICES
Labrador, Goudie Building, P.O. Box 3014, Station B, Happy Valley, A0P 1E0, 896-2732
Western, Forestry Building, Massey Dr., P.O. Box 2006, Corner Brook, A2H 6J8, 637-2370
Eastern, Gander Public Building, Airport Blvd., P.O. Box 2222, Gander, A1V 2N9, 256-1450

Note: This map has been prepared as a convenient reference only. It is not a legal document. The Wildlife Act and Regulations and the Annual Hunting Orders published therein should be consulted for all purposes of interpreting and applying the law. Contact the Newfoundland & Labrador Wildlife Division.