

# St. Anthony Newfoundland Moose Management Area 1



ST. ANTHONY  
MMA 1



Note: This map has been prepared as a convenient reference only. It is not a legal document. The Wildlife Act and Regulations and the Annual Hunting Orders published therein should be consulted for all purposes of interpreting and applying the law. Contact the Newfoundland & Labrador Wildlife Division.

**WILDLIFE DIVISION HEADQUARTERS**  
P.O. Box 2007, 192 Wheelers Road  
Corner Brook, NL A2H 7S1  
(709) 637-2025

**Regional Wildlife Offices**  
Goose Bay, 896-7930  
St. John's, 729-2630

**Fish and Wildlife Enforcement**  
Report Poaching Toll Free 1-877-820-0999  
Western Regional Office – 637-2971  
Labrador Regional Office – 896-7973  
Eastern Regional Office – 729-2192

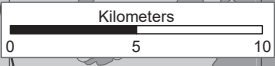
Bridge on the Viking Trail, Route 430 at  
Eddies Cove at UTM coordinates  
538272 mE and 5695888 mN

**MOOSE MANAGEMENT AREA 1  
ST. ANTHONY**

All that area of the Island of Newfoundland bounded by a line commencing at a bridge on the Viking Trail, Route 430 at Eddies Cove given by the coordinates 538272 meters east and 5695888 meters north; then following the eastern bank of the river flowing under said bridge in a generally northerly direction to the coastline of the Great Northern Peninsula; then following the coastline of the Great Northern Peninsula along the Strait of Belle Isle in a generally northeasterly direction to Cape Norman; then following the coastlines of Cape Norman Bay, Pistolet Bay, Ha Ha Bay, Savage Cove, Sacred Bay and Hay Cove in generally southerly, then easterly, then northwesterly, then northeasterly, then easterly direction to Cobbler Point; then following the eastern coastline of the Great Northern Peninsula in a generally south westerly direction to Goose Cape; then following the northern coastline of Hare Bay in a generally westerly direction to Northeast Stream; then following the western bank of Northeast Stream in a generally northerly direction to its intersection with a point on the Viking Trail, Route 430 at UTM coordinates 568541 metres east and 5691775 metres north; then following the Viking Trail in a generally westerly direction to the point of commencement, excluding all offshore islands except Quirpon Island.

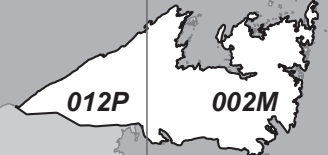
Created by: Wildlife Division  
Department of Fisheries, Forestry & Agriculture  
Date: October 2020

**1:150,000**



NAD1983 Zone 21N

**National Topographic Series  
Reference Index 1:250000**



**PACK IT IN - PACK IT OUT**  
Garbage and litter on our landscape is becoming a serious problem. The best and only alternative for garbage is a Pack It In, Pack It Out policy. You carried in all those containers, boxes - packages when they were full; it's a lot easier to carry them out when they are empty. Please take your garbage home with you and dispose of it in the proper manner.

**REGIONAL FORESTRY OFFICES**  
Labrador, Guide Building, P.O. Box 3014,  
896-2732  
Station B, Happy Valley, A0P 1E0,  
Western, Forestry Building, Massey Dr., P.O.  
Box 2006, Corner Brook, A2H 6J8,  
637-2370  
Eastern, Gander Public Building, Airport Blvd.,  
P.O. Box 2222, Gander, A1V 2N9,  
256-1450

The following maps are  
crossed by the outline of the  
St. Anthony Moose  
Management Area 1.

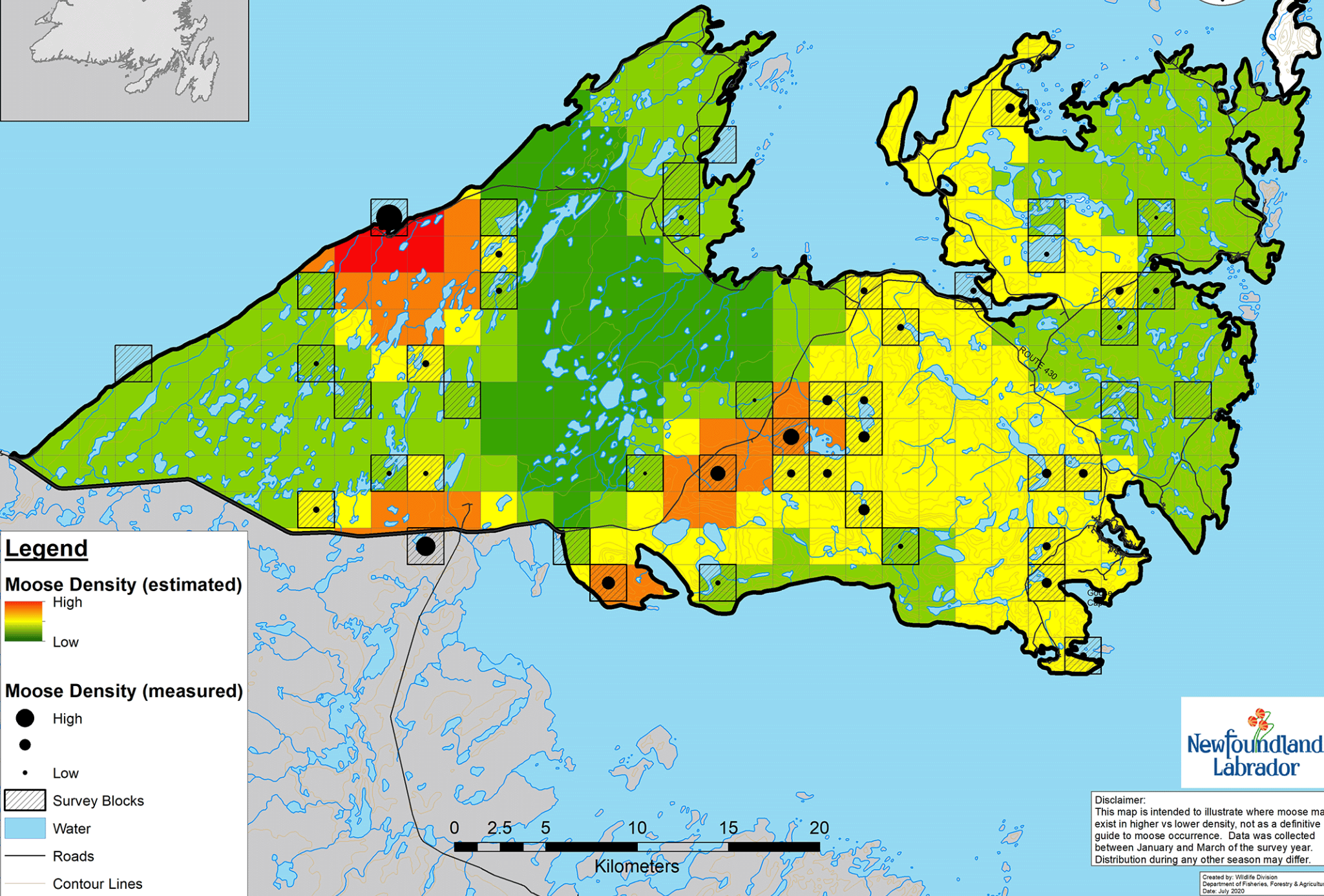
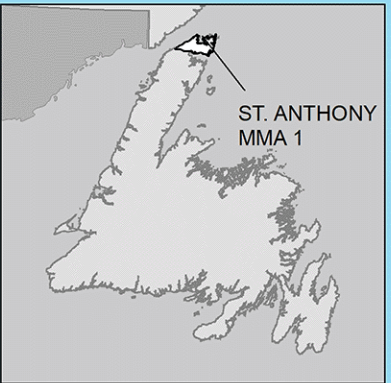
National Topographic  
Series Map 250,000  
Reference List:  
002-M, 012-P

B C D E F G H I

2  
3  
4  
5  
6

# MMA 1: St. Anthony

## Moose Winter Distribution (Estimated): 2018 survey



**Legend**

**Moose Density (estimated)**

High

Low

**Moose Density (measured)**

High

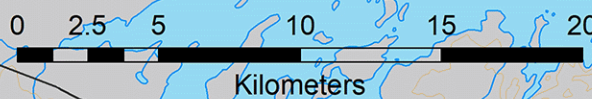
Low

Survey Blocks

Water

Roads

Contour Lines



Disclaimer:  
This map is intended to illustrate where moose may exist in higher vs lower density, not as a definitive guide to moose occurrence. Data was collected between January and March of the survey year. Distribution during any other season may differ.