

# Portland Creek Newfoundland Moose Management Area 2



PORTLAND  
CREEK  
MMA 2



## MOOSE MANAGEMENT AREA 2 PORTLAND CREEK

All that area of the Island of Newfoundland bounded by a line beginning at a point northeast of Shallow Bay on the Gulf of St. Lawrence at UTM coordinates 445004 metres east and 5536128 metres north; then following the coastline in a generally northeasterly direction to the mouth of Eddies Brook at Eddies Cove West; then following the north bank of said brook in a generally southeasterly direction to UTM coordinates 487996 metres east and 5622053 metres north; then following a straight line in a southeasterly direction to the southern extremity of Rocky Stint Pond at the headwaters of Soufflets River at UTM coordinates 518370 metres east and 5596857 metres north; then following a straight line in a southwesterly direction to the southeastern extremity of Middle Gulch at UTM coordinates 513479 metres east and 5594856 metres north; then following a straight line in a southwesterly direction to the western extremity of an unnamed lake at UTM coordinates 498901 metres east and 5586818 metres north; then following a straight line in a southwesterly direction to UTM coordinates 493900 metres east and 5580245 metres north; then following a straight line in a southwesterly direction to the outflow of a brook at an unnamed lake at UTM coordinates 484823 metres east and 5565024 metres north; then following a straight line in a southwesterly direction to the summit of Gros Pate at UTM coordinates 474504 metres east and 5562405 metres north; then following a straight line in a southwesterly direction to an unnamed peak at UTM coordinates 471484 metres east and 5560140 metres north; then following a straight line in a southeasterly direction to UTM coordinates 476288 metres east and 5550252 metres north; then following a straight line in a southwesterly direction to the eastern bank of an unnamed brook at UTM coordinates 474676 metres east and 5548673 metres north; then following a straight line in a southwesterly direction to the confluence of the unnamed brooks at UTM coordinates 464734 metres east and 5531834 metres north; then following a straight line in a southwesterly direction to its intersection with the Gros Morne National Park boundary at UTM coordinates 461821 metres east and 5531131 metres north; then following a straight line in a northwesterly direction along the Gros Morne National Park boundary to UTM coordinates 459789 metres east and 5532233 metres north; then following a straight line in a northwesterly direction to the point of commencement; excluding all offshore islands.

**1:260,000**



NAD1983 Zone 21N

STRAIT OF BELLE ISLE

Point northeast of Shallow Bay  
UTM coordinates 445004 mE and 5536128 mN

Gros Morne National Park boundary at UTM coordinates 459789 mE and 5532233 mN

Gros Morne National Park boundary at UTM coordinates 461821 mE and 5531131 mN

Confluence of the unnamed brooks at UTM coordinates 464734 mE and 5531834 mN

Eastern bank of an unnamed brook at UTM coordinates 474676 mE and 5548673 mN

UTM coordinates 476288 mE and 5550252 mN

Unnamed peak at UTM coordinates 471484 mE and 5560140 mN

Summit of Gros Pate at UTM coordinates 474504 mE and 5562405 mN

Brook outflow on the unnamed lake at UTM coordinates 484823 mE and 5565024 mN

UTM coordinates 493900 mE and 5580245 mN

Western extremity of the unnamed lake at UTM coordinates 498901 mE and 5586818 mN

Middle Gulch at UTM coordinates 513479 mE and 5594856 mN

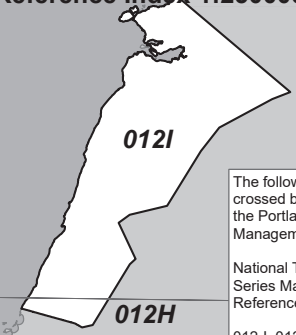
Rocky Stint Pond at UTM coordinates 518370 mE and 5596857 mN

**PACK IT IN - PACK IT OUT**  
Garbage and litter on our landscape is becoming a serious problem. The best and only alternative for garbage is a Pack It In, Pack It Out policy. You carried in all those containers, boxes - packages when they were full; it's a lot easier to carry them out when they are empty. Please take your garbage home with you and dispose of it in the proper manner.

**REGIONAL FORESTRY OFFICES**  
Labrador, Goudie Building, P.O. Box 3014, Station B, Happy Valley, A0P 1E0, 896-2732  
Western, Forestry Building, Massey Dr., P.O. Box 2006, Corner Brook, A2H 6J8, 637-2370  
Eastern, Gander Public Building, Airport Blvd., P.O. Box 2222, Gander, A1V 2N9, 256-1450

**WILDLIFE DIVISION HEADQUARTERS**  
P.O. Box 2007, 192 Wheelers Road  
Corner Brook, NL A2H 7S1  
(709) 637-2025  
  
Regional Wildlife Offices  
Goose Bay, 896-7930  
St. John's, 729-2630  
  
Fish and Wildlife Enforcement  
Report Poaching Toll Free 1-877-820-0999  
Western Regional Office - 637-2971  
Labrador Regional Office - 896-7973  
Eastern Regional Office - 729-2192

## National Topographic Series Reference Index 1:250000



The following maps are crossed by the outline of the Portland Creek Moose Management Area 2.

National Topographic Series Map 250,000 Reference List:  
012-I, 012-H

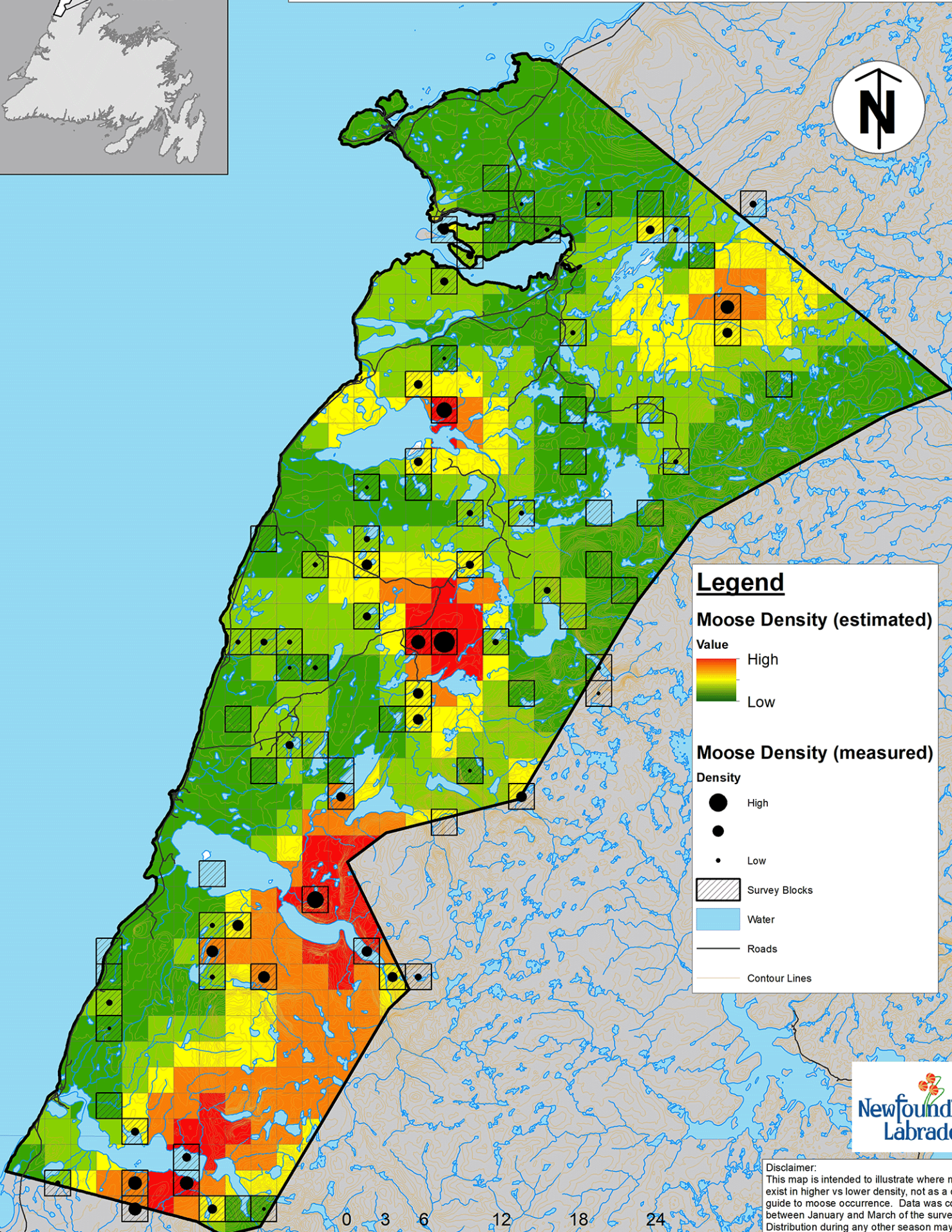
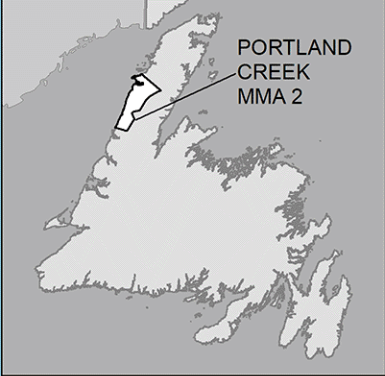
Note: This map has been prepared as a convenient reference only. It is not a legal document. The Wildlife Act and Regulations and the Annual Hunting Orders published therein should be consulted for all purposes of interpreting and applying the law. Contact the Newfoundland & Labrador Wildlife Division.

Created by: Wildlife Division  
Department of Fisheries, Forestry & Agriculture  
Date: October 2020

B C D E F G H I J 10 11



# MMA 2: Portland Creek Moose Winter Distribution (Estimated): 2018 survey



**Legend**

**Moose Density (estimated)**  
Value  
High  
Low

**Moose Density (measured)**  
Density  
High  
Low

Survey Blocks  
Water  
Roads  
Contour Lines



Disclaimer:  
This map is intended to illustrate where moose may exist in higher vs lower density, not as a definitive guide to moose occurrence. Data was collected between January and March of the survey year. Distribution during any other season may differ.

