

Harbour Deep Newfoundland Moose Management Area 3



HARBOUR DEEP MMA 3

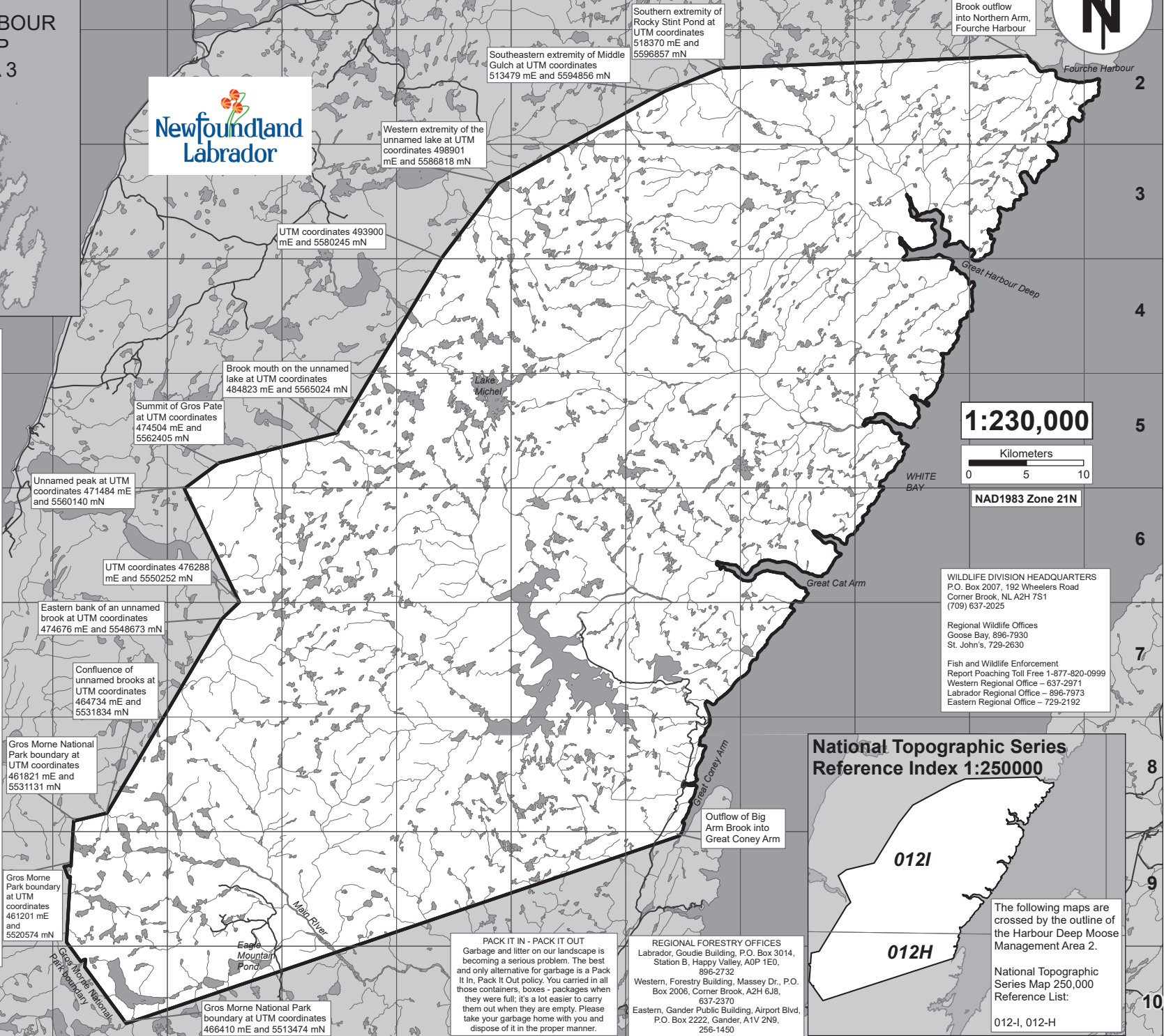


MOOSE MANAGEMENT AREA 3 HARBOUR DEEP

All that area of the Island of Newfoundland bounded by a line beginning at UTM coordinates 466410 metres east and 5513474 metres north on the Gros Morne National Park boundary; then following the Gros Morne National Park boundary in a generally northwesterly direction to UTM coordinates 461201 metres east and 5520574 metres north; then following the Gros Morne National Park boundary in a generally northerly direction to UTM coordinates 461821 metres east and 5531131 metres north; then following a straight line in a northeasterly direction to the confluence of unnamed brooks at UTM coordinates 464734 metres east and 5531834 metres north; then following a straight line in a northeasterly direction to the eastern bank of an unnamed brook at UTM coordinates 474676 metres east and 5548673 metres north; then following a straight line in a northeasterly direction to UTM coordinates 476288 metres east and 5550252 metres north; then following a straight line in a northwesterly direction to an unnamed peak at UTM coordinates 471484 metres east and 5560140 metres north; then following a straight line in a northeasterly direction to the summit of Gros Pate at UTM coordinates 474504 metres east and 5562405 metres north; then following a straight line in a northeasterly direction to the mouth of a brook on the unnamed lake at UTM coordinates 484823 metres east and 5565024 metres north; then following a straight line in a northeasterly direction to the southeastern extremity of Middle Gulch at UTM coordinates 513479 metres east and 5594856 metres north; then following a straight line in a northeasterly direction to the southern extremity of Rocky Stint Pond at the headwaters of Soufflets River at UTM coordinates 518370 metres east and 5596857 metres north; then following a straight line in a generally easterly direction to the brook outflow into Northern Arm, at the head of Fourche Harbour; then following the eastern coastline of the Great Northern Peninsula in a generally southwesterly direction to a point on the northwestern bank of the outflow of Big Arm Brook into Great Coney Arm; then following a straight line in a generally southwesterly direction to the point of commencement; excluding all offshore islands.

Note: This map has been prepared as a convenient reference only. It is not a legal document. The Wildlife Act and Regulations and the Annual Hunting Orders published therein should be consulted for all purposes of interpreting and applying the law. Contact the Newfoundland & Labrador Wildlife Division.

Created by: Wildlife Division
Department of Fisheries, Forestry & Agriculture
Date: October 2020



UTM coordinates 493900 mE and 5580245 mN

Western extremity of the unnamed lake at UTM coordinates 498901 mE and 5586818 mN

Southeastern extremity of Middle Gulch at UTM coordinates 513479 mE and 5594856 mN

Southern extremity of Rocky Stint Pond at UTM coordinates 518370 mE and 5596857 mN

Brook outflow into Northern Arm, Fourche Harbour

Brook mouth on the unnamed lake at UTM coordinates 484823 mE and 5565024 mN

Summit of Gros Pate at UTM coordinates 474504 mE and 5562405 mN

Unnamed peak at UTM coordinates 471484 mE and 5560140 mN

UTM coordinates 476288 mE and 5550252 mN

Eastern bank of an unnamed brook at UTM coordinates 474676 mE and 5548673 mN

Confluence of unnamed brooks at UTM coordinates 464734 mE and 5531834 mN

Gros Morne National Park boundary at UTM coordinates 461201 mE and 5531131 mN

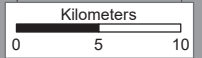
Gros Morne Park boundary at UTM coordinates 461201 mE and 5520574 mN

Gros Morne National Park boundary at UTM coordinates 466410 mE and 5513474 mN

PACK IT IN - PACK IT OUT
Garbage and litter on our landscape is becoming a serious problem. The best and only alternative for garbage is a Pack It In, Pack It Out policy. You carried in all those containers, boxes - packages when they were full, it's a lot easier to carry them out when they are empty. Please take your garbage home with you and dispose of it in the proper manner.

REGIONAL FORESTRY OFFICES
Labrador, Goudie Building, P.O. Box 3014, Station B, Happy Valley, A0P 1E0, 896-2732
Western, Forestry Building, Massey Dr., P.O. Box 2006, Corner Brook, A2H 6J8, 637-2370
Eastern, Gander Public Building, Airport Blvd., P.O. Box 2222, Gander, A1V 2N9, 256-1450

1:230,000



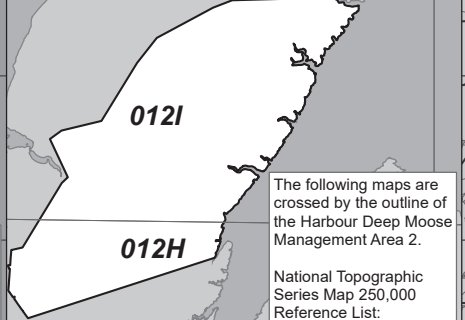
NAD1983 Zone 21N

WILDLIFE DIVISION HEADQUARTERS
P.O. Box 2007, 192 Wheelers Road
Corner Brook, NL A2H 7S1
(709) 637-2025

Regional Wildlife Offices
Goose Bay, 896-7930
St. John's, 729-2630

Fish and Wildlife Enforcement
Report Poaching Toll Free 1-877-820-0999
Western Regional Office - 637-2971
Labrador Regional Office - 896-7973
Eastern Regional Office - 729-2192

National Topographic Series Reference Index 1:250000



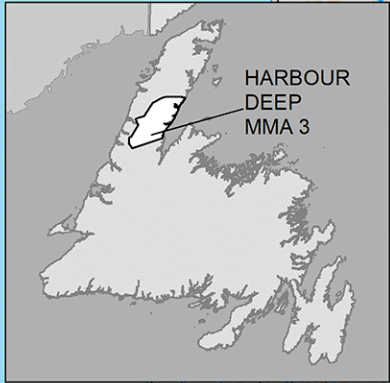
The following maps are crossed by the outline of the Harbour Deep Moose Management Area 2.

National Topographic Series Map 250,000 Reference List:
012-I, 012-H

B C D E F G H I J K

MMA 3: Harbour Deep

Moose Winter Distribution (Estimated): 2021 Survey



Legend

Moose Density (estimated)

Value

High
Low

Moose Density (measured)

Density

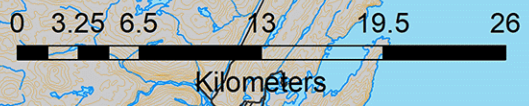
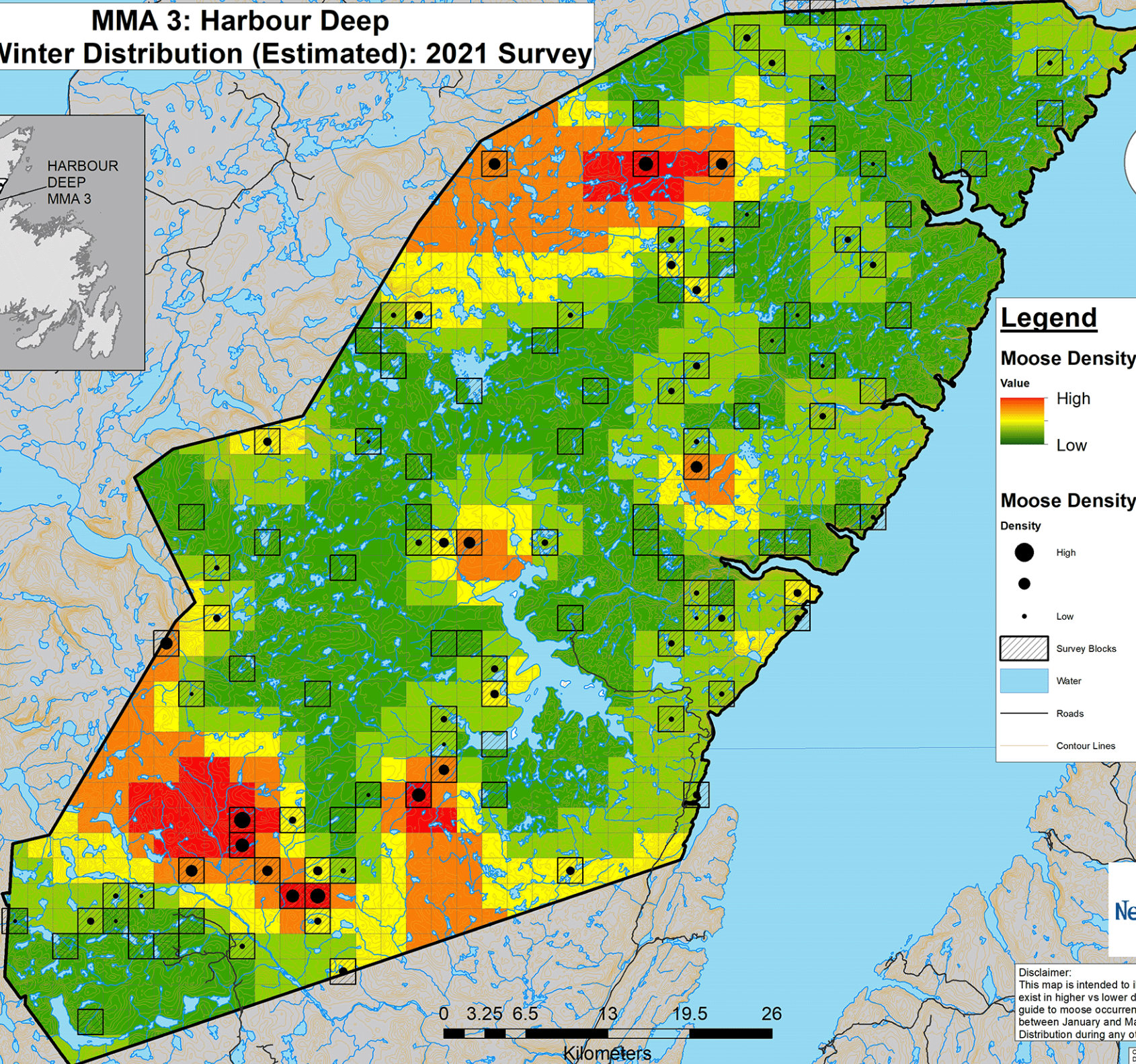
- High
- Low

▨ Survey Blocks

■ Water

— Roads

— Contour Lines



Disclaimer:
This map is intended to illustrate where moose may exist in higher vs lower density, not as a definitive guide to moose occurrence. Data was collected between January and March of the survey year. Distribution during any other season may differ.

