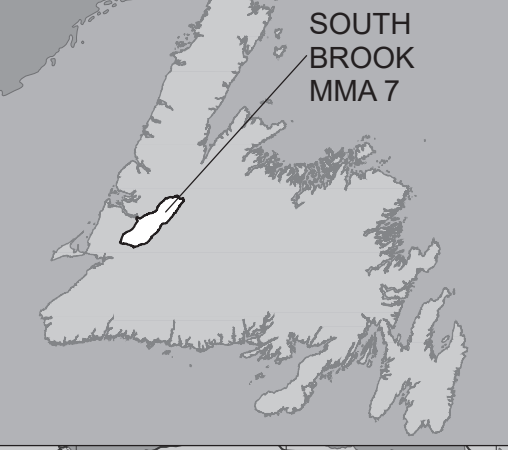
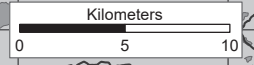


# South Brook Newfoundland Moose Management Area 7



**1:180,000**



NAD1983 Zone 21N

## MOOSE MANAGEMENT AREA 7 SOUTH BROOK

All that area of the Island of Newfoundland bounded by a line beginning at the Deer Lake Power Generating Station; then following the western most penstock in a southeasterly direction to the Humber Canal; then following the northern shoreline of the Humber Canal in a generally northeasterly direction to Glide Brook Steady; then following the northern shoreline of Glide Brook Steady in a generally easterly direction to Grand Lake; then following the northern shoreline of Grand Lake in a generally easterly direction to UTM coordinates 487298 metres east and 5446324 metres north; then following a straight line in a northeasterly direction to UTM coordinates 488517 metres east and 5446655 metres north; then following the western shoreline of this island in a generally southeasterly direction to a point at Howley Narrows at UTM coordinates 489593 metres east and 5444444 metres north; then following a straight line due south to UTM coordinates 489593 metres east and 5444293 metres north; then following the southeastern shoreline of Grand Lake in a southwesterly direction to the closest point opposite Camp 33 road, near the southwestern extremity of Grand Lake; then following a straight line in a westerly direction to Camp 33 Road; then following Camp 33 road in a northwesterly direction to its intersection with the Trans Canada Highway, TCH, Route 1; then following the TCH in a northeasterly direction to a point near Corner Brook at UTM coordinates 434793 metres east and 5422505 metres north; then following a straight line in a northeasterly direction to a point near Corner Brook at UTM coordinates 434793 metres east and 5422505 metres north; then following a straight line in a northeasterly direction to the southern abutment of Ballam Bridge on the southern bank of the Humber River; then following the southern bank of the Humber River and the southeastern shoreline of Deer Lake in a generally northeasterly direction to the point of commencement; including Glover Island.

Note: This map has been prepared as a convenient reference only. It is not a legal document. The Wildlife Act and Regulations and the Annual Hunting Orders published therein should be consulted for all purposes of interpreting and applying the law. Contact the Newfoundland & Labrador Wildlife Division.

Created by: Wildlife Division  
Department of Fisheries, Forestry & Agriculture  
Date: October 2020

Intersection of Camp 33 Road and the TCH

Southwestern extremity of Grand Lake, the closest point opposite Camp 33 road

TCH at UTM coordinates 434793 mE and 5422505 mN

Southern abutment of Ballam Bridge on the Humber River

Grand Lake at UTM coordinates 487298 mE and 5446324 mN

Grand Lake at UTM coordinates 488517 mE and 5446655 mN

Howley Narrows at UTM coordinates 489593 mE and 5444444 mN

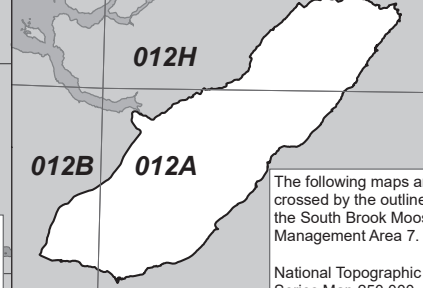
Point at UTM coordinates 489593 mE and 5444293 mN

WILDLIFE DIVISION HEADQUARTERS  
P.O. Box 2007, 192 Wheelers Road  
Corner Brook, NL A2H 7S1  
(709) 637-2025

Regional Wildlife Offices  
Goose Bay, 896-7930  
St. John's, 729-2630

Fish and Wildlife Enforcement  
Report Poaching Toll Free 1-877-820-0999  
Western Regional Office - 637-2971  
Labrador Regional Office - 896-7973  
Eastern Regional Office - 729-2192

## National Topographic Series Reference Index 1:250000



The following maps are crossed by the outline of the South Brook Moose Management Area 7.

National Topographic Series Map 250,000 Reference List:  
012-A, 012-B, 012-H

**PACK IT IN - PACK IT OUT**  
Garbage and litter on our landscape is becoming a serious problem. The best and only alternative for garbage is a Pack It In, Pack It Out policy. You carried in all those containers, boxes - packages when they were full; it's a lot easier to carry them out when they are empty. Please take your garbage home with you and dispose of it in the proper manner.

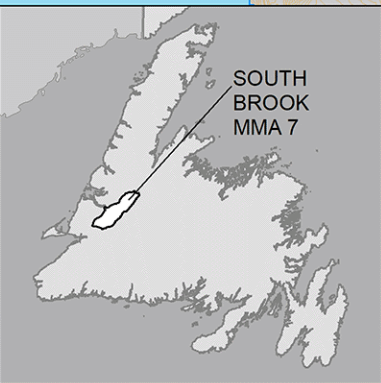
**REGIONAL FORESTRY OFFICES**  
Labrador, Goudie Building, P.O. Box 3014, Station B, Happy Valley, A0P 1E0, 896-2732  
Western, Forestry Building, Massey Dr., P.O. Box 2006, Corner Brook, A2H 6J8, 637-2370  
Eastern, Gander Public Building, Airport Blvd, P.O. Box 2222, Gander, A1V 2N9, 256-1450

B C D E F G H I J

1  
2  
3  
4  
5  
6  
7

# MMA 7: South Brook

## Moose Winter Distribution (Estimated): 2017 survey



### Legend

**Moose Density (estimated)**

Value

High  
Low

**Moose Density (measured)**

Density

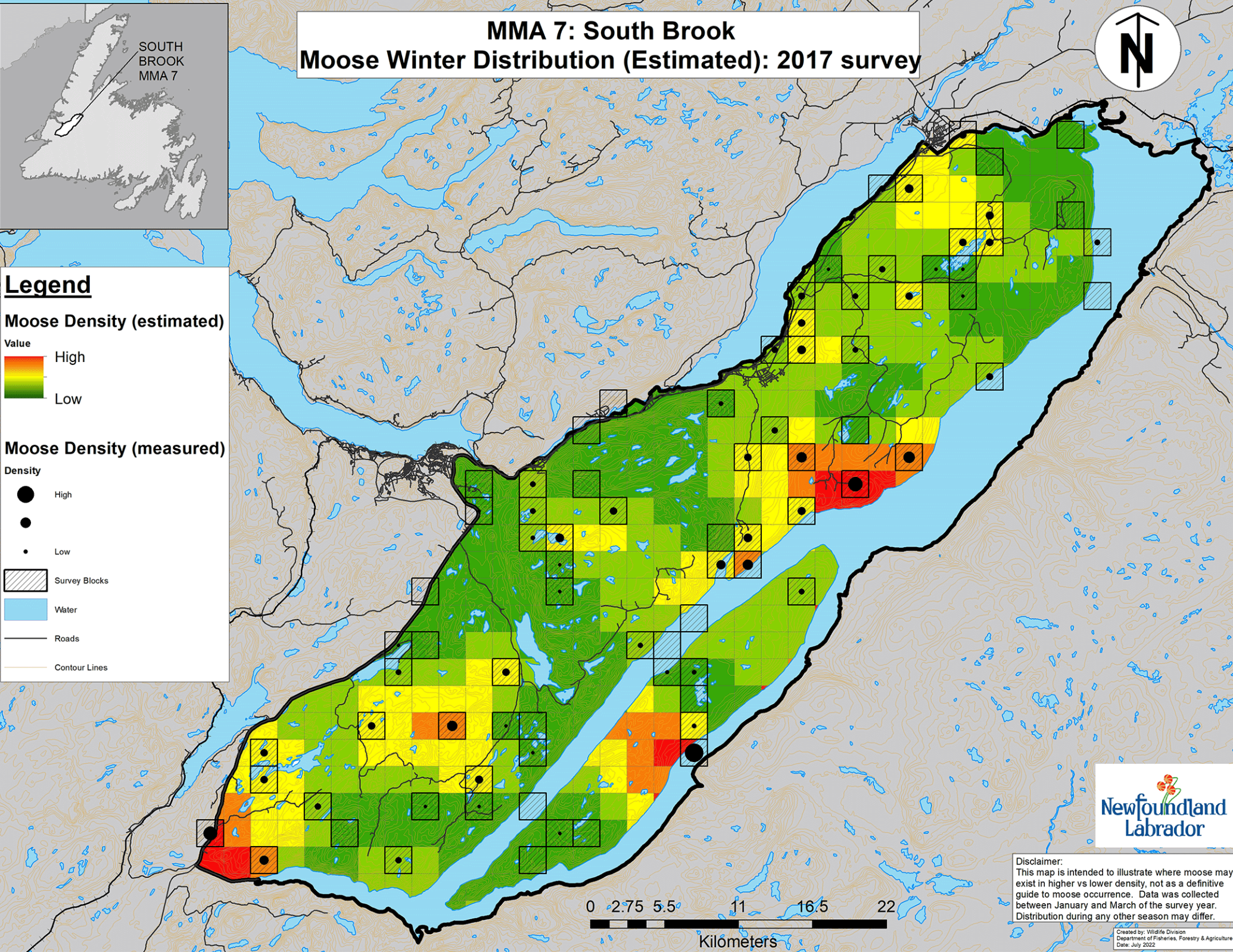
- High
- Low

▨ Survey Blocks

■ Water

— Roads

— Contour Lines



Disclaimer:  
This map is intended to illustrate where moose may exist in higher vs lower density, not as a definitive guide to moose occurrence. Data was collected between January and March of the survey year. Distribution during any other season may differ.

Created by: Wildlife Division  
Department of Fisheries, Forestry & Agriculture  
Date: July 2022