

St. Georges Newfoundland Moose Management Area 8

Southwestern extremity of Grand Lake



ST. GEORGES
MMA 8



Outlet of Leewaseecheech Brook at UTM coordinates 430243 mE and 5386794 mN

Intersection of Camp 33 Road and the TCH

GRAND LAKE

2

Western extremity of North Lake

North Lake

3

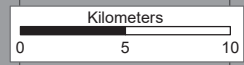
Southern abutment of a bridge crossing Southwest Brook at the Trans Canada Highway, TCH

St. George's River

Mouth of the St. George's River

ST. GEORGE'S BAY

1:180,000



NAD1983 Zone 21N

4

MOOSE MANAGEMENT AREA 8 ST. GEORGES

All that area of the Island of Newfoundland bounded by a line beginning at the northern bank of Crabbes River (directly due north of the northern extremity of Crabbes Head) at its outflow into the Gulf of St. Lawrence; then following the coastline of St. George's Bay in a generally northeasterly direction to the mouth of the St. George's River known as the Main Gut; then following the southern bank of St. George's River in a northeasterly direction to the southern abutment of a bridge crossing Southwest Brook at the Trans Canada Highway, TCH; then following said bridge and the TCH in a generally northerly then northeasterly direction to Camp 33 Road; then following Camp 33 Road in a generally southeasterly direction to the southwestern extremity of Grand Lake; then following the southern shoreline of Grand Lake in a generally southeasterly direction to the outlet of Leewaseecheech Brook at UTM coordinates 430243 metres east and 5386794 metres north; then following the eastern bank of Leewaseecheech Brook in a generally southerly then easterly direction to a bridge at its source on Little Grand Lake; then following a straight line in a generally southerly direction to the western extremity of North Lake; then following a straight line in a southwesterly direction to the western extremity of Dennis Pond; then following a straight line in a southwesterly direction to the northern extremity of John Marys Pond; then following a straight line in a southwesterly direction to the western extremity of Butt's Pond; then following a straight line in a southwesterly direction to the northwestern extremity of Hungry Grove Pond; then following the western shoreline of Hungry Grove Pond in a generally southerly direction to a small brook at its southern extremity; then following said brook in a generally southeasterly direction to its confluence with Crabbes River; then following the southern bank of Crabbes River in a generally northwesterly direction to the point of commencement; excluding all offshore islands.

Note: This map has been prepared as a convenient reference only. It is not a legal document. The Wildlife Act and Regulations and the Annual Hunting Orders published therein should be consulted for all purposes of interpreting and applying the law. Contact the Newfoundland & Labrador Wildlife Division.

Created by: Wildlife Division
Department of Fisheries, Forestry & Agriculture
Date: October 2020

GULF OF ST. LAWRENCE

Flat Bay

Flat Bay Brook

Fischells Brook

TRANS CANADA HIGHWAY

Dennis Pond

Western extremity of Dennis Pond

Northern extremity of John Marys Pond

John Marys Pond

Western extremity of Butt's Pond

Butt's Pond

Northwestern extremity of Hungry Grove Pond

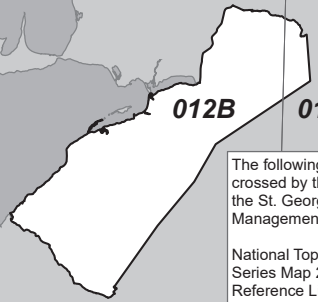
Hungry Grove Pond

WILDLIFE DIVISION HEADQUARTERS
P.O. Box 2007, 192 Wheelers Road
Corner Brook, NL A2H 7S1
(709) 637-2025

Regional Wildlife Offices
Goose Bay, 896-7930
St. John's, 729-2630

Fish and Wildlife Enforcement
Report Poaching Toll Free 1-877-820-0999
Western Regional Office - 637-2971
Labrador Regional Office - 896-7973
Eastern Regional Office - 729-2192

National Topographic Series Reference Index 1:250000



The following maps are crossed by the outline of the St. Georges Moose Management Area 8.

National Topographic Series Map 250,000 Reference List:

012-A, 012-B

PACK IT IN - PACK IT OUT
Garbage and litter on our landscape is becoming a serious problem. The best and only alternative for garbage is a Pack It In, Pack It Out policy. You carried in all those containers, boxes - packages when they were full; it's a lot easier to carry them out when they are empty. Please take your garbage home with you and dispose of it in the proper manner.

REGIONAL FORESTRY OFFICES
Labrador, Goudie Building, P.O. Box 3014, Station B, Happy Valley, A0P 1E0, 896-2732
Western, Forestry Building, Massey Dr., P.O. Box 2006, Corner Brook, A2H 6J8, 637-2370
Eastern, Gander Public Building, Airport Blvd., P.O. Box 2222, Gander, A1V 2N9, 256-1450

C

D

E

F

G

H

I

J

7

8

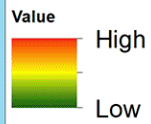
MMA 8: St. Georges

Moose Winter Distribution (Estimated): 2020 survey

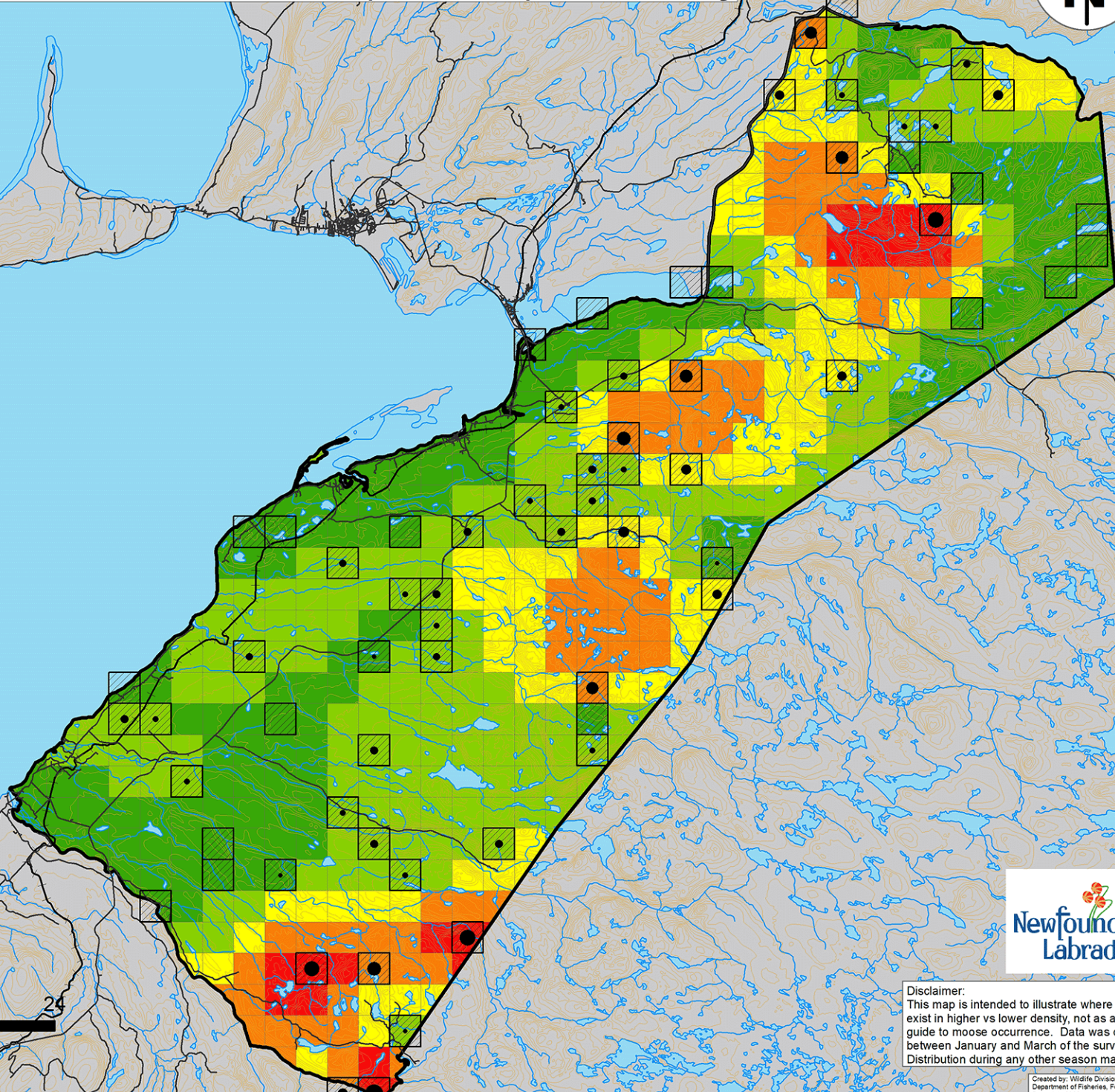
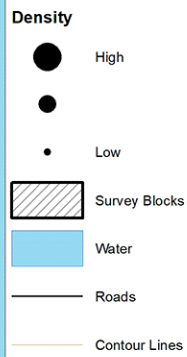


Legend

Moose Density (estimated)



Moose Density (measured)



Disclaimer:
This map is intended to illustrate where moose may exist in higher vs lower density, not as a definitive guide to moose occurrence. Data was collected between January and March of the survey year. Distribution during any other season may differ.