

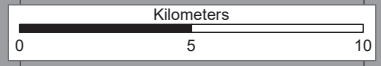
# Anguille Mountains Newfoundland Moose Management Area 9



ANGUILLE MOUNTAINS MMA 9



1:110,000



NAD1983 Zone 21N

## MOOSE MANAGEMENT AREA 9 ANGUILLE MOUNTAINS

All that area of the Island of Newfoundland bounded by a line beginning at Crabbes Head on the southern bank adjacent to the outflow of Crabbes River into the Gulf of St. Lawrence; then following the southern bank of Crabbes River in a generally southeasterly direction to its intersection with the southern abutment of a bridge connected to the Trans Canada Highway, TCH, Route 1; then following the TCH in a generally southwesterly direction to the northern abutment of a bridge crossing South Branch River; then following the northern bank of the South Branch River in a generally southwesterly direction to its confluence with the North Branch River; then following the north bank of the Grand Codroy River in a generally southwesterly direction to its outflow into the Gulf of St. Lawrence; then following the coastline in a generally northwesterly direction to Cape Anguille; then following the coastline in a generally northeasterly direction to the point of commencement; excluding all offshore islands.

Note: This map has been prepared as a convenient reference only. It is not a legal document. The Wildlife Act and Regulations and the Annual Hunting Orders published therein should be consulted for all purposes of interpreting and applying the law. Contact the Newfoundland & Labrador Wildlife Division.

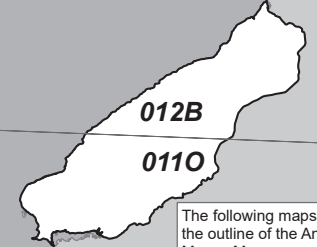
Created by: Wildlife Division  
Department of Fisheries, Forestry & Agriculture  
Date: October 2020

WILDLIFE DIVISION HEADQUARTERS  
P.O. Box 2007, 192 Wheelers Road  
Corner Brook, NL A2H 7S1  
(709) 637-2025

Regional Wildlife Offices  
Goose Bay, 896-7930  
St. John's, 729-2630

Fish and Wildlife Enforcement  
Report Poaching Toll Free 1-877-820-0999  
Western Regional Office - 637-2971  
Labrador Regional Office - 896-7973  
Eastern Regional Office - 729-2192

## National Topographic Series Reference Index 1:250000



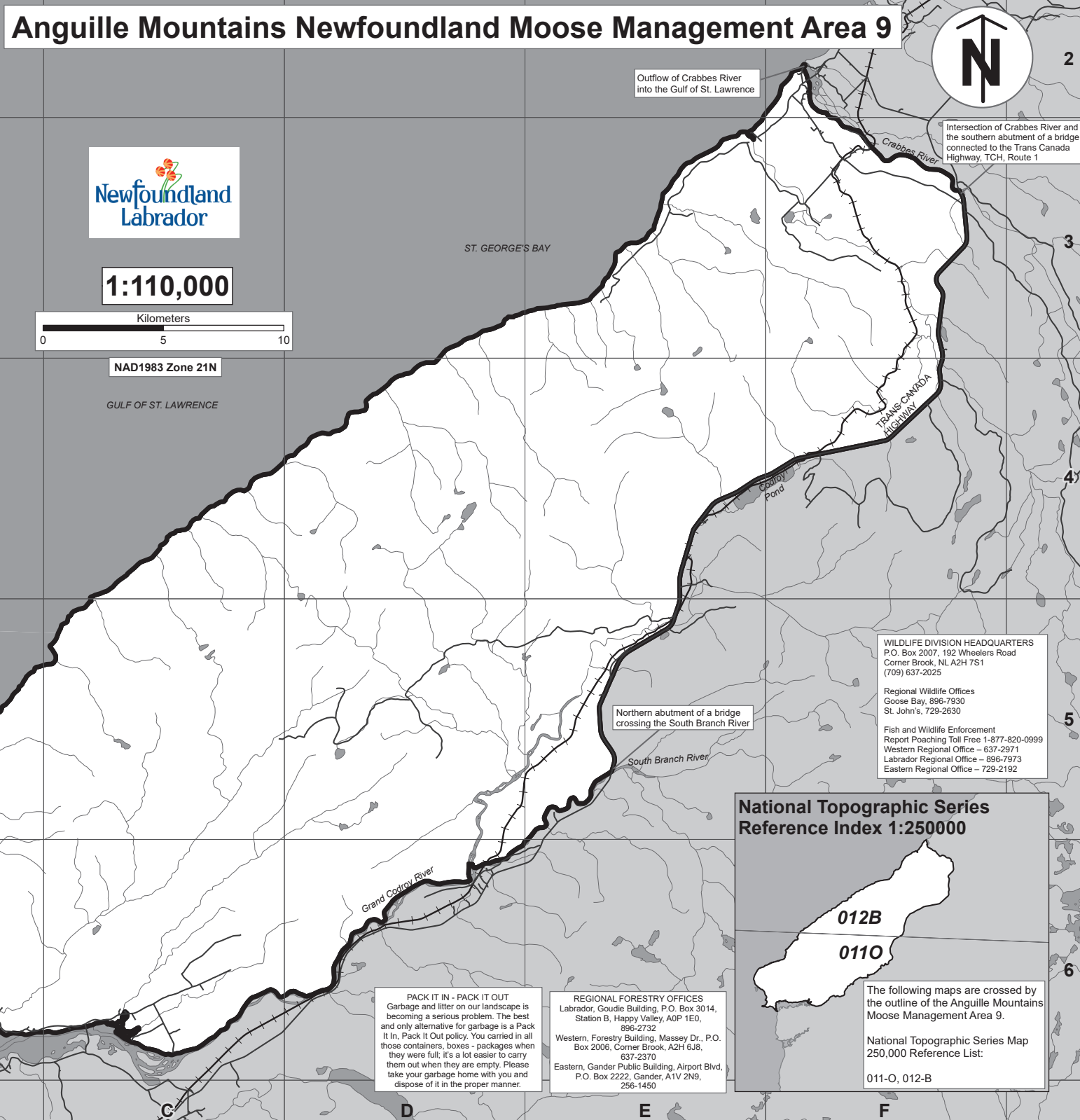
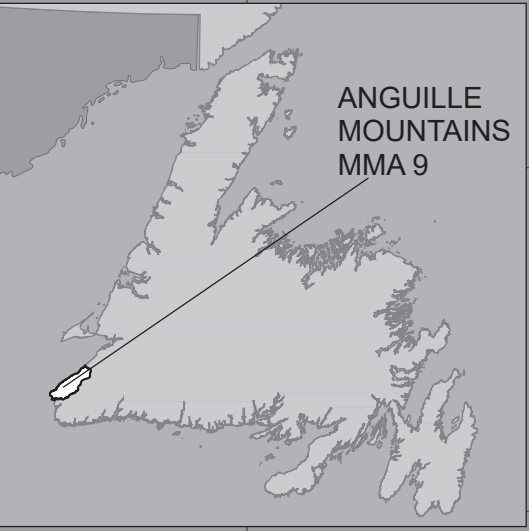
The following maps are crossed by the outline of the Anguille Mountains Moose Management Area 9.

National Topographic Series Map  
250,000 Reference List:  
011-O, 012-B

**PACK IT IN - PACK IT OUT**  
Garbage and litter on our landscape is becoming a serious problem. The best and only alternative for garbage is a Pack It In, Pack It Out policy. You carried in all those containers, boxes - packages when they were full; it's a lot easier to carry them out when they are empty. Please take your garbage home with you and dispose of it in the proper manner.

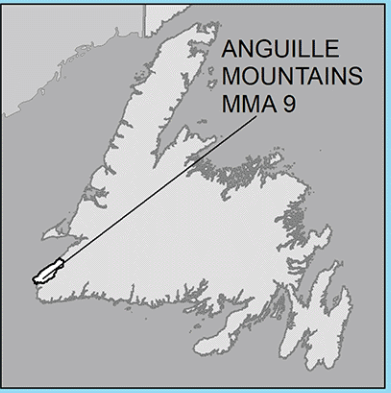
**REGIONAL FORESTRY OFFICES**  
Labrador, Goudie Building, P.O. Box 3014,  
Station B, Happy Valley, A0P 1E0,  
896-2732  
Western, Forestry Building, Massey Dr., P.O.  
Box 2006, Corner Brook, A2H 6J8,  
637-2370  
Eastern, Gander Public Building, Airport Blvd.,  
P.O. Box 2222, Gander, A1V 2N9,  
256-1450

A B C D E F



# MMA 9: Anguille Mountains

## Moose Winter Distribution (Estimated):2020 survey



### Legend

**Moose Density (estimated)**

Value

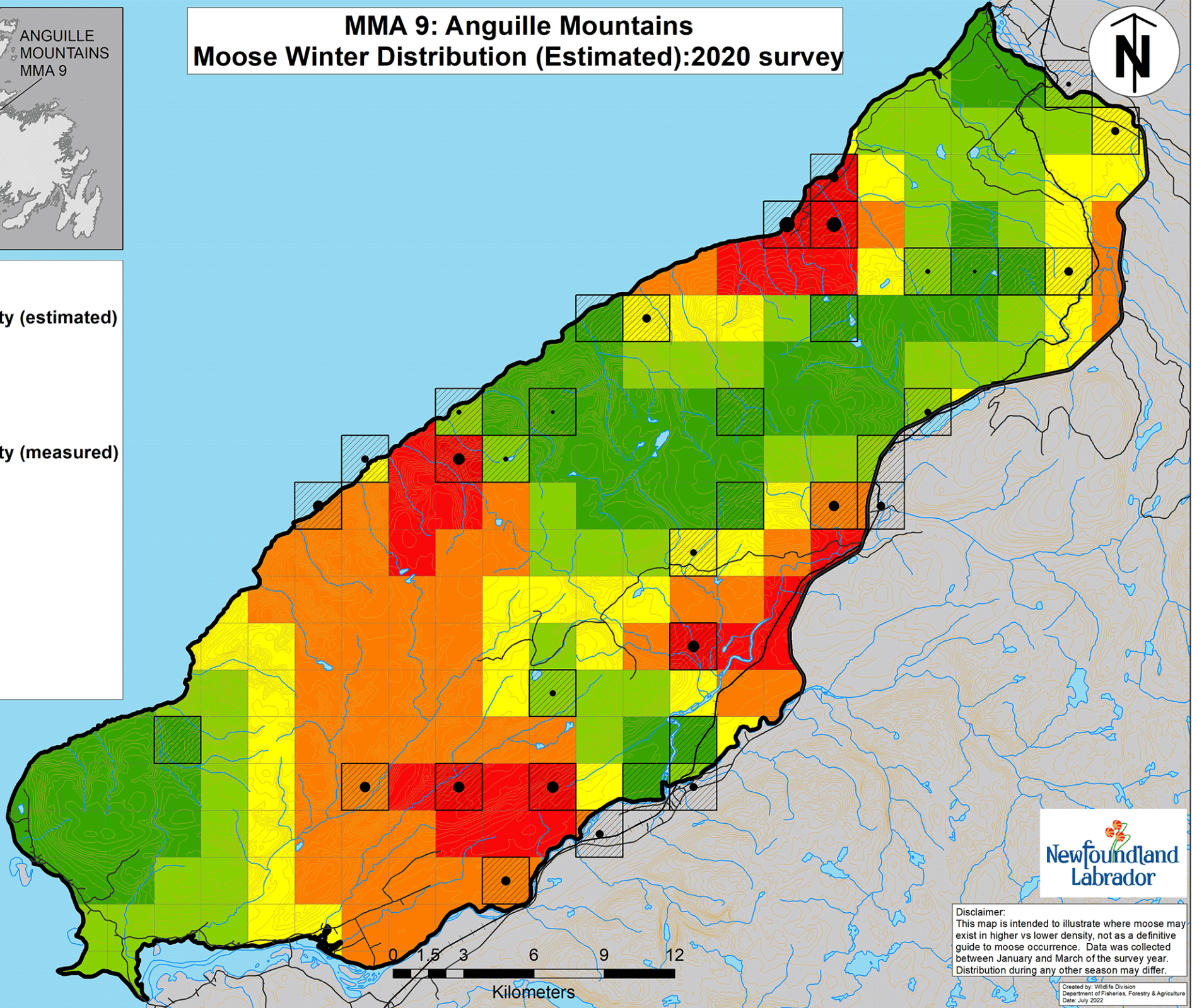
- █ High
- █ Low

**Moose Density (measured)**

Density

- High
- Low

- Survey Blocks
- Water
- Roads
- Contour Lines



**Disclaimer:**  
 This map is intended to illustrate where moose may exist in higher vs lower density, not as a definitive guide to moose occurrence. Data was collected between January and March of the survey year. Distribution during any other season may differ.

Created by: Wildlife Division  
 Department of Fisheries, Forestry & Agriculture  
 Date: July 2022