

# Dashwoods Newfoundland Moose Management Area 11



DASHWOODS  
MMA 11

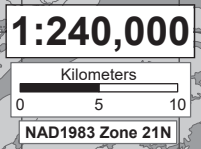
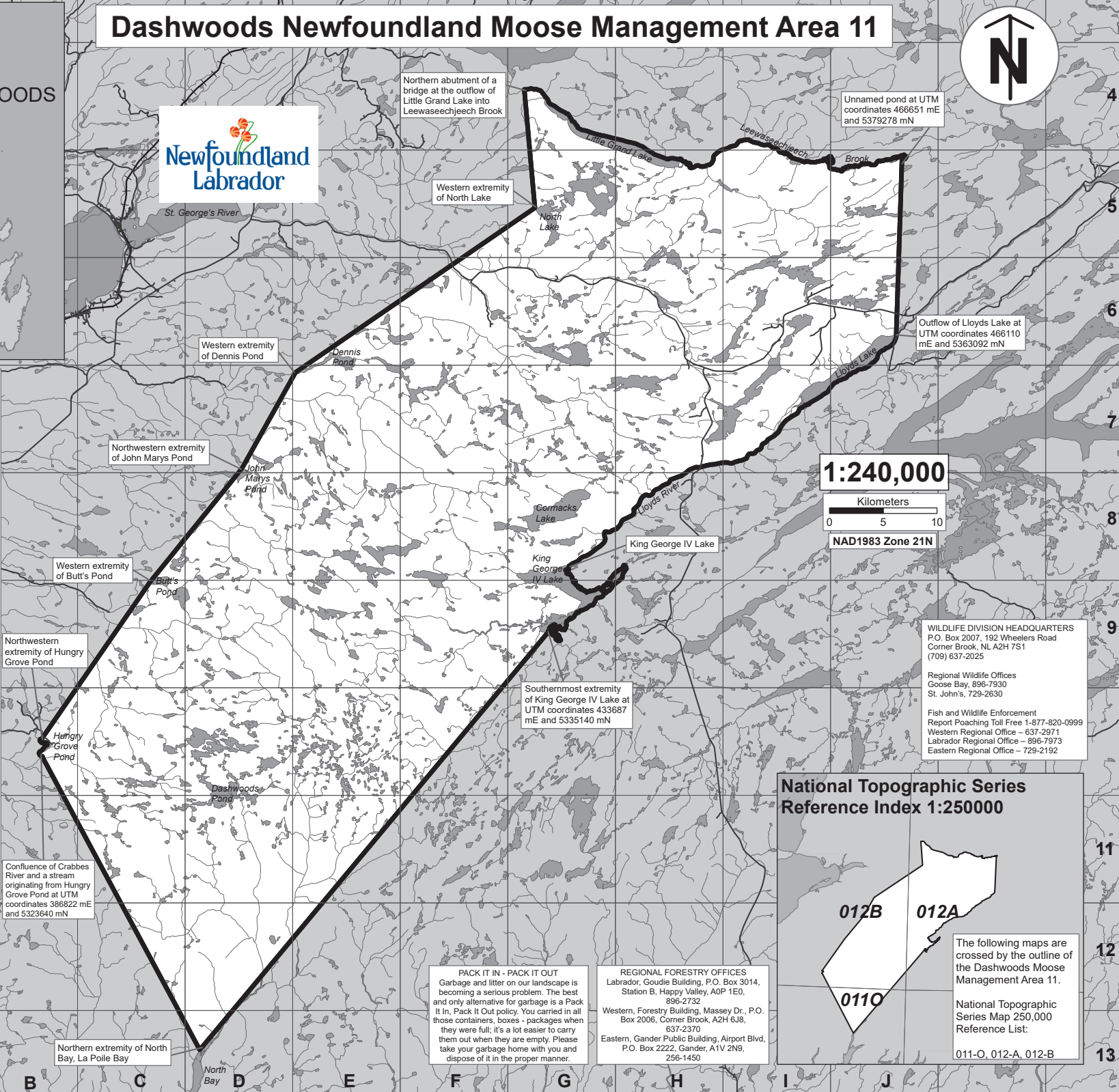


**MOOSE MANAGEMENT AREA 11  
DASHWOODS**

All that area of the Island of Newfoundland bounded by a line beginning at the northern extremity of North Bay, La Poile Bay; then following a straight line in a northwesterly direction to the confluence of Crabbes River with a stream originating from Hungry Grove Pond at UTM coordinates 386822 metres east and 5323640 metres north; then following the western bank of said stream and the western shoreline of Hungry Grove Pond in a generally northerly direction to its northwestern extremity; then following a straight line in a northeasterly direction to the western extremity of Butt's Pond; then following a straight line in a northeasterly direction to the northwestern extremity of John Marys Pond; then following a straight line in a northeasterly direction to the western extremity of Dennis Pond; then following a straight line in a generally northerly direction to the northern abutment of a bridge at the outflow of Little Grand Lake into Leewasechjeech Brook; then following the northern shoreline of Little Grand Lake and the northern banks of the eastern tributaries of Leewasechjeech Brook in a generally southeasterly direction to an unnamed pond at UTM coordinates 464325 metres east and 5379136 metres north; then following the northeastern shoreline of said pond in a generally easterly direction to a brook on its southeastern shoreline at UTM coordinates 466651 metres east and 5379278 metres north; then following a straight line in a generally southerly direction to the southern shoreline of Lloyds Lake to its outflow at UTM coordinates 466110 metres east and 5363092 metres north; then following the southern shoreline of Lloyds Lake and the southern bank of Lloyds River in a generally southwestly direction to King George IV Lake; then following the eastern shoreline of King George IV Lake to its southernmost extremity at UTM coordinates 433687 metres east and 5335140 metres north; then following a straight line in a southwestly direction to the point of commencement.

Note: This map has been prepared as a convenient reference only. It is not a legal document. The Wildlife Act and Regulations and the Annual Hunting Orders published therein should be consulted for all purposes of interpreting and applying the law. Contact the Newfoundland & Labrador Wildlife Division.

Created by: Wildlife Division  
Department of Fisheries, Forestry & Agriculture  
Date: October 2020

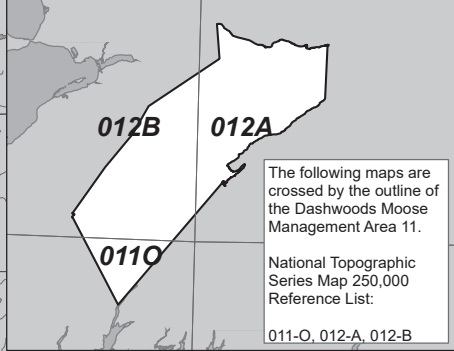


**WILDLIFE DIVISION HEADQUARTERS**  
P.O. Box 2007, 192 Wheelers Road  
Corner Brook, NL A2H 7S1  
(709) 637-2025

Regional Wildlife Offices  
Goose Bay, 896-7930  
St. John's, 729-2630

Fish and Wildlife Enforcement  
Report Poaching Toll Free 1-877-820-0999  
Western Regional Office - 637-2371  
Labrador Regional Office - 896-7973  
Eastern Regional Office - 729-2192

**National Topographic Series  
Reference Index 1:250000**



The following maps are crossed by the outline of the Dashwoods Moose Management Area 11.

National Topographic Series Map 250,000 Reference List:  
011-O, 012-A, 012-B

**PACK IT IN - PACK IT OUT**  
Garbage and litter on our landscape is becoming a serious problem. The best and only alternative for garbage is a Pack It In, Pack It Out policy. You carried in all those containers, boxes - packages when they were full; it's a lot easier to carry them out when they are empty. Please take your garbage home with you and dispose of it in the proper manner.

**REGIONAL FORESTRY OFFICES**  
Labrador, Goudie Building, P.O. Box 3014,  
Station B, Happy Valley, A0P 1E0,  
896-2732  
Western, Forestry Building, Massey Dr., P.O.  
Box 2006, Corner Brook, A2H 6J8,  
637-2370  
Eastern, Gander Public Building, Airport Blvd,  
P.O. Box 2222, Gander, A1V 2N9,  
256-1450

B C D E F G H I J

Northern extremity of North Bay, La Poile Bay

Southernmost extremity of King George IV Lake at UTM coordinates 433687 mE and 5335140 mN

Confluence of Crabbes River and a stream originating from Hungry Grove Pond at UTM coordinates 386822 mE and 5323640 mN

Western extremity of Butt's Pond

Northwestern extremity of John Marys Pond

Western extremity of Dennis Pond

Western extremity of North Lake

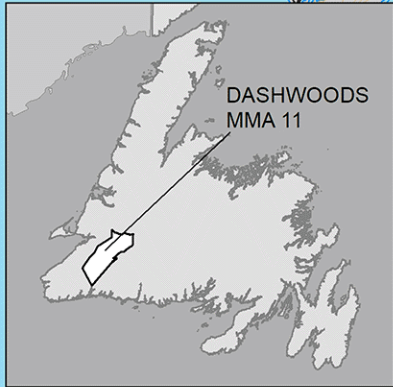
Northern abutment of a bridge at the outflow of Little Grand Lake into Leewasechjeech Brook

Unnamed pond at UTM coordinates 466651 mE and 5379278 mN

Outflow of Lloyds Lake at UTM coordinates 466110 mE and 5363092 mN

# MMA 11: Dashwoods

## Moose Winter Distribution (Estimated): 2022 survey



DASHWOODS  
MMA 11



**Disclaimer:**  
This map is intended to illustrate where moose may exist in higher vs lower density, not as a definitive guide to moose occurrence. Data was collected between January and March of the survey year. Distribution during any other season may differ.

Created by: Wildlife Division  
Department of Fisheries, Forestry & Agriculture  
Date: July 2022



### Legend

**Moose Density (estimated)**

Value

High  
Low

**Moose Density (measured)**

Density

High  
Low

Survey Blocks  
Water  
Roads  
Contour Lines