

# Buchans Newfoundland Moose Management Area 12



BUCHANS  
MMA 12

## MOOSE MANAGEMENT AREA 12 BUCHANS

All that area of the Island of Newfoundland bounded by a line beginning at the outflow of Leewaseechjeech Brook into Grand Lake at UTM coordinates 430243 metres east and 5386794 metres north; then following the southeastern shoreline of Grand Lake in a generally northeasterly direction to Hinds Brook; then following the eastern bank of Hinds Brook in a southeasterly direction to Hinds Lake; then following the northeastern shoreline of Hinds Lake in a southeasterly direction to the mouth of a brook at the southeastern extremity of said lake at UTM coordinates 505841 metres east and 5416632 metres north; then following a straight line in a southeasterly direction to the northwestern extremity of Buchans Lake; then following the western shoreline of Buchans Lake in a generally southeasterly direction to Buchans Brook; then following the southwestern bank of Buchans Brook in a southeasterly direction to its outflow into Red Indian Lake; then following the northern shoreline of Red Indian Lake in a generally northeasterly direction to the northern bank of Mary March's Brook at the Buchan's Junction Bridge; then following the southern bank of said brook and the northeastern shoreline of Red Indian Lake in a southwesterly direction to the Exploits Dam on said lake; then following the southern shoreline of Red Indian Lake in a generally southwesterly direction to its confluence with Lloyds River; then following the southeastern bank of Lloyds River in a generally southwesterly direction to its confluence with Lloyds Lake at UTM coordinates 466110 metres east and 5363092 metres north; then following a straight line in a northerly direction to the mouth of a brook on an unnamed pond at UTM coordinates 466651 metres east and 5379278 metres north; then following the southeastern and then northern shoreline of this unnamed pond in a generally westerly direction to its outflow at UTM coordinates 464325 metres east and 5379136 metres north into the eastern tributary of Leewaseechjeech Brook; then following the northern bank of the eastern tributary of Leewaseechjeech Brook in a generally westerly direction to its confluence with the main branch of Leewaseechjeech Brook; then following main branch Leewaseechjeech Brook in a generally westerly direction to its outflow into Little Grand Lake; then following the northern shoreline of Little Grand Lake in a northwesterly direction to a northern abutment of a bridge at said lake's northwestern extremity; then following the eastern bank of Leewaseechjeech Brook in a generally westerly then northerly direction to the point of commencement.

Note: This map has been prepared as a convenient reference only. It is not a legal document. The Wildlife Act and Regulations and the Annual Hunting Orders published therein should be consulted for all purposes of interpreting and applying the law. Contact the Newfoundland & Labrador Wildlife Division.

Created by: Wildlife Division  
Department of Fisheries, Forestry & Agriculture  
Date: October 2020

Outflow of Leewaseechjeech Brook into Grand Lake at UTM coordinates 430243 mE and 5386794 mN

Northern abutment of a bridge at the northwestern extremity of Little Grand Lake

Outflow of Leewaseechjeech Brook into Little Grand Lake

Mouth of a brook on an unnamed pond at UTM coordinates 466651 mE and 5379278 mN

Confluence of Lloyds River and Lloyds Lake at UTM coordinates 466110 mE and 5363092 mN

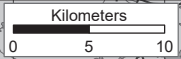
Mouth of a brook at the southeastern extremity of Hinds Lake at UTM coordinates 505841 mE and 5416632 mN

Northwestern extremity of Buchans Lake

Outflow of Buchans Brook into Red Indian Lake

Confluence of Red Indian Lake and Lloyds River

**1:250,000**



NAD1983 Zone 21N

**PACK IT IN - PACK IT OUT**  
Garbage and litter on our landscape is becoming a serious problem. The best and only alternative for garbage is a Pack It In, Pack It Out policy. You carried in all those containers, boxes - packages when they were full; it's a lot easier to carry them out when they are empty. Please take your garbage home with you and dispose of it in the proper manner.

**REGIONAL FORESTRY OFFICES**  
Labrador, Goudie Building, P.O. Box 3014, Station B, Happy Valley, AOP 1E0, 896-2732  
Western, Forestry Building, Massey Dr., P.O. Box 2006, Corner Brook, A2H 6J8, 637-2370  
Eastern, Gander Public Building, Airport Blvd, P.O. Box 2222, Gander, A1V 2N9, 256-1450

**WILDLIFE DIVISION HEADQUARTERS**  
P.O. Box 2007, 192 Wheelers Road  
Corner Brook, NL A2H 7S1  
(709) 637-2025

Regional Wildlife Offices  
Goose Bay, 896-7930  
St. John's, 729-2630

Fish and Wildlife Enforcement  
Report Poaching Toll Free 1-877-820-0999  
Western Regional Office - 637-2971  
Labrador Regional Office - 896-7973  
Eastern Regional Office - 729-2192

**National Topographic Series  
Reference Index 1:250000  
012H**



The following maps are crossed by the outline of the Buchans Moose Management Area 12.

National Topographic Series Map 250,000 Reference List:  
012-A, 012-H

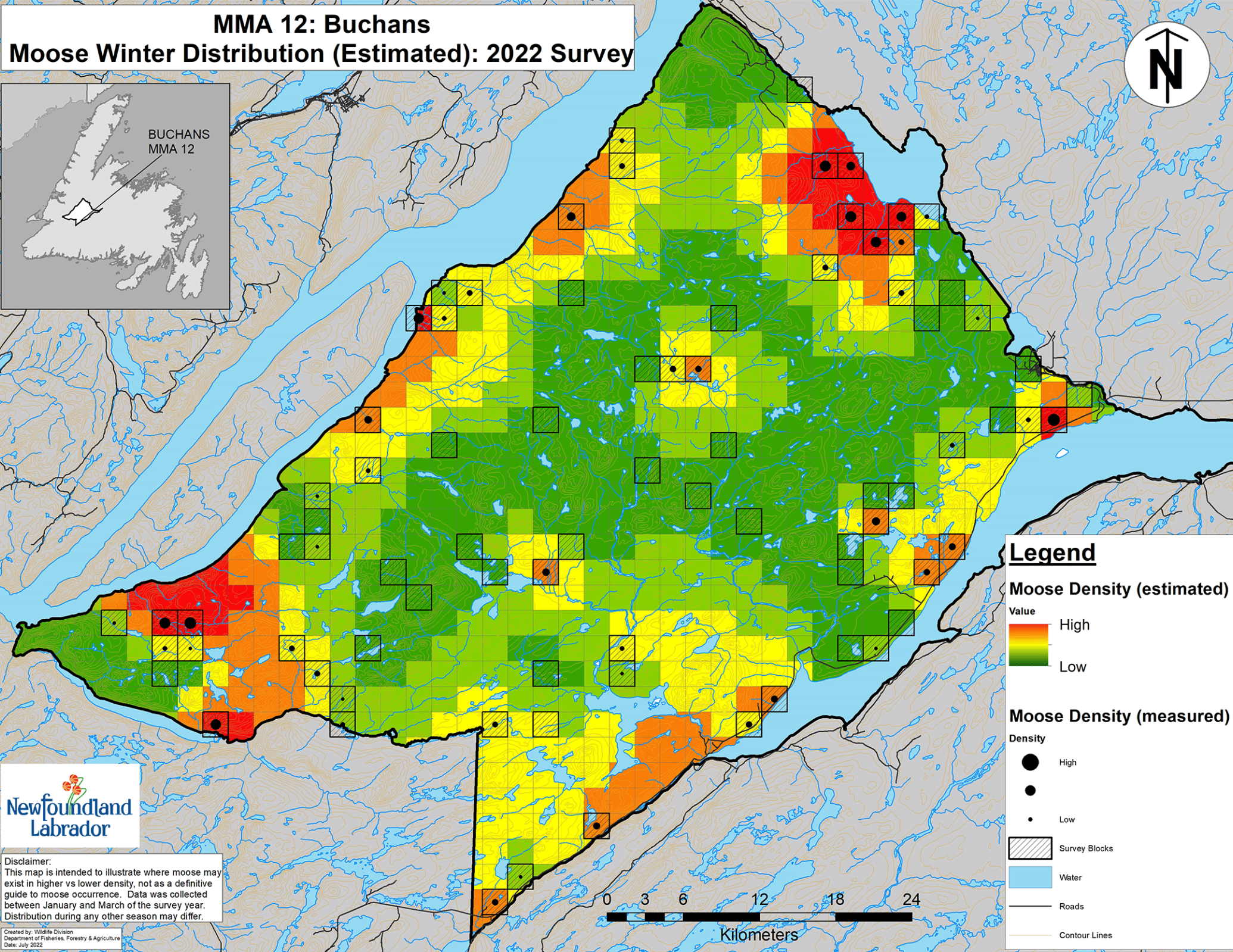
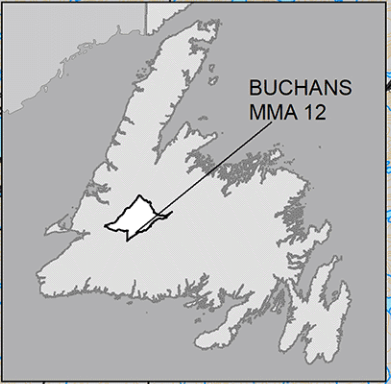
B C D E F G H I J K

1  
2  
3  
4  
5  
6  
7  
8



# MMA 12: Buchans

## Moose Winter Distribution (Estimated): 2022 Survey



### Legend

**Moose Density (estimated)**  
Value  
High  
Low

**Moose Density (measured)**  
Density  
High  
Low

Survey Blocks  
Water  
Roads  
Contour Lines



**Disclaimer:**  
This map is intended to illustrate where moose may exist in higher vs lower density, not as a definitive guide to moose occurrence. Data was collected between January and March of the survey year. Distribution during any other season may differ.

Created by: Wildlife Division  
Department of Fisheries, Forestry & Agriculture  
Date: July 2022

