

# Sandy Badger Newfoundland Moose Management Area 16



SANDY  
BADGER  
MMA 16



## MOOSE MANAGEMENT AREA 16 SANDY BADGER

All that area of the Island of Newfoundland bounded by a line beginning at the confluence of the western bank of Noel Paul's Brook with the Exploits River; then following the southern bank of the Exploits River in a northeasterly, then easterly direction to its confluence with Great Rattling Brook; then following the western bank of Great Rattling Brook in a southeasterly direction to UTM coordinates 608314 metres east and 5420444 metres north; then following a straight line in a southwesterly direction to the eastern extremity of Island Pond; then following a straight line in a southwesterly direction to the eastern extremity of Pistol Lake; then following a straight line in a southeasterly direction to the northwestern extremity of an unnamed pond on the headwaters of South Great Rattling Brook at UTM coordinates 585800 metres east and 5370902 metres north; then following a straight line in a westerly direction to the northern extremity of Gulp Pond; then following a straight line in a generally westerly direction to the northern extremity of Island Pond at UTM coordinates 547981 metres east and 5367922 metres north; then following a straight line in a northeasterly direction to the outlet of Noel Paul's Steady at UTM coordinates 556596 metres east and 5390449 metres north; then following the western bank of said brook in a northwesterly direction to the point of commencement.

Note: This map has been prepared as a convenient reference only. It is not a legal document. The Wildlife Act and Regulations and the Annual Hunting Orders published therein should be consulted for all purposes of interpreting and applying the law. Contact the Newfoundland & Labrador Wildlife Division.

Created by: Wildlife Division  
Department of Fisheries, Forestry & Agriculture  
Date: October 2020

WILDLIFE DIVISION HEADQUARTERS  
P.O. Box 2007, 192 Wheelers Road  
Corner Brook, NL A2H 7S1  
(709) 637-2025

Regional Wildlife Offices  
Goose Bay, 896-7930  
St. John's, 729-2630

Fish and Wildlife Enforcement  
Report Poaching Toll Free 1-800-820-0999  
Western Regional Office – 637-2971  
Labrador Regional Office – 896-7958  
Eastern Regional Office – 729-2192

**PACK IT IN - PACK IT OUT**  
Garbage and litter on our landscape is becoming a serious problem. The best and only alternative for garbage is a Pack It In, Pack It Out policy. You carried in all those containers, boxes - packages when they were full; it's a lot easier to carry them out when they are empty. Please take your garbage home with you and dispose of it in the proper manner.

Northern extremity of Island Pond at UTM coordinates 547981 mE and 5367922 mN

Outlet of Noel Paul's Steady at UTM coordinates 556596 mE and 5390449 mN

Eastern extremity of Pistol Lake

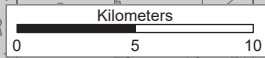
Northern extremity of Gulp Pond

Northwestern extremity of an unnamed pond on the headwaters of South Great Rattling Brook at UTM coordinates 585800 mE and 5370902 mN

Confluence of the Exploits River and Great Rattling Brook

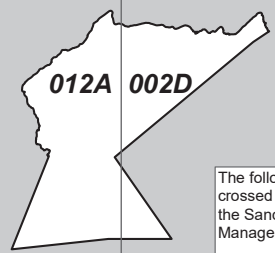
Great Rattling Brook at UTM coordinates 608314 mE and 5420444 mN

**1:160,000**



NAD1983 Zone 21N

## National Topographic Series Reference Index 1:250000



The following maps are crossed by the outline of the Sandy Badger Moose Management Area 16.

National Topographic Series Map 250,000  
Reference List:  
002-D, 012-A

B C D E F G H

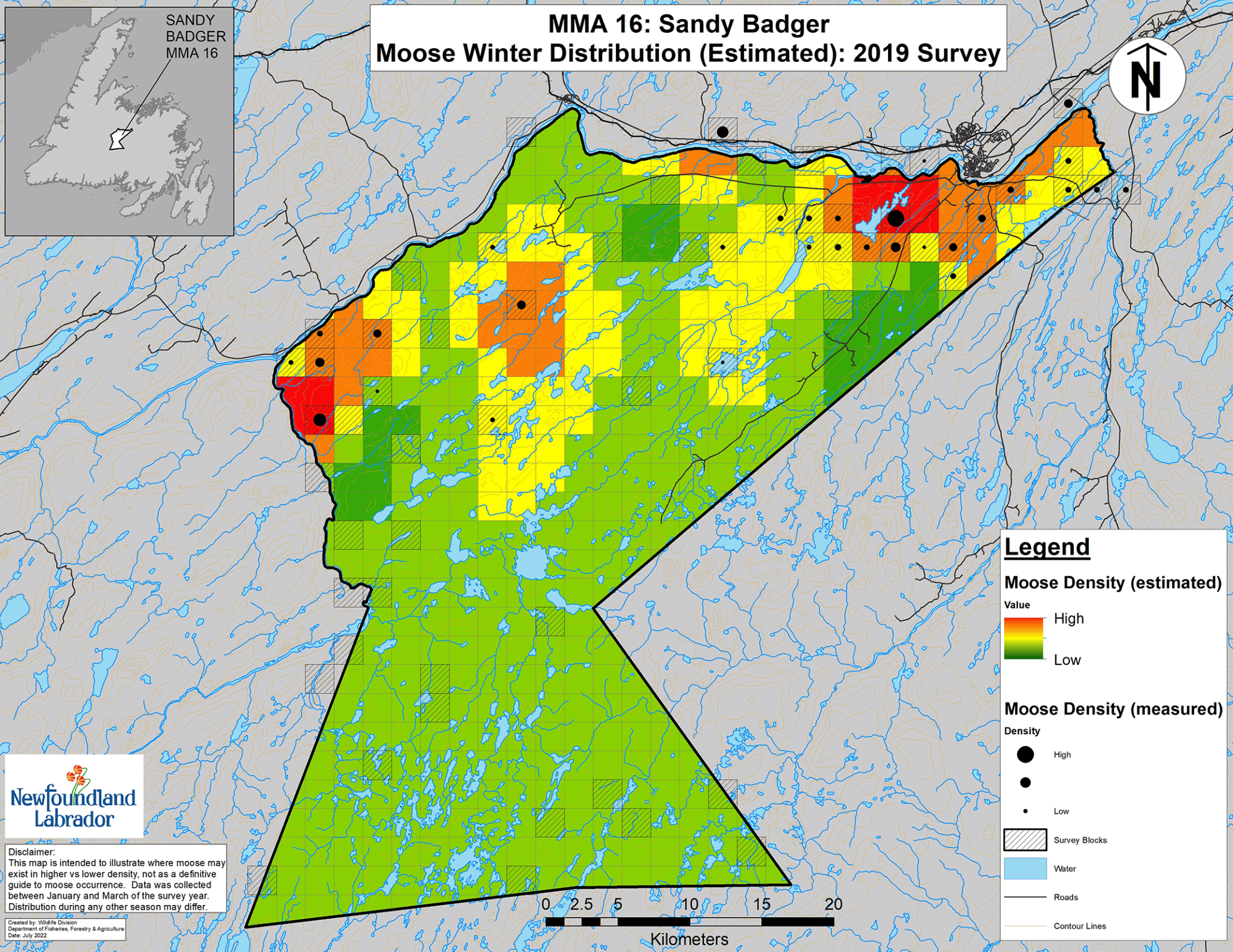
3  
4  
5  
6  
7  
8  
9



# MMA 16: Sandy Badger

## Moose Winter Distribution (Estimated): 2019 Survey

SANDY  
BADGER  
MMA 16



**Legend**

**Moose Density (estimated)**

Value

High

Low

**Moose Density (measured)**

Density

High

Low

Survey Blocks

Water

Roads

Contour Lines



**Disclaimer:**  
This map is intended to illustrate where moose may exist in higher vs lower density, not as a definitive guide to moose occurrence. Data was collected between January and March of the survey year. Distribution during any other season may differ.

Created by: Wildlife Division  
Department of Fisheries, Forestry & Agriculture  
Date: July 2022

