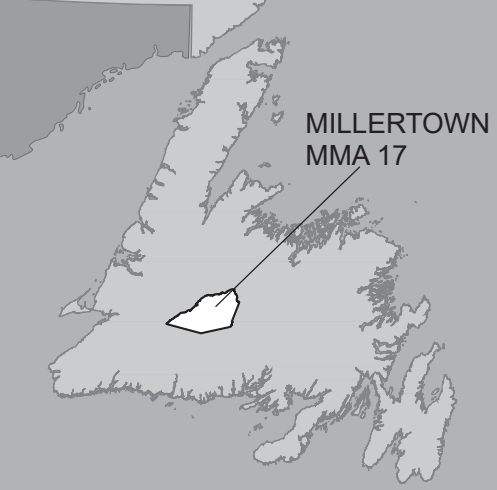


Millertown Newfoundland Moose Management Area 17



MOOSE MANAGEMENT AREA 17 MILLERTOWN

All that area of the Island of Newfoundland bounded by a line beginning at the northeastern extremity of Lloyds Lake at UTM coordinates 466110 metres east and 5363092 metres north; then following the southeastern bank of Lloyds River in a northeasterly direction to its confluence with Red Indian Lake; then following the southeastern shoreline of Red Indian Lake in a northeasterly direction to the Exploits Dam; then following the southern bank of the Exploits River in a northeasterly direction to its confluence with Noel Paul's Brook; then following the western bank of said brook in a southeasterly direction to Noel Paul's Steady at UTM coordinates 556596 metres east and 5390449 metres north; then following a straight line in a southwesterly direction to the northern extremity of Island Pond at UTM coordinates 547981 metres east and 5367922 metres north; then following the eastern shoreline of Island Pond in a generally southwesterly direction to a brook at its southern extremity at UTM coordinates 545742 metres east and 5351847 metres north; then following a straight line in a generally southwesterly direction to the southern extremity of Blizzard Pond at UTM coordinates 509389 metres east and 5351847 metres north; then following a straight line in a northwesterly direction to the point of commencement.

Note: This map has been prepared as a convenient reference only. It is not a legal document. The Wildlife Act and Regulations and the Annual Hunting Orders published therein should be consulted for all purposes of interpreting and applying the law. Contact the Newfoundland & Labrador Wildlife Division.

Created by: Wildlife Division
Department of Fisheries, Forestry & Agriculture
Date: October 2020

WILDLIFE DIVISION HEADQUARTERS
P.O. Box 2007, 192 Wheelers Road
Corner Brook, NL A2H 7S1
(709) 637-2025

Regional Wildlife Offices
Goose Bay, 896-7930
St. John's, 729-2630

Fish and Wildlife Enforcement
Report Poaching Toll Free 1-877-820-0999
Western Regional Office - 637-2971
Labrador Regional Office - 896-7973
Eastern Regional Office - 729-2192

Confluence of Lloyds River and Red Indian Lake

Northeastern extremity of Lloyds Lake at UTM coordinates 466110 mE and 5363092 mN

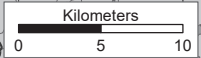
Southern extremity of Blizzard Pond at UTM coordinates 509389 mE and 5351847 mN

Northern extremity of Island Pond at UTM coordinates 547981 mE and 5367922 mN

Brook at the southern extremity of Island Pond at UTM coordinates 545742 mE and 5360251 mN

Noel Paul's Steady at UTM coordinates 556596 mE and 5390449 mN

1:230,000



NAD1983 Zone 21N

PACK IT IN - PACK IT OUT
Garbage and litter on our landscape is becoming a serious problem. The best and only alternative for garbage is a Pack It In, Pack It Out policy. You carried in all those containers, boxes, packages when they were full, it's a lot easier to carry them out when they are empty. Please take your garbage home with you and dispose of it in the proper manner.

REGIONAL FORESTRY OFFICES
Labrador, Goudie Building, P.O. Box 3014, Station B, Happy Valley, A0P 1E0, 896-2732
Western, Forestry Building, Massey Dr., P.O. Box 2006, Corner Brook, A2H 6J8, 637-2370
Eastern, Gander Public Building, Airport Blvd, P.O. Box 2222, Gander, A1V 2N9, 256-1450

National Topographic Series Reference Index 1:250000



The following map is crossed by the outline of the Millertown Moose Management Area 17.

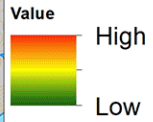
National Topographic Series Map 250,000 Reference List:

012-A

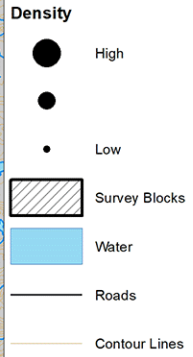
B C D E F G H I J K

Legend

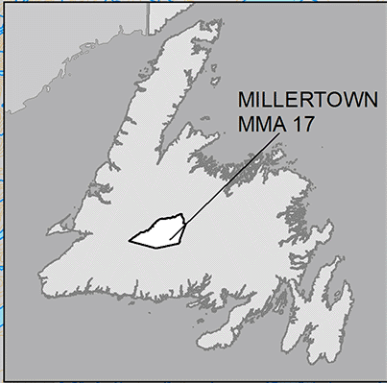
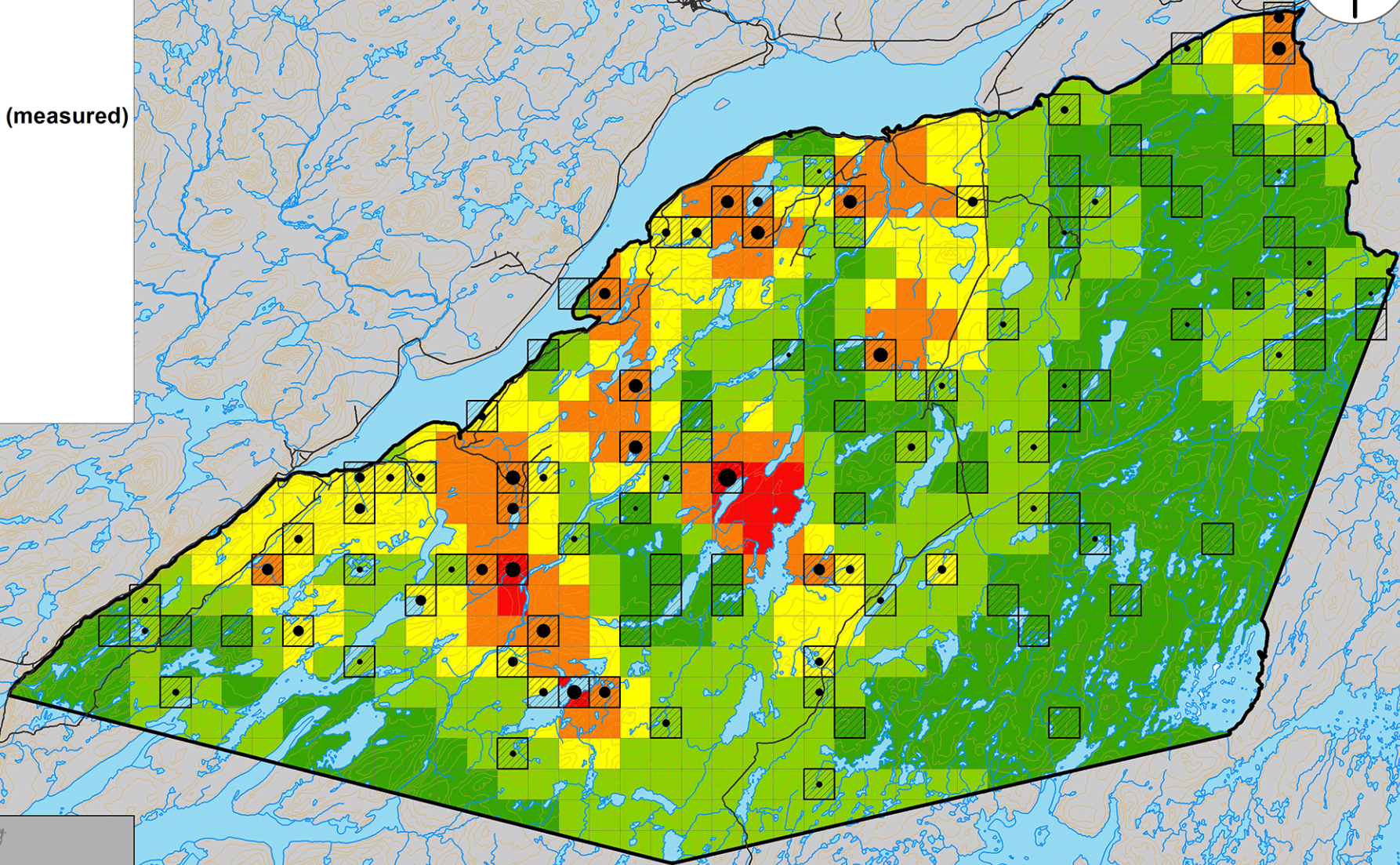
Moose Density (estimated)



Moose Density (measured)



MMA 17: Millertown Moose Winter Distribution (Estimated): 2021 Survey



Disclaimer:
This map is intended to illustrate where moose may exist in higher vs lower density, not as a definitive guide to moose occurrence. Data was collected between January and March of the survey year. Distribution during any other season may differ.