

Rattling Brook Newfoundland Moose Management Area 21



RATTLING
BROOK
MMA 21



1:180,000

Kilometers
0 5 10
NAD1983 Zone 21N

MOOSE MANAGEMENT AREA 21 RATTLING BROOK

All that area of the Island of Newfoundland bounded by a line beginning at the western abutment of the bridge crossing Rattling Brook along the Trans Canada Highway, TCH, Route 1; then following the western bank of Rattling Brook in a southerly direction to its confluence with Rattling Lake; then following the western and then southern shoreline of Rattling Lake in a southeasterly direction to the stream at its southeastern extremity; then following the southwestern bank of this stream to the southwestern shoreline of an unnamed pond and continuing on in a southeasterly direction to a stream flowing from Upper Christmas Pond; then following the western then southern shoreline of Upper Christmas Pond in a southeasterly direction to the main channel of the stream flowing from an unnamed pond; then following the western shoreline of said unnamed pond in a generally southerly direction to a brook at its southern extremity; then following the southwestern bank of said brook in a southeasterly direction to its confluence with Lewis Pond; then following the southwestern shoreline of Lewis Pond in a southeasterly direction to a stream flowing from Little Dowd Pond; then following the southern bank of this stream in a southeasterly direction to Little Dowd Pond; then following the western, then southern shorelines of Little Dowd Pond in a southerly direction to a stream at said pond's southern extremity; then following the western bank of said stream in a southeasterly direction to Dowd Pond; then following the western, then southern shorelines of Dowd Pond to a brook at said pond's southeastern extremity; then following a straight line in a southwesterly direction to the eastern bank of the mouth of Great Gull River on the Northwest Gander River; then following the southern bank of the Northwest Gander River in a generally westerly then southwesterly direction to UTM coordinates 601894 metres east and 5368055 metres north; then following a straight line in a westerly by northwesterly direction to a small pond on the headwaters of South Great Rattling Brook at UTM coordinates 585800 metres east and 5370902 metres north; then following a straight line in a northwesterly direction to the eastern extremity of Pistol Lake; then following a straight line in a northeasterly direction to the eastern extremity of Island Pond; then following a straight line in a northeasterly direction to the western bank of Great Rattling Brook at UTM coordinates 608314 metres east and 5420444 metres north; then following the western bank of Great Rattling Brook in a generally northwesterly direction to its confluence with the Exploits River; then following the southeastern bank of the Exploits River in a northeasterly direction to Beatons Point on the southeastern shoreline of the Bay of Exploits; then following the coastline of the Bay of Exploits in a southeasterly direction to its confluence with Rattling Brook; then following the western bank of Rattling Brook in a generally southerly direction to the point of commencement; excluding all offshore islands.

Note: This map has been prepared as a convenient reference only. It is not a legal document. The Wildlife Act and Regulations and the Annual Hunting Orders published therein should be consulted for all purposes of interpreting and applying the law. Contact the Newfoundland & Labrador Wildlife Division.

Created by: Wildlife Division
Department of Fisheries, Forestry & Agriculture
Date: October 2020

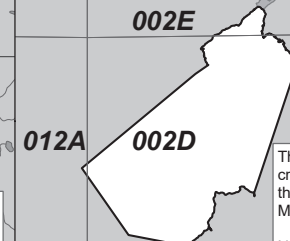
Small pond on the headwaters of
South Great Rattling Brook at UTM
coordinates 585800 mE and 5370902 mN

Northwest Gander River at
UTM coordinates 601894
mE and 5368055 mN

Eastern bank of the mouth of Great Gull
River on the Northwest Gander River

PACK IT IN - PACK IT OUT
Garbage and litter on our landscape is becoming a serious problem. The best and only alternative for garbage is a Pack It In, Pack It Out policy. You carried in all those containers, boxes - packages when they were full; it's a lot easier to carry them out when they are empty. Please take your garbage home with you and dispose of it in the proper manner.

National Topographic Series Reference Index 1:250000



The following maps are
crossed by the outline of the
Rattling Brook Moose
Management Area 21.

National Topographic
Series Map 250,000
Reference List:

002-D, 002-E, 012-A

WILDLIFE DIVISION HEADQUARTERS
P.O. Box 2007, 192 Wheelers Road
Corner Brook, NL A2H 7S1
(709) 637-2025

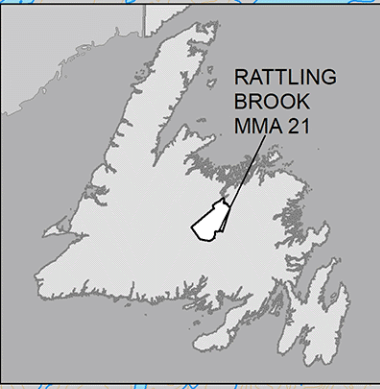
Regional Wildlife Offices
Goose Bay, 896-7930
St. John's, 729-2630

Fish and Wildlife Enforcement
Report Poaching Toll Free 1-877-820-0999
Western Regional Office - 637-2971
Labrador Regional Office - 896-7973
Eastern Regional Office - 729-2192

REGIONAL FORESTRY OFFICES
Labrador, Goudie Building, P.O. Box 3014,
Station B, Happy Valley, A0P 1E0,
896-2732
Western, Forestry Building, Massey Dr., P.O.
Box 2006, Corner Brook, A2H 6J8,
637-2370
Eastern, Gander Public Building, Airport Blvd,
P.O. Box 2222, Gander, A1V 2N9,
256-1450

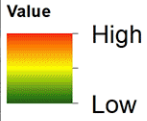
MMA 21: Rattling Brook

Moose Winter Distribution (Estimated): 2021 Survey

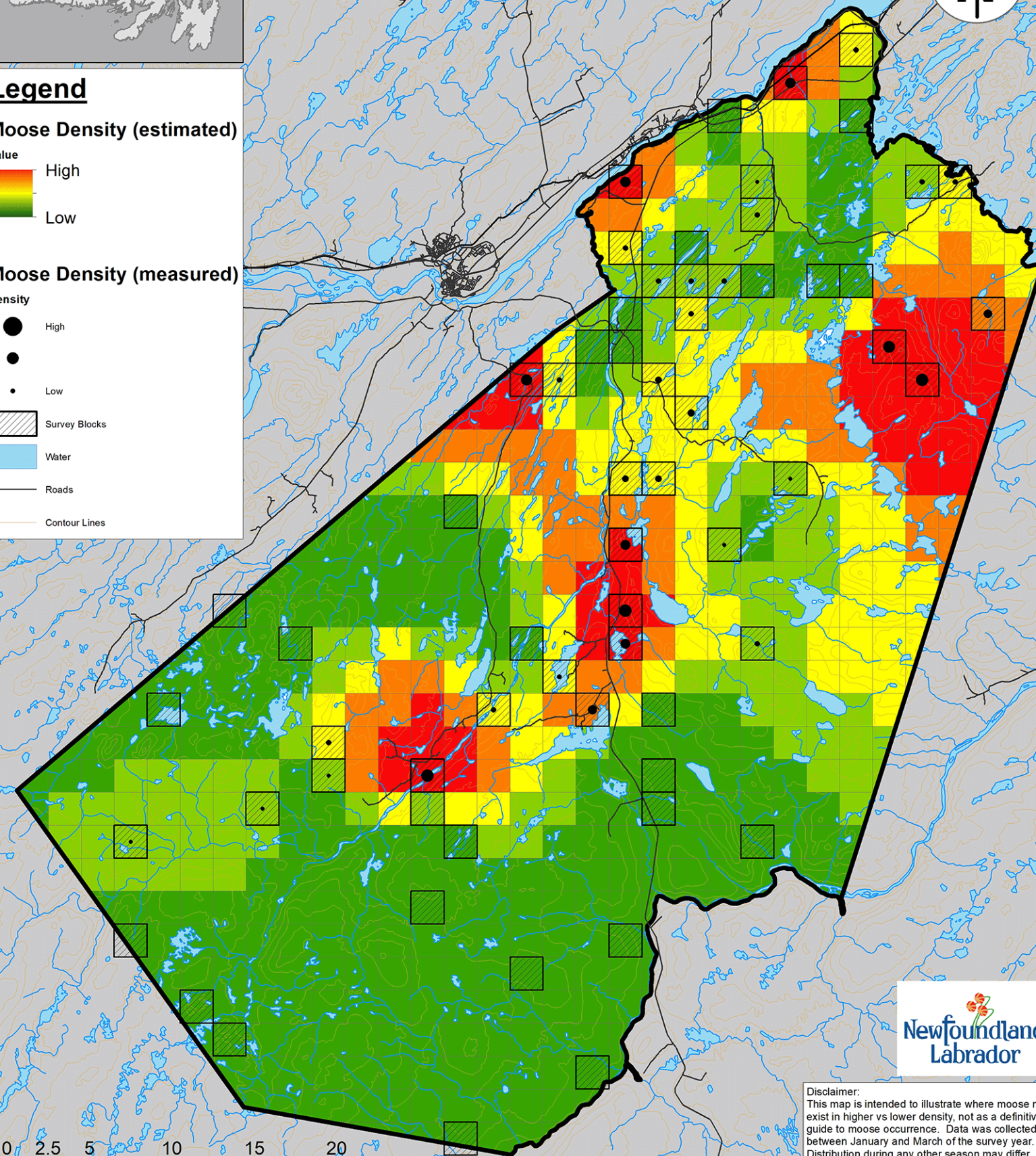
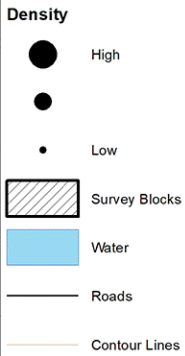


Legend

Moose Density (estimated)



Moose Density (measured)



Disclaimer:
This map is intended to illustrate where moose may exist in higher vs lower density, not as a definitive guide to moose occurrence. Data was collected between January and March of the survey year. Distribution during any other season may differ.

Created by: Wildlife Division
Department of Fisheries, Forestry & Agriculture
Date: July 2022