

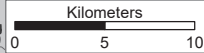
Lewisporte Newfoundland Moose Management Area 22



LEWISPORTE
MMA 22



1:210,000



NAD1983 Zone 21N

WILDLIFE DIVISION HEADQUARTERS
P.O. Box 2007, 192 Wheelers Road
Corner Brook, NL A2H 7S1
(709) 637-2025

Regional Wildlife Offices
Goose Bay, 896-7930
St. John's, 729-2630

Fish and Wildlife Enforcement
Report Poaching Toll Free 1-877-820-0999
Western Regional Office – 637-2971
Labrador Regional Office – 896-7973
Eastern Regional Office – 729-2192

PACK IT IN - PACK IT OUT
Garbage and litter on our landscape is becoming a serious problem. The best and only alternative for garbage is a Pack It In, Pack It Out policy. You carried in all those containers, boxes - packages when they were full; it's a lot easier to carry them out when they are empty. Please take your garbage home with you and dispose of it in the proper manner.

Confluence of the southeastern bank of the Gander River and the western shoreline of Gander Bay

REGIONAL FORESTRY OFFICES
Labrador, Goudie Building, P.O. Box 3014,
Station B, Happy Valley, A0P 1E0,
896-2732
Western, Forestry Building, Massey Dr., P.O.
Box 2006, Corner Brook, A2H 6J8,
637-2370
Eastern, Gander Public Building, Airport Blvd.,
P.O. Box 2222, Gander, A1V 2N9,
256-1450

**National Topographic Series
Reference Index 1:250000**

The following maps are crossed by the outline of the Lewisporte Moose Management Area 22.

National Topographic Series Map 250,000 Reference List:
002-D, 002-E

**MOOSE MANAGEMENT AREA 22
LEWISPORTE**

All that area of the Island of Newfoundland bounded by a line beginning at the eastern abutment of a bridge crossing Rattling Brook along the Trans Canada Highway, TCH, Route 1; then following the eastern bank of Rattling Brook in a northerly direction to its confluence with the Bay of Exploits; then following the eastern shoreline of the Bay of Exploits in a generally northeasterly direction to Southern Head; then following the coastline of insular Newfoundland in a generally northeasterly direction to Dog Bay Point; then following the western shoreline of Gander Bay in a generally southerly direction to its confluence with the southeastern bank of the Gander River; then following the southeastern bank of the Gander River in a generally southwesterly direction to its intersection with the southern abutment of a T'Railway bridge near Glenwood; then following the T'Railway in a westerly direction to its intersection with the Nalcor Energy Transmission line; then following said transmission line in a generally westerly by southwesterly direction to its intersection with the small pond to the northwest of a stream connected to Little Dowd Pond; then following the southern bank of this stream in a westerly direction to its confluence with Lewis Pond; then following the western shoreline of Lewis Pond in a northwesterly direction to a stream at its northwestern extremity; then following the western bank of this unnamed stream in a northeasterly direction to an unnamed pond; then following the western shoreline of the unnamed pond in a generally northerly direction to a stream at its northern extremity; then following the eastern branch of this unnamed stream in a northwesterly direction to Upper Christmas Pond; then following the western shoreline of Upper Christmas Pond in a generally northwesterly direction to an unnamed brook; then following the western bank and western shoreline of the unnamed brook and unnamed pond in a generally northwesterly direction, respectively to a stream connected to Rattling Lake; then following this unnamed stream in a northwesterly direction to Rattling Lake; then following the southeastern, then western shorelines of Rattling Lake in a northeasterly direction to the stream at its northwestern extremity; then following the western bank of Rattling Brook in a generally northerly direction to the point of commencement; excluding all offshore islands except Birchy Island, Chapel Island, Coal All Island, Dunnage Island, Farmers Island, Long Island, New World Island, Sivier Island, Thwart Island, and Upper Black Island.

- Confluence of Rattling Brook and the Bay of Exploits
- Eastern abutment of a bridge crossing Rattling Brook along the Trans Canada Highway, TCH, Route 1
- Outlet of Rattling Brook at Rattling Lake
- Confluence of an unnamed stream and a stream connected to Rattling Lake
- Confluence of an unnamed stream and Upper Christmas Pond
- Intersection of the Nalcor Energy Transmission Line with the brook flowing from Little Dowd Pond
- Intersection of the T'Railway and the southern abutment of a T'Railway Bridge near Glenwood
- Intersection of the Nalcor Energy Transmission Line

Created by: Wildlife Division
Department of Fisheries, Forestry & Agriculture
Date: October 2020

Note: This map has been prepared as a convenient reference only. It is not a legal document. The Wildlife Act and Regulations and the Annual Hunting Orders published therein should be consulted for all purposes of interpreting and applying the law. Contact the Newfoundland & Labrador Wildlife Division.

B C D E F G H

1
2
3
4
5
6
7
8
9

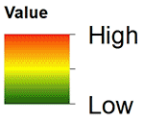
MMA 22: Lewisporte

Moose Winter Distribution (Estimated): 2017 Survey

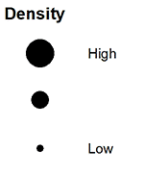


Legend

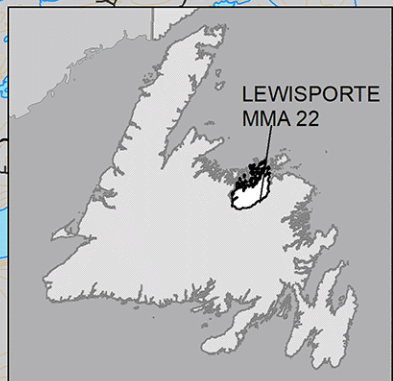
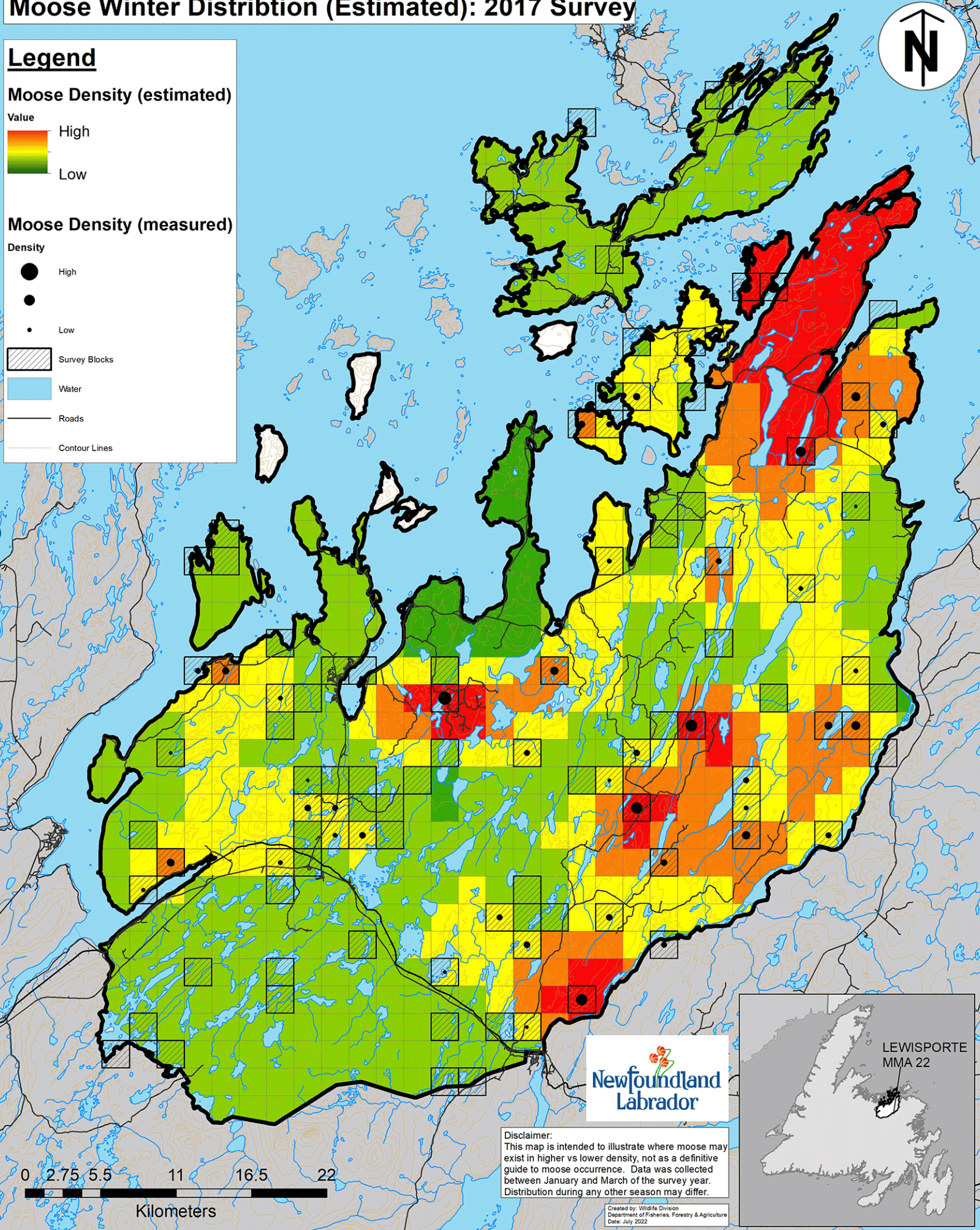
Moose Density (estimated)



Moose Density (measured)



- Survey Blocks
- Water
- Roads
- Contour Lines



Disclaimer:
 This map is intended to illustrate where moose may exist in higher vs lower density, not as a definitive guide to moose occurrence. Data was collected between January and March of the survey year. Distribution during any other season may differ.

Created by: Wildlife Division
 Department of Fisheries, Forestry & Agriculture
 Date: July 2022