

Terra Nova Newfoundland Moose Management Area 27



TERRA NOVA
MMA 27



**MOOSE MANAGEMENT AREA 27
TERRA NOVA**
All that area of the Island of Newfoundland bounded by a line beginning at the confluence of the eastern bank of Great Gull River with the southern bank of the Northwest Gander River; then following a straight line in a generally easterly direction to the confluence of Dennis Brook and the Southwest Gander River; then following a straight line in an easterly by northeasterly direction to the western extremity of an unnamed pond at UTM coordinates 661224 metres east and 5386648 metres north; then following the northern shoreline of this pond in a generally northeasterly direction to its confluence with Riverhead Brook; then following the north bank of Riverhead Brook in a northeasterly direction to its confluence with Gambo Pond; then following the southern shoreline of Gambo Pond in a generally northeasterly direction to its intersection with the western bank of Parsons Pond Brook; then following the western bank of Parsons Pond Brook in a southeasterly direction to its confluence with Parsons Pond; then following a straight line in a southeasterly direction to the western extremity of Maccles Lake; then following the southern shoreline of Maccles Lake in a generally southeasterly, then easterly direction to a small stream at UTM coordinates 711472 metres east and 5388311 metres north; then following the northeastern bank of said stream in a northeasterly direction to its intersection with the T'Railway; then following the T'Railway in a generally southerly direction to its intersection with Salmon Brook; then following the southeastern bank of Salmon Brook in a southwesterly direction to its intersection with Salmon Pond; then following the northwestern shoreline of Salmon Pond in a southwesterly direction to a stream at its southwestern extremity; then following the northwestern bank of this tributary in a generally southwesterly direction to the outflow of a brook at the southern extremity of an unnamed pond at UTM coordinates 693098 metres east and 5354530 metres north; then following the northern and eastern banks of this tributary in a generally southerly then easterly direction to Saddle Pond; then following the northern shoreline of Saddle Pond in a generally easterly direction to its easternmost extremity; then following a straight line in a southeasterly direction to the northwestern extremity of Norsemans Pond; then following a straight line in a northerly direction to the point of commencement.

WILDLIFE DIVISION HEADQUARTERS
P.O. Box 2007, 192 Wheelers Road
Corner Brook, NL, A2H 7S1
(709) 637-2025

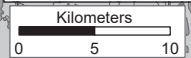
Regional Wildlife Offices
Goose Bay, 896-7930
St. John's, 729-2630

Fish and Wildlife Enforcement
Report Poaching Toll Free 1-877-820-0999
Western Regional Office - 637-2971
Labrador Regional Office - 896-7973
Eastern Regional Office - 729-2192

Note: This map has been prepared as a convenient reference only. It is not a legal document. The Wildlife Act and Regulations and the Annual Hunting Orders published therein should be consulted for all purposes of interpreting and applying the law. Contact the Newfoundland & Labrador Wildlife Division.

Created by: Wildlife Division
Department of Fisheries, Forestry & Agriculture
Date: November 2020

1:250,000



NAD1983 Zone 21N

PACK IT IN - PACK IT OUT
Garbage and litter on our landscape is becoming a serious problem. The best and only alternative for garbage is a Pack It In, Pack It Out policy. You carried in all those containers, boxes - packages when they were full, it's a lot easier to carry them out when they are empty. Please take your garbage home with you and dispose of it in the proper manner.

REGIONAL FORESTRY OFFICES
Labrador, Goudie Building, P.O. Box 3014,
Station B, Happy Valley, A0P 1E0,
896-2732

Western, Forestry Building, Massey Dr., P.O.
Box 2006, Corner Brook, A2H 6J8,
637-2370

Eastern, Gander Public Building, Airport Blvd.,
P.O. Box 2222, Gander, A1V 2N9,
256-1450

**National Topographic Series
Reference Index 1:250000**



The following map is crossed by the outline of the Terra Nova Moose Management Area 27.

National Topographic Series Map 250,000 Reference List:

002-D

Confluence of the eastern bank of Great Gull River with the southern bank of Northwest Gander River

Confluence of Dennis Brook and the Southwest Gander River

Western extremity of an unnamed pond at UTM coordinates 661224 mE and 5386648 mN

Confluence of Riverhead Brook with Gambo Pond

Intersection of Gambo Pond and the western bank of Parsons Pond Brook

Confluence of Parsons Pond Brook with Parsons Pond

A small stream at UTM coordinates 711472 mE and 5388311 mN

Western extremity of Maccles Lake

Confluence of Great Gull Lake with Great Gull River

Southern extremity of Great Gull Lake

Intersection of the T'Railway and Salmon Brook

Intersection of Salmon Brook and Salmon Pond

Stream at the southwestern extremity of Salmon Pond

Brook outflow at the southern extremity of an unnamed pond at UTM coordinates 693098 mE and 5354530 mN

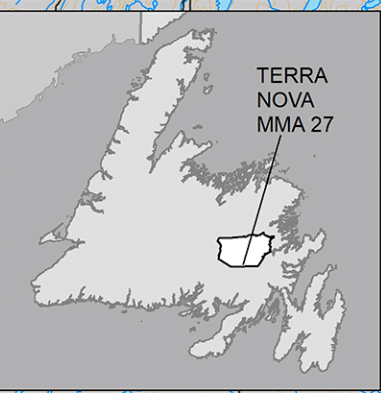
Easternmost extremity of Saddle Pond

Northwestern extremity of Norsemans Pond

B C D E F G H I J K L M

2
3
4
5
6
7
8

MMA 27: Terra Nova Moose Winter Distribution (Estimated): 2020 Survey

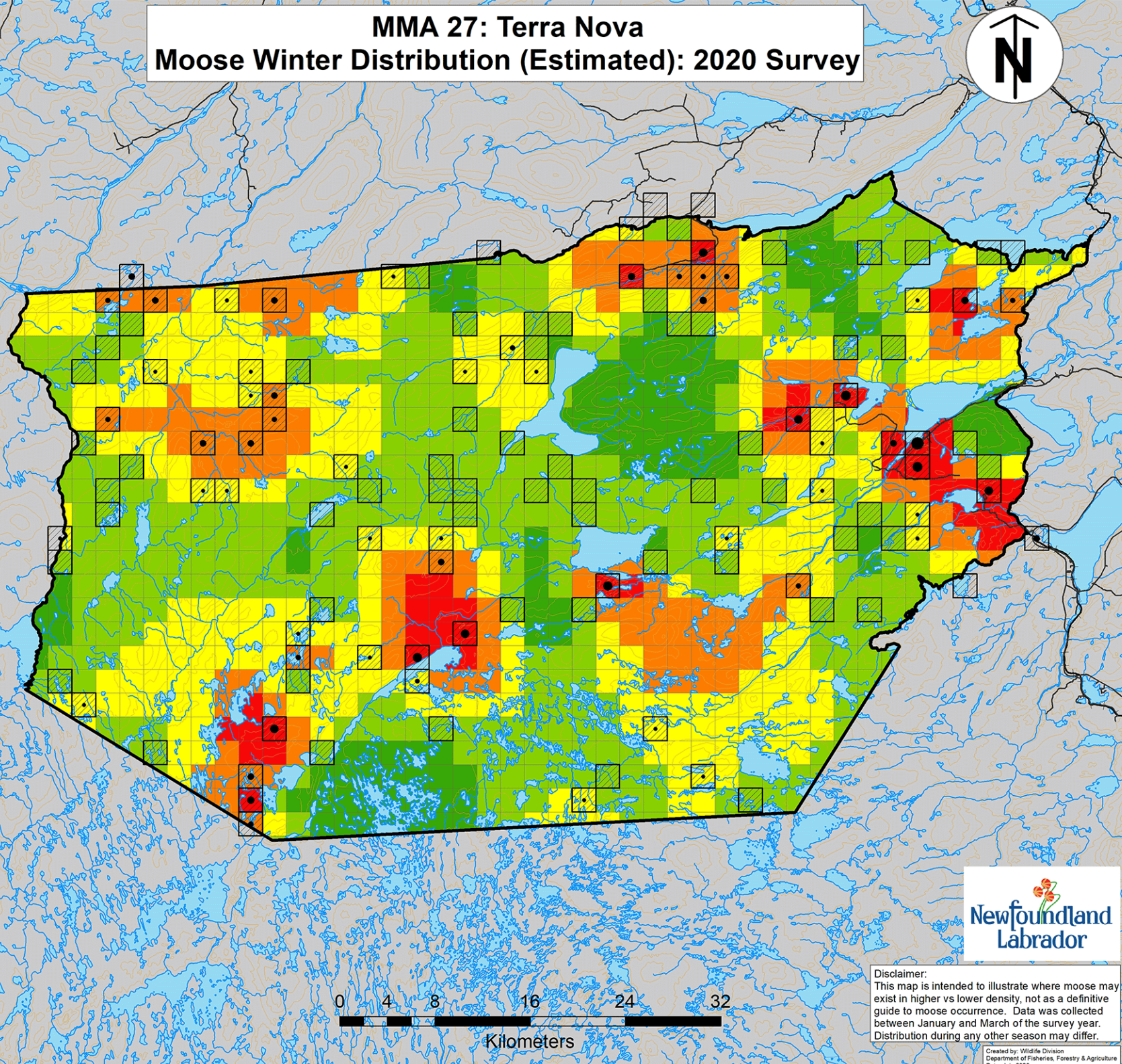


Legend

Moose Density (estimated)
Value
High
Low

Moose Density (measured)
Density
High
Low

Survey Blocks
Water
Roads
Contour Lines



Disclaimer:
This map is intended to illustrate where moose may exist in higher vs lower density, not as a definitive guide to moose occurrence. Data was collected between January and March of the survey year. Distribution during any other season may differ.