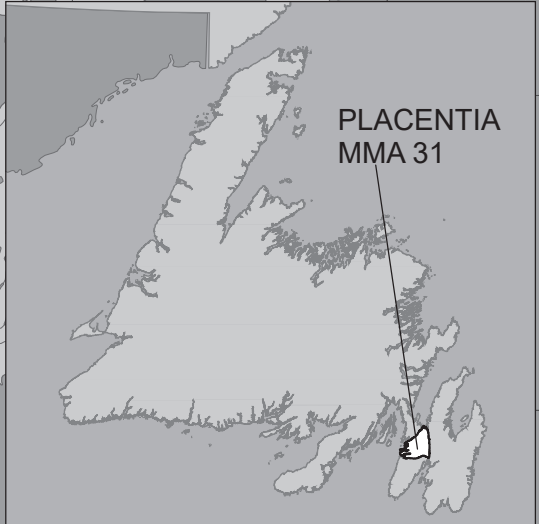


# Placentia Newfoundland Moose Management Area 31



All that area of the Island of Newfoundland bounded by a line beginning at the outflow of Bottom Brook into Long Harbour; then following Bottom Brook in a northwesterly direction to its intersection with a paved road; then following this road in a southeasterly direction to the main Long Harbour road, Route 202; then following said road in a northeasterly direction to its intersection with the Trans Canada Highway, TCH, Route 1; then crossing the TCH in a northeasterly direction to the Chapel Arm Highway; then following the Chapel Arm Highway in a northeasterly direction to its intersection with Western Cove Brook; then following the eastern bank of said brook in a northeasterly direction to its confluence with Western Cove, Chapel Arm; then following Chapel Arm in a northeasterly direction to Southern Point; then following the coastlines of Spread Eagle Bay and Dildo Arm in a generally southeasterly direction to South Dildo Brook; then following the northeastern bank of South Dildo Brook to its intersection with Route 80; then following Route 80 in a generally southerly direction to its intersection with Route 81 at Whitbourne; then following the Markland Road, Route 81, in a southerly direction to the western abutment of the Route 91 bridge crossing the Colinet River; then following the coastline of Colinet Bay in a southwesterly, then northwesterly direction to the eastern abutment of the Route 91 bridge crossing the Black Duck River; then following Route 91 in a generally westerly direction to a point near Southeast Arm, Placentia Bay at UTM coordinates 279969 metres east and 5233509 metres north; then following the shortest straight line distance to the southeast extremity of Southeast Arm; then following the northern shoreline of Southeast Arm in a northwesterly direction to Point Mal; then following the coastline of insular Newfoundland in a generally northeasterly direction to the point of commencement; excluding all offshore islands and excluding the Argientia Military Reservation described as follows:



PLACENTIA  
MMA 31



National Topographic Series  
Reference Index 1:250000



All that area of the Avalon Peninsula beginning at a point on the south shoreline of Placentia Sound, near its easterly extremity, that point being a bronze disc set in concrete marked "Boundary Line - U.S. Military Reservation" and designated here as point A-1 at approximately 47° 52' 19" north latitude and 53° 52' 18" west longitude, that point being the principal point of beginning; then south 31° 06' 57.27" east 661.76 metres; then south 18° 32' 54.72" east 442.26 metres to the north line of the right-of-way of the Old Newfoundland Railway; Then following the north line of the right-of-way of the Old Newfoundland Railway southerly and westerly a point which is south 63° 19' 28.74" west 6,747.72 metres from the last described point; then south 63° 33' 52.11" west 342.18 metres; then south 85° 41' 28.72" west 2572.66 metres; then south 66° 03' 03.92" west 569.35 metres to the southeast corner of Lot No. 86 in the Freshwater development as shown on plan titled "FRESHWATER, SETTLEMENT-PLACENTIA" dated December 1941 by the Department of Public Works - Roads Division, Newfoundland Government; then along the south line of Lot No. 86, south 48° 55' 40.71" west 121.92 metres to the southwest corner of Lot No. 86 and the east line of a road right-of-way in the Freshwater development; then along the east line of the road right-of-way north 41° 04' 19.29" west 55.58 metres north 25° 04' 19.29" west 272.36 metres to the northwest corner of Lot No. 107 in the Freshwater development; then along the north line of the Lot No. 107 north 64° 55' 40.71" east 121.92 metres to the northeast corner of the Lot No. 107; then north 25° 04' 19.29" west 494.16 metres; then south 80° 52' 24.78" west 825.79 metres to a bronze disc set in concrete and marked "Moll" - U.S. Navy Hydrographic Office"; then south 80° 52' 24.78" west 44.20 metres more or less to the shoreline of Placentia Bay; then northerly following the sinuosities of the shoreline of Placentia Bay, around the entire Argientia Peninsula and the south shore of Argientia Harbour and Placentia Sound to the principal point of beginning, all bearings are true.

The following maps are crossed by the outline of the Placentia Moose Management Area 31.

National Topographic Series Map 250,000 Reference List:  
001-M, 001-N

Note: This map has been prepared as a convenient reference only. It is not a legal document. The Wildlife Act and Regulations and the Annual Hunting Orders published therein should be consulted for all purposes of interpreting and applying the law. Contact the Newfoundland & Labrador Wildlife Division.

Created by: Wildlife Division  
Department of Fisheries, Forestry & Agriculture  
Date: November 2020

WILDLIFE DIVISION HEADQUARTERS  
P.O. Box 2007, 192 Wheelers Road  
Corner Brook, NL A2H 7S1  
(709) 637-2025

Regional Wildlife Offices  
Goose Bay, 896-7930  
St. John's, 729-2630  
  
Fish and Wildlife Enforcement  
Report Poaching Toll Free 1-877-820-0999  
Western Regional Office - 637-2971  
Labrador Regional Office - 896-7973  
Eastern Regional Office - 729-2192

PACK IT IN - PACK IT OUT  
Garbage and litter on our landscape is becoming a serious problem. The best and only alternative for garbage is a Pack It In, Pack It Out policy. You carried in all those containers, boxes - packages when they were full; it's a lot easier to carry them out when they are empty. Please take your garbage home with you and dispose of it in the proper manner.

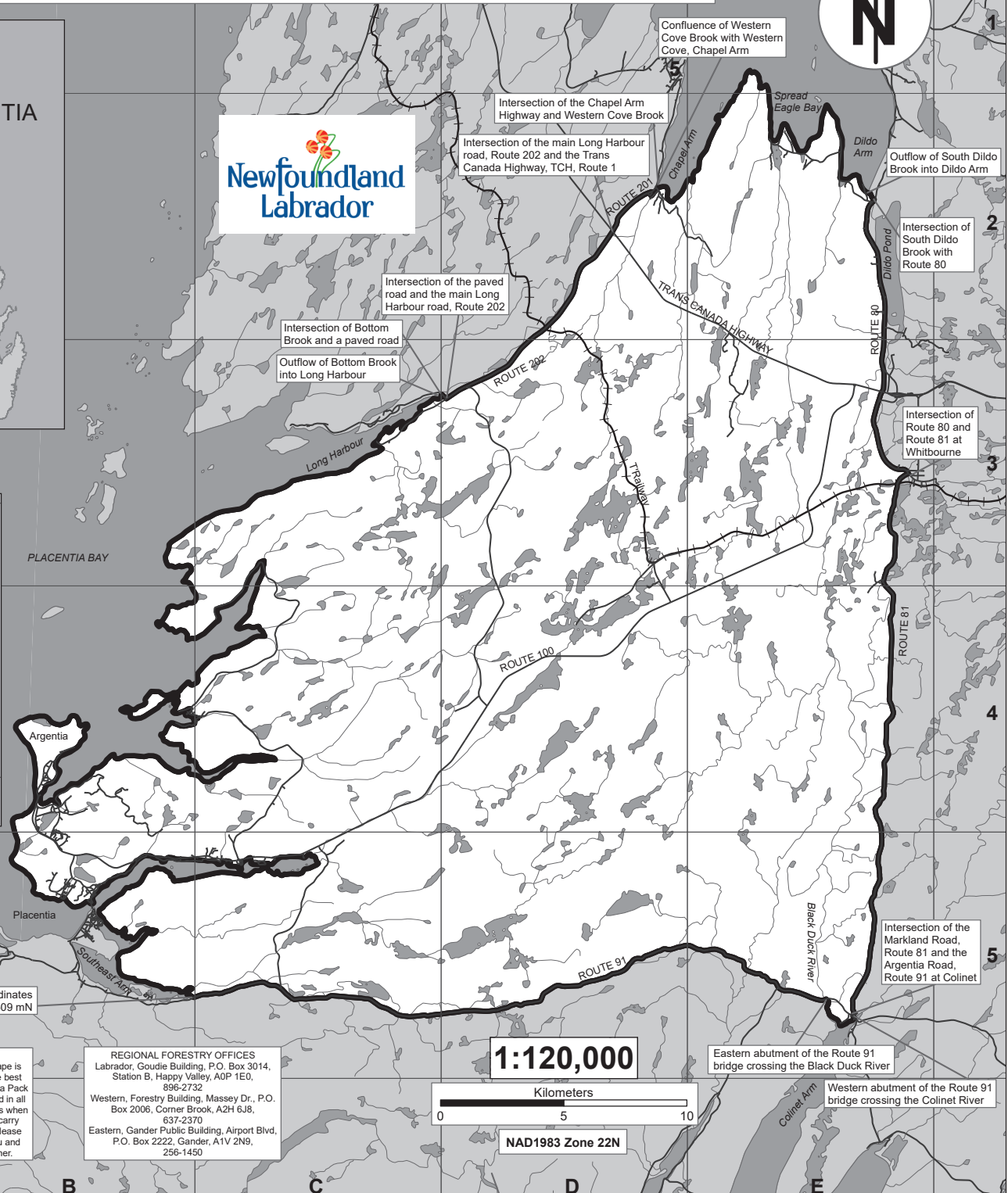
REGIONAL FORESTRY OFFICES  
Labrador, Goudie Building, P.O. Box 3014,  
Station B, Happy Valley, A0P 1E0,  
896-2732.  
Western, Forestry Building, Massey Dr., P.O.  
Box 2006, Corner Brook, A2H 6J8,  
637-2370  
Eastern, Gander Public Building, Airport Blvd.,  
P.O. Box 2222, Gander, A1V 2N9,  
256-1450

Route 91 at UTM coordinates  
279969 mE and 5233509 mN

1:120,000



NAD1983 Zone 22N



Confluence of Western Cove Brook with Western Cove, Chapel Arm

Intersection of the Chapel Arm Highway and Western Cove Brook

Intersection of the main Long Harbour road, Route 202 and the Trans Canada Highway, TCH, Route 1

Outflow of South Dildo Brook into Dildo Arm

Intersection of South Dildo Brook with Route 80

Intersection of the paved road and the main Long Harbour road, Route 202

Intersection of Bottom Brook and a paved road

Outflow of Bottom Brook into Long Harbour

Intersection of Route 80 and Route 81 at Whitbourne

Intersection of the Markland Road, Route 81 and the Argientia Road, Route 91 at Colinet

Eastern abutment of the Route 91 bridge crossing the Black Duck River

Western abutment of the Route 91 bridge crossing the Colinet River

A

B

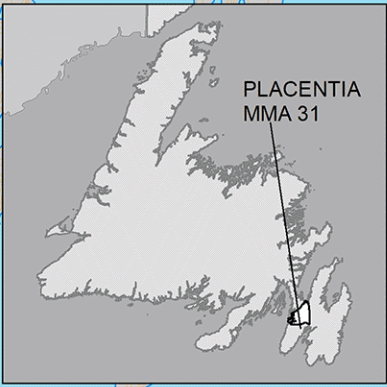
C

D

E

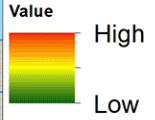
# MMA 31: Placentia

## Moose Winter Distribution (Estimated): 2020 Survey

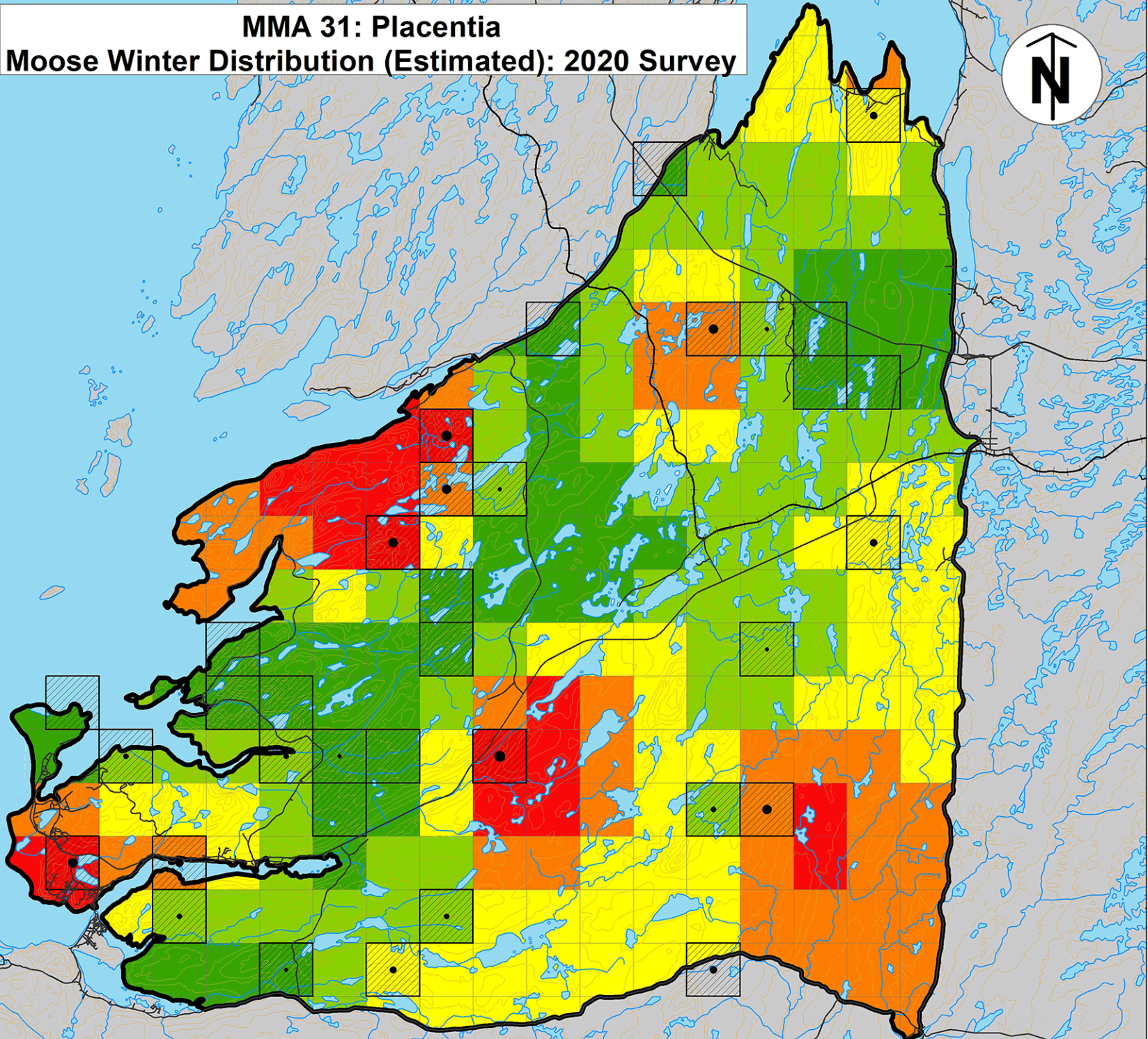
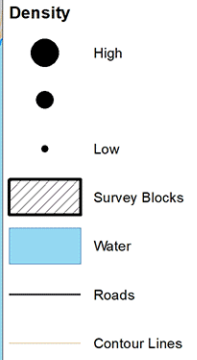


### Legend

#### Moose Density (estimated)



#### Moose Density (measured)



**Disclaimer:**  
This map is intended to illustrate where moose may exist in higher vs lower density, not as a definitive guide to moose occurrence. Data was collected between January and March of the survey year. Distribution during any other season may differ.

Created by: Wildlife Division  
Department of Fisheries, Forestry & Agriculture  
Date: July 2022

