

# Cape Shore Newfoundland Moose Management Area 32



CAPE SHORE  
MMA 32



The southeastern extremity of Southeast Arm, Route 91 at UTM coordinates 279969 mE and 5233509 mN

Western abutment of a bridge crossing the Black Duck River

Confluence of Black Duck River with Colinet Arm, St. Mary's Bay

**MOOSE MANAGEMENT AREA 32  
CAPE SHORE**

All that area of the Island of Newfoundland bounded by a line beginning at the southeastern extremity of Southeast Arm, Placentia Bay; then following the shortest straight line distance to the Argentia Road, Route 91, at UTM coordinates 279969 metres east and 5233509 metres north; then following the Argentia Road in a generally easterly direction to the western abutment of a bridge crossing the Black Duck River; then following the southwestern bank of Black Duck River in a southeasterly direction to its confluence with Colinet Arm, St. Mary's Bay; then following the western shorelines of Colinet Arm, North Harbour, and St. Mary's Bay in a generally southwesterly direction to Big Head; then following the coastline of insular Newfoundland in a northwesterly direction to Cape St. Mary's; then following the coastline of insular Newfoundland in a northeasterly direction to Cape Down Point; then following the southern shoreline of Placentia Bay and Southeast Arm in a generally easterly direction to the point of commencement; excluding all offshore islands.

**WILDLIFE DIVISION HEADQUARTERS**  
P.O. Box 2007, 192 Wheelers Road  
Corner Brook, NL A2H 7S1  
(709) 637-2025

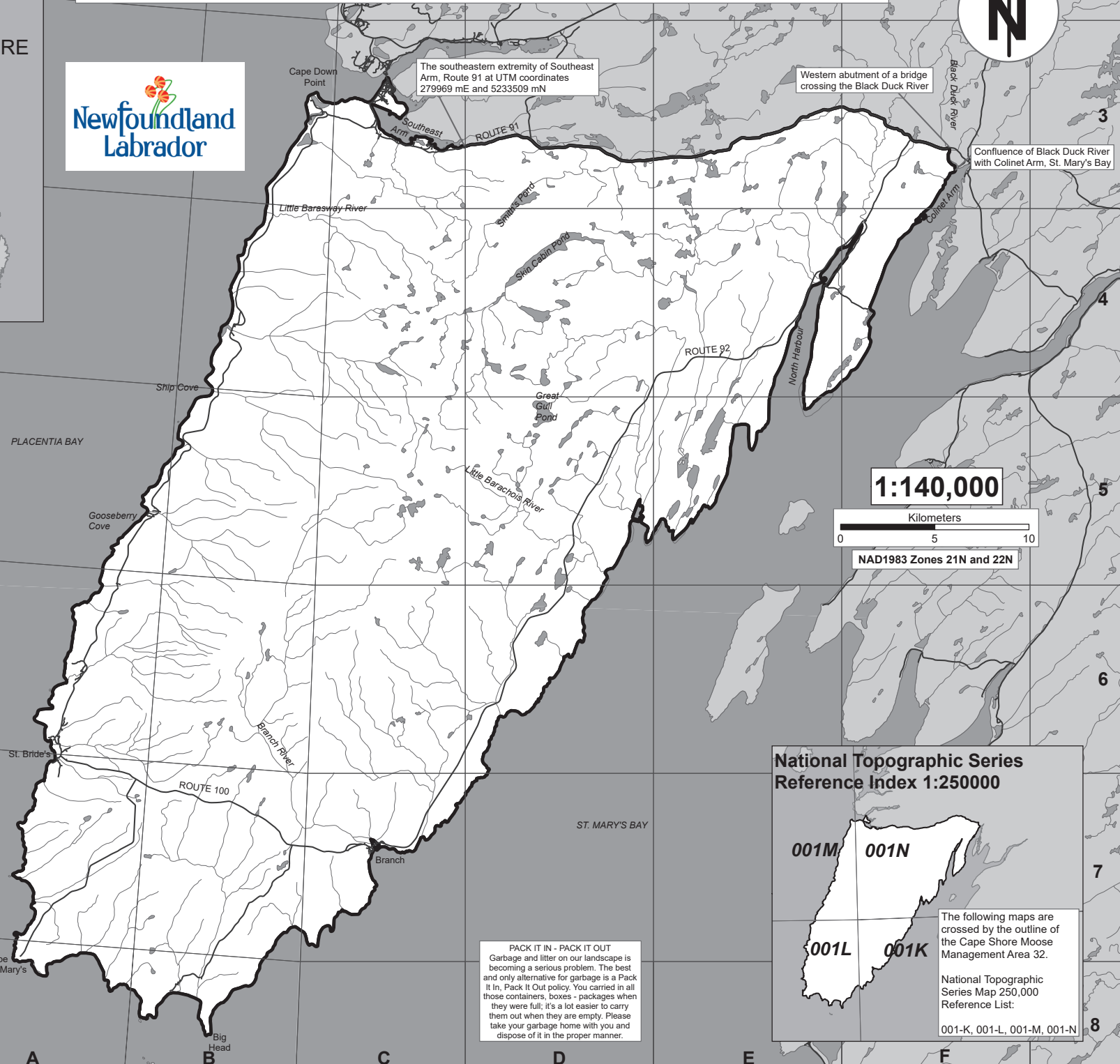
**Regional Wildlife Offices**  
Goose Bay, 896-7930  
St. John's, 729-2630

**Fish and Wildlife Enforcement**  
Report Poaching Toll Free 1-877-820-0999  
Western Regional Office – 637-2971  
Labrador Regional Office – 896-7973  
Eastern Regional Office – 729-2192

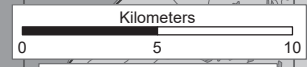
**REGIONAL FORESTRY OFFICES**  
Labrador, Goudie Building, P.O. Box 3014,  
Station B, Happy Valley, A0P 1E0,  
896-2732  
Western, Forestry Building, Massey Dr., P.O.  
Box 2006, Corner Brook, A2H 6J8,  
637-2370  
Eastern, Gander Public Building, Airport Blvd,  
P.O. Box 2222, Gander, A1V 2N9,  
256-1450

Created by: Wildlife Division  
Department of Fisheries, Forestry & Agriculture  
Date: November 2020

Note: This map has been prepared as a convenient reference only. It is not a legal document. The Wildlife Act and Regulations and the Annual Hunting Orders published therein should be consulted for all purposes of interpreting and applying the law. Contact the Newfoundland & Labrador Wildlife Division.

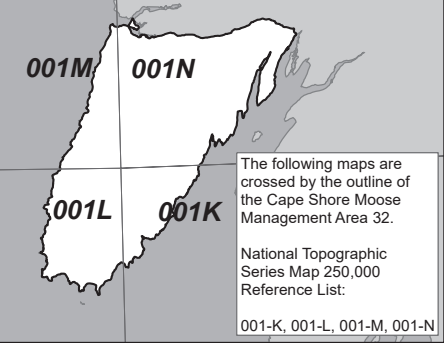


**1:140,000**



NAD1983 Zones 21N and 22N

**National Topographic Series  
Reference Index 1:250000**



The following maps are crossed by the outline of the Cape Shore Moose Management Area 32.

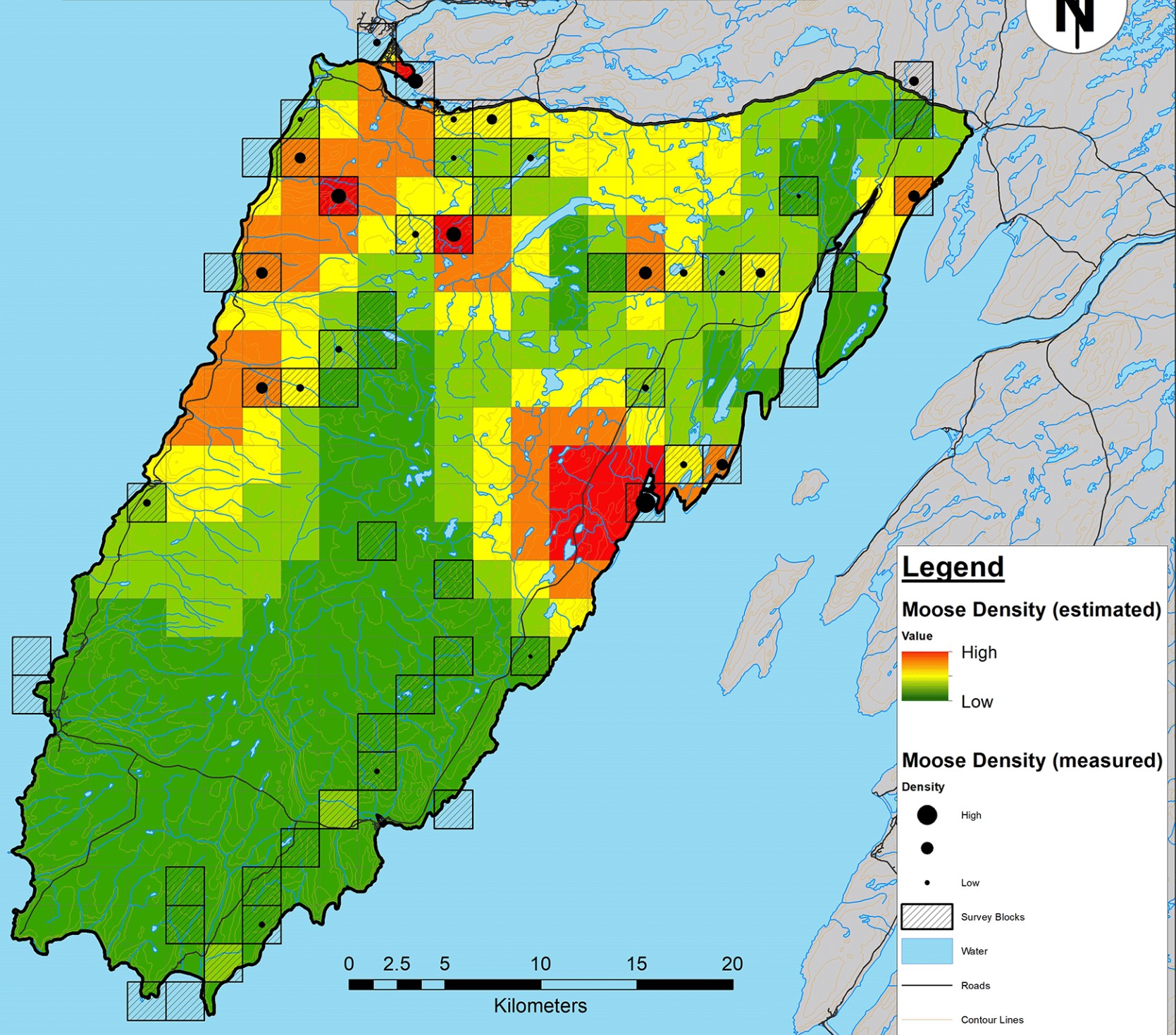
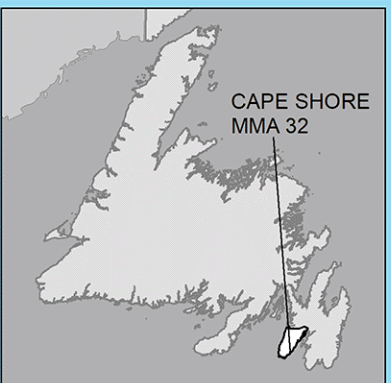
National Topographic Series Map 250,000 Reference List:

001-K, 001-L, 001-M, 001-N

**PACK IT IN - PACK IT OUT**  
Garbage and litter on our landscape is becoming a serious problem. The best and only alternative for garbage is a Pack It In, Pack It Out policy. You carried in all those containers, boxes - packages when they were full; it's a lot easier to carry them out when they are empty. Please take your garbage home with you and dispose of it in the proper manner.

# MMA 32: Cape Shore

## Moose Winter Distribution (Estimated): 2020 Survey



**Legend**

**Moose Density (estimated)**

Value

High  
Low

**Moose Density (measured)**

Density

- High
- Low

- Survey Blocks
- Water
- Roads
- Contour Lines



**Disclaimer:**  
This map is intended to illustrate where moose may exist in higher vs lower density, not as a definitive guide to moose occurrence. Data was collected between January and March of the survey year. Distribution during any other season may differ.

Created by: Wildlife Division  
Department of Fisheries, Forestry & Agriculture  
Date: July 2020

