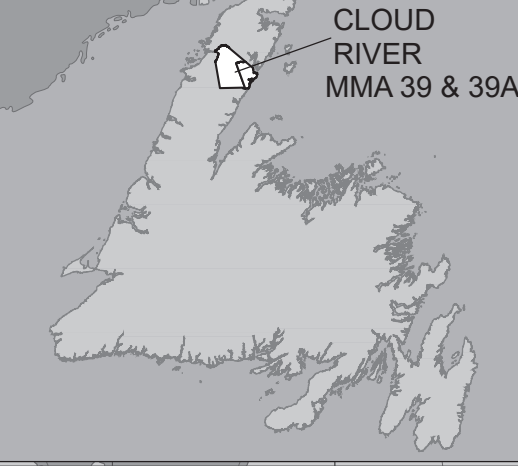


Cloud River Newfoundland Moose Management Area 39 & 39A



CLOUD RIVER
MMA 39 & 39A



**MOOSE MANAGEMENT AREA 39A
CLOUD RIVER**

All that area of the Island of Newfoundland bounded by a line beginning at a point on the Cloud River at UTM coordinates 548616 meters east and 5628482 meters north; then following a straight line in a southeasterly direction to the outflow of a brook into Torrent Cove, Canada Bay; then following the coastline of Canada Bay and the eastern coastline of the Great Northern Peninsula in a generally southerly direction to Fourche Harbour; then following the northern coastline of Fourche Harbour to the outflow of a brook at Williamsport; then following a straight line in a northwesterly direction to the confluence of a brook with the Cloud River at UTM coordinates 537214 metres east and 5626762 metres north; then following the southern bank of the Cloud River in an easterly direction to the point of commencement; excluding all offshore islands.

**MOOSE MANAGEMENT AREA 39
CLOUD RIVER**

All that area of the Island of Newfoundland bounded by a line beginning at a point on the Cloud River at UTM coordinates 548616 meters east and 5628482 meters north; then following a straight line in a generally northwesterly direction to the brook at the eastern extremity of Fox Pond at UTM coordinates 528946 meters east and 5644769 meters north; then following the northeastern shoreline of Fox Pond to a brook at the northeastern extremity of said pond; then following the northern bank of this tributary in a northwesterly direction to its confluence with Tilt Pond; then following the northern shoreline of Tilt Pond in a generally southwesterly direction to a brook at its northwestern extremity; then following the northern bank of said brook in a generally southwesterly direction to Papoose Pond; then following the northern shoreline of Papoose Pond in westerly direction to a brook at its northwestern extremity; then following the eastern bank of said brook in a generally northwesterly direction to George Coombs Steady; then following the southern shoreline George Coombs Steady in a generally westerly direction to its confluence with Middle Gulch Brook North Branch; then following the eastern shoreline of Middle Gulch Brook North Branch in a southwesterly direction to its confluence with Middle Gulch Brook; then following the eastern bank of the Middle Gulch Brook in a southwesterly direction to its confluence with the East Castor River; then following the eastern bank of East Castor River in a generally southerly direction to its confluence with Leg Pond; then following the northern shoreline of Leg Pond in an southeasterly direction to a southernmost point where a brook intersects with said pond; then following the eastern bank of the said unnamed brook at the southern extremity of Leg Pond in a southwesterly direction to Loon Pond; then following the eastern shoreline of Loon Pond to the mouth of a brook that flows into Bluey on Big East; then following the eastern bank of this brook to Bluey on Big East; then following the eastern shoreline of said pond to its southeastern extremity at UTM coordinates 512616 meters east and 5627601 meters north; then following a straight line in a southeasterly direction to Rocky Stint Pond on the headwaters of the Soufflets River, at UTM co-ordinates 518370 meters east and 5596857 meters north; then following a straight line in a generally easterly direction to the outflow of a brook at Northern Arm, Fourche Harbour; then following the coastline in an easterly direction to Williamsport, Fourche Harbour; then following a straight line in a northwesterly direction to the confluence of a brook and the Cloud River at UTM coordinates 537214 meters east and 5626762 meters north; then following the southern bank of the Cloud River in an easterly direction to the point of commencement; excluding all offshore islands.

Southeastern extremity of Bluey on Big East at UTM coordinates 512616 mE and 5627601 mN

Brook at the eastern extremity of Fox Pond at UTM coordinates 528946 mE and 5644769 mN

Confluence of a brook and Cloud River at UTM coordinates 537214 mE and 5626762 mN

Cloud River at UTM coordinates 548616 mE and 5628482 mN

Loon Pond

Confluence of Middle Gulch Brook with the East Castor River

Confluence of the East Castor River with Leg Pond

Southernmost point of Leg Pond

Papoose Pond

Confluence of Fox Pond and Tilt Pond

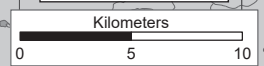
Rocky Stint Pond at UTM coordinates 518370 mE and 5596857 mN

Brook outflow at Northern Arm, Fourche Harbour

Outflow of a brook at Williamsport

Brook outflow into Torrent Cove

1:170,000



NAD1983 Zone 21N

Note: This map has been prepared as a convenient reference only. It is not a legal document. The Wildlife Act and Regulations and the Annual Hunting Orders published therein should be consulted for all purposes of interpreting and applying the law. Contact the Newfoundland & Labrador Wildlife Division.

Created by: Wildlife Division
Department of Fisheries, Forestry & Agriculture
Date: November 2020

PACK IT IN - PACK IT OUT
Garbage and litter on our landscape is becoming a serious problem. The best and only alternative for garbage is a Pack It In, Pack It Out policy. You carried in all those containers, boxes - packages when they were full; it's a lot easier to carry them out when they are empty. Please take your garbage home with you and dispose of it in the proper manner.

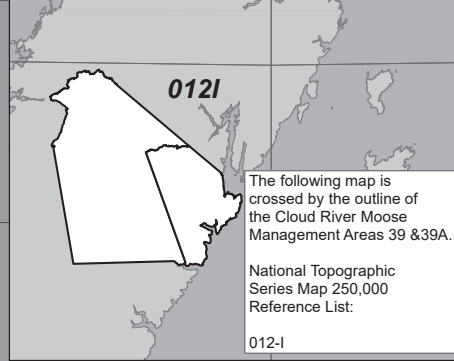
WILDLIFE DIVISION HEADQUARTERS
P.O. Box 2007, 192 Wheelers Road
Corner Brook, NL A2H 7S1
(709) 637-2025

Regional Wildlife Offices
Goose Bay, 896-7930
St. John's, 729-2630

Fish and Wildlife Enforcement
Report Poaching Toll Free 1-877-820-0999
Western Regional Office - 637-2971
Labrador Regional Office - 896-7973
Eastern Regional Office - 729-2192

REGIONAL FORESTRY OFFICES
Labrador, Goudie Building, P.O. Box 3014, Station B, Happy Valley, A0P 1E0, 896-2732
Western, Forestry Building, Massey Dr., P.O. Box 2006, Corner Brook, A2H 6J8, 637-2370
Eastern, Gander Public Building, Airport Blvd., P.O. Box 2222, Gander, A1V 2N9, 256-1450

**National Topographic Series
Reference Index 1:250000**

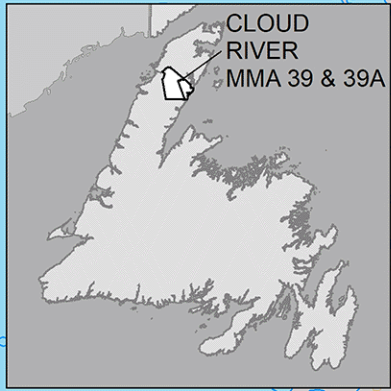


The following map is crossed by the outline of the Cloud River Moose Management Areas 39 & 39A.

National Topographic Series Map 250,000 Reference List:

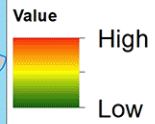
012-1

MMA 39 & 39A: Cloud River Moose Winter Distribution (Estimated): 2018 Survey

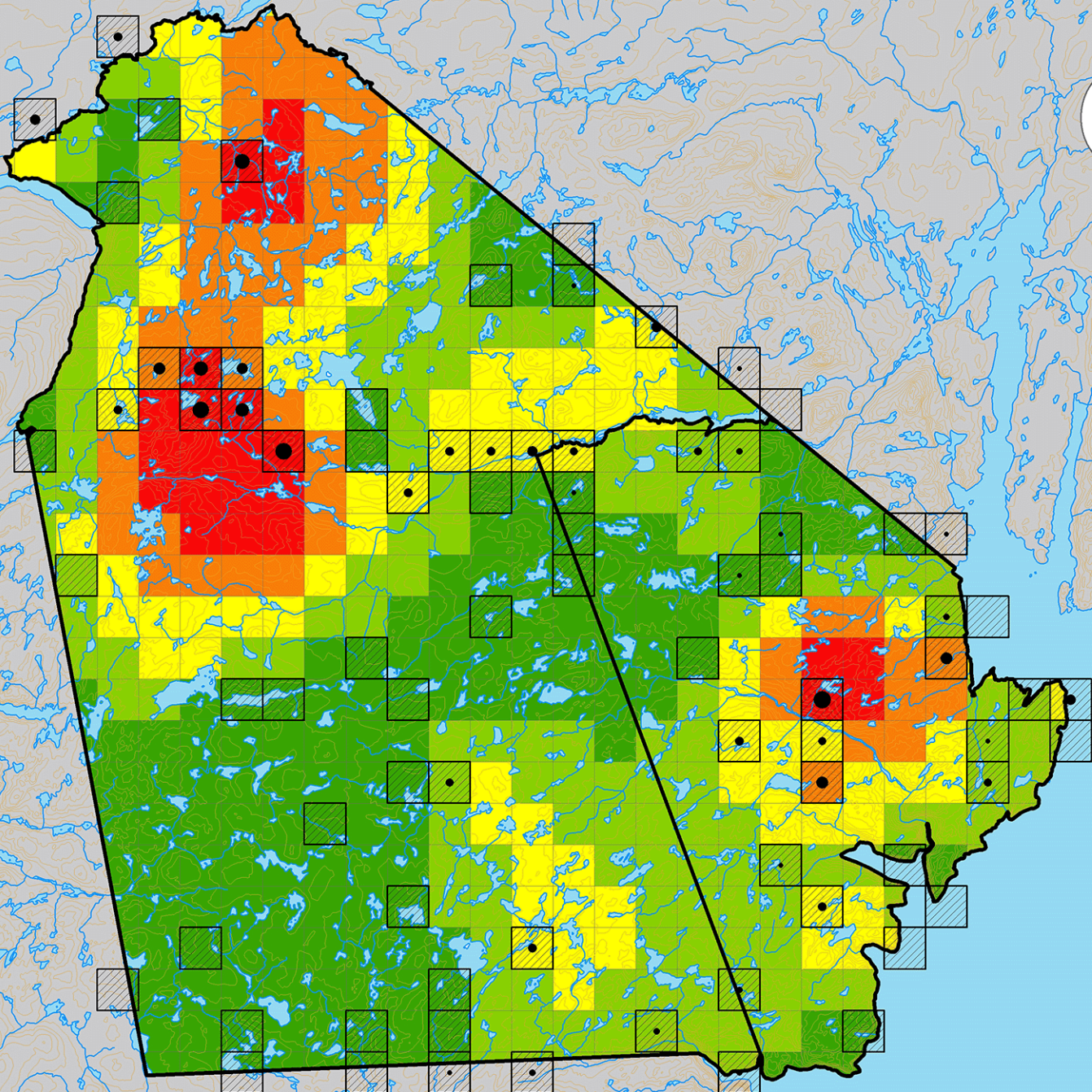
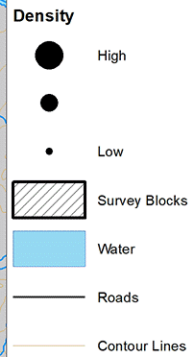


Legend

Moose Density (estimated)



Moose Density (measured)



Disclaimer:
This map is intended to illustrate where moose may exist in higher vs lower density, not as a definitive guide to moose occurrence. Data was collected between January and March of the survey year. Distribution during any other season may differ.

Created by: Wildlife Division
Department of Fisheries, Forestry & Agriculture
Date: July 2022

