

Conche Newfoundland Moose Management Area 40



CONCHE
MMA 40



Intersection of Belvie Brook system
with the forest access road at UTM
coordinates 546844 mE and 5666946 mN

Forest roads intersection
at UTM coordinates 546660
mE and 5665332 mN

Intersection of West Brook and
Belvie Brook at UTM coordinates
553645 mE and 5669953 mN

Intersection of the main access
road east of Muskrat Pond at
UTM coordinates 537411 mE
and 5662392 mN

Confluence of Muskrat
Brook with Round Lake

Intersection of road and
small stream flowing into
Muskrat Pond at UTM
coordinates 536681 mE
and 5661535 mN

Northern extremity
of Rose's Feeder

Brook at the southern
extremity of Feeder Pond

Northern extremity
of Castor Tilt Pond

Outflow of Castor
Tilt Pond into
East Castor Pond

Brook at the
northeastern
extremity
of Papoose Pond

Outflow of a brook
near Tilt Pond's
western extremity

Northeastern
extremity of Fox
Pond

1:180,000

Kilometers
0 5 10

NAD1983 Zone 21N

WILDLIFE DIVISION HEADQUARTERS
P.O. Box 2007, 192 Wheelers Road
Corner Brook, NL A2H 7S1
(709) 637-2025

Regional Wildlife Offices
Goose Bay, 896-7930
St. John's, 729-2630

Fish and Wildlife Enforcement
Report Poaching Toll Free 1-877-820-0999
Western Regional Office – 637-2971
Labrador Regional Office – 896-7973
Eastern Regional Office – 729-2192

Note: This map has been prepared as a convenient
reference only. It is not a legal document. The Wildlife
Act and Regulations and the Annual Hunting Orders
published therein should be consulted for all purposes
of interpreting and applying the law. Contact the
Newfoundland & Labrador Wildlife Division.

Created by: Wildlife Division
Department of Fisheries, Forestry & Agriculture
Date: November 2020

PACK IT IN - PACK IT OUT
Garbage and litter on our landscape is
becoming a serious problem. The best
and only alternative for garbage is a Pack
It In, Pack It Out policy. You carried in all
those containers, boxes - packages when
they were full; it's a lot easier to carry
them out when they are empty. Please
take your garbage home with you and
dispose of it in the proper manner.

REGIONAL FORESTRY OFFICES
Labrador, Goudie Building, P.O. Box 3014,
Station B, Happy Valley, A0P 1E0,
896-2732
Western, Forestry Building, Massey Dr., P.O.
Box 2006, Corner Brook, A2H 6J8,
637-2370
Eastern, Gander Public Building, Airport Blvd,
P.O. Box 2222, Gander, A1V 2N9,
256-1450

National Topographic Series
Reference Index 1:250000



The following maps are
crossed by the outline of the
Conche Moose
Management Area 40.

National Topographic
Series Map 250,000
Reference List:

002-L, 002-M, 012-I, 012-P

MOOSE MANAGEMENT AREA 40
CONCHE

All that area of the Island of Newfoundland beginning at
Cape Daumalen in Canada Bay; then following the
coastline in a northeasterly direction to Maiden Point,
Hare Bay; then following the coastline of Hare Bay in a
westerly direction to West Brook; then following a
straight line in a southwesterly direction to its
intersection with Belvie Brook at UTM coordinates
553645 meters east and 5669953 meters north; then
following the northern then western banks and
shorelines of the Belvie Brook system to its intersection
with the forest access road at UTM coordinates 546844
meters east and 5666946 meters north; then following
this forest access road to its intersection with the main
forest access road at UTM coordinates 546704 meters
east and 5665347 meters north; then following this
main access road in a westerly direction to an
intersection east of Muskrat Pond with UTM
coordinates 537411 meters east and 5662392 meters
north; then following this road to its intersection with a
small stream at UTM coordinates 536681 meters east
and 5661535 meters north; then following the southern
bank of said stream to Muskrat Pond and the southern
shoreline of said pond to Muskrat Brook; then following
the southern bank of Muskrat Brook to its confluence
with Round Lake; then following the southern and
western shorelines of Round Lake to the narrows
where it enters Ten Mile Lake; then following the
southern shoreline of Ten Mile Lake in a southwesterly
direction to the northern extremity of Rose's Feeder;
then following the eastern bank of Feeder Pond in a
southerly direction to Feeder Pond; then following the
eastern shoreline of Feeder Pond to the brook at its
southern extremity; then following a straight line in a
southwesterly direction to the northern extremity of
Castor Tilt Pond; then following the eastern shoreline of
Castor Tilt Pond in a southwesterly direction to a brook
at its southern extremity known as East Castor Brook;
then following East Castor Brook in a southerly
direction to East Castor Pond; then following the
eastern shoreline of East Castor Pond in a
southwesterly direction to the outflow at its
southwestern extremity; then following the southern
bank of said stream draining East Castor Pond to its
confluence with the brook draining Papoose Pond; then
following the eastern bank of this brook in a generally
southwesterly direction to Papoose Pond; then
following the northern shoreline of Papoose Pond in a
generally north easterly direction to a brook at its
northeastern extremity; then following the northern
bank of this brook in a generally northeasterly direction
to Tilt Pond; then following the northern bank of Tilt
Pond to the outflow of a brook near its western
extremity; then following the northeastern bank of this
brook and its associated waterways and ponds to the
northeastern extremity of Fox Pond; then following a
straight line in a southeasterly direction to the brook
outflow at Torrent Cove, Canada Bay; then following
the coastline of Chimney Bay and Canada Bay to the
point of commencement at Cape Daumalen; excluding
all offshore islands.

D

E

F

G

H

I

J

2

3

4

5

6

7

8

HARE BAY

West Brook

Maiden Point

Ten Mile
Lake

Round
Lake

Conche

Chimney Bay

Torrent
Cove

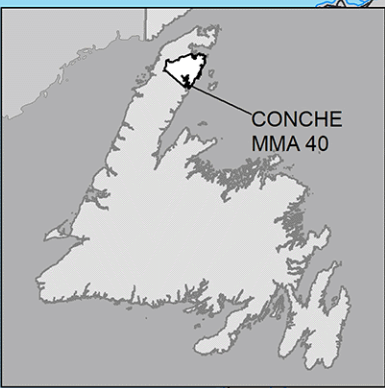
Brook outflow into
Torrent Cove

Canada
Bay

Cape Daumalen

MMA 40: Conche

Moose Winter Distribution (Estimated): 2019 Survey



Legend

Moose Density (estimated)

Value

High

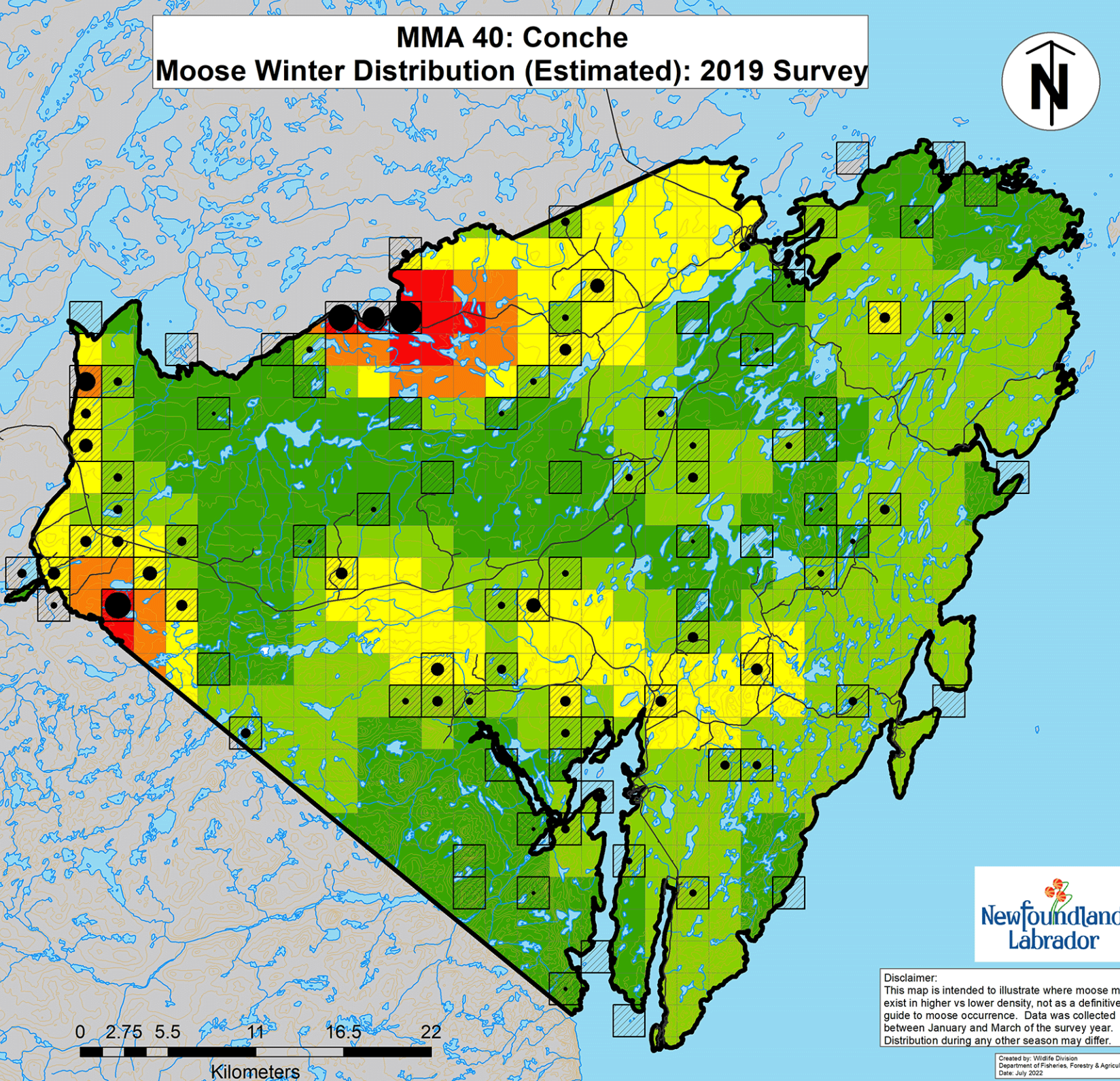
Low

Moose Density (measured)

Density

- High
- Low
- Low

- Survey Blocks
- Water
- Roads
- Contour Lines



**Newfoundland
Labrador**

Created by: Wildlife Division
Department of Fisheries, Forestry & Agriculture
Date: July 2022

Disclaimer:
This map is intended to illustrate where moose may exist in higher vs lower density, not as a definitive guide to moose occurrence. Data was collected between January and March of the survey year. Distribution during any other season may differ.