



Karem Azmy

Origin of hydrothermal dolomitization of St. George Group in western Newfoundland: implications for lateral distribution of porosity

K. Azmy



Karem Azmy

Post-doc fellows

Conliffe, J., 2010

Blamey, N., 2012

PhD Students

Olanipekum, B.J. (in progress)

Bakhit, A. (in progress)

MSc Students

Greene, M., 2008.

Schwartz, S., 2008.

Azomani, E., 2012.



Karem Azmy

Publications

8 published (SG, CBPG, CJES, Geofluids)

2 reports

1 in review (MPG)

3 in reparation (SG, GSA)



Karem Azmy

Publications (* = student or post-doc fellow)

* Azomani, E., Azmy, K., Blemey, N., Brand, U., Al-Aasm, I., Origin of Lower Ordovician dolomites in eastern Laurentia: Controls on porosity and implications from geochemistry. *Marine and Petroleum Geology* (*in review*)

*Conliffe, J., **Azmy, K.**, Greene, M., 2012. Hydrothermal Dolomites in the Lower Ordovician Catoche Formation. *Marine and Petroleum geology* 30: 161-173.

Azmy, K., *Conliffe, J., 2010. Dolomitization of the lower St. George Group on the Northern Peninsula in western Newfoundland: implications for lateral distribution of porosity. *Bulletin of Canadian Petroleum Geology* 58(4):1-14.



Karem Azmy

Publications (cont.)

*Conliffe, J., **Azmy, K.**, Gleeson, S.A., Lavoie, D., 2010. Fluids associated with hydrothermal dolomitization in St. George Group, western Newfoundland, Canada. **Geofluids** 9:1-16.

Azmy, K., Stouge, S., Christiansen, J.L., Harper, D.A.T., Knight, I., Boyce, D., 2010. Carbon-isotope stratigraphy of the Lower Ordovician succession in Northeast Greenland: implications for correlations with St. George Group in western Newfoundland (Canada) and beyond. **Sedimentary Geology**, 225: 67-81.

Azmy, K., Lavoie, D. 2009. High-resolution isotope stratigraphy of the Lower Ordovician St. George Group of western Newfoundland, Canada: implications for global correlation. **Canadian Journal of Earth Sciences**, 46: 1-21.



Karem Azmy

Publications (cont.)

Azmy, K., Knight, I., Lavoie, D., Chi, G., 2009. Origin of the Boat Harbour dolomites of St. George Group in western Newfoundland, Canada: implications for porosity controls. **Bulletin of Canadian Petroleum Geology**, 57: 1-24.

Conliffe, J., **Azmy, K.**, Knight, I., Lavoie, D., 2009. Dolomitization in the Lower Ordovician Watts Bight Formation of the St Georges Group, Western Newfoundland. **Canadian Journal of Earth Sciences**, 46: 247-261.



Karem Azmy

Publications (cont.)

Azmy, K., Lavoie, D., Knight, I., Chi, G., 2008. Dolomitization of the Aguathuna Carbonates in Western Newfoundland, Canada: Implications for a Potential Hydrocarbon Reservoir. **Canadian Journal of Earth Sciences**, 45 (7): 795-813.

Knight, I., **Azmy, K.**, Boyce, D., Lavoie, D., 2008. Tremadocian carbonates of the lower St. George Group, Port au Port Peninsula, western Newfoundland: Lithostratigraphic setting of diagenetic, isotopic, and geochemistry studies. Current Research Newfoundland and Labrador Department of Natural Resources **Geological Survey. Report 08-1: 1-43.**



Karem Azmy

Publications (cont.)

Knight, I., **Azmy, K.**, *Greene, M., and Lavoie, D. 2007.
Lithostratigraphic setting of diagenetic, isotopic, and geochemistry studies of Ibexian and Whiterockian carbonates of the St. George and Table Head groups in western Newfoundland. Current Research Newfoundland and Labrador Department of Natural Resources **Geological Survey. Report 07-1: 55-84.**



Karem Azmy

Publications (cont.)

to be submitted

Azmy, K., Blamey, N., Constraints on fluid origins during carbonate diagenesis from fluid inclusion gas analysis. GSA.

* Olanipekun, B.J., Azmy, K., Brand, U., Dolomitization of the Boat Harbour Formation: implications for diagenetic history and porosity control. Sedimentary Geology.



Karem Azmy

Multi-technique approach:

Petrography

Cathodoluminescence

UV- λ luminescence

Microthermometry (T_h , salinity estimates)

Gas analysis of flinccs

Leach analysis of flinccs

C δ & O δ isotopes

Major and minor elements

Rare earth elements (REE)



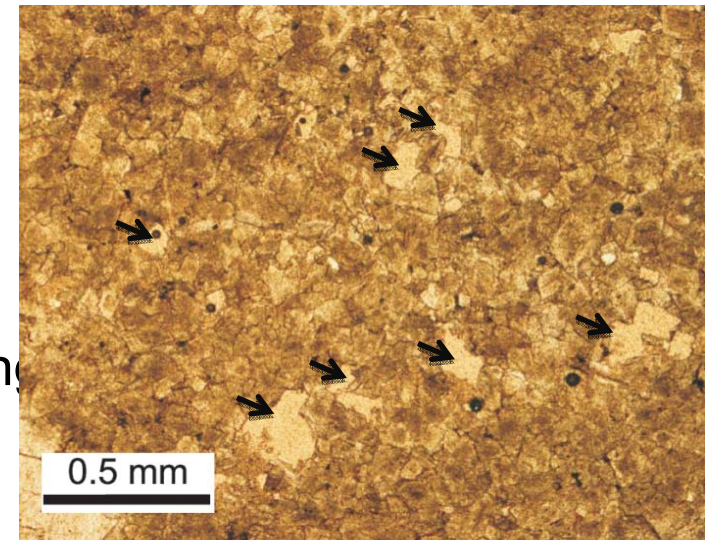
Karem Azmy

Description: The study of origin and distribution of hydrothermal dolomites and their control on porosity development in carbonates.

Objectives:

Investigate the diagenetic evolution & reservoir characterization of the carbonates.

- study (petrographically & geochemically) the dolomitization phases
- investigate the origin & nature of the dolomitizing fluids to understand the controls on porosity development & distribution.





Port au Choix

12P/1-12

12i/6-121

12B/11-44

RND1

Isthmus Bay

Island of Newfoundland

Saint Pierre and Miquelon

St Pierre

St. John's



© 2010 Europa Technologies
Image © 2010 TerraMetrics
Data SIO, NOAA, U.S. Navy, NGA, GEBCO
© 2010 Tele Atlas

©2009 Google

48°38'54.88" N 55°18'37.39" W elev 438 ft

Eye alt 385.40 mi



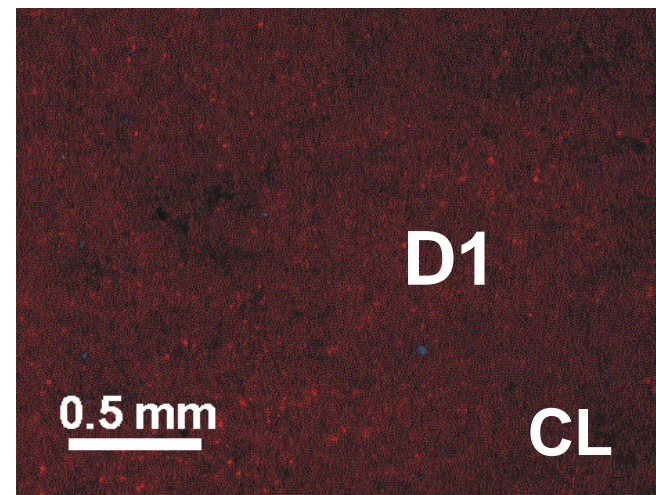
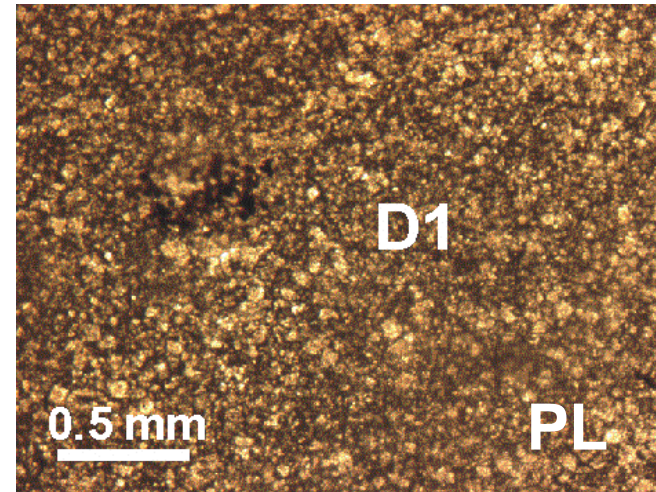
Karem Azmy

Results / Achievements

Petrography

3 major dolomitization phases:

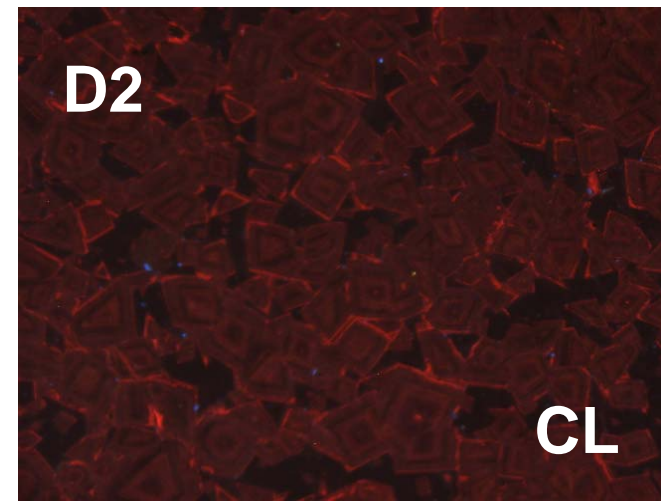
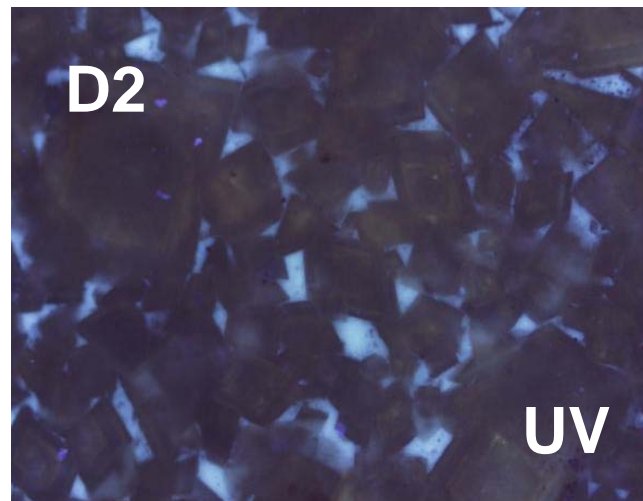
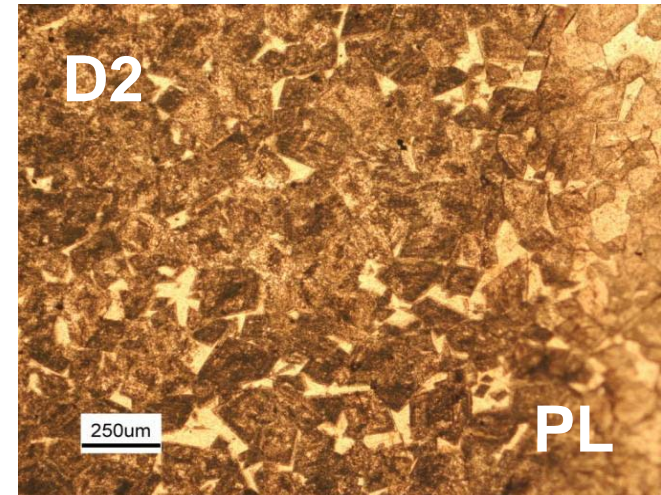
(D1) Pervasive fabric retentive dolomicrite (4 to 40 μm)





Karem Azmy

(D2) mid-burial hydrothermal
sub- to euhedral crystals (50 □
250 μm) with high
intercrystalline porosity (up to
10% in some horizons).

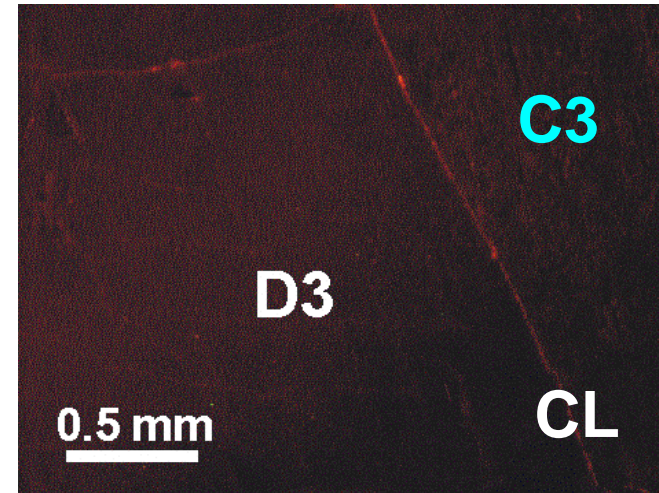
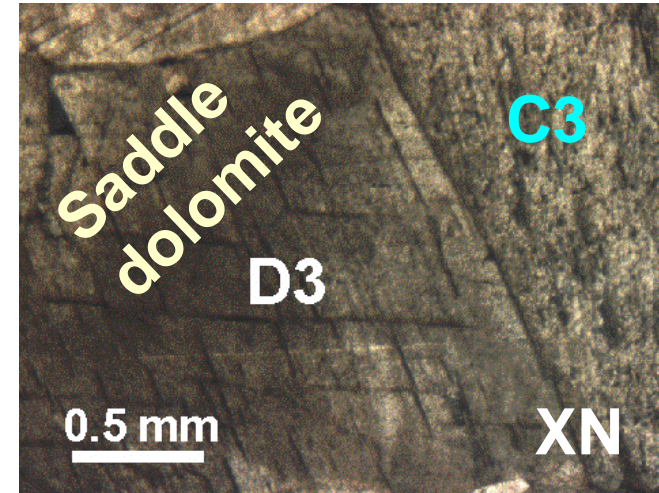




Karem Azmy

(D3) deep-burial hydrothermal fracture-filling
sub- to anhedral crystals
(up to 0.5 cm)
milky appearance
undulose extinction

(C3) latest fracture-filling calcite





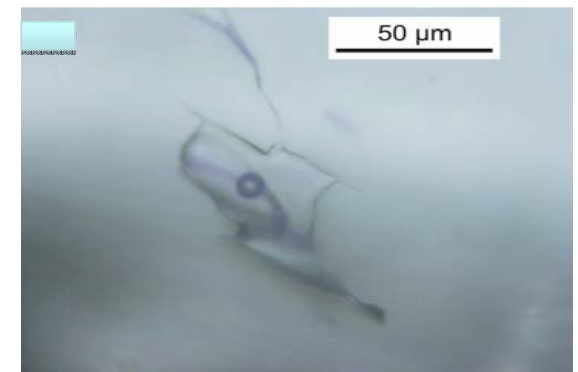
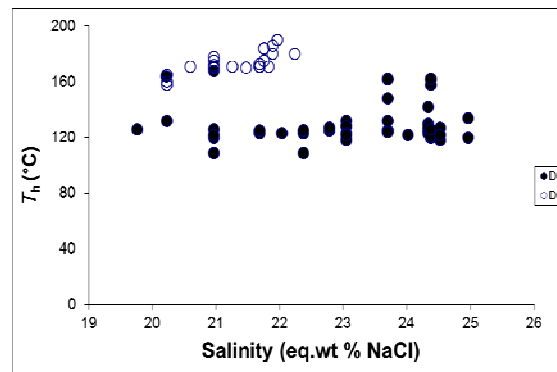
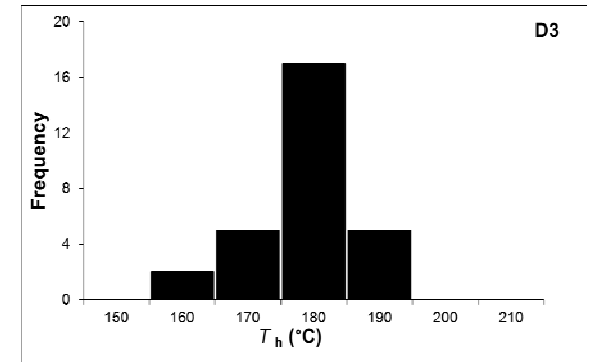
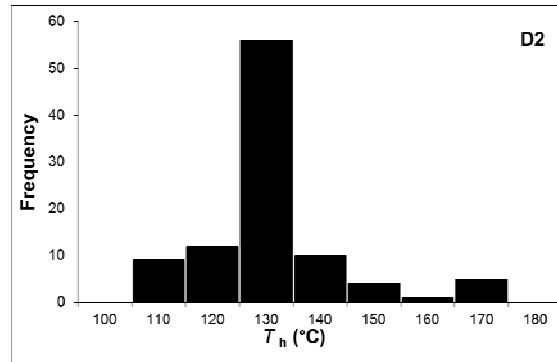
Karem Azmy

Microthermometry

2 phases of hot dolomitizing fluids (D2 & D3)

T_h at up to 130°C & 180°C, respectively.

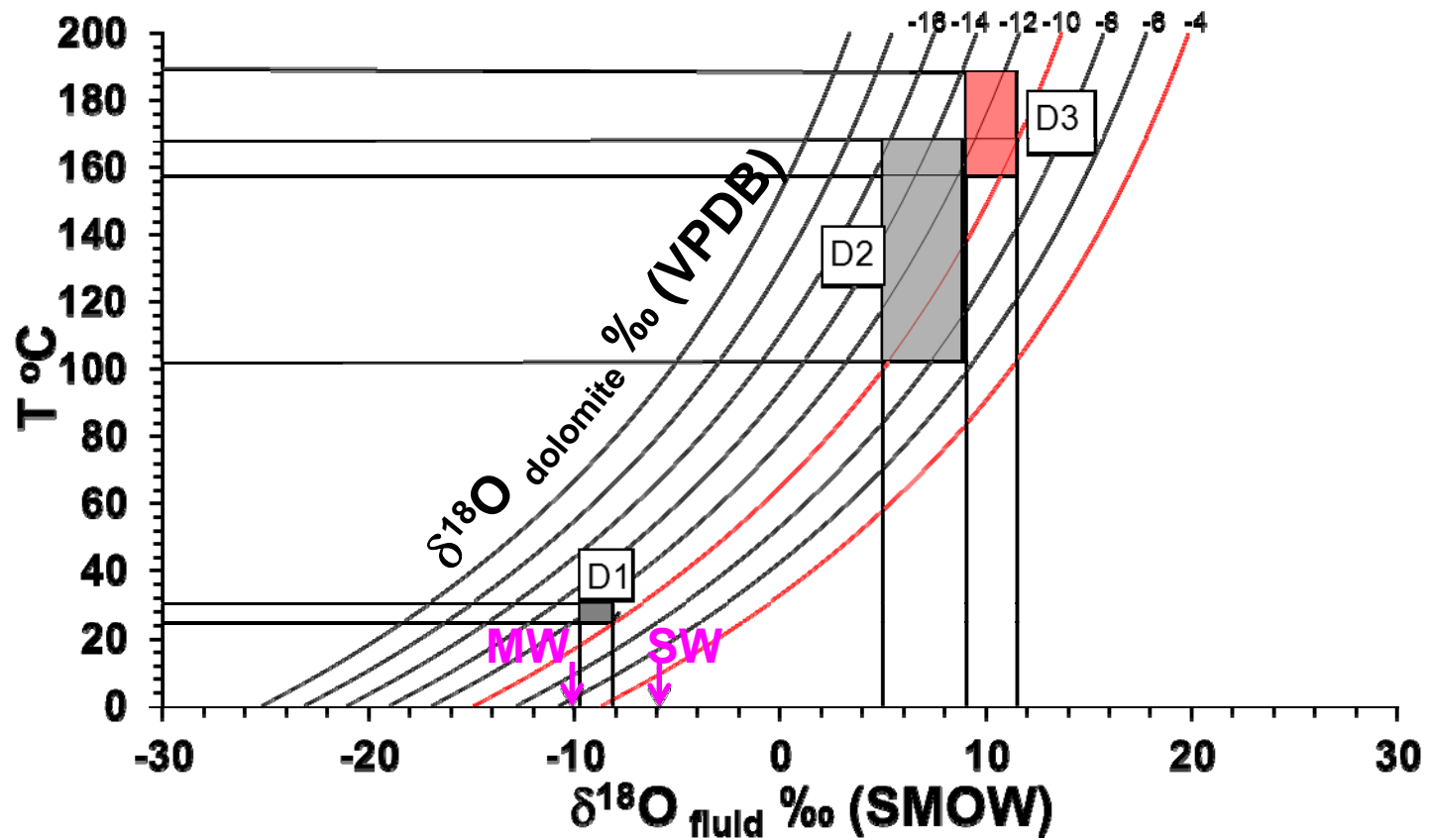
Salinity estimates 22 to 25 eq wt% NaCl

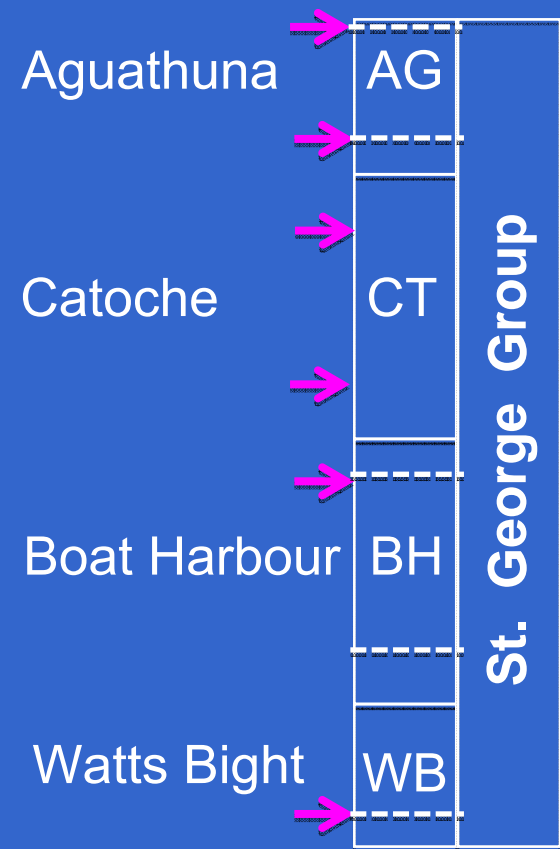
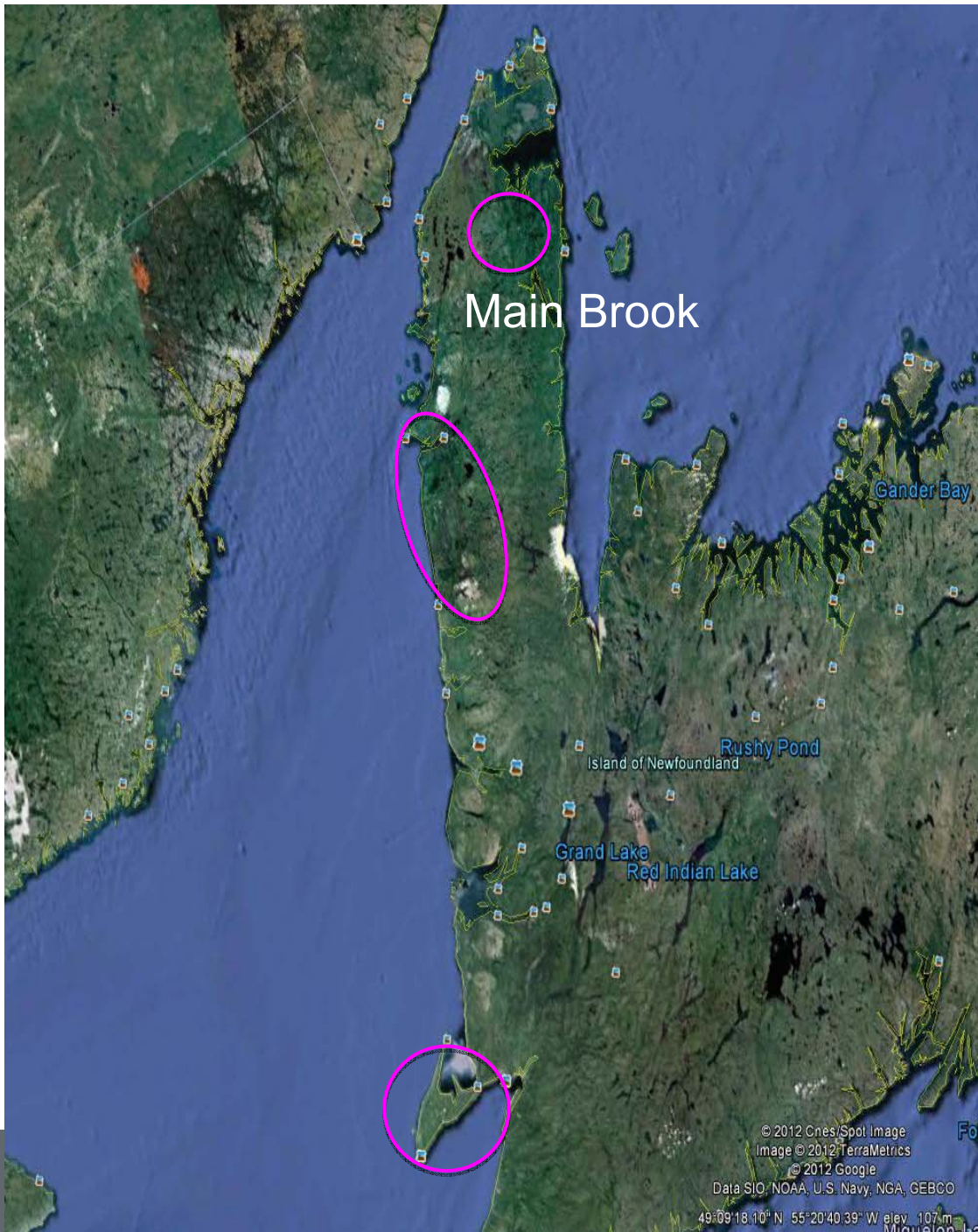




Karem Azmy

Stable isotopes





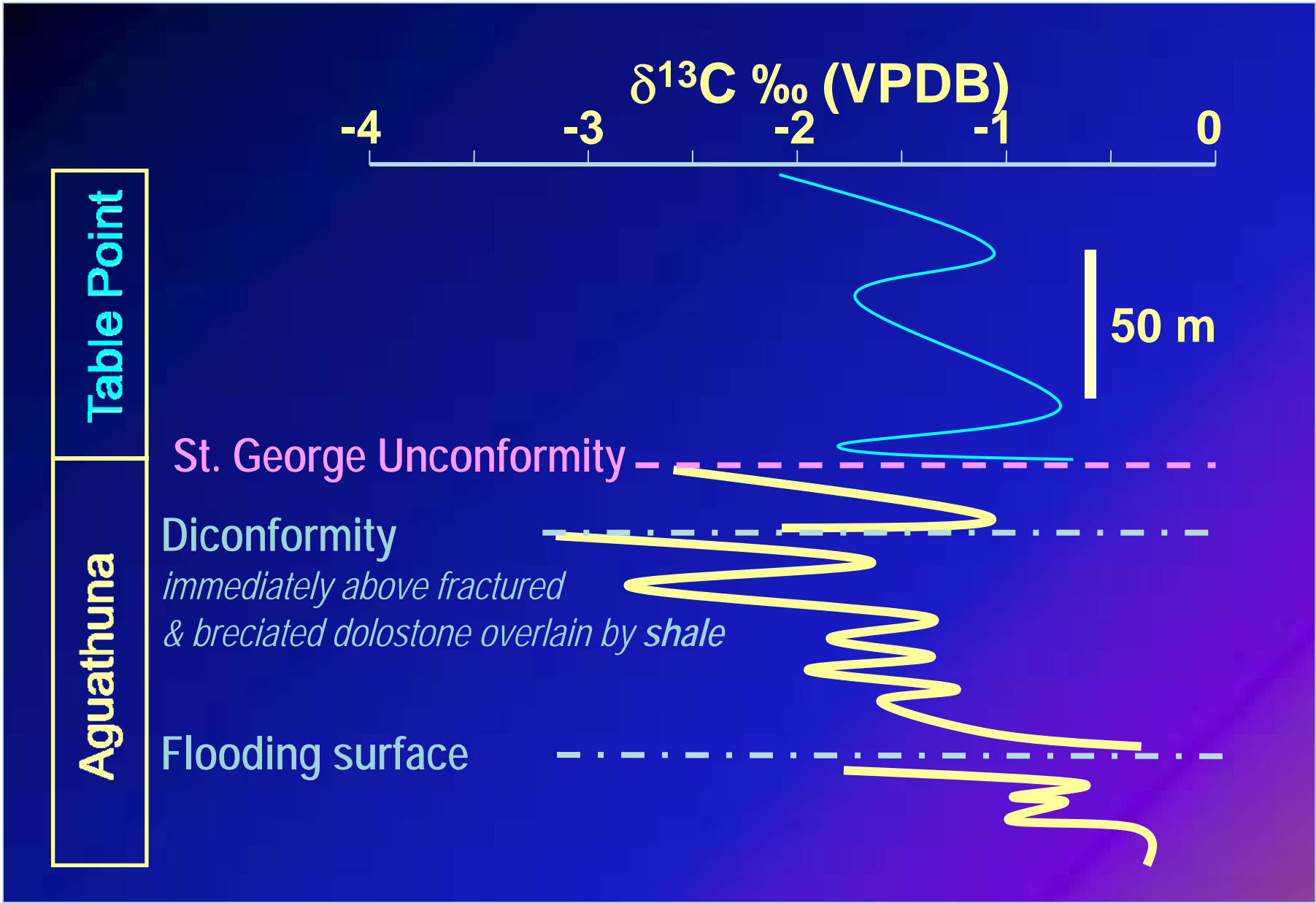
Un-/ disconformity -----

$\delta^{13}\text{C}\text{‰}$ (PDB)

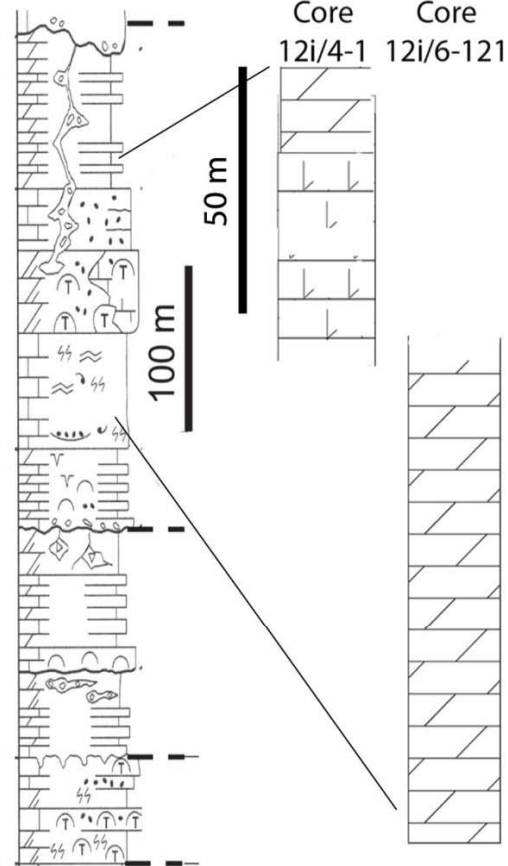
$R^2 < 0.1$

lime mudstone C1
dolomicrite D1

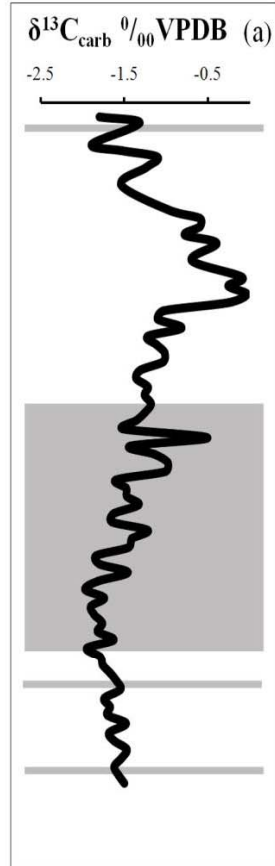
Mn/Sr



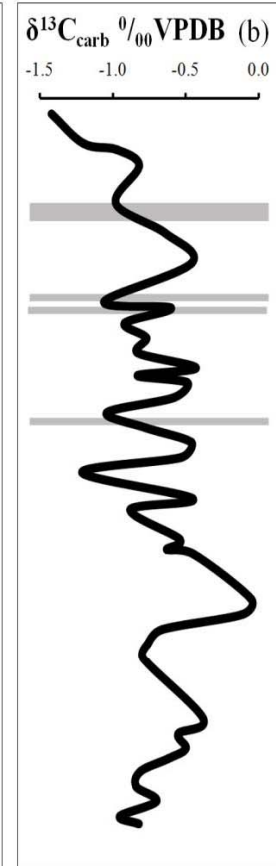
CAMBRIAN	ORDOVICIAN	
	LOWER	MIDDLE
PORT AU PORT GROUP	TREMADOC	IBEXIAN WHITEROCK
	ARENIG	LLANVIRN
	ST. GEORGE GROUP	TABLE HEAD GROUP
Watts Bight	Boat Harbour	Aguathuna
	Catoche	



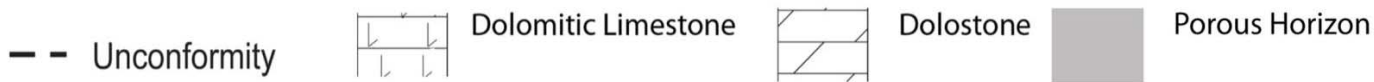
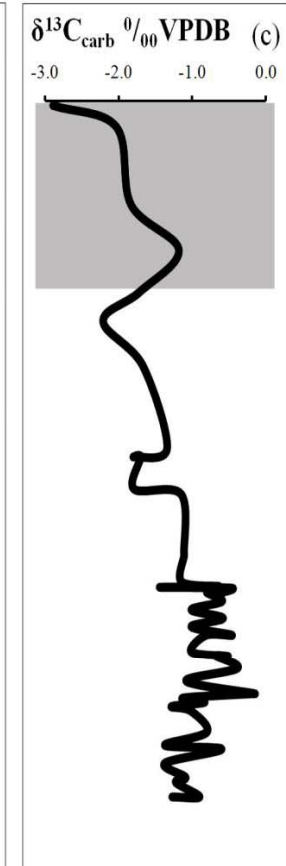
Daniel's Harbour

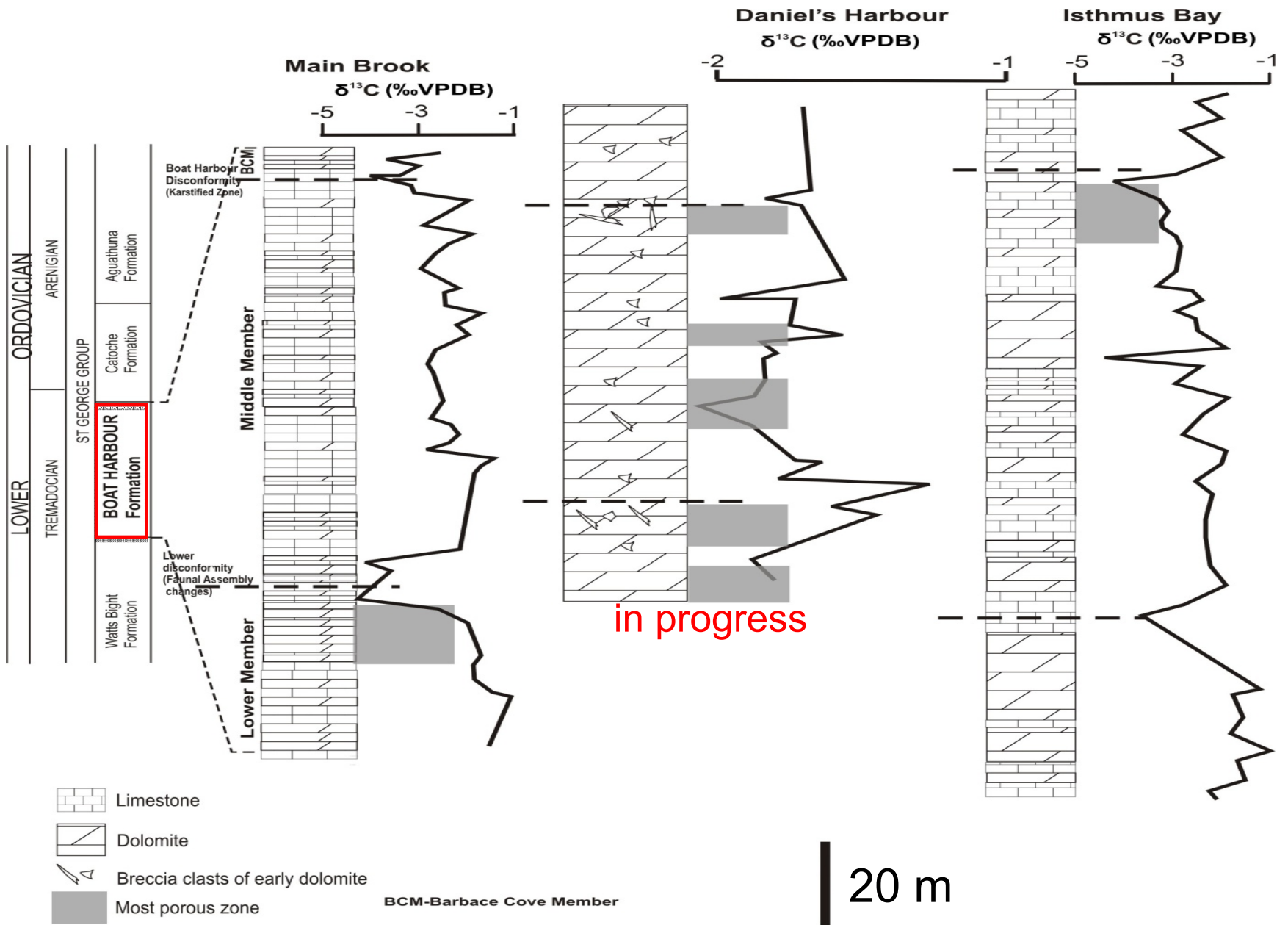


Port au Port Peninsula



Port au Choix Peninsula



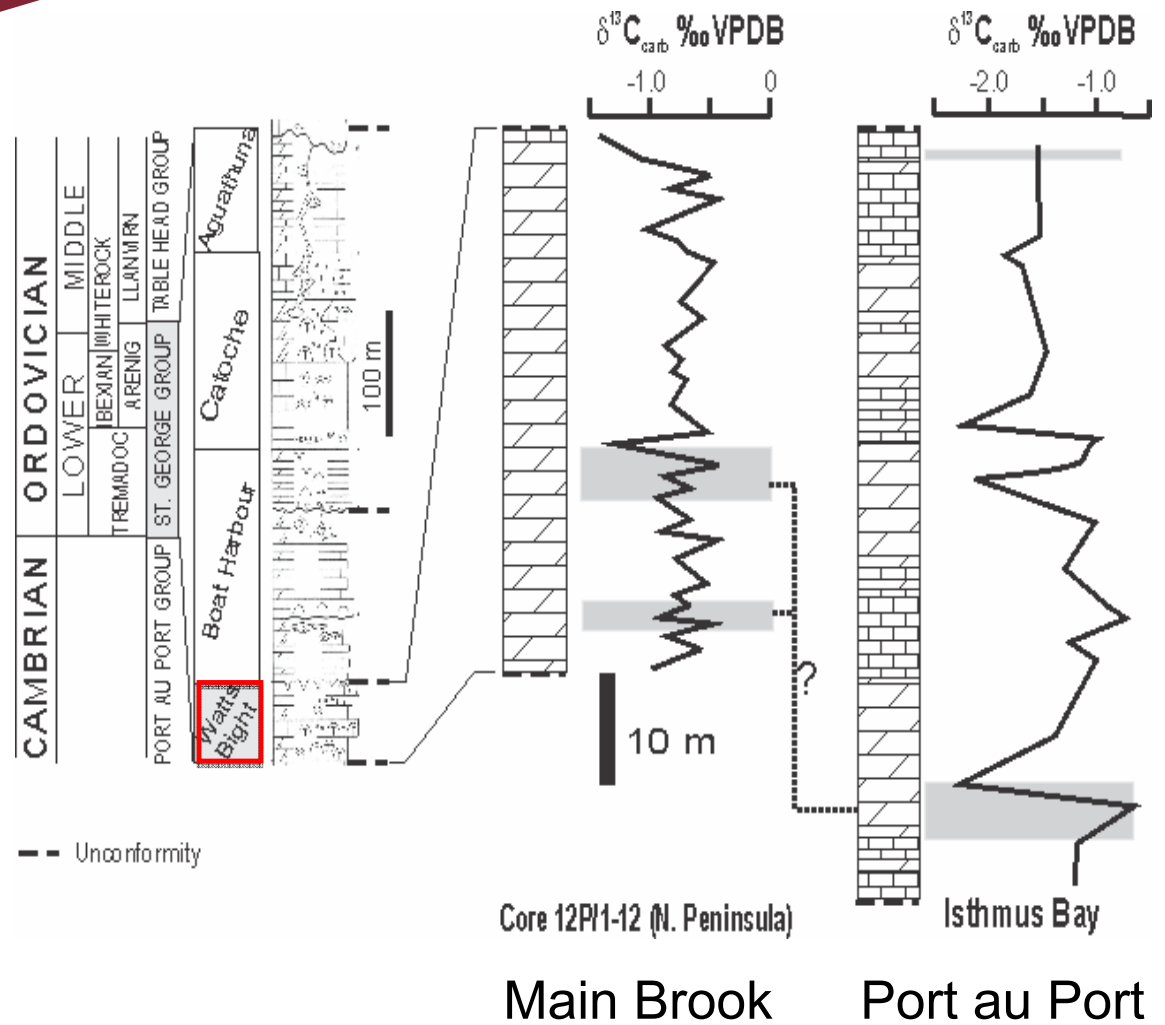




Karem Azmy

C-isotope profile unconformity vs. porosity

Correlation of sequences across western Newfoundland





Karem Azmy

Why is intercrystalline porosity in D2 at times associated with –ve $\delta^{13}\text{C}$ shifts (un-/disconformity)?

drop of sealevel brings oxygenated water in contact with organic matter in the relatively lower shelf \Rightarrow oxidation and release of light $^{12}\text{CO}_2$

also, it allows meteoric water to dissolve marine carbonates and create a preliminary system of conduits that facilitates the circulation of the dolomitizing fluids, which enhances porosity by dolomitization.



Karem Azmy

Why is intercrystalline porosity in D2 not always associated with un-/disconformity?

Porous D2 horizons have usually higher mean $[Ca^{+2}]$, i.e., developed directly from calcite ($CaCO_3$ □ lime mudstone)

If D2 is formed by recrystallization of D1 (dolomiticrite) \Rightarrow no porosity (no molar volume change)

If dolomitization occurs simultaneously with dissolution of calcite \Rightarrow no porosity

If Mg^{+2} is limited (semi-closed / closed conditions) & dissolution continues after dolomitization stops \Rightarrow porosity.



Karem Azmy

Isotope Correlation

High-resolution
global correlations

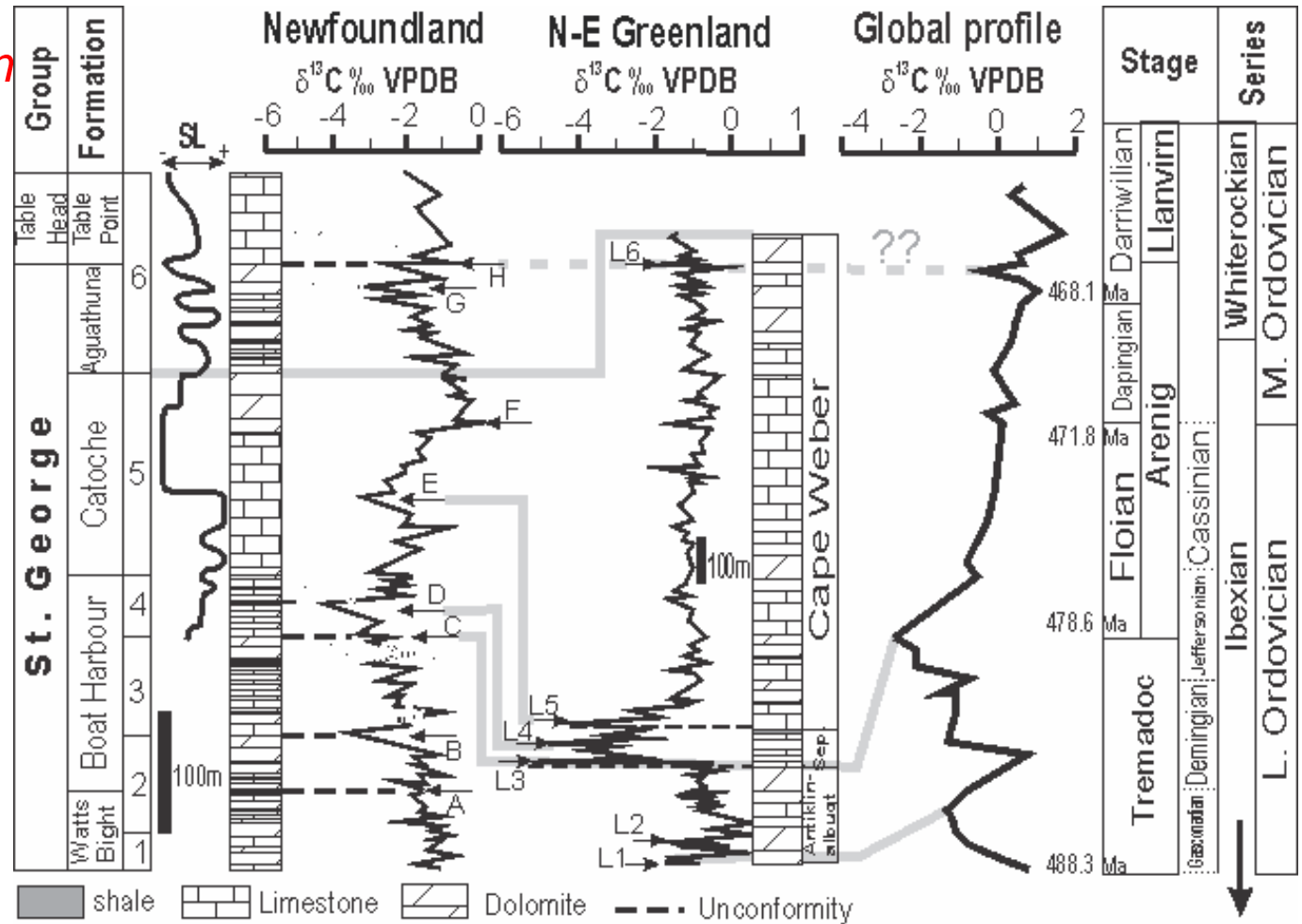
Western NL

vs

Greenland

Azmy et al 2010

Sed Geol.



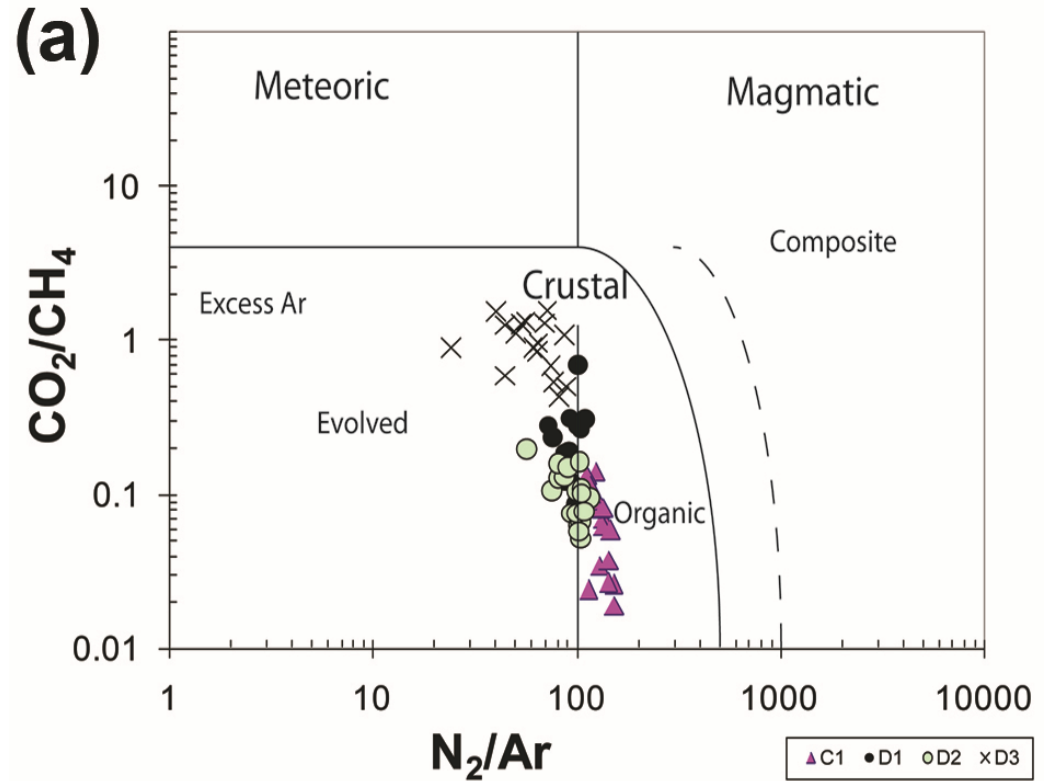


Karem Azmy

Fluid-inclusion gas ratios

Hydrothermal dolomitizing fluids.

No magmatic inputs.

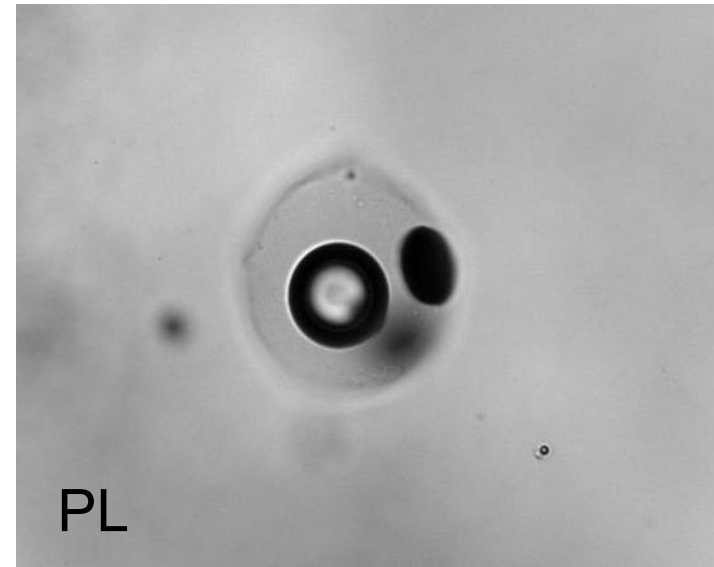




Karem Azmy

Gas ratios

Volatiles (CO_2 , N_2 , C_{1-5}) from gas fields provide information on whether gas was generated by “cooking” an oil play by igneous intrusion, or **gas in contact with an oil play not “cooked”**





Karem Azmy

Major, minor

dolomicrite, D1

$$m(\text{Sr/Ca})_{\text{dolomite}} = D_{\text{sr}} m(\text{Sr/Ca})_{\text{fluid}}$$

Comparison with $m(\text{Sr/Ca})_{\text{SW}} \Rightarrow$ sabkha vs. mixed water origin (diluted SW)

$$m(\text{Sr/Ca})_{\text{fluid}} > m(\text{Sr/Ca})_{\text{SW}} \Rightarrow \text{sabkha (Sr} \geq 550\text{ppm)}$$

$$m(\text{Sr/Ca})_{\text{fluid}} < m(\text{Sr/Ca})_{\text{SW}} \Rightarrow \text{mixed water origin (diluted SW) (Sr} \sim 150\text{ppm)}$$



Karem Azmy

REE

all trivalent (except for Ce^{+4} and Eu^{+2} in certain environments)

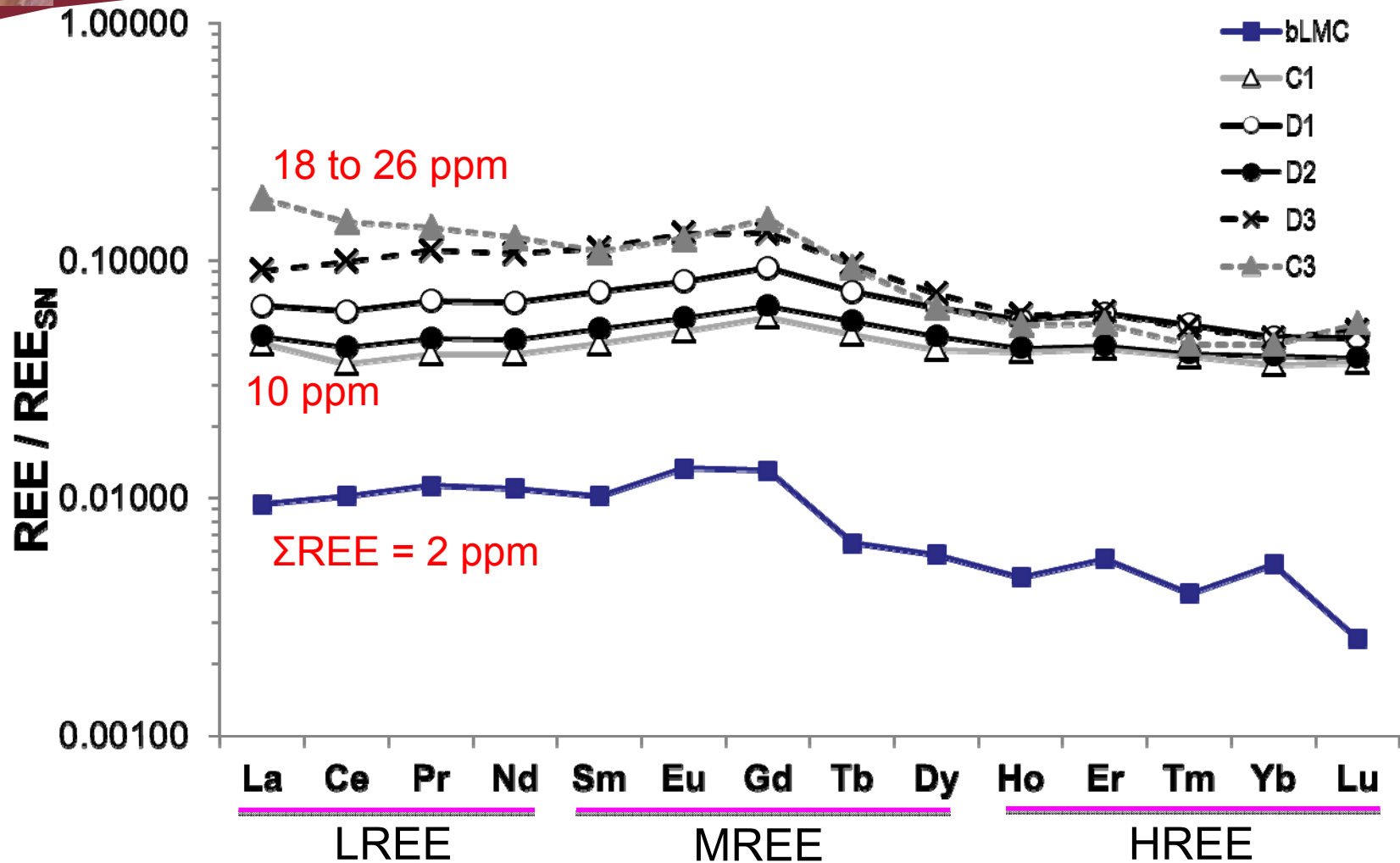
similar ionic radii □ chemical characteristics change systematically along the series.

narrow range of partition coefficient

i.e., variations reflect oceanic composition and/or nature of fluids that deposited the carbonates



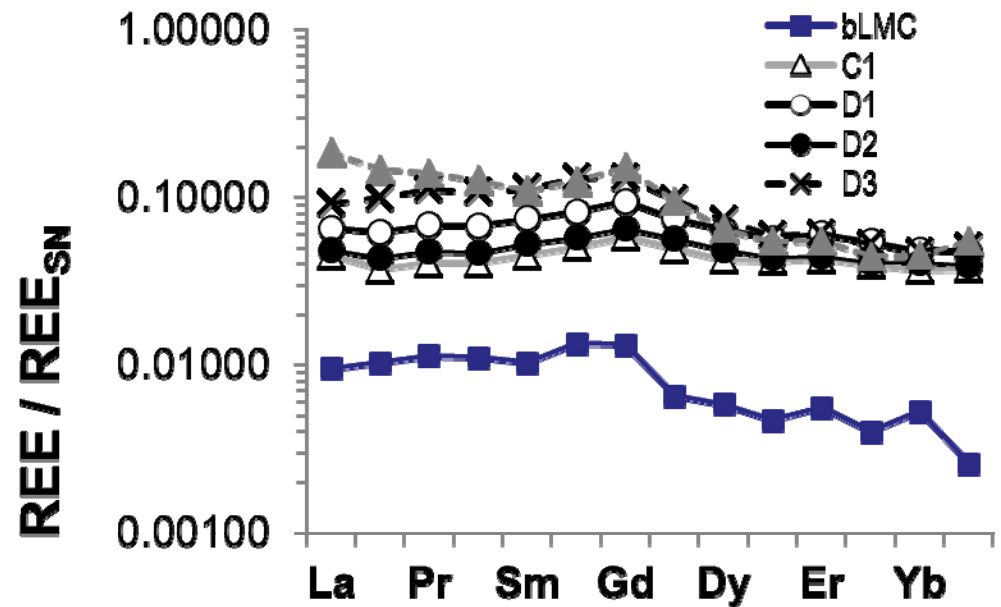
Karem Azmy





Karem Azmy

- lime mudstones (C1) & dolomicrites (D1) have:
- similar REE patterns
 - near□micritic grain size
 - similar mean $\delta^{13}\text{C}$ values
 - comparable mean $\sum\text{REE}$ values



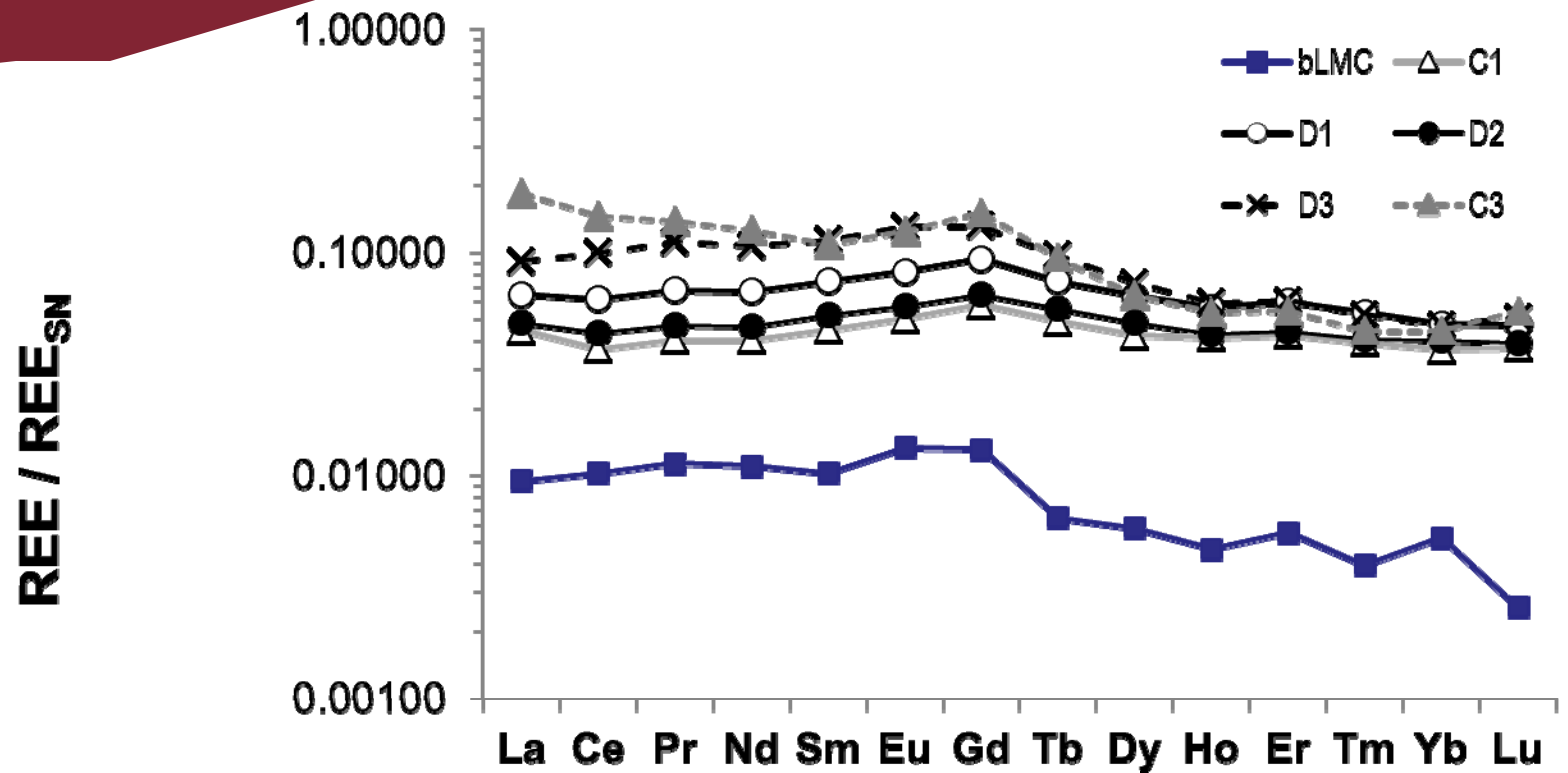
Thus,

C1 is the precursor of **D1** that originated from dolomitizing fluids formed from mixture of marine and meteoric water.

D1 is not syngenetic (sabkha) as has been believed



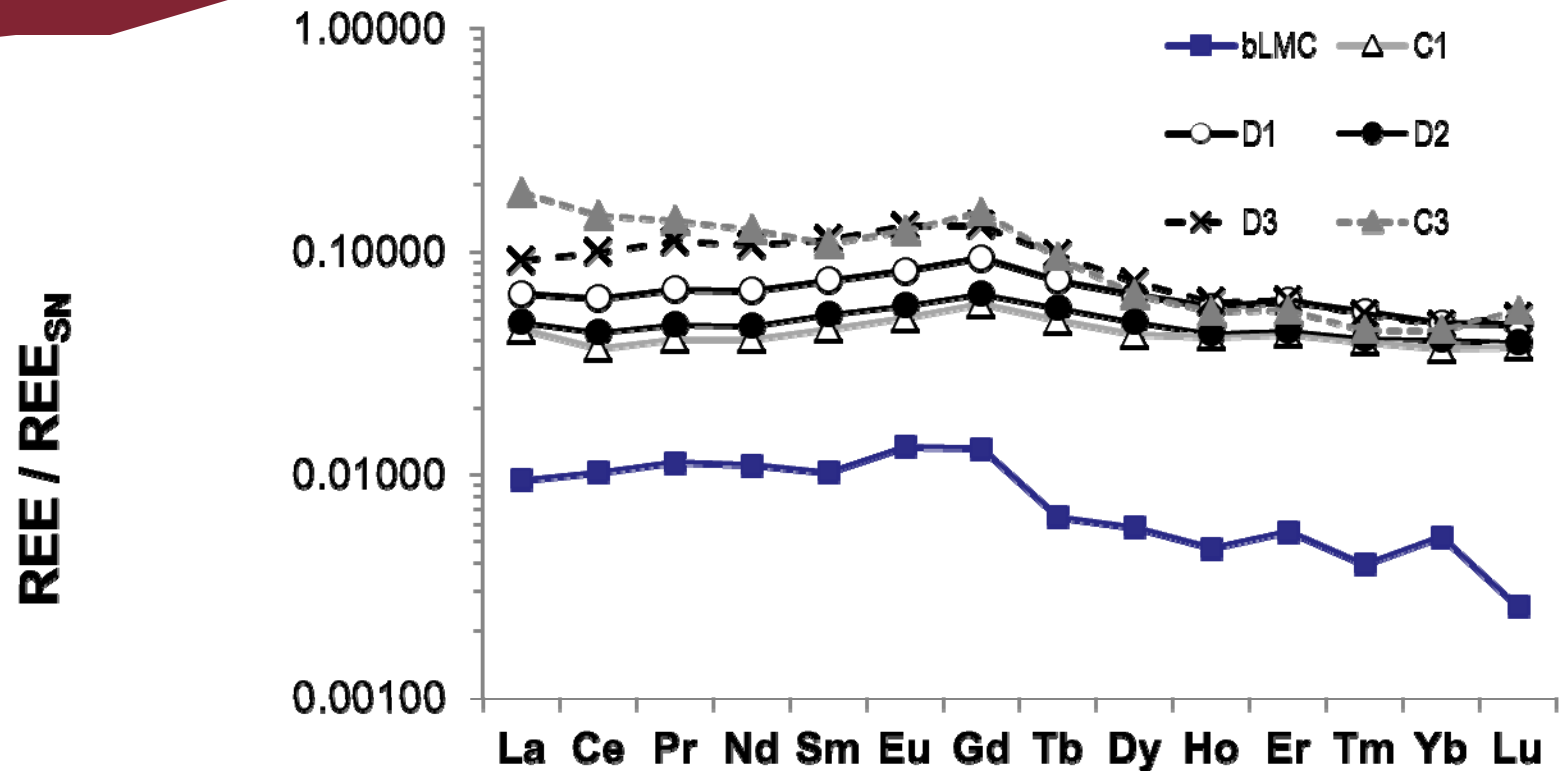
Karem Azmy



C1 REE_{SN} pattern between those of bLMC & D1 supports the scenario that D1 is an early stage (near-surface) dolomitization.



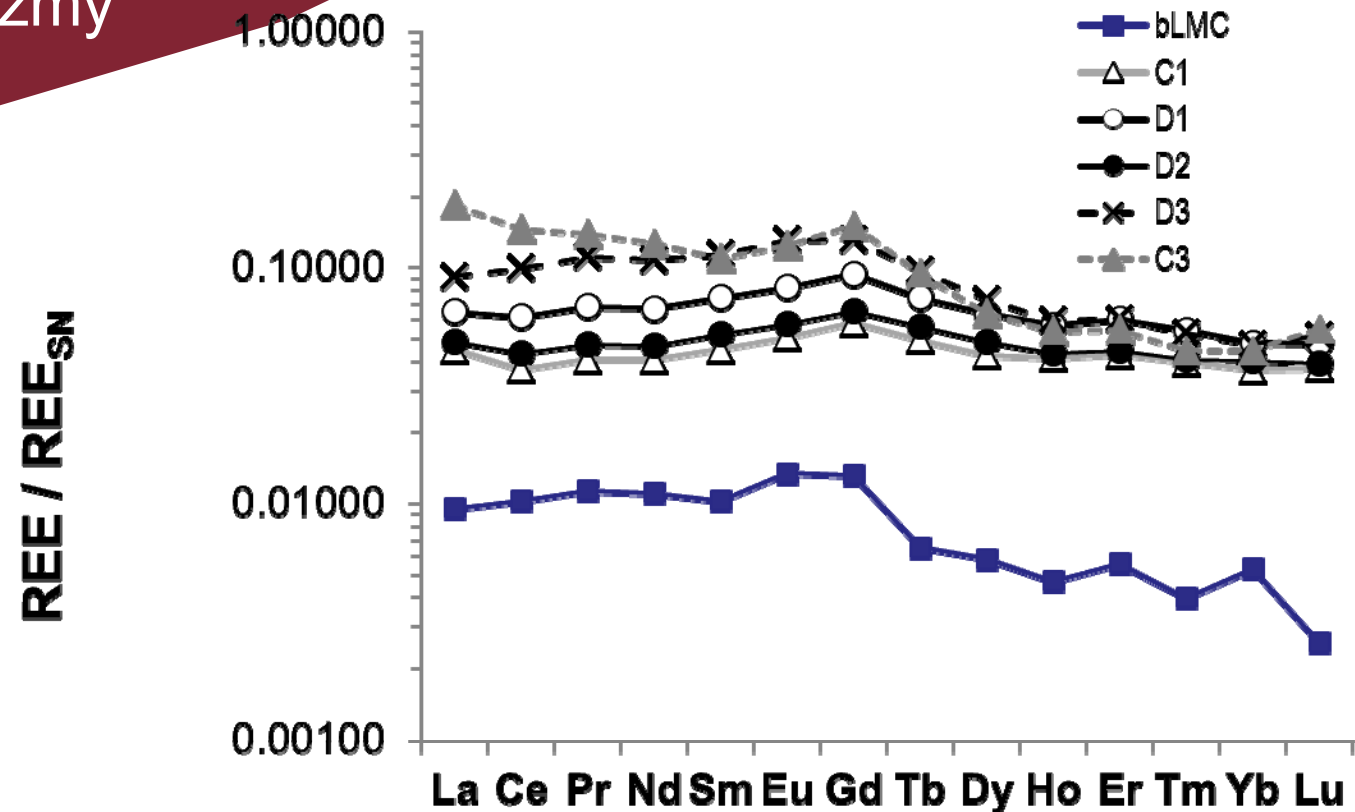
Karem Azmy



All dolomite phases (D1, D2 & D3) are parallel and almost superimposed around the HREE section, suggesting an origin from similar or same fluids that were circulated in the crust during burial history.



Karem Azmy



Σ REE of **D3** and **C3** are relatively higher than the other dolomites because they precipitated at the latest stages of burial as fracture filling but not replacive.



Karem Azmy

Proposed Work

➤ Study of other porous dolomites from different independent systems (different age and location) for comparison with St. George Group dolomites.

This will provide better understanding of controls on patterns of porosity distribution in hydrothermal dolomites

➤ Study of geochemistry (REE) of carbonates from modern extreme environments and ancient chemosynthetic (hydrocarbon seeps) settings.



Karem Azmy

Conclusions

- ❖ Intercrystalline porosity is:
 - associated with hydrothermal dolomites of mid burial settings
 - in horizons likely associated with unconformities / disconformities

- ❖ Dolomitization was by basinal fluids that were circulated in the crust under semi-closed to closed system conditions.

- ❖ No contribution from magmatic fluids.



Karem Azmy

Impact:

- ❖ Better understanding porosity distribution in onshore sequence:
 - allows predicting/modeling porosity patterns in their equivalent offshore counterparts.
 - will have important implications for hydrocarbon exploration.

- ❖ The approach can be applied to any carbonate rocks regardless age or location.



Karem Azmy

Thank you