

GEOLOGY OF THE AVALON PENINSULA, NEWFOUNDLAND
(parts of 1K, 1L, 1M, 1N and 2C)

Map 88-01
(Digital reproduction)
Geology compiled by A. F. King
Map series edited by S. P. Colman-Sadd and J. P. Hayes

ACKNOWLEDGEMENTS

Previously unpublished mapping by A.F. King benefited greatly during its early stages from the guidance of W.D. Buckner (Concept Group), V.S. Pageau (Harbour Main Group) and T. Fischer (Canadian Geology, Cape St. Mary's peninsula). Special thanks are extended to M.M. Anderson, T. Cabot, B. Coe, J. Hayes, S.J. O'Brien, C.F. O'Driscoll, G. Parsons, R.K. Stevens and H. Williams for comments made in the field and for informal discussions. Capable field assistance was provided by J. H. T. Bruce and D. Andrews.

H. Miller and J. Tod are thanked for the interpretation of geophysical data, and C.F. O'Driscoll for the comparison of the mineral occurrence.

The offshore geological data were provided by the Atlantic Geoscience Centre, Geological Survey of Canada, and have been published previously in a less detailed form in King et al. 1996. Special thanks are extended to G.B.J. Fisher for his assistance in compiling the data for this map.

Funding for part of this project was provided by the Canadian Council on Social Sciences, Council of Canada, under Grant A-7022-92.

The basic map was assembled by the Geological Survey of Canada from maps published in the same series by the Survey and Mapping Branch, Department of Energy, Mines and Resources in 1970, 1971.

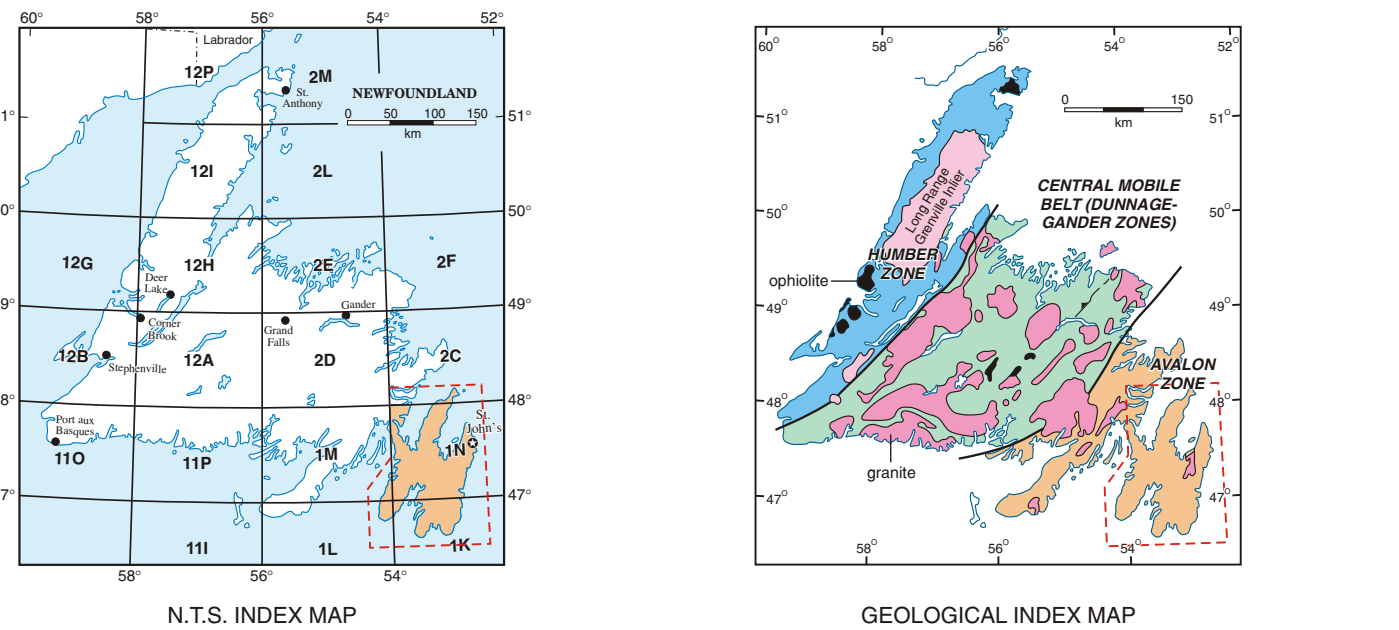
The bathymetric contours were provided by the Canadian Hydrographic Service from the Natural Resources Map series and from unpublished maps.

Copies of this map may be obtained from the Geoscience Publications and Information Section, Geological Survey, Department of Mines and Energy, P.O. Box 9706, St. John's, Newfoundland, Canada, A1B 4X6.
http://www.geoscan.govt.ca

Geological cartography by Tony Patrykavage.

SYMBOLS

GENERAL	MINERAL OCCURRENCES		
Geological contact (defined, approximate, assumed, gradational)	Status	Commodity	
Fault (defined, approximate, assumed, thrust)	Produced	Au Gold	
Bedding tops known (inclined, overturned, horizontal)	Developed prospect	Ba Barite	
Bedding tops unknown (vertical)	Past produced (dominant)	Clay Clay	
Cleavage (inclined, vertical)	Past produced (exhausted)	Cu Copper	
Axis of minor fold (plunging)	Prospect	Fe Iron	
Fold axis (anticline, syncline, with direction of plunge)	Showing	Fluor Fluorite	
Unconformity (shown on legend and stratigraphic section only)	Indication	Lt Limestone	
Fossil locality		Mn Manganese	
Problematical fossil marking		Pb Lead	
		Pyr Pyrite	
		Pgh Pyrophyllite	
		Py Pyrite	
		Sls Silica	
		Stn Sulfur-bearing stone	
			Detailed mineral occurrence data are published separately on Map 88-02 (O'Driscoll and King, 1995)



Map scales 1:250 000 and 1:253 440
Map scales 1:500 000 and 1:63 300
Map scales 1:25 000
Other scales

Mapping and substantial revision of existing maps by A. F. King
Aeromagnetic anomaly, covered by unit T₂, interpreted from maps published by the Geological Survey of Canada (1971, 10).
Orthogeology from King et al. (1986), and G. J. J. Fisher and P. W. Dunning (unpublished, 1986).
Mineral occurrences compiled by C. F. O'Driscoll

REFERENCES

Anderson, M.M., Royce, W.D., King, A.F. and Miller, J.B. 1979. The Avalon geotectonic belt, Newfoundland. *Geological Survey of Canada, Paper 79-10*, 100 pp.

Cooper, A.F. 1989. Geology of the Avalon Peninsula, Newfoundland. *Geological Survey of Canada, Paper 89-10*, 100 pp.

O'Brien, S.J., Coe, B., O'Brien, C.F., O'Driscoll, C.F., Parsons, R.K., Stevens, R.K., and Williams, H. 1990. Geology of the Avalon Peninsula, Newfoundland. *Geological Survey of Canada, Paper 90-10*, 100 pp.

O'Driscoll, C.F. 1995. Geology of the Avalon Peninsula, Newfoundland. *Geological Survey of Canada, Paper 95-10*, 100 pp.

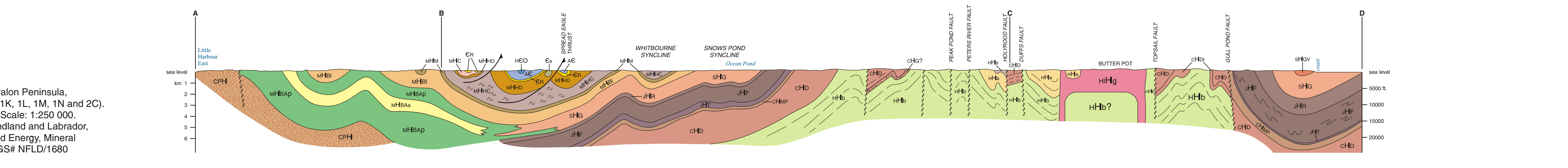
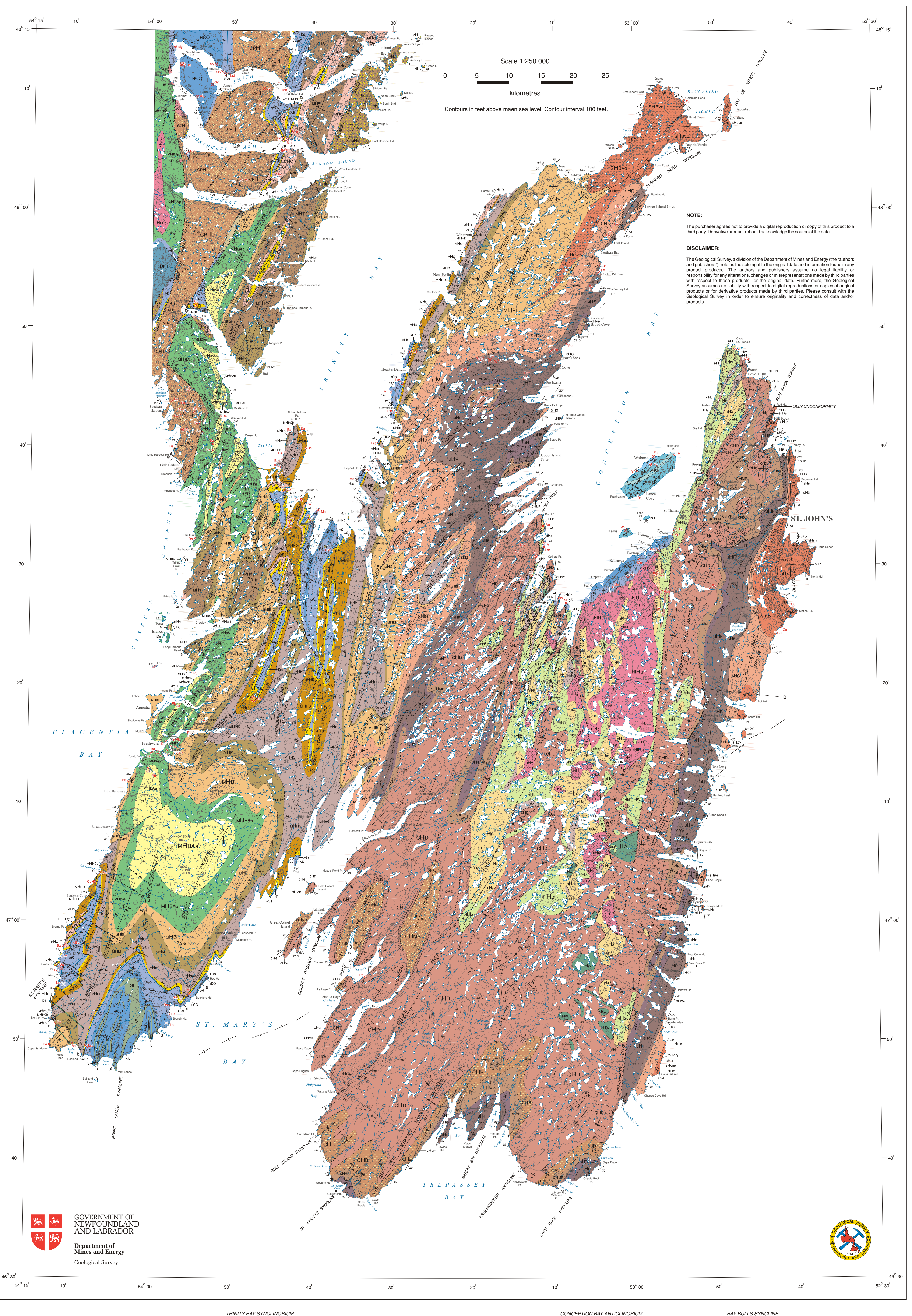
Patrykavage, T. 1995. Geology of the Avalon Peninsula, Newfoundland. *Geological Survey of Canada, Paper 95-10*, 100 pp.

St. John's Group. 1970. Geology of the Avalon Peninsula, Newfoundland. *Geological Survey of Canada, Paper 70-10*, 100 pp.

Trinity Group. 1970. Geology of the Avalon Peninsula, Newfoundland. *Geological Survey of Canada, Paper 70-10*, 100 pp.

Waplesack Group. 1970. Geology of the Avalon Peninsula, Newfoundland. *Geological Survey of Canada, Paper 70-10*, 100 pp.

Williams, H., and King, A.F. 1978. Geology of the Avalon Peninsula, Newfoundland. *Geological Survey of Canada, Paper 78-10*, 100 pp.



King, A.F. (compiler)
1988. Geology of the Avalon Peninsula, Newfoundland (parts of 1K, 1L, 1M, 1N and 2C).
Map 88-01 (coloured). Scale 1:250 000.
Government of Newfoundland and Labrador,
Department of Mines and Energy, Mineral Development Division, GSNF ML1980

LEGEND

U ₁ / exposure	positive aeromagnetic anomaly	T ₂ Fine grained gabbro dike
U ₂ / exposure		U ₃ / exposure
U ₄ / exposure		U ₅ / exposure
U ₆ / exposure		U ₇ / exposure
U ₈ / exposure		U ₉ / exposure
U ₁₀ / exposure		U ₁₁ / exposure
U ₁₂ / exposure		U ₁₃ / exposure
U ₁₄ / exposure		U ₁₅ / exposure
U ₁₆ / exposure		U ₁₇ / exposure
U ₁₈ / exposure		U ₁₉ / exposure
U ₂₀ / exposure		U ₂₁ / exposure
U ₂₂ / exposure		U ₂₃ / exposure
U ₂₄ / exposure		U ₂₅ / exposure
U ₂₆ / exposure		U ₂₇ / exposure
U ₂₈ / exposure		U ₂₉ / exposure
U ₃₀ / exposure		U ₃₁ / exposure
U ₃₂ / exposure		U ₃₃ / exposure
U ₃₄ / exposure		U ₃₅ / exposure
U ₃₆ / exposure		U ₃₇ / exposure
U ₃₈ / exposure		U ₃₉ / exposure
U ₄₀ / exposure		U ₄₁ / exposure
U ₄₂ / exposure		U ₄₃ / exposure
U ₄₄ / exposure		U ₄₅ / exposure
U ₄₆ / exposure		U ₄₇ / exposure
U ₄₈ / exposure		U ₄₉ / exposure
U ₅₀ / exposure		U ₅₁ / exposure
U ₅₂ / exposure		U ₅₃ / exposure
U ₅₄ / exposure		U ₅₅ / exposure
U ₅₆ / exposure		U ₅₇ / exposure
U ₅₈ / exposure		U ₅₉ / exposure
U ₆₀ / exposure		U ₆₁ / exposure
U ₆₂ / exposure		U ₆₃ / exposure
U ₆₄ / exposure		U ₆₅ / exposure
U ₆₆ / exposure		U ₆₇ / exposure
U ₆₈ / exposure		U ₆₉ / exposure
U ₇₀ / exposure		U ₇₁ / exposure
U ₇₂ / exposure		U ₇₃ / exposure
U ₇₄ / exposure		U ₇₅ / exposure
U ₇₆ / exposure		U ₇₇ / exposure
U ₇₈ / exposure		U ₇₉ / exposure
U ₈₀ / exposure		U ₈₁ / exposure
U ₈₂ / exposure		U ₈₃ / exposure
U ₈₄ / exposure		U ₈₅ / exposure
U ₈₆ / exposure		U ₈₇ / exposure
U ₈₈ / exposure		U ₈₉ / exposure
U ₉₀ / exposure		U ₉₁ / exposure
U ₉₂ / exposure		U ₉₃ / exposure
U ₉₄ / exposure		U ₉₅ / exposure
U ₉₆ / exposure		U ₉₇ / exposure
U ₉₈ / exposure		U ₉₉ / exposure
U ₁₀₀ / exposure		U ₁₀₁ / exposure

MUSGRAVE TOWN GROUP

- HARCOURT GROUP (HCO)
- ADEYTON GROUP (AG)
- MUSGRAVE TOWN GROUP (MUG)
- CONNECTION POINT GROUP (CPH)
- HOLYWOOD INTRUSIVE SUITE (HIS)
- ST. JOHN'S GROUP (SJO)
- CONCEPTION GROUP (CON)
- HARBOUR MAIN GROUP (HMG)
- SIGNAL HILL GROUP (SHG)

LEGEND

- U₁ / exposure
- U₂ / exposure
- U₃ / exposure
- U₄ / exposure
- U₅ / exposure
- U₆ / exposure
- U₇ / exposure
- U₈ / exposure
- U₉ / exposure
- U₁₀ / exposure
- U₁₁ / exposure
- U₁₂ / exposure
- U₁₃ / exposure
- U₁₄ / exposure
- U₁₅ / exposure
- U₁₆ / exposure
- U₁₇ / exposure
- U₁₈ / exposure
- U₁₉ / exposure
- U₂₀ / exposure
- U₂₁ / exposure
- U₂₂ / exposure
- U₂₃ / exposure
- U₂₄ / exposure
- U₂₅ / exposure
- U₂₆ / exposure
- U₂₇ / exposure
- U₂₈ / exposure
- U₂₉ / exposure
- U₃₀ / exposure
- U₃₁ / exposure
- U₃₂ / exposure
- U₃₃ / exposure
- U₃₄ / exposure
- U₃₅ / exposure
- U₃₆ / exposure
- U₃₇ / exposure
- U₃₈ / exposure
- U₃₉ / exposure
- U₄₀ / exposure
- U₄₁ / exposure
- U₄₂ / exposure
- U₄₃ / exposure
- U₄₄ / exposure
- U₄₅ / exposure
- U₄₆ / exposure
- U₄₇ / exposure
- U₄₈ / exposure
- U₄₉ / exposure
- U₅₀ / exposure
- U₅₁ / exposure
- U₅₂ / exposure
- U₅₃ / exposure
- U₅₄ / exposure
- U₅₅ / exposure
- U₅₆ / exposure
- U₅₇ / exposure
- U₅₈ / exposure
- U₅₉ / exposure
- U₆₀ / exposure
- U₆₁ / exposure
- U₆₂ / exposure
- U₆₃ / exposure
- U₆₄ / exposure
- U₆₅ / exposure
- U₆₆ / exposure
- U₆₇ / exposure
- U₆₈ / exposure
- U₆₉ / exposure
- U₇₀ / exposure
- U₇₁ / exposure
- U₇₂ / exposure
- U₇₃ / exposure
- U₇₄ / exposure
- U₇₅ / exposure
- U₇₆ / exposure
- U₇₇ / exposure
- U₇₈ / exposure
- U₇₉ / exposure
- U₈₀ / exposure
- U₈₁ / exposure
- U₈₂ / exposure
- U₈₃ / exposure
- U₈₄ / exposure
- U₈₅ / exposure
- U₈₆ / exposure
- U₈₇ / exposure
- U₈₈ / exposure
- U₈₉ / exposure
- U₉₀ / exposure
- U₉₁ / exposure
- U₉₂ / exposure
- U₉₃ / exposure
- U₉₄ / exposure
- U₉₅ / exposure
- U₉₆ / exposure
- U₉₇ / exposure
- U₉₈ / exposure
- U₉₉ / exposure
- U₁₀₀ / exposure

SIMPLIFIED MAP OF PRINCIPAL STRUCTURES AND STRATIGRAPHIC DIVISIONS

Diagram of Major Stratigraphic Relationships (not drawn to scale)

Relationships between the Musgrave Town Group, Connection Point Group, Harbour Main Group, St. John's Group, and Conception Group are shown. The diagram illustrates the complex interrelationships and structural positions of these geological units, including the impact of the Trinity Bay Syncline and the Bay Bulls Syncline.