

Newfoundland and Labrador C-NLOPB Data & Information Hub

Interactive Offshore Activity Map

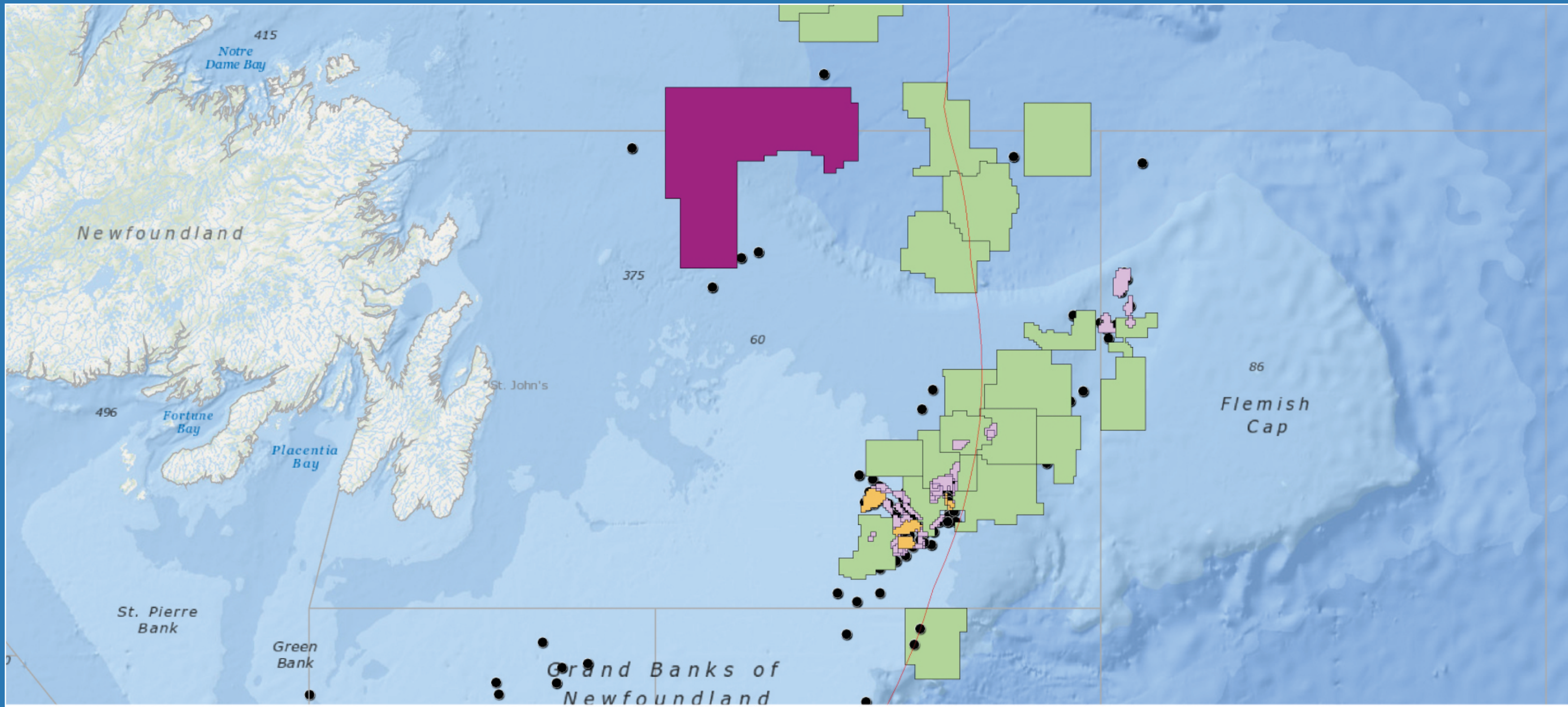
Shapefiles

Schedule of Wells Summary

Geophysical Program Inventory

What's New

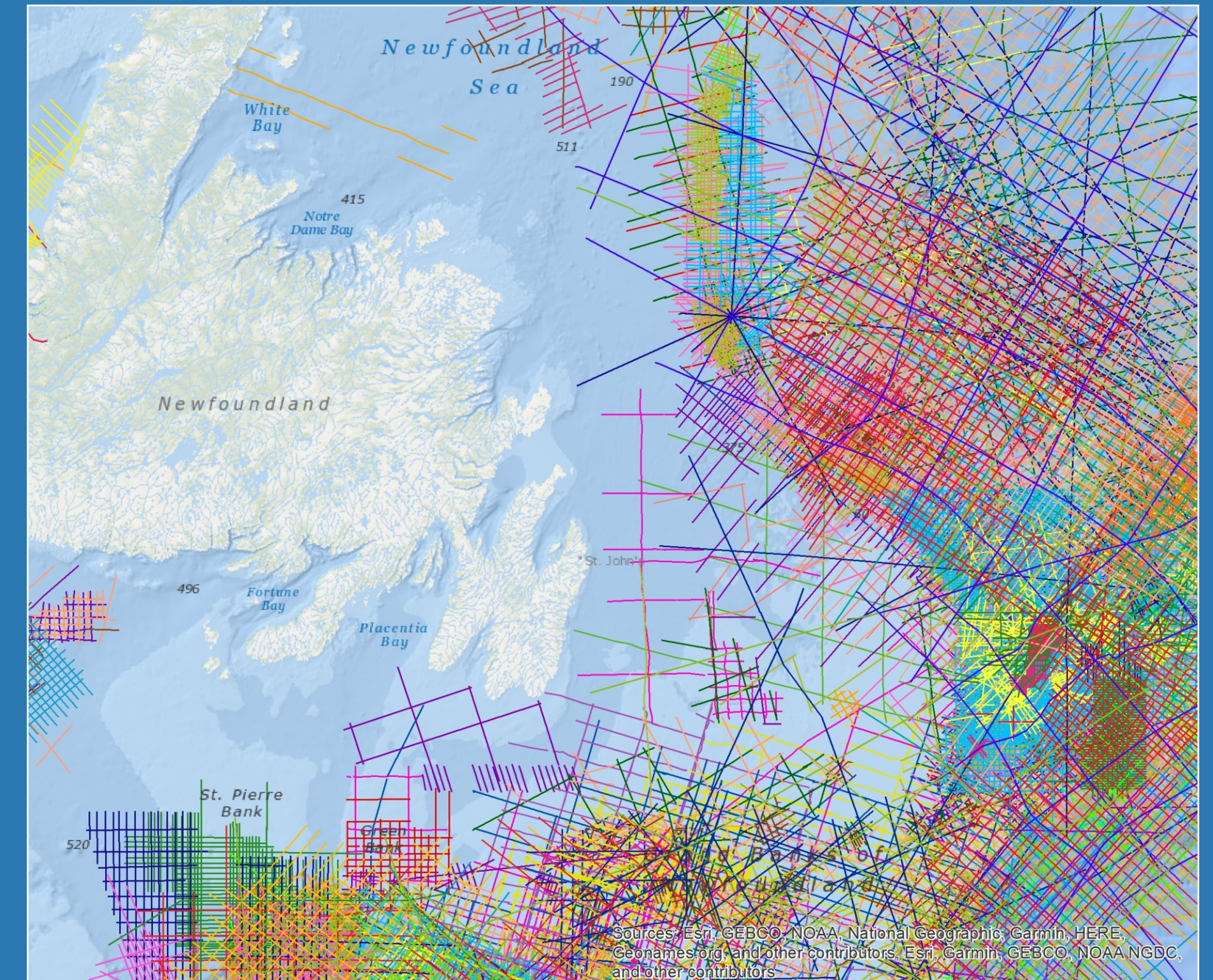
Contact Us



Canada-NL Offshore Activity Map

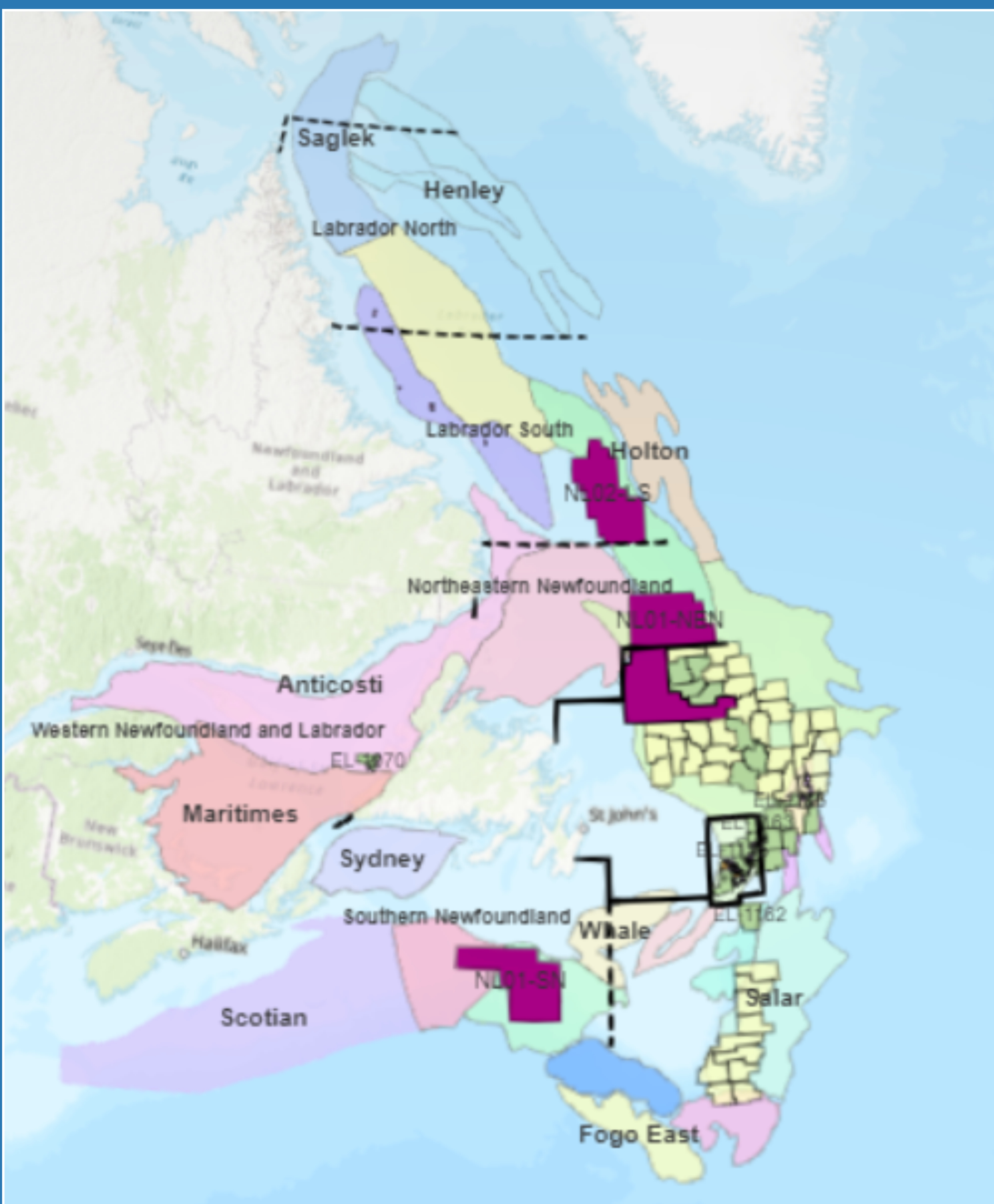
Data and information related to the Canada-Newfoundland and Labrador Offshore Area

Explore



Call for Nominations (Areas of Interest) - NL22-CFN01
Eastern Newfoundland - Closing Date: March 9, 2022

Explore



Layer List

- Wells
- Land Tenure Regions
- 2D Seismic
- 3D Seismic
- Eastern Canadian Commercial Fishing - All Species
- Eastern Canadian Commercial Fishing - Gear Type Fixed
- Eastern Canadian Commercial Fishing - Gear Type Mobile
- Eastern Canadian Commercial Fishing - Species - Queen Snow Crab
- Eastern Canadian Commercial Fishing - Species - Turbot Greenland Halibut
- Active - Call for Bids

Several data types available for download

Well and Field Data

- End of Well Reports
- PDF of Well Logs*
- Biostratigraphy Reports
- Geological Report & Striplogs
- Well Fluid Test Data
- Average Reservoir Properties
- Checkshot & VSP Surveys

Seismic & Land Data

- Geophysical* Program Inventory
- Downloadable Shapefiles
- Land Licence Registry
- Regulatory & Safety Guidelines

* segy & las files available upon request

Available at <https://home-cnlopb.hub.arcgis.com/>

Calgary

London

St. John's

Houston

Newfoundland
&
Labrador