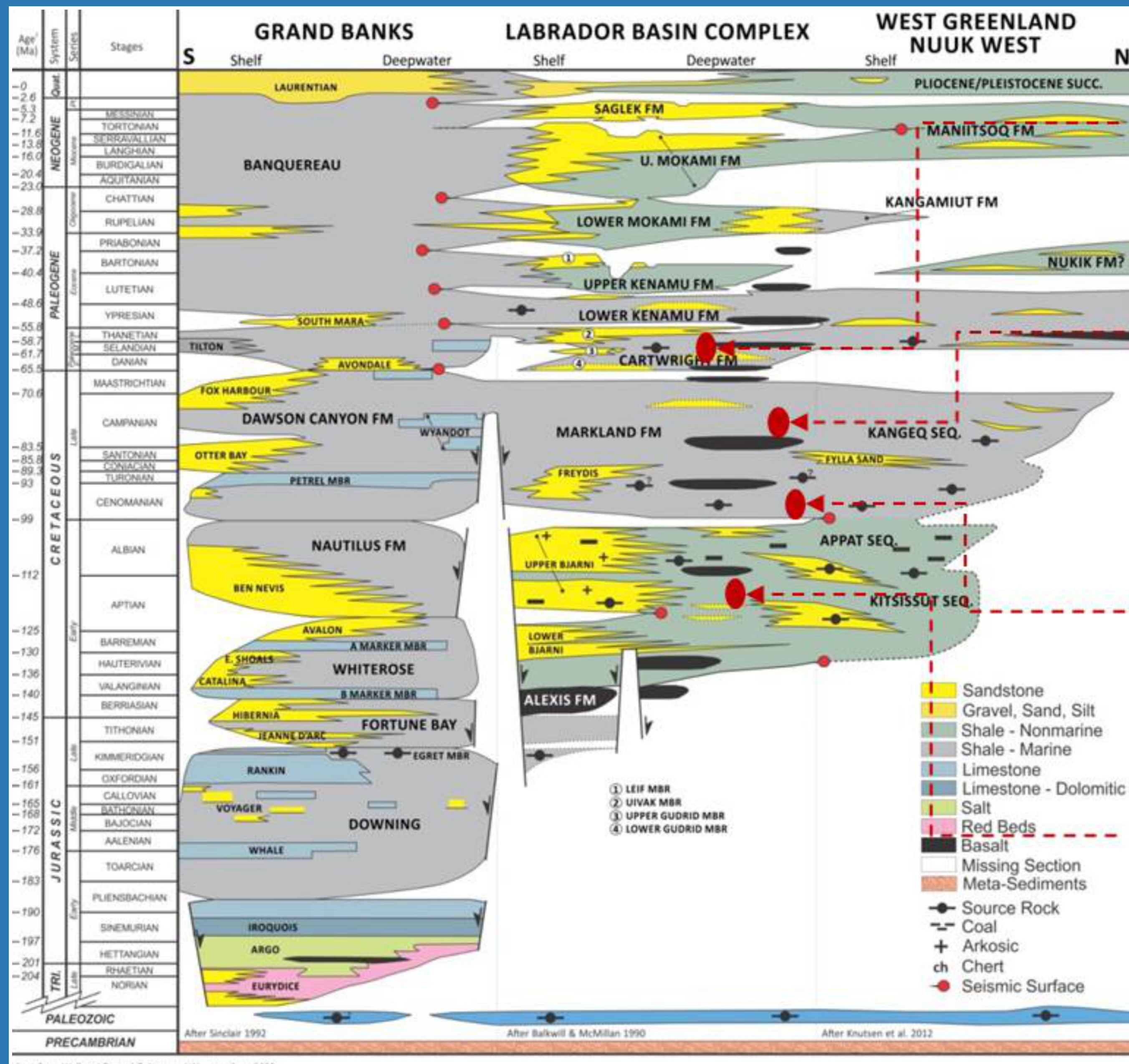


Newfoundland and Labrador Labrador South Region Seismic and Geology



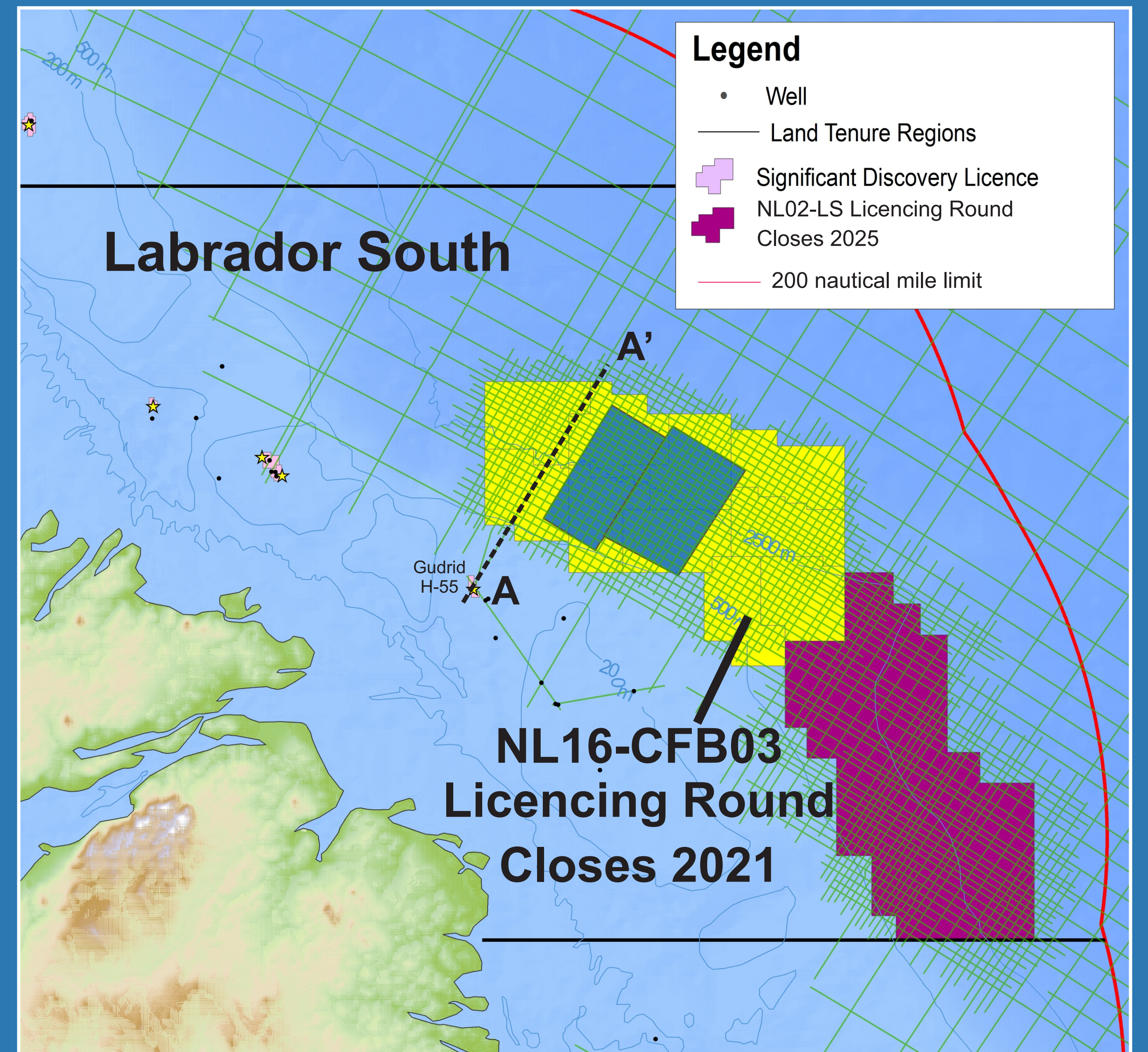
Immature to locally early mature marine shales on the shelf

Zone of early mature (near-shore marine?) shales

Thin to not present marine shale Labrador shelf

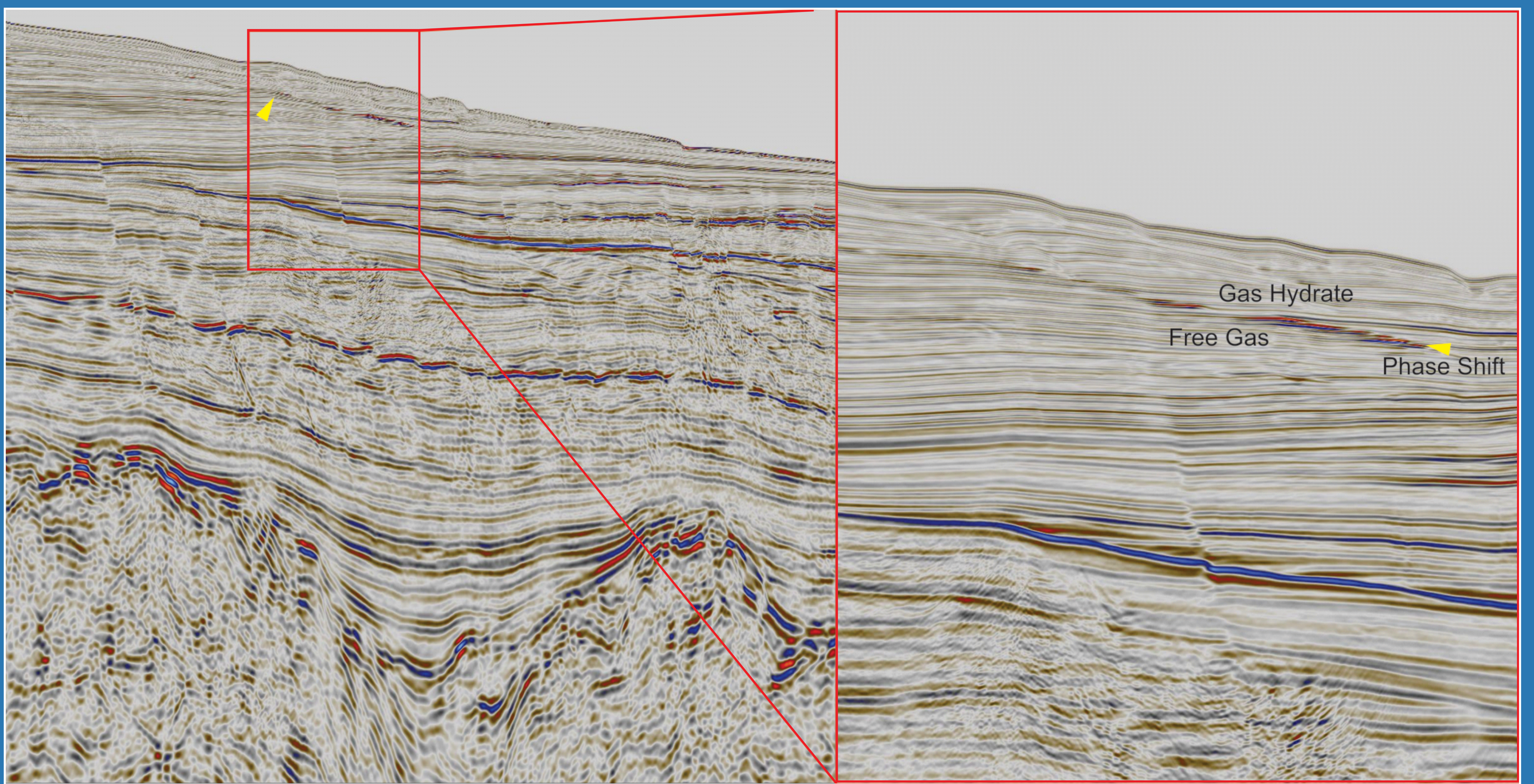
High TOC anoxic event in ODP 1276

Mature terrestrial shales on shelf

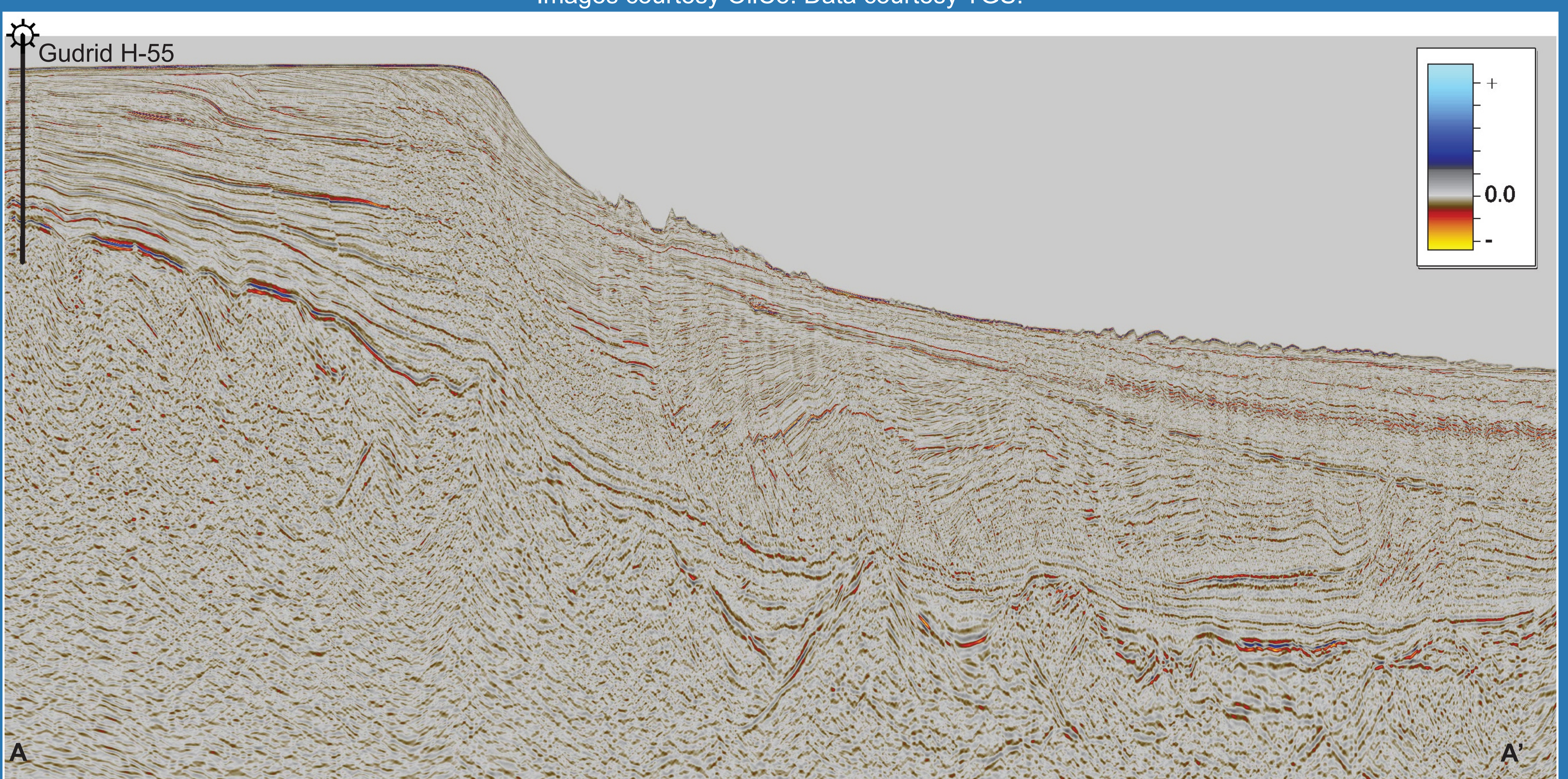


Shales (red circles) with high TOC and vitrinite reflectance could be potential source rocks depending on where they lie in depth on the shelf, slope and deepwater areas

Modern 2D and 3D seismic data available for license over Labrador South Call for Bids and Call for Nomination areas



Representative seismic lines showing bottom-simulating reflector and 2021 Call for Bids potential. Images courtesy OilCo. Data courtesy TGS.



Calgary

London

St. John's

Houston

Newfoundland
Labrador