

ENGINEERING ANALYSIS

REGULATION OF OPERATING AND DEVELOPING MINES

Teck Duck Pond Mine



Boundary deposit North-pit
(Ore mucking after the bench blast)

Rambler Ming Mine

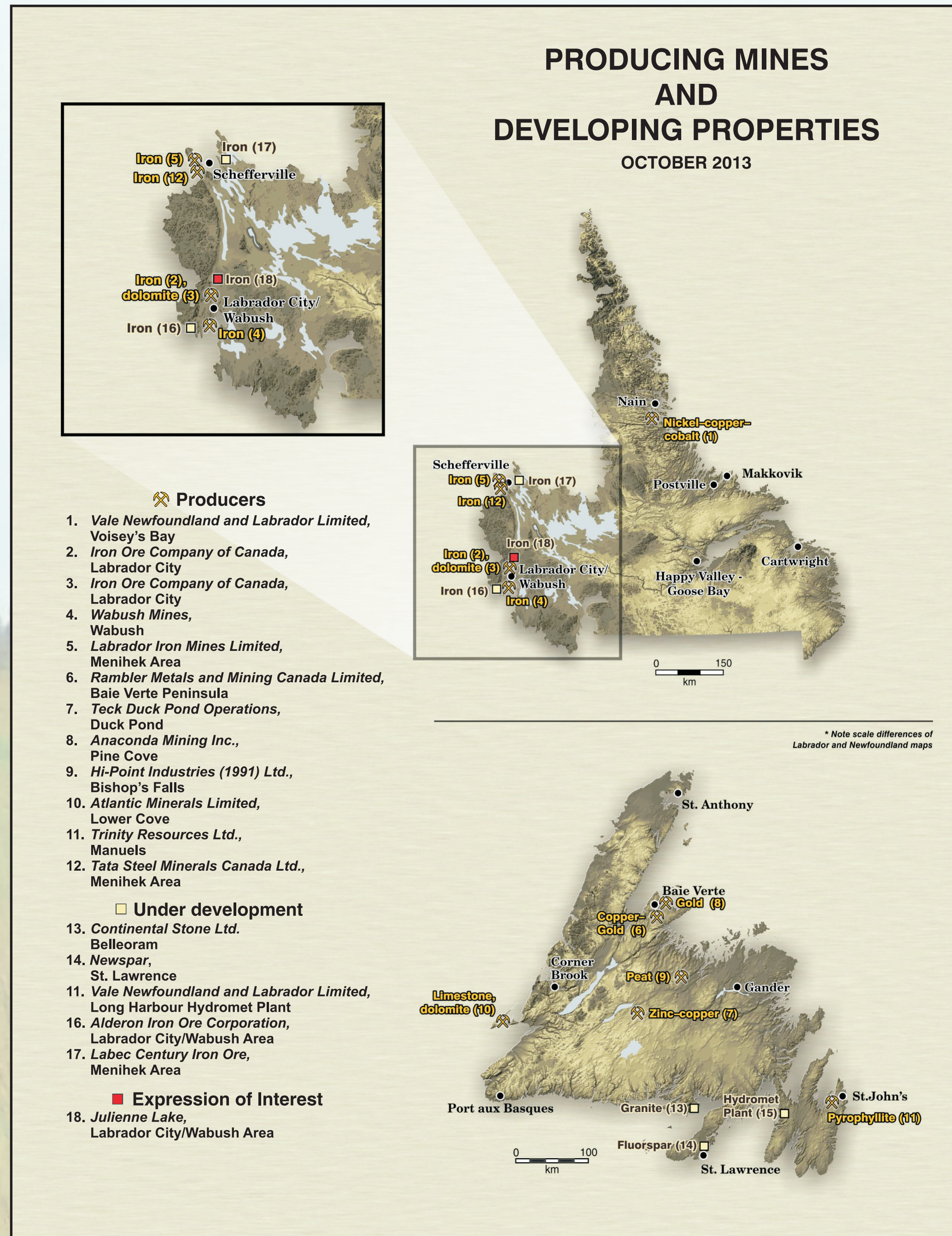


Ground support crew at level 460
installing rock bolts

TATA Steel Minerals Canada



Covering the dome structure

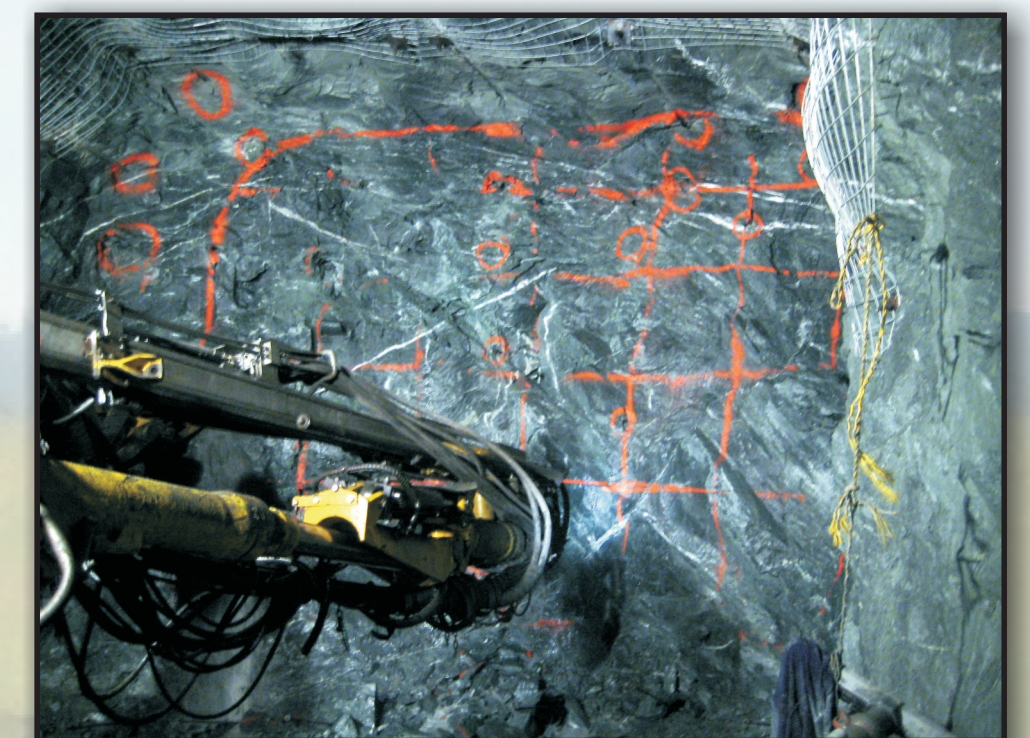


Teck Duck Pond Mine



Resource drilling Lower Duck Zone-DPO

Rambler Ming Mine



Ramp development on level 1807 west

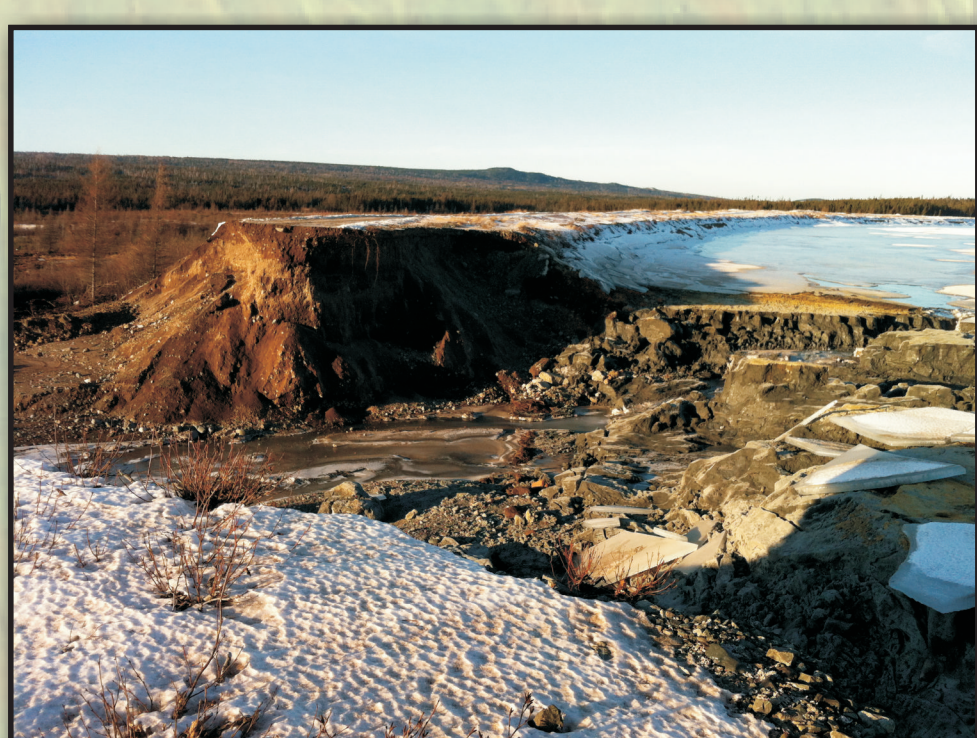
TATA Steel Minerals Canada



Fleming 7N - Overburden stripping

MINE REHABILITATION

Gullbridge Tailings Dam Rehabilitation



Gullbridge breach before repair



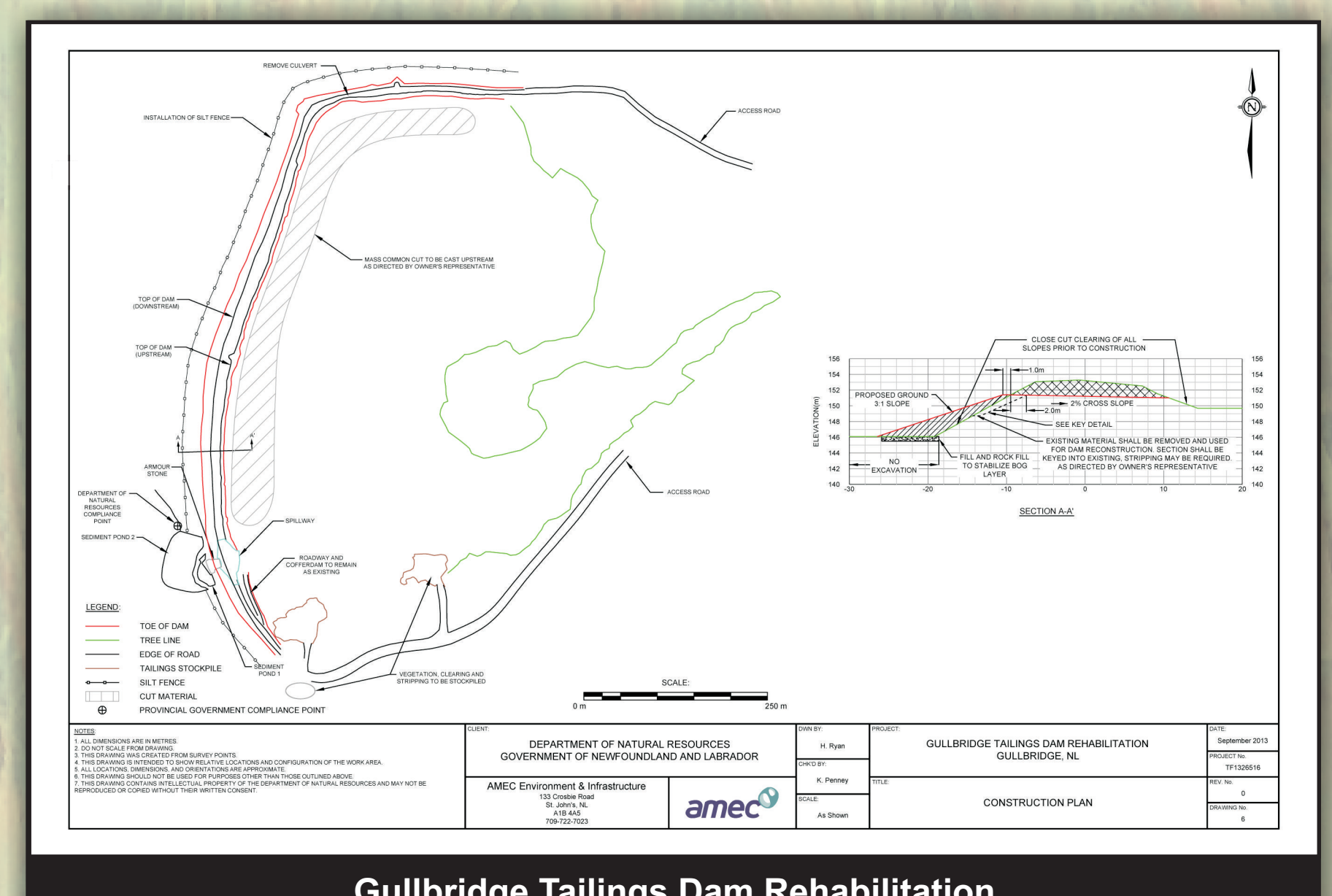
Gullbridge breach after repair



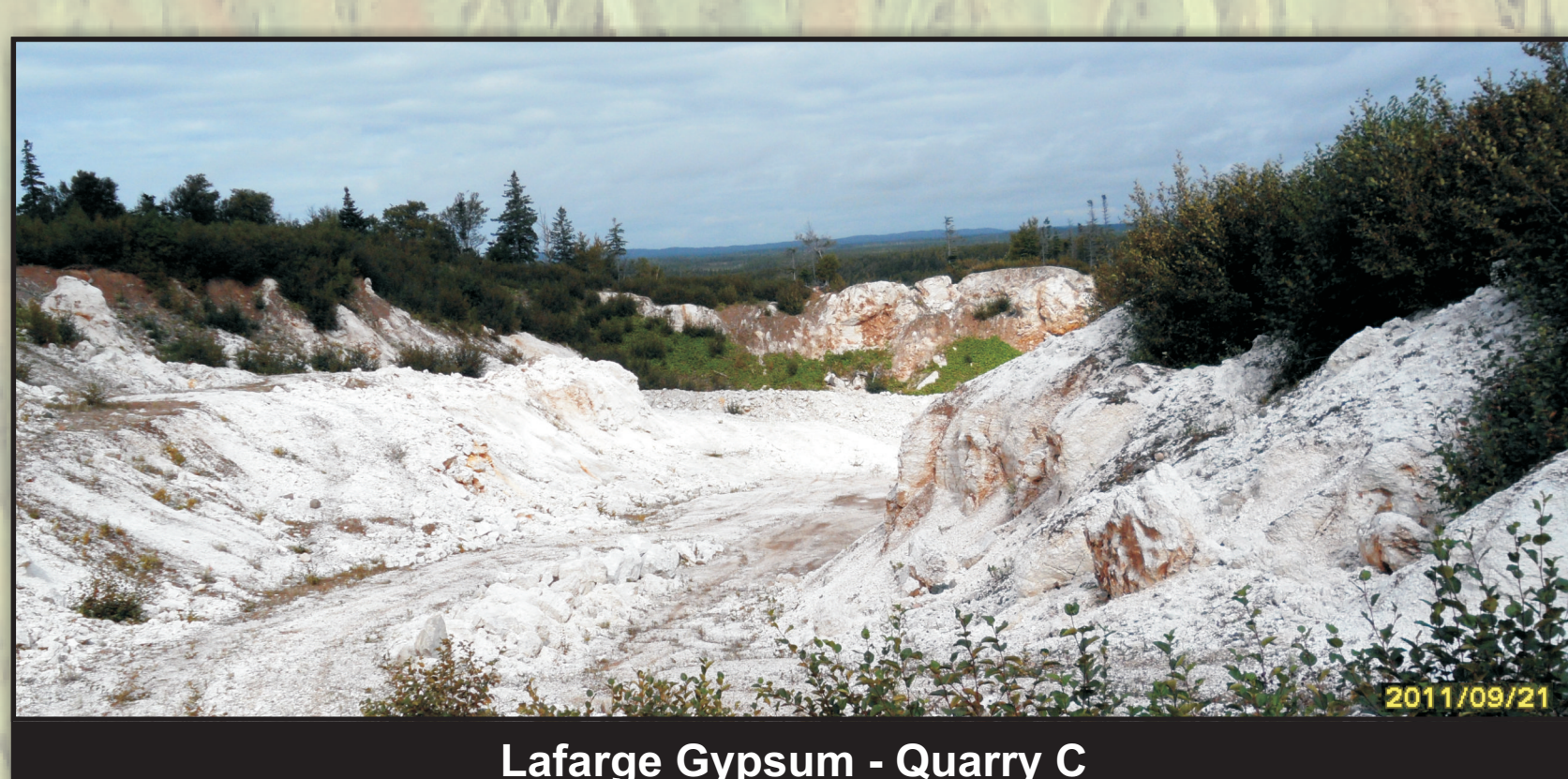
Gullbridge Tailings Facility

PROJECT INFORMATION

- DESIGN: AMEC Americas Limited
- Reason for work: Dam instability. The dam does not meet the geotechnical and hydrotechnical requirements of the Canadian Dam Association.
- Length of existing dam 1070 m.
- Project includes: Increasing the Factor of Safety of the dam by reshaping it to make it lower and wider.



Lafarge Gypsum Rehabilitation



Lafarge Gypsum - Quarry C



Lafarge Gypsum - Rehabilitated Quarry C