



**PETREL
ROBERTSON LTD.**

**CORE PHOTOGRAPHY
FOR**

**MOBIL YORK HARBOUR #1C
C-1, NF**

Prepared for: **MOBIL OIL CANADA
330 - 5TH AVENUE S.W.
CALGARY, AB, T2P 0L4**

Prepared by: **Petrel Robertson Ltd.
2801 - 18th Street N.E.
Calgary, Alberta, T2E 7K5**

Project No.: **PRL/97027**

Report date: **Thursday, January 30, 1997**

CONFIDENTIAL



**PETREL
ROBERTSON LTD.**
An Alliance of the
Robertson Group

MOBIL YORK HARBOUR

C-1

TOP

BOX 71



197.33



^198



^199



^200

200.11



0 cm

5

10

15

20

25

30

35

40

45

50

55

60

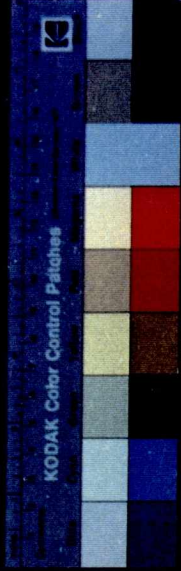
BOTTOM

MOBIL YORK HARBOUR

C-1

BOX 71

TOP



197.33

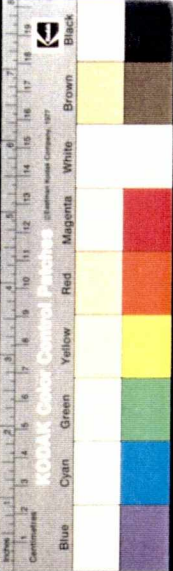
^198

^199

^200

200.11





MOBIL YORK HARBOUR
C-1



BOX 72

TOP

200.11



^201



^202



^203



MOBIL YORK HARBOUR

C-1

BOX 72

TOP

200.11

^201

^202

^203





MOBIL YORK HARBOUR
C-1

TOP

BOX 73

203.00



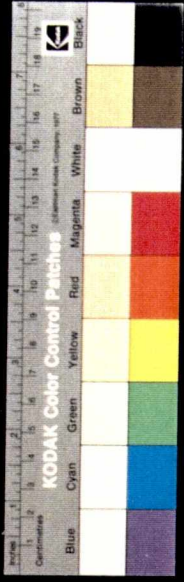
^204



^205



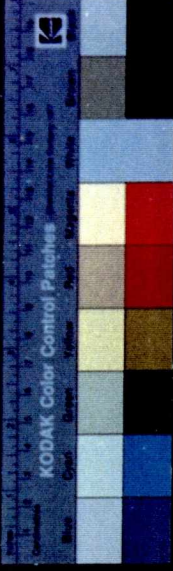
205.74



60
55
50
45
40
35
30
25
20
15
10
5
0cm

TOP

BOTTOM

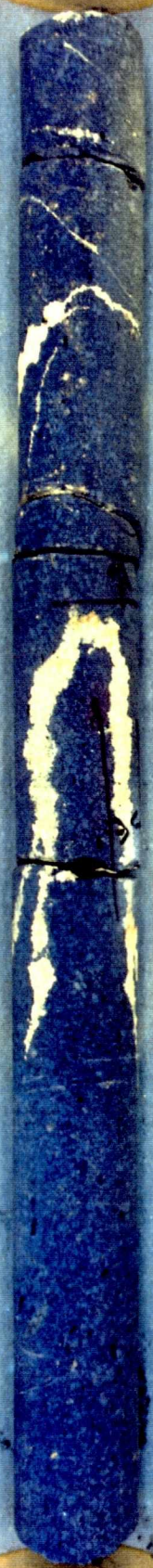


MOBIL YORK HARBOUR
C-1

BOX 74

TOP

205.74



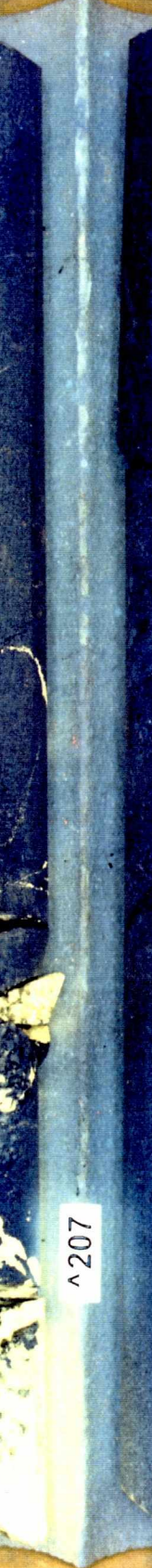
^206



^207



^208



208.64



0cm

5

10

15

20

25

30

35

40

45

50

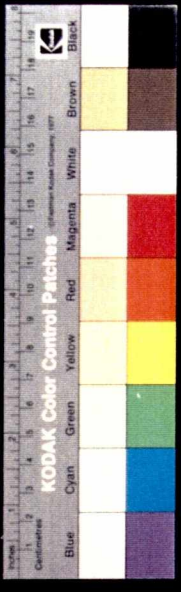
55

60

BOTTOM



MOBIL YORK HARBOUR
C-1



TOP

BOX 75

208.64



^209



^210



^211



211.46

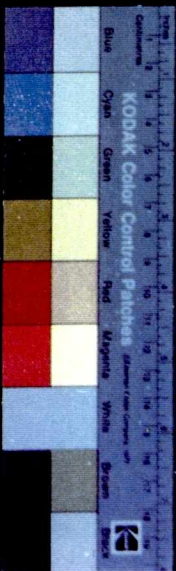




MOBIL YORK HARBOUR
C-1

TOP

BOX 75



208.64

^209

^210

^211

211.46

0cm 5 10 15 20 25 30 35 40 45 50 55 60
BOTTOM

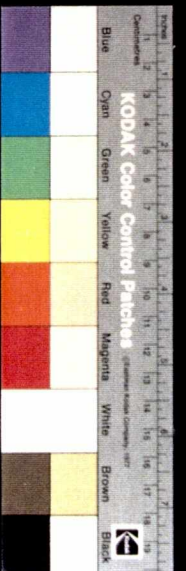


PETREL
ROBERTSON LTD.
 An Affiliate of the
 Robertson Group

MOBIL YORK HARBOUR
 # C-1

TOP

BOX 76



211.46

^212

^213

^214

214.17



MOBIL YORK HARBOUR

C-1

BOX 76

TOP

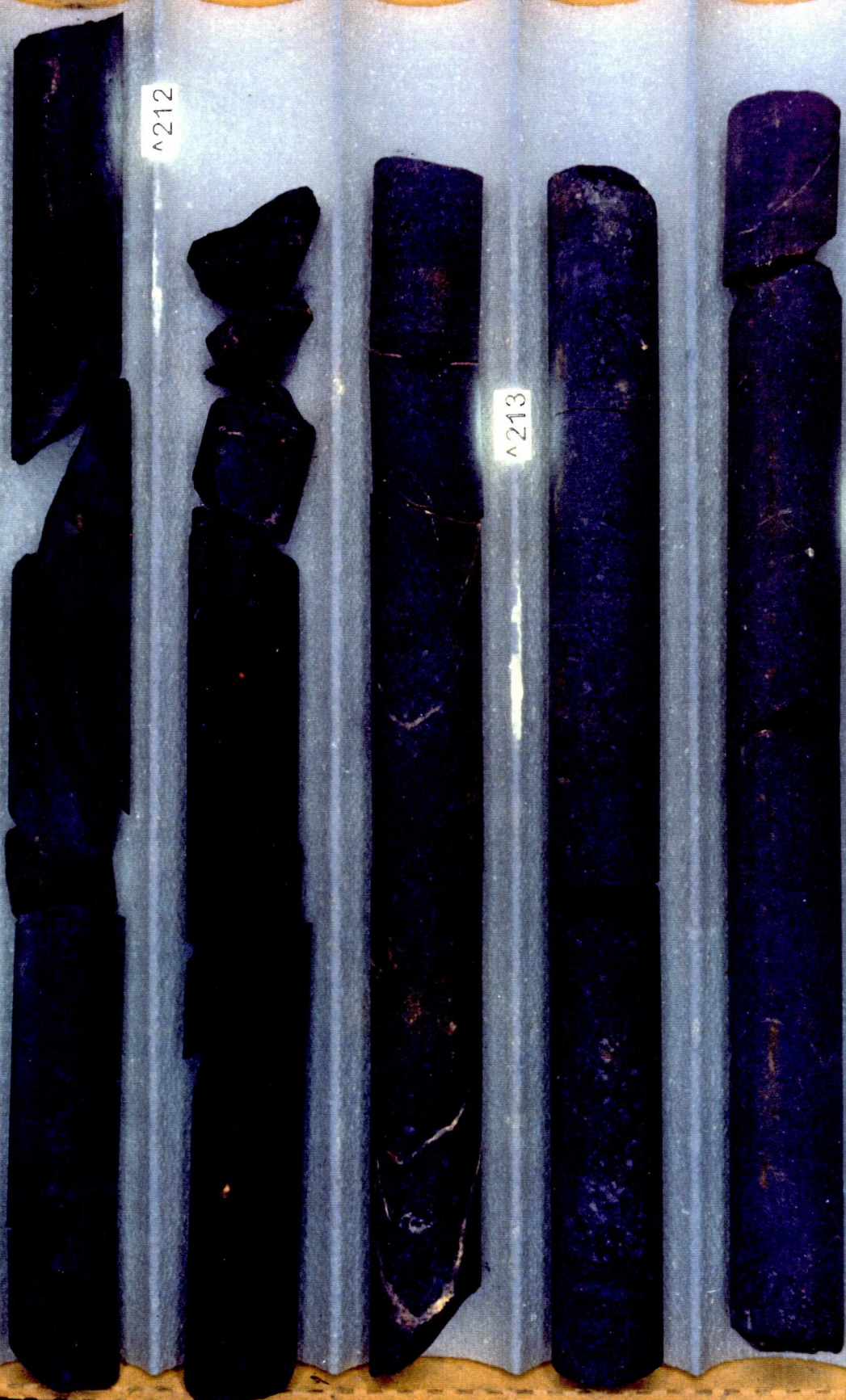
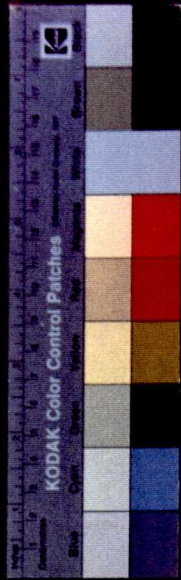
211.46

^212

^213

^214

214.17





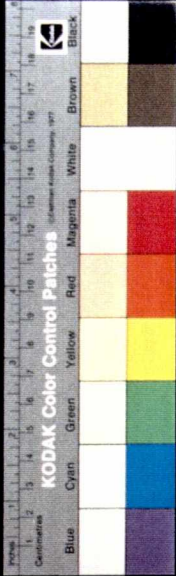
PETREL
ROBERTSON LTD.
 An Affiliate of the
 Robertson Group

MOBIL YORK HARBOUR

C-1

TOP

BOX 77



214.17



^215



^216



216.99

0 cm

5

10

15

20

25

30

35

40

45

50

55

60

BOTTOM



MOBIL YORK HARBOUR

C-1

BOX 77



TOP

21117

^215

^216

216.99



0cm

5

10

15

20

25

30

35

40

45

50

55

60

BOTTOM



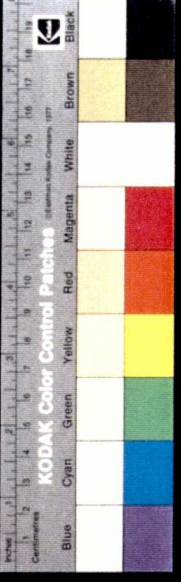
PETREL
ROBERTSON LTD.
An Affiliate of the
Robertson Group

MOBIL YORK HARBOUR

C-1

TOP

BOX 78



216.99

^217

^218

^219

219.74



0 cm

5

10

15

20

25

30

35

40

45

50

55

60

BOTTOM

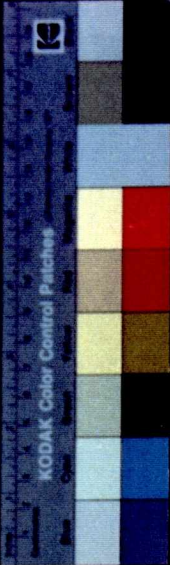
MOBIL YORK HARBOUR

C-1

BOX 78

TOP

PETREL ROBERTSON LTD.
An Affiliate of the
Petroleum Group



216.99

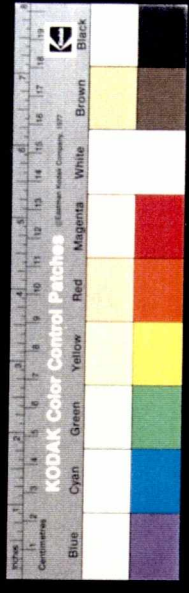
^217

^218

^219

219.74

0 cm 5 10 15 20 25 30 35 40 45 50 55 60
BOTTOM



MOBIL YORK HARBOUR
C-1



TOP BOX 79



219.74

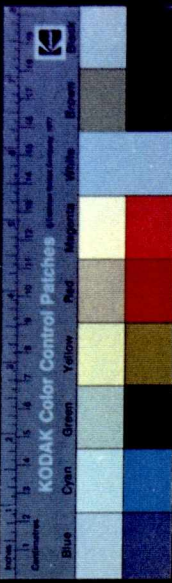
^220

^221

^222

222.55





MOBIL YORK HARBOUR

C-1

BOX 79

TOP

219.74

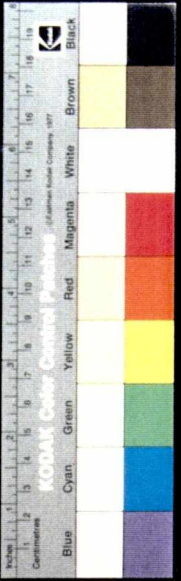
^220

^221

^222

222.55





MOBIL YORK HARBOUR
C-1



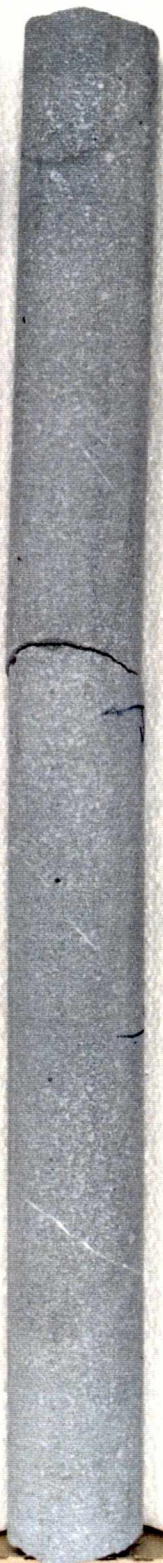
BOX 80

TOP

222.55



^223



^224



^225

225.33





PETREL
ROBERTSON LTD.
An Affiliate of the
Preston Group

MOBIL YORK HARBOUR

C-1

TOP

BOX 80

222.55

^223

^224

^225

225.33

0cm

5

10

15

20

25

30

35

40

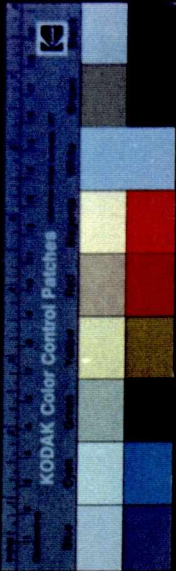
45

50

55

60

BOTTOM





PETREL
ROBERTSON LTD.
An Affiliate of the
Robertson Group

MOBIL YORK HARBOUR

C-1

TOP

BOX 81

225.33



^226



^227



^228

228.05

0 cm

5

10

15

20

25

30

35

40

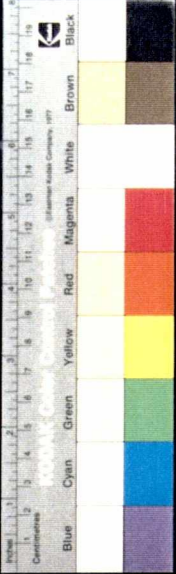
45

50

55

60

BOTTOM





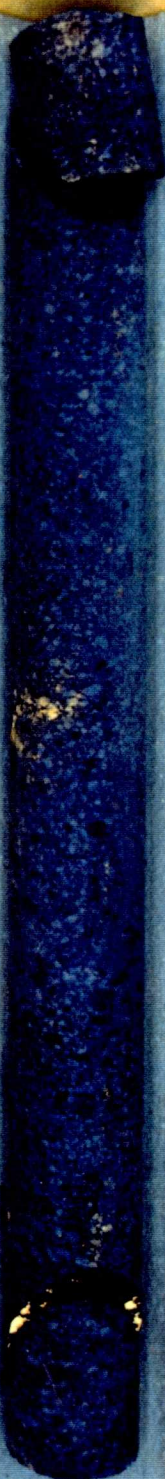
MOBIL YORK HARBOUR
C-1

TOP

BOX 81



225.33



^ 226



^ 227



^ 228

228.05





PETREL
ROBERTSON LTD.
 An Affiliate of the
 Robertson Group

MOBIL YORK HARBOUR

C-1

TOP

BOX 82

228.05



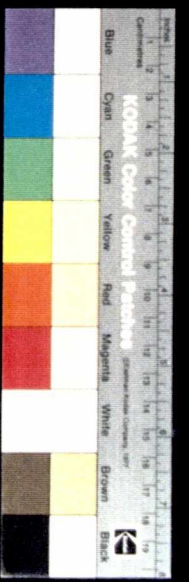
229



230



230.75



MOBIL YORK HARBOUR

C-1

BOX 82

TOP

228.05

^229

^230

230.75

0cm

5

10

15

20

25

30

35

40

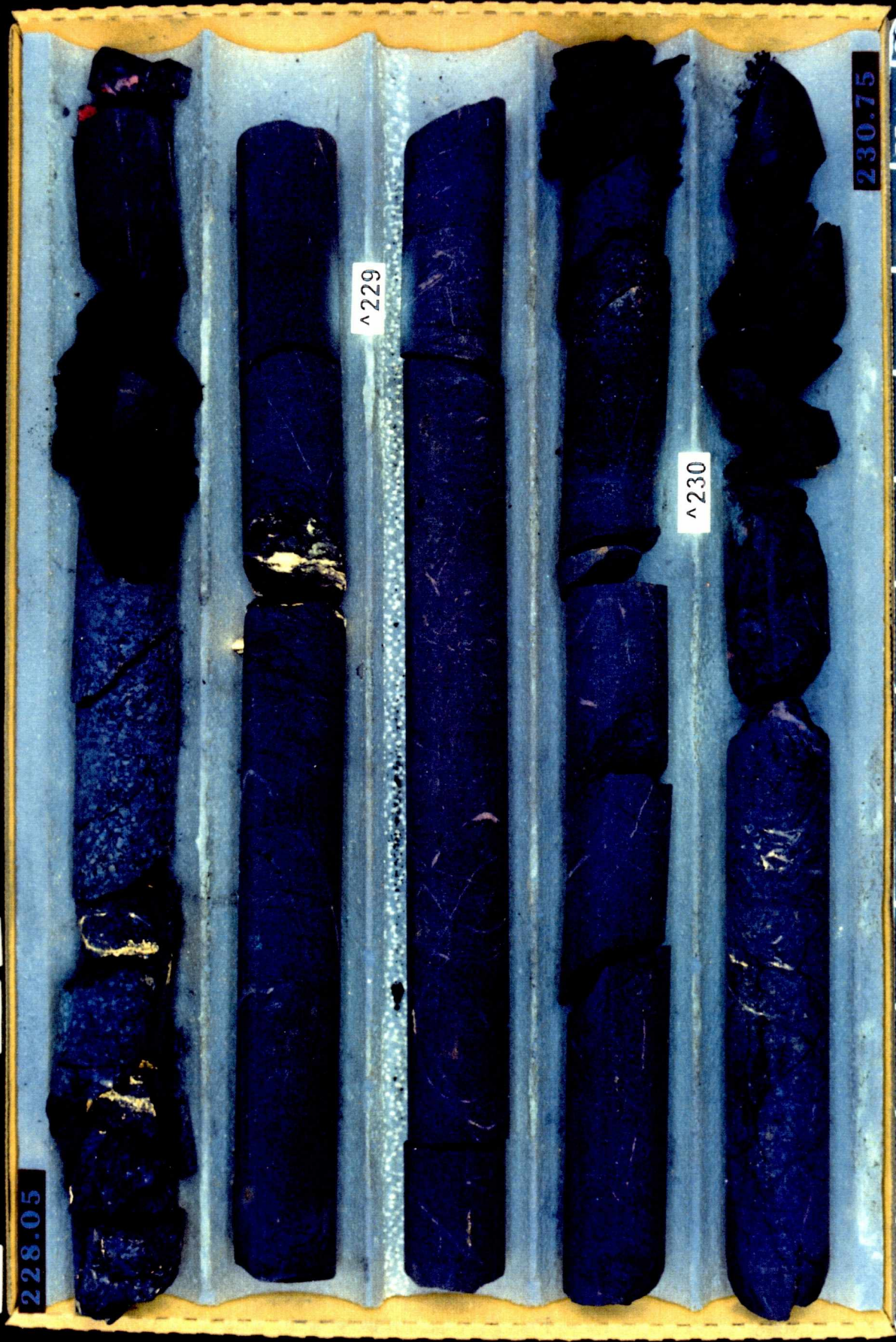
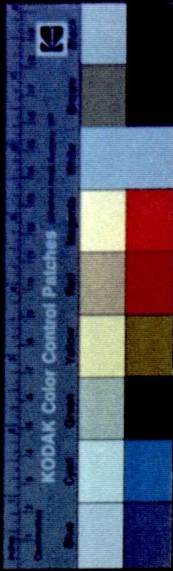
45

50

55

60

BOTTOM



MOBIL YORK HARBOUR

C-1

BOX 83

TOP

230.75

^231

^232

^233

233.48

0 cm

5

10

15

20

25

30

35

40

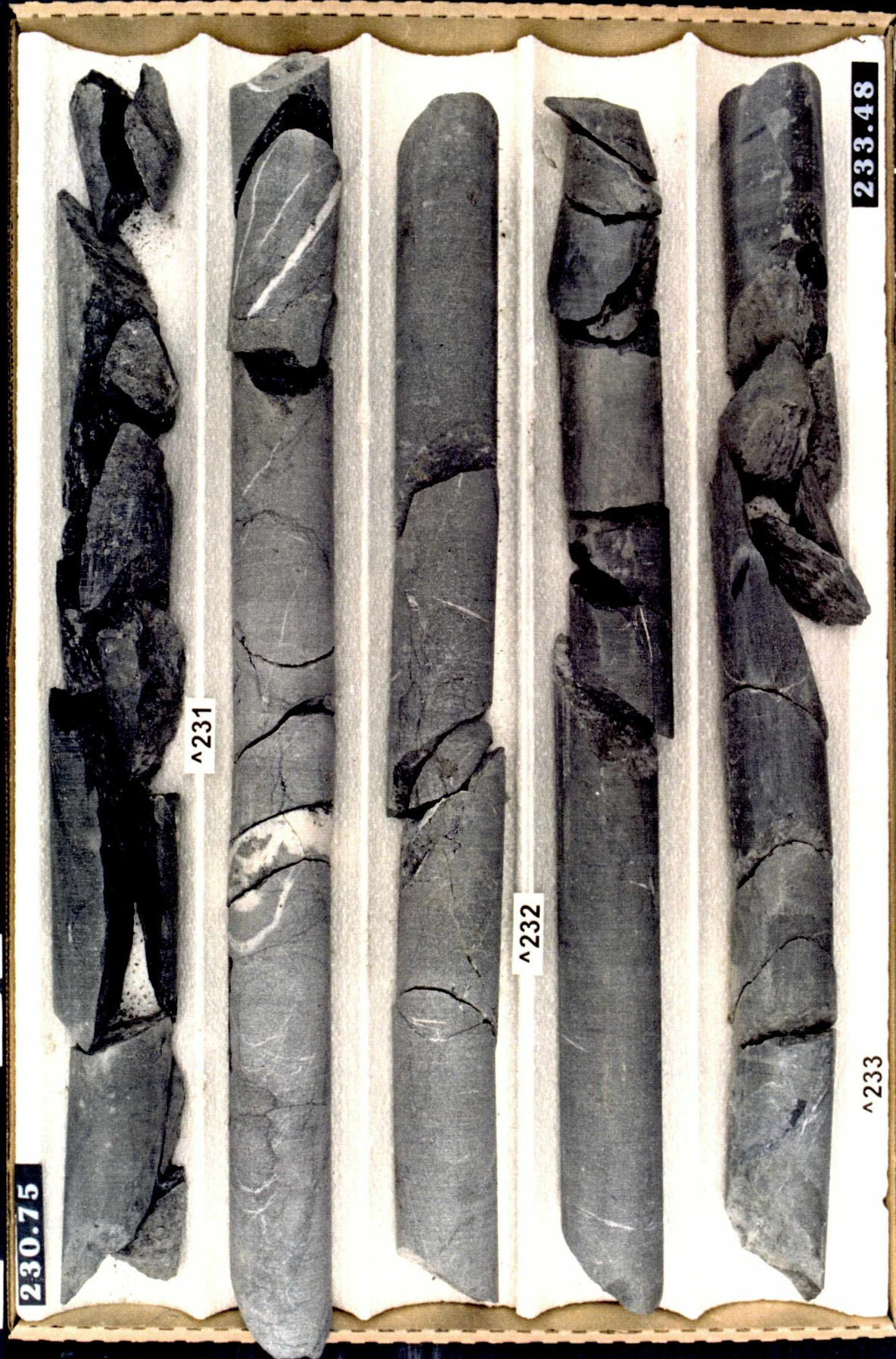
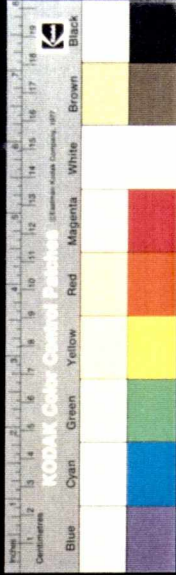
45

50

55

60

BOTTOM



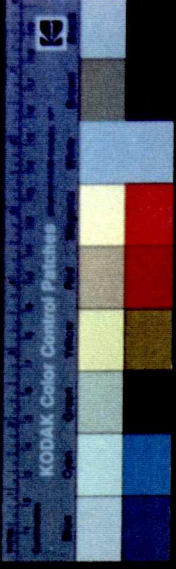
PETREL
ROBERTSON LTD.
An Affiliate of the
Robertson Group

MOBIL YORK HARBOUR

C-1

TOP

BOX 83



230.75

^231

^232

^233

233.48

0cm

5

10

15

20

25

30

35

40

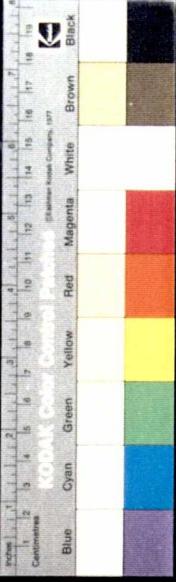
45

50

55

60

BOTTOM



MOBIL YORK HARBOUR

C-1

BOX 84

TOP

233.48



^234



^235



^236

236.33



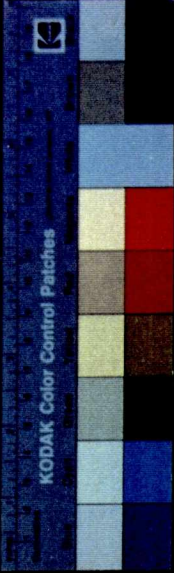


MOBIL YORK HARBOUR

C-1

TOP

BOX 84



233.48



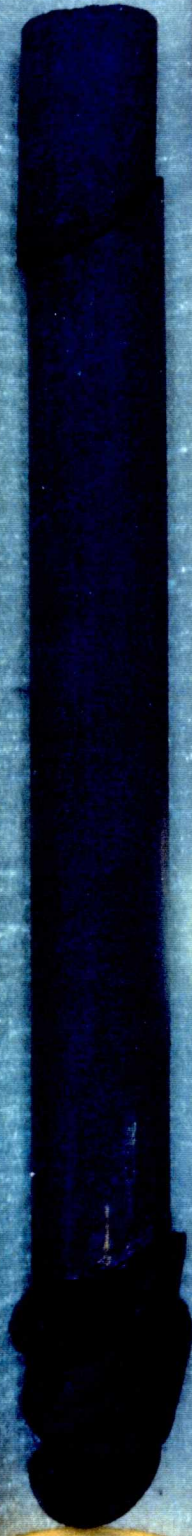
^234



^235



^236



236.33

0cm

5

10

15

20

25

30

35

40

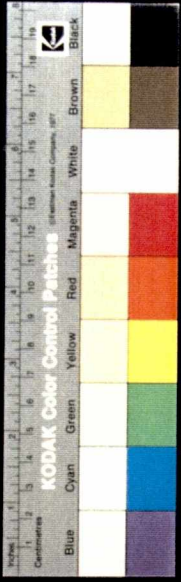
45

50

55

60

BOTTOM



MOBIL YORK HARBOUR
C-1



BOX 85

TOP

236.33



^237



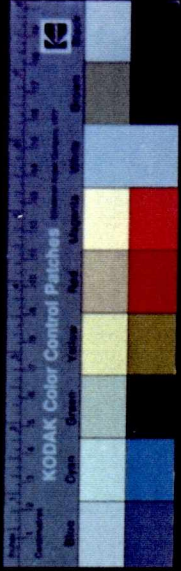
^238



^239

239.12





MOBIL YORK HARBOUR

C-1

BOX 85

TOP

236.33

^237

^238

^239

239.12



0cm

5

10

15

20

25

30

35

40

45

50

55

60

BOTTOM



**PETREL
ROBERTSON LTD.**
A member of the
Robertson Group

MOBIL YORK HARBOUR

C-1

TOP

BOX 86

239.12



^240



^241



241.93



0 cm

5

10

15

20

25

30

35

40

45

50

55

60

BOTTOM



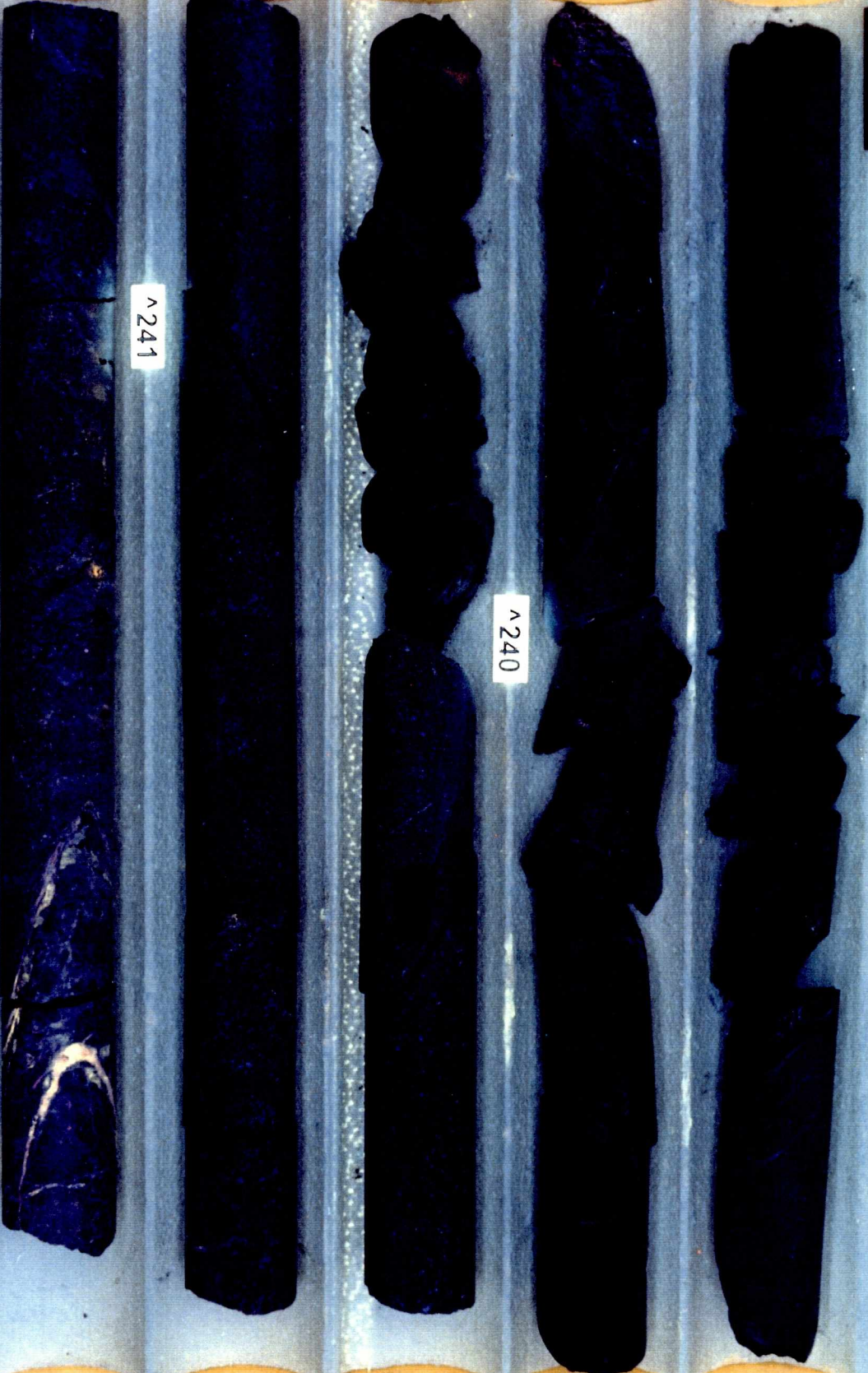
MOBIL YORK HARBOUR
C-1

TOP

BOX 86



239.12



^ 241

^ 240

241.93



BOTTOM



PETREL
ROBERTSON LTD.
 An Affiliate of the
 Robertson Group

MOBIL YORK HARBOUR

C-1

TOP

BOX 87

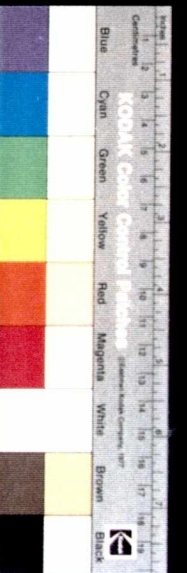
241.93

^242

^243

^244

244.80



BOTTOM



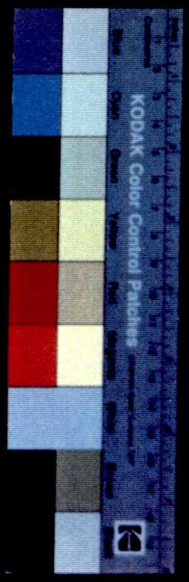
PETROL
ROBERTSON LTD
A Division of the
Petroleum Group

MOBIL YORK HARBOUR

C-1

TOP

BOX 87



241.93

^ 242

^ 243

^ 244

244.80

0cm 5 10 15 20 25 30 35 40 45 50 55 60
BOTTOM



**PETREL
ROBERTSON LTD.**
An Affiliate of the
Robertson Group

MOBIL YORK HARBOUR

C-1

TOP

BOX 88

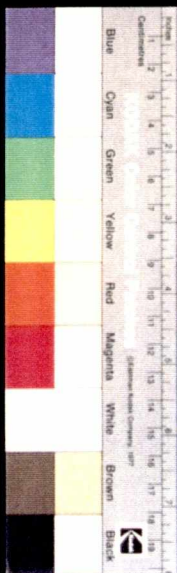
244.80

^245

^246

^247

247.56



0cm 5 10 15 20 25 30 35 40 45 50 55 60
BOTTOM

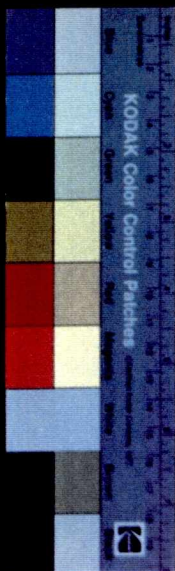


MOBIL YORK HARBOUR

C-1

TOP

BOX 88



244.80

^245

^246

^247

247.56



55 BOTTOM 60



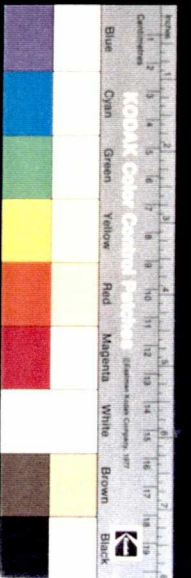
PETROL
ROBERTSON LTD.
 An Affiliate of the
 Robertson Group

MOBIL YORK HARBOUR

C-1

TOP

BOX 89



247.56

^248

^249

^250

250.51

0cm 5 10 15 20 25 30 35 40 45 50 55 60
 BOTTOM



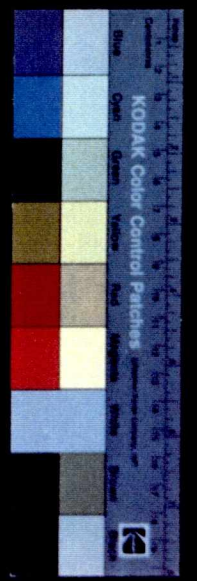
MOBIL YORK HARBOUR

C-1

TOP

BOX

89



247.56



^ 248



^ 249



^ 250



250.51



55 60 BOTTOM



PETROL
ROBERTSON LTD.
An Affiliate of the
Robertson Group

MOBIL YORK HARBOUR

C-1

TOP

BOX 90

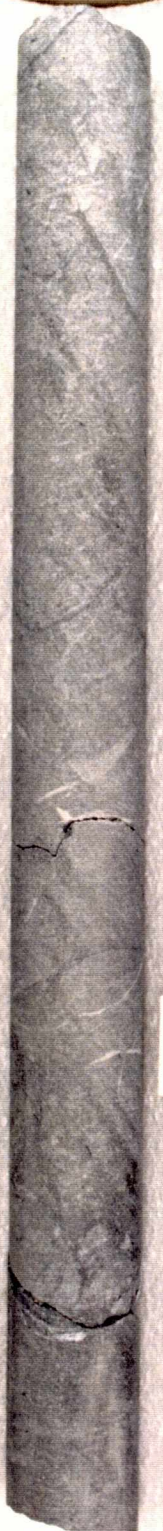
250.51



^251



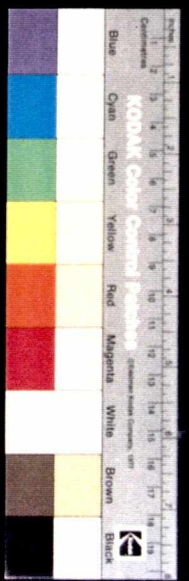
^252



^253



253.28



55 BOTTOM 60

MOBIL YORK HARBOUR

C-1

BOX 90

TOP

250.51

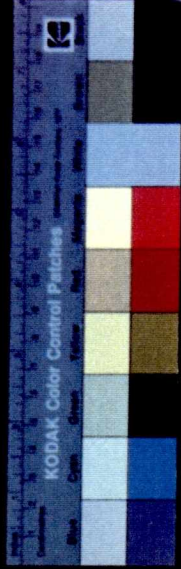
^251

^252

^253

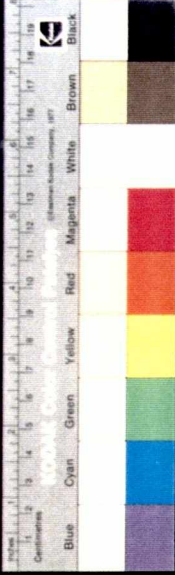
253.28

0cm 5 10 15 20 25 30 35 40 45 50 55 60
BOTTOM





MOBIL YORK HARBOUR
C-1



TOP

BOX 91

253.28



^254



^255



^256

256.11



0cm

5

10

15

20

25

30

35

40

45

50

55

60

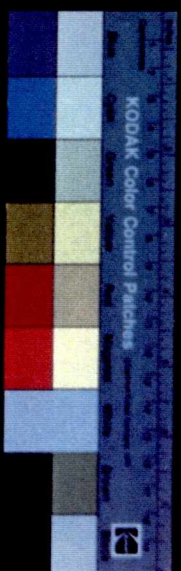
BOTTOM



MOBIL YORK HARBOUR
C-1

TOP

BOX 91



253.28



^254

^255

^256

256.11



55 BOTTOM 60



PETREL
ROBERTSON LTD.
 An Affiliate of the
 Robertson Group

MOBIL YORK HARBOUR

C-1

TOP

BOX 92

256.11



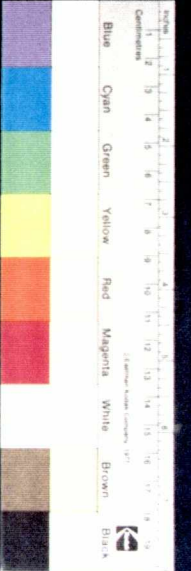
257



258



258.86



0cm 5 10 15 20 25 30 35 40 45 50 55 60
BOTTOM

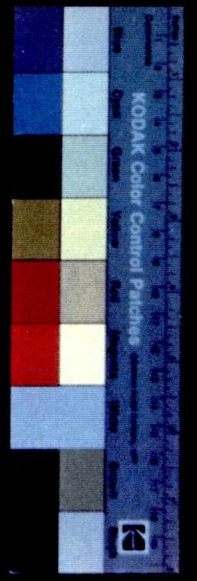


MOBIL YORK HARBOUR

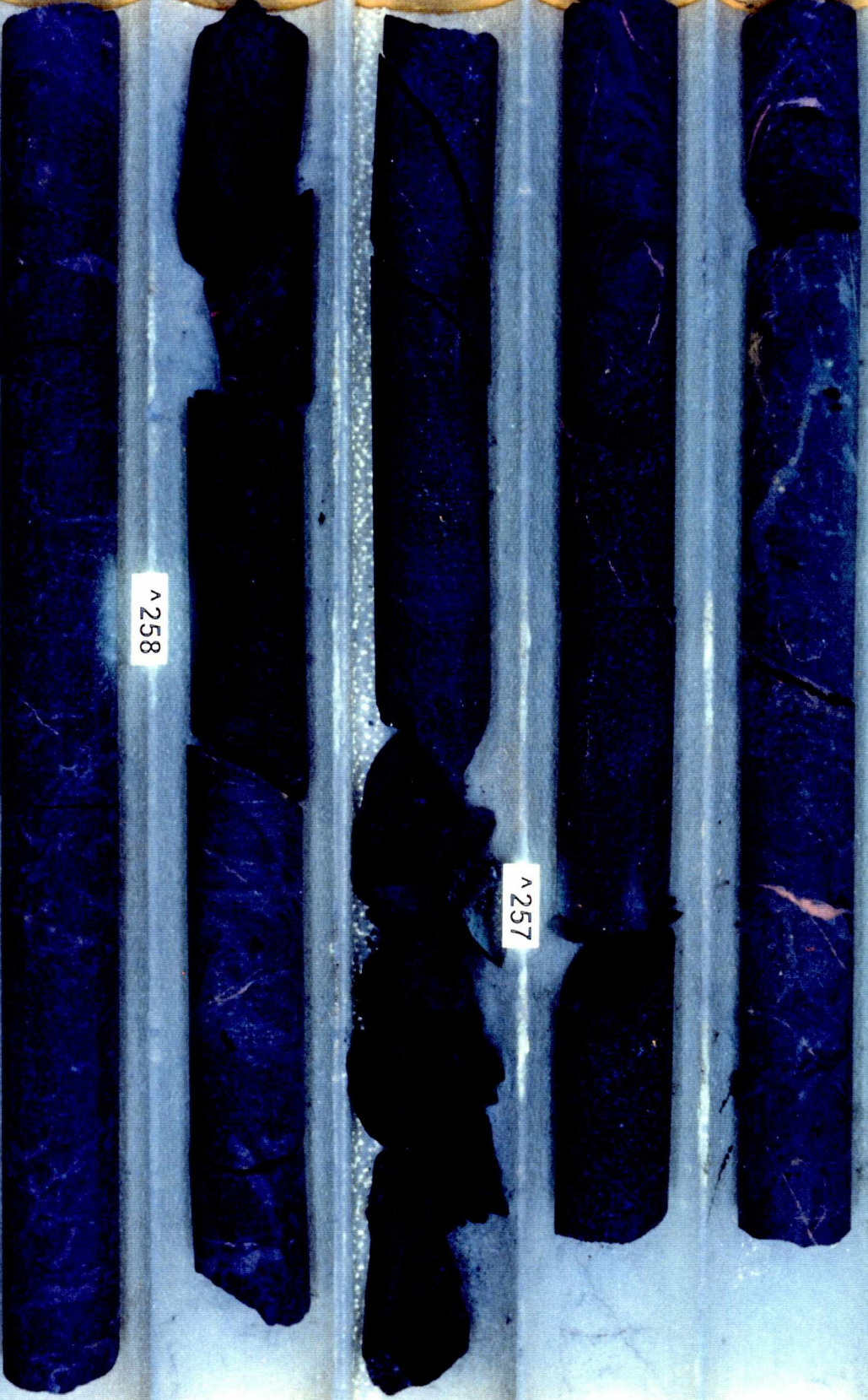
C-1

TOP

BOX 92



256.11



^ 258

^ 257

258.86



55 BOTTOM 60



PETREL
ROBERTSON LTD.
 An Affiliate of the
 Robertson Group

MOBIL YORK HARBOUR

C-1

TOP

BOX 93

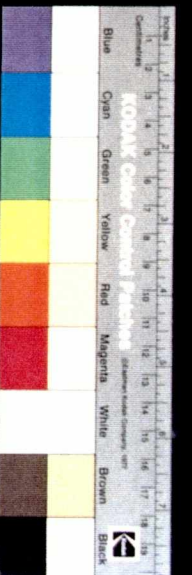
258.86

^259

^260

^261

261.57



0cm 5 10 15 20 25 30 35 40 45 50 55 60
BOTTOM



PETROL
ROBERTSON LTD.
A Division of
The Canadian National Oil Company

MOBIL YORK HARBOUR

C-1

TOP

BOX 93

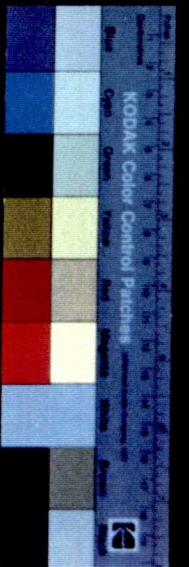
258.86

^ 259

^ 260

^ 261

261.57



0cm 5 10 15 20 25 30 35 40 45 50 55 60
BOTTOM



PETREL
ROBERTSON LTD.
 An Member of the
 Robertson Group

MOBIL YORK HARBOUR

C-1

TOP

BOX 94

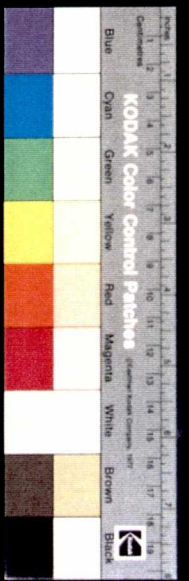
261.57

^262

^263

^264

264.70



0cm

5

10

15

20

25

30

35

40

45

50

55

60

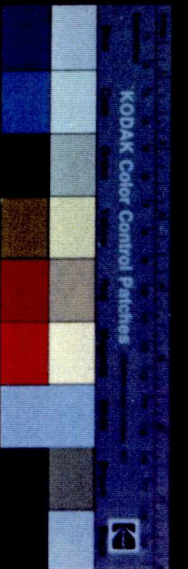
BOTTOM



MOBIL YORK HARBOUR
C-1

TOP

BOX 94



261.57

^ 262

^ 263

^ 264

264.70



BOTTOM



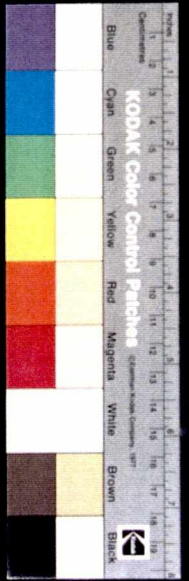
PETREL
ROBERTSON LTD.
 An Affiliate of the
 Robertson Group

MOBIL YORK HARBOUR

C-1

TOP

BOX 95



264.70



^265



^266



^261



267.72

0cm 5 10 15 20 25 30 35 40 45 50 55 60
 BOTTOM

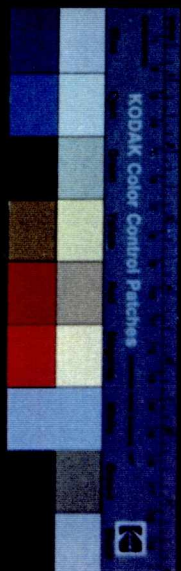


MOBIL YORK HARBOUR

C-1

TOP

BOX 95



264.70

^ 266

^ 265

^ 267

267.72

0cm 5 10 15 20 25 30 35 40 45 50 55 60

BOTTOM



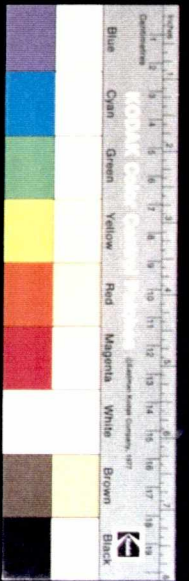
PETREL
ROBERTSON LTD.
 An Affiliate of the
 Robertson Group

MOBIL YORK HARBOUR

C-1

TOP

BOX 96



267.72

^268

^269

^270

270.71

0cm 5 10 15 20 25 30 35 40 45 50 55 60
 BOTTOM



MOBIL YORK HARBOUR

C-1

TOP

BOX 96



267.72

^268

^269

^270

270.71



55 60
BOTTOM

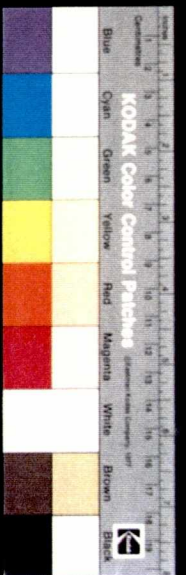


PETREL
ROBERTSON LTD.
 An Affiliate of the
 Robertson Group

MOBIL YORK HARBOUR
 # C-1

TOP

BOX 97



270.71

^271

^272

^273

273.45

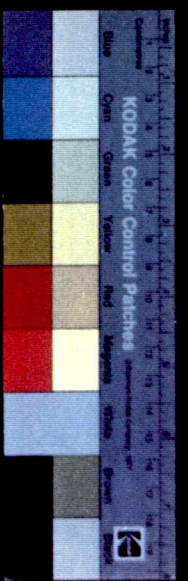
0cm 5 10 15 20 25 30 35 40 45 50 55 60
 BOTTOM



MOBIL YORK HARBOUR
C-1

TOP

BOX 97



270.71

^271

^272

^273

273.45



55
BOTTOM



PETREL
ROBERTSON LTD.
 An Affiliate of the
 Robertson Group

MOBIL YORK HARBOUR

C-1

TOP

BOX 98



273.45

^274

^275

^276

276.28





MOBIL YORK HARBOUR

C-1

TOP

BOX 98



273.45

^274

^275

^276

276.28



55 60
BOTTOM



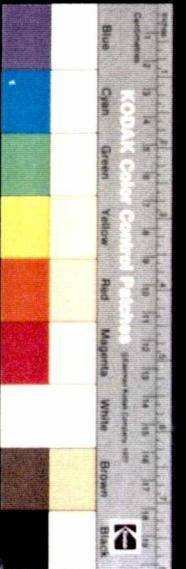
PETROL
ROBERTSON LTD.
An Affiliate of the
Robertson Group

MOBIL YORK HARBOUR

C-1

TOP

BOX 99



276.28

^277

^278

^279 279.09

0cm

5

10

15

20

25

30

35

40

45

50

55

60

BOTTOM



PEINEL
ROBERTSON LTD.
An Author of the
Prestige Club

MOBIL YORK HARBOUR

C-1

TOP

BOX 99



276.28

^277

^278

^279

279.09

0cm 5 10 15 20 25 30 35 40 45 50 55 60

BOTTOM



PETREL
ROBERTSON LTD.
An Affiliate of the
Robertson Group

MOBIL YORK HARBOUR

C-1

TOP

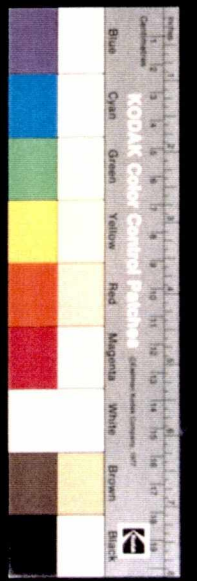
BOX 100

279.09

^281

^280

281.81



0cm 5 10 15 20 25 30 35 40 45 50 55 60
BOTTOM

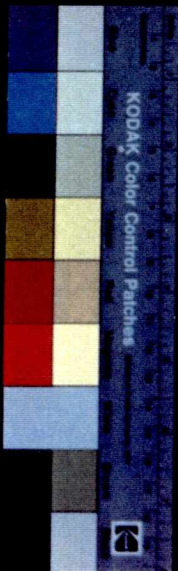


MOBIL YORK HARBOUR

C-1

TOP

BOX 100



279.09



^281

^280

281.81



55 60
BOTTOM



PETREL
ROBERTSON LTD.
 An Affiliate of the
 Robertson Group

MOBIL YORK HARBOUR
 # C-1

TOP

BOX 101

281.81



^282



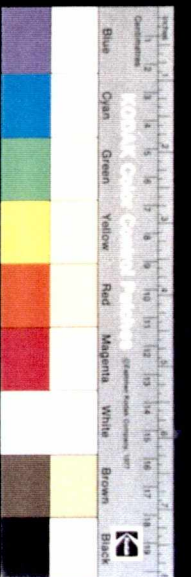
^283



^284



284.59



0cm 5 10 15 20 25 30 35 40 45 50 55 60
 BOTTOM

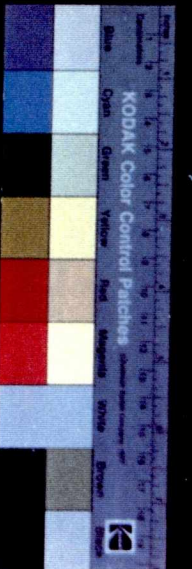


MOBIL YORK HARBOUR

C-1

TOP

BOX 101



281.81

^ 282

^ 283

^ 284

284.59



55 BOTTOM 60



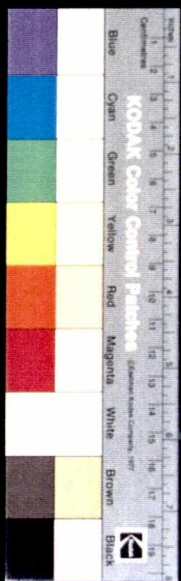
PETREL
ROBERTSON LTD.
 An Affiliate of the
 Robertson Group

MOBIL YORK HARBOUR

C-1

TOP

BOX 102



284.59

^285

^286

^287

287.51

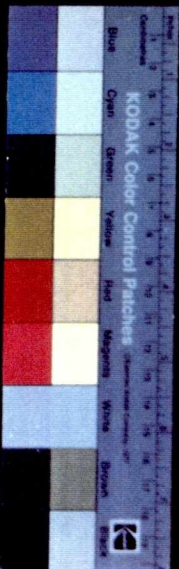




MOBIL YORK HARBOUR
C-1

TOP

BOX 102



284.59

^ 285

^ 286

^ 287

287.51

0cm 5 10 15 20 25 30 35 40 45 50 55 60
BOTTOM



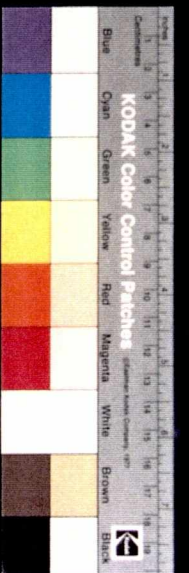
PETREL
ROBERTSON LTD.
 An Affiliate of the
 Robertson Group

MOBIL YORK HARBOUR

C-1

TOP

BOX 103



287.51

^288

^289

^290

290.19

Ocm 5 10 15 20 25 30 35 40 45 50 55 60
BOTTOM



MOBIL YORK HARBOUR

C-1

TOP

BOX 103



KODAK Color Control Patches



287.51

^288

^289

^290

290.19



0cm

5

10

15

20

25

30

35

40

45

50

55

60



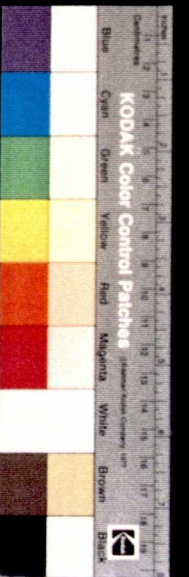
PETREL
ROBERTSON LTD.
 An Affiliate of the
 Robertson Group

MOBIL YORK HARBOUR

C-1

TOP

BOX 104



290.19



^291



^292



^293
293.04



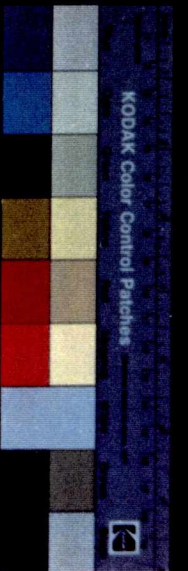
0cm | **5** | **10** | **15** | **20** | **25** | **30** | **35** | **40** | **45** | **50** | **55** | **60**
BOTTOM



MOBIL YORK HARBOUR
C-1

TOP

BOX 104



290.19



^ 291



^ 292



293.04
^ 293





PETREL
ROBERTSON LTD.
 An Affiliate of the
 Robertson Group

MOBIL YORK HARBOUR

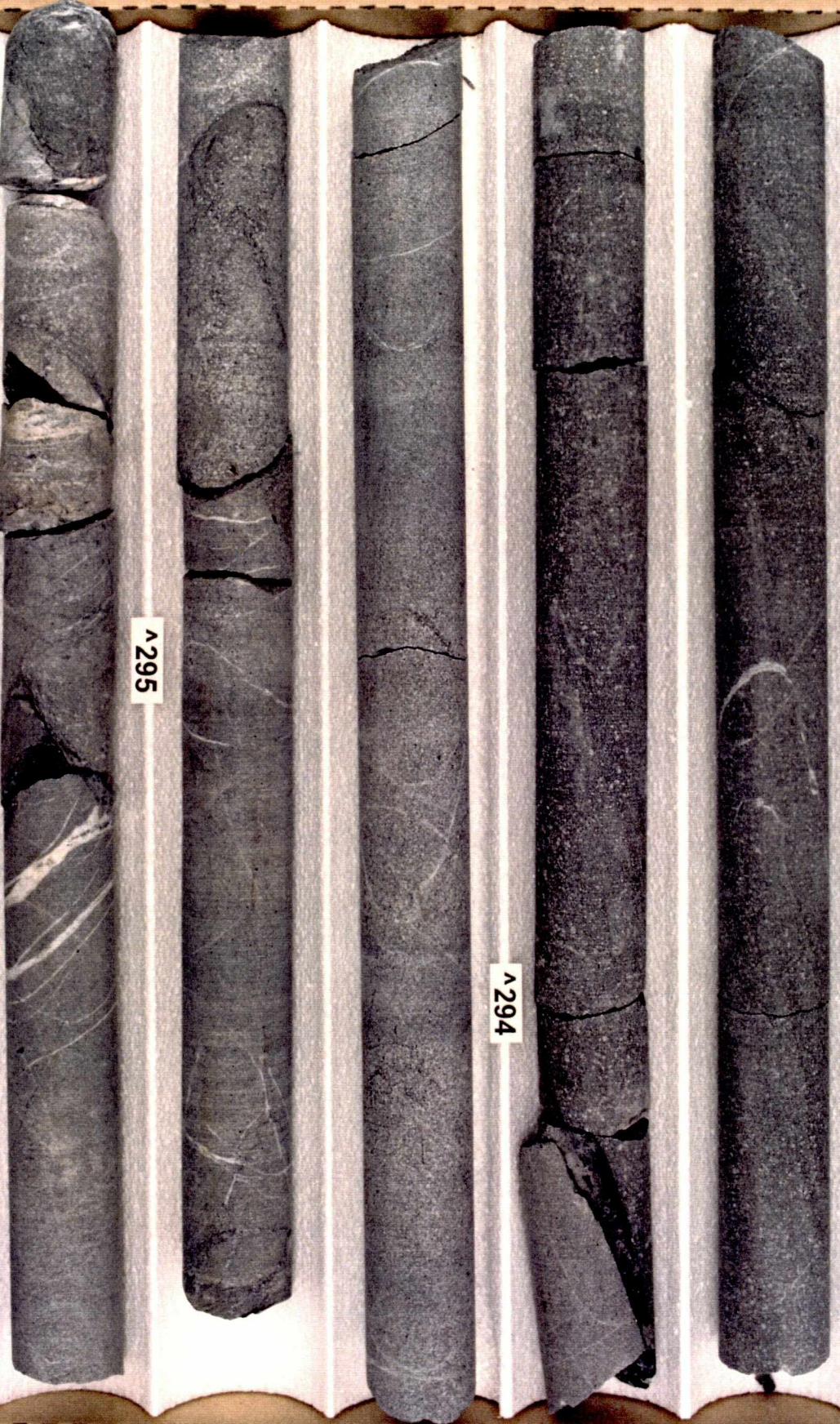
C-1

TOP

BOX

105

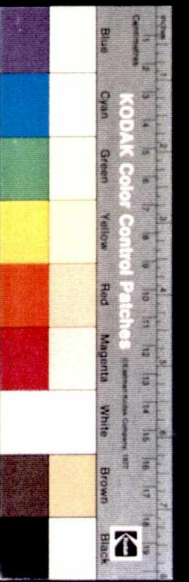
293.04



^295

^294

295.85



0cm 5 10 15 20 25 30 35 40 45 50 55 60

BOTTOM



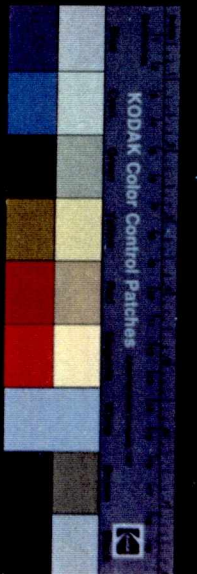
MOBIL YORK HARBOUR

C-1

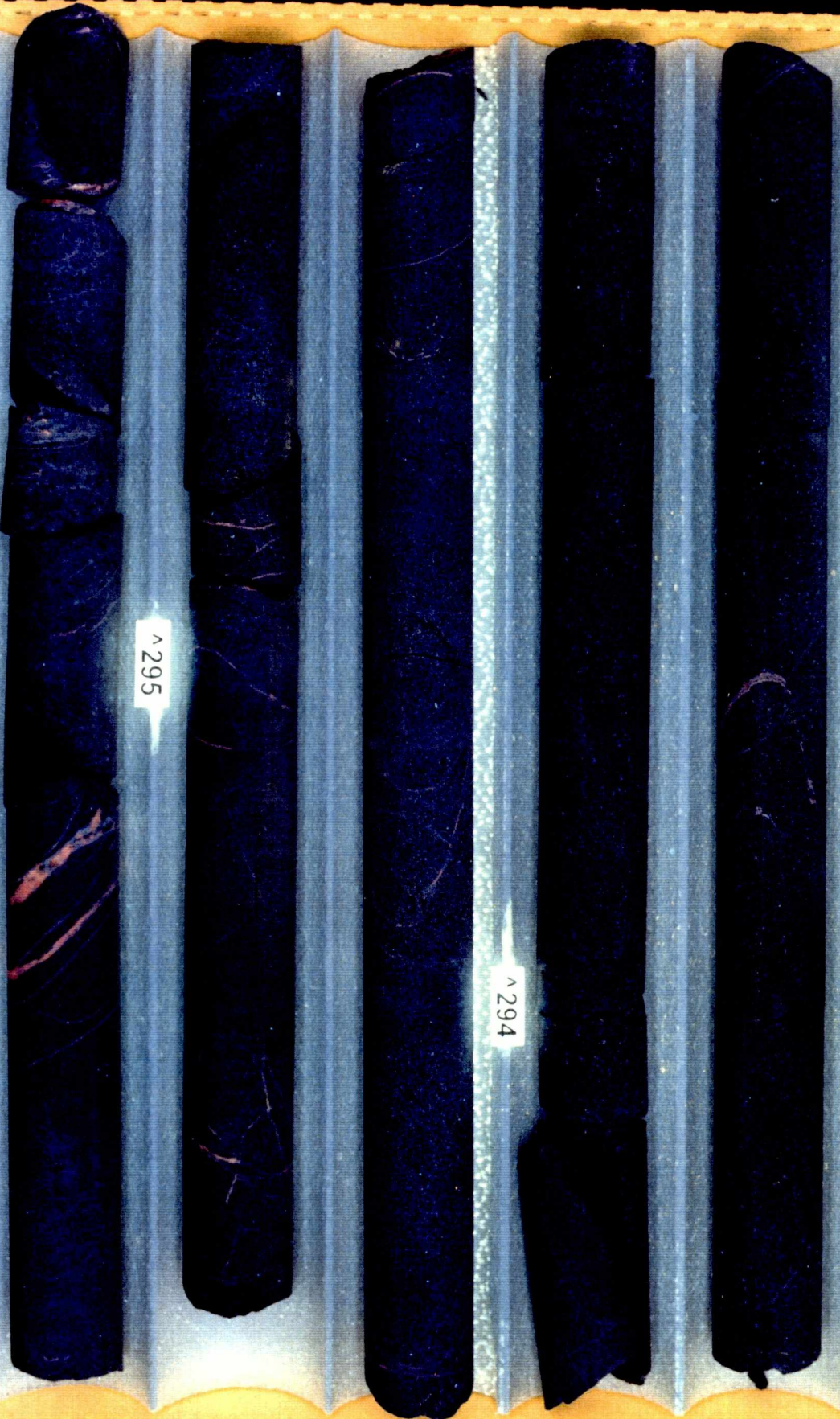
TOP

BOX

105



293.04



295.85



55 60
BOTTOM



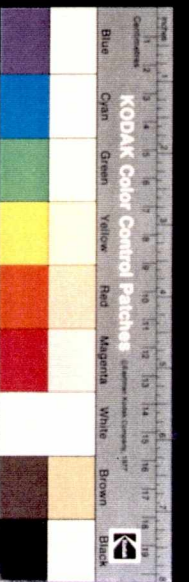
PETREL
ROBERTSON LTD.
 An Affiliate of the
 Robertson Group

MOBIL YORK HARBOUR

C-1

TOP

BOX 106



295.85

^296

^297

^298

298.60

0cm 5 10 15 20 25 30 35 40 45 50 55 60
BOTTOM



MOBIL YORK HARBOUR

C-1

TOP

BOX 106



295.85

^ 296

^ 297

^ 298

298.60



0cm

5

10

15

20

25

30

35

40

45

50

55

60

BOTTOM