

JUNE 2006

In June 2006, 5,094 new claims were staked; 4,802 on the Island and 292 in Labrador. This increased the staking total for 2006 to 21,966; 12,818 in Labrador and 9,148 on the Island. The number of claims in good standing at month's end was 103,060; 64,537 in Labrador and 38,523 on the Island.

Numbered crosses relate to the program locations on the accompanying maps. These maps also show the disposition of active mineral rights at month's end and lands not open for staking.

- 1-2 On June 1, **Monster Copper Resources Inc.** announced completion of the Phase 2, diamond-drilling program (see March 2 and April 21) on its 62-claim, Mustang Lake uranium property (✕1). The property is located in the Central Mineral Belt in east-central Labrador and is a 50:50 joint venture with **Santoy Resources Ltd.** The expanded diamond-drilling program totalled 2,700 m in 17 holes; assays are pending.

Monster Copper Resources Inc. also announced that fieldwork will commence later in June at its 1,080-claim, Bruce River uranium property (✕2). This property is located farther to the west in the Central Mineral Belt and also is a part of the 50:50 joint venture with Santoy Resources Ltd. The fieldwork will investigate radiometric anomalies defined by an airborne geophysical survey (see January 18) in areas having known uranium showings. Results of grab sampling at these showings were reported on January 18.

Santoy Resources Ltd. is the project operator for the joint venture. Both properties also have iron-oxide-copper-gold (IOCG) potential.

- ✕3 On June 3, **Invenio Minerals Inc.** staked 30 claims underlain by granitoid gneiss in the Neoproterozoic basement of western Labrador, possibly for uranium. Invenio Minerals Inc. now holds 287 in seven properties underlain by Archean basement in western Labrador (see May 17).

- ✕4 On June 5, **Commander Resources Ltd.** announced completion of the airborne geophysical survey (see April 18) over its Blue Hills, (✕4a), White Bear River (✕4b) and intervening Central Hermitage (✕4c) uranium properties in southern Newfoundland. The three contiguous properties comprise 1,820 claims.

Known uranium showings, such as the Main, Hawksnest, Muise and Chan showings on the Blue Hills property and the Doucette prospect and four other showings on the White Bear River property, show up in the radiometric data and numerous similar anomalies have been identified. Also, the Doucette prospect is associated with a 1.5-km-long magnetic anomaly within a weaker, strike-parallel, 8-km-long magnetic feature. In this area, uranium-bearing, biotite-rich horizons contain up to five percent magnetite whereas intercalated strata are non-magnetic.

NEWFOUNDLAND MINERAL EXPLORATION PROGRAMS

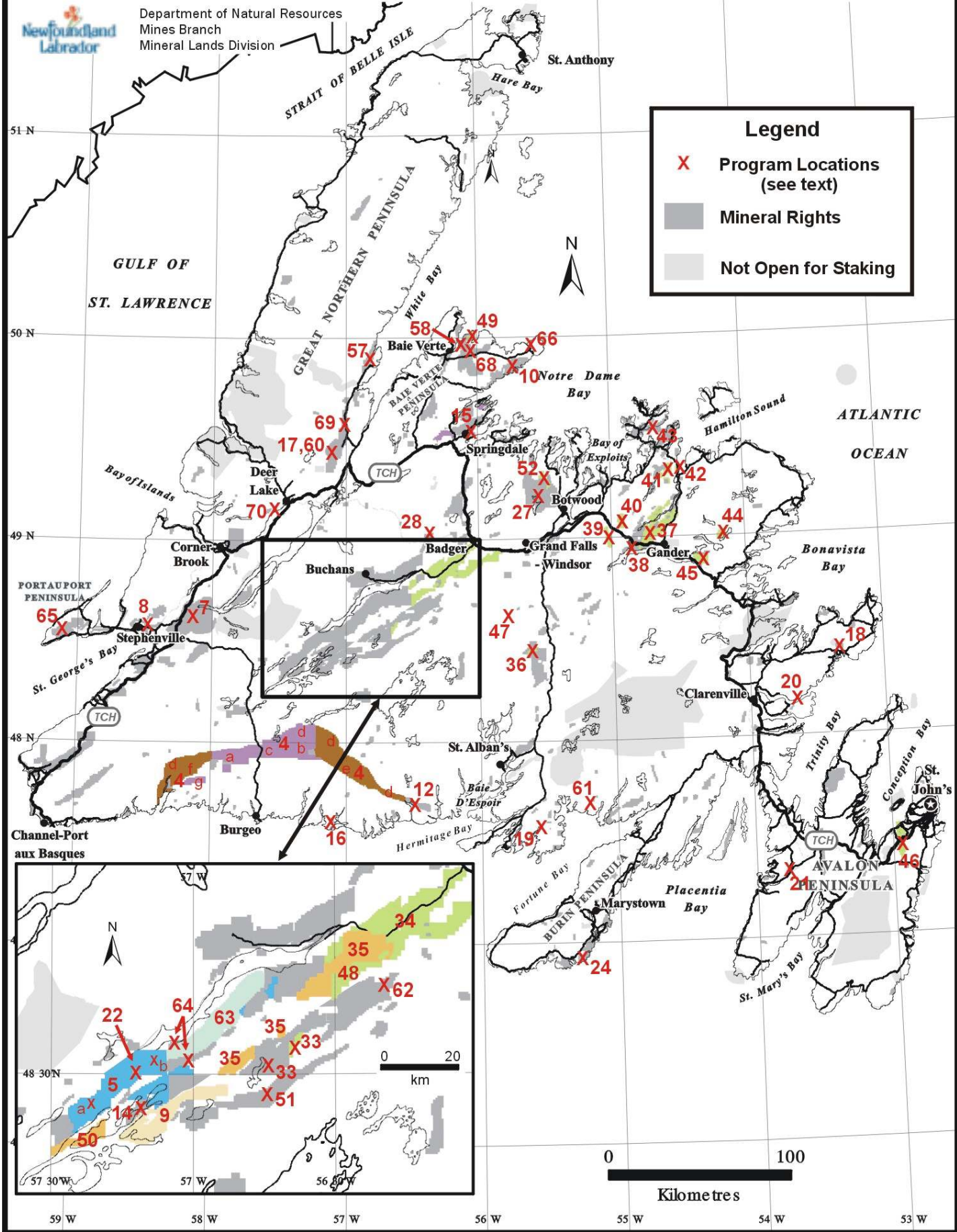
JUNE 2006



Department of Natural Resources
Mines Branch
Mineral Lands Division

Legend

- X Program Locations (see text)
- Mineral Rights
- Not Open for Staking

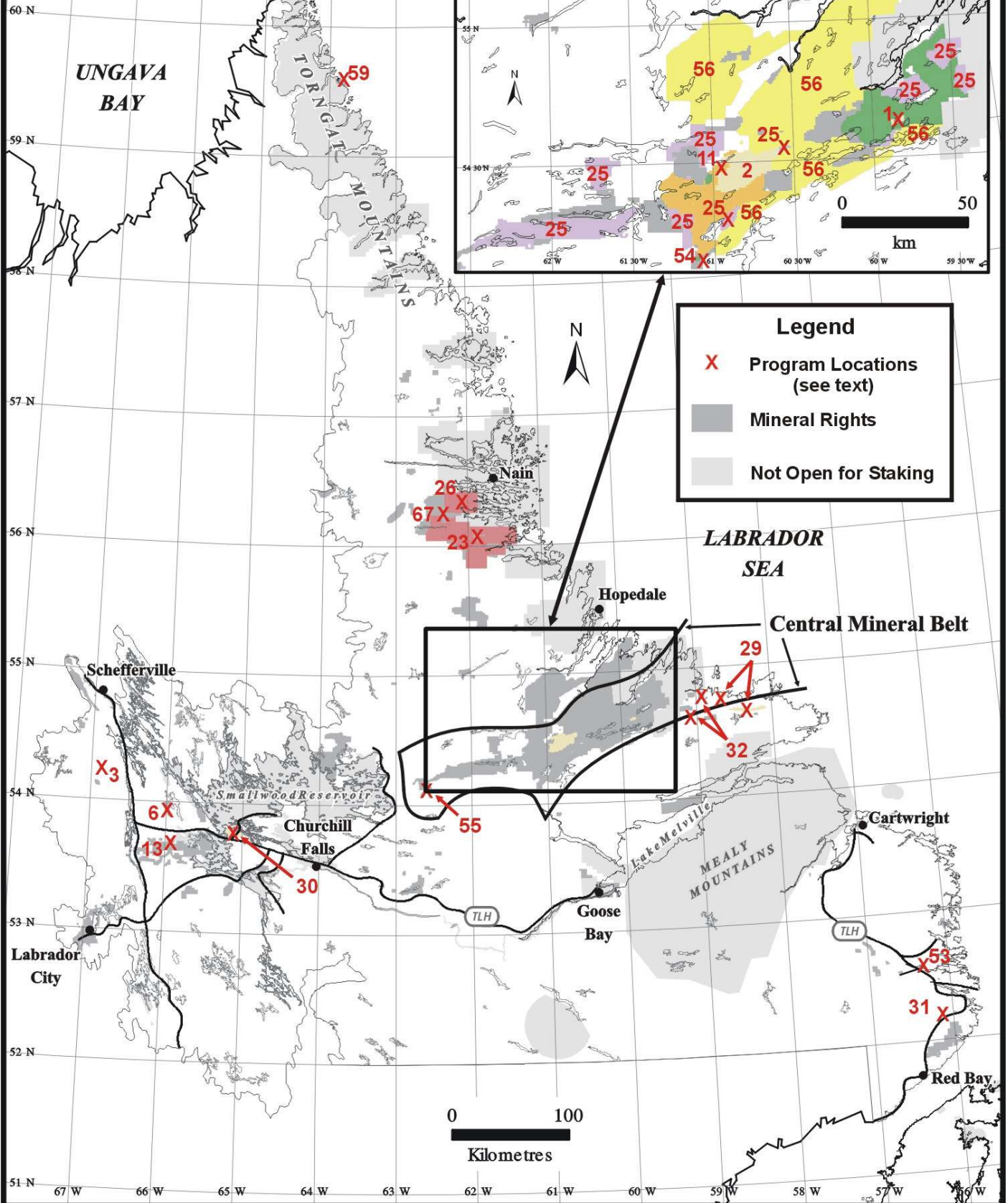


LABRADOR MINERAL EXPLORATION PROGRAMS

JUNE 2006



Department of Natural Resources
Mines Branch
Mineral Lands Division



In addition, the airborne geophysical survey located an electromagnetic anomaly within felsic volcanic rocks on the White Bear River property. Commander Resources Ltd. indicates that this anomaly may represent a volcanogenic-massive-sulphide target.

✖4 On June 5, 6 and 7, **Pathfinder Resources Ltd.** (1,674 claims) and Commander Resources Ltd. (737 claims) staked ground in six areas (✖4d) adjoining their Hermitage Flexure properties. Collectively, the 2,411 new claims have been termed the Cochrane Pond project, which Commander Resources Ltd. reports is a 50:50 joint venture between the two companies. The new staking covers almost all of the previously unstaked areas of Cambro-Ordovician clastic rocks in the Hermitage Flexure region.

✖5 On June 6, **Messina Minerals Inc.** announced that it had increased the 2006 exploration budget for its Tulks South base-metal property in west-central Newfoundland to \$6.5 million. The exploration program is now forecast to include about 43,000 m of diamond drilling, much of which will test the strike continuity of the Boomerang, Domino and Zinc Zone zinc-lead-copper-silver-gold, massive-sulphide horizons (✖5a). The “A” and “B” zones at the Tulks East base-metal prospect and the newly discovered Middle Tulks base-metal showing, located farther northeast within the Tulks South property (✖5b), will also be tested by diamond drilling during the 2006 program.

The Tulks South property (see April 19) comprises approximately 17,600 hectares.

✖6 On June 6, **Consolidated Abaddon Resources Inc.** announced the signing of the option agreement with **International Uranium Corporation** on its 176-claim, Sims Lake uranium property in western Labrador (see February 23). Pending fulfilment of the initial option for a 51% interest, International Uranium Corporation may acquire an additional 24% interest in the property by expending a further \$1 million on exploration by the end of 2009.

The 2006 field program (see March 29) will commence in mid July and will consist, initially, of a horizontal-loop, electromagnetic, ground geophysical survey of anomalies detected by an airborne geophysical survey (see October 13, 2005). A Phase 1, diamond-drilling program, consisting of about 650 m in three holes, is planned as follow up to the ground geophysical survey and will test areas where conductors intersect the unconformity between the underlying Labrador Trough metasediments and the overlying Sims Formation clastic rocks. Concurrently, International Uranium Corporation will complete geochemical surveys of uranium-bearing boulder trains.

7-8 On June 7, **N. Wayne Reid** staked 373 claims in two areas of western Newfoundland for uranium. Two hundred and one claims occur in four properties fringing the Caribou Brook property (✖7; see May 1). The remaining 172 claims are located farther west, near Stephenville (✖8). Both areas cover basement gneiss ± intrusive rocks or faulted contacts between Carboniferous clastic sediments and Cambro-Ordovician platform carbonates or Proterozoic basement gneiss.

- ✘9 On June 8, **Richmont Mines Inc.** and **Mountain Lake Resources Inc.** announced that Richmont Mines Inc. plans to proceed through 2006 with its option from Mountain Lake Resources Inc. on the 502-claim, Valentine Lake gold property in west-central Newfoundland (see May 31).

Results of metallurgical tests on 32 composite samples are pending. An independent consultant will then be contracted to provide a review of all project data and detailed plans for further exploration, including diamond drilling.

- ✘4b On June 8, **Commander Resources Ltd.** reported initial results of follow-up fieldwork on anomalies identified by processing data from the airborne radiometric survey (see April 18) on its Hermitage property (see above).

Prospecting using hand-held scintillometers located radiometric boulders at two previously unchecked anomalies in the White Bear River area to the southwest of the Doucette prospect. Readings of up to 800 counts per second (cps) were returned from anomaly HE-1 and boulders registering 18,500 cps and 20,000 cps were located at anomaly HE-2 in a cluster having a normal range of 2,000-4,000 cps. The boulders consist of impure quartzite having 10-15% iron-rich minerals. Float of siliceous felsic volcanic rocks containing 3-10% iron \pm copper sulphides was collected from the area of the electromagnetic anomaly (see above).

- ✘10 On June 9, **New Island Resources Inc.** reported results of Phase 1 diamond drilling on its 170-claim, Nugget Pond gold property on the Baie Verte Peninsula. The property is under option from **Richmont Mines Inc.** and contains the past-producing Nugget Pond gold mine (see November 9, 2005).

In Phase 1, four diamond drillholes, totalling 946.7 m, tested the Footwall Zone in the mafic volcanic rocks beneath the Nugget Pond horizon metasediments. Three of the diamond drillholes returned, respectively, gold values of 3.1 g/mt over 1.34 m, 2.1 g/mt over 4.7 m and 5.6 g/mt over 2.25 m. The fourth diamond drillhole included intersections assaying 5.6 g/mt gold over 1.6 m and 6.2 g/mt gold over 1.95 m, together with a higher grade intercept of 25.5 g/mt gold over 2.1 m that contained a 0.62-m interval grading 99.3 g/mt gold.

Testing of the Footwall North-South Zone (Phase II diamond drilling), to the northwest of the mine (see November 9, 2005), is underway.

- ✘11 On June 9, **Crosshair Exploration & Mining Corp.** announced that the Phase 2, diamond-drilling program was about to start on its 2,684-claim, Moran Lake uranium and IOCG property in the Central Mineral Belt in central Labrador. One diamond drillrig will be dedicated to continuing the resource upgrade at the Moran Upper "C" Zone (see December 8, 2005); a second diamond drillrig will test other targets, starting at Area 51 (formerly Area 5; see October 4, 2005).

Phase 1 diamond drilling (3,000 m in 19 holes) extended the Moran Upper “C” Zone over 675 m of strike and to a depth of 150 m (see April 5 and May 9). Phase 2 will include about 8,500 m of diamond drilling in 30-40 holes that will test the continuity of the Moran Upper “C” Zone along strike to the southwest and to depths of 300 m down dip. The Moran Upper “C” Zone resource will be recalculated at the end of Phase 2.

During Phase 2, additional diamond drilling will test eight high-priority targets identified from the summer 2005 airborne geophysical survey data (see November 23, 2005): namely - Area 51 (see March 16); the Moran “B” Zone, Areas 1-4 and Moran Heights (see February 9); and near Croteau Lake (see December 14, 2005). The Area 51 radiometric anomaly is of similar size and strength to that at the Moran “C” Zone.

- ✘12 On June 9, **N. Wayne Reid** staked 168 claims in southern Newfoundland for uranium. The claims cover the eastern end of a belt of siliciclastic rocks in the Hermitage Flexure (see ✘4e).
- ✘13 On June 13, **North Range Resources Ltd.** staked 28 claims in western Labrador over metasedimentary rocks of the Labrador Trough. The property may have base-metal and/or uranium potential.
- ✘14 On June 13, **Cornerstone Resources Inc.** staked an additional 15 claims along the northeastern margin of its Long lake base-metal property in west-central Newfoundland. The Long Lake property now contains 69 claims.
- ✘15 On June 13, **Dean Fraser** staked 19 claims covering the copper potential of mafic volcanic rocks on the Springdale Peninsula. Associate Garry B. Fraser holds a further 32 claims in this property.
- ✘16 On June 14, **Playfair Mining Ltd.** reported analytical results for the first six diamond drillholes of an eight-hole program on the Main (# 10) Vein at its 74-claim, Grey River tungsten property on Newfoundland’s south coast (see March 24 and April 6). The better results include tungsten trioxide (WO₃) values of 1.02% over 1.5 m, 1.7% over 1.5 m and 1.16% over 2.8 m. The assays confirm previous results, including those used to generate a historic resource estimate (see October 28, 2004).
- ✘17 On June 14, **Altius Resources Inc.** and optionee **JNR Resources Inc.** (see December 14, 2004) released an exploration update for their 437-claim, Rocky Brook uranium property, southwest of White Bay in western Newfoundland. The exploration program is designed to locate the bedrock source of two clusters of uranium-rich boulders.

In 2005, a reconnaissance diamond-drilling program (3,265 m in 78 holes) tested up-ice and in the vicinity of the boulder clusters. The best result from the 40-hole, diamond-drilling

program around the Wigwam Brook cluster is 0.014% U₃O₈ from a location 350 m up ice, and associated geochemical anomalies were identified for copper, cobalt and silver. The 38-hole, diamond-drilling program around the Birchy Hill Brook cluster delineated a ribbon-shaped radiometric anomaly in till that plunges up ice away from the boulder cluster. As well, 250 m up ice from the cluster, drillcore returned anomalous uranium, vanadium, tellurium and silver.

In 2006, exploration will consist of an airborne geophysical survey and diamond drilling. The 1,100-line-km, radiometric, magnetic and electromagnetic airborne survey will commence in late June. The diamond drilling will follow up on promising areas found in 2005 and also will test the Goose boulder cluster. The 3,000-m program will consist of 90-100 drillholes and is scheduled to commence in July.

- ✘18 On June 14, **Kat Exploration** staked 42 claims having copper potential near Port Rexton on the Bonavista Peninsula. Kat Exploration now holds 100 claims in three widely separated properties on the peninsula. The claims are a part of an agreement with **Atlas Mining Company** (see January 17).
- ✘19 On June 14, **Trinity Resources & Energy Ltd.** staked four claims on the Hermitage Peninsula in southern Newfoundland for dimension stone. The property includes the site of the past-producing, Old Bay granite quarry.
- ✘20 On June 14, **Hurley Slate Works Company Inc.** staked six claims on the Bonavista Peninsula covering the slate potential of the area surrounding the Nut Cove slate mine.
- ✘21 On June 14 and 19, **Trinity Resources & Energy Ltd.** staked 23 claims in three properties in the western part of the Avalon Peninsula for silica. Two of the properties (19 claims) are along strike in the immediate vicinity of the past-producing, Villa Marie silica mine.
- ✘22 On June 15, **Prominex Resources Corp.** issued an update on its 20-claim, Tulks Hill, base-metal property. The property is located in west-central Newfoundland and is subject to an option agreement with **Buchans River Ltd.** (see November 14, 2005). The entire property will be covered by a gravity ground geophysical survey. Diamond drilling of targets defined by an airborne geophysical survey (see March 6) will also commence later in June, initially, to confirm the presence and test for extensions of the known volcanogenic-massive-sulphide lenses on the property (see November 14, 2005) and, subsequently, to investigate the recently discovered anomaly (see March 6).

On June 19, Buchans River Ltd. announced that the gravity survey had commenced.

- ✘23 On June 15, **Celtic Minerals Ltd.** and **Cornerstone Resources Inc.** separately reported results from an airborne gravity and gradiometry geophysical survey of their Garland Lake

nickel–copper–cobalt project, located approximately 35 km south-southeast of Voisey’s Bay Mine in northern Labrador. The Garland Lake project consists of 210 claims, in two properties straddling Inco Limited’s Garland Lake property, that are under option from Cornerstone Resources Inc. (see January 10). The airborne survey was conducted by Inco Limited under a data-sharing agreement with Cornerstone Resources Inc. (see January 10).

The airborne survey detected 1.5 x 2.5 km and 2 x 3 km gravity highs, respectively, on the northern and southern Garland Lake properties. These gravity anomalies have been interpreted to potentially represent Nain Plutonic Suite troctolitic rocks at relatively shallow depths. Project operator, Celtic Minerals Ltd., recently completed a magnetotelluric, ground geophysical survey of the northern anomaly. A similar survey will be conducted on the southern anomaly after the spring break up.

- ✘23 On June 16, **Freeport Resources Inc.** announced that data was expected shortly from Inco Limited for that part of the airborne geophysical survey (see above) flown over its 23-claim, Notakwanon nickel–copper–cobalt property. The property is adjacent, to the west, to Inco Limited’s Garland Lake property and also abuts Cornerstone Resources Inc.’s northern Garland Lake claims. The airborne survey of the Notakwanon property was also conducted under a data-sharing agreement (see January 19).

The geophysical data will be evaluated at Ecole Polytechnique (Montreal). Ecole Polytechnique will incorporate data from an airborne magnetic and electromagnetic geophysical survey completed for Freeport Resources Inc. in 1996 and audio-magnetotelluric data collected by Inco Limited in 2000. Preliminary plans for follow-up fieldwork include a large-loop, electromagnetic survey and/or diamond-drill testing of a large anomaly.

- ✘24 On June 19, **Silver Spruce Resources Inc.** reported results of geochemical surveys on its 138-claim, Mother Lode gold property on the Burin Peninsula. Of 465 mainly B-horizon soil samples, collected from an area of known gold mineralization on the property, 29 samples are anomalous in gold (> 20 ppb) and 11 of these assayed > 100 ppb. The best results, 1,062 ppb gold and 3,931 ppb gold, are from unexplained single-site anomalies. Along trend of the area of mineralization, to the north and south, 13 of 132 lake-bottom-sediment samples are anomalous in gold and three samples returned values between 10 and 29 ppb gold.

Follow-up fieldwork (prospecting and mapping) is underway; trenching and additional mapping and sampling in the areas of gold mineralization and gold-in-soil anomalies are planned.

- ✘25 On June 19, **Silver Spruce Resources Inc.** also announced that Fugro Airborne Surveys would commence the airborne surveys (see March 30) of its central Labrador uranium properties around the end of June. About 16,000 line kilometres of airborne geophysics will be completed over a dozen properties throughout the Central Mineral Belt. Most of these properties are under option to **Universal Uranium Ltd.** (see January 18).

- ✘26 On June 19, **Inco Limited** announced results of diamond drilling at the Reid Brook deposit, located two kilometres west of its Ovoid deposit open pit mine in northern Labrador. The Reid Brook deposit is now interpreted to comprise upper and lower zones.

At the end of 2005 the Reid Brook Upper Zone contained an indicated resource of 3.4 million tonnes grading 2.67% nickel, 1.05% copper and 0.18% cobalt, together with an inferred resource of 4.9 million tonnes grading 2.64% nickel, 1.09% copper and 0.18% cobalt. Diamond drilling at the deposit in 2006 returned 2.37% nickel, 1.05% copper and 0.17% cobalt over 58 m from 50 m west of the deposit and 1.95% nickel, 0.52% copper and 0.13% cobalt over seven metres from 150 m farther west.

In 1996, the lower zone was intersected over six metres and graded 2.23% nickel, 0.73% copper and 0.17% cobalt. During the recent diamond drilling, the Reid Brook Lower Zone returned intersections of 2.62% nickel, 1.07% copper and 0.18% cobalt over 30 m and 2.24% nickel, 0.93% copper and 0.16% cobalt over 23 m. Inco Limited now reports a preliminary inferred resource of 1.0 - 1.2 million tonnes grading 1.8% to 2.4% nickel for the Reid Brook Lower Zone.

- ✘27 On June 21, **TLC Ventures Corp.** staked an additional 1,044 claims at the Point Leamington property in north-central Newfoundland. The initial 80-claim property surrounds a 262.9 hectare mining lease covering the Point Leamington zinc-copper-gold-silver deposit, formerly under option from **Rubicon Minerals Corporation**. The new claims are located to the south and east of the Point Leamington deposit and also partly enclose Rubicon Minerals Corporation's Lewis Lake base-metal property, ten kilometres east of the deposit. The new staking was a result of a review of ground and downhole geophysical data on the original property (see December 15, 2005).

- ✘28 On June 21, **William Mercer** staked an additional 15 claims at the Christopher property in central Newfoundland. William Mercer now holds 68 claims covering the base-metal and gold potential of mafic volcanic and clastic rocks on the property.

- 29-30 On June 21, **Monster Copper Resources Inc.** described its Aillik East and McKay Lake uranium projects in Labrador.

The 538-claim Aillik East project is located in east-central Labrador (✘29) and consists of two large properties staked by Monster Copper Resources Inc. (see May 11) and 37, mostly contiguous, claims acquired from **Paul McNeill**. The claims are underlain by Upper Aillik Group felsic volcanic and volcanoclastic rocks and fringing granitoid rock. The same rock groups host the Michelin uranium deposit (see Aurora Energy Resources Inc. at March 31) and the Mustang Lake uranium prospect (see ✘1 above).

In 1979, Placer Development and British Newfoundland Exploration Limited conducted a combined radiometric and very-low-frequency geophysical survey in the region. Some of the radiometric anomalies identified in the survey data from the Aillik East property coincide

with uranium-in-stream-sediment anomalies of up to 645 ppm. Grab sampling of the only anomaly to be followed up at that time returned up to 0.042% U₃O₈.

The 267-claim McKay Lake project forms a single property, staked by Monster Copper Resources Inc. (see March 9), and is located in western Labrador (X30). The property is underlain by Proterozoic granitoid rocks, mostly Trans-Labrador Batholith. Processing of provincial lake-sediment data has identified a residual uranium anomaly on the property. Monster Copper Resources Inc. interprets the McKay Lake property to have uranium and IOCG potential.

X31 On June 21, **Trinity Resources & Energy Ltd.** staked 14 claims in three properties in southeastern Labrador for silica and now holds 18 claims in four properties along the trend of the Big Pond quartz vein. Several silica showings occur within these claims in the southern part of the 25-km-long trend.

X32 On June 22, **Paul McNeill** staked 56 claims in ten properties in the Benedict Mountains in east-central Labrador. The claims cover the uranium potential of granitoid rocks.

33-52 On June 22, **Rubicon Minerals Corporation** announced that its plan to spin-off its Newfoundland operations into a separate, publicly traded company, Paragon Minerals Corporation, was scheduled to be completed in August 2006. As part of Paragon Minerals Corporation's initial capitalization, Altius Minerals Corporation will become a significant shareholder in the new company. A reciprocal option agreement will enable Paragon Minerals Corporation to earn a 100% interest in **Altius Resources Inc.**'s 249-claim, South Tally Pond base-metal property in central Newfoundland (X33).

In addition to its option on the South Tally Pond property, Paragon Minerals Corporation will assume Rubicon Minerals Corporation's interest in the properties listed below.

<u>Project or Property</u>	<u>Nfld. Location</u>	<u>Claims</u>
Gold properties optioned to Crosshair Exploration & Mining Corp.		
X34 – Golden Promise	Central	1,424
X35 – South Golden Promise	Central, west-central	994 in 3 areas
Gold property optioned to Meridian Gold Inc.		
X36 – Huxter-Lane	Central	54
Gold properties		
X37 – Joe Batts Linear (H-Pond)	Northeast	725
X38 – Golden Bullet	Northeast	46
X39 – Mount Peyton Linear	Northeast	106
X40 – Dan's Pond (Glenwood Break)	Northeast	87
X41 – Burnt Lake	Northeast	125 in 4 areas
X42 – Wings Point - Titan	Northeast	37
X43 – New World Island	Northeast	231
X44 – Wing Pond	Northeast	78
X45 – StarTrack	Northeast	158
X46 – Avalon	Avalon Peninsula	255
X47 – Great Rattling Brook	Central	9

✘48 – Selbys Pond	Central	203
✘49 – Mings Bight - Deer Cove	Baie Verte Peninsula	43
Base-metal property optioned to Crosshair Exploration & Mining Corp.		
✘50 – Victoria Lake	West-central	305
Base-metal property under option from A.S.K. Prospecting & Guiding Inc.		
✘51 – Lake Douglas	Central	298
Base-metal properties		
✘52 – Lewis Lake	North-central	70
✘28 – Christopher	Central	1

✘53 On June 22, **Brian Penney** (13 claims) and **Austin Penney** (5 claims) staked a property near Port Hope Simpson in southeast Labrador and on June 23, **Penney's Pitstop** staked 8 contiguous claims in three licences. The 27-claim property is underlain by Late Paleoproterozoic paragneiss and granitoid rocks.

✘7 On June 23, **Alexander T. Stares** (1,143 claims) and **James Richard Crocker** (14 claims) transferred the Caribou Brook uranium property (see May 1) in western Newfoundland to **Hot Rock Uranium Corp.**

54-55 On June 23, **James Burns** staked 89 claims in two properties in the Central Mineral Belt in central Labrador. In the east (✘54), 66 claims cover the uranium potential of Trans-Labrador granitoid rocks and unconformably overlying Seal Lake Group clastic rocks. In the west (✘55), 23 claims cover the uranium, thorium, niobium and beryllium potential of peralkaline felsic volcanic rocks.

56, 4 On June 23, **Bayswater Ventures Corp.** and **Pathfinder Resources Ltd.** announced that, following a period of due diligence, they will proceed by presenting their merger proposal (see April 19) to the shareholders for approval in early August. The new company would be one of the world's more significant junior exploration companies having uranium as its focus.

In Newfoundland and Labrador, Bayswater Ventures Corp. is exploring for uranium on a 15,960-claim property in east-central Labrador (✘56; see May 17 and 31) and Pathfinder Resources Ltd. has a 100% interest in 1,489 claims (see ✘4e, f) and a 50% interest in a further 2,411 claims (see ✘4d) along the Hermitage Flexure in southern Newfoundland, also for uranium.

✘57 On June 26, **Kermode Resources Ltd.** released an update on its 172-claim, Jackson's Arm gold property in White Bay. In late 2005, a diamond-drilling program defined a feeder zone to zones of gold mineralization at the Apsy Zone (see January 23). A 2006, Phase 4 diamond-drilling program is designed to delineate the geometry of the feeder zone and to test for similar zones.

To date, in Phases 1-3, 104 diamond drillholes have been completed on the Jackson's Arm property. Analytical results of core from these drillholes indicate the potential for a large-tonnage, low-grade, open-pit resource in granite, as well as zones of higher grade, sediment-hosted, gold mineralization.

- ✘58 On June 26, **Anaconda Gold Corp.** announced that procurement and construction of the plant for its Pine Cove gold mine on the Baie Verte Peninsula was ongoing. Construction of the gravity plant (see March 17) has been completed and it will be shipped to Newfoundland, from Australia, in August. Also, a two-stage crusher has been purchased and will be delivered in July and a down payment has been made on a leach plant.

- ✘59 On June 26, **Freeport Resources Inc.** issued a *Request for Proposals* to develop its Hutton garnet property at Iron Strand in northernmost Labrador. The Iron Strand beaches contain a high-grade garnet resource (see January 17, 2005). The garnet is sub-angular, well sorted, contains few inclusions and fractures and is suited for waterjet cutting or abrasion. Freeport Resources Inc. reports that: beneficiation of the feed material to produce a waterjet quality product is achievable with limited processing by spiral separation, induced-roll magnetic separation and sieving (Minerals Engineering Centre, Dalhousie University, Halifax); and successful waterjet tests on samples sent to companies in Canada and Europe has led to requests for larger scale testing.

- ✘4g On June 26, **Commander Resources Ltd.** staked 147 claims in a separate property (subsequently the Strickland property) to the southwest of the Blue Hills area (✘4a) in its Hermitage Project (see ✘4). The claims cover the uranium potential of Silurian felsic volcanic, hypabyssal and volcanoclastic rocks in the Hermitage West (✘4f) area.

- ✘60 On June 26, **Mike Stares** staked 136 claims covering the uranium potential of Carboniferous clastic rocks in the Deer Lake Basin of western Newfoundland.

- ✘33 On June 26, **Rubicon Minerals Corporation** staked 38 claims in central Newfoundland for base metals. The claims are adjacent to the northeast of Altius Resources Inc.'s South Tally Pond property (see above).

- ✘61 On June 27, **Nidon Enterprises Ltd.** staked one claim for molybdenum in southeast Newfoundland. The claim is underlain by the Ackley Granite Suite and covers the Ackley City molybdenum–zinc–copper prospect. Preliminary work by the American Cyanamid Company in the late 1930s generated a historic resource of 58,995 tonnes grading 0.38% molybdenum. Surficial sediment samples collected by the Newfoundland Government in 1981 also indicate uranium potential.

- ✘62 On June 27, **Volcanic Metals Exploration Inc.** announced a name change to **Energy Fuels Inc.** Volcanic Metals Exploration Inc. maintains 30 claims having base-metal potential at Burnt Pond in central Newfoundland.
- ✘63 On June 27, **Acadian Gold Corporation** announced the proposed friendly takeover of **Royal Roads Corp.** Royal Roads Corp. has earned a 100% interest in the 641-claim, Tulks North base-metal property in west-central Newfoundland from Norands Inc. (subject to certain back-in rights). During the earn-in period, exploration by Royal Roads Corp. generated a new resource estimate for the Daniel's Pond base-metal deposit on the Tulks North property (see January 5, 2005). Results of more recent diamond drilling were reported on March 23, 2005. The Tulks North property also contains base-metal prospects or showings at Daniel's Pond Extension, Roebuck Alteration Zone, the Parking Lot Showing, Black Jack Prospect, Sutherland's Pond Alteration Zone, Jack's Pond Alteration Zone, Bobby's Pond Alteration Zone, Bobby's Pond South and the Tim's Creek Area.
- ✘64 On June 27, **Mercator Geological Services Limited** staked 86 claims in three properties in west-central Newfoundland covering the base-metal and gold potential of mafic volcanic rocks in the Tulks belt. The Tulks belt contains Messina Minerals Inc.'s Tulks South property (see February 2) and Royal Roads Corp.'s Tulks North property (see ✘63).
- ✘65 On June 27, **AggMapR Inc.** staked an additional ten claims in two properties contiguous with its claims on the Port au Port Peninsula, western Newfoundland. AggMapR Inc. now holds 315 claims in this property covering limestone and dolomite potential.
- ✘66 On June 27, **Trinity Resources & Energy Ltd.** staked three claims on the Baie Verte Peninsula for silica. The claims occur along strike in the immediate vicinity of several outcrops of the La Scie quartz vein.
- ✘67 On June 28, **Celtic Minerals Ltd.** reported results of detailed geophysical surveys on the Mak Lake target on its Voisey's Bay West nickel property in northern Labrador. The Mak Lake target is one of four targets detected by a ground magnetotelluric survey (see January 18) at a 500-m line spacing. The 2-km-long magnetotelluric anomaly is interpreted to represent a gently north-dipping conductor ranging from 1,000 m depth at its western end to 350 m depth at the eastern limits of the survey.

Infill magnetotellurics, at 200-300 m spacing, confirmed the continuity of, and locally strengthened, the anomaly over a 1.5 km length. The eastern 500 m of the anomaly is offset and may be a separate conductor. As well, the 1.5-km-long conductor was detected by the detailed ground gravity and magnetic surveys. A UTEM survey was completed over the eastern end of the Mak Lake conductor, over the ice on Mak Lake and over the Red Dog Fault magnetotelluric anomaly. A coincident magnetotelluric and UTEM anomaly was outlined beneath Makhavinekh Lake.

In the summer of 2006, **Inco Limited** will conduct an airborne gravity gradiometry survey over the Voisey's Bay West property for Celtic Minerals Ltd. under a cost- and data-sharing agreement (see January 18). In addition, diamond drilling of target areas will commence shortly.

The Voisey's Bay West property comprises 760 claims. Celtic Minerals Ltd. wholly owns 309 claims and has a 50% interest in 451 claims under a joint venture with **Merrex Gold Inc.**

- ✘4 On June 28, **Commander Resources Ltd.** announced that follow-up fieldwork (see June 8) was continuing on airborne geophysical anomalies in the Central Hermitage area (✘4a,b,c) of its Hermitage uranium project in southern Newfoundland. Processing of the airborne data on **Pathfinder Resources Ltd.**'s adjacent Hermitage East (✘4e) and Hermitage West (✘4f) properties is scheduled for completion in mid-July.

- ✘25 On June 29, **Universal Uranium Ltd.** announced that the 10,000-line-km airborne radiometric and magnetic surveys (see March 30) had commenced on its 4,963-claim option from **Silver Spruce Resources Inc.** The option covers the uranium and IOCG potential of a dozen properties throughout the Central Mineral Belt in Labrador.

- ✘68 On June 29, the **Government of Newfoundland and Labrador** issued a *Call for Proposals* to explore and develop the gold deposit on the 34.898-hectare Stog'er Tight mining lease on the Baie Verte Peninsula.

- ✘10 On June 30, **New Island Resources Inc.** reported results of Phase II diamond drilling on its Nugget Pond gold property (see above).

In Phase II, eight diamond drillholes, totalling 1,315 m, tested the Footwall North-South Zone. The Footwall North-South Zone strikes northwest and dips steeply southwest and has been traced over a distance of 100 m to within 50 m of former mine workings. The zone is hosted by mafic volcanic rocks, is 5 m wide and contains abundant disseminated pyrite. Gold values are highly variable, occurring in narrow intersections within the broader zone. The better results include 4.1 g/mt gold over 1.7 m, 10.7 g/mt gold over 0.45 m and 29.2 g/mt over 0.85 m.

Diamond drilling will continue on the Footwall North-South Zone in July. Induced-polarization geophysical surveys will be conducted on similar structures elsewhere within the property.

- ✘56 On June 30, **Bayswater Ventures Corp.** announced that the airborne geophysical survey (see March 6) had commenced on its 16,012-claim (includes 52 claims staked by **Dean Fraser** on May 15), east-central Labrador uranium property. The survey will utilize two helicopter-borne set-ups (cf. March 6) - one will operate at a line spacing of 100 m within

the Central Mineral Belt; the other will operate at a line spacing of 200 m in the area to the north of the belt - in all 35,000 to 38,000 line km of geophysical data.

Prospecting of targets identified during Bayswater Ventures Corp.'s ongoing compilations of data on the property (see March 23 and May 17) will commence in early July. Prospecting of targets generated by the current airborne survey will occur as data become available. The field programs are designed to delineate targets for diamond drilling in the fall of 2006.

- 69-70 On June 30, **Spruce Ridge Resources Ltd.** staked 62 claims in western Newfoundland. Thirty of the claims (✕69) are located at the southern end of its now 172-claim, Turners Ridge base-metal (lead) property (see March 29, 2005). The remaining 32 claims (✕70) cover the uranium potential of clastic and carbonate rocks near Deer Lake: these rocks comprise rhythmic lacustrine sediments of the Carboniferous Deer Lake Basin that commonly contain decimetre-thick zones of anomalous radioactivity.
- ✕54 On June 30, **Ruza Resources Ltd.** staked 39 claims covering the uranium potential of Trans-Labrador Batholith granitoid rocks in the Central Mineral Belt in central Labrador.