

CORE-STORAGE PROGRAM, 2005

A. Harris and S. Cochrane
Mineral Lands Division, Mines Branch

ABSTRACT

The Department of Natural Resources currently operates six core-storage libraries located at St. John's, Springdale, Buchans, Baie Verte, Pasadena and Goose Bay. Currently, these facilities house in excess of one million metres of core samples collected from mineral exploration projects in Newfoundland and Labrador. This report summarizes activities during 2005 and presents an overview of the operations of the core-storage program.

2005 FIELD ACTIVITIES

A total of 15 088 m of new core samples (Table 1) were added to our core collection during 2004/2005, bringing the total core-sample collection in storage up to 1 107 003 m.

Table 1. New core material added to the core-storage archives

Company	Property	Length (m)
Altius Resources Inc.	Moosehead Property	10 121
Altius Resources Inc.	Chiouk Brook	1 006
Linear Resources Ltd.	Reid Option	1 594
Buchans River Ltd.	Buchans	833
Candente Resources	Duder Lake	770
Candente Resources	Paul's Pond	764

The Department did not conduct core-collection activities during 2005 and most of the core samples listed below were delivered by the mineral exploration companies with the exception of the Linear Resources and Candente Resources core samples.

All core samples in Department core libraries are available for inspection by interested parties and a catalogue (in paper or digital format) of all core samples in storage is available by request from the Department of Natural Resources.

NEW DEVELOPMENTS

All core libraries in insular Newfoundland, except the Buchans core library, are filled to capacity and new core samples are not being accepted at these facilities. Any company wishing to claim assessment credits for delivering core

samples to Department core libraries (in insular Newfoundland) must deliver the samples to the Buchans core library.

Core-reduction guidelines are being drafted for use as a template to reduce the size of the core collections in the facilities that are now filled to capacity. The start of core-reduction activities is not anticipated for a year or more, pending consultation with the client group and completion of a pilot study.

USING THE CORE LIBRARIES

Any person who wishes to visit either of the core libraries (Figure 1) for the purpose of examining core samples should provide advance notice to the person in charge of the particular core library. The Pasadena core library is staffed on a full-time basis by one employee and is open to the public during regular government office hours. Advance notice of one day is required in order to properly accommodate visitors to the Pasadena core library. Visitors to the St. John's core library should also provide advance notice of one day and advance notice of one week is required to properly accommodate visitors to the Goose Bay core library since it is not staffed on a full time basis. Visits to the Springdale, Buchans and Baie Verte core libraries require a minimum notice of two days.

The indexing system for all core samples in the core libraries is based on the National Topographic System (NTS). Each drillhole, for which there are core samples in storage, is assigned a unique master number based on the 1:50 000-scale topographic sheet on which the drillhole collar is located. A digital database containing all relevant data available for core samples in storage can now be accessed on the Department website. This database has replaced the

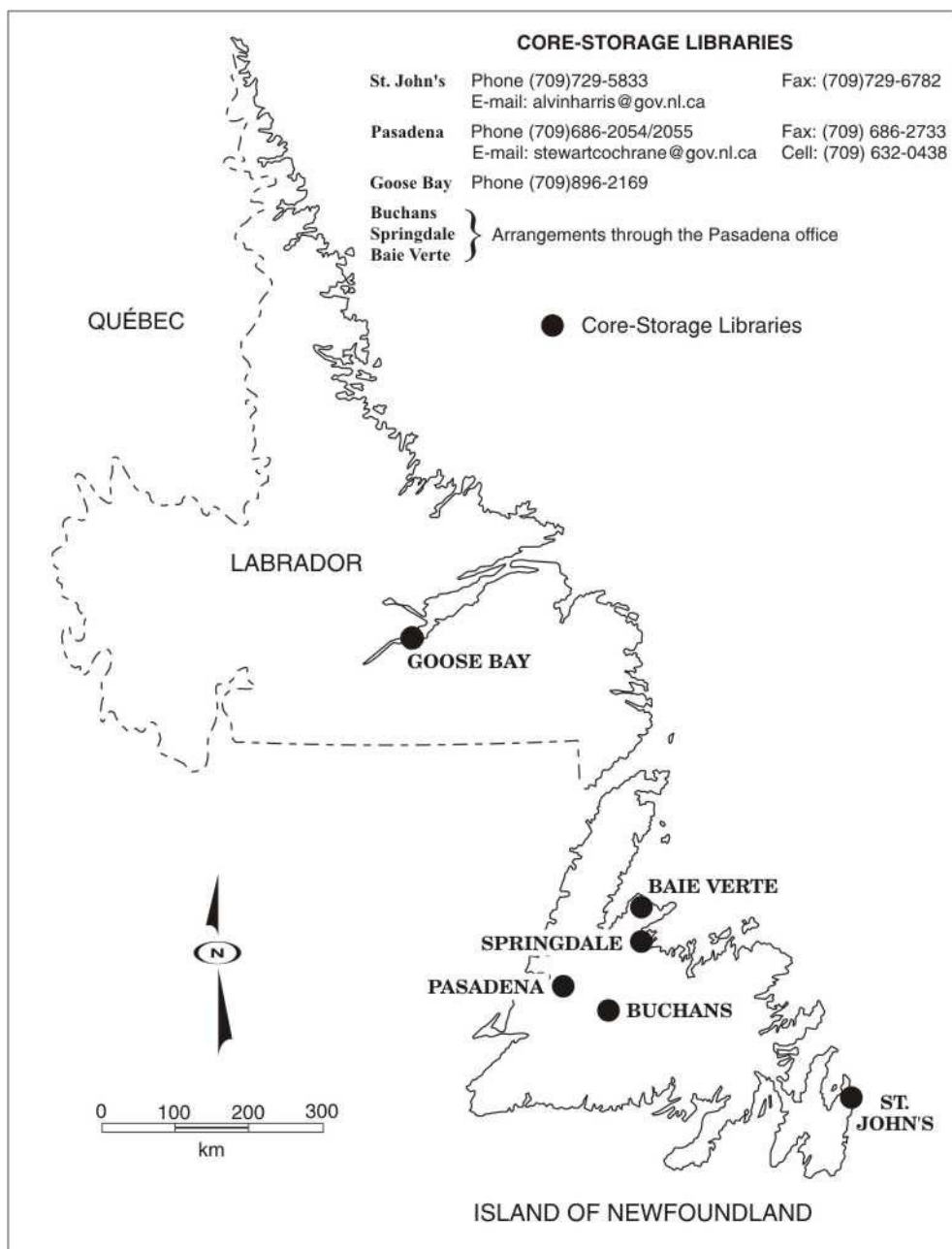


Figure 1. Core libraries in Newfoundland and Labrador.

manual index card and map file system previously used in the core libraries.

Each core library contains a file of all available data, i.e., drillhole logs, cross sections, and assay results for all core samples stored. The company drillhole number and the assessment file in which the drilling was reported are referenced in the digital drillhole database.

All six core libraries have core examination areas which contain or share rock-cutting equipment, a core splitter and a stereomicroscope with another core library.

The taking of samples is generally permitted where doing so does not destroy any lithological sequence or leave gaps in the drillhole record. The smallest size sample that is useful is taken and the minimum amount of core that must be left in each core box is a one quarter size split of the original core. The user must complete a 'Request to Sample Form' (Appendix I) before sampling is permitted. All core samples, pulps, powders, thin sections, and any other materials generated from the core samples must be returned (along with a copy of the results of any work done on the samples) to the core library within one year from the date the samples were taken. The user shall be responsible for costs incurred in returning samples to the core library.

SEARCHING THE DRILLHOLE DATABASE

The drillhole database is now accessible on the Department's website through the *Geoscience Resource Atlas/Mineral Lands* layer, Figure 2. This database contains information on all drillcore in storage, currently 8122 drillholes. The database can be searched by using the "Drill Core Selection Form", Figure 3,

accessed by selecting the query icon on the toolbar, i.e.,



The results of the search are then displayed at the bottom of the screen, below the map and are highlighted on the map.

PLANS FOR 2006

Plans for 2006 include continuation of the core-collection effort to obtain representative core samples (complete drillholes) from drilling projects in Labrador and ongoing core collection in insular Newfoundland, as required.

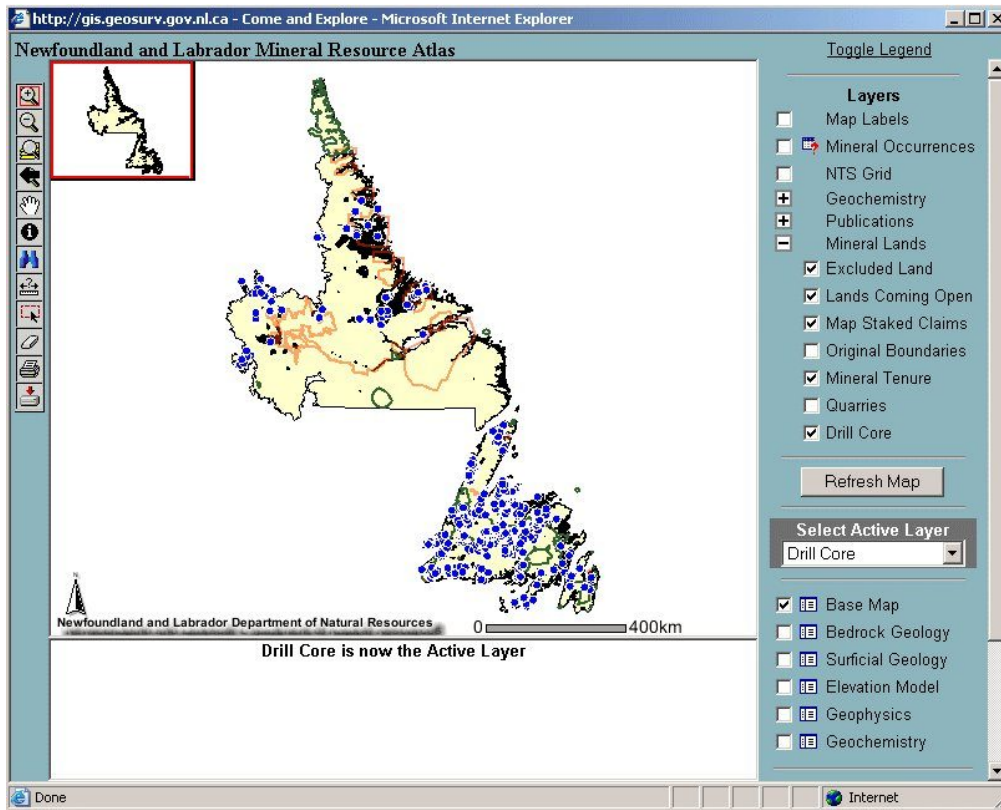


Figure 2. Mineral Resource Atlas. Mineral Lands/Drillcore Layer.

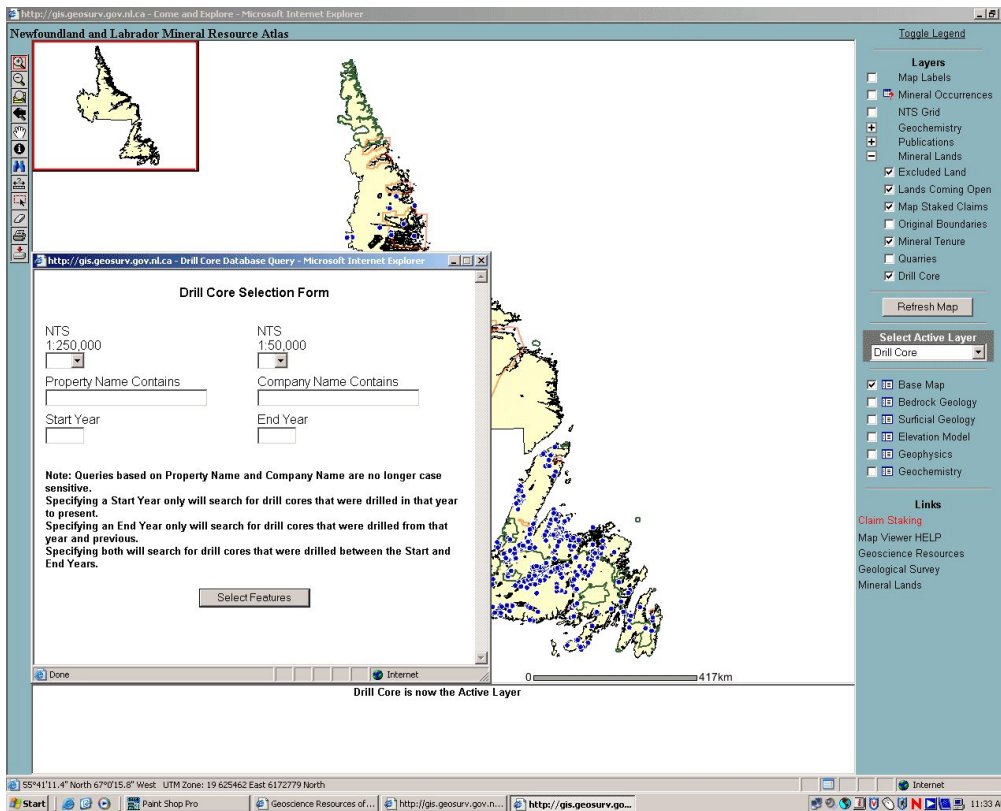


Figure 3. Drillcore Selection Form.

A draft of the core-reduction guidelines will be circulated to the client group during 2006 for initial feedback.

Updates to the drillhole database will be made on a regular basis as new core is added to the core libraries, and work continues on summarization of all available assay data for core samples in storage.

Anyone requiring further information on the core-storage program or wishing to visit either of the core libraries should contact the staff listed below.

Project Geologist – Core-Storage Unit (Alvin Harris)
Department of Natural Resources
P.O. Box 8700

St. John's, Newfoundland
A1C 5T7
Phone: (709) 729-5833; Fax: (709) 729-6782
E-mail: alvinharris@gov.nl.ca

Core-Storage Geologist (Pasadena) Stewart Cochrane
Department of Natural Resources
Dr. A.K. Snelgrove Core Library
Pasadena, Newfoundland
A0L 1K0
Phone: (709) 686-2054, 2055; Fax: (709) 686-2733
Cell: (709) 632-0438
E-mail: stewartcochrane@gov.nl.ca

APPENDIX 1
CORE-STORAGE UNIT
Request to Sample Core

USER NAME: _____

COMPANY/AFFILIATION: _____

ADDRESS: _____

NATURE OF PROJECT: _____

WORK TO BE CONDUCTED
ON SAMPLES: _____

DRILLHOLE NOS: _____

SAMPLE INTERVALS: _____

SIZE AND SHAPE OF SAMPLES: _____

REQUEST DENIED/GRANTED (REASON): _____

DATE: _____ CORE-STORAGE GEOLOGIST: _____

NOTE: All core samples and/or pulps, powders and thin sections, etc., generated from core samples must be returned to the core library at the end of a previously specified period. A copy of all assays and other analytical work conducted on the samples is also required at the end of this period.

RETURN DATE: _____ SIGNATURE: _____