

DOCUMENTS AND DATABASES AT THE GEOSCIENCE PUBLICATIONS AND INFORMATION SECTION

C. Patey and C. Saunders
 Geoscience Publications and Information Section

DOCUMENTS AVAILABLE ONLINE

In October 2006, over 5000 mineral-exploration assessment documents contained in the Geological Survey's Geofiles collection were made available online as .pdf files. These files were created in the initial phase of a joint project of the Geological Survey and the Office of the Chief Information Officer (OCIO). Documents were scanned and .pdf files were bookmarked to provide easier access to all sections (including maps) of the documents represented in the .pdf files.

There are currently over 8800 mineral-exploration reports in the Geofiles collection. Over 5000 of these are now completely, or partially, accessible online. Figures 1a and 1b shows sample .pdf images. In the initial phase (*i.e.*, fall 2005 to spring 2006), documents were scanned as black-and-white images from microfiche. Documents with more than 25 percent greyscale or coloured material were not scanned, because such material would be poorly represented as black-and-white images.

The OCIO, which financed the initial phase of the scanning project, will invite proposals from scanning-service

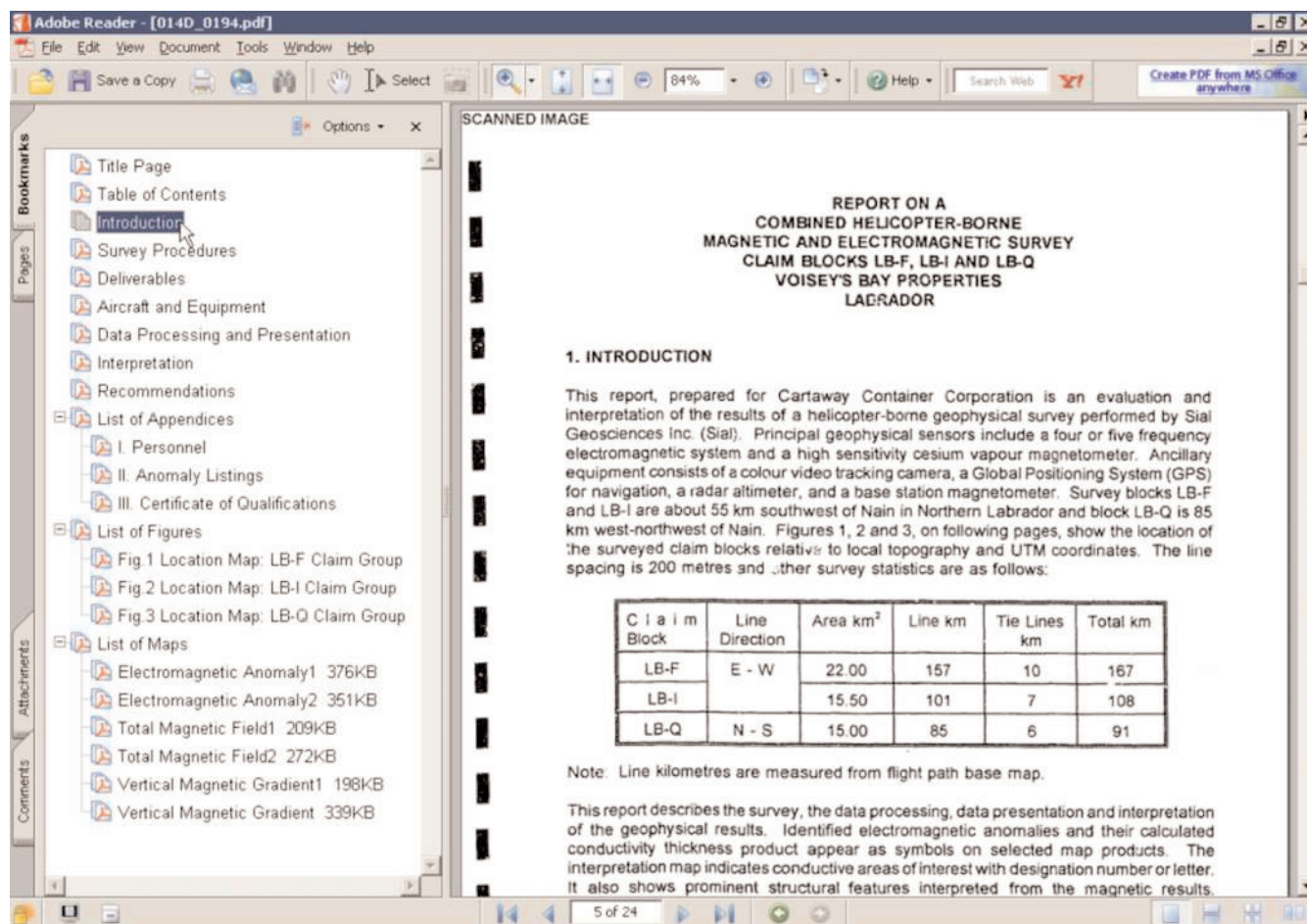


Figure 1a. Sample scanned document with bookmarks added. Note: size of external files is given in bookmarks for maps.

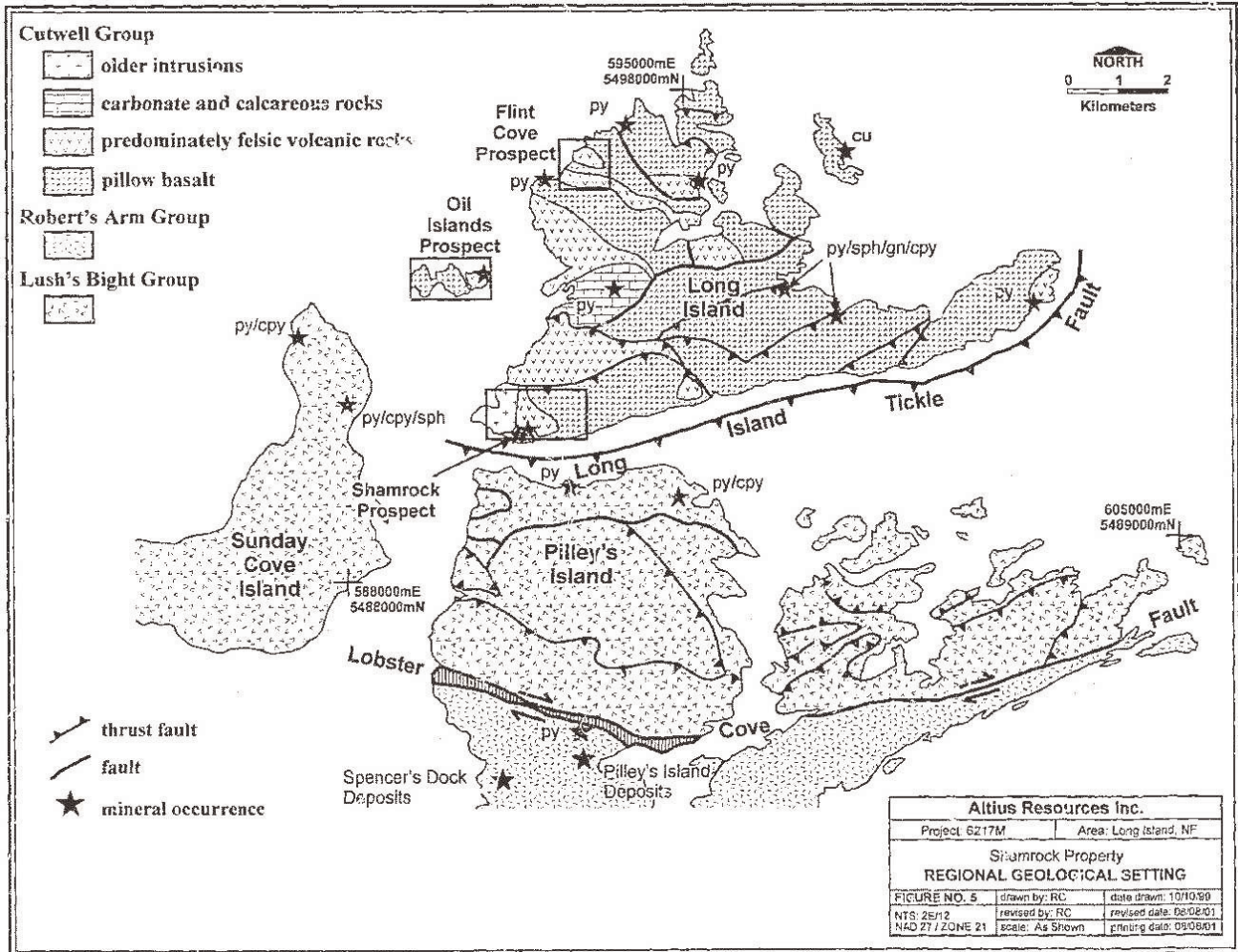


Figure 1b. Sample scanned page-sized map.

companies for the next phase. The remaining good-quality microfiche and the paper for non-microfilmed documents will be scanned during this phase; paper will be scanned as either black-and-white, greyscale or coloured images depending upon the nature of the original. Replacement and additional coloured images will be scanned from paper and added to existing .pdf files for documents with less than 25 percent coloured material.

In the meantime, mineral-regulations reporting guidelines now require that new mineral-exploration assessment reports be submitted as hardcopy and as .pdf files that are required to be bookmarked where a document is longer than 20 pages. As these documents become non-confidential, they will also appear online.

Full-text .pdf files for mineral-exploration assessment reports may be accessed online by searching the Geofiles database at the Departmental website <http://gis.geosurv.gov.nl.ca/minesen/geofiles/>. Any search

that results in a reference or description of a document with online .pdf files will contain links to the main .pdf file. The bookmarks in this main file will link to external files, such as those for large maps.

Full-text .pdf files for Geological Survey publications, which have been accessible online from <http://www.nr.gov.nl.ca/mines&en/geosurvey/publications/geopubs.stm>, are now also being made accessible through the Geofiles database.

DOCUMENT COLLECTIONS

There are two main geoscience document collections at the Geoscience Publications and Information Section of the Geological Survey – the Geofiles and the Technical Library. In addition, there is a small collection of images (e.g., slides, photographs) and two collections of donated mineral-exploration documents.

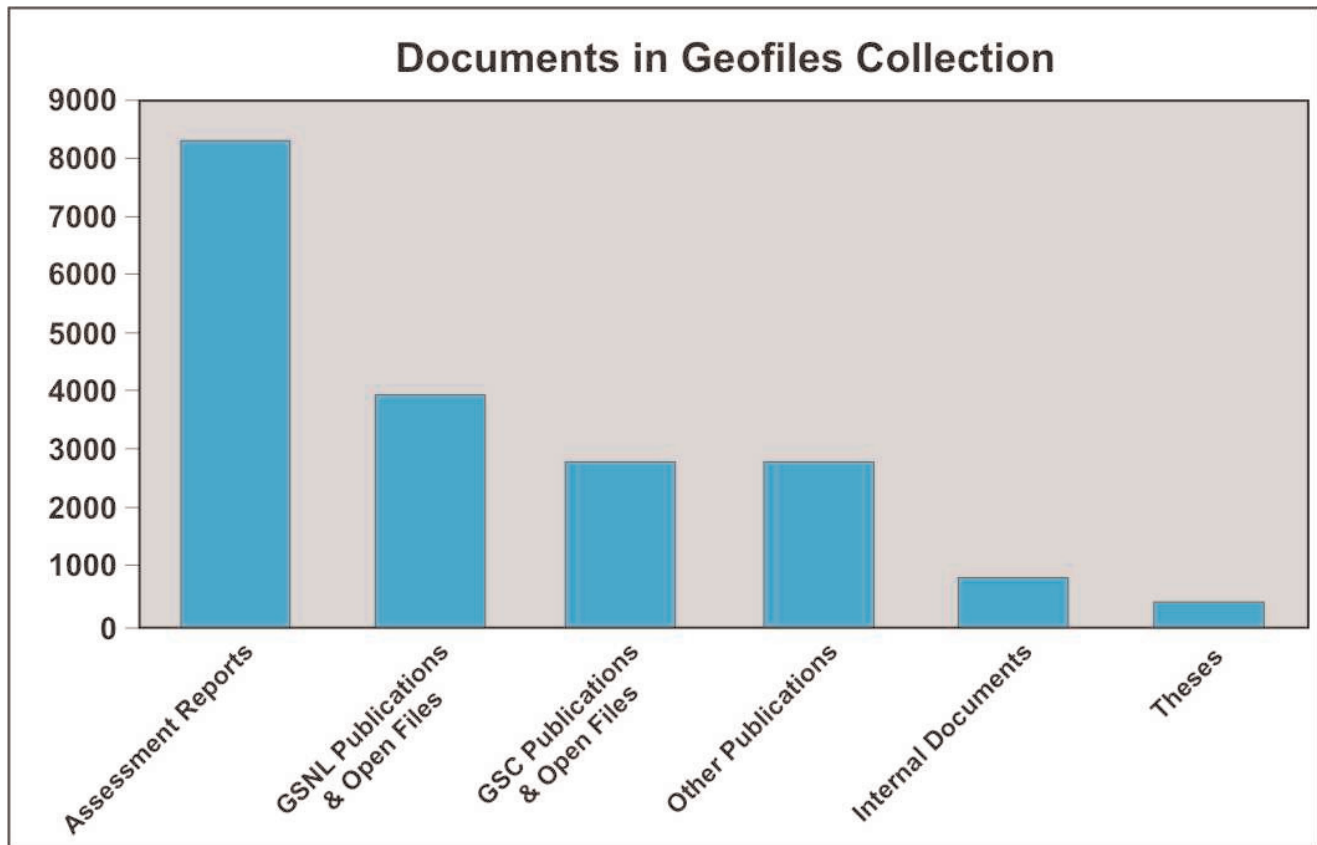


Figure 2. Proportions of various document types in the Geofiles collection.

- The Geofiles is a collection of over 17 000 documents pertaining to the geoscience of Newfoundland and Labrador and the immediate contiguous offshore region. It includes mineral-assessment reports, government-published reports and maps, government open-file reports and maps, non-governmental published articles or volumes, unpublished reports and maps, and university theses. Figure 2 shows the proportions of document types in the collection.
- The Technical Library is a collection of over 11 200 documents referring to areas other than this Province and includes publications and maps published by the Geological Survey of Canada and by other provincial, federal and international surveys; technical books, and current and back issues of geoscience journals are also included in the library. Short bibliographic records for about 65 percent of the documents in the Technical Library collection are available through the in-house GSLib database.
- Images is a small collection of about 4200 slides, photos, negatives and videos pertaining to the geology, mining and quarrying in the Province. This collection, with a related database, represents only a small fraction of the slides and photos held by the Survey.
- Exploration Company Archives (Ex) is a collection of over 2400 files of assorted mineral-exploration documents and a related database that was created in 2003 when the Survey contracted an initial review of materials donated mainly by Noranda, Chevron and Royal Oak Mines. Some, or parts, of the Ex documents may already be in the Geofiles collection; others including field notes, analytical data and drafts of reports and maps are not in any pre-existing collection.
- Prosp is a collection of over 350 reports submitted under the various mineral-industry assistance/incentive programs for the period 1988 to 1999, and a related database created in 2004. These documents cover prospecting activity carried out under the Prospector's Assistance Program, Newfoundland Exploration Assistance Program and Dimension Stone Incentive Program. The documents consist of prospecting report forms, written reports, assay certificates, field notes, maps and report drafts. Some, or parts, of these documents may already be available in the Geofiles collection.

DATABASES

The documents in the Geofiles collection are described in several databases including: Geofiles and Drill.

About 95 percent of the documents in the Geofiles collections are described in, and can be searched online, at <http://gis.geosurv.gov.nl.ca/minesen/geofiles/>.

Since January 2006, over 250 records for mineral-exploration assessment reports were added to the database and over 300 records for similar documents have been made searchable online. Only records/metadata for non-confidential documents in the collection are searchable online. Figure 3 below shows the current Search screen. Recently added tick boxes allow the user to limit searches to documents that have full .pdf files viewable online or that have accessory digital data (e.g., geophysical datasets) available

upon request; more complex searches of the database continue to be available in-house.

The current subset of the metadata from the Geofiles database, which is available in a GIS environment through the Survey's Geoscience Resources Atlas and also through the Canadian Geoscience Knowledge Network (CGKN), has polygons for 6426 mineral-exploration licences that relate to only 1697 assessment reports. A large number of new polygons for additional historical and current licences are expected to be added before the end of the fiscal year. There are also polygons for 484 of the open files published by the Geological Survey at the two GIS websites.

No new records have been added to other databases for other collections, although all databases have been used to locate documents and can be searched in-house by clients. Ex can be searched using words in the title, company,

Geological Survey
 Branch Home | Home | Contact Us | FAQs | How Do I
 Databases | Publications | Resources Atlas | Maps

GEOFILES

To locate documents on the geology and mineral resources of this province, search the descriptions of the documents contained in our [Geofiles Collection](#). If you cannot locate a document, we can do more complex searching in-house; see contacts.

Search | Reset | Help

Document Type:

Year or Range: to

Search Criteria		Returned Selections
NTS Area	<input type="text"/> <input type="button" value="Go"/>	
Geographic Area	<input type="text"/> <input type="button" value="Go"/>	
Company	<input type="text"/> <input type="button" value="Go"/>	
Author	<input type="text"/> <input type="button" value="Go"/>	
Keyword	<input type="text"/> <input type="button" value="Go"/>	
Nomenclature	<input type="text"/> <input type="button" value="Go"/>	

Title:

Geofile Number: Full PDF Online

Licence Number: Accessory Digital Data (Available upon Request)

Document Number:

Figure 3. Online search screen for Geofiles database.

date(s), authors, and location (but not necessarily NTS values) information fields. The Prosp database has similar search features and also has better NTS descriptors.

ACCESS TO DOCUMENTS

Document Ordering: Mineral-exploration assessment reports and survey publications can be ordered online; however, as prepayment is required, clients must contact the Geoscience Publications and Information Section to provide payment and credit card information until e-commerce is available. The existing methods of ordering (*e.g.*, telephone,

mail, fax, online .pdf) are still available. To encourage prospecting activity in the Province, copies of assessment reports and certain government publications are provided to individual prospectors at no cost.

Online Access: From the Geofiles database at <http://gis.geosurv.gov.nl.ca/minesen/geofiles/> over 5000 mineral-assessment reports may now be viewed online and either printed or downloaded, at no charge, to the user's computer. If a document is available online, a link to the document will show up on the search results standard view screen (Figure 4) below and also on the full details screen in the availability box (Figure 5). A selection of Geological

Geofile Number: 011P/14/0088

Full Text Online

Title: Assessment report on geophysical and drilling work performed during 1981 for licence 1367 on claim block 1746 in the Cochrane Pond A area, Newfoundland

Author(s): Barry, J M and MacIsaac, M

Year: 1981

Company(s): Falconbridge Nickel Mines Limited

Source: Newfoundland and Labrador Geological Survey, Assessment File 11P/14/0088, 1981, 31 pages.

NTS: 11P/14

Geofile Number: 011P/14/0066

Title: Assessment report on the geological, geophysical and geochemical surveys performed during 1979 for licences 1364 and 12140 on claim blocks 1743, claims 13152 and 13157-13158 in the Hook Pond area on the south coast of Newfoundland

Author(s): Barry, J M

Year: 1980

Company(s): Falconbridge Nickel Mines Limited

Source: Newfoundland and Labrador Geological Survey, Assessment File 11P/14/0066, 1980, 39 pages.

NTS: 11P/14

Geofile Number: 011P/14/0067

Title: Assessment report on the geological, geochemical and geophysical surveys performed during 1979 for licence 1367 on claim block 1746 in the Cochrane Pond area on the south coast of Newfoundland

Author(s): Barry, J M

Year: 1980

Company(s): Falconbridge Nickel Mines Limited

Source: Newfoundland and Labrador Geological Survey, Assessment File 11P/14/0067, 1980, 50 pages.

NTS: 11P/14

Geofile Number: 011P/14/0068

Full Text Online

Title: Assessment report on the geological and geochemical surveys performed during 1979 for licence 12123 on claims 12460 and 12484 in the Cochrane Pond D area, Newfoundland

Author(s): Barry, J M

Year: 1980

Figure 4. Geofiles database search results displayed in Standard View.

Survey publications is also available online at <http://www.nr.gov.nl.ca/mines&en/geosurvey/publications/geopubs.stm>. All documents are in .pdf format; to view

these documents, users must have Adobe Acrobat Reader, which is available for downloading at no charge via links from the Geological Survey's website.

Geological Survey

[Branch Home](#) | [Home](#) | [Contact Us](#) | [FAQs](#) | [How Do I](#)
[Databases](#) | [Publications](#) | [Resources Atlas](#) | [Maps](#)

014E/08/0105

Title	Second year assessment report on geological, geochemical, geophysical and diamond drilling exploration for licences 3972m-3973m on claims in the Tasiuyak Tasiyua area, northern Labrador
Author(s)	Cullen, M P and Churchill, R
Company(s)¹	Tapestry Ventures Limited (owner of property) Portman Explorations Limited (owner of property)
Source	Newfoundland and Labrador Geological Survey, Assessment File 14E/08/0105, 1997, 127 pages.
Date	1997-09-08
Area	Labrador
NTS	14E/08
Term(s)	geochemistry; geophysics; metallic minerals; regional geology assays; chalcopyrite; cobalt geochemistry; copper geochemistry; drillholes; e m anomalies; e m surveys, ground; gneisses; gold geochemistry; gossans; grab samples; mafic intrusive rocks; magnetic anomalies; magnetic surveys, ground; major element geochemistry; mineralization; nickel geochemistry; prospecting; pyrite; pyrrhotite; rock geochemistry; trace element geochemistry; ultramafic rocks; v l f surveys, ground; veinlets; zinc geochemistry drill core geochemical anomalies; drill core geochemistry; e m conductors; mineralized boulders; rock geochemical anomalies Basha Showing, Lab
Mineral Rights	Licence(s) 3972M 3973M
Digital Data	geophysical data; maps
Drilling	3 ddh 421 m
Map(s)	11 map(s)

Availability ²	Add To Order
Full Text Online Copies may be purchased: <input type="checkbox"/> Complete Document - \$57 OR Sections of the Document <input type="checkbox"/> Pages < 8 1/2" x 14" - \$19 <input type="checkbox"/> Pages, Maps ³ > 8 1/2" x 14" - \$33 <input type="checkbox"/> Digital Data Only - \$5 This document is also available on microfiche.	

[Supplementary Details](#) | [Previous Page](#) | [Back To Search](#)

Figure 5. Sample online record.