

MINERAL OCCURRENCE DATA SYSTEM (MODS)

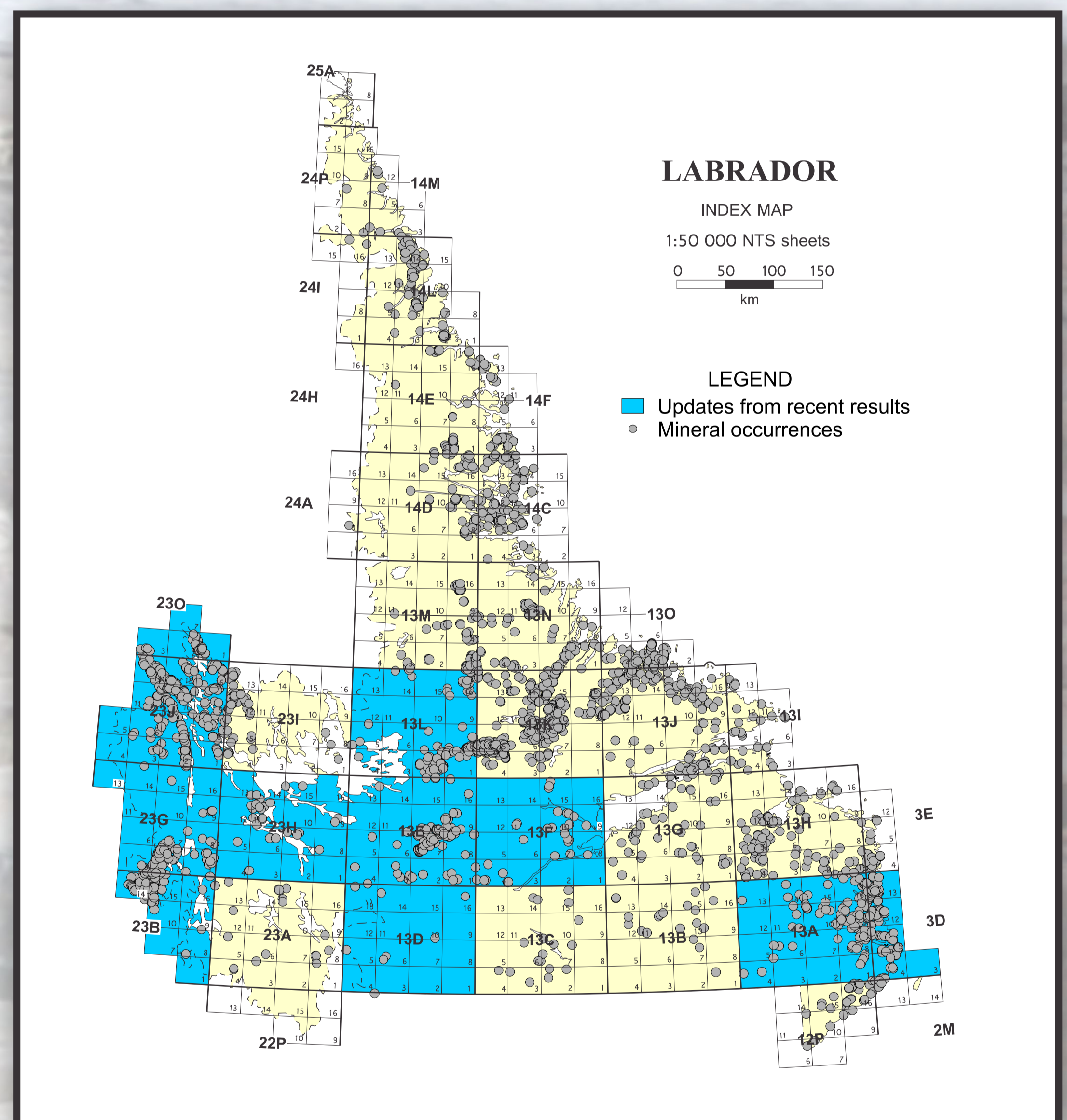
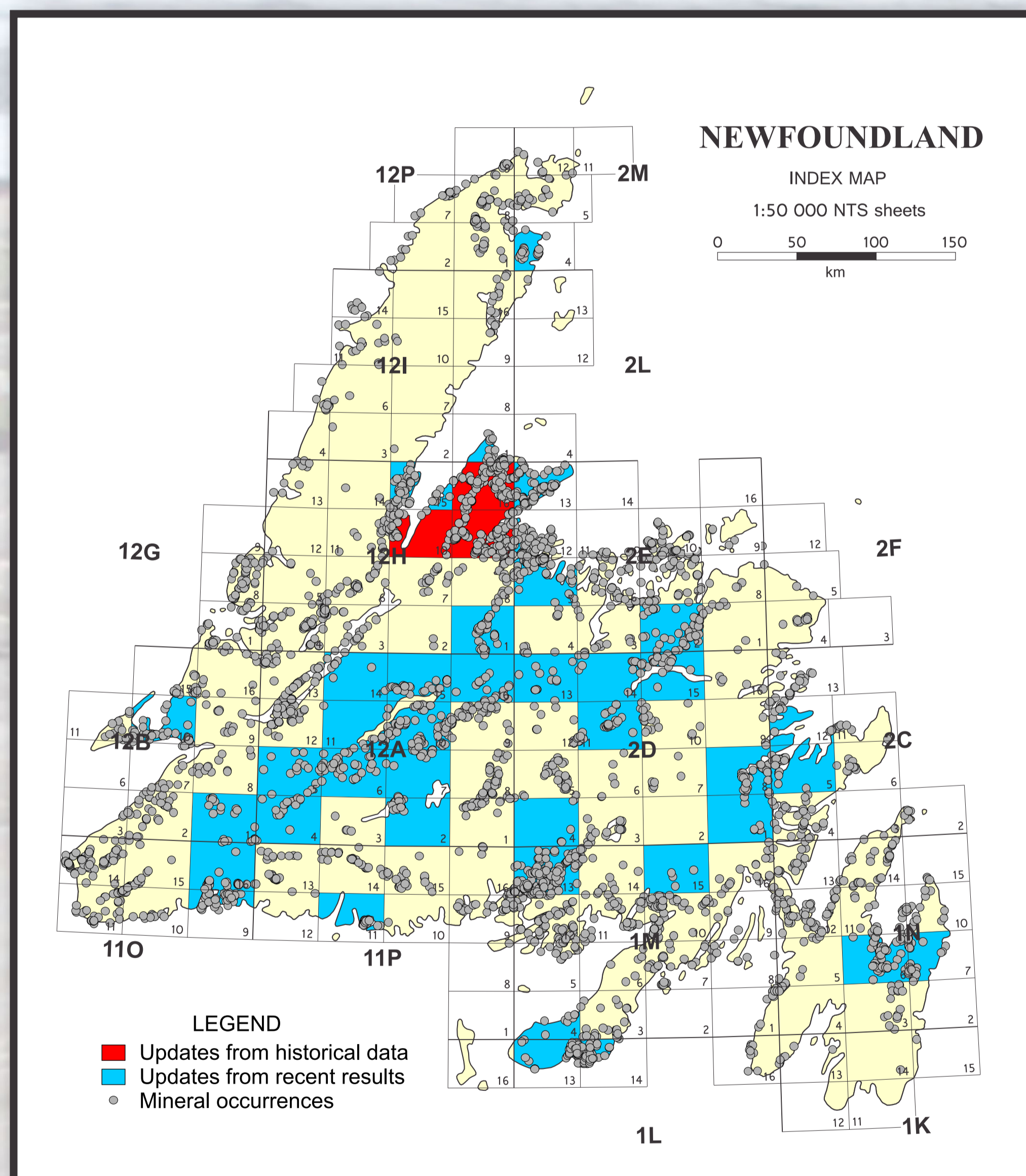
Greg Stapleton, Jan Smith and Trina Adams

The Mineral Occurrence Data System (MODS) is a vital resource available for explorationists and researchers interested in the mineral resources of the Province. It provides locational information on occurrences, information on previous exploration work and essential geological data, and also classifies them by style and geological context. The database currently contains over 6735 records, and is updated and added to continuously.

Format and Delivery Mechanisms

Most MODS users access records through the internet, via the Geological Survey website. The standard website interface allows the database to be searched using geographic and/or geologic criteria to retrieve specific sets of records for more detailed analysis. MODS data are also displayed graphically through the online Geoscience Atlas, in conjunction with other geographic and geological data, and can be queried in a more limited manner through this graphical interface.

MODS data are an important component of other Geographic Information Systems (GIS) developed by the Survey for mineral resource and geoscientific purposes. Selected data from MODS form part of the Geoscience Atlas on CD-ROM, which contains GIS data for Newfoundland and Labrador. MODS data are also provided via thematic maps available as digital or on-demand printed products; these cover commodities (e.g., gold, copper, lead-zinc) or deposit types (VMS, carbonate-hosted Zn, etc.). Such maps complement the **Commodity Series Reports** on these and other commodities.



Maps showing the distribution of mineral occurrences in MODS, and new and updated occurrences from work in 2013. Note that minor updates of occurrences are not indicated for the sake of clarity.

Developments in 2013

Keeping MODS up to date is one of the greatest challenges at present! Updates by NTS map sheet using historical data continued, with most of this work focused on the Baie Verte Peninsula (NTS 12H/09, 12H/10 and 12H/16). We also implement updates by accessing press releases and mineral-industry assessment reports as they gain public-domain status. Areas treated in this manner include 1L, 1M, 1N, 2C, 2D, 2E, 2M, 11O, 11P, 12A, 12B, 12H, 12I (Newfoundland), and 3D, 13A, 13D, 13E, 13F, 13L, 23B, 23G, 23H, 23J and 23O (Labrador). In 2013, we continued to achieve consistent delivery of new information through the database and the graphical interface. The information available through the Geoscience Atlas is updated every 24 hours to reflect database changes.